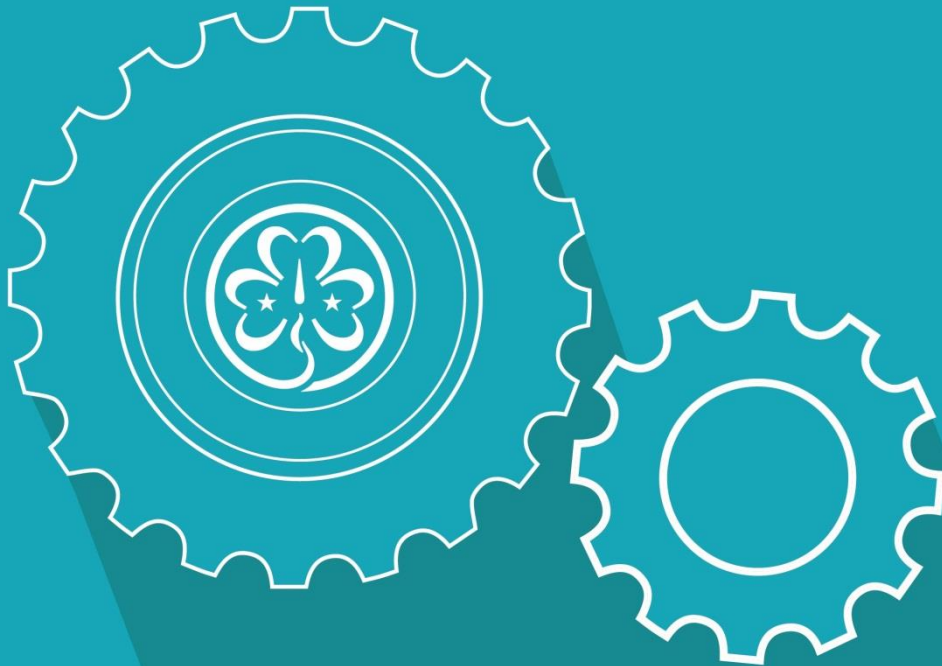


A Movement of Ideas for Growth Results

London, November 2015



Working Together to Serve Expatriate Girls Around the World

Stefanie Ortiz-Cidlik

Chief USA Girl Scouts Overseas Executive
Girl Scouts of the USA

&

Lesley Knighton

Chief Commissioner
British Guides in Foreign Countries



Session Objectives

- Determine a standard practice and guidelines for ensuring that all girls who want a Girl Scout/Girl Guide experience get one.
- Establish actions to build and strengthen partnerships between USAGSO/BGIFC locations and host nation MOs to create a more enriching experience for our girls.
- Explore ways WAGGGS can best support and encourage these partnerships.





girl scouts
usa girl scouts
overseas



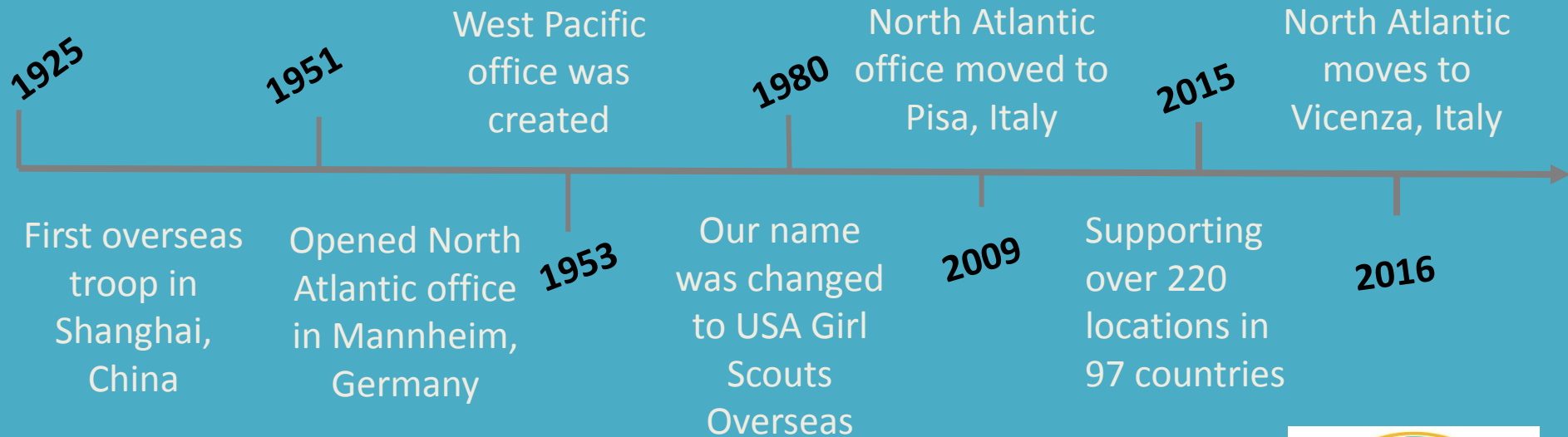
Our Core Purpose



USA Girl Scouts Overseas exists to bring Girl Scouts to the daughters of military, foreign service and **American expats** around the world and to **all girls in American or International schools.**



How We Started





Europe

Austria, Belgium, Bulgaria, Croatia
Czech Republic, Denmark, France
Georgia, Germany, Greece, Hungary
Iceland, Italy, Netherland, Norway
Poland, Portugal, Romania, Russia
Serbia, Slovakia, Spain, Sweden,
Switzerland, Turkey, Ukraine,
United Kingdom

Western Hemisphere

Argentina, Bolivia, Brazil,
Canada *, Columbia, Cuba,
El Salvador, Guatemala,,
U.S. Virgin Haiti, Honduras,
Mexico,
Nicaragua, Panama,
Paraguay, Peru,
VenezuelalIslands **

Africa

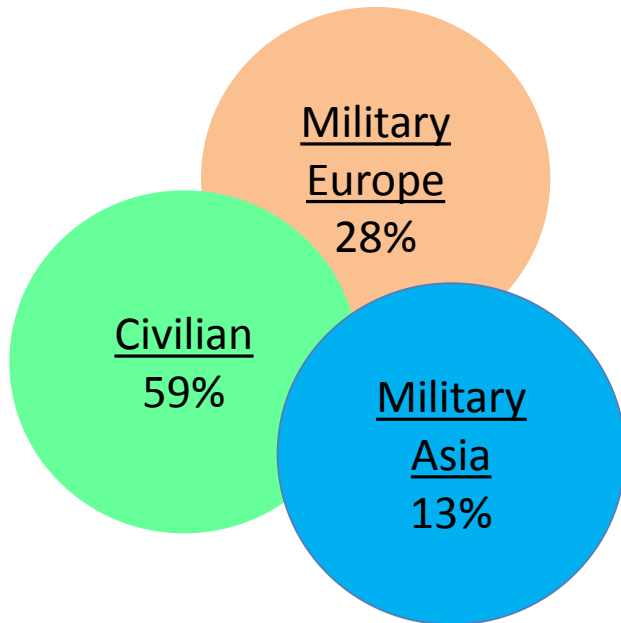
Angola, Burkina Faso, Cameroon,
Dem. Rep. of the Congo, Djibouti,
Egypt, Ethiopia, Kenya, Morocco,
Nigeria, Rwanda, South Africa,
Tanzania, Uga

Arab

Bahrain, Bangladesh, Israel
Jordan, Kuwait, Qatar
Saudi Arabia, United Arab Emirates

USA Girl Scouts Overseas Locations

Who We Serve



USA Girl Scouts

Overseas

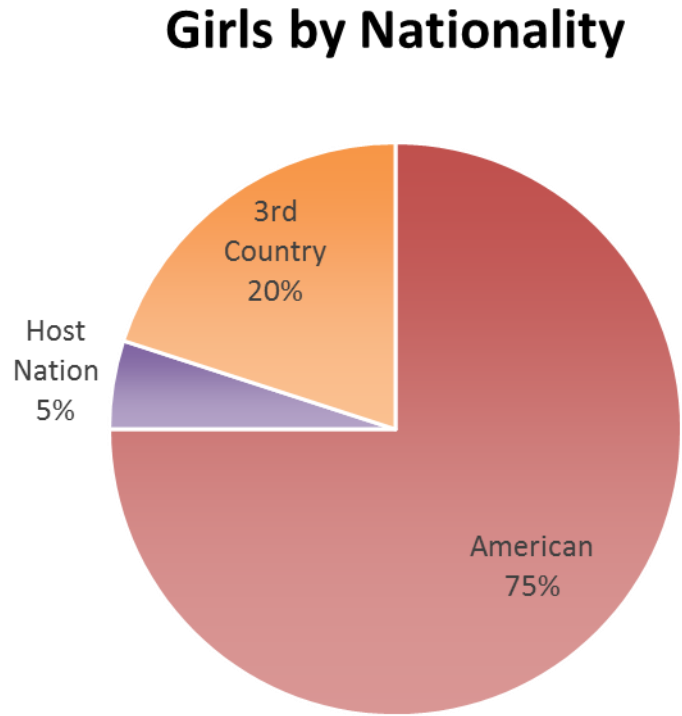
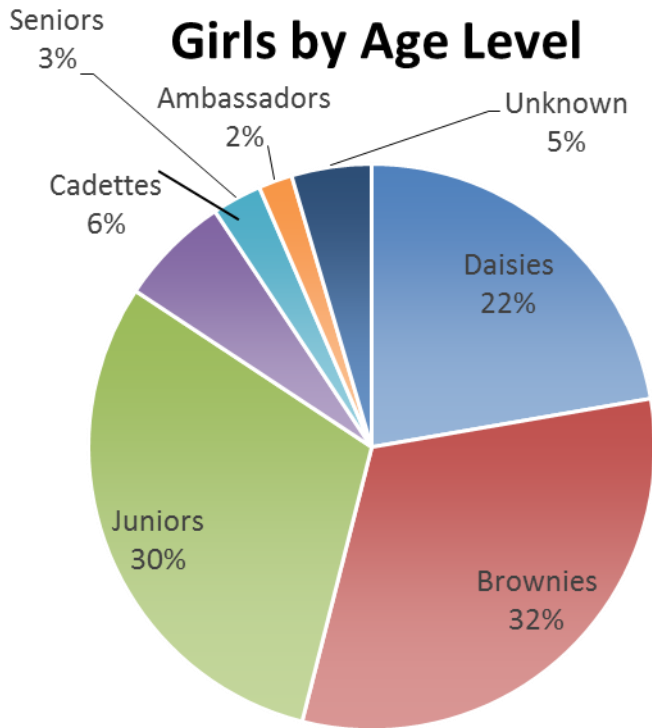
10,600 girls

5,500 adults

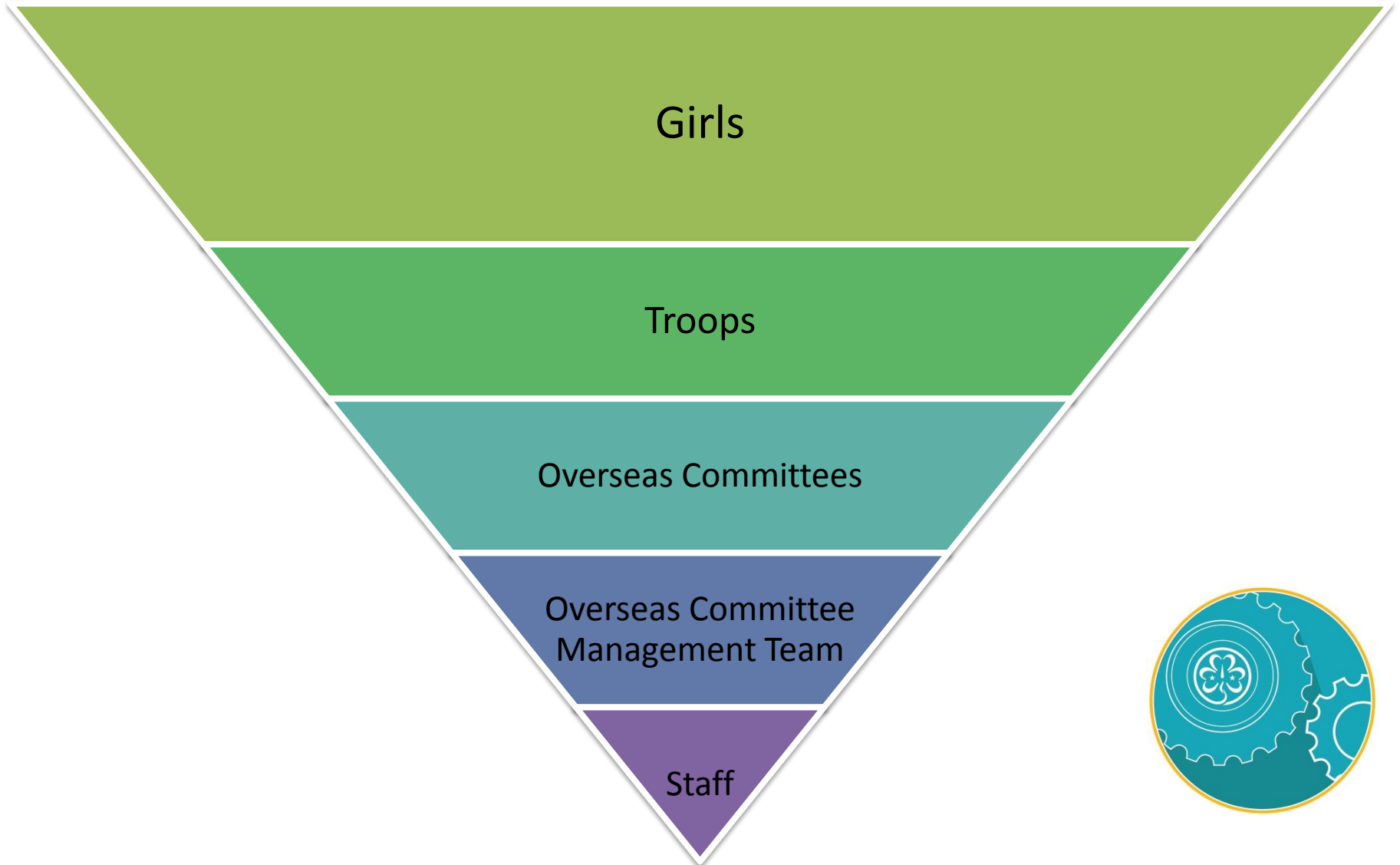
97 countries

Demographics of Our Girls

84% of USAGSO girl members are in K-5



Our Structure



How We Support Our Troops

- Resources
- Real Time Communication
 - Social Media
 - E-newsletter
 - Website
- Volunteer Training
- 1:1 check ins and support
- Camp & Travel opportunities
- Awards & Recognition



Partnering with Our Host Nations

- Shared Events & Camps
- Special Awards
 - Lady Baden Powell Award
 - World Friendship Pin
- Take Action Projects





British Guides In Foreign Countries



BGIFC.....

- Began in Portugal in 1911
- Is for girls and young women whose parents work or live abroad
 - Provides continuity in a transient society
- Follows the same programme as members in the UK
 - Wears the same uniform as UK members
- Operates as a 'Region' within Girlguiding with its own Commissioner and support team mainly based in the UK



BGIFC Structure

Lone Brownie Unit
Lone Guide Unit
Lone Senior Section Unit

Advisers' Committee

BGIFC Country/Region

Asia County

Malaysia Division

Districts

Kuala Lumpur North
Kuala Lumpur South
Independent Units
Putrajaya

Independent Districts

Jakarta
Singapore
West Brunei

Independent Units

India
Japan
Nepal

Benelux and France County

Districts

Brussels & Waterloo
Ile de France
Luxembourg
S.H.A.P.E. Belgium
The Hague
Toulouse

Independent Units

Amsterdam
Mauzac

Europe County

Cyprus Division

Districts

South and West Cyprus
East and Central Cyprus

Independent District

Spain

Independent Units

Greece
Hungary
Italy
Lanzarote
Mallorca
Norway
Slovakia
Spain
Sweden
Switzerland
Tenerife

Germany County

Districts

Bergen/Hohne
Gutersloh
Herford
Munich
Paderborn

Independent Units

Dusseldorf
Stuttgart

Middle East and Africa County

Dubai Division Districts

Arabian Ranches
Springs
Safa

Independent Unit
Senior Section Unit

Independent Districts

Abu Dhabi
Bahrain
Baku (Azerbaijan)
Doha
Kuwait
Oman
Sharjah (UAE)

Independent Units

Angola
Egypt
Ethiopia
Saudi Arabia
Tanzania

BENELUX and FRANCE



France

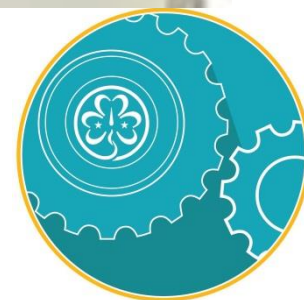
Belgium

Netherlands

Luxembourg



G
E
R
M
A
N
Y



EUROPE



Sweden Italy
Switzerland
Norway Greece
Canary Islands
Spain Slovakia
Hungary Cyprus



ASIA

Malaysia

India

Japan

Singapore

Indonesia

Brunei

Nepal

China



MIDDLE EAST and AFRICA

Abu Dhabi Dubai Sharjah
Bahrain Kuwait
Qatar Oman Saudi Arabia



Angola Baku Egypt
Ethiopia Tanzania



BGIFC Supports its units through.....

BGIFC Executive Committee

Newsletters

Skype

Team of Advisers

Leadership Coordinators

BGIFC and Girlguiding Websites

Local Commissioners

UK Girlguiding

and.....



TRAINING





The Big Brownie Birthday 2014



1st Al-Khobar Brownies, Saudi Arabia

“Virtual” Celebrations!



UK based Biennial Camp and Leader Training



Visits!



863 Adult Volunteers

43 Commissioners

3,655 Young Members

251 Units

BGIFC Total 4,561 Members

Small but perfectly formed!



Challenges

USAGSO	BGIFC
<ul style="list-style-type: none">• Quality control and program consistency• Connectedness• Family Mobility• Volunteer Recruitment• Costs• Increasing requests from outside defined market	<ul style="list-style-type: none">• Communication• Support & Training• Transient Population• Resources• Money Transfer• Police Checks

BGIFC's Guidelines for Opening New Units

- 50% of girls must be British or 75% from the Commonwealth
- Girls and Leaders must be English speaking
- Only under exceptional circumstances do we accept girls from the host country and then only with the permission of the host country's Chief Commissioner
- All adults must be reference checked
- We will not open a unit if there are GSUSA there already
- Units wanting to open in a new country need the approval of the Chief Guide and the host country's Chief Commissioner



USAGSO's Guidelines for Opening New Locations

- Americans must live in the community or attend the school
- Host country Chief Commissioner approval
- Membership is limited to...
 - American girls
 - Girls in an International or American school in which a USAGSO program exists



Small Group Activity

- Assign one note taker and someone to report out
- Read the case study on your table
- Using the discussion questions as a guide, discuss at your table



Large Group Discussion

How can we support and expand connections between your troops and USAGSO/BGIFC troops?

What support can WAGGGS provide to help build these connections?



