

Contractor's Site Area

Site Access Points

NORTH

Scale - 1:100 printed at A2
Scale in Metres

0 0.5 1 2 3 4 5

GROUND FLOOR LAYOUT

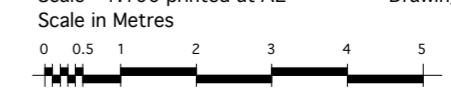
PART FIRST FLOOR LAYOUT

CONSTRUCTION ISSUE

REVISIONS:
C - 27.09.12 - Construction Issue

Victoria Park Harriers and Tower Hamlets AC
Proposals for improvement, alterations and reorganisation of club facilities
together with improvements in the provision of disabled access.

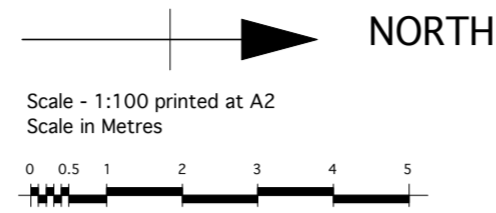
EXISTING PLANS
Scale - 1:100 printed at A2
Scale in Metres



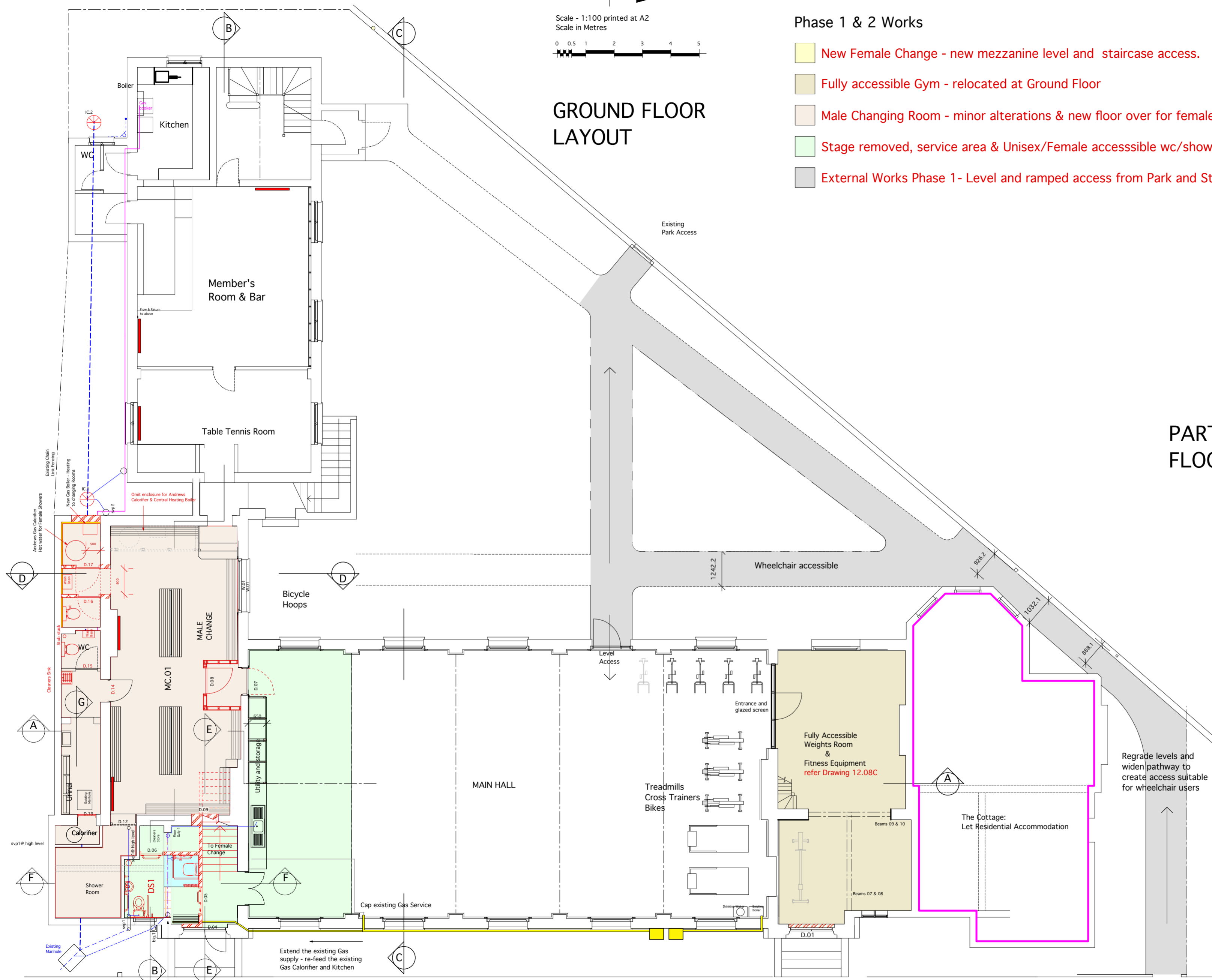
Alteration Works - Elements of Construction in Phases

Phase 1 & 2 Works

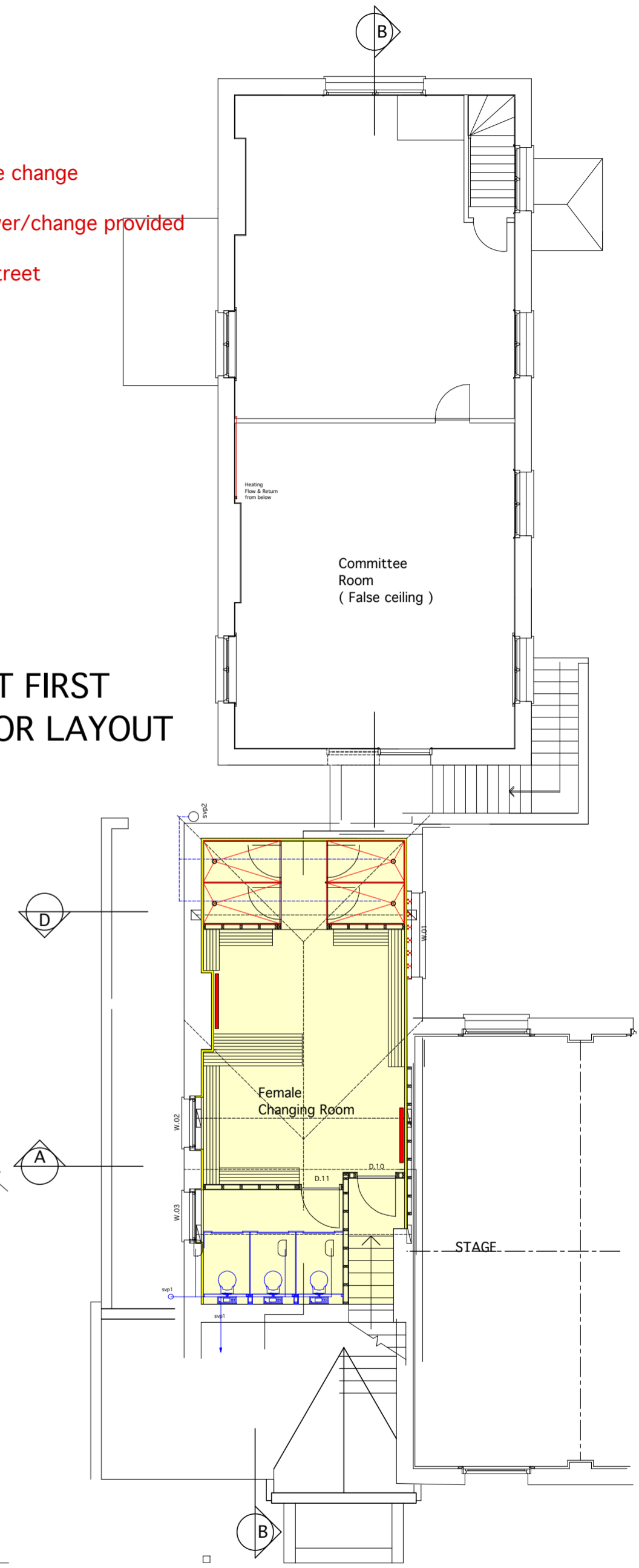
- New Female Change - new mezzanine level and staircase access.
- Fully accessible Gym - relocated at Ground Floor
- Male Changing Room - minor alterations & new floor over for female change
- Stage removed, service area & Unisex/Female accessible wc/shower/change provided
- External Works Phase 1- Level and ramped access from Park and Street



GROUND FLOOR LAYOUT



PART FIRST FLOOR LAYOUT



CADOGAN TERRACE

CONSTRUCTION ISSUE

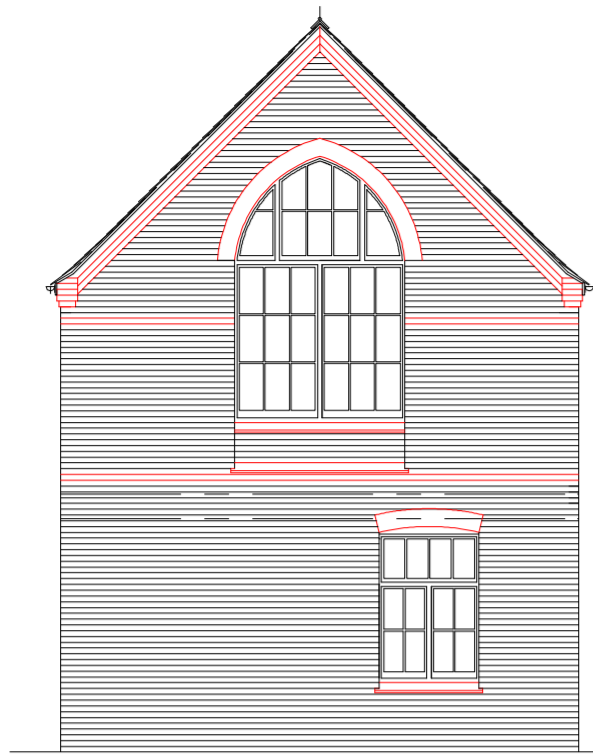
REVISIONS:
C - 27.09.12 - Construction Issue
Addendum Tender works added

Victoria Park Harriers and Tower Hamlets AC
Proposals for improvement, alterations and reorganisation of club facilities
together with improvements in the provision of disabled access.

PROPOSED PLANS - PHASES 1 & 2

Scale - 1:100 printed at A2 Drawing No: 2012.02/C
Scale in Metres





WEST ELEVATION GABLE



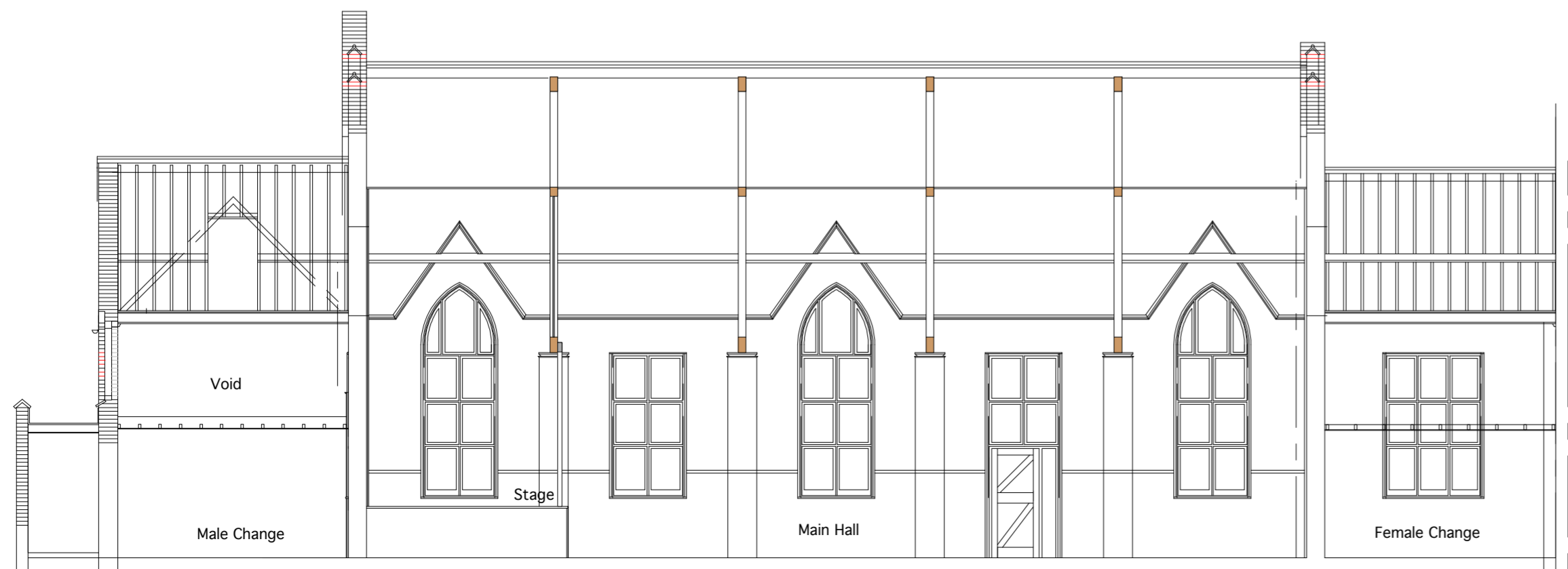
SECTION B - B



SECTION C - C



SECTION D - D



SECTION A - A

CONSTRUCTION ISSUE

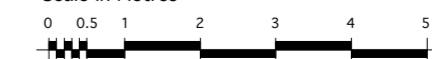
REVISIONS:
C - 27.09.12 - Construction Issue

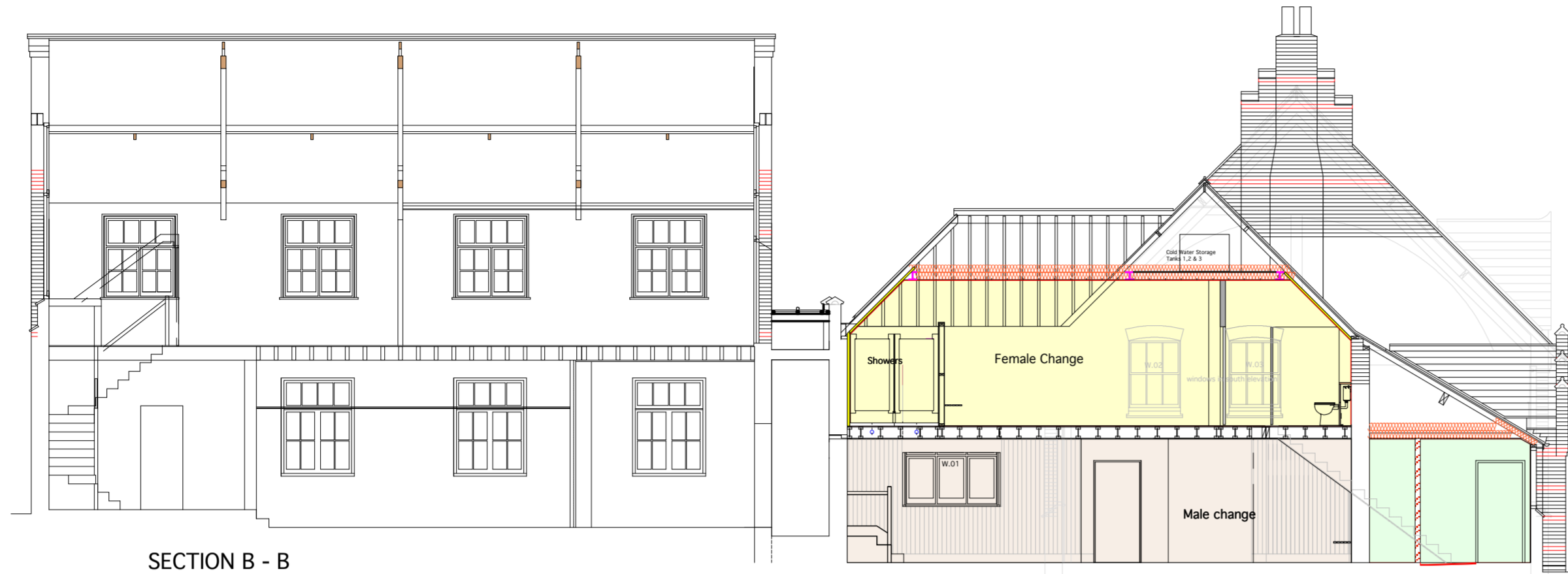
Victoria Park Harriers and Tower Hamlets AC
Clubhouse - St Augustines Hall,
Cadogan Terrace, London E9 5EG

Victoria Park Harriers and Tower Hamlets AC
Proposals for improvement, alterations and reorganisation of club facilities
together with improvements in the provision of disabled access.

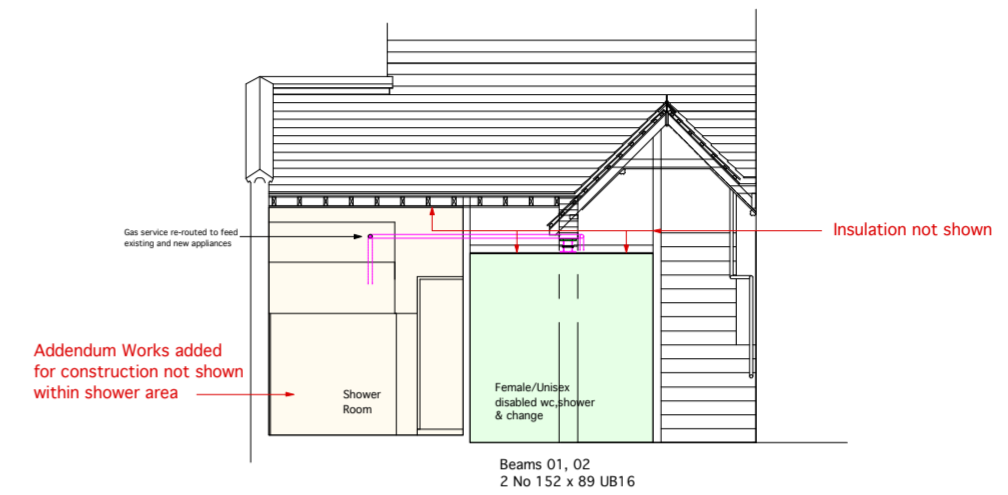
EXISTING SECTIONS and ELEVATIONS

Scale - 1:100 printed at A2 Drawing No: 2012.04/C
Scale in Metres

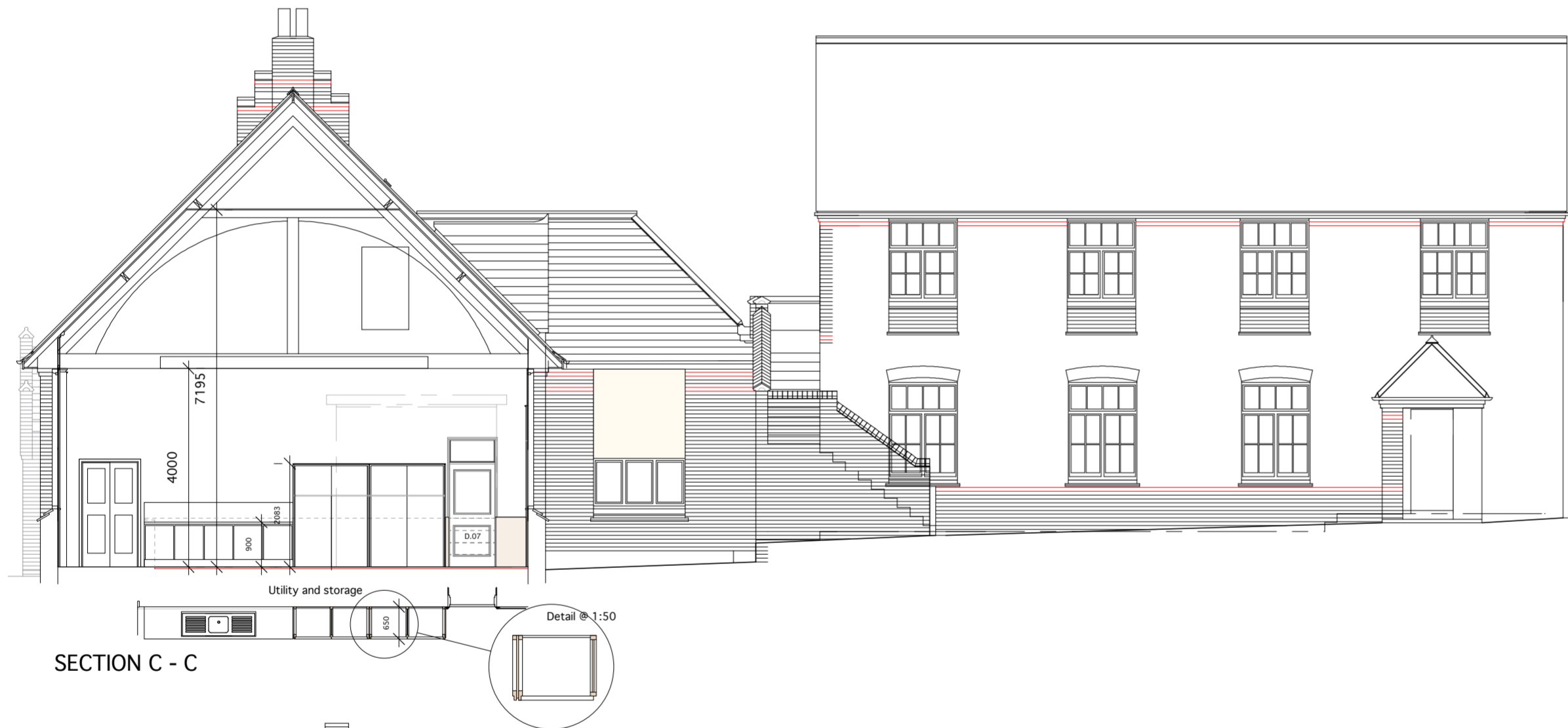




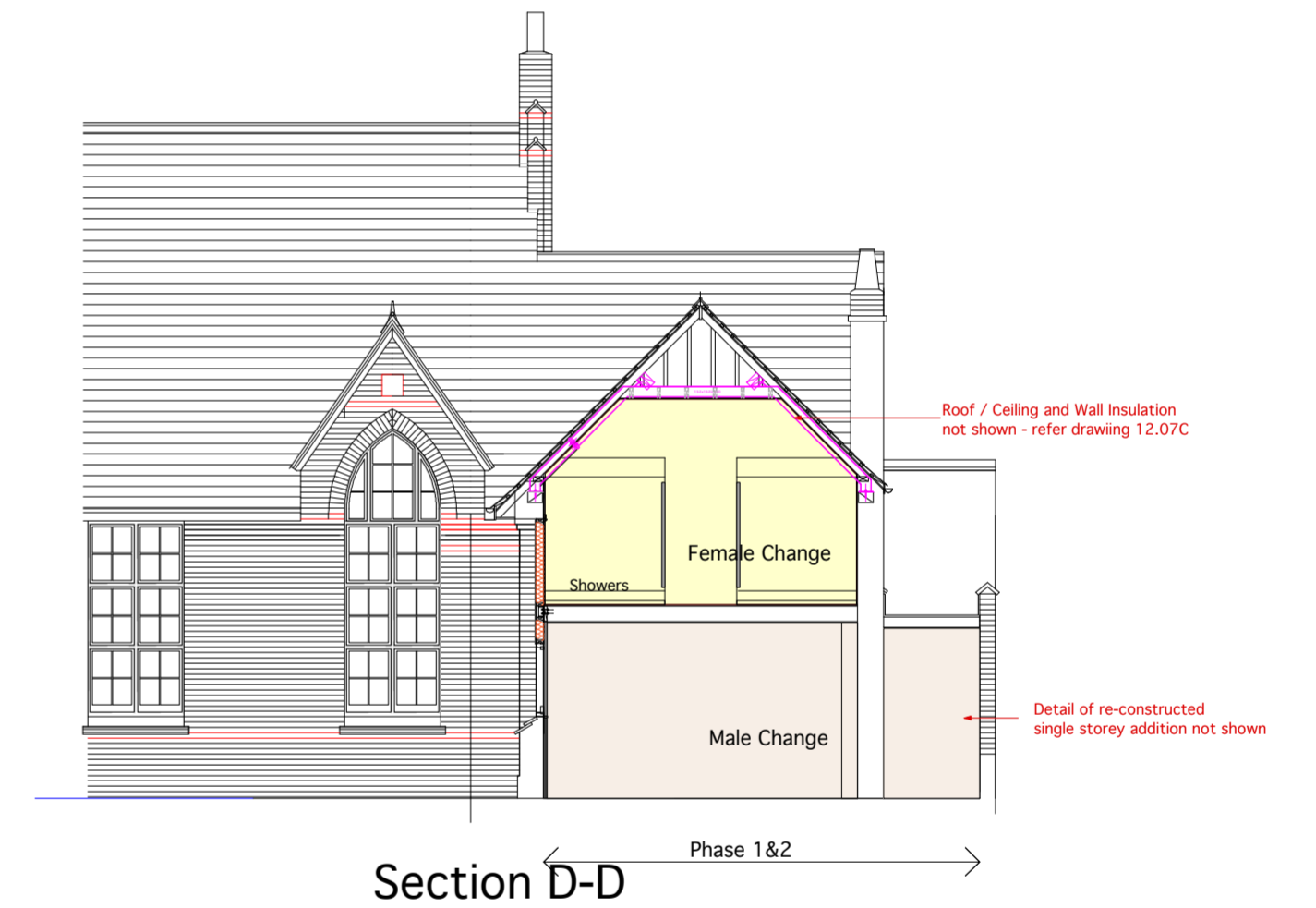
SECTION B - B



Section F-F



SECTION C - C



Section D-D



SECTION A - A

CONSTRUCTION ISSUE

Victoria Park Harriers and Tower Hamlets AC
Clubhouse - St Augustines Hall,
Cadogan Terrace, London E9 5EG

Victoria Park Harriers and Tower Hamlets AC
Proposals for improvement, alterations and reorganisation of club facilities
together with improvements in the provision of disabled access.

REVISIONS:
C - 27.09.12 - Construction Issue
Addendum Tender works added

PROPOSED SECTIONS and ELEVATIONS - Phases 1, 2 & 3
Scale - 1:100 printed at A2 Drawing No: 2012.05/C
Scale in Metres

