

The Health Collaborative Situational Dashboard*

October 08, 2020

*This information is provided "as-is." The Health Collaborative and its partners make no representation or warranty, express or implied, including without limitation any warranties of merchantability, fitness for a particular purposes, non-infringement, or warranties as to the quality, accuracy, or completeness of the information. Any use or reliance on this information is at the user's sole risk.

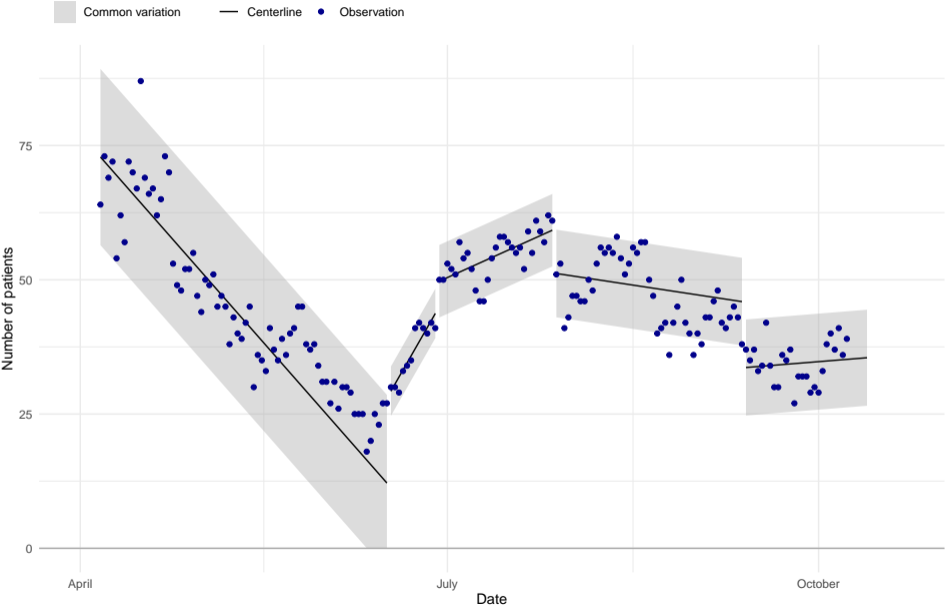
Hospital demand

Forecast demand

Mobility

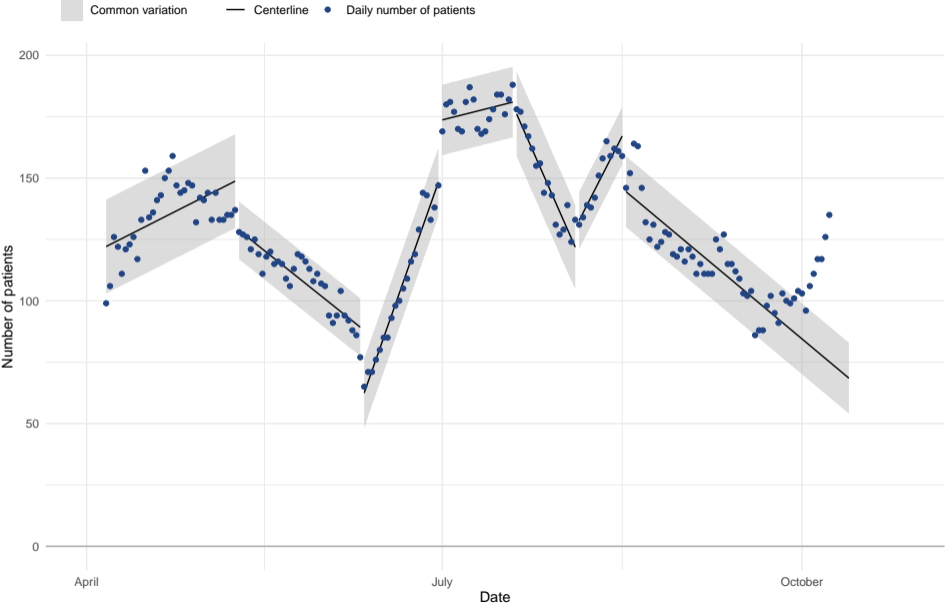
Hospital demand

Number of positive COVID-19 patients in Region 6 ICUs, I-Chart



Source: OHA Hospital Resource Tracker on October 8th

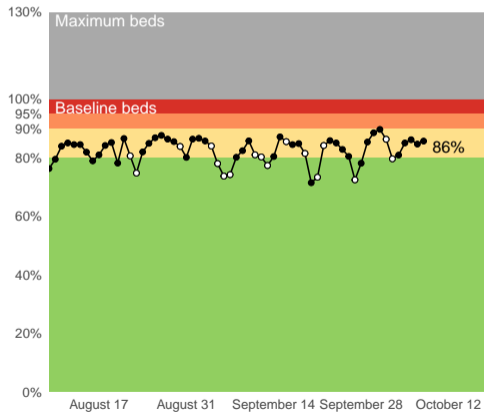
Number of positive COVID-19 patients in Region 6 hospitals, I-Chart



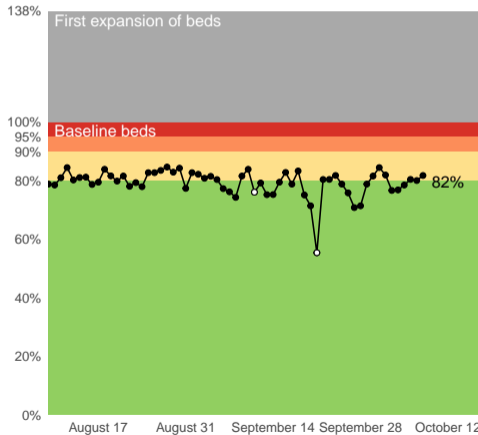
Source: OHA Hospital Resource Tracker on October 8th

Percentage of beds in use in Southwestern Ohio hospitals

Adult medical–surgical beds



Adult critical care beds

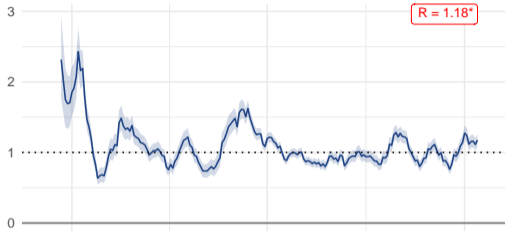


Source: SurgeNet data for Region 6 hospitals at 15:10 on October 8, 2020. Open circle indicates data for less than 90% of beds in SurgeNet.

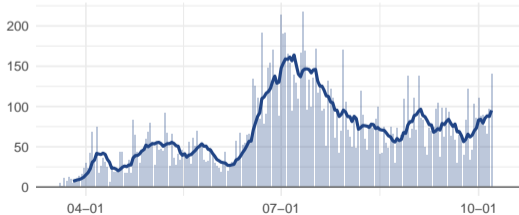
Forecast demand

Hamilton County, Ohio

Estimated R

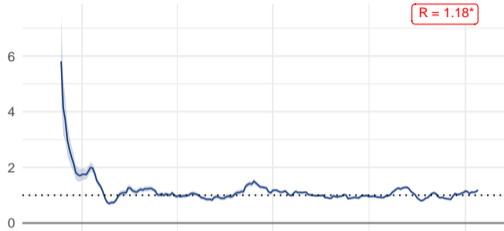


Daily incidence and seven day moving average

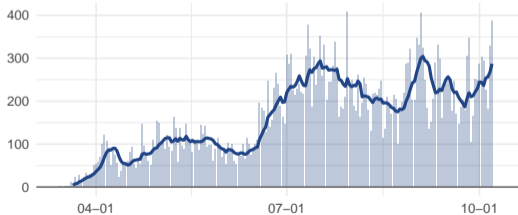


14 county area

Estimated R



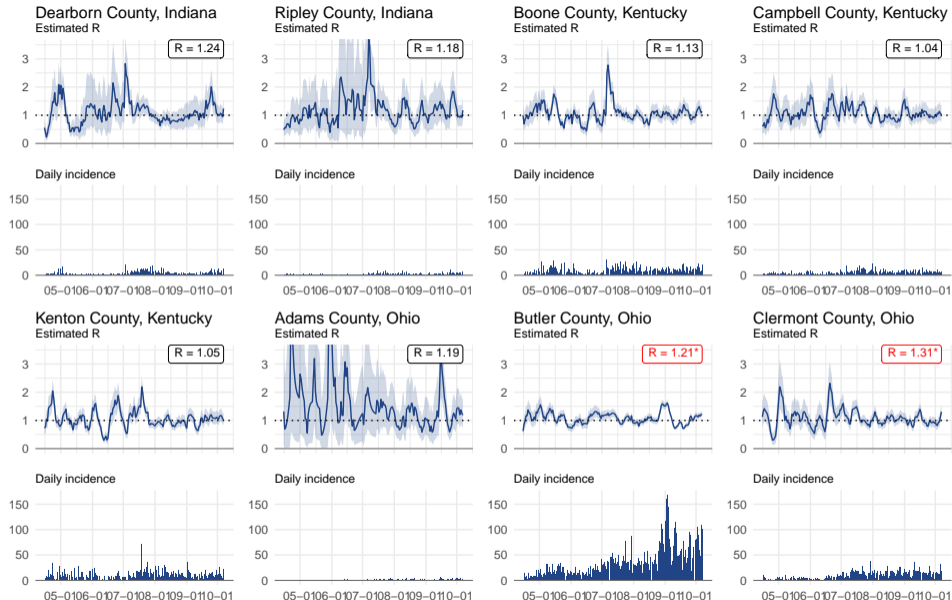
Daily incidence and seven day moving average



Mean serial interval (SI): 4.7 and standard deviation of SI: 2.9

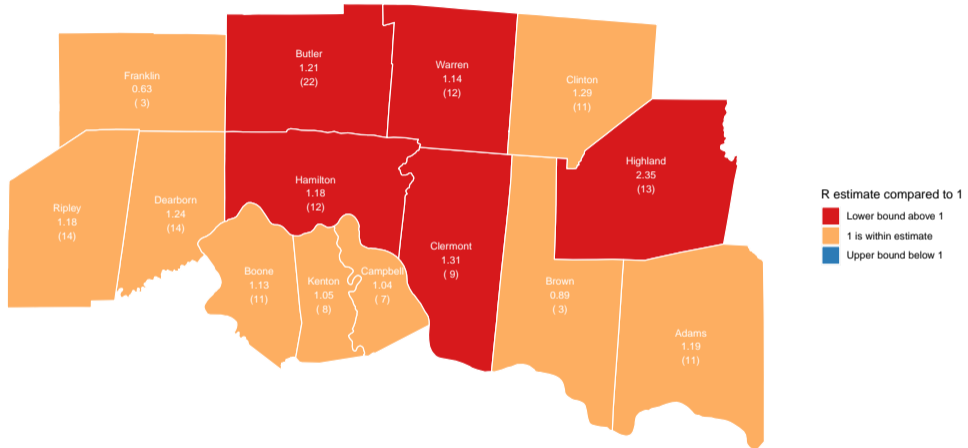
Data from The New York Times, based on reports from state and local health agencies. Pulled on: 2020-10-08. <https://www.nytimes.com/interactive/2020/us/coronavirus-us-cases.html>

Counties where the current R estimate is greater than 1



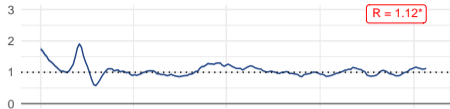
Red R value and * indicate that lower bound is greater than 1. Data from The New York Times, based on reports from state and local health agencies. Pulled on: 2020-10-08.
<https://www.nytimes.com/interactive/2020/us/coronavirus-us-cases.html>

Map of R estimates for 14 county area with average daily number of cases per 100,000 population in the last week
Estimated R value is based on the rate of change in incidence cases and should be considered along with the count



Mean serial interval (SI): 4.7 and standard deviation of SI: 2.9. Data from The New York Times, based on reports from state and local health agencies.
<https://www.nytimes.com/interactive/2020/us/coronavirus-us-cases.html> Pulled: 2020-10-08

Ohio Estimated R



Daily incidence and seven day moving average



Indiana Estimated R



Daily incidence and seven day moving average



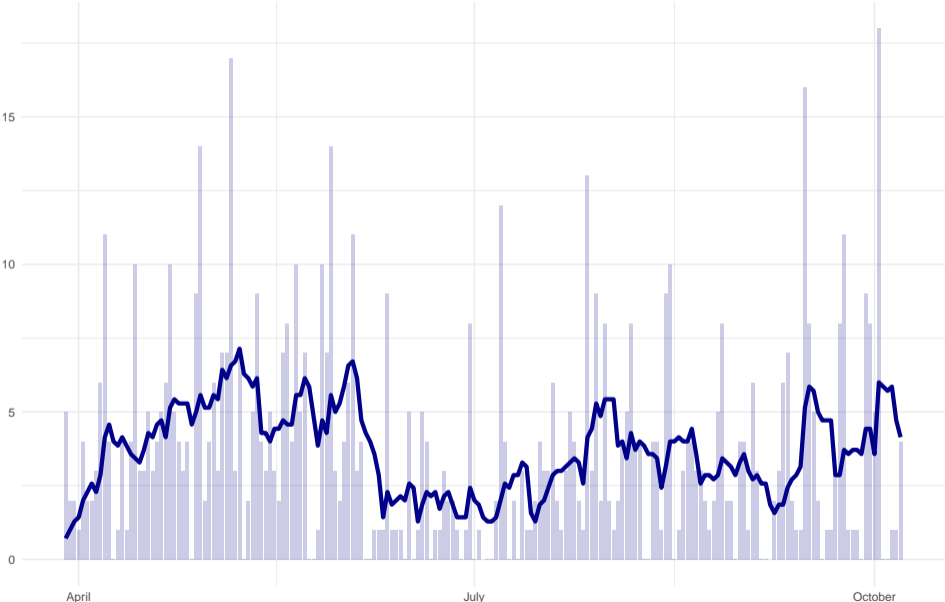
Kentucky Estimated R



Daily incidence and seven day moving average

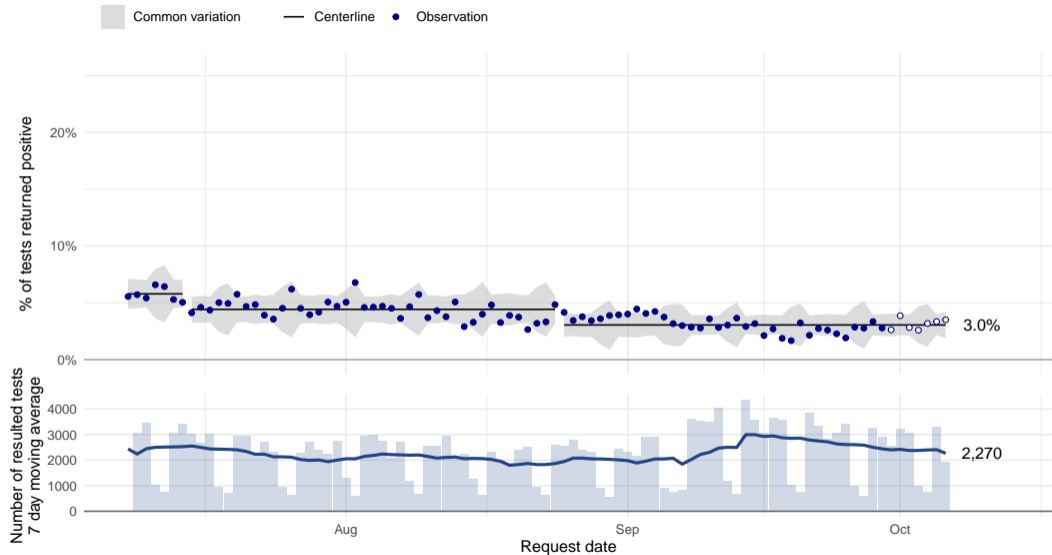


Number of COVID-19 deaths in 14 county area with 7 day moving average



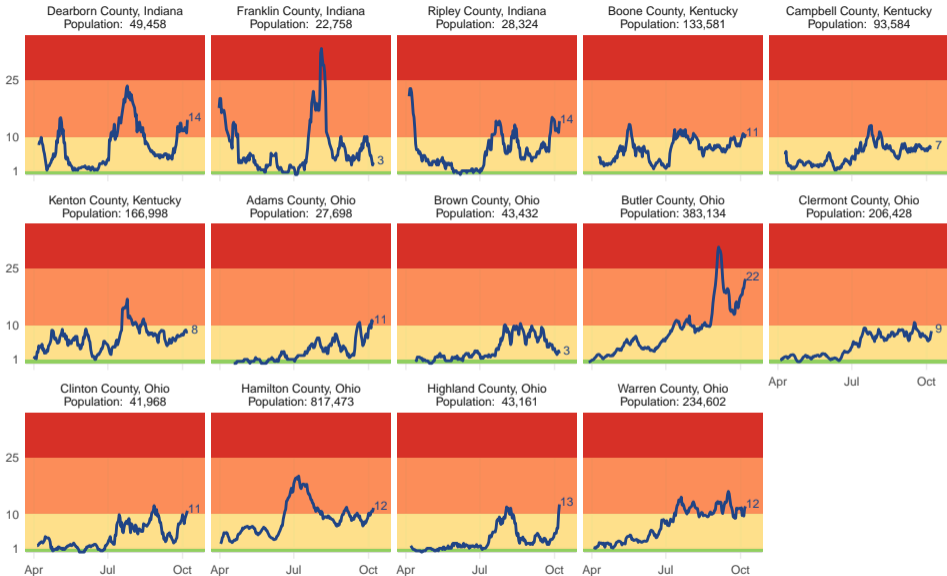
Data from The New York Times, based on reports from state and local health agencies. Pulled on: 2020-10-08. <https://www.nytimes.com/interactive/2020/us/coronavirus-us-cases.html>

Percentage of test results returned positive in 14 county region



Open circles indicate points highly subject to change
Source: The Health Collaborative data as of 10/08/2020.

Seven day moving average of new Covid cases per 100,000 people in each county

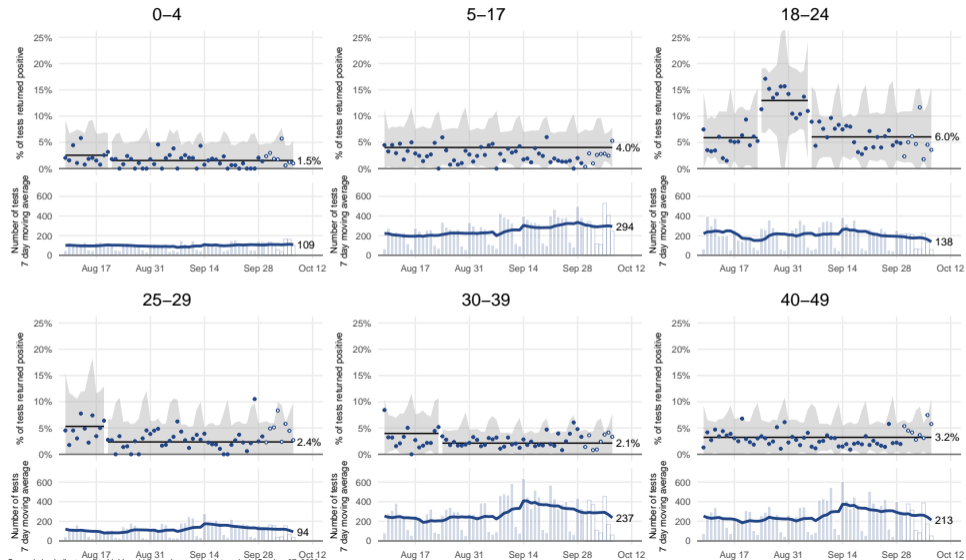


Levels are those suggested by Massachusetts Testing, Tracing, and Supported Isolation collaborative, information can be found here: <https://ethics.harvard.edu/ttsi-technical-handbook>.

Data from The New York Times, based on reports from state and local health agencies. <https://www.nytimes.com/interactive/2020/us/coronavirus-us-cases.html> Pulled: 2020-10-08

Percentage of test results returned positive by age of patient for 14 county area

Common variation • % of test returned positive — Centerline

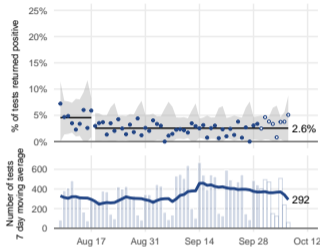


Open circles indicate points highly subject to change, last data point is October 07, 2020
 Source: The Health Collaborative data as of 10/08/2020.

Percentage of test results returned positive by age of patient for 14 county area

Common variation • % of test returned positive — Centerline

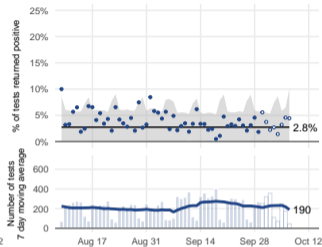
50–59



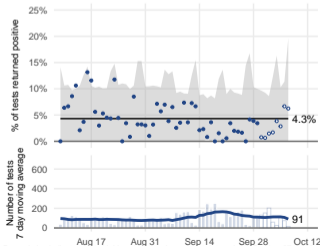
60–69



70–79



80–89



Open circles indicate points highly subject to change, last data point is October 07, 2020
 Source: The Health Collaborative data as of 10/08/2020.

Mobility

Percentage change in weekday mobility in Hamilton County

