

# The Health Collaborative Situational Dashboard\*

November 12, 2020

---

\*This information is provided "as-is." The Health Collaborative and its partners make no representation or warranty, express or implied, including without limitation any warranties of merchantability, fitness for a particular purposes, non-infringement, or warranties as to the quality, accuracy, or completeness of the information. Any use or reliance on this information is at the user's sole risk.

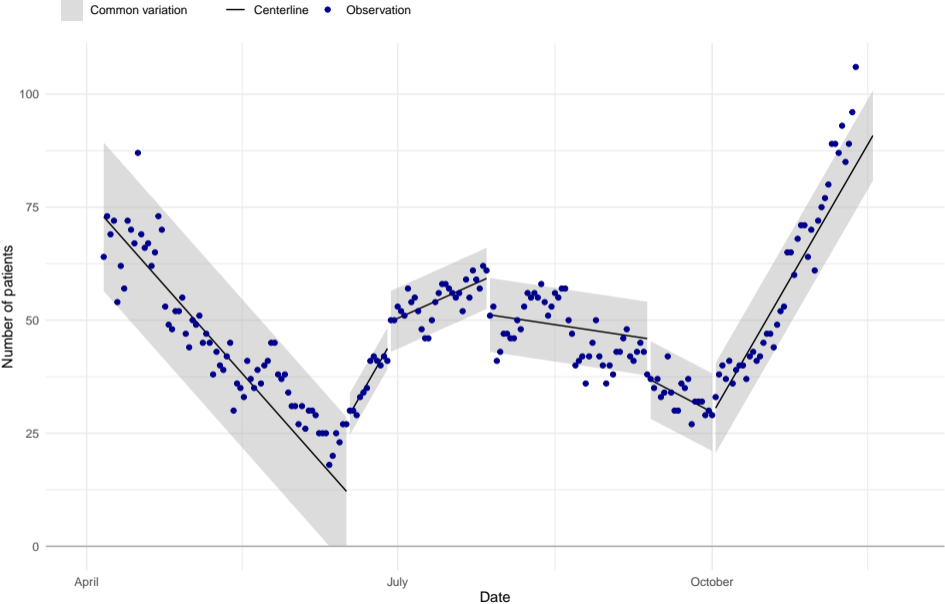
Hospital demand

Forecast demand

Mobility

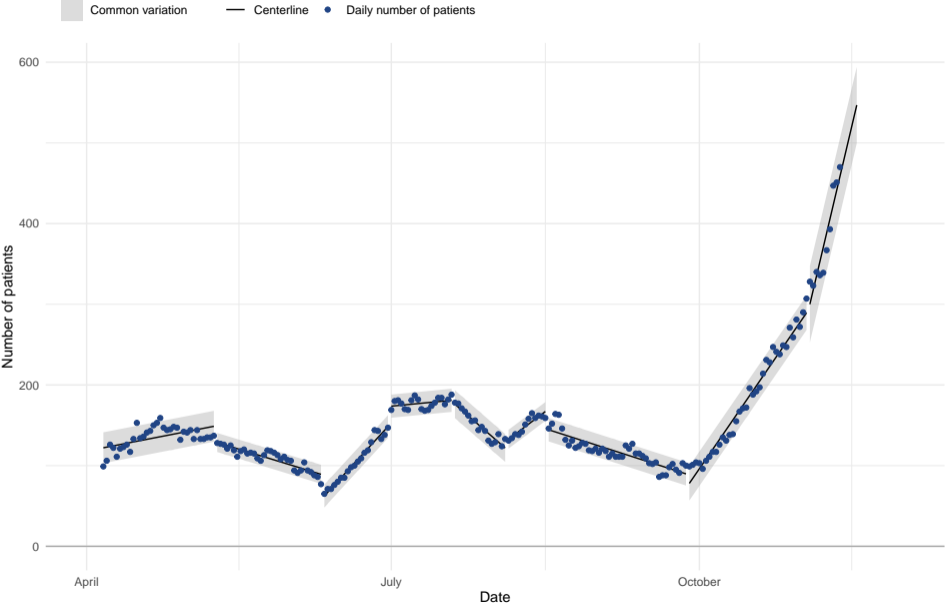
Hospital demand

# Number of positive COVID-19 patients in Region 6 ICUs, I-Chart



Source: OHA Hospital Resource Tracker on November 12th

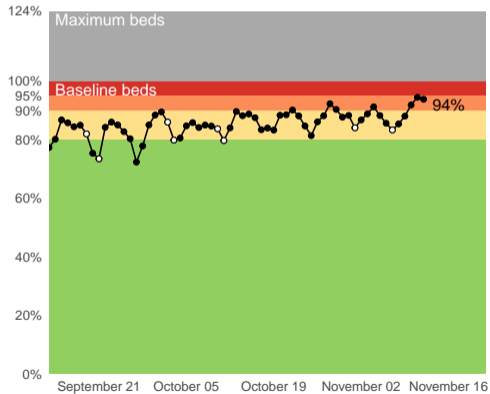
# Number of positive COVID-19 patients in Region 6 hospitals, I-Chart



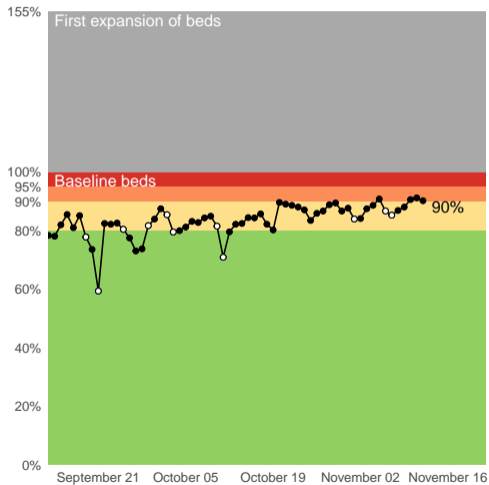
Source: OHA Hospital Resource Tracker on November 12th

# Percentage of beds in use in Southwestern Ohio hospitals

## Adult medical–surgical beds



## Adult critical care beds

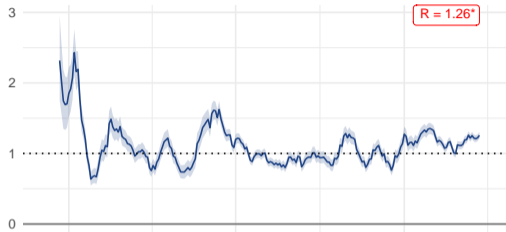


Source: SurgeNet data for Region 6 hospitals at 18:11 on November 12, 2020. Open circle indicates data for less than 90% of beds in SurgeNet.

Forecast demand

## Hamilton County, Ohio

Estimated R

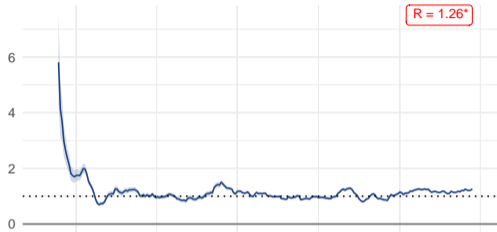


Daily incidence and seven day moving average

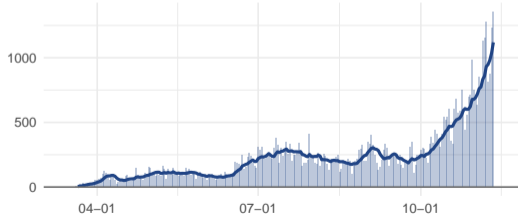


## 14 county area

Estimated R



Daily incidence and seven day moving average

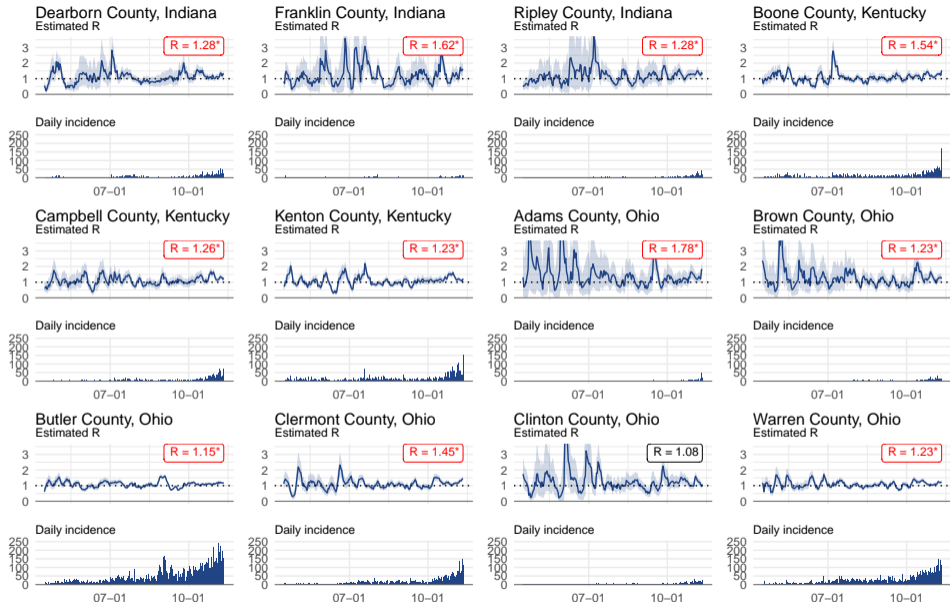


Mean serial interval (SI): 4.7 and standard deviation of SI: 2.9

Data from The New York Times, based on reports from state and local health agencies. Pulled on: 2020-11-12. <https://www.nytimes.com/interactive/2020/us/coronavirus-us-cases.html>

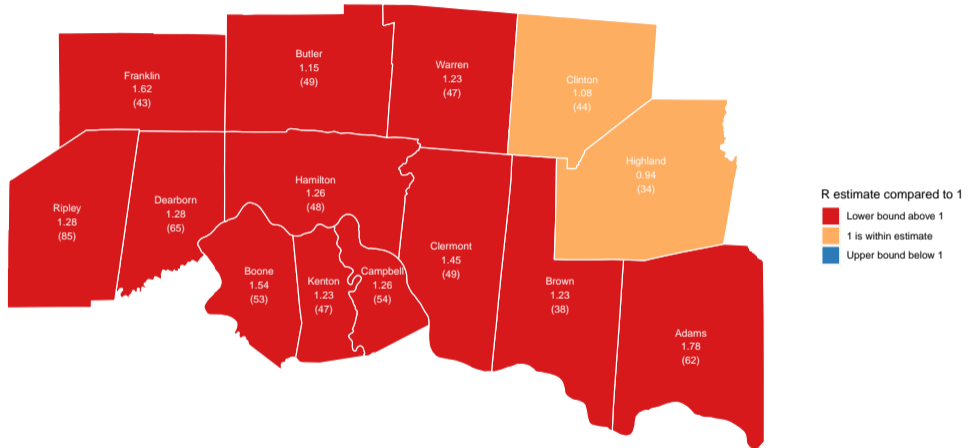


# Counties where the current R estimate is greater than 1



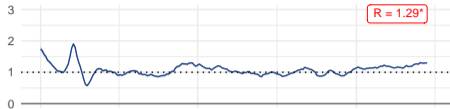
Red R value and \* indicate that lower bound is greater than 1. Data from The New York Times, based on reports from state and local health agencies. Pulled on: 2020-11-12.  
<https://www.nytimes.com/interactive/2020/us/coronavirus-us-cases.html>

Map of R estimates for 14 county area with average daily number of cases per 100,000 population in the last week  
Estimated R value is based on the rate of change in incidence cases and should be considered along with the count



Mean serial interval (SI): 4.7 and standard deviation of SI: 2.9. Data from The New York Times, based on reports from state and local health agencies.  
<https://www.nytimes.com/interactive/2020/us/coronavirus-us-cases.html> Pulled: 2020-11-12

## Ohio Estimated R



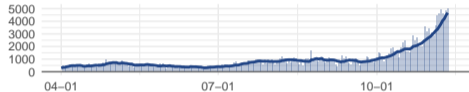
## Daily incidence and seven day moving average



## Indiana Estimated R



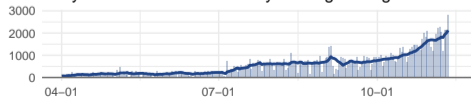
## Daily incidence and seven day moving average



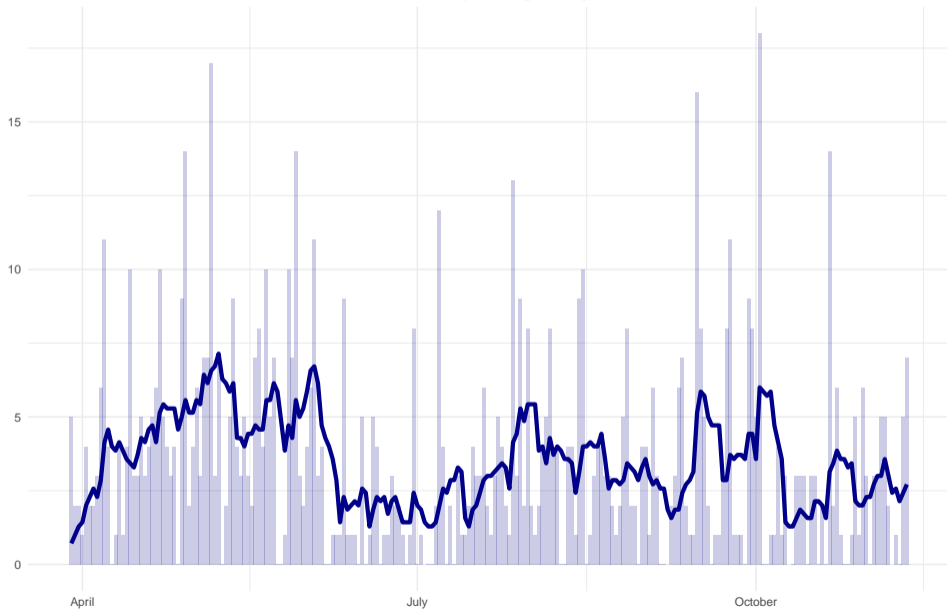
## Kentucky Estimated R



## Daily incidence and seven day moving average

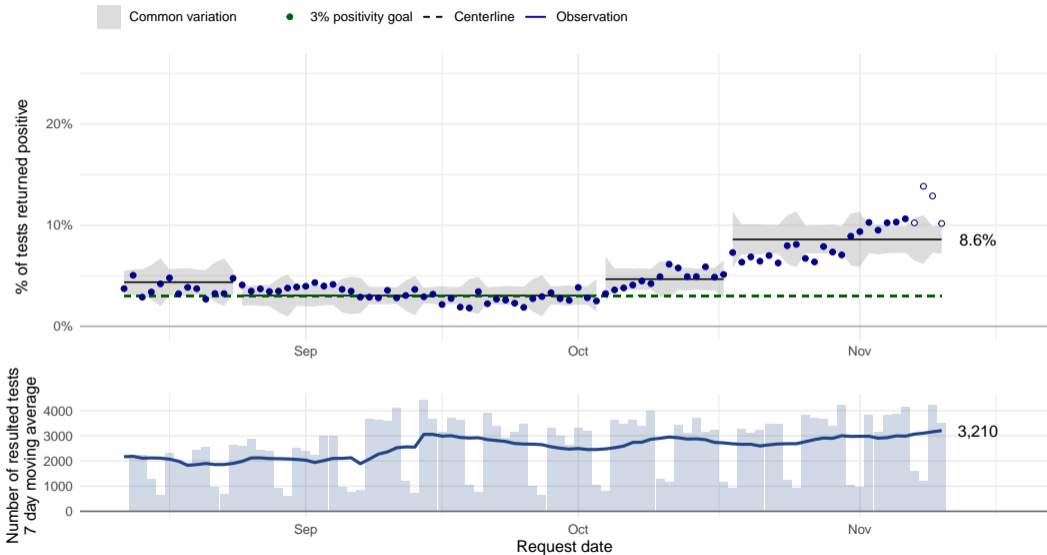


Number of COVID-19 deaths in 14 county area with 7 day moving average



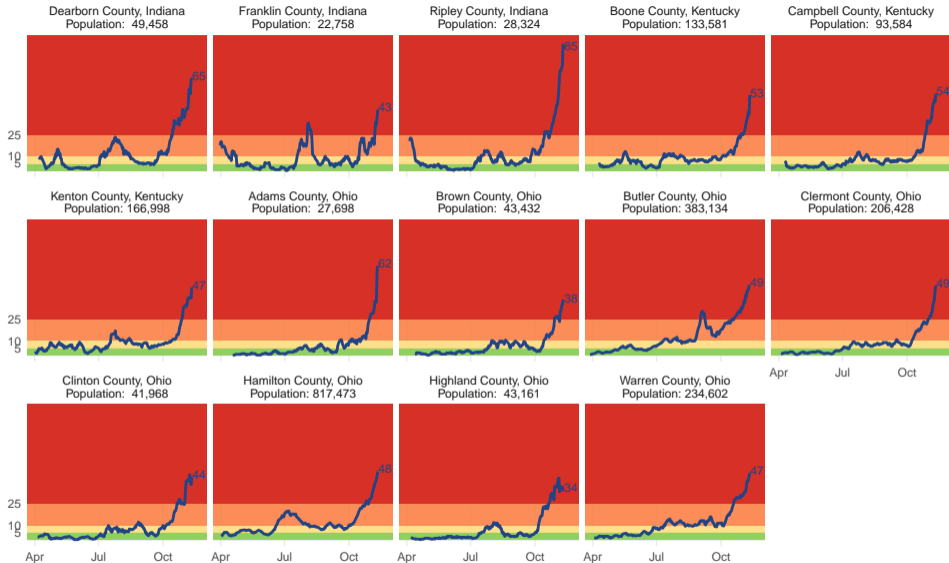
Data from The New York Times, based on reports from state and local health agencies. Pulled on: 2020-11-12. <https://www.nytimes.com/interactive/2020/us/coronavirus-us-cases.html>

# Percentage of test results returned positive in 14 county region



Open circles indicate points highly subject to change  
Source: The Health Collaborative data as of 11/12/2020.

## Seven day moving average of new Covid cases per 100,000 people in each county



Levels are those suggested by Massachusetts Testing, Tracing, and Supported Isolation collaborative, information can be found here: <https://ethics.harvard.edu/tsi-technical-handbook>.

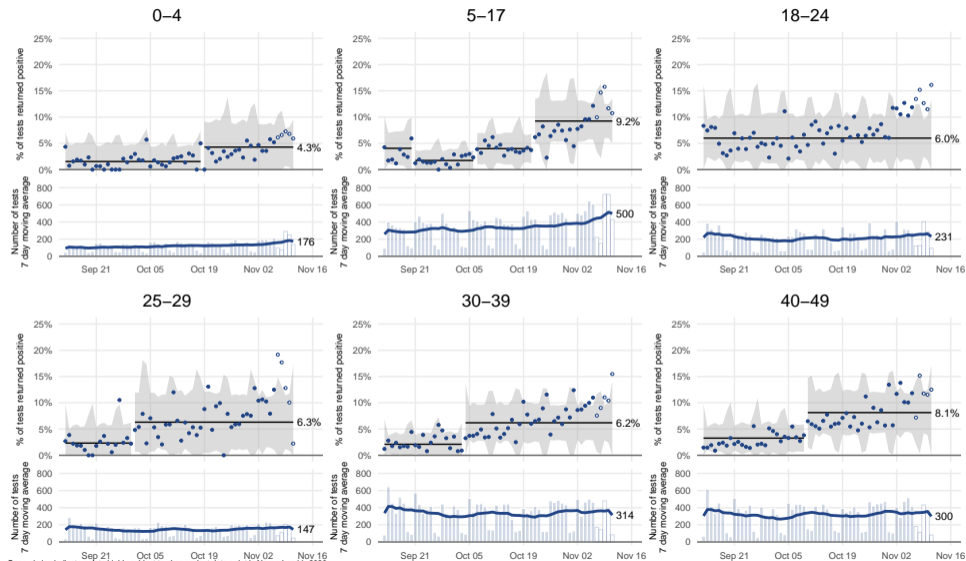
Per local leadership, the lowest threshold for our region is being set at 5 cases per 100,000

Data from The New York Times, based on reports from state and local health agencies.

<https://www.nytimes.com/interactive/2020/us/coronavirus-us-cases.html> Pulled: 2020-11-12

# Percentage of test results returned positive by age of patient for 14 county area

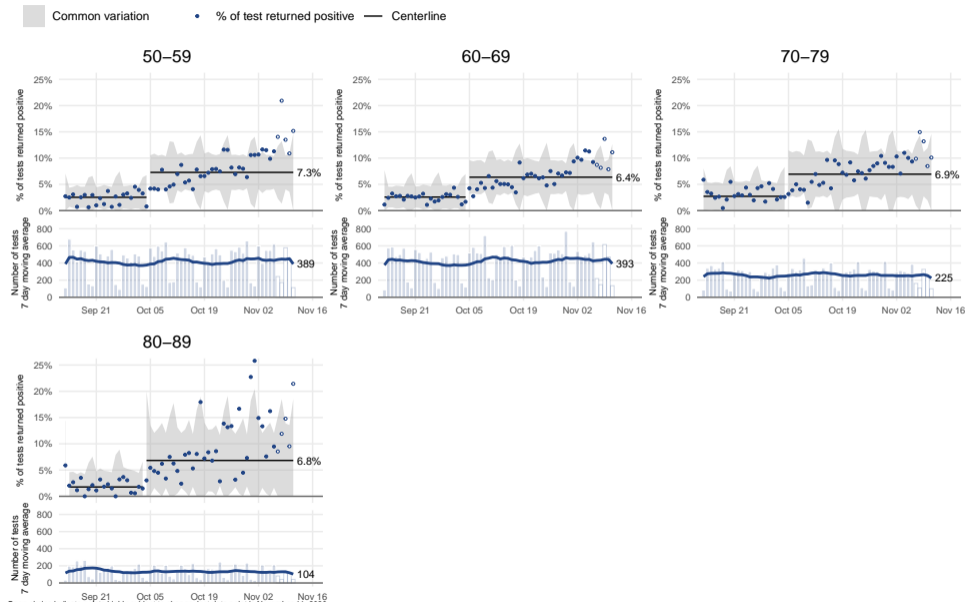
Common variation    • % of test returned positive    — Centerline



Open circles indicate points highly subject to change, last data point is November 11, 2020

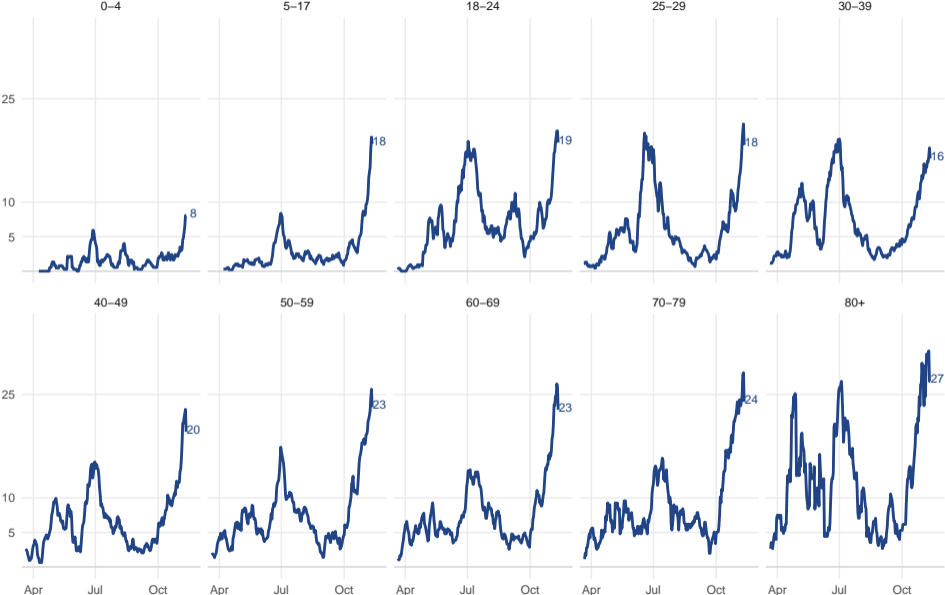
Source: The Health Collaborative data as of 11/12/2020.

# Percentage of test results returned positive by age of patient for 14 county area





# Seven day moving average of new Covid-19 positive tests per 100,000 by age group in Hamilton County



Source: The Health Collaborative as of 2020-11-12  
 Population estimates from US Census Population Estimates Program, Vintage 2019

Mobility

# Percentage change in weekday mobility in Hamilton County

