

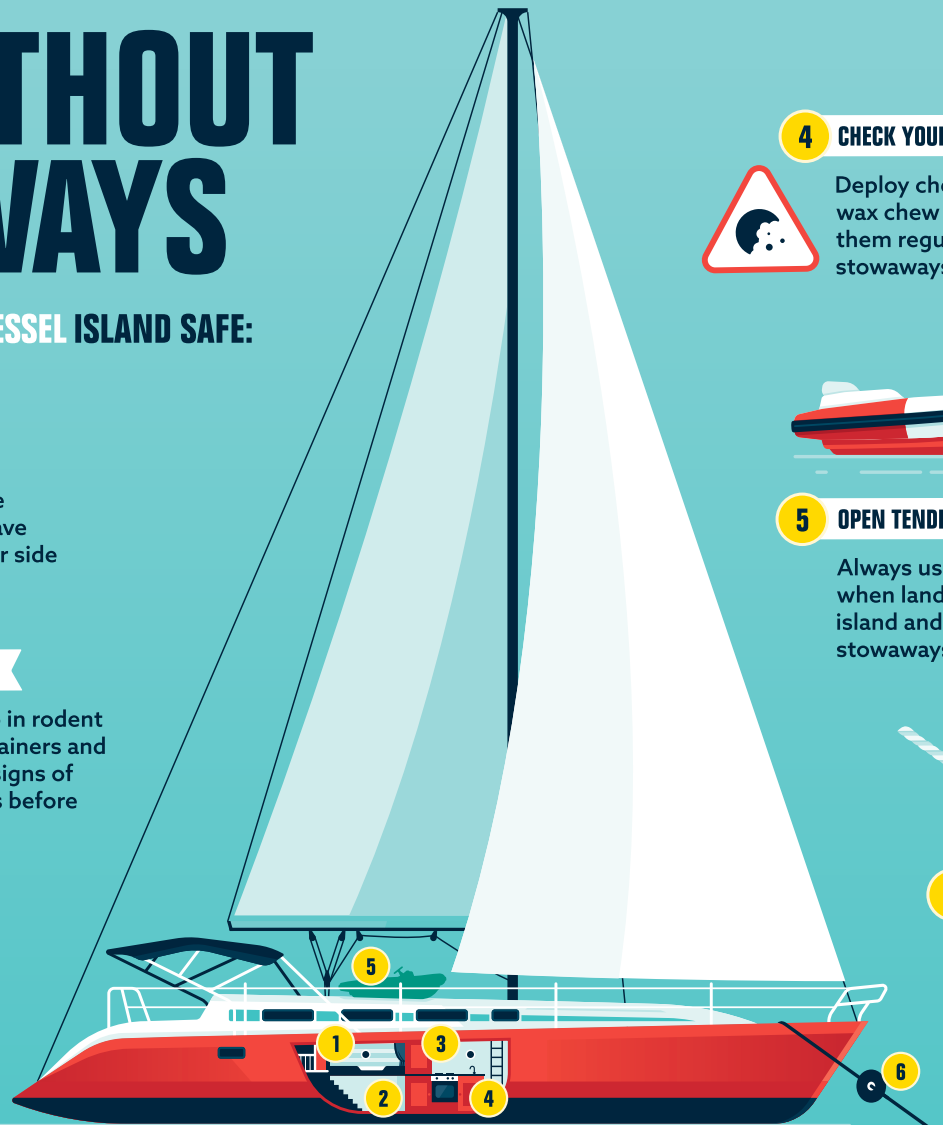
SAIL WITHOUT STOWAWAYS

SIMPLE WAYS TO MAKE YOUR VESSEL ISLAND SAFE:

1 LUGGAGE
 Repack luggage before boarding and never leave unattended on harbour side

2 CARGO
 Pack cargo in rodent proof containers and check for signs of stowaways before boarding

3 WASTE
 Store waste securely in rodent proof bins and dispose regularly using waste disposal facilities



4 CHECK YOUR HULL
 Deploy chew cards or wax chew blocks – check them regularly for signs of stowaways



5 OPEN TENDER
 Always use an open tender when landing on a seabird island and check for signs of stowaways before launching



6 RAT GUARDS
 Use rat guards on mooring lines and anchor chains

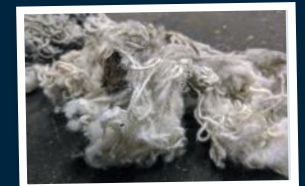
SIGNS OF STOWAWAYS



ENTRANCE HOLES



DROPPINGS



NEST MATERIAL



GNAW MARKS

Species of concern to UK islands include:



PROTECTING SEABIRDS FROM INVASIVE PREDATORS



RATS

MICE

STOATS

MINK

NEVER PUSH STOWAWAYS OVERBOARD
 (dead or alive)

PROTECTING ISLANDS FROM INVASIVE PREDATORS: A CHECKLIST

Thank you for your help to protect seabirds from invasive predators



Start of the season		On the water		Vessel out of water	
Boat	Luggage & Food	Landing / Anchoring	Travel between islands	Off-Season	
<ul style="list-style-type: none"> Fully inspect vessel for signs of stowaways: gnawed wires etc., droppings, bedding, entry holes 	<ul style="list-style-type: none"> Away from the boat, shake out any tents, bedding and equipment that has been stored unused before packing 	<ul style="list-style-type: none"> Always land using an open tender 	<ul style="list-style-type: none"> Repack bags before landing 	<ul style="list-style-type: none"> Remove all food items from the vessel 	
<ul style="list-style-type: none"> Set up rodent surveillance for the season ahead: biosecurityforlife.org.uk/boats 	<ul style="list-style-type: none"> Repack luggage as soon as possible before travelling 	<ul style="list-style-type: none"> Check local biosecurity advice at your destination 	<ul style="list-style-type: none"> Be aware you could pick up passengers along the way 	<ul style="list-style-type: none"> Secure possible rodent entry points 	
<ul style="list-style-type: none"> Brief crew on rodent prevention measures (overleaf) 	<ul style="list-style-type: none"> Pack food in rodent proof containers and do not take any damaged food packets 	<ul style="list-style-type: none"> Do not leave food waste or rubbish behind on an island 	<ul style="list-style-type: none"> Check rodent surveillance before approaching island 	<ul style="list-style-type: none"> Set rodent control measures onboard 	

WHAT TO DO IF YOU FIND EVIDENCE OF A STOWAWAY

- DO NOT LAND ON A SEABIRD ISLAND**
- NEVER PUSH STOWAWAYS OVERBOARD DEAD OR ALIVE!**
Rodents and other small mammals can swim many kilometres
- DO NOT ASSUME ONLY ONE INDIVIDUAL STOWAWAY IS ABOARD**
- DO RETURN TO A MAINLAND HARBOUR**
Deploy appropriate control measures: biosecurityforlife.org.uk/boats



Find out more at biosecurityforlife.org.uk

FUNDED BY



A PARTNERSHIP WITH



ADDITIONAL FUNDING FROM:

NatureScot, Natural England, Natural Resources Wales, and Department of Agriculture, Environment and Rural Affairs (Northern Ireland)