

# ORGANIC

DESIGNED by NATURE and **KNAUF**



PROCESSING INSTRUCTIONS

---

# CONTENTS

1	ORGANIC RANGE EDGE DETAILS	3
2	ORGANIC	4
3	ORGANIC TWIN	7
4	ORGANIC MINERAL	9
5	THE ORGANIC RANGE WALL-MOUNTED	11
6	ORGANIC CLIP	12

# ORGANIC RANGE EDGE DETAILS

INLAY PANEL  
Code: SK-04 [A]  
Profile: T24 & T35



CONCEALED  
DEMOUNTABLE  
Code: VK-10 [D]  
Profile: T35



DIPPED PANEL - T24/T35  
Code: SK-06 T24/T35 [E]  
Profile: T24 or T35



SILHOUETTE INLAY PANEL  
Profile: T15 Silhouette



BEVELLED ON ALL SIDES  
Code: AK-01  
Fixing: Screws



STRAIGHT EDGES ON  
ALL SIDES  
Code: AK-99  
Fixing: Screws



BEVELLED EDGE AND  
GROOVE ON ALL SIDES  
Code: VK-11  
Fixing: Organic Clip



# ORGANIC

## MOUNTING ON FRAMEWORK T24 OR T35

### ONLY MOUNT ON A FALSE CEILING

4 edges available:

- **SK-04 [A]** (straight edges) T24 - T35
- **SK-06 [E]** (semi-embedded edges) T24 (for 25mm panel) + edge E/SK-06 T35 (for 35mm panel)
- **VK-10 [D]** (hidden-framework edges) T35 (for 35mm panel)
- **SILHOUETTE/FINELINE** (shadow gap edges for 25mm panel)

#### MOUNTING

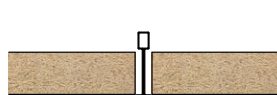
The most common mounting uses supports every 1,200mm, struts of 1,200 and 600mm. For heavier loads, or longer lengths, the supports will be placed at o.c. spacing every 600mm. For the values indicated in the table below (interior ceiling), the effects of the wind are not taken into consideration (due to the air porosity of the panels). The laying tolerance of the fixing points is 3mm.

Except where there are particular provisions for the ceiling, the deflections, under the 2 metre ruler, must be smaller than:

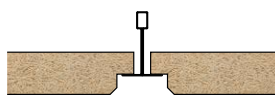
- $1/500^{\text{th}}$  of the length for non-visible framework
- $1/300^{\text{th}}$  of the length for visible framework.

#### NB:

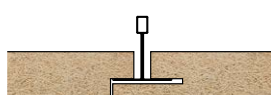
When installing on a suspended ceiling with removable hidden framework (edge D), the framework consists of the T35 support with a thickness of 35mm. The supports placed at o.c. spacing every 600mm must be accompanied by spacers on the plenum side to ensure the correct positioning of the framework. In certain configurations, the assembly can be reinforced by anti-lift clips and/or extra spacers. Height of the plenum for edges A, E and D: 12cm for 600 x 600 mm and 15cm for 1200 x 600mm.



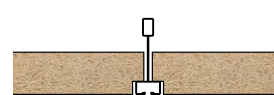
SK-04 [A]



SK-06 [E]



VK-10 [D]



SILHOUETTE/FINELINE

#### DISTANCE BETWEEN THE HANGER CLIPS, DEPENDING ON THE TILE AND THE O.C. SPACING BETWEEN THE SUPPORTS

Tile	Area density of the tile	Mounting T24		Mounting T35	
		o.c. spacing 1,200	o.c. spacing 600	o.c. spacing 1,200	o.c. spacing 600
Organic - 15mm	8kg/m <sup>2</sup>	1400	1500	1500	1500
Organic - 25mm	11kg/m <sup>2</sup>	1200	1500	1200	1500
Organic - 35mm	14kg/m <sup>2</sup>	1000	1200	1200	1200

#### ACCESSORIES

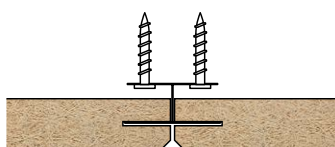
Clix T24/38 supports + Clix T24/32 (1,200) and/or T24/28 (600) struts.

# ORGANIC

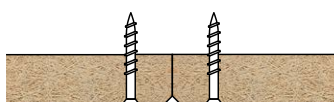
## INSTALLATION WITH MECHANICAL FIXING NON-REMOVABLE WALLS AND CEILINGS

- 3 types of edge:
  - Bevelled edges 4 sides IMF **VK-11**
  - Bevelled edges 4 sides VMF **AK-01**
  - Straight edges VMF **AK-99**
- 2 types of mounting:
  - IMF: invisible mechanical fixing using the Organic clip
  - VMF: visible mechanical fixing using screws
- 2 thicknesses: 25 or 35mm

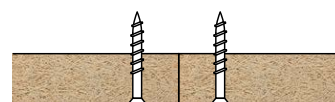
The panels should be wall-mounted above 1.80m for all products in the Organic range.



IMF VK-11



VMF AK-01



VMF AK-99

### PARTICULAR PROVISIONS

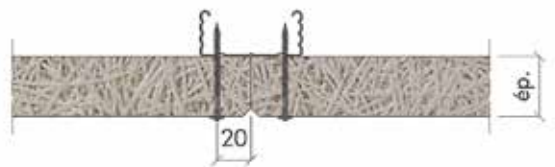
Depending on the type of panel and the medium, the panels can be fixed with screws or specific clips. The Organic panels are not very sensitive to humidity, but the fixing systems must be

protected against corrosion in the event of high humidity levels. For sports halls, resistance to impacts from balls requires mechanical protection such as a net, or the installation of a double CD 60 framework with reduced o.c. spacing.

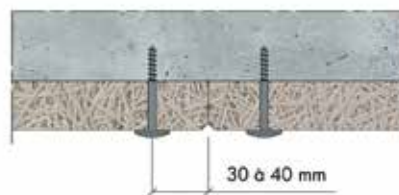
## MOUNTING ON A NON-FALSE INTERIOR CEILING

Visible Mechanical Fixing (VMF) Organic Tiles and Authentic Organic	Dimensions (in mm)	Framework - Accessories	Installation comments
Screwing onto metal framework Place the panels perpendicular to the framework	1,200 x 600 2,000 x 600	- CD 60 - Wooden bracket 60 x 30mm Wood screw or TX Drive screws Foot and head of CD 60 hanger clip	3 screws / width 600mm (4 screws / width in Organic Twin thickness 50 mm) 2cm from the edge O.c. spacing of 600mm (px L 1200) O.c. spacing of 500 mm (px L 2000)
Screwing directly into the concrete tile with screws	1,200 x 600 2,000 x 600	DDS <i>plus</i> concrete screws or MSP anchor fixings.	5 fixings per 1200 panel 6 fixings per 2000 panel
Invisible Mechanical Fixing (IMF) Organic Tiles	Dimensions (in mm)	Framework - Accessories	Installation comments
Organic clip on concrete	1,200 x 600 2,000 x 600	Clips pegged or inserted with shotfired fixing	Clip every 600mm max 2 fixings (px L 1200) 4 fixings (px L 2000)
Organic clip on CD 60 or wooden framework	1,200 x 600 2,000 x 600 thickness 25 and 35mm	Wooden framework and Organic TX Drive screws, Organic wood screws or Organic metal screws. Support of CD profiles: panel thickness 35mm: Support every 1.40m	In between 600 mm (px L 1200) In between 500 mm (px L 2000) Clip every 600mm max 2 fixings (px L 1200) 4 fixings (px L 2000)

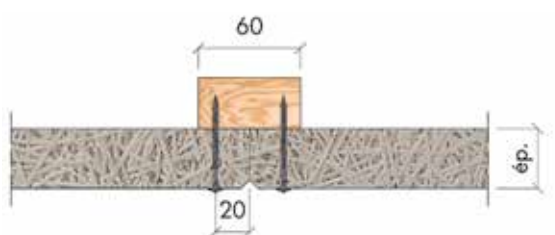
# ORGANIC



Screwing onto CD 60, at the joint between the panels



Screwing onto concrete, at the joint between the panels



Screwing onto wooden bracket, at the joint between the panels



Mount onto Organic CLIP

## MOUNTING ON A NON-FALSE EXTERIOR CEILING

Visible Mechanical Fixing (VMF) Organic Tiles and Authentic Organic	Dimensions (in mm)	Framework - Accessories	Installation comments
Screwing onto metal framework Place the panels perpendicular to the framework	1,200 x 600 2,000 x 600 thickness 25 and 35mm	CD 60 Hydro (over 20km from the coast) Support of CD profiles: panel thickness 25 and 35mm: Support every 1.40m Organic Metal screws	3 screws / width 600mm 2cm from the edge In between 600mm (px L 1200) In between 500mm (px L 2000)
Screwing onto wooden framework Place the panels perpendicular to the framework	1,200 x 600 2,000 x 600 thickness 25 and 35mm	Bracket 60 x 30 fixed every 1m Organic Wood screws	3 screws / width 600mm 2cm from the edge In between 600mm (px L 1200) In between 500mm (px L 2000)

# ORGANIC TWIN

PLACE ON FRAMEWORK T24 OR T35

ONLY ON A FALSE CEILING

2 edges available:

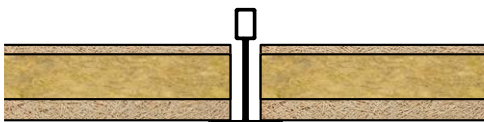
- **SK-04 [A]** (straight edges) T24 - T35
- **VK-10 [D]** (hidden-framework edges) T35  
(for 35mm panel)

## MOUNTING

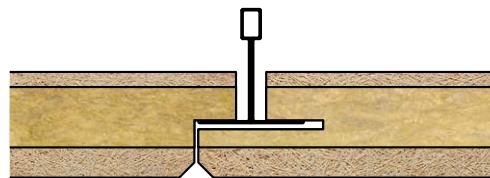
The most common mounting uses supports every 1,200mm, struts of 1,200 and 600mm. For heavier loads, or larger lengths, the supports will be placed at o.c. spacing of 600mm.

## NB:

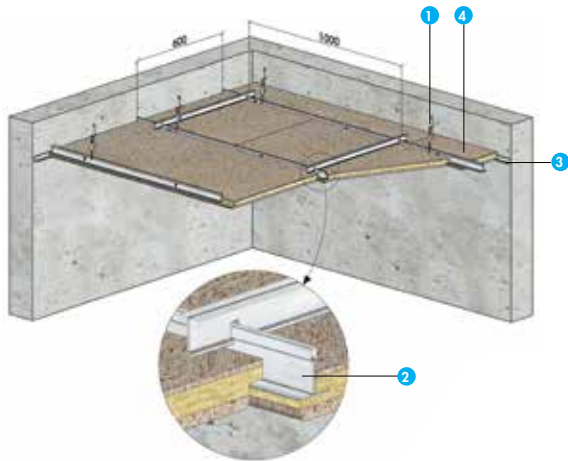
When installing on a suspended ceiling with removable hidden framework (edge D), the framework consists of the T35 support with a thickness of 35mm. The supports placed at o.c. spacing of 600mm must be accompanied by spacers on the plenum side to ensure the correct positioning of the framework. In certain configurations, the mounting can be reinforced by anti-lift clips and/or extra spacers. Height of the plenum for edges A, E and D: 12cm for 600 x 600mm. and 15cm for 1200 x 600mm. A/SK-04 (Straight edges) VK-10 [D] (hidden-framework edges).



SK-04 [A] (straight edges)



VK-10 [D] (hidden-framework edges)

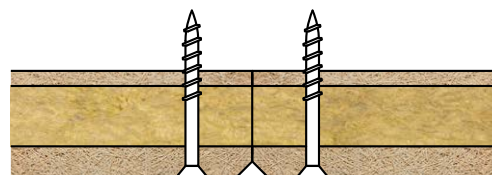


1. Hanger clip
2. Support
3. Angle irons
4. Panel

INSTALLATION WITH MECHANICAL FIXING

NON-REMOVABLE WALLS AND CEILINGS

- 1 type of edge: bevelled 4 sides
- 2 thicknesses: 35 or 50mm
- 1 type of placement:  
VMF: visible mechanical fixing using Organic TX-drive  
or Metal screws

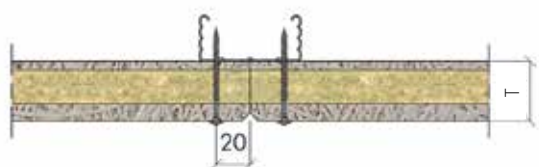


Installation of VMF AK-01 [B4] using screws

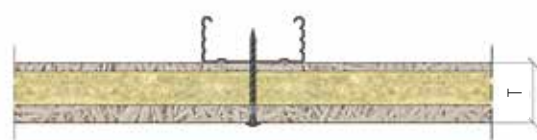
# ORGANIC TWIN

## MOUNTING ON A NON-FALSE INTERIOR CEILING

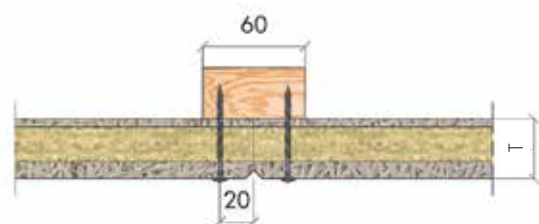
Visible Mechanical Fixing (VMF) Organic Mineral Tiles	Dimensions (in mm)	Framework - Accessories	Installation comments
Screwing onto metal framework Place the panels perpendicular to the framework	1,200 x 600 2,000 x 600	- CD 60 - Wooden bracket 60 x 30mm Organic TX Drive or Organic Metal Screws Foot and head of CD 60 hanger clip	3 screws / width 600mm (4 screws / width in Organic Twin thickness 50mm) 2cm from the edge O.c. spacing of 600mm (px L 1200) O.c. spacing of 500 mm (px L 2000)
Screwing directly into the concrete tile with screws	1,200 x 600 2,000 x 600	DDS <i>plus</i> concrete screws or MSP anchor fixings.	5 fixings per panel 1200 6 fixings per panel 2000



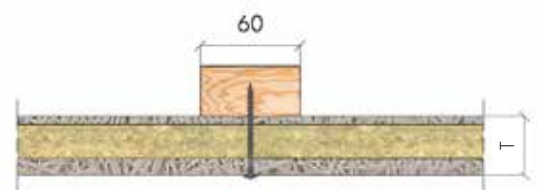
Screwing onto CD 60, at the joint between the panels



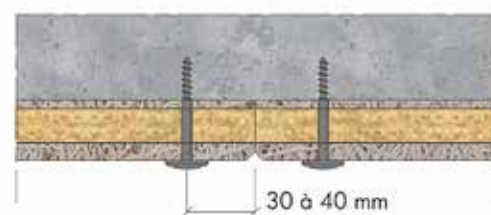
Screwing onto CD 60, mid-section



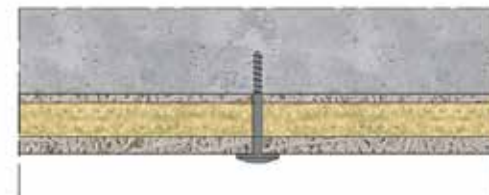
Screwing onto wooden bracket, at the joint between the panels



Screwing onto wooden bracket, mid-section



Screwing onto concrete, at the joint between the panels



Screwing onto concrete, mid-section

## MOUNTING ON A NON-FALSE EXTERIOR CEILING

Visible Mechanical Fixing (VMF) Organic Mineral Tiles	Dimensions (in mm)	Framework - Accessories	Installation comments
Screwing onto metal framework Place the panels perpendicular to the framework	1,200 x 600 2,000 x 600 thickness 25, 35 and 50mm	CD 60 Hydro (over 20 km from the coast) Organic Metal Screw Support of CD profiles: panel thickness 25, 35 and 50mm: Support every 1.40m	3 screws / width 600mm 2cm from the edge O.c. spacing of 600mm (px L 1200) O.c. spacing of 500mm (px L 2000)
Screwing onto wooden framework Place the panels perpendicular to the framework	1,200 x 600 2,000 x 600 thickness 25, 35 and 50mm	Bracket 60 x 30 fixed every 1m Organic Wood screw	3 screws / width 600mm 2cm from the edge In between 600mm (px L 1200) In between 500mm (px L 2000)

# ORGANIC MINERAL

## MOUNTING USING MECHANICAL FIXINGS

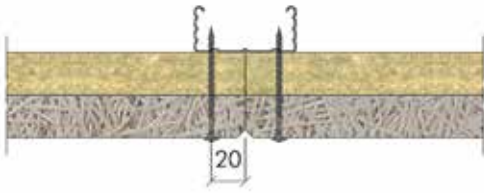
Used on walls and ceilings.

- 1 type of edge: [AK-01] bevelled 4 sides
- 5 thicknesses: 50, 75, 100, 125, 150mm
- 2 types of placement:
  - VMF with screws
  - IMF with Organic Clip

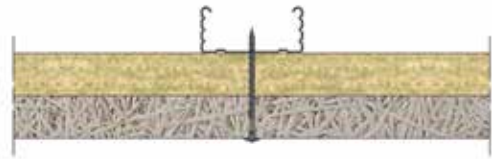
## MOUNTING ON A NON-FALSE INTERIOR CEILING

Visible Mechanical Fixing (VMF) Organic Mineral Tiles	Dimensions (in mm)	Framework - Accessories	Installation comments
Screwing onto metal framework Place the panels perpendicular to the framework	1,200 x 600 2,000 x 600	- CD 60 - Wooden bracket 60 x 30mm Organic TX Drive or Organic Metal screw Foot and head of CD 60 hanger clip	3 screws / width 600mm (4 screws / width in Organic Twin thickness 50mm) 2cm from the edge O.c. spacing of 600mm (px L 1200) O.c. spacing of 500 mm (px L 2000)
Screwing directly into the concrete tile with screws	1,200 x 600 2,000 x 600	DDS <i>plus</i> concrete screws or MSP anchor fixings.	5 fixings per panel 1200 6 fixings per panel 2000
Invisible Mechanical Fixing (IMF) Organic Mineral Tiles	Dimensions (in mm)	Framework - Accessories	Installation comments
Organic Clip on concrete	1,200 x 600 2,000 x 600	Clips pegged or inserted with shotfired fixing	Clip every 600mm max 2 fixings (px L 1200) 4 fixings (px L 2000)
Organic Clip on CD 60 or wooden framework	1,200 x 600 2,000 x 600 thickness 50, 75, 100, 125 and 150mm	Wooden framework and Organic TX Drive screw or Organic Wood screw CD 60 or TRPF screw Support of CD profiles: panel thickness 50 and 75mm: Support every 1.40m panel thickness 100 to 150mm: Support every 1.00m	O.c. spacing of 600mm (px L 1200) O.c. spacing of 500 mm (px L 2000) Clip every 600mm max 2 fixings (px L 1200) 4 fixings (px L 2000)

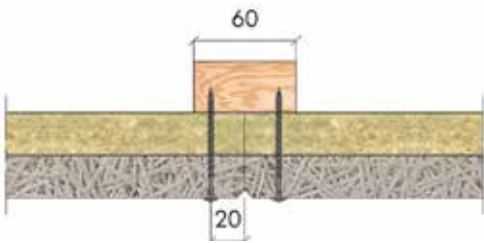
# ORGANIC MINERAL



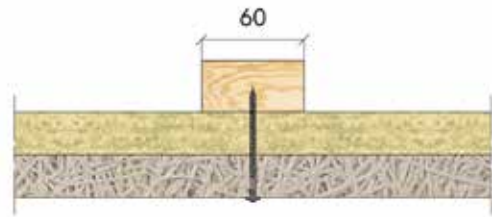
Screwing onto CD 60, at the joint between the panels



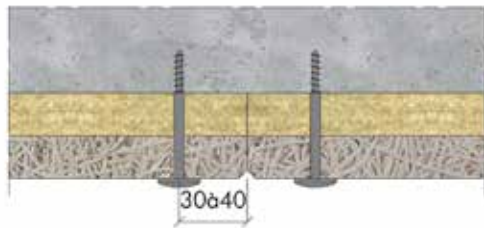
Screwing onto CD 60, mid-section



Screwing onto wooden bracket, at the joint between the panels



Screwing onto wooden bracket, mid-section



Screwing onto concrete, at the joint between the panels



Screwing onto concrete, mid-section



Mount onto IMF clip

## COMMENTS

Mounting with IMF means that either the first panel rests on the floor, or some load-spreading must be in place. Likewise, load-spreading must be used every 5m in height (wooden bracket or metal profile under the IMF).

## MOUNTING ON A NON-FALSE EXTERIOR CEILING

Visible Mechanical Fixing (VMF) Organic Mineral Tiles	Dimensions (in mm)	Framework - Accessories	Installation comments
Screwing onto metal framework Place the panels perpendicular to the framework	1,200 x 600 2,000 x 600 thickness 50, 75, 100, 125 and 150mm	CD 60 Hydro (over 20 km from the coast) Organic Metal screws Support of CD profiles: panel thickness 50 and 75mm: Support every 1.40m panel thickness 100 to 150mm: Support every 1.00m	3 screws / width 600mm 2cm from the edge O.c. spacing of 600mm (px L 1200) O.c. spacing of 500mm (px L 2000)
Screwing onto wooden framework Place the panels perpendicular to the framework	1,200 x 600 2,000 x 600 thickness 50, 75, 100, 125 and 150mm	Bracket 60 x 30 fixed every 1m Organic Wood screws	3 screws / width 600mm 2cm from the edge O.c. spacing of 600mm (px L 1200) O.c. spacing of 500mm (px L 2000)

# THE ORGANIC RANGE

## WALL-MOUNTED

- The Organic panels are not very sensitive to humidity, but the fixing systems must be protected against corrosion in the case of high humidity levels.
- It is recommended that the Organic panels be placed above a height of 1.80m to avoid users of the premises aggressively scraping them.
- For sports halls, resistance to impacts from balls requires mechanical protection such as a net.

## INSTALLATION ON INTERIOR WALL

Organic, Organic Twin, Organic Mineral: 1,200 x 600, 2,000 x 600mm.

Installation via mechanical fixing on interior wall	Accessories	comments
Screwing onto metal framework CD 60 fixed by Easy Click system CD 60	CD 60 vertical system Easy Click CD 60 Organic TX drive or Metal screw	3 screws / width 600mm - 2cm from edge O.c. spacing of 600mm (px L 1200) O.c. spacing of 500 mm (px L 2000) Height ≥ 2m from public-access spaces 9 fixings (px L 1200) - 15 fixings (px L 2000)
Screwing onto wooden framework	Bracket 60 x 30 vertical, fixed every 1m Organic TX drive or Wood screw	3 screws / width 600mm - 2cm from edge O.c. spacing of 600mm (px L 1200) O.c. spacing of 500 mm (px L 2000) Height ≥ 2m from public-access spaces 9 fixings (px L 1200) - 15 fixings (px L 2000)
Screwing directly onto concrete	DDS <i>plus</i> concrete screws or MSP anchor fixings.	6 fixings per panel 1200 Height ≥ 2m from public-access spaces
Screwing onto plasterboard (KM)	Organic TX drive screw	3 screws / width 600mm - 2cm from edge It is compulsory to screw onto the framework (o.c. spacing of framework 600mm max.) Height ≥ 2m from public-access spaces 9 fixings (px L 1200) - 15 fixings (px L 2000)
IMF clip on concrete (except Organic Twin and Organic Authentic)	Clips pegged or inserted with shotfired fixing	Clips every 600mm for Px L 1200 every 500mm for Px L 2000 2 fixings (px L 1200) - 4 fixings (px L 2000)
IMF clip on framework (except Organic Twin and Organic Authentic)	Wood or Metal	Clips every 600mm for Px L 1200 every 500mm for Px L 2000 2 fixings (px L 1200) - 4 fixings (px L 2000)

## INSTALLATION IN SHOOTING RANGE

Organic (thickness min. 25mm) or Organic Mineral (thickness min. 50mm): 1,200 x 600, 2,000 x 600mm.

Installation via mechanical fixing, on interior walls and ceilings. Horizontal mounting with staggered joints	Profile - accessories	Installation comments
IMVF clip on concrete	Clip pegged or inserted with shotfired fixing	Clips every 600mm depending on the length of the panels
IMVF clip on framework	Wooden brackets (60 x 40mm or 50 x 50mm)	Clips every 600mm max., depending on the length of the panels Mount perpendicular to the wooden brackets

# ORGANIC CLIP

## THE PRODUCT: PRESENTATION

Stainless steel positioning aid, of variable height for panels in the Organic range. Four triangular prongs which enable the panels to be fixed in place, one perforated deck which enables fastening to support.

## THE PRODUCT: WHAT IS IT FOR?

Invisible mechanical fastening of Organic and Organic Mineral panels for:

### ■ Indoor ceilings with:

- CD60 profiles
- 60x30 wooden strips
- Concrete slabs
- Plasterboard ceilings (clips to be screwed to rails)

### ■ Indoor pitched roof with:

- CD60 profiles (placed parallel to rafters, panels in direction of incline)
- 60x30 wooden strips
- Plasterboard ceilings (clips to be screwed to rails)

### ■ Indoor walls with:

- Concrete walls
- Plasterboard partitions (clips to be screwed to jambs)
- Providing protection in gymnasiums against balls being thrown



## CHARACTERISTICS: ORGANIC CLIP

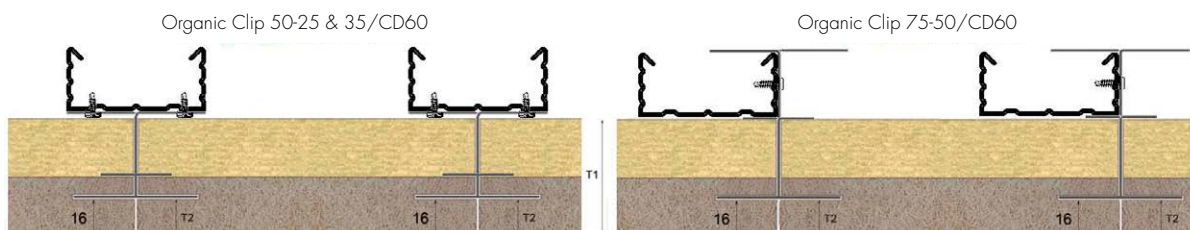
Denomination (tolerance $\pm 1$ mm)	25&35		50 – 25&35/CD60		75 – 50/CD60		100 – 75/CD60		125 – 100/CD60		150 – 125/CD60		175 – 150/CD60	
Clip height [mm]	21		49.2		66.3		91.3		116.3		141.3		166.3	
Width [mm]	86		86		86		86		86		86		86	
Pillar base [mm]	45.2		45.2		45.2		45.2		45.2		45.2		45.2	
Thickness [mm]	0.8		0.8		0.8		0.8		0.8		0.8		0.8	
Product code	656885		656886		656891		656888		656899		656898		656897	
Packaging (part/box)	100		100		100		100		100		100		100	
Protective covering class	Z140		Z140		Z140		Z140		Z140		Z140		Z140	
Compatible panel thicknesses <i>Direct fastening to support (1)</i>	25	35	50		75		100		125		150		175	
Dimensions with the panel (1)	32	37	65.2		82.3		107.3		132.3		157.3		182.3	
Compatible panel thicknesses <i>Fastening to CD60 framework (2)</i>	-		25	35	50		75		100		125		150	
Dimensions under CD 60	-		33.2	38.2	55.3		80.3		105.3		130.3		155.3	

The present edition renders the preceding one void and replaces it. At the time of implementation when it is required, make sure that it is still valid. The information contained in this sheet is for informative purposes only. It is the responsibility of the installer to check that the planned work is feasible and in conformity with regulations, valid codes of professional practice and technical documentation from the manufacturer (technical opinions, test reports, documents providing a framework for implementation...). The manufacturer is not responsible for any implementation which does not conform to the provisions of the present document. The photos and diagrams are both intended to act as a guide, and on no account should be considered as contractual documents.

# ORGANIC CLIP

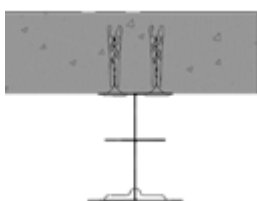
## CHOICE OF CLIP, DEPENDING ON THE POSITIONING METHOD

Example of positioning for Organic Mineral 50 panel



## POSITIONING DETAILS

Direct implementation with support (1)

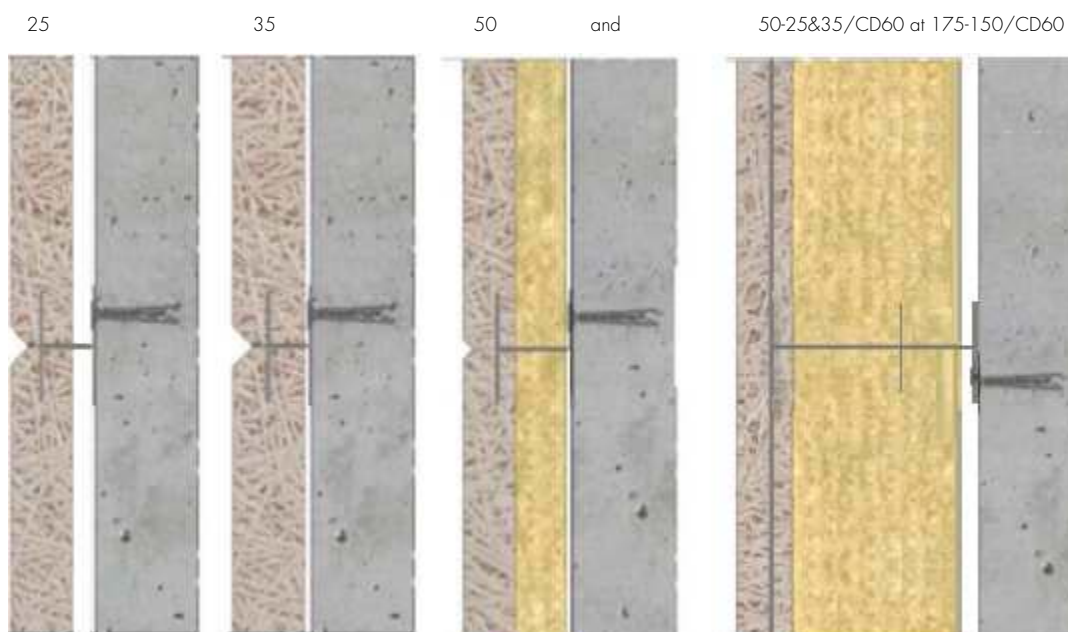


or CD60 (2)



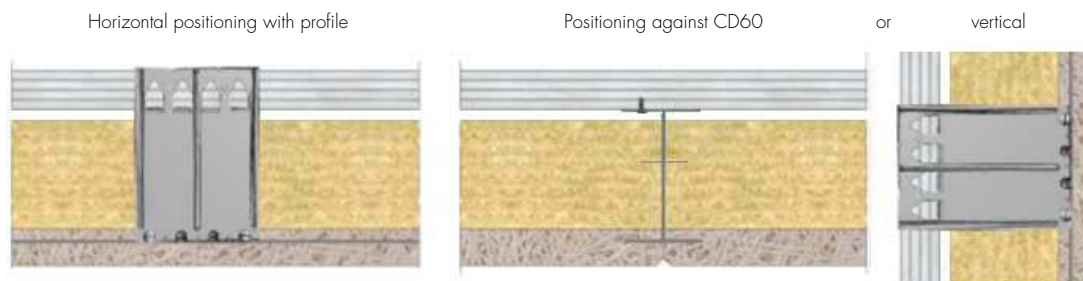
## IMPLEMENTATION

Basic diagram of direct positioning with concrete wall



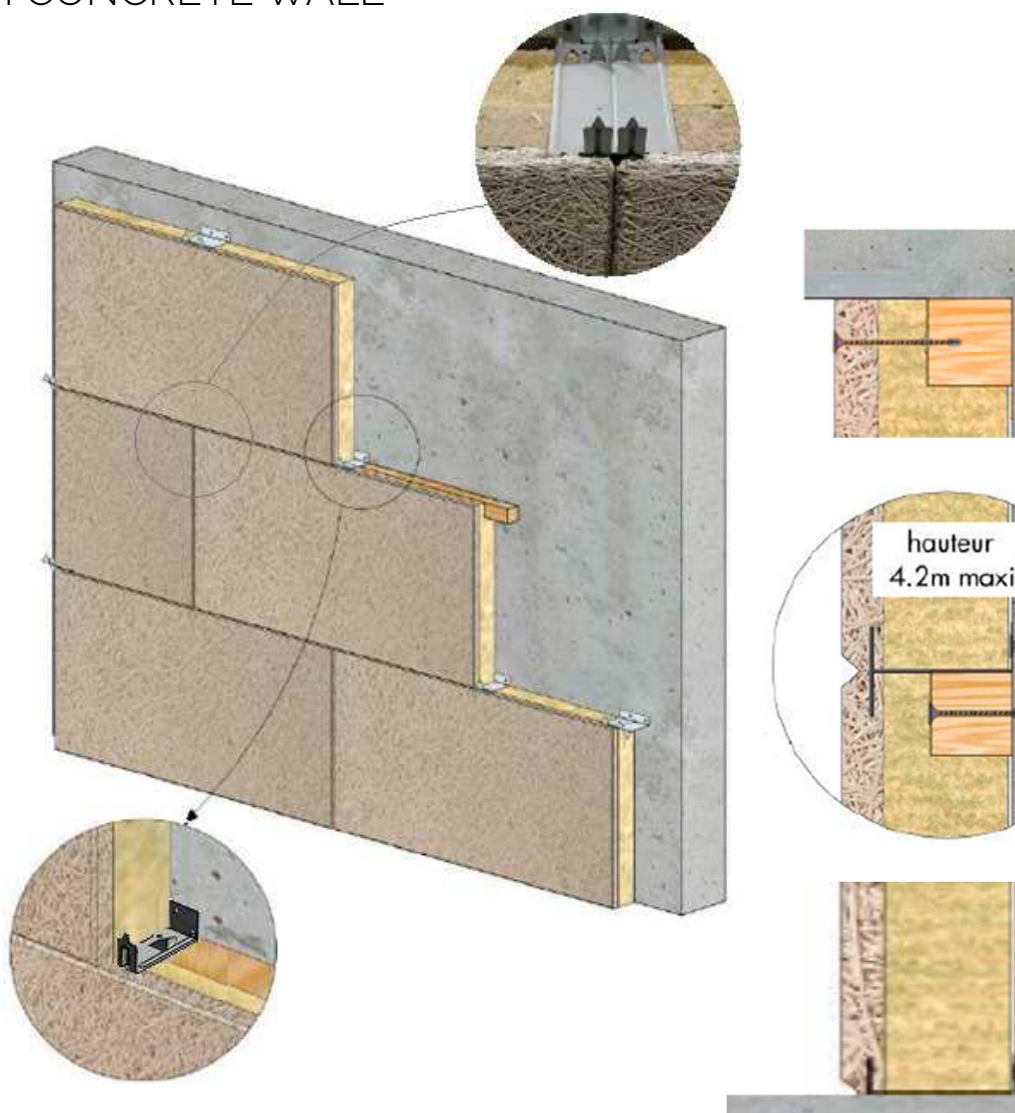
# ORGANIC CLIP

Basic diagram of positioning with CD60



The clip will be held in place on the CD60 by two TRPF screws.

## BASIC DIAGRAM OF DIRECT POSITIONING WITH CONCRETE WALL



# ORGANIC CLIP

## IMPLEMENTATION

The panels must be placed in a stone seam.



The fixing feet of the Organic Clip which fit into the groove of the panel should always be furthest apart at the corner where two panels meet.

In order to place the first Organic Clip on the edges, the fixing feet will need to be cut on one side.

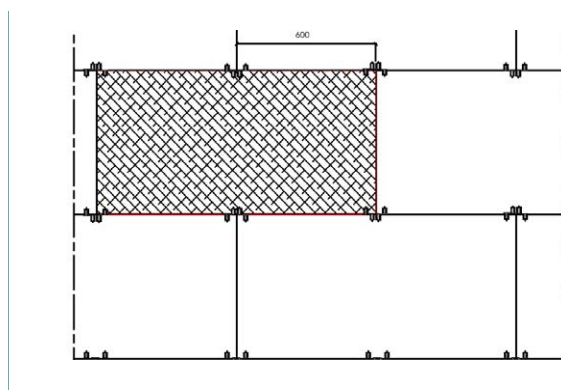


### THE NUMBER OF ORGANIC CLIPS, DEPENDING ON THE PANEL LAYOUT:

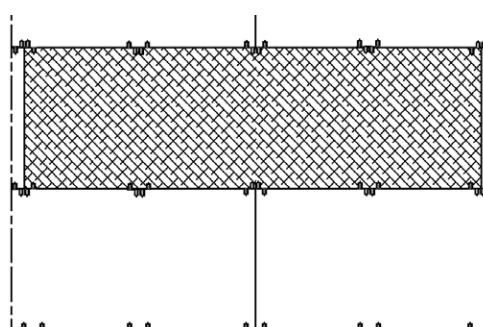
Quantitative fastening method	600X600	600X1200	600x2000
Organic Clip	2.8/m <sup>2</sup> or 1/panel	2.8/m <sup>2</sup> or 2/panel	3.4/m <sup>2</sup> or 4/panel

### EXAMPLE OF POSITIONING ORGANIC CLIPS IN ORGANIC PANELS

2 fastenings per 600x1200 panel



4 fastenings per 600x2000 panel



**Organic is a registered  
trademark of the Knauf Group**

**Knauf Insulation B.V.**  
+ 31 (0)162 - 42 12 45  
customerservice.nl@knaufinsulation.com

[www.organic.design](http://www.organic.design)

**DISCLAIMER**

Our general sales and delivery conditions apply to all our offers, communications and agreements, notwithstanding any provision to the contrary that can be found on our order forms or elsewhere. An overview of our general terms and conditions can be found on: [www.organic.design](http://www.organic.design). Extreme caution was observed when putting together and processing the information, texts and illustrations in this document. Nevertheless, errors cannot quite be ruled out. The publisher and editors cannot assume legal responsibility or any liability whatever for incorrect information and the consequences thereof.