

ICBBI-42UFDID/S



## FEATURES

- \_\_\_\_\_ Rigorously tested to ensure decades of use
- \_\_\_\_\_ Exceptional support from Customer Care team
- \_\_\_\_\_ LED Lighting for brighter interior
- \_\_\_\_\_ Dual refrigeration keeps food fresher longer
- \_\_\_\_\_ Air purification system fights spoilage, odours
- \_\_\_\_\_ Microprocessor control assures peak performance
- \_\_\_\_\_ Crispers and deli drawers in low-temp, high-humidity zones for optimum freshness
- \_\_\_\_\_ Over-and-under refrigerator/freezer storage
- \_\_\_\_\_ Freshness cards for maximum food preservation
- \_\_\_\_\_ Magnetic door seal system locks in cold air
- \_\_\_\_\_ Automatic ice maker with "max ice" feature
- \_\_\_\_\_ Adjustable shelves for maximum convenience
- \_\_\_\_\_ Soft-close deli drawer for meats, cheeses and more
- \_\_\_\_\_ Discreet interior water dispense with advanced filtration
- \_\_\_\_\_ Maximum capacity in a 107 cm French door model
- \_\_\_\_\_ Two-column shelving for customized storage

## ACCESSORIES

Grilles for 2108 mm or 2235 mm finished height (2134 mm is standard)

Accessories are available through an authorized dealer.  
For local dealer information, visit [subzero-wolf.com/locator](http://subzero-wolf.com/locator).



## HANDLE OPTIONS

PRO



TUBULAR



## PRODUCT DETAILS

### REFRIGERATOR

- Internal water dispenser
- 6 Adjustable glass shelves
- 1 High-humidity drawer with dividers
- 2 Storage drawers
- 4 Adjustable door shelves
- 2 Stationary door shelves
- 2 Adjustable dairy compartments
- Air purification system

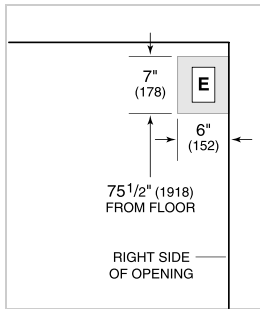
### FREEZER

- Automatic ice maker
- Full extension drawer with 2-tier wire baskets
- Water filtration system

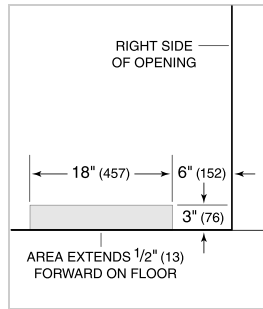
**PRODUCT SPECIFICATIONS**

Model	ICBBI-42UFDID/S
Dimensions	1067mmW x 2134mmH x 610mmD
Door Clearance	565mm
Drawer Clearance	600mm
Weight	264 kg
Refrigerator Gross Capacity	514 L
Freezer Gross Capacity	179 L
Electrical Supply	220-240 VAC; 50/60 Hz
Electrical Service	≤ 4 A
Receptacle	3-prong grounding-type

**ELECTRICAL**



**PLUMBING**



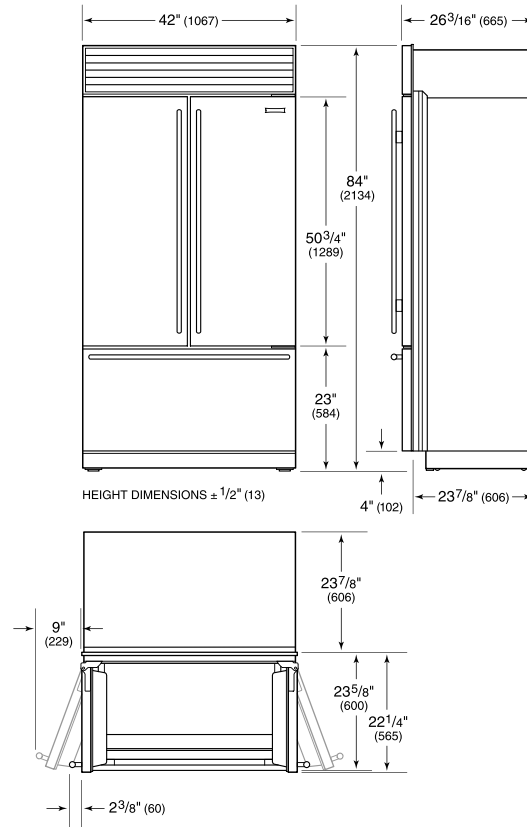
NOTE: Dimensions in parenthesis are in millimeters unless otherwise specified

**INTERIOR VIEW**

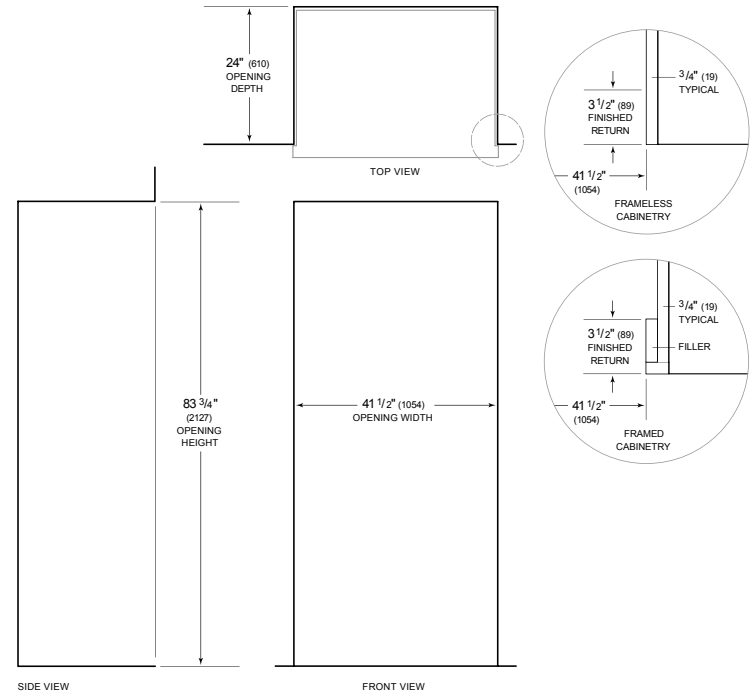


This illustration is intended for interior reference only and may not represent the exterior of the model being specified.

**DIMENSIONS**



**STANDARD INSTALLATION**



NOTE: 3 1/2" (89) finished returns will be visible and should be finished to match cabinetry. Shaded line represents profile of unit.