

Flat 2 The Barracks, 256 Crompton Road, Macclesfield, SK11 8HB



MUST BE VIEWED. A delightful 1 bedroom ground floor apartment, located on an attractive development and lying within walking distance of Macclesfield town centre where there is an array of shops, restaurants and of course the main line train station offering a regular service to London Euston and Manchester Piccadilly. The property benefits from OFF ROAD PRIVATE PARKING and under floor heating and briefly comprises Communal entrance vestibule, Apartment front door leading into the lounge/dining/kitchen area with french doors to the front elevation opening onto a walled paved area, ideal for a small garden table and chairs. Kitchen is open from the lounge diner and offers modern units with built in 4 ring gas hob, oven and grill with extractor above. Bathroom with shower over the bath. Double size bedroom with windows looking out onto a walled gravel area ideal for flower pots. Outside to the front of the property is a parking area with one allocated space. Under floor heating.

Asking Price £115,000

Lounge/Diner

11.8' (3m 59cm) x 13.49' (4m 11cm)

A good size living/dining area with TV point, power points, wall mounted cupboard housing electric fuse box, thermostat, laminated floor and french doors with windows above leading to the walled paved patio area. Ceiling light. Opening to:-



Kitchen area

9.99' (3m 4cm) x 5.42' (1m 65cm)

Modern kitchen with grey tiled flooring, modern light wood units, and black mottled effect work tops. Recess and plumbing for washing machine, recess for fridge freezer, built in 4 ring gas hob with oven and grill and extractor hood above, stainless steel single drainer sink unit with tiled splash backs. Wall mounted boiler. 3 double electric power points. Ceiling down lighters



Bedroom

12.91' (3m 93cm) x 8.33' (2m 53cm)

Double size bedroom with laminated floor, ceiling down lighters, wall mounted thermostat control, alarm sensor, 2 double power sockets. Window to the rear with walled gravel area.



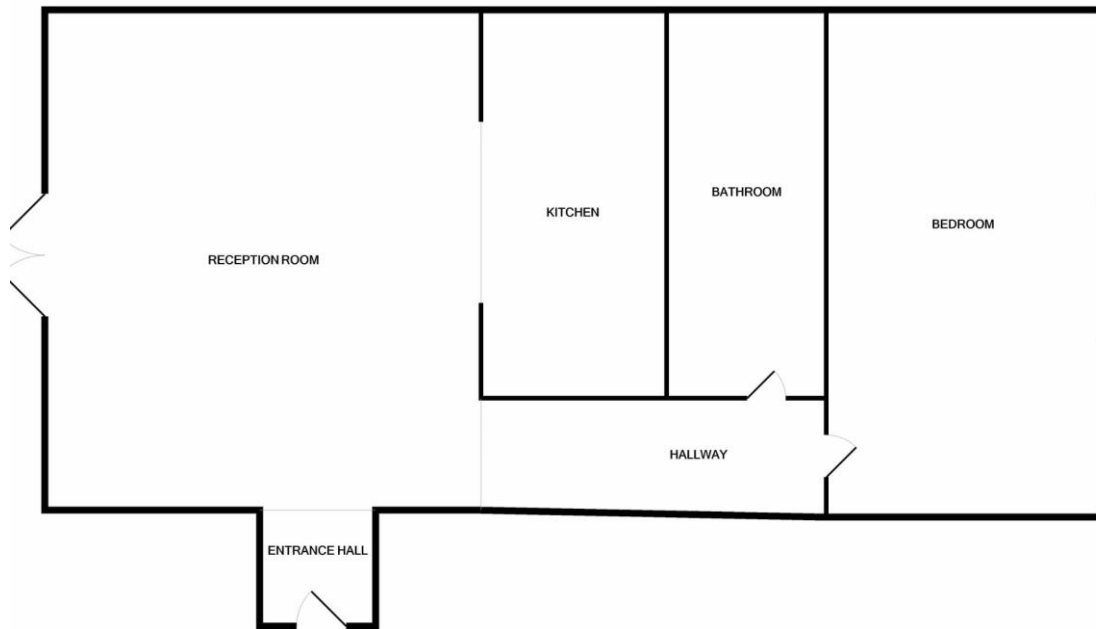
Bathroom

9.345' (2m 84cm) x 4.89' (1m 49cm)

Modern white bathroom suite with bath and shower above. Fitted shower screen, W.C. and pedestal wash hand basin. Tiled grey flooring, and white tiled splash backs. Xpelair, shaver point and ceiling down lighters.







Whilst every attempt has been made to ensure the accuracy of the floor plan contained here, measurements of doors, windows, rooms and any other items are approximate and no responsibility is taken for any error, omission, or mis-statement. This plan is for illustrative purposes only and should be used as such by any prospective purchaser. The services, systems and appliances shown have not been tested and no guarantee as to their operability or efficiency can be given.
Made with Metropix ©2020