



- Charming Mid-Terraced Stone Cottage
- Amazing Views to Front
- Porch
- Spacious Lounge
- Kitchen
- Two Bedrooms
- Loft Space with Shower Room
- Rear Garden
- Beautiful Location with Open Fields to Front

4 Latham Row, Horwich, Bolton, BL6 6QZ

Welcome to Latham Row... A beautiful garden fronted stone cottage, tucked away in Horwich and overlooking open fields and offering all the appeal of rural living with easy access to local amenities and modern conveniences. Briefly comprising of a porch, spacious lounge, kitchen, two well-sized bedrooms, a 3-piece family bathroom and a loft space for additional storage, with a handy shower room. Externally, the rear garden has a lawned area surrounded by mature planting, with a wooden decked terrace to enjoy the sunshine. Viewing is highly recommended to appreciate the charm of this home and the stunning location.

A Closer Look...

Walk through the front garden and porch, into the welcoming lounge. Newly carpeted throughout, there's ample space for your furniture in front of the gas fireplace with plenty of natural light. The kitchen sits to the rear of the home with fitted base and wall units and plumbing provisions for a cooker beneath the extractor hood, fridge-freezer and washing machine. A door leads to the rear garden.

Off to Bed...

Upstairs, you'll find the master bedroom with fitted furniture and a window framing those gorgeous views to the front of the home. Bedroom two also benefits from fitted furniture, and is currently configured for a single bed - without the fitted furniture it would accommodate a double bed if required. The family bathroom has fully tiled elevations in sleek white with contemporary patterns, with a bathtub, W.C., vanity basin and chrome heated towel rail. Up the next flight of stairs, you'll find a bright and airy loft space with fitted furniture for organised storage and two Velux windows looking out towards the countryside. A handy shower room with a walk-in electric shower, W.C. and pedestal wash basin also offers convenience for busy households.

The Garden...

To the rear of the home is a well-sized garden, with stone flagged patio and steps leading up to a lawn surrounded by mature planting for privacy - including your own apple tree! To the end of the garden is wooden decked terrace to enjoy the sunshine and the peace of this location. The front garden is equally charming, with a lawn and mature planting creating an attractive home.

The Location...

Latham Row is a idyllic spot in Horwich, nestled away with fantastic countryside views to the front of the property. These homes rarely come to market, and it's easy to see why! Being within easy distance of popular commuting links, Middlebrook Retail Park and local amenities, while also being on the doorstep of fabulous country walks.

£275,000

www.williamthomasestates.co.uk

454 Darwen Road, Bromley Cross, Bolton, BL7 9DX

Front Elevations



Porch



Lounge



Kitchen



First Floor Landing



Master Bedroom



Bedroom Two



Attic and Shower Room



Rear Garden





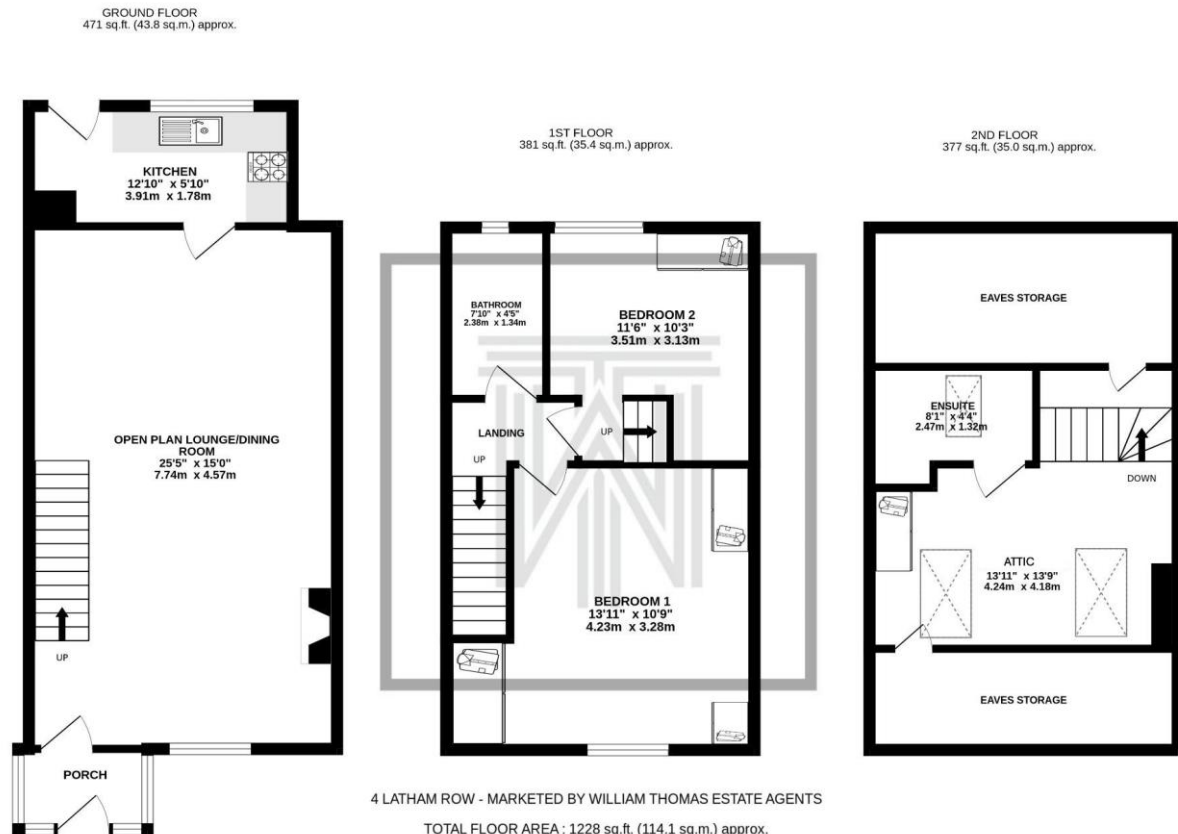
Front Garden



Agents Notes

William Thomas Estates for themselves and for vendors or lessors of this property whose agents they are given notice that: (i) the particulars are set out as a general outline only for the guidance of intended purchasers or lessees and do not constitute nor constitute part of an offer or a contract. (ii) all descriptions, dimensions, reference to condition and necessary permissions for use and occupation and other details are given without responsibility and any intending purchasers or tenants should not rely on them as statements or representations of fact but must satisfy themselves by inspection or otherwise as to the correctness of each of them (iii) no person in the employment of William Thomas Estates has authority to make or give any representations or warranty whatever in relation to this property

4 Latham Row, Horwich, Bolton, BL6 6QZ



Whilst every attempt has been made to ensure the accuracy of the floorplan contained here, measurements of doors, windows, rooms and any other items are approximate and no responsibility is taken for any error, omission or mis-statement. This plan is for illustrative purposes only and should be used as such by any prospective purchaser. The services, systems and appliances shown have not been tested and no guarantee as to their operability or efficiency can be given.
Made with Metropix ©2025