



2 Framefield Drive, Solihull B91 2SR

Price Guide **£500,000**

- Beautifully Presented Detached Residence
- Four/Five Bedrooms
- Superb Extended Dining Kitchen
- Quiet Cul De Sac Location
- No Chain
- Energy Efficiency Rating - D

0121 709 3300



## 2 Framefield Drive, Solihull B91 2SR

An exceptionally presented extended four/five bedroom detached residence situated in the highly sought after location appointed and decorated to a very high standard and within walking distance to Solihull town centre. The property falls within excellent school catchments and briefly comprises welcoming hallway, cloakroom/wc, spacious lounge, MAGNIFICENT dining kitchen, study/GF bedroom 5, utility, four bedrooms, refitted family bathroom, good sized rear garden, single garage. NO CHAIN

### APPROACH

Via block paved drive, lawned area with trees and shrubs and open canopy car port leading to front door.

### HALLWAY

Having laminate flooring, central heating radiator, ceiling light point, under-stairs storage cupboard and stairs rising to first floor.

### WC

Having laminate flooring, obscure double glazed window, low level WC and pedestal wash hand basin.

### LOUNGE

**19' 2" (5.84M) X 10' 11" (3.33M)**

Having carpet flooring, two double glazed windows, central heating radiator, ceiling light point and fireplace.

### KITCHEN / DINER

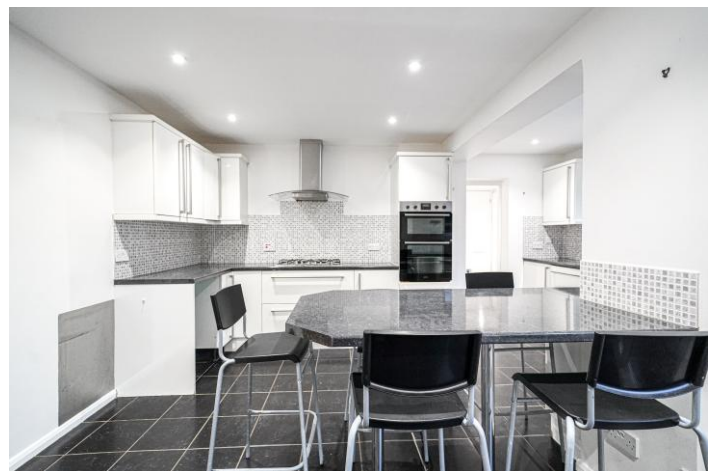
**19' 2" (5.84M) X 16' 5" (5M)**

Having tiled flooring, central heating radiator, two double glazed windows, ceiling spotlights, sliding patio doors, matching wall and base units, built in appliances and sink with drainer.

### DOWNSTAIRS BEDROOM (REAR)

**15' 4" (4.67M) X 6' 10" (2.08M)**

Having laminate flooring, central heating radiator, double glazed window, ceiling light point and sliding patio door.



**BEDROOM ONE (FRONT)**  
**11' 1" (3.38M) X 10' 2" (3.1M)**

Having carpet flooring, central heating radiator, double glazed window, ceiling light point and built-in storage.

**BEDROOM TWO (FRONT)**  
**8' 10" (2.69M) X 9' 10" (3M)**

Having carpet flooring, central heating radiator, double glazed window, ceiling light point and built-in storage.

**BEDROOM THREE (REAR)**  
**8' 10" (2.69M) X 7' 9" (2.36M)**

Having carpet flooring, central heating radiator, double glazed window, ceiling light point and built-in storage.

**BEDROOM FOUR (REAR)**  
**10' 2" (3.1M) X 10' 3" (3.12M)**

Having laminate flooring, central heating radiator, double glazed window and ceiling light point.

**FAMILY BATHROOM**  
**7' 5" (2.26M) X 5' 11" (1.8M)**

Having lino flooring, central heating radiator, double glazed window, bath with shower over, pedestal wash hand basin, low level WC and ceiling light point.

**SINGLE GARAGE**  
**9' 3" (2.82M) X 9' 0" (2.74M)**

Up & over door, power & lighting

**REAR GARDEN**

Having decked area, patio area, lawn with trees and shrubs and wooden fence panel borders.

**TENURE**

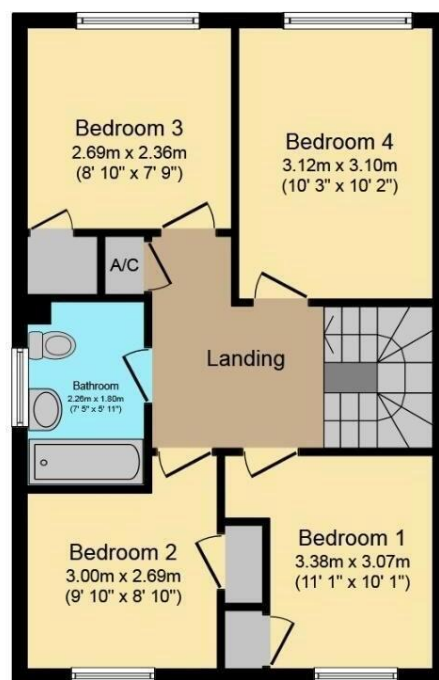
We have been advised that the property is Freehold. This is subject to verification by your Solicitor.





## Ground Floor

Floor area 85.0 sq. m. (915 sq. ft.) approx



## First Floor

Floor area 54.0 sq. m. (581 sq. ft.) approx

Total floor area 139.0 sq. m. (1,496 sq. ft.) approx

This plan is for illustration purposes only and may not be representative of the property. Plan not to scale.

Powered by audioagent.com



2 Manor Walk  
High Street  
Solihull B91 3SX  
Tel: 0121 709 3300  
Email: [info@bartleys-uk.com](mailto:info@bartleys-uk.com)

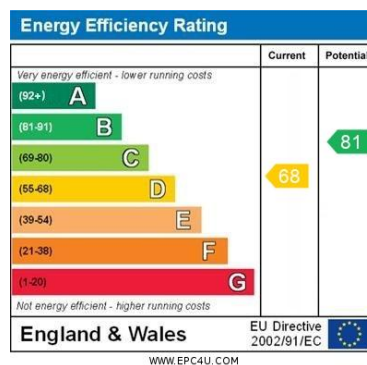
[Zoopla.co.uk](http://Zoopla.co.uk)

[FindaProperty.com](http://FindaProperty.com)

[rightmove.co.uk](http://rightmove.co.uk)  
The UK's number one property website

[The Property Ombudsman](http://ThePropertyOmbudsman.org)  
SALES

[Radarhomes.co.uk](http://Radarhomes.co.uk)  
The UK's number one property website



WWW.EPC4U.COM

B750 Printed by Ravensworth 01670 713330

No statement in these details is to be relied upon as representation of fact, and purchasers should satisfy themselves by inspection or otherwise as to the accuracy of the statements contained within. These details do not constitute any part of any offer or contract. Bartleys Estate Agents and their employees and agents do not have any authority to give warranty or representation whatsoever in respect of this property. These details and all statements herein are provided without any responsibility on the part of Bartleys Estate Agents or the vendors. Equipment: Bartleys Estate Agents has not tested the equipment or central heating system mentioned in these particulars and the purchasers are advised to satisfy themselves as to the working order and condition. Measurements: Great care is taken when measuring, but measurements should not be relied upon for ordering carpets, equipment, etc. The Laws of copyright protect this material. The Owner of the copyright is Bartleys Estate Agents. This property sheet forms part of our database, and is protected by the database right and copyright laws. No unauthorised copying or distribution without permission.