

## KINWARTON ROAD ALCESTER WARWICKSHIRE



A pretty mid terrace property located a short stroll away from the town centre high street, countryside walks and small shopping precinct. The accommodation comprises: Reception hallway, living room, dining room with patio doors, kitchen, two bedrooms and bathroom. Easy to maintain garden to rear and two allocated parking spaces.

**£225,000**

Burton House, High Street, Alcester, Warwickshire, B49 5AB.  
Tel: 01789 766771 E-mail: [alcester@sanders-sanders.co.uk](mailto:alcester@sanders-sanders.co.uk)

Web: [www.sanders-sanders.co.uk](http://www.sanders-sanders.co.uk)

## 2 Kinwarton Road, Alcester, Warwickshire, B49 6QT

**Hall 3.37m (11'1") x 1.90m (6'3")**

**Living Room 3.43m (11'3") x 3.37m (11'1")**



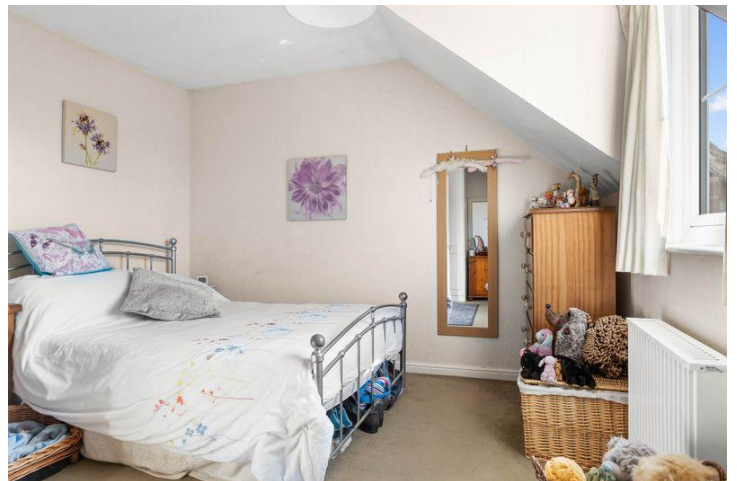
**Kitchen 3.03m (9'11") x 2.41m (7'11")**



**Dining Room 3.03m (9'11") x 2.91m (9'7")**



**Bedroom One 4.47m (14'8") x 3.35m (11')**





**Bedroom Two 3.44m (11'3") x 3.03m (9'11")**



**Bathroom 3.03m (9'11") x 1.89m (6'2")**



**Rear Garden**

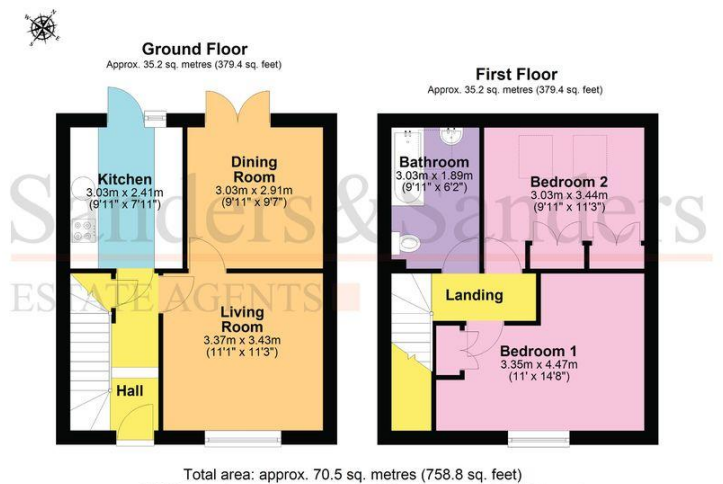


**Allocated Parking**

**There are two allocated parking spaces located a short distance away within the adjacent communal parking area.**

**Floor Plans & Property Details Disclaimer**

**These plans are for identification purposes only in relation to where one room is situated to another. They are not to be relied upon in any way for dimensions, scaling or sq. ft/metres. We will not be held responsible for any loss incurred, due to reliance on these measurements from the floor plans or measurements from the property details. You are advised to confirm all measurements.**



## **Fixtures & Fittings**

**Please note that the fixtures & fittings shown on the photographs, contained within these property details, do not form part of a fixtures & fittings list. Some items may/may not be included. You are advised to clarify what items are included before entering into any negotiations.**