

BRYAN MEWS BIDFORD-ON-AVON ALCESTER



A nicely proportioned, purpose built first floor flat being offered with no upward chain and located a stone's throw away from the village centre, countryside walks, and most splendid riverside views. Set within a communal courtyard setting and having accommodation to include: Impressive communal archway entrance leading to the secure entrance communal lobby with stairs rising to the main entrance door. Reception hallway, generously sized lounge, re-fitted kitchen, two bedrooms and bathroom. Allocated parking space, visitor parking, and communal grounds. EPC – C.

£169,950

11 Bryan Mews, Bidford-on-Avon, Alcester, Warwickshire, B50 4BF

Main Entrance



Lounge



KITCHEN



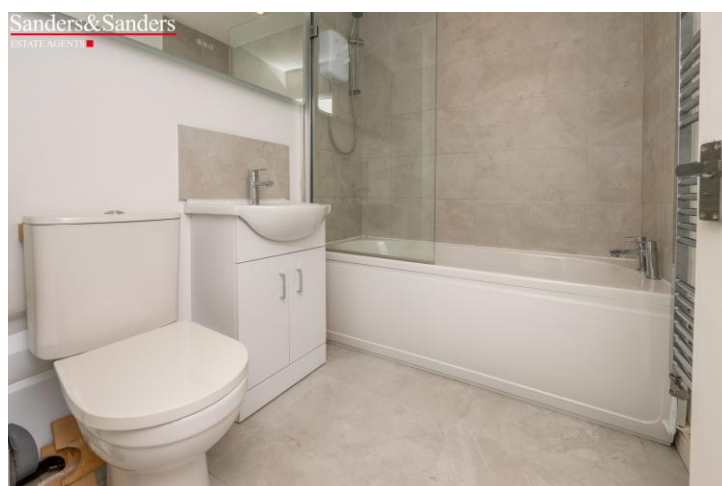


Bedroom Two

Bathroom



Bedroom One



Communal grounds



Tenure/Service Charge & Ground Rent

One hundred years on lease from and including 1 January 2023, 97 years remaining.

We are awaiting service charge and ground rent information.

Parking

1 x allocated space and visitor parking.

Floor Plans & Property Details Disclaimer

These floor plans are for identification purposes only in relation to where one room is situated to another. They are not to be relied upon in any way for dimensions, scaling, or sq. ft./metres. We will not be held responsible for any loss incurred, due to reliance on these measurements from the floor plans or measurements from the property details. You are advised to confirm all measurements.



Fixtures & Fittings

Please note that the fixtures & fittings shown on the photographs, contained within these property details, do not form part of a fixtures & fittings list. Some items may/may not be included. You are advised to clarify what items are included before entering into any negotiations.