



# **SQUASHWALES LTD**

## **League Constitution & Rules**

**Table of Contents**

	<b>PAGE</b>
<b>CONSTITUTION</b> .....	<b>3</b>
<b>League Structure</b> .....	<b>4</b>
<b>League Committee</b> .....	<b>4</b>
<b>League Panel</b> .....	<b>5</b>
<b>Dispute and Appeal Procedure</b> .....	<b>6</b>
<b>League Annual General Meeting</b> .....	<b>7</b>
<b>RULES</b> .....	<b>7</b>
<b>Eligibility</b> .....	<b>7</b>
<b>Welsh qualified players in Premier Leagues</b> .....	<b>8</b>
<b>Registration</b> .....	<b>10</b>
<b>Transferring Clubs once a Season has started</b> .....	<b>10</b>
<b>Representation</b> .....	<b>10</b>
<b>Premier Divisions</b> .....	<b>11</b>
<b>Feeder Divisions</b> .....	<b>12</b>
<b>Splitting Strength</b> .....	<b>12</b>
<b>Ineligible Players</b> .....	<b>12</b>
<b>Ranking Lists</b> .....	<b>12</b>
<b>Match &amp; Game Scoring System</b> .....	<b>14</b>
<b>Refereeing Matches &amp; Referee Bonus Points</b> .....	<b>15</b>
<b>Match Venues, Day of Play &amp; Start Times</b> .....	<b>15</b>
<b>Walkovers</b> .....	<b>16</b>
<b>Players Short in Team - Penalties</b> .....	<b>17</b>
<b>Submission of Results</b> .....	<b>18</b>
<b>Postponements</b> .....	<b>19</b>
<b>Miscellaneous</b> .....	<b>19</b>
<b>Disputes and Appeals</b> .....	<b>20</b>
<b>Appendices</b> .....	<b>21 to 25</b>

## **SQUASH WALES LTD SQUASH LEAGUE CONSTITUTION**

### **CONSTITUTION**

Squash Wales Ltd represents the whole of Wales, and its objective is to promote competitive squash in Wales.

The overriding purpose of the League Constitution & Rules is to keep our members playing, by providing a fair and equitable framework under which the Squash Wales Leagues operate, for all clubs, teams, and players.

It is advisable for all clubs to be familiar with the League Constitution & Rules. Clubs, teams, and players are reminded that, in addition to Rules to be complied with, there are provisions available which, among others, permit approaches to the League Manager, requests for review to the League Committee and appeals to the League Panel.

The League Manager, the League Committee and the League Panel will apply the League Constitution & Rules in a fair, practical, objective, and common-sense way to ensure a balance between all.

In applying the League Constitution & Rules, a key consideration will always be the original purpose of the Rule.

The main regions are as follows;

- North East Wales
- Eryri
- Pembroke
- West Central
- South Central
- East Central
- Premier Divisions

1. The League is represented in each Club by that Club's Club Lead; for contact details please refer to the League Master system at <https://walessquash.leaguemaster.co.uk>
- 1.1. The League Manager will be supported by a League Committee as detailed in Section 3 [three] below.
- 1.2. The Club Lead will be the main communication point between their club and all teams in that club, and Squash Wales. The responsibility of the Club Lead will be to communicate all information from Squash Wales to all teams in their club and feedback any information from their club to Squash Wales in a timely manner. All clubs must have a Club Lead.
- 1.3. The Leagues shall be known as the "Squash Wales League" hereinafter referred to as 'The Leagues'. The Leagues will be administered by the League Manager on behalf of Squash Wales League members, and Squash Wales who will always have overall jurisdiction on matters relating to The Leagues.

Active League structure can be found in the Squash Wales Rules Appendix One.

This constitution relates to all registered Squash Leagues in Wales which shall be run in accordance with the Articles of Association which can be found at [www.Squashwales.com/Governance/](http://www.Squashwales.com/Governance/)

Small differences and variations in individual arrangements within Regional Leagues outside of the Premier Divisions are noted in Appendix Three of Squash Wales League Rules.

## **2. League Structure**

- 2.1. The member clubs of The Leagues will be able to submit proposals and amendments for changes to the rules, and /or structure of The Leagues for prior discussion and then ratification at the League Annual General Meeting. All final decisions on changes are subject to approval by Squash Wales Ltd Board of Directors.
- 2.2. The League Manager, who shall be appointed by Squash Wales Limited, will be responsible for the Administration and day to day running of The Leagues.
- 2.3. The League Committee will consist of no more than 9 [nine] members and up to seven of which shall be elected at the League AGM. The League Committee will assist the League Manager in the running of the Leagues and review decisions emanating from the application of the League Rules.
- 2.4. A League Panel, consisting of 3 [three] persons and selected from the Board of Directors of Squash Wales Limited, and who are not connected to any club participating in the League, will be convened and assist the League Manager in respect of any disputes that arise from decisions made by the League Manager, Watchdog, League Committee, or by complaint from a person, club, or team.
- 2.5. Where time is of the essence in terms of the League Panel decision, the Squash Wales Limited Chair may exercise discretion and direct that the League Panel may be differently constituted in terms of time, numbers, and members.

## **3. League Committee**

- 3.1. In accordance with Squash Wales Articles of Association, a League Committee will be formed to assist the League Manager in the running of The Leagues.
- 3.2. The League Committee will comprise of the League Manager and a suitable Board Member together with a maximum of 7 [seven] other League Committee members.
- 3.3. The League Manager will chair the League Committee.
- 3.4. League Committee members may be nominated by any Squash Wales member club and will be elected at the League AGM. No club may have more than one representative on the League Committee.
- 3.5. At least 5 [five] members must be present at a general meeting of the League Committee for the meeting to be quorate.

- 3.6. Where a decision is made or a sanction imposed by the League Manager or Watchdog with which a player, team or club does not agree, it is open to the affected party to make representation to the League Committee.
- 3.7. For the purposes of the League Committee considering such representations, only 3 [three] League Committee members are needed to form a quorum.
- 3.8. Whilst the League Manager may be present, he or she will do so in an advisory role only and will not otherwise participate in the meeting.
- 3.9. Such meetings will be chaired by the Board Member and a majority decision will suffice.
- 3.10. One or more League Committee members including the Board Member will be excluded from involvement in voting under 3.9 above if there is a direct or indirect conflict involving the League Committee member's own club.
- 3.11. For the avoidance of doubt, the League Manager may not be involved in any initial sanction if there is a direct or indirect conflict involving his or her own club.
- 3.12. If following the League Committee's decision on review of a sanction remains unsatisfactory to a player, team or club, it is open to the affected party to appeal against the decision to the League Panel. Appeals to the League Panel must be submitted within 5 [five] days of the League Committee's decision.
- 3.13. Where no penalty is defined for a rule breach, the League Committee reserves the right to apportion a penalty that is proportionate to the breach in question. However, in the first instance of any such breach, warning will be given to the Club in question and Squash Wales will advise what penalty this breach would incur for subsequent infringements by that club.

Warnings will only be issued for rules where no penalty is already specified.

#### **4. League Panel**

- 4.1. A League Panel, consisting of 3 [three] independent persons and selected from the Board of Directors of Squash Wales Limited, and who are not connected to any club participating in the Leagues, will be convened to hear any appeals by teams, clubs or individual players arising from sanctions imposed by either the League Manager or Watchdog in the event that the team, club or individual does not accept the decision on the issue once reviewed by the League Committee.
- 4.2. For the purposes of the League Panel, a person will be regarded as being connected to a Club Participating in The Leagues [CPL] if:  
That person currently: [or did within the previous 5 [five] seasons]
  - a. Plays for a team from a CPL; or
  - b. Sits on the committee of a CPL; or
  - c. Sponsors a team or CPL.

## 5. Dispute and Appeal Procedure

- 5.1. All disputes and appeals must follow the correct procedure as outlined in this Constitution and all disputes MUST be in writing. In all instances 'e mail' will be accepted as 'in writing'.
- 5.2. Any complaint made by a person, club/team, in relation to an incident involving another person, club/team, must be reported to the League Manager in writing within 3 [three] days of the incident on which the dispute is based.
  - 5.2.1. The facts must be reported in full including reference to the rule[s] contravened with details of any witnesses provided.
  - 5.2.2. The League Manager will invite the person, club/team subject of the dispute to respond in writing, giving their version of the event concerned, and this must be with the League Manager within 3 [three] days of the invitation.
  - 5.2.3. The League Manager will make a ruling with due regard to the rule[s] involved, and both parties will be informed of the decision explaining the ruling within 5 [five] days. Both parties will also be made aware of the written version of the events submitted by the other.
  - 5.2.4. Any representations against the decision of The League Manager will be referred to the League Committee. The League Committee will receive copies of the original submissions of each party together with The League Manager's reasoning, with reference to the league rules applicable, for his/her decision within 3 [three] days.
  - 5.2.5. The League Committee will review the information received and inform the League Manager of their decision within 5 [five] days with The League Committee's reasoning and rules applicable. The League Manager will notify all relevant parties of the decision within 3 [three] days of the League Committee's decision being received.
  - 5.2.6. An appeal against the decision of the League Committee may be appealed to the League Panel as detailed in section 3.12 above. The League Panel will receive copies of the original submissions of each party together with The League Committee's reasoning, with reference to the league rules applicable, for their decision within 3 [three] days.
  - 5.2.7. Any appeal to the League Panel will need to be accompanied by a payment of £25 to cover administration costs. This payment will be retained by Squash Wales Ltd if the appeal is unsuccessful and returned to the claimant if the appeal is upheld.
  - 5.2.8. The League Panel will review the information received and inform the League Manager of their decision within 5 [five] days. The League Manager will notify all relevant parties of the decision within 3 [three] days of the League Panel's decision being received.
  - 5.2.9. Where an appeal is successful, the League Manager will be directed to implement the League Panel decision.
  - 5.2.10. Where an appeal is unsuccessful, the League Panel will uphold the original decision and will have the discretion to increase the original sanction, but any such increased sanction must be proportionate to the issue under consideration.

5.2.11. The decision of the League Panel will be final, and no further appeal allowed. No further correspondence will be entered into or considered.

## **6. LEAGUE ANNUAL GENERAL MEETING**

6.1. The League Annual General Meeting will normally be held each year after the completion of the Spring season. The date of the League Annual General Meeting will normally be in June, the details of which will be circulated by the League Manager, together with an Agenda and details of any items listed for discussion 21 [twenty-one] days before the meeting.

Timings for submissions are as per the Squash Wales Ltd Articles of Association. In exceptional circumstances, these timings may be changed.

The League Annual General Meeting will be chaired by an independent member of the Board in an open and impartial way.

6.2. Attendance at the League Annual General Meeting is compulsory for any club who will have a team, or teams, competing in The Leagues for the forthcoming season. A club must have 1 [one] representative present. A person may only represent 1 [one] club at the League Annual General Meeting.

6.3. All clubs attending the League Annual General Meeting will have 5 [five] points added to each of their teams' totals at the start of the Winter Season of that year.

6.4. On matters requiring a vote a club will be entitled to 1 [one] vote irrespective of how many teams they will have competing in The League in the forthcoming season. No voting by proxy will be allowed.

6.5. Motions received in writing via letter or email to Squash Wales Limited will be included in the agenda. Motions must be received no later than 14 [fourteen] days prior to the meeting. Additional motions will be accepted at the League Annual General Meeting at the discretion of the Board member chairing the meeting.

## **RULES**

These rules apply to all areas within Wales.

### **1. ELIGIBILITY**

1.1. All club ranked players allocated to a league team at the start of the season, must have a level of Squash Wales membership that allows participation in league matches i.e. one of the following: -

- Team player [Junior]
- Team Player [Adult]
- Referee
- Coach

This status is called a “Team Player” in these rules, and this level of membership is required before a player can be allocated a position on a nomination list in League Master and play their first match.

Team Player membership must be in place to play in any matches during a season.

- 1.1.2. For new players joining once the season has started, they must join Squash Wales as a Team Player and be entered into League Master at an appropriate ranked position for the club prior to playing their first match.
- 1.1.3. A Team playing an individual who is not a Team Player in accordance with rule 1.1 or 1.1.2 above will be considered as using an ineligible player. Penalties for using ineligible players are detailed in Rule 6 [six].

## **2. WELSH QUALIFIED PLAYERS IN PREMIER LEAGUES**

- 2.1. Welsh qualified player rules only apply to Premier Divisions.
- 2.2. Any player who is eligible to represent Wales or has represented Wales at Junior, Senior or Masters level will be regarded as a Welsh qualified player.
- 2.3.1. All other players, Junior, Senior or Masters level, will not be deemed Welsh qualified players.
- 2.3.2. For the purposes of this rule a player will be regarded as “Welsh qualified” if that player is currently studying full time for a qualification at or beyond NQF Level 4<sup>[1]</sup> at a Welsh Higher or Further educational establishment on a minimum 12-month course and is residing in Wales during term time.
- 2.3.3. For the purposes of this rule a player will be regarded as “Welsh qualified” if the player has attended an educational course as defined in 2.3.2, resided in Wales during term time for the duration of the course and has continued to reside in Wales after completion of the course, in accordance with 2.3.6 below.
- 2.3.3.a. A player who is considered Welsh qualified for the purpose of playing Welsh Premier League squash in accordance with 2.3.3 above will continue to be eligible to play for 12 months after the date of completion of the course. Following the expiry of that 12-month period, such player will have to rely upon the other available rules to obtain Welsh qualified status entitling the player to play.
- 2.3.3.b. A player may be considered Welsh qualified for the purpose of playing Welsh Premier League squash by residing in Wales for a period of 3 months or longer.
- 2.3.4. For the avoidance of doubt, Rules 2.3.2, 2.3.3, 2.3.3a and 2.3.3b, relate only to eligibility to play Premier League squash and do not impact on eligibility for national selection where WSF and ESF regulations will continue to apply.
- 2.3.5. The evidence required to satisfy 2.3.2 will be a letter from the course tutor at the educational establishment at which the player is studying confirming the player’s name, his or her term-time address, the course being studied and its duration.

---

<https://www.gov.uk/what-different-qualification-levels-mean/list-of-qualification-levels>

- 2.3.6. The evidence required to satisfy 2.3.3, 2.3.3.a and 2.3.3b will be a letter as in 2.3.5 above confirming those details plus a copy of a post-study tenancy agreement or utility bill confirming present address or such other evidence as Squash Wales may in its absolute discretion deem appropriate.
- 2.3.7. Students residing in Wales who are in full-time higher or further education at a Welsh educational establishment on a course lasting a minimum of 12 months duration are exempt from this Rule when playing for their educational establishment in the Premier League.
- 2.4. A Premier Division One or Two club will be allowed to register two 'Non-Welsh qualified players to play in any of their teams. Non-Welsh qualified players are not allowed to "play up" into a higher team.
- 2.5. If a Premier club/team wishes to apply for a Non-Welsh qualified player to be an exemption to this rule, an application in writing must be submitted to the League Manager, together with the ranking list. The application must include any reason[s] why the player should be made exempt, with supporting evidence. The League Manager will present the exemption to the League Committee which will consider each application on merit.
- 2.6. If there is any doubt as to the eligibility of a player under this rule, clarification must be obtained from the League Committee.
- 2.7. Any club/team using a Non-Welsh qualified player without first having notified the League Manager or applied for the Non-Welsh qualified player to be made exempt from this rule, will be regarded as using an ineligible player and subject to the penalty outlined in Rule 6 [six].
- 2.8. A team will be allowed to use up to 2 [two] Non-Welsh qualified players in any match.
- 2.9. Non-Welsh qualified players will be required to play a minimum of 50% of matches during a season. If a Non-Welsh qualified player fails to fulfil the required quota of matches, all points earned by that Non-Welsh qualified player will be deducted from the team's total league points. If the rubber played by that Non-Welsh qualified player was relevant in deciding the outcome of the match [i.e. the match was won 3-2 and the Non-Welsh qualified player was one of the players to win his/her rubber] then the offending team will also lose the 4 [four] points awarded for winning the match. The bonus points will not be awarded to the other team. For Non-Welsh qualified players joining once the season has started, they must play a minimum 50% of the remaining matches in that season or Rule 6 [six] will be applied. Rule 5.9 will also be used regarding the last 3 [three] games of the season.
- 2.10. If a Non-Welsh qualified player fails to fulfil his/her quota of matches due to illness/injury, or for any other reason, which must be proven by production of written medical, or other evidence, the League Committee may allow that quota to be reduced. Any application to have the quota reduced must be made in writing.

### **3. REGISTRATION**

3.1. All teams wishing to participate in any of The Leagues for the forthcoming season will be required to inform the League Manager, in writing, of the following information. This must be no later than the dates circulated by the League Manager.

It is the Club Lead's responsibility to keep this information up to date in League Master. If and when the information changes [e.g. when a team captain changes], League Master should be updated, and the League Manager informed by email.

3.1.1. Name of Club

3.1.2. Name and contact detail of the Club Lead

3.1.3 Name and contact detail of Team Contact and Reserve Contact

3.1.4. Name of team e.g. A team, B team etc.

3.1.5. Match venue including address, phone number and postcode

3.1.6. Night for home matches together with match start time

3.1.7 Team ranking lists

### **4. TRANSFERING CLUBS ONCE A SEASON HAS STARTED**

4.1. Players will be allowed to transfer clubs if both clubs agree. This must be confirmed by e-mail by both clubs.

4.2. If there is no agreement between clubs, permission must be gained from the League Committee before playing for a new club. The request for transfer must be made by email to the League Manager outlining full reasons for the transfer request.

4.3. The League Manager will confirm to all relevant parties the decision of the League Committee under 4.2 regarding any request to transfer.

4.4. Where a team withdraws from The Leagues the players from that team will be allowed to apply for transfer to another club/team. If more than 60% of the matches in the season have been completed, then no transfer will be allowed.

4.5. Any player allowed to transfer to another club, after permission has been granted, will still be subject to the conditions outlined in Rule 5 [five] when playing for the new club.

### **5. REPRESENTATION**

5.1. Unless following a transfer allowed under Rule 4 [four], a player may only represent 1 [one] club in The Leagues within any one region during a season.

5.2. A player will be allowed to play for more than one team in The Leagues, provided the teams are not from the same club or same region, unless the player is ranked in any Premier team. Premier ranked player will only be allowed to play in another team if that team plays in a non-feeder league i.e. Pembrokeshire, Eryri or North East Wales

- 5.3. Players ranked in a lower team will be allowed to play for a higher ranked team in the same club. When a player has played above their ranked team[s] on 6 [six] occasions he/she will no longer be eligible to play for the lower ranked team.

Where a player is called up to a higher team, but the fixture/string does not get played [opposition team short of players as an example and string is awarded as a walkover] this "play up" will not be included as one of the six occasions.

- 5.4a Players ranked in a higher ranked team will not be allowed to play for a lower ranked team within that club. [Unless otherwise stated it will be accepted that a club 'A' team is higher than a club 'B' etc].
- 5.4b Teams must play in merit order within the leagues i.e. the B team in a club cannot play in a lower league than the C team, and players in the higher team must be ranked higher than players in the lower team (unless Rule 7.10 is used).
- 5.5. Divisions will be regionalised into their respective region and consist of teams as needs require. When the occasion demands, and due to a potential regional imbalance of teams relegated from Premier Division Two, then some Divisions may have more or fewer teams than the previous season.
- 5.6. All Divisions will operate 2 [two] separate seasons in each calendar year. One season will be known as Winter and commence in September each year, and the other season will be known as Spring and commence in January each year.
- 5.7.1. In exceptional circumstances, the process listed above may be suspended by the League Committee and an alternative process used where the situation demands. Such process to be ratified by the League Panel.
- 5.7.2. All other teams will be promoted and relegated in accordance with Appendix 2.

### **PREMIER DIVISIONS**

- 5.9. Other than in exceptional circumstances, as defined and agreed by the League Committee, any player who plays in a team in the Premier Divisions and is ranked in the top 5 players in that team i.e. ranked 1, 2, 3, 4 or 5 MUST play a minimum of 4 [four] matches for that team, or a higher team in the club, before the last three matches of that season for that team. If a player fails to fulfil the required quota of matches, i.e. playing 4 [four] matches, then all points gained by that player will be deducted from the team's total League points. If the rubber played by that player was relevant in deciding the outcome of the match i.e. the match was won 3-2 and the player in question was one of the players to win his/her rubber, then the offending team will also lose the 4 [four] bonus points awarded for winning the match. The bonus points will not however be awarded to the other team.
- 5.10. Players brought up from lower teams, or ranked 6[six] or below within a team, to cover illness/non availability of players in Premiership teams must have had Team Player membership and been registered on a ranking list in League Master for that club prior to the start of Period Two to be eligible to play in any of the last 3 [three] matches of the season.

- 5.10.1. If a player fails to fulfil his/her quota of matches due to injury/illness, or exceptional circumstances, which must be proved by production of written medical, or other, evidence before the player plays in any of the last three matches of the season, the League Committee may allow that commitment to be reduced. Any application to reduce the quota of matches must be in writing.

### **FEEDER DIVISIONS [South Central 1, West Central 1 & East Central 1]**

- 5.11. Players ranked in teams below Premiership leagues must have been ranked in that team prior to the end of period 1 (one) to be eligible to play in any of the last 3 (three) games of the season
- 5.12. Players who are ineligible to play in the last three (3) games of the season are also ineligible to play in any post season play offs such as Annual Championship, Premiership end of season playoffs, or any other play offs to determine promotions/relegations

### **SPLITTING STRENGTH**

- 5.13. Split strength teams will not be allowed. All clubs will be required to provide a full club ranking list and indicate which players are playing in which team for that season.

## **6. INELIGIBLE PLAYERS**

- 6.1. A team which plays an ineligible player will forfeit the relevant rubbers, e.g. if player 3 is ineligible, the offending team will lose rubbers 3, 4 and 5 as 3-0 walkovers.

If both teams play an ineligible player each team will score no points for their relevant rubbers.

A team will need to win 3 eligible rubbers to receive the winning bonus otherwise, no winning bonus is awarded.

## **7. RANKING LISTS**

- 7.1.a. Club ranking lists need to reflect Squash Levels scores for club players. At the start of the season a player may be ranked lower than his squash levels score, but by no more than 20% difference, e.g. a player with a Squash Level of 3000 or above, may not be ranked lower than a player with squash levels of 2500 or below.

Any player with a Squash Levels of 1000 or under will not be subject to this 20% tolerance but it is recommended they play in order of their squash level score within the club rankings.

A player with a Squash Level must allow it to be visible in Squash Levels if they are to be ranked in a team in League Master.

- 7.1.b. All clubs participating in The Leagues for the forthcoming season will be required to submit a ranking list of players, who it is intended will represent any team in that club during the season, in ranking order. Once a player is allocated to a team that player may under no circumstances play for a lower team.
- 7.2. A minimum of 5 [five] players must be registered in any team.
- 7.3. Players who are not included on a ranking list, including injured players and players who have been removed from ranking lists are not eligible to play for a club/team until joining Squash Wales as a Team Player, and notification given to the League Manager in writing, which must include their ranking position within the club/team. Notification should be given to the League Manager within 24 hours of the player playing their first game in the season in The Leagues.
- 7.4. In any dispute about the merit order of players in a team the League Committee will adjudicate.
- 7.5. Any player listed in the top 5 [five] places of any team in Premier or Feeder One leagues who does not play in at least one of the first 4 [four] matches of the season, will be removed from League Master ranking lists. All players in teams below the removed player will move up one place to maintain at least 5 players per team.
- A removed player can be re inserted into the ranks at the same rank position on playing his/her first match. The League Manager must be informed as soon as this first match is played so League Master can be updated for timely entry of results.
- A removed player returning late in the season will be subject to rule 5 regarding quota of matches played.
- 7.6.1. A player joining a 2<sup>nd</sup> club part way through a season and listed in the top 5 [five] places of any team must play at least once in the next 4 available fixtures for the team in which they are ranked or be removed from rankings until they play a match for the team in which they are ranked.
- 7.6.2. Players joining a 2<sup>nd</sup> club part way through the season and listed in the top 5 [five] places of any team must play at least once for the team in which they are ranked before being allowed to play up into a higher team within the 2<sup>nd</sup> club.
- 7.7. Once the season has started, a team may not change their ranking order until the end of Period 1 [one]
- 7.8. Any request for a change of rankings outside of rule 7.7 will need to be submitted in writing with rationale to the League Manager for consideration by the League Committee. A response will be provided within 5 [five] days.
- 7.9. A team which breaks ranking rules and plays players "out of turn" will forfeit the relevant rubbers e.g. if players 3 and 4 play out of ranked order only rubbers one, two and five will be scored and the offending team will lose rubbers 3 and 4 as 3-0 walkovers.
- 7.10. If a team wishes to register a player out of ranking order, i.e. playing in a team below their actual ranking ability, and outside of the 20% difference in Squash Levels, then that player must be identified to the League Manager with full details of why the request is being made

The League Committee will review all requests for out of order playing, and permission will only be given where competitive squash is not compromised and is truly an exceptional circumstance.

Players returning from injury should be fully fit to play and be ranked at an appropriate level within the club based on Squash Levels/variance rule (7.1.a)

Any player who is allowed to play in a lower team will not be allowed to play up for a higher team

- 7.11. When there is a match between two teams from the same club then the players playing for the higher ranked team in each individual rubber must be the higher ranked player in the club rankings for that rubber.

## **8. MATCH & GAME SCORING SYSTEM**

- 8.1. All matches will consist of 5 [five] rubbers. Each rubber will be the best of 5 [five] games.
- 8.2. In the Premier Divisions, each game will use the point-a-rally scoring system to 11 [eleven] points and where a game reaches 10 [ten] points each a player will be required to win that game by 2 [two] clear points i.e. 14 – [fourteen] 12 [twelve]; 15 [fifteen] -13 [thirteen] etc. In non - Premier Divisions each game will use the point-a-rally scoring system to 15 [fifteen] points and where a game reaches 14 [fourteen] points each the player receiving serve will have the option to play to 15 [fifteen] points or 17 [seventeen] points i.e., 1 or 3.
- 8.3. Each game will be scored as 1 [one] point for the team's league points total and the team winning most rubbers will be awarded 4 [four] bonus points.
- 8.4. At the end of the season the overall winner of the leagues will be the team with the most league points as shown on the League Table in League Master [shown as "Total"].
- 8.5. Where two or more teams have the same total league points the following criteria, in order, will be applied until a differential is seen between the teams to identify a winner:
- Number of matches won [shown as "W"]
  - Number of games won [shown as "F"]
  - Number of games lost [shown as "A" i.e. "games against" - fewest games against will be the winner]
  - Number of individual points lost by the team – team with the fewest points lost will be the winner.
- 8.6. If two or more teams have lost the same number of individual points, they will be deemed to have finished tied for the same position in the League table. Where promotion or relegation is affected, a play-off between the two teams will determine the winner. Play off to be at a neutral venue and completed as soon after the end of the season as possible.

- 8.7. If a team withdraws from The Leagues before the end of a season, all points gained by other teams, including bonus points and /or referee points where applicable, against that team will be removed from the League Master system and not affect the league positions of remaining teams.

## **9. REFEREEING MATCHES & REFEREE BONUS POINTS**

- 9.1 In all Division[s] both teams should be allowed to mark/referee rubbers and gain the appropriate bonus points. It will be necessary for each team who wishes to gain bonus points to ensure they have an appropriately qualified person present to fulfil this responsibility. Referees/markers for each string should be agreed on the night between both team captains.

- 9.2. In all Divisions a single bonus point is available to the home and away teams for the presence of a qualified referee[s], in each team, provided that the referee[s] is/are registered for the current season with Squash Wales.

- 9.3. To gain a marker bonus point, the fixture must have at least 2 complete rubbers refereed by one or more qualified referee[s]. However, where the qualified referee is also a player on that night, he/she will only need to mark at least 1 [one] complete rubber to gain the referee point.

Only one referee bonus point is available for any one team per match.

- 9.4. No point will be awarded for any referee who is not registered as a referee with Squash Wales Limited for the current season. Points will not be awarded retrospectively.
- 9.5. Any referee who has gained his/her qualification with a governing body other than Squash Wales, must register with Squash Wales for the current season, to be eligible as a referee for the purposes of this rule.
- 9.6. Teams claiming a referee bonus point will be required to select the ref[s] name[s] via the drop-down box section on the result entry in League Master to show which string[s] was/were marked.
- 9.7. The Author field will require the name of the individual who entered the results to be added in all cases.

## **10. MATCH VENUES, DAY OF PLAY & START TIMES**

- 10.1. All matches will be played on the following nights:

Premier Division One THURSDAY

Premier Division Two MONDAY through to THURSDAY

All other Divisions, MONDAY through to FRIDAY.

- 10.2. Matches may start no earlier than 6:30pm and no later than 7.30pm. Any other start times outside this range will need to be agreed by both team captains.
- 10.3. Where circumstances demand that a match starts earlier than 6:30pm, or later than 7.30pm, the HOME team will be responsible for ensuring the away team are fully aware of, and agree with, the start time. Failure of both teams to agree an alternative start time will be referred to the League Manager to decide the start time of the match.
- 10.4. Whenever possible, 2 [two] courts should be available for the designated match start time.
- 10.5. In exceptional circumstances where a club has only 1 [one] court available for a match, the match must start no later than 6.30pm and the HOME team will be responsible for ensuring the away team are fully aware of, and agree with, the start time.
- 10.6. It is the responsibility of the HOME team to ensure enough court time is available for all rubbers to be completed if the match is started on time. As a rough guide an average of 40 minutes is allowed for matches when tournaments are scheduled.
- 10.7. All players should be present at the start of the match when the team captains declare their teams and record them on the match result card. A team may arrange for the late arrival, by no more than 1 [one] hour after the designated match start time, of 1 [one] player if this has been agreed by both team captains prior to the day/date of the match.
- 10.8. Where rubbers fail to be completed or start times are substantially delayed due to a player or players not being present at the start of a match this should be reported, in writing to the League Manager. The League Committee will take this into consideration if a decision on a match outcome is required.
- 10.9. Unless agreed by both captains prior to the start of a match if any player[s] fails to arrive at the match venue within 1 [one] hour of the designated start time of the match they will be considered as failing to arrive and the rubber[s], and all rubbers below those strings, will be awarded to the opposing team 3-0 irrespective of whether those rubbers have already been played and completed.
- 10.10. Any individual rubber must be completed on the court on which it started unless that court becomes unfit for play or both players agree to switch to another court. If an individual rubber cannot be completed on the same court on which it started due to lack of court time, the HOME team will concede that rubber with the game scores at the time the match stops being taken into consideration. Therefore, if the home team was leading the relevant rubber 2-0 when the match was forced to stop, they would forfeit the rubber 2-3. If this is due to the late arrival of the away team, the full facts must be reported, in writing, to the League Manager. The League Committee will then decide the outcome of the unfinished rubber.
- 10.11. Failure by a HOME team to make courts available for a match on the day/date as published in the official fixtures will result in a walkover being awarded against the home team, if said failure is considered the fault of the home team.

- 10.12. All rubbers of a match should be played at the published match venue. In exceptional circumstances [e.g. court flooded/Covid restrictions] a mutually agreeable alternative venue/date can be used. The League Manager must be kept informed and authorise any alternatives arranged.

## **11. WALKOVERS**

- 11.1. Only the League Manager or League Committee can award a walkover match.
- 11.2. If any team has a walkover awarded against them for failing to fulfil a fixture, they will concede the match 0-19. If the non-offending team has a registered referee ranked in the team and playing at the fixture the referee point will be awarded and the non-offending team will be awarded the match 0-20.

Where both teams are from the same club no points are awarded to either team.

Any strings that are walkovers where both teams are from the same club will have no points awarded to either team for those strings.

- 11.3. In Premier Divisions only, if a team has one or more walkovers awarded against them for failing to fulfil a fixture the following will apply
- First walkover will result in rule 11.2 being applied and 10 [ten] further points being deducted from the team.
  - Second walkover will result in the team being withdrawn from the League, with all previous results null and void, and an automatic relegation for the following season.
- 11.4. Any team wishing to claim a walkover, for whatever reason, must submit their claim, in writing, to the League Manager within 3 [three] days of the match date. The claim must include in full the reasons for claiming a walkover and include the name[s] of those players who would have played in the match for the non-offending team. The League Manager or League Committee will deal with the claim in accordance with the disputes/appeals procedure.
- 11.5. If a team is automatically relegated during 2 [two] consecutive seasons, the team, will be liable to disqualification from The League, for a period to be decided by the League Committee.

## **12. PLAYERS SHORT IN TEAM – PENALTIES**

- 12.1. In Premier Divisions One and Two, if a team, for whatever reason, attends a match with only 4 [four] players, they will concede the uncontested rubber 0-3. The uncontested rubber will be rubber 5 [five]. An additional 2 points will be also deducted.

In Feeder league teams and below including Eryri, North East Wales and Pembrokeshire leagues uncontested rubbers will be conceded 0-3 but no additional penalties will be applied for teams short of players in a fixture.

- 12.2. In Premier Divisions One and Two, if a team, for whatever reason, attends a match with only 3 [three] players, they will concede the uncontested rubbers 0-3. The uncontested rubbers will be rubbers 4 [four] and 5 [five]. An additional 4 points will also be deducted.

In Feeder league teams and below including Eryri, North East Wales and Pembrokeshire leagues uncontested rubbers will be conceded 0-3 but no additional penalties will be applied for teams short of players in a fixture.

### **13. SUBMISSION OF RESULTS**

- 13.1. All results must be submitted via the League Master on-line results service within 2 [two] days of the date of the match unless agreed otherwise with the League Manager. Failure to record any result within 2 [two] days of the match date will result in 5 [five] points being deducted from the home teams league total. Within 2 [two] days means by midnight on the second day after the match date.

- 13.1.1. Away teams are alerted by Watchdog when results are entered into League Master and given 24 hours to verify the result data are complete and accurate. During this period the results are in a "Verifiable" stage in League Master and become "Deemed Complete" at the end of the 24-hour period.

Errors or omissions must be flagged by email to the League Manager within this 24-hour verifiable period. Any errors or omissions identified after this period will not be amended unless a Request to Review (RtR) form is submitted to the League Manager and subsequent approval by the League Committee is granted.

- 13.2. The results card is an important document and is the definitive record of the fixture. The result card provided by the home team must be available prior to the start of a match for captains of both teams to record their team players.
- 13.3. It is the responsibility of BOTH teams to ensure a result card, is completed and the information is fully recorded. BOTH captains are required to sign the completed result card to indicate that all the recorded information is correct. It is strongly recommended that each captain take a photograph of the completed score card and retain until the results are completed in League Master.
- If a captain does not sign the card and there is a dispute on the fixture or results by that captain, the dispute may not be upheld.
- 13.4. Details of rubbers marked/refereed by qualified and registered referee[s], must be recorded in the appropriate section of the result card to show which strings were marked by each marker/ referee for the purposes of claiming a referee bonus point.
- 13.5. If either captain is not satisfied that the information recorded on the card is correct, they should refuse to sign the card and report the facts by email with a photograph of the card to the League Manager for it to be dealt with in accordance with the procedure for disputes and appeals.

- 13.6. The result card must be retained by the home team and will be required to be submitted to the League Manager in the event of any dispute/appeal. A photograph of the result card will be considered acceptable.
- 13.7. The League Manager may request the result card for any match to be submitted immediately. Failure to submit the card/photo of the card to the league manager within 3 [three] days of the request will result in 3 [three] points being deducted from the home team's league total.
- 13.8. When any conduct procedures, or any other issues, having been taken against any player or occurred during the match, this must be recorded on the result card/back of the card and recorded in the notes section when submitting the result in League Master.

#### **14. POSTPONEMENTS**

- 14.1. Any requests for matches to be postponed will be refused other than in exceptional circumstances. Any request to postpone a match for exceptional circumstances must be made in writing to the League Manager. The League Committee will decide on the merit of any request if required to do so and the League Manager will respond accordingly.
- 14.2. Should a postponement be allowed, the match must be re-scheduled to be played prior to the final 2 [two] weeks of the season. If the postponement is within the last two weeks of the season, the League Manager will decide a date for the match after consultation with both team captains
- 14.3. Where extreme weather conditions such as snow exist, a match may be postponed for reasons of safety of players travelling to or from a match and the League Manager informed.
- 14.4. It is accepted that student teams may need to re-schedule matches which fall outside their semester dates. The League Manager will be responsible for re-scheduling such matches, and the alternative dates will be published in the fixture schedule. These dates will be binding. It will mean that on occasions teams may need to play more than 1 [one] match in a week.
- 14.5. If it is necessary to move the date of a match due to exceptional circumstances, the home team will provide three alternative weekday dates to the away team for the rescheduled match to be played. The League Manager will determine the timeframe in which the rescheduled match needs to be played. If the away team refuse all these dates, the match will be awarded as a walkover.

#### **15. MISCELLANEOUS**

- 15.1. Players shall conduct themselves at all times in a manner keeping with the spirit of Squash and true competition i.e. that by their actions they will use their best efforts to compete in a proper manner to defeat their opponent and always behave in a manner which is not abusive or detrimental to the game. If a dispute arises from such behaviour the full facts must be reported to the League Manager who will refer the matter to be dealt with under the discipline procedures of Squash Wales Limited.

If a player is deemed to have contravened this rule, they will lose the relevant rubber 0-3 and all rubbers of players below the offending player in that team will also be forfeited 0-3. The player may also be liable to a ban from The Leagues' matches for a period to be determined.

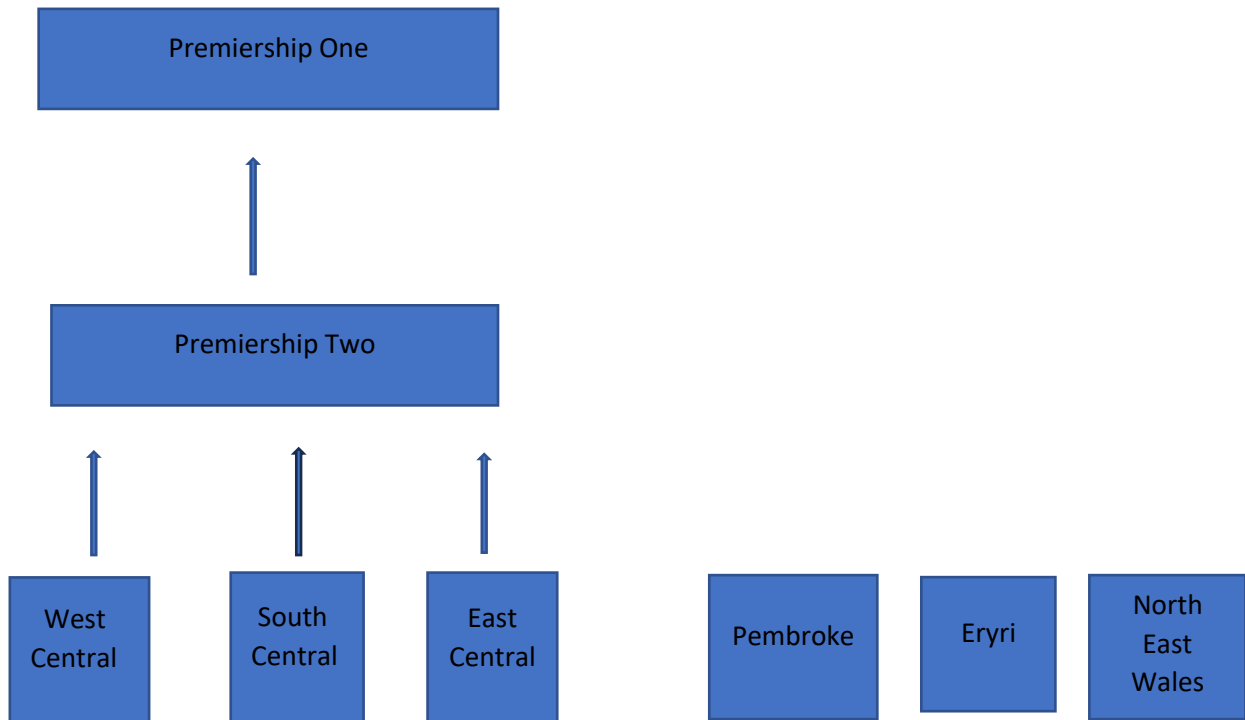
- 15.2. Order of play for any match will be string 5 [five] through to string 1 [one] unless otherwise agreed by BOTH captains.
- 15.3. All teams will play 1 [one] home match and 1 [one] away match, during a season, with each of the other teams in the same division.
- 15.4. Refreshments are to be provided for visiting players but there are no requirements to cater for spectators. If a visiting team do not intend to remain for refreshments after a match, they should notify the home team in advance of the match date. Where it is feasible 48 hours' notice should be given. Where exceptional circumstances make providing of refreshments impracticable the home team must alert the visiting team in advance. Where a team is unable to provide refreshments post -match they should not expect to receive refreshments when visiting other clubs.
- 15.5. The DUNLOP black double yellow dot squash ball is the recommended ball for League matches. Alternative dot balls may be used if court conditions dictate provided both captains agree. If there is no agreement a double yellow dot ball should be used.

## **16. DISPUTES AND APPEALS**

- 16.1. Dispute and appeal procedures are detailed in the Constitution section 5.
- 16.2. For the purposes of any rule involving the League Committee making a decision after considering representations from an affected player, team or club following the making of a decision by the League Manager or the imposition of a sanction by the League Manager or Watchdog, all appeals against the League Committee will be considered by the League Panel whose decision will be final.
- 16.3. Where there is found to be any inconsistency between the League Constitution and the League Rules in the context of disputes and appeals, the Constitution will prevail.

- APPENDICES

APPENDIX 1 League Structure by Divisions



West Central, South Central, and East Central will be feeder Divisions into the Premiership Two Division with one team from each feeder division being eligible to be promoted at the end of each season.

Pembroke, Eryri, and North-East Wales are stand-alone Divisions and do not have access to the Premiership.

## APPENDIX 2: Promotions & Relegations for Premier and Feeder Divisions [West Feeder, and East Feeder]

### Promotion/ Relegation between Premiership One and Premiership Two

Relegation from Premiership One to Premiership Two will occur at the end of the Winter and Spring Seasons.

Bottom two teams in Premiership One will be relegated to Premiership Two and top two teams in Premiership Two will be promoted to Premiership One.

At the end of the Spring Season the winning Premier One teams of Winter and Spring seasons will do a play off to determine the overall Annual Premier Champion, unless the same team wins both Winter and Spring Seasons in which case that team will be deemed the Annual Premier Champion

### Promotion/Relegation between Feeder Leagues and Premier Two

The three lowest teams in Premiership Two at the end of the Spring season will be relegated into their respective Feeder Divisions provided

- There are 3 Feeder division teams eligible for promotion
- No Premier team has withdrawn from the Premiership

Should this not be the case then only two [or fewer] teams will be relegated from Premiership Two to maintain the eight-team structure in Premier One and Premier Two

### Promotion into Premiership Two

At the end of the Winter and Spring seasons the winner of each Feeder Division will be eligible to be promoted to Premiership Two

### Impact of Relegations from Premiership Two on Feeder and lower leagues at the end of Winter and Spring seasons

Relegations from Premiership Two will determine the subsequent promotions and relegations within the Feeder Divisions. There are several scenarios regarding promotion/relegation within a feeder division which are shown below.

<b>Premiership movement</b>	<b>Resulting movement of teams in Feeder and Lower Divisions</b>
Feeder receives no Premiership team	1 team promoted into Premiership No team received from Premiership 2 teams promoted to Division One from Division Two 1 team relegated to Division Two All lower divisions work on "2 teams up 1 team down" system
Feeder receives one Premiership relegation team	1 team promoted into Premiership 1 team received from Premiership 2 teams promoted from Division 2 to Division One 2 teams relegated from Division One to Division Two All lower divisions work on "2 teams up 2 teams down" system
Feeder receives two Premiership relegation teams	1 team promoted into Premiership 2 teams received from Premiership 1 team from Division Two to Division One 2 teams relegated from Division One to Division Two All lower divisions work on "1 team up 2 teams down" system
Feeder receives three Premiership relegation teams	1 team promoted into Premiership 3 teams received from Premiership 1 team promoted from Division Two into Division One 3 teams relegated from Division One to Division Two All lower teams work on "1 team up 3 teams down" system

Final decisions on promotions and relegations will be made by the League Committee with subsequent ratification by the Board.

Promotion and relegation for non-feeder divisions - Eryri, North-East Wales and Pembrokeshire – can be found in Appendix Three "Regional Differences".

### APPENDIX 3 .... Regional Differences and Promotions/Relegations in non - feeder Divisions

#### **Pembroke Division**

At the end of each season the Winner of Pembroke One will be deemed Champions for that season. Bottom team of Pembroke One will be relegated to Pembroke Two and the top team of Pembroke Two will be promoted to Pembroke One.

If Winter Champion and Spring Champion of Pembroke One are different the two teams will play off to decide the Annual Champion. This play off will be in the first week after the Spring season has ended.

If the same team wins Winter and Spring seasons in Pembroke One that team is deemed overall Annual Pembroke Champion.

#### **North-East Wales Division [NEW]**

North East Wales Division will run as a recreational league only.

The only rules which will be applied will be regarding eligibility, ranking lists and results entry into League Master. No penalties will be applied for breaching any other rules

- 1.1. All club ranked players must have a level of Squash Wales membership that allows participation in league matches i.e. one of the following: -
  - Team player [Junior],
  - Team Player [Adult],
  - Referee,
  - Coach
- 1.1.2. For new players joining once the season has started, they must join Squash Wales as a Team Player and be entered into League Master at an appropriate ranked position for the club prior to playing their first match.

- 1.1.3. A Team playing an individual who is not a Team Player in accordance with rule 1.1 or 1.1.2 above will be considered as using an ineligible player. Penalties for using ineligible players is detailed in Rule 6 [six]
- 1.2. All results from matches must be entered into League Master
- 1.3. All clubs participating in The Leagues for the forthcoming season will be required to submit a ranking list of players, who it is intended will represent any team in that club during the season, in ranking order.
- 1.4. If Winter Champion and Spring Champion of North East Wales are different the two teams will play off to decide the Annual Champion. This play off will be in the first week after the Spring season has ended.

## **Eryri**

- 1.1. The winner of Eryri Two in each Winter and Spring season will be offered a promotion to Eryri One for the following season with the team finishing bottom of Eryri One moving to Eryri 2.

If the winner of Eryri Two does not want promotion, then there will be no relegation of the bottom team from Eryri One.

- 1.2. Eryri Teams will not be eligible for promotion to Premier Division.
- 1.3. The Eryri cup competition may be handicapped according to a handicapping system established by the local League Committee, based on the previous league season results.
- 1.4. Eryri teams will be permitted to enter bespoke team selections agreed locally within the Eryri League to support player development and competitive matches to raise the standard of competitive matches. Within a team, at any fixture, all players must play in merit order.

For matches where both teams are from the same club rule 7.11 will apply and the higher ranked player must play for the higher team at any string

- 1.5. To enable the completion of as many full matches as possible, for teams that are short of players there will be the facility to "draw down" up to two players from any higher team within the club, in limited circumstances, and with certain conditions.

Up to two players ranked 3, 4 and 5 in a higher ranked team will be allowed to play for a lower ranked team within that club but only if the higher ranked team does not have a game and the lower ranked team would be unable to field a full side without doing so. This would be subject to the following conditions:-

- a. If lower ranked players can play up, they must do so first before any "playing down" is permitted.
- b. Teams must still play in club merit order within an individual team.

- c. Unavailability must be confirmed to the satisfaction of the opposing captain before this relaxation of rule 5.4 is permitted. If the opposing captain disagrees, the team must fulfil the fixture without a full complement of players.