



Application

The Micro New-Age Continuous LED recessed fitting is constructed from anodised aluminium and is designed with high intensity LED emitters for a wide range of interior applications including shelf & cabinet illumination.

Body

Extruded Aluminium body with a choice of clear or Micro-prism diffusers.

Sizes (nominal)

Length: 130/500/900/1000/1400 mm

Overall Lengths may be specified in increments of 80mm subject to MOQ.

Control Gear

- StandardLED
- DALI DimmingLED
- DSI DimmingLED

Options Available

- Add /EMG to codes for Emergency
- Add /EMG/ST to codes for Self-Test Emergency
- Add /EMG/AD to codes for Addressable Emergency
- Add /DALI to codes for DALI Dimming
- Add /DSI to codes for DSI Dimming

Attachments

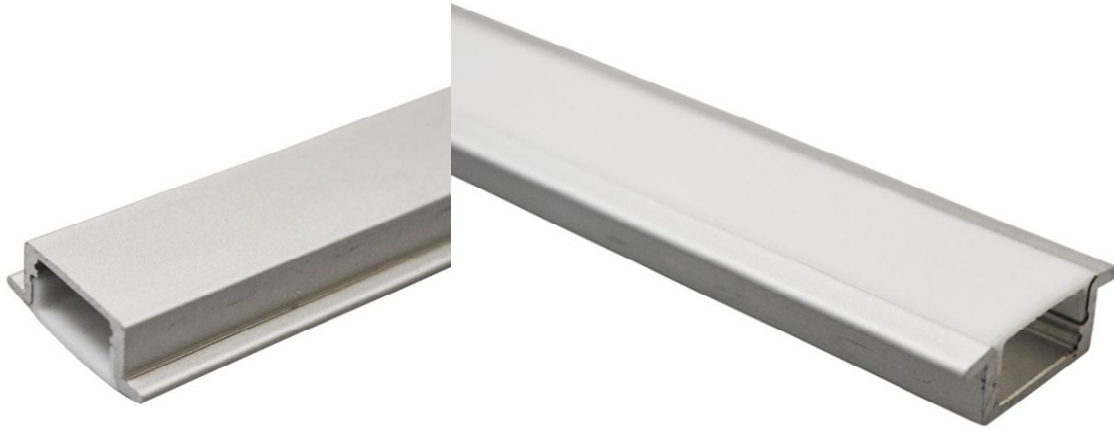
- Add /PIR to codes for InbuiltPIR
- Add /RGB to codes for ColourChanging
- Add /MP to codes for Micro-prismLens
- Add /IP65 to codes for IP65Rating

LED Boards

All Luminaires are supplied with colour 840, 4000k LED's as standard. Options are available from 3000k to 5000k. All LED data and performance data is taken at an ambient temperature of +25 degrees Celsius.

Main Attributes

- Up to 115lm/watt
- 50,000 HourLife
- High ColourRendering
- SelfCooling
- 5 YearGuarantee
- CRI>80



Catalogue Codes

Wattage	Length	Width	Depth	Milliamp	Catalogue Code
2.4 W	130 mm	18 mm	8 mm	50 mA	SL/LED/250/MICRO/N-A/CON/REC
10.8 W	500 mm	18 mm	8 mm	50 mA	6L/LED/1200/MICRO/N-A/CON/RE
20.4 W	900 mm	18 mm	8 mm	50 mA	6L/LED/2300/MICRO/N-A/CON/RE
22.8 W	1000 mm	18 mm	8 mm	50 mA	6L/LED/2500/MICRO/N-A/CON/RE
32.4 W	1400 mm	18 mm	8 mm	50 mA	6L/LED/3700/MICRO/N-A/CON/RE

Additional lumen outputs are available and codes may vary from those stated. Please contact us for further details.

All luminaires comply with CIBSE Lighting Guide and are designed and manufactured to conform to the general requirements of BS4533. A stringent quality control operation in accordance with ISO 9001 ensures customer satisfaction. All luminaires are accredited with the CE mark.