



MODERN CITY LIVING



This is a computer generated image. Materials, design and landscaping may differ from those illustrated.

FEATURE 17
SCENE / 2
— WALTHAMSTOW —

www.countrysideproperties.com/feature17
feature17@cpplc.com

Marketing Suite open daily from 10am - 5pm.
Wood Street, Walthamstow, London, E17 3HX (SAT NAV: E17 3HX)

Every care has been taken in the preparation of this brochure. The details contained therein are for guidance only and should not be relied upon as exactly describing any of the particular material illustrated or written by any order under the Consumer Protection from Unfair Trading Regulations 2008. This information does not constitute a contract, part of a contract or a warranty. Countryside operates a programme of continuous product development. All computer generated images are indicative and may be subject to change. All internal imagery depicts previous Countryside developments, specification may vary from that shown. All time and distances quoted are approximate and taken from either google.co.uk or nationalrail.co.uk. March 2020.



FEATURE 17
SCENE / 2
— WALTHAMSTOW —

TURNER HOUSE / FIRST FLOOR

FLOORPLANS

PRESENTED BY



TURNER HOUSE / FIRST FLOOR



289 / 2 BED APARTMENT

LIVING/DINING/KITCHEN AREA	5.94M X 4.49M	19'6" X 14'9"
MASTER BEDROOM	3.31M X 3.80M	10'10" X 12'6"
BEDROOM 2	3.31M X 3.51M	10'10" X 11'6"
TOTAL INTERNAL AREA	72 SQM	775 SQFT
BALCONY	1.58M X 5.38M	5'2" X 17'8"

291 / 2 BED APARTMENT

LIVING/DINING/KITCHEN AREA	3.67M X 6.46M	12'0" X 21'2"
MASTER BEDROOM	2.91M X 5.27M	9'7" X 17'4"
BEDROOM 2	2.65M X 4.12M	8'8" X 13'6"
TOTAL INTERNAL AREA	64 SQM	688.9 SQFT
BALCONY	1.5M X 5.82M	4'11" X 19'1"

293 / 1 BED APARTMENT

LIVING/DINING/KITCHEN AREA	6.70M X 3.55M	22'0" X 11'8"
MASTER BEDROOM	5.23M X 3.20M	17'2" X 10'6"
TOTAL INTERNAL AREA	52 SQM	559.7 SQFT
BALCONY	1.51M X 3.99M	4'11" X 13'1"

324 / 2 BED APARTMENT

LIVING/DINING/KITCHEN AREA	4.79M X 5.62M	15'9" X 18'5"
MASTER BEDROOM	4.50M X 3.60M	14'9" X 11'10"
BEDROOM 2	3.26M X 4.38M	10'8" X 14'4"
TOTAL INTERNAL AREA	76 SQM	818.1 SQFT
BALCONY	1.51M X 5.3M	4'11" X 17'5"

326 / 1 BED APARTMENT

LIVING/DINING/KITCHEN AREA	6.79M X 3.72M	22'3" X 12'3"
MASTER BEDROOM	5.00M X 3.20M	16'5" X 10'6"
TOTAL INTERNAL AREA	50 SQM	538.2 SQFT
BALCONY	1.58M X 3.39M	5'2" X 11'2"

351 / 1 BED APARTMENT

LIVING/DINING/KITCHEN AREA	3.18M X 8.06M	10'5" X 26'5"
MASTER BEDROOM	3.45M X 4.27M	11'4" X 14'0"
TOTAL INTERNAL AREA	52 SQM	559.7 SQFT
BALCONY	1.51M X 5.26M	4'11" X 17'3"

353 / 2 BED APARTMENT

LIVING/DINING/KITCHEN AREA	4.28M X 6.86M	14'1" X 22'6"
MASTER BEDROOM	3.99M X 3.86M	13'1" X 12'8"
BEDROOM 2	5.24M X 2.75M	14'9" X 22'6"
TOTAL INTERNAL AREA	79 SQM	850.3 SQFT
BALCONY 1	1.51M X 3.35M	4'11" X 11'0"
BALCONY 2	1.73M X 4.80M	5'8" X 15'9"

355 / 1 BED APARTMENT

LIVING/DINING/KITCHEN AREA	3.57M X 7.61M	11'9" X 25'0"
MASTER BEDROOM	2.90M X 4.16M	9'6" X 13'8"
TOTAL INTERNAL AREA	50 SQM	538.2 SQFT
BALCONY	1.51M X 3.77M	4'11" X 12'4"

357 / 2 BED APARTMENT

LIVING/DINING/KITCHEN AREA	5.30M X 5.31M	17'5" X 17'5"
MASTER BEDROOM	3.41M X 4.11M	11'2" X 13'6"
BEDROOM 2	2.86M X 4.11M	9'5" X 13'6"
TOTAL INTERNAL AREA	74 SQM	796.5 SQFT
BALCONY	1.51M X 5.5M	4'11" X 18'1"

290 / 1 BED APARTMENT

LIVING/DINING/KITCHEN AREA	5.04M X 4.99M	16'6" X 16'5"
MASTER BEDROOM	3.35M X 4.11M	11'0" X 13'6"
TOTAL INTERNAL AREA	50 SQM	538.2 SQFT
BALCONY	1.5M X 5.32M	4'11" X 17'5"

292 / 2 BED APARTMENT

LIVING/DINING/KITCHEN AREA	7.55M X 4.00M	24'9" X 13'2"
MASTER BEDROOM	2.90M X 3.61M	9'6" X 11'10"
BEDROOM 2	4.50M X 2.75M	14'9" X 9'0"
TOTAL INTERNAL AREA	73 SQM	785.8 SQFT
BALCONY	1.51M X 10.19M	4'11" X 33'5"

294 / 2 BED APARTMENT

LIVING/DINING/KITCHEN AREA	6.73M X 3.63M	22'1" X 11'11"
MASTER BEDROOM	5.86M X 2.75M	19'3" X 9'0"
BEDROOM 2	2.77M X 4.15M	9'1" X 13'7"
TOTAL INTERNAL AREA	74 SQM	796.5 SQFT
BALCONY	1.58M X 6.51M	5'2" X 21'4"

325 / 1 BED APARTMENT

LIVING/DINING/KITCHEN AREA	6.79M X 3.72M	22'3" X 12'3"
MASTER BEDROOM	5.00M X 3.20M	16'5" X 10'6"
TOTAL INTERNAL AREA	51 SQM	549.0 SQFT
BALCONY	1.51M X 3.63M	4'11" X 11'11"

327 / 2 BED APARTMENT

LIVING/DINING/KITCHEN AREA	4.76M X 6.13M	15'7" X 20'1"
MASTER BEDROOM	4.49M X 2.75M	14'9" X 9'0"
BEDROOM 2	3.01M X 4.13M	9'11" X 13'7"
TOTAL INTERNAL AREA	73 SQM	785.8 SQFT
BALCONY	1.58M X 5.27M	5'2" X 17'4"

352 / 2 BED APARTMENT

LIVING/DINING/KITCHEN AREA	6.48M X 5.11M	21'3" X 14'0"
MASTER BEDROOM	2.98M X 3.88M	9'9" X 12'9"
BEDROOM 2	3.44M X 4.66M	11'3" X 15'4"
TOTAL INTERNAL AREA	76 SQM	818.1 SQFT
BALCONY	1.51M X 5.04M	4'11" X 16'6"

354 / 1 BED APARTMENT

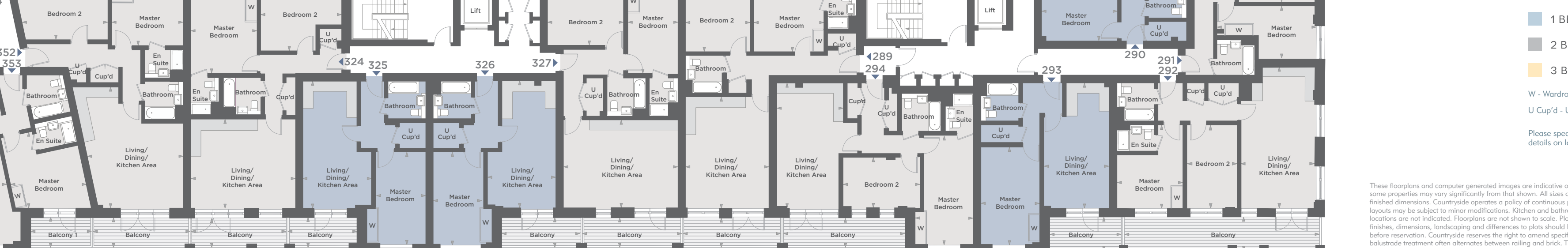
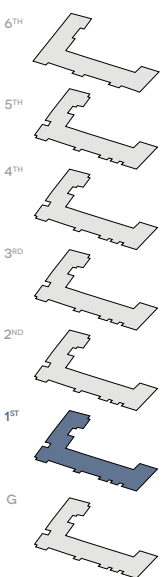
LIVING/DINING/KITCHEN AREA	3.56M X 7.61M	11'8" X 25'0"
MASTER BEDROOM	2.90M X 4.16M	9'6" X 13'8"
TOTAL INTERNAL AREA	50 SQM	538.2 SQFT
BALCONY	1.73M X 3.27M	5'8" X 10'9"

356 / 2 BED APARTMENT

LIVING/DINING/KITCHEN AREA	3.66M X 7.37M	12'0" X 24'2"
MASTER BEDROOM	3.44M X 5.00M	11'3" X 16'5"
BEDROOM 2	2.55M X 5.00M	8'4" X 16'5"
TOTAL INTERNAL AREA	70 SQM	764.2 SQFT
BALCONY	1.51M X 5.76M	4'11" X 18'11"



FLOOR INDICATOR



- 1 BED APARTMENT
- 2 BED APARTMENT
- 3 BED APARTMENT

- W - Wardrobe
- Cup'd - Cupboard
- U Cup'd - Utility Cupboard

Please speak to a sales consultant for further details on landscaping

These floorplans and computer generated images are indicative only and depicts a typical apartment, some properties may vary significantly from that shown. All sizes are approximate with maximum finished dimensions. Countryside operates a policy of continuous product development and all room layouts may be subject to minor modifications. Kitchen and bathroom layouts are indicative. Radiator locations are not indicated. Floorplans are not shown to scale. Plot specification, internal and external finishes, dimensions, landscaping and differences to plots should be checked with a Sales Consultant before reservation. Countryside reserves the right to amend specifications as necessary. The balcony balustrade treatment often alternates between railing and brick. These dimensions are approximate figures and subject to change following specialist input from the metalwork sub-contractor. Kitchen designs may vary, please speak to a sales consultant for specific kitchen layouts.