



Albury Place

SHREWSBURY



2 Bed Apartments - Plots 5 & 6

These impressive 2 bedroom First Floor Apartments offer modern open plan living and feature a Juliette style balcony and parking. Additional features include: Porcelanosa tiles, Villeroy & Boch sanitary ware, Entry system & elevator.



2



1



1

- High Energy insulation, Central Heating and Triple Glazing
- Impressive open plan living accommodation
- Juliette style Balcony
- Contemporary Kitchen with Neff appliances
- Two Double Bedrooms and Bathroom (some with en suites)
- One secure allocated parking space with additional available
- Underfloor heating
- Mirror TVs in main Bathroom

To register your interest contact
judy@monks.co.uk or 07890 573553



SYHOMES




MONKS

Dimensions

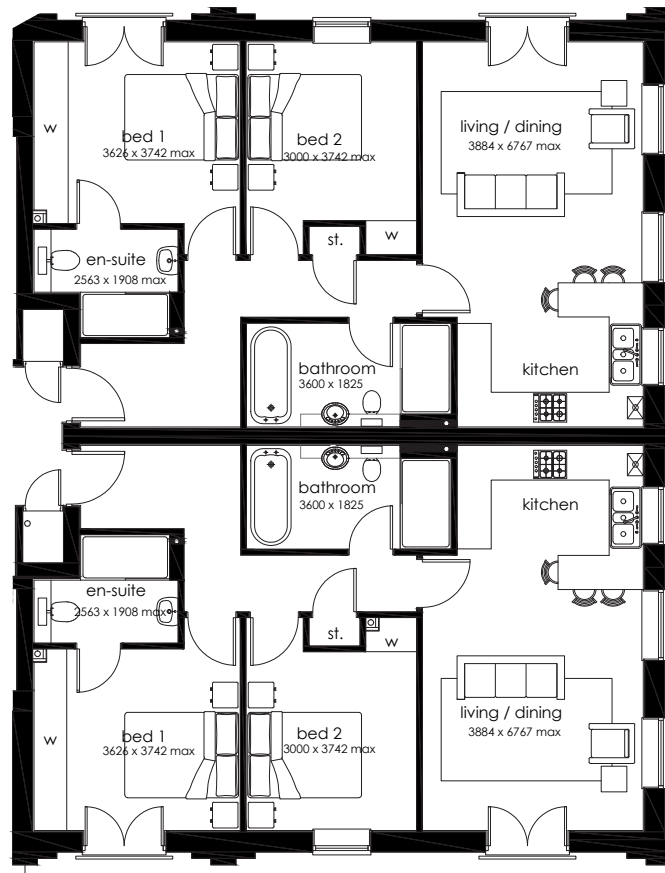
Kitchen

Living/Dining - 3.9 x 6.8m

Bathroom - 3.6 x 1.8m

Bedroom 1 - 3.6 x 3.7m

Bedroom 2 - 3.0 x 3.7m



To register your interest contact
judy@monks.co.uk or 07890 573553

