

# Yester Road, Chislehurst, BR7

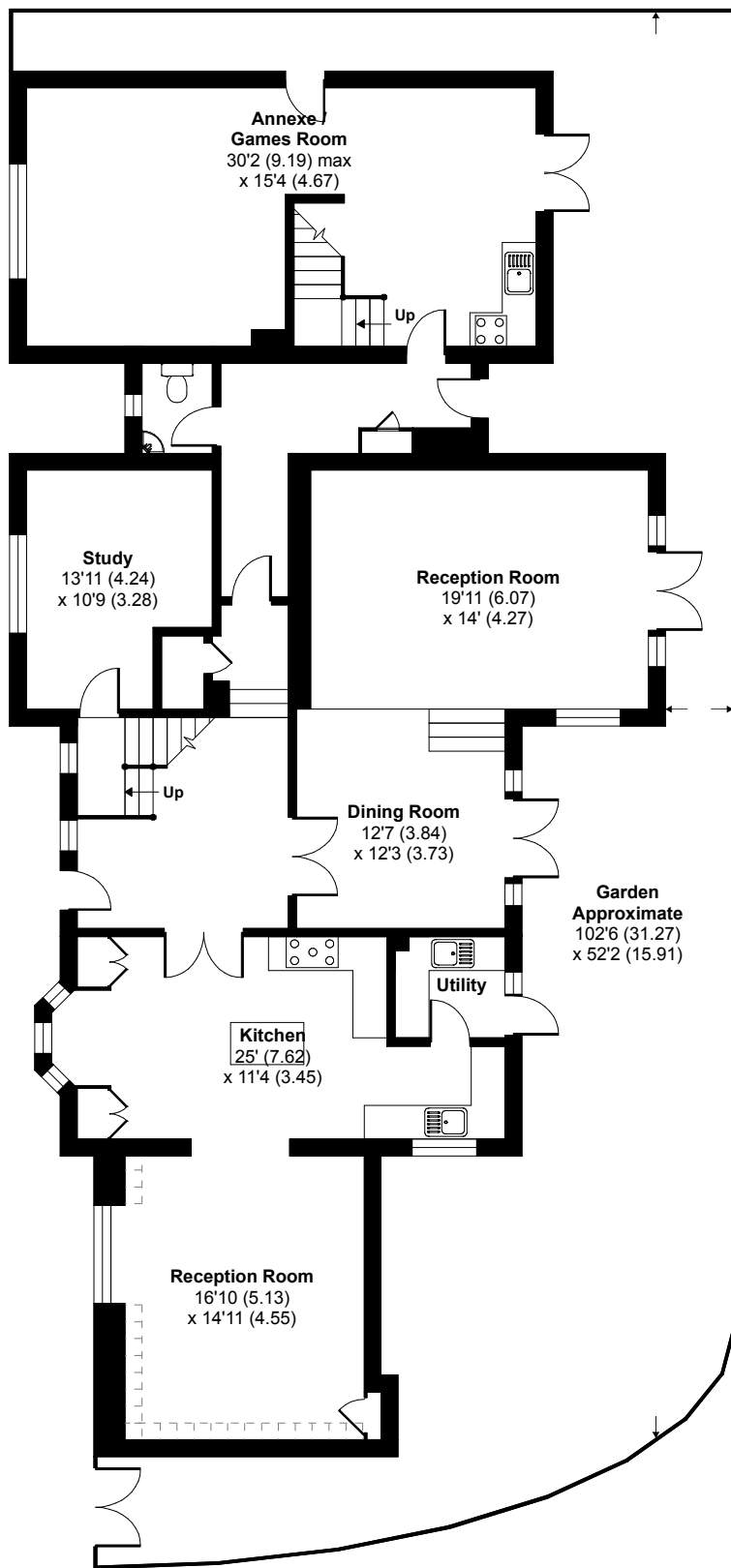
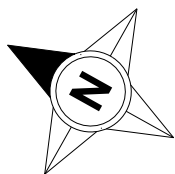
Approximate Area = 3335 sq ft / 309.8 sq m

Limited Use Area(s) = 66 sq ft / 6.1 sq m

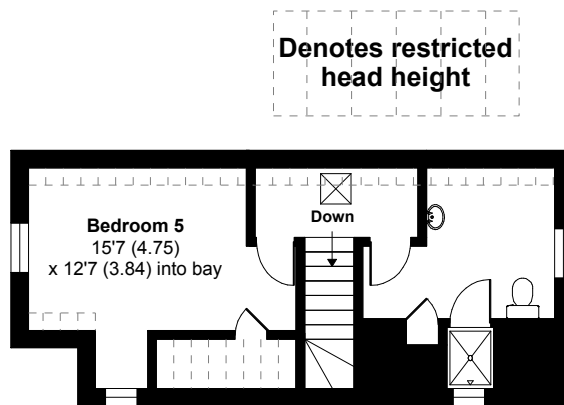
Outbuilding = 340 sq ft / 31.6 sq m

Total = 3741 sq ft / 347.5 sq m

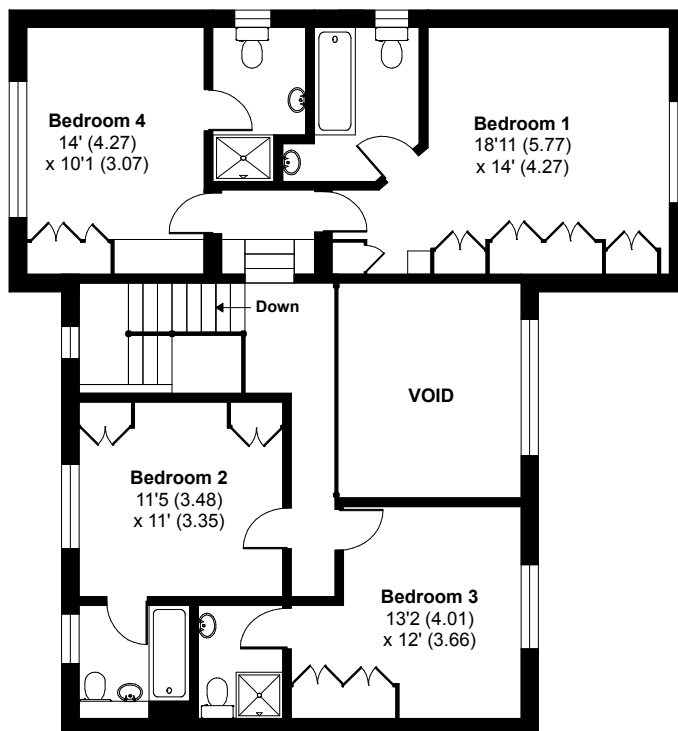
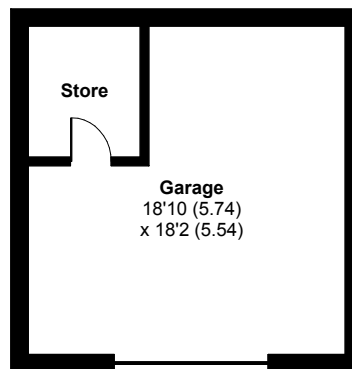
For identification only - Not to scale



GROUND FLOOR



SECOND FLOOR



FIRST FLOOR

Denotes restricted head height

