

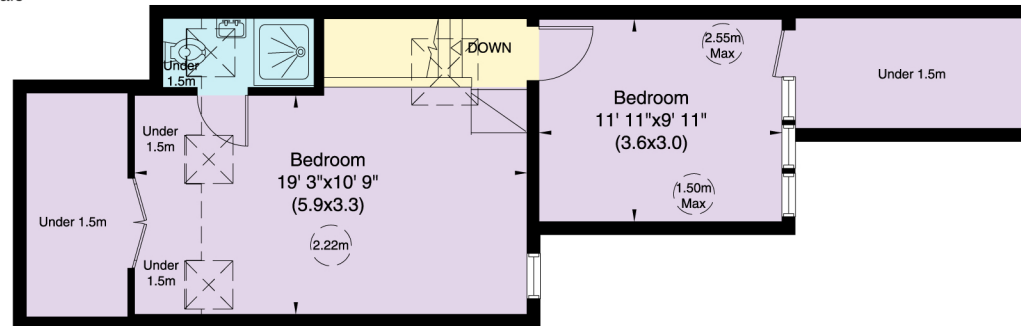
Mortimer Road, NW10

Gross internal area (approx.)

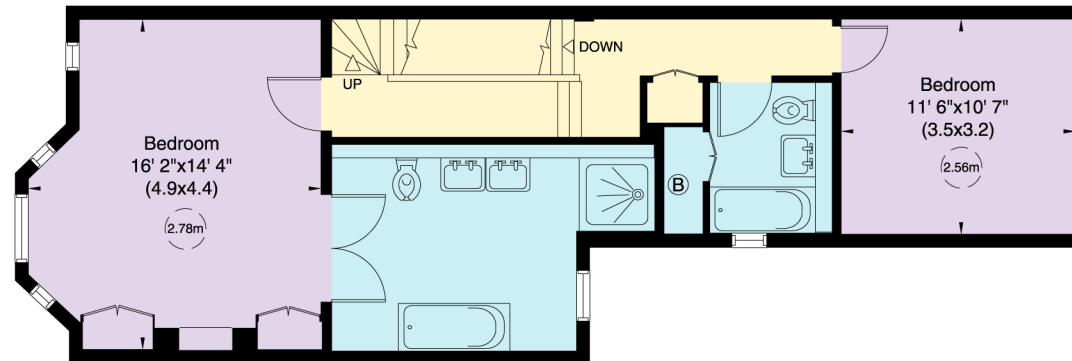
184 Sq m (1975 Sq ft) Including Under 1.5m

169 Sq m (1816 Sq ft) Excluding Under 1.5m

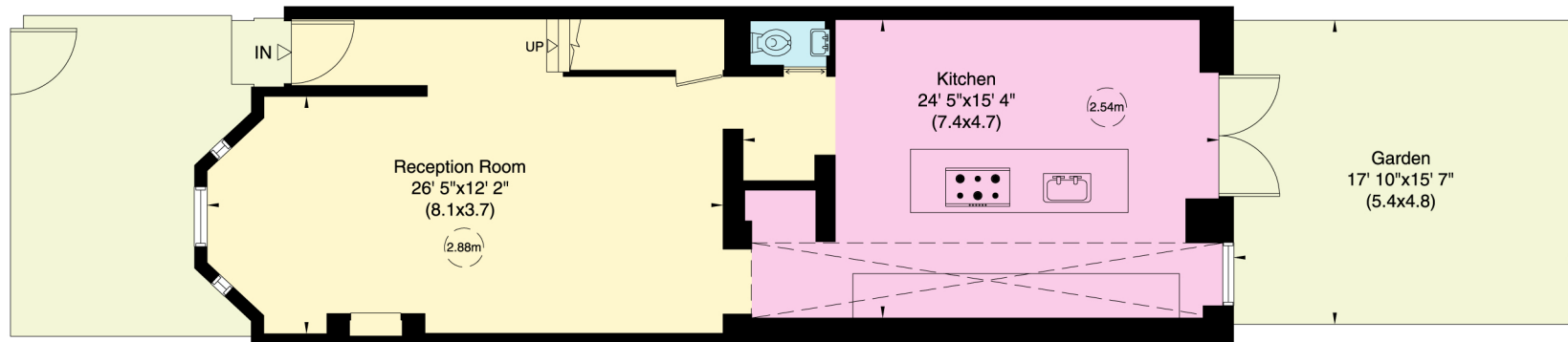
For identification only, Not to Scale



Second Floor



First Floor



Ground Floor

Not to scale, for guidance only and must not be relied upon as a statement of fact. All measurements and areas are approximate only (and have been prepared in accordance with the current edition of the RICS Code of Measuring Practice).