



VERDO

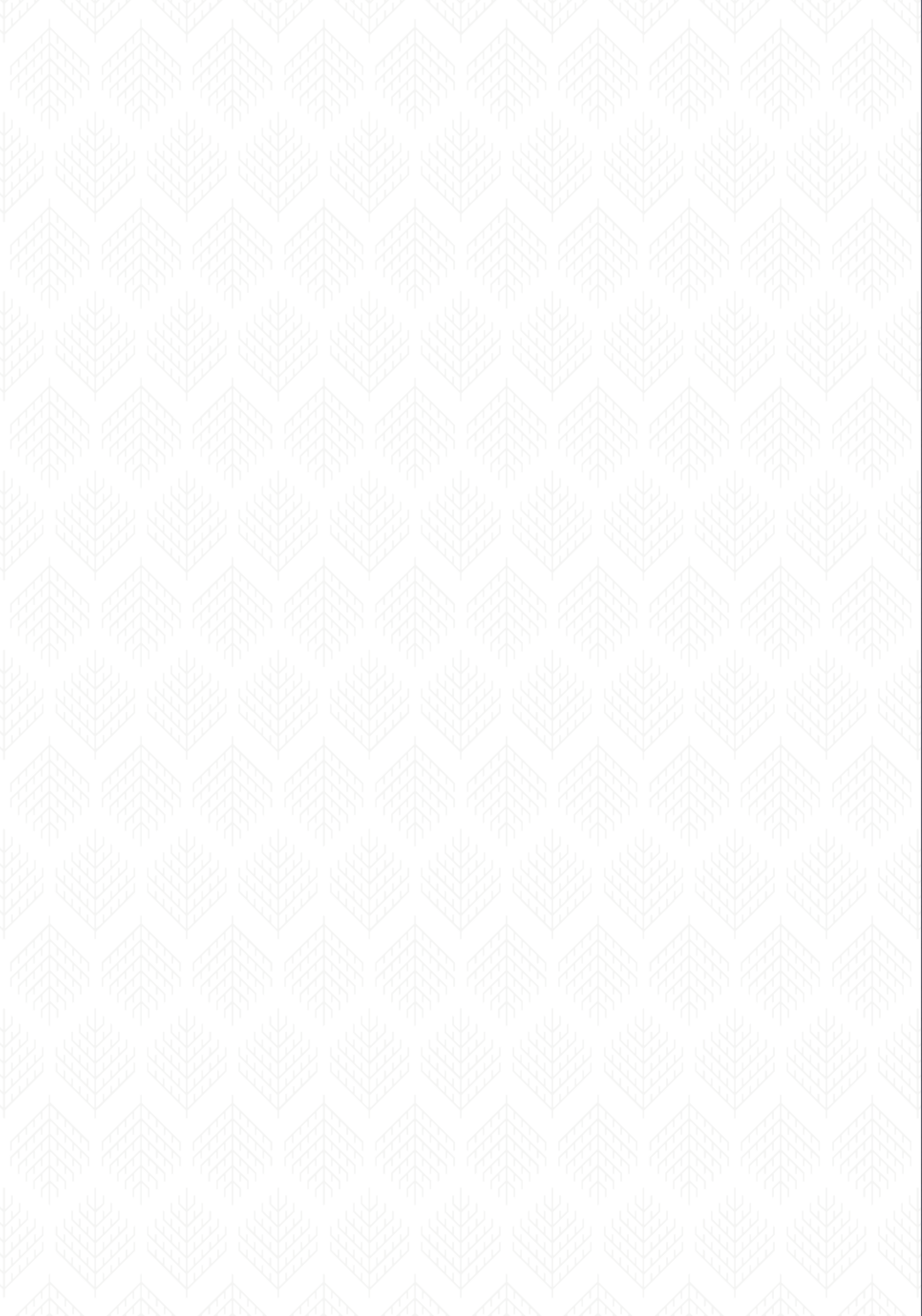
KEW BRIDGE

LILY HOUSE

ECOWORLD

LONDON

CREATING TOMORROW & BEYOND



FEEL THE

E N
E R
G Y

Some places simply have a dynamism,
a real sense of energy and life.



VERDO

KEW BRIDGE

The New Place To Be

Surrounded by well-kept parks, the tropical gardens of Kew and the River Thames, Verdo - Kew Bridge is more than a selection of beautiful new homes.

This is the start of an exciting regeneration and a whole new neighbourhood, with new people to meet and new places to go.

Following extensive research in the community, there will be new shops, cafés and restaurants, with new paths and bridges.

It's a new destination in West London, hosting events in a dedicated space set aside for the local community.

With the Royal Botanic Gardens, Kew Village and Chiswick close by – plus outstanding rail and road connections – you can enjoy contemporary living in a place with a uniquely vibrant spirit. This is more than a fresh start.

This is a passionate new beginning.



CGI is indicative only / Not representative of the final product

A Prime Location

With Kew Bridge station on your doorstep and Gunnersbury Tube station just 10 minutes' walk away, the delights of the capital are effortlessly close.



Drive Times



M4	4 mins
Chiswick High Road	4 mins
M25	12 mins
Richmond Park	14 mins
London Heathrow Airport	16 mins

London City Airport	45 mins
London Luton Airport	45 mins
London Gatwick Airport	50 mins
London Stansted Airport	90 mins

Source: Google Maps

Underground



Hammersmith	10 mins
Earl's Court	16 mins
Victoria	24 mins
Waterloo	28 mins
Embankment	31 mins

Journey time from Gunnersbury Station

Overground



Kew Gardens	3 mins
Richmond	8 mins
West Hampstead	20 mins

Journey time from Gunnersbury Station

West London is renowned as an international centre of learning excellence, with many world-class institutions across finance, law, medicine, media, fashion and the arts.

With superb cross-London connections, Verdo - Kew Bridge offers effortless access to everything today's student needs for success and enjoyment. These new homes are an ideal choice for anyone looking to study at the capital's prestigious colleges and universities.

Voted top by London students in 2016, the University of West London's Brentford campus is just 1.5 miles away, while the internationally-acclaimed University of Roehampton is just twenty minutes by car. For those with a keen interest in art and design, the University of the Arts London is easily accessible via multiple public transport routes.



Local Schools

No.	School	Ofsted Rating	Status
1	International School of London	Independent School	Private School
2	Strand-on-the-Green Junior School	Good	Community School
3	Kew Green Preparatory School	Independent School	Private School
4	Falcons Pre Preparatory School for Boys	Independent School	Private School
5	Lionel Primary School	Outstanding	Community School
6	Green Dragon Primary School	Good	Community School
7	Heathfield House School	Independent School	Private School
8	Grove Park Primary School	Outstanding	Community School
9	The Queen's Church of England Primary School	Outstanding	Community School
10	Kew House	Independent School	Private School
11	Ark Acton Academy	N/A	Community School
12	Brentford School for Girls	Outstanding	Community School
13	Twyford Church of England High School	Outstanding	Community School
14	Gunnersbury Catholic School	Outstanding	Community School

Ofsted ratings are correct at time of print.



University of West London

20 minutes from Kew Bridge Station
Ranked as the top modern university in London.
98% of graduates are in employment or further study within six months of graduation.



Imperial College London

35 minutes from Gunnersbury Station
Global top ten university (ranked 9th) with a world-class reputation in science, engineering, business and medicine.



London School of Economics and Political Science

46 minutes from Gunnersbury Station
One of the foremost social science universities in the world.



King's College London

45 minutes from Gunnersbury Station
A world-class reputation in the humanities, law, the sciences (including a wide range of health areas such as psychiatry, medicine, nursing and dentistry) and social sciences including international affairs.



University College London

45 min from Kew Bridge Station
Global top ten university (ranked 8th) with a world-class reputation.



University of Roehampton

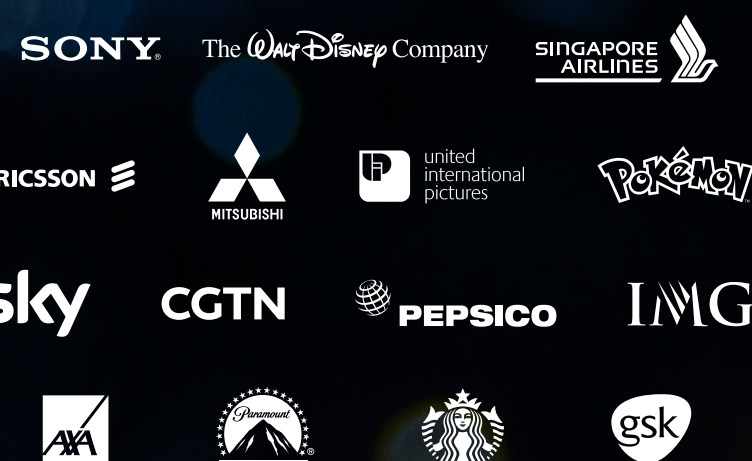
22 minutes from Kew Bridge Station
First class reputation in sports and science.

Travel times and distances are taken from Google Maps, rankings are taken from timeshighereducation.com

The Excitement is Growing

With fantastic transport connections and close proximity to West London's most beautiful green spaces, it's long been an area with huge potential. Now, it's finally time for Brentford to thrive, thanks to a visionary regeneration plan that will redefine the town and make the most of its extraordinary location.

Just over a mile from Verdo - Kew Bridge, the Golden Mile and Chiswick Business Park are home to the Global, European and National headquarters of some of the world's leading businesses.



200+

Companies have chosen to find their homes along the Golden Mile, making it a hub for substantial investment



17,250

Capacity stadium for Brentford FC and London Irish Rugby Club at the heart of the regeneration zone



200,000

Jobs in the local area



£5.45M

Improvements to the riverside



Highest

The borough has the highest concentration of blue chip companies, as well as media and broadcasting jobs in London



15%

House price growth predicted in West London from 2018 to 2022



+40%

25% of the borough is renters with an expected 40% increase over the next 10 years



290,000

The population of Hounslow is expected to grow by over 290,000 by 2021



With connections as good as these, it's easy to be spontaneous at the weekend – while enjoying fast commuting into central London during the week.



National Rail

Kew Bridge railway station, on the South Western network, is just 1 minute's walk away. Trains run every 15 minutes to Clapham Junction (17 mins), Vauxhall (23 mins) and Waterloo (30 mins). You can also travel to Reading, Guildford and Southampton without needing to go into central London.

Underground

Gunnersbury station is around 10 minutes' walk away. From here, pick up the District line to Earls Court (16 mins), Victoria (24 mins) and Embankment (31 mins).

Overground

Gunnersbury station also offers Overground services, with modern, air-conditioned trains. Travel to Richmond (8 mins), West Hampstead (20 mins) and Highbury & Islington (40 mins).

Road

Verdo - Kew Bridge is less than half a mile to the M4, offering direct motorway journeys to Slough, Reading, Swindon and Bristol as well as easy routes to Bicester and Oxford via the M40. With Kew Bridge so close, the meeting point of London's key North and South Circular routes, it's easy to cross the river or head North.

Air

Join the M4 for a fast journey to London Heathrow (10 miles; from 20 mins) or take the train to Feltham and catch the bus link. If you're flying from Gatwick, take the train to Clapham Junction and hop on one of the regular southbound services (25 mins).

Journey times taken from tfl.co.uk and google.co.uk/maps

Welcome to Verdo - Kew Bridge, London's Most Exciting New Neighbourhood.

This breathtaking collection of studio, 1, 2 and 3 bedroom apartments surrounded by stunning private gardens, sits moments away from Kew Bridge and in the heart of West London's multi-million pound regeneration zone.

Verdo – Kew Bridge will also become a new destination in West London, a place with a dedicated space set aside for the local community with events and attractions throughout the year.



CGI is indicative only / Not representative of the final product

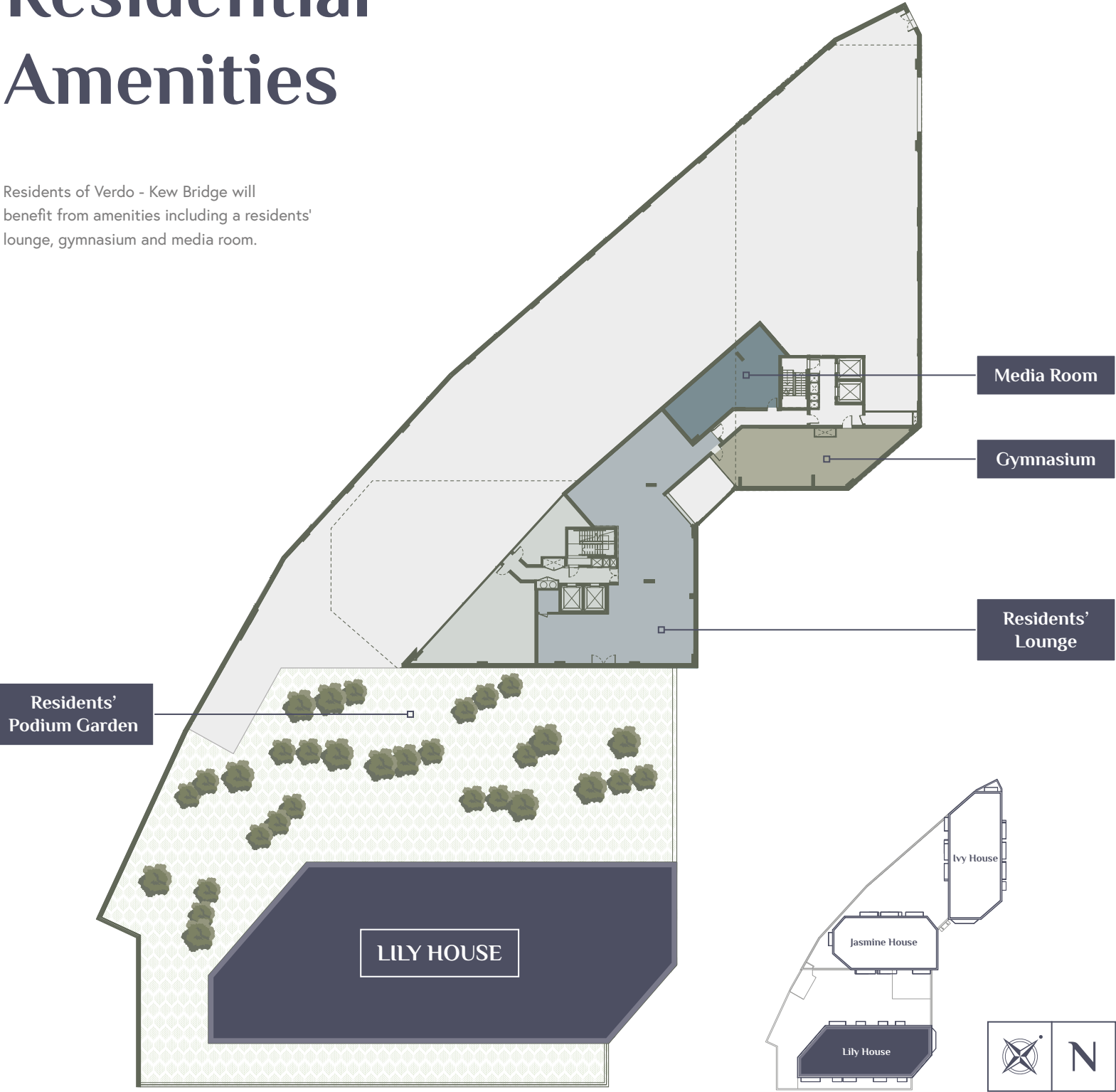


Lily House External View

CGI is indicative only / Not representative of the final product

Residential Amenities

Residents of Verdo - Kew Bridge will benefit from amenities including a residents' lounge, gymnasium and media room.



Media Room



Residents' Gym



Residents' Lounge





Residents' Lounge

CGI is indicative only / Not representative of the final product

Exclusively Yours

There's exquisite contemporary living, and there's living at Verdo - Kew Bridge.

Discover impeccably stylish interiors throughout, with a welcoming lobby managed by our on-site concierge.

All apartments have access to the spacious residents' lounge which includes social areas to meet friends, have dinner or relax, as well as work zones and a meeting room. The lounge links to a media room, where you can enjoy films or sporting events with friends, and a residents' gym.

The lounge spills directly out to the residents' podium gardens. The sunlit terraces and inviting play areas are waiting to be explored and enjoyed.

Photography depicts Verdo - Kew Bridge / Showhome and is indicative only



An Exquisite Home

Designed with modern lifestyles in mind, each apartment offers a spacious, light-filled living area and sleek contemporary kitchen, perfect for entertaining or relaxing.

Tall windows lead on to elegant balconies and quality finishes are used throughout. You can choose between two colour palette options to suit your individual taste.



Bedroom

Photography depicts Verdo - Kew Bridge Showhome and is indicative only



Living Space

Photography depicts Verdo - Kew Bridge Showhome and is indicative only



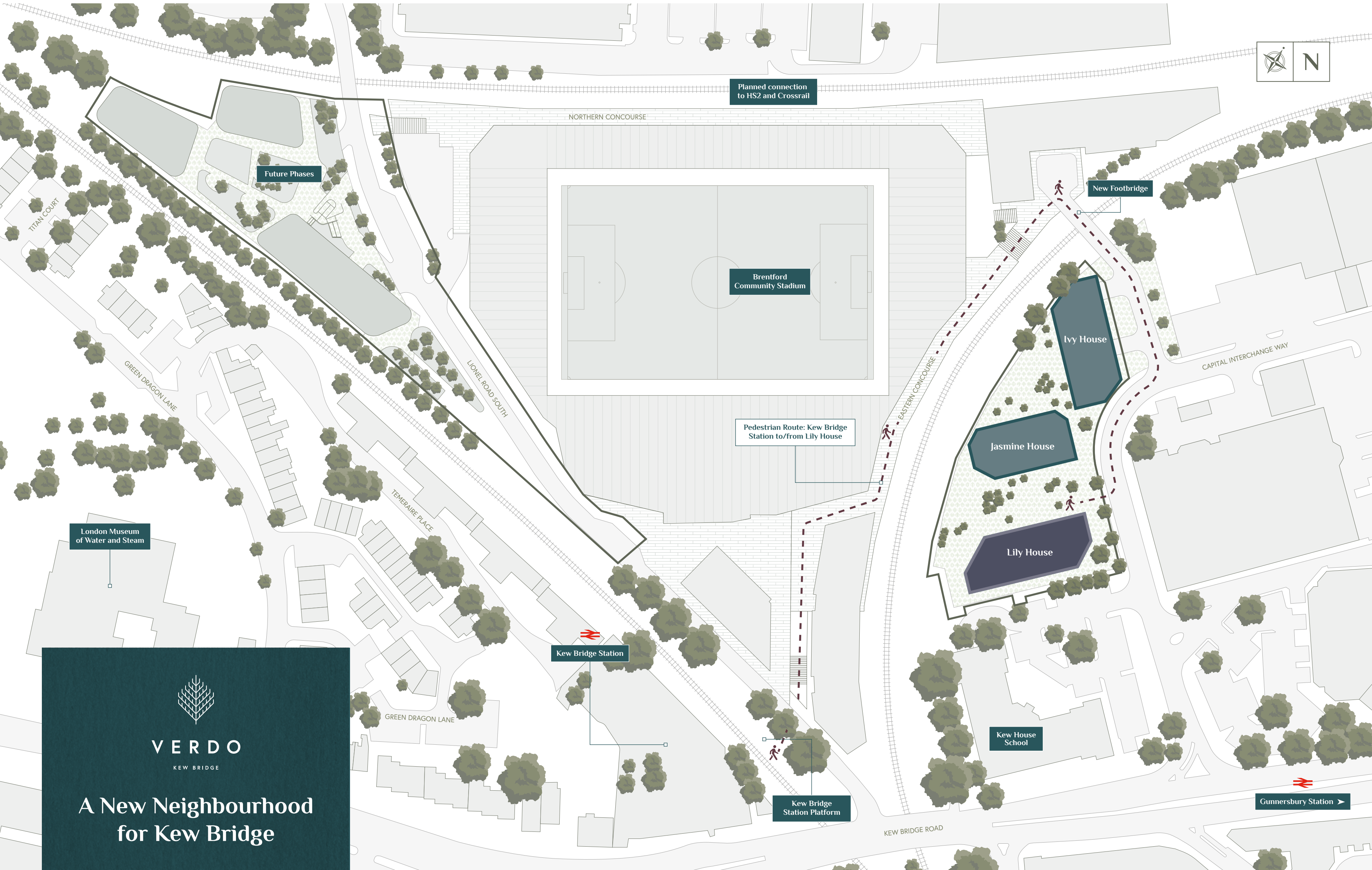
Contemporary Living

Enjoy the comfort, luxury and convenience of a stylish, modern home offering many of the services usually found in premium hotels.

From the concierge who signs for your packages to the exclusive residents' areas, Verdo - Kew Bridge is designed to make life easier. You'll also enjoy complete peace of mind, with gated access to the underground car park, audio-visual entry systems and CCTV throughout the development.

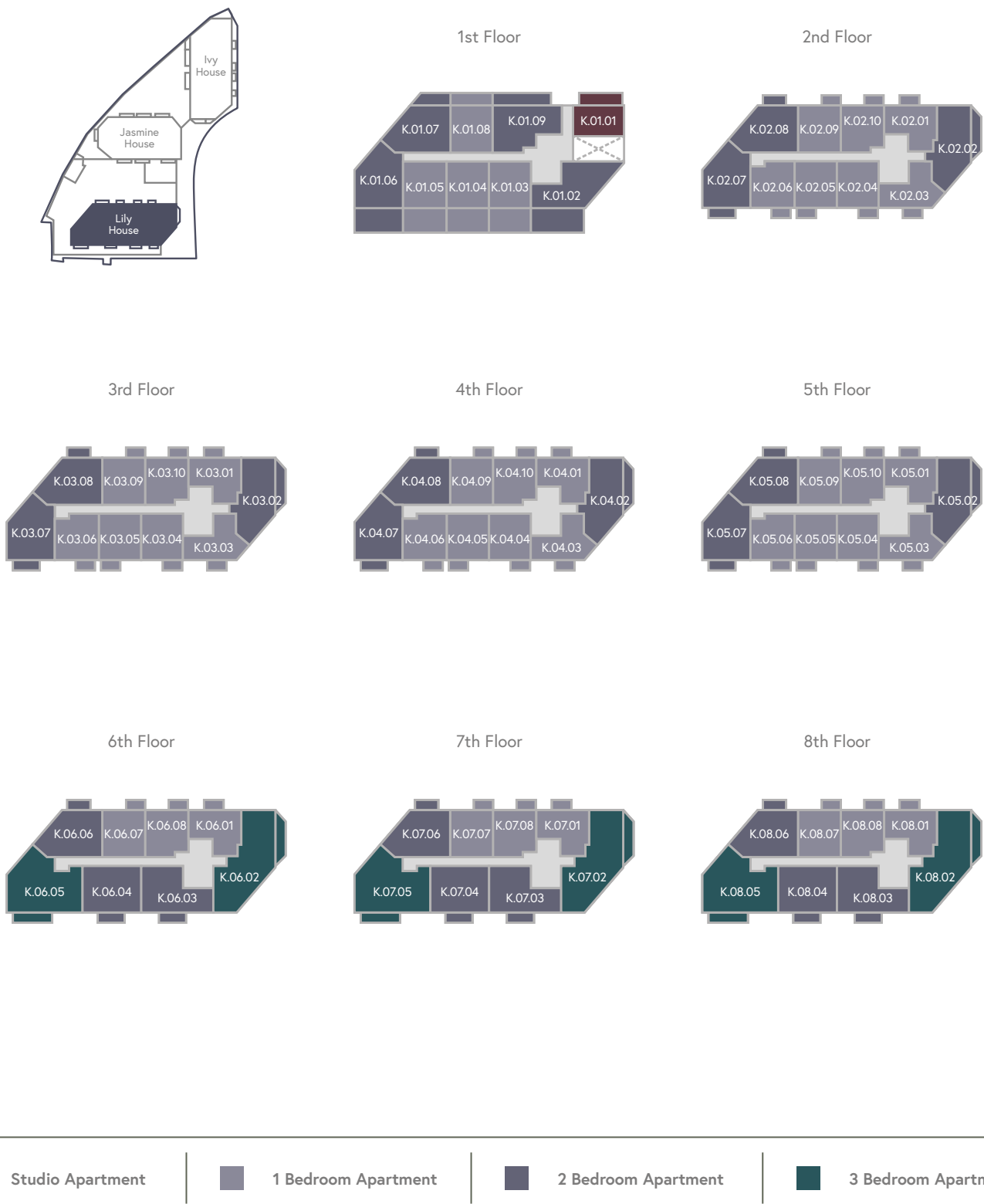
Kitchen

Photography depicts Verdo - Kew Bridge Showhome and is indicative only



Introducing Lily House at Verdo - Kew Bridge

Each of the 73 contemporary apartments benefits from the 24-hour concierge service, private gym, residents' lounge, media room and residents' podium gardens.

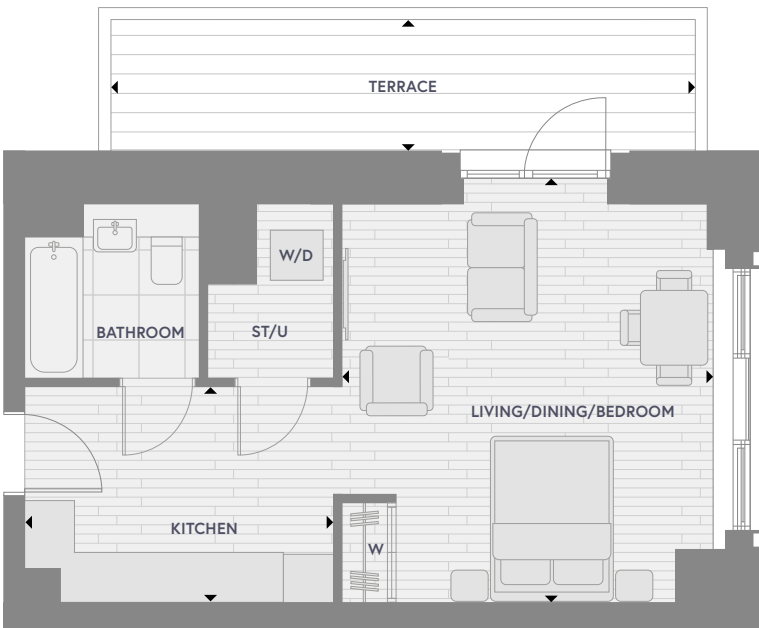


Lily House External View

CGI is indicative only / Not representative of the final product

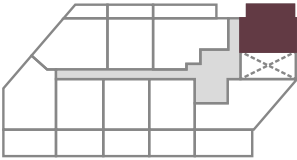
Apartment Type 1

Studio



Accommodation

Living/Dining/Bedroom	4.5 m x 4.7 m	14'9" x 15'5"
Kitchen	3.7 m x 2.5 m	12'2" x 8'6"
Total Area	38.9 sq m	418.8 sq ft
Terrace	12.6 sq m	135.9 sq ft



Plots

K.01.01

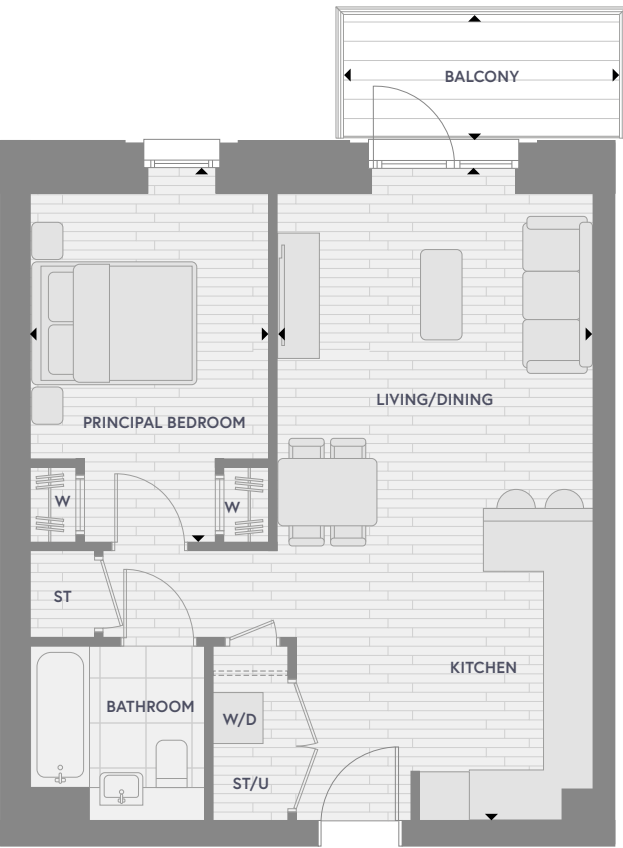


Measurement Points	W	Fitted Wardrobe	W/D	Washer/Dryer	U	Utility	ST	Storage
--------------------	---	-----------------	-----	--------------	---	---------	----	---------

All areas and dimensions have been taken from architect plans prior to construction therefore whilst the information is believed to be correct its accuracy cannot be guaranteed and does not form part of any contract. They are not intended to be used for carpet sizes or items of furniture. Purchasers must therefore rely on their own inspection to verify any information provided. All dimensions are within + or - 50mm.

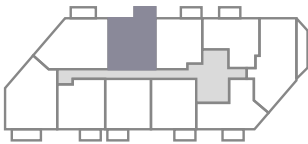
Apartment Type 2

1 Bedroom



Accommodation

Living/Kitchen	3.8 m x 7.5 m	12'6" x 24'7"
Principal Bedroom	2.8 m x 4.1 m	9'2" x 13'5"
Total Area	51.4 sq m	553.3 sq ft
Balcony	5.1 sq m	54.7 sq ft



Plots

K.02.09 | K.03.09
K.04.09 | K.05.09
K.06.07

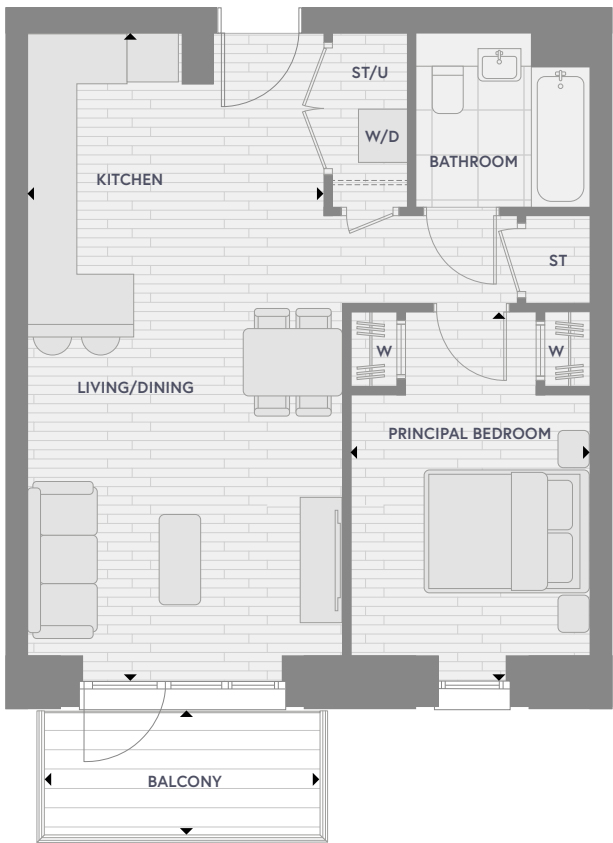


Measurement Points	W	Fitted Wardrobe	W/D	Washer/Dryer	U	Utility	ST	Storage
--------------------	---	-----------------	-----	--------------	---	---------	----	---------

All areas and dimensions have been taken from architect plans prior to construction therefore whilst the information is believed to be correct its accuracy cannot be guaranteed and does not form part of any contract. They are not intended to be used for carpet sizes or items of furniture. Purchasers must therefore rely on their own inspection to verify any information provided. All dimensions are within + or - 50mm.

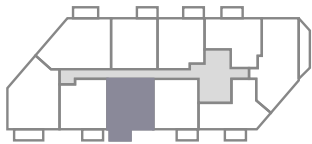
Apartment Type 2A

1 Bedroom



Accommodation

Living/Kitchen	3.6 m x 7.4 m	11'10" x 24'3"
Principal Bedroom	2.8 m x 4.1 m	9'2" x 13'5"
Total Area	51.2 sq m	551.6 sq ft
Balcony	5.1 sq m	54.7 sq ft



Plots

K.02.05		K.03.05
K.04.05		K.05.05

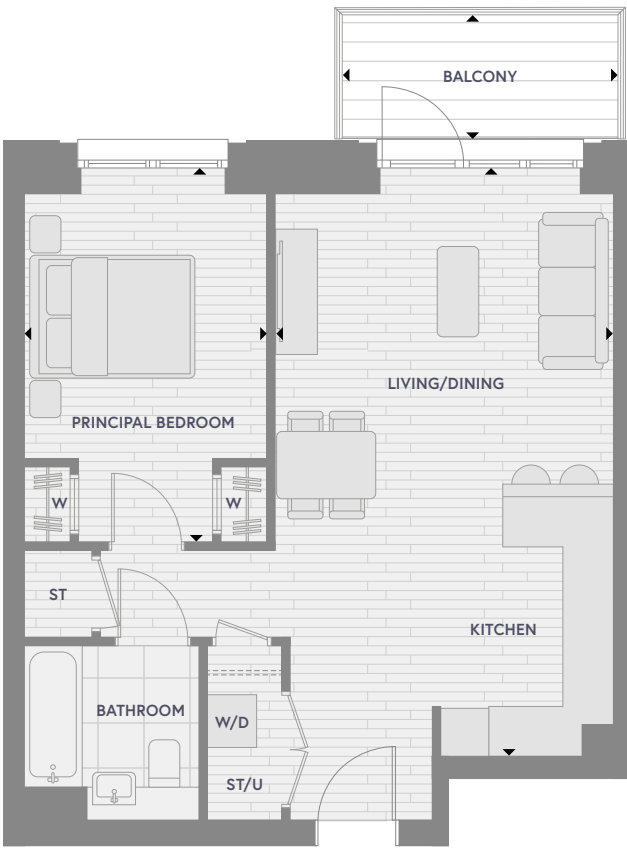


◀ ▶	Measurement Points	W	Fitted Wardrobe	W/D	Washer/Dryer	U	Utility	ST	Storage
-----	--------------------	---	-----------------	-----	--------------	---	---------	----	---------

All areas and dimensions have been taken from architect plans prior to construction therefore whilst the information is believed to be correct its accuracy cannot be guaranteed and does not form part of any contract. They are not intended to be used for carpet sizes or items of furniture. Purchasers must therefore rely on their own inspection to verify any information provided. All dimensions are within + or - 50mm.

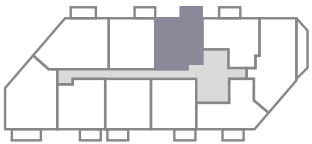
Apartment Type 2B

1 Bedroom



Accommodation

Living/Kitchen	3.9 m x 6.7 m	12'10" x 22'0"
Principal Bedroom	2.9 m x 4.2 m	9'6" x 13'9"
Total Area	52.5 sq m	566.1 sq ft
Balcony	5.1 sq m	54.7 sq ft



Plots

K.02.10		K.03.10
K.04.10		K.05.10
K.06.08		

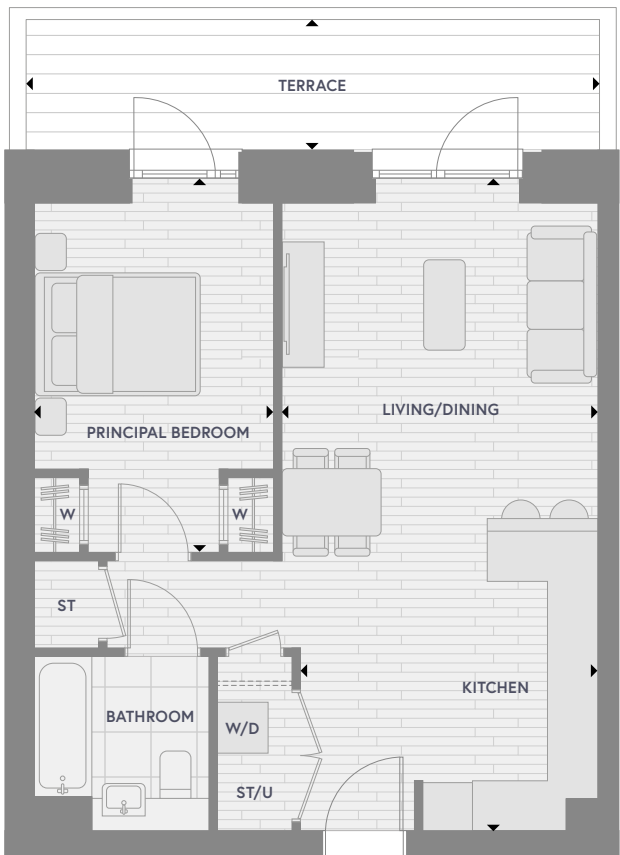


◀ ▶	Measurement Points	W	Fitted Wardrobe	W/D	Washer/Dryer	U	Utility	ST	Storage
-----	--------------------	---	-----------------	-----	--------------	---	---------	----	---------

All areas and dimensions have been taken from architect plans prior to construction therefore whilst the information is believed to be correct its accuracy cannot be guaranteed and does not form part of any contract. They are not intended to be used for carpet sizes or items of furniture. Purchasers must therefore rely on their own inspection to verify any information provided. All dimensions are within + or - 50mm.

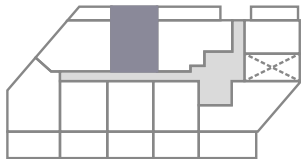
Apartment Type 2C

1 Bedroom



Accommodation

Living/Kitchen	3.8 m x 7.5 m	12'6" x 24'7"
Principal Bedroom	2.8 m x 4.1 m	9'2" x 13'5"
Total Area	51.6 sq m	555.9 sq ft
Terrace	10.9 sq m	116.8 sq ft



Plots

K.01.08

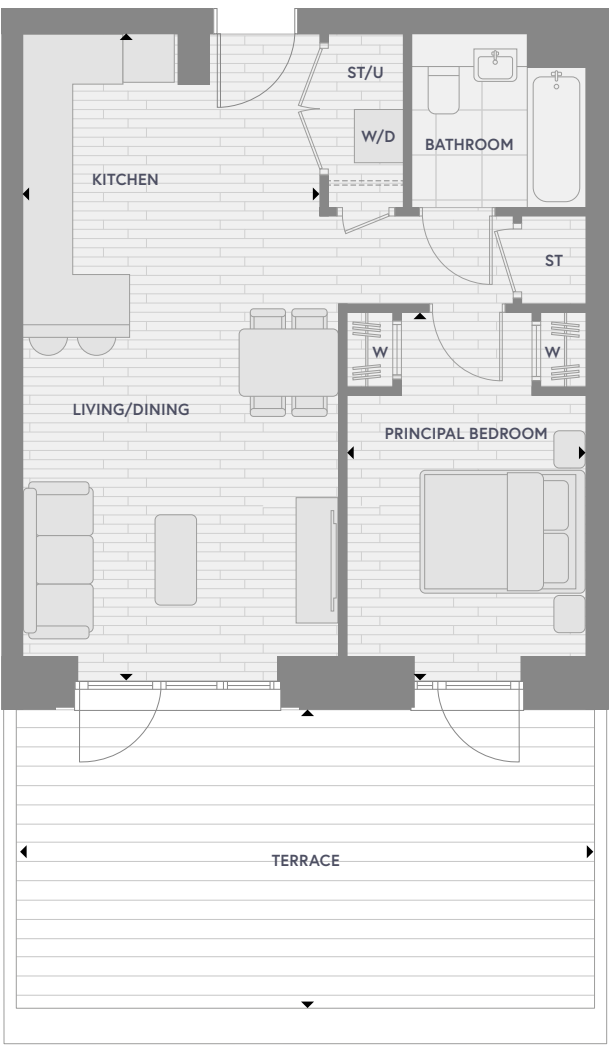


Measurement Points	W	Fitted Wardrobe	W/D	Washer/Dryer	U	Utility	ST	Storage
--------------------	---	-----------------	-----	--------------	---	---------	----	---------

All areas and dimensions have been taken from architect plans prior to construction therefore whilst the information is believed to be correct its accuracy cannot be guaranteed and does not form part of any contract. They are not intended to be used for carpet sizes or items of furniture. Purchasers must therefore rely on their own inspection to verify any information provided. All dimensions are within + or - 50mm.

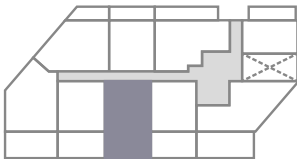
Apartment Type 2D

1 Bedroom



Accommodation

Living/Kitchen	3.5 m x 7.4 m	11'6" x 24'3"
Principal Bedroom	2.8 m x 4.1 m	9'2" x 13'5"
Total Area	51.3 sq m	552.2 sq ft
Terrace	26.6 sq m	286.2 sq ft



Plots

K.01.04

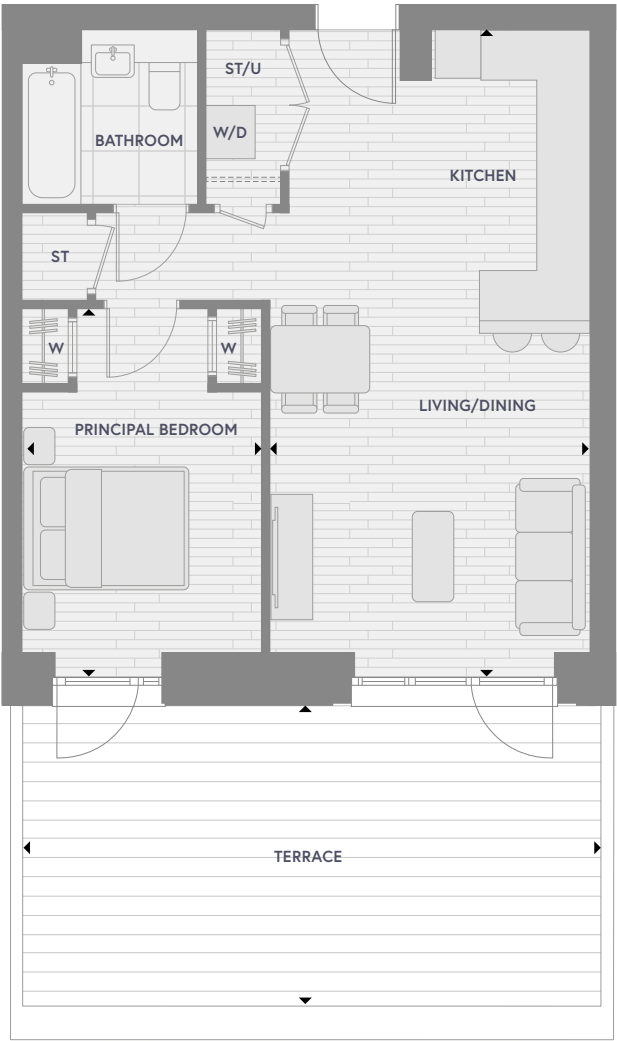


Measurement Points	W	Fitted Wardrobe	W/D	Washer/Dryer	U	Utility	ST	Storage
--------------------	---	-----------------	-----	--------------	---	---------	----	---------

All areas and dimensions have been taken from architect plans prior to construction therefore whilst the information is believed to be correct its accuracy cannot be guaranteed and does not form part of any contract. They are not intended to be used for carpet sizes or items of furniture. Purchasers must therefore rely on their own inspection to verify any information provided. All dimensions are within + or - 50mm.

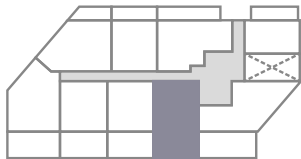
Apartment Type 2E

1 Bedroom



Accommodation

Living/Kitchen	3.8 m x 7.4 m	12'6" x 24'3"
Principal Bedroom	2.8 m x 4.1 m	9'2" x 13'5"
Total Area	51.6 sq m	555.4 sq ft
Terrace	25.0 sq m	269.1 sq ft



Plots

K.01.03

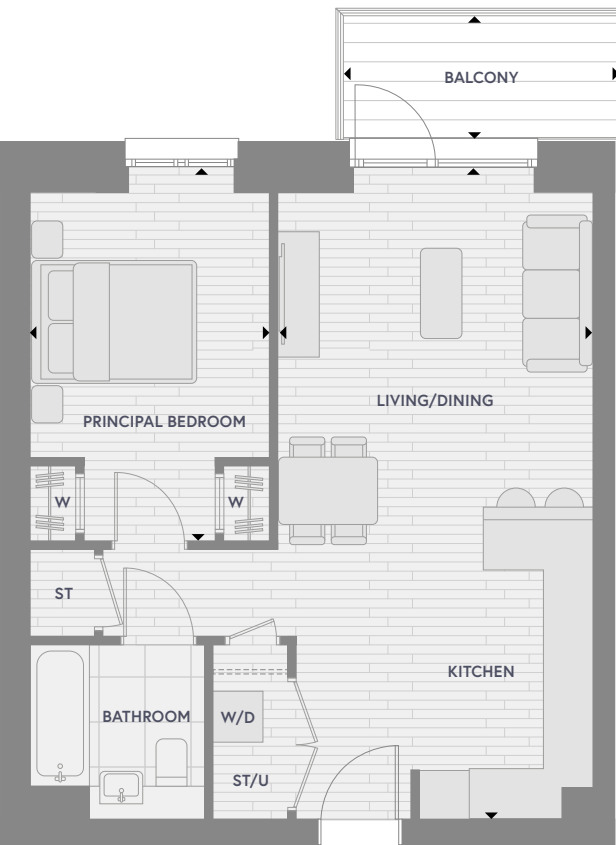


Measurement Points	W	Fitted Wardrobe	W/D	Washer/Dryer	U	Utility	ST	Storage
--------------------	---	-----------------	-----	--------------	---	---------	----	---------

All areas and dimensions have been taken from architect plans prior to construction therefore whilst the information is believed to be correct its accuracy cannot be guaranteed and does not form part of any contract. They are not intended to be used for carpet sizes or items of furniture. Purchasers must therefore rely on their own inspection to verify any information provided. All dimensions are within + or - 50mm.

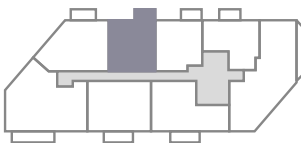
Apartment Type 2F

1 Bedroom



Accommodation

Living/Kitchen	3.8 m x 7.5 m	12'6" x 24'7"
Principal Bedroom	2.8 m x 4.1 m	9'2" x 13'5"
Total Area	51.7 sq m	556.5 sq ft
Balcony	5.1 sq m	54.74 sq ft



Plots

K.07.07 | K.08.07

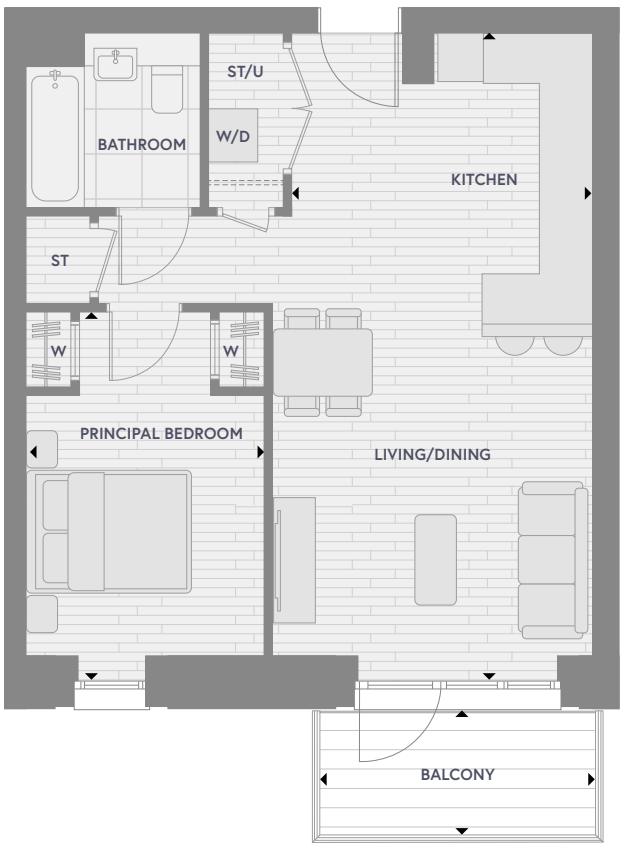


Measurement Points	W	Fitted Wardrobe	W/D	Washer/Dryer	U	Utility	ST	Storage
--------------------	---	-----------------	-----	--------------	---	---------	----	---------

All areas and dimensions have been taken from architect plans prior to construction therefore whilst the information is believed to be correct its accuracy cannot be guaranteed and does not form part of any contract. They are not intended to be used for carpet sizes or items of furniture. Purchasers must therefore rely on their own inspection to verify any information provided. All dimensions are within + or - 50mm.

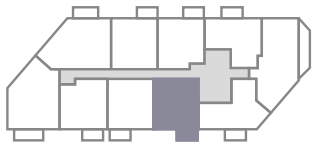
Apartment Type 2G

1 Bedroom



Accommodation

Living/Kitchen	3.5 m x 7.4 m	11'6" x 24'3"
Principal Bedroom	2.8 m x 4.1 m	9'2" x 13'5"
Total Area	51.5 sq m	554.0 sq ft
Balcony	5.1 sq m	54.74 sq ft



Plots

K.02.04		K.03.04
K.04.04		K.05.04

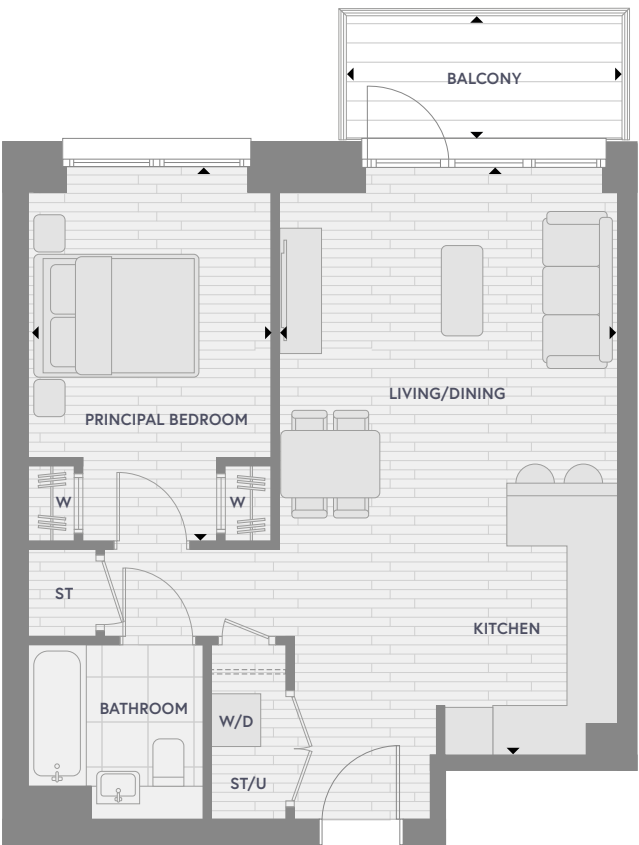


◀ ▶	Measurement Points	W	Fitted Wardrobe	W/D	Washer/Dryer	U	Utility	ST	Storage
-----	--------------------	---	-----------------	-----	--------------	---	---------	----	---------

All areas and dimensions have been taken from architect plans prior to construction therefore whilst the information is believed to be correct its accuracy cannot be guaranteed and does not form part of any contract. They are not intended to be used for carpet sizes or items of furniture. Purchasers must therefore rely on their own inspection to verify any information provided. All dimensions are within + or - 50mm.

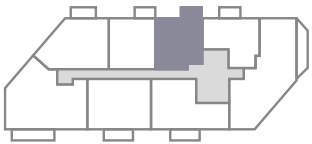
Apartment Type 2H

1 Bedroom



Accommodation

Living/Kitchen	4.0 m x 6.7 m	13'1" x 22'0"
Principal Bedroom	2.9 m x 4.1 m	9'6" x 13'5"
Total Area	52.8 sq m	568.3sq ft
Balcony	5.1 sq m	54.7 sq ft



Plots

K.07.08		K.08.08
---------	--	---------



◀ ▶	Measurement Points	W	Fitted Wardrobe	W/D	Washer/Dryer	U	Utility	ST	Storage
-----	--------------------	---	-----------------	-----	--------------	---	---------	----	---------

All areas and dimensions have been taken from architect plans prior to construction therefore whilst the information is believed to be correct its accuracy cannot be guaranteed and does not form part of any contract. They are not intended to be used for carpet sizes or items of furniture. Purchasers must therefore rely on their own inspection to verify any information provided. All dimensions are within + or - 50mm.

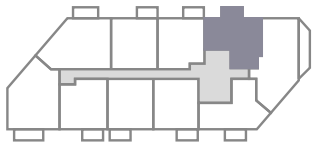
Apartment Type 3

1 Bedroom



Accommodation

Living/Kitchen	5.5 m x 4.4 m	18'1" x 14'5"
Principal Bedroom	2.8 m x 4.0 m	9'2" x 13'2"
Total Area	50.8 sq m	546.8 sq ft
Balcony	5.1 sq m	54.7 sq ft



Plots

K.02.01	K.03.01
K.04.01	K.05.01
K.06.01	



Measurement Points	W	Fitted Wardrobe	W/D	Washer/Dryer	U	Utility	ST	Storage
--------------------	---	-----------------	-----	--------------	---	---------	----	---------

All areas and dimensions have been taken from architect plans prior to construction therefore whilst the information is believed to be correct its accuracy cannot be guaranteed and does not form part of any contract. They are not intended to be used for carpet sizes or items of furniture. Purchasers must therefore rely on their own inspection to verify any information provided. All dimensions are within + or - 50mm.

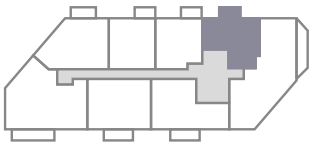
Apartment Type 3A

1 Bedroom



Accommodation

Living/Kitchen	5.6 m x 4.4 m	18'4½" x 14'5"
Principal Bedroom	2.8 m x 4.0 m	9'2" x 13'1"
Total Area	51.0sq m	549.0 sq ft
Balcony	5.1 sq m	54.7 sq ft



Plots

K.07.01	K.08.01
---------	---------



Measurement Points	W	Fitted Wardrobe	W/D	Washer/Dryer	U	Utility	ST	Storage
--------------------	---	-----------------	-----	--------------	---	---------	----	---------

All areas and dimensions have been taken from architect plans prior to construction therefore whilst the information is believed to be correct its accuracy cannot be guaranteed and does not form part of any contract. They are not intended to be used for carpet sizes or items of furniture. Purchasers must therefore rely on their own inspection to verify any information provided. All dimensions are within + or - 50mm.

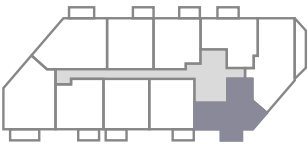
Apartment Type 4

1 Bedroom



Accommodation

Living/Kitchen	3.8 m x 7.6 m	12'5" x 25'1"
Principal Bedroom	3.8 m x 3.1 m	12'5" x 10'0"
Total Area	50.9 sq m	547.9 sq ft
Balcony	5.1 sq m	54.7 sq ft



Plots

K.02.03		K.03.03
K.04.03		K.05.03



▶ ▶	Measurement Points	W	Fitted Wardrobe	W/D	Washer/Dryer	U	Utility	ST	Storage
-----	--------------------	---	-----------------	-----	--------------	---	---------	----	---------

All areas and dimensions have been taken from architect plans prior to construction therefore whilst the information is believed to be correct its accuracy cannot be guaranteed and does not form part of any contract. They are not intended to be used for carpet sizes or items of furniture. Purchasers must therefore rely on their own inspection to verify any information provided. All dimensions are within + or - 50mm.

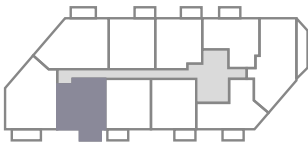
Apartment Type 5

1 Bedroom



Accommodation

Living/Kitchen	3.3 m x 7.4 m	10'10" x 24'3"
Principal Bedroom	3.5 m x 3.2 m	11'6" x 10'6"
Total Area	51.1 sq m	550.0 sq ft
Balcony	5.1 sq m	54.7 sq ft



Plots

K.02.06		K.03.06
K.04.06		K.05.06

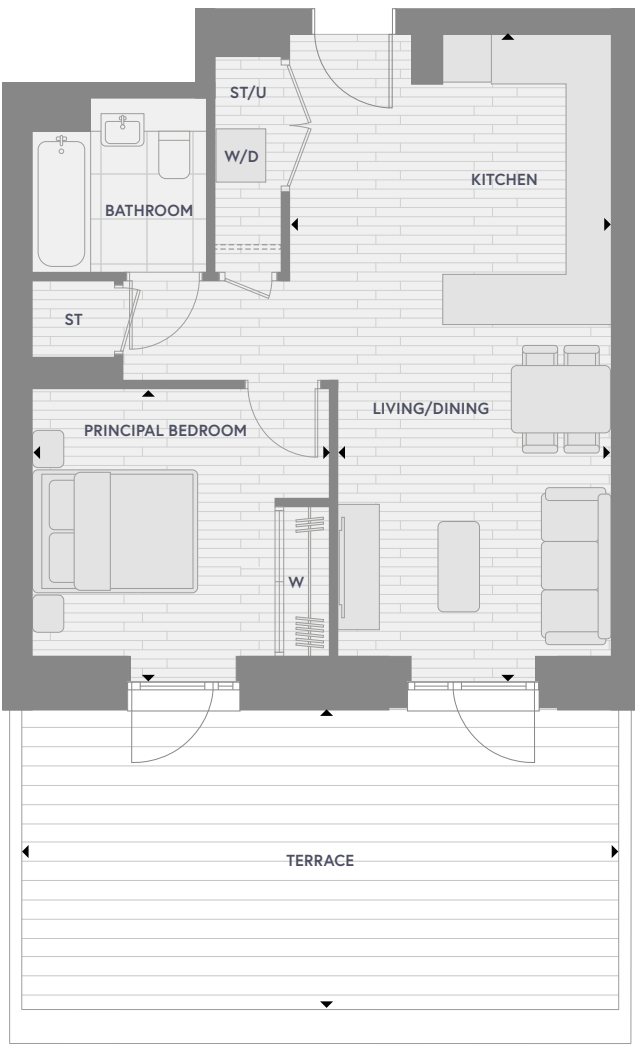


▶ ▶	Measurement Points	W	Fitted Wardrobe	W/D	Washer/Dryer	U	Utility	ST	Storage
-----	--------------------	---	-----------------	-----	--------------	---	---------	----	---------

All areas and dimensions have been taken from architect plans prior to construction therefore whilst the information is believed to be correct its accuracy cannot be guaranteed and does not form part of any contract. They are not intended to be used for carpet sizes or items of furniture. Purchasers must therefore rely on their own inspection to verify any information provided. All dimensions are within + or - 50mm.

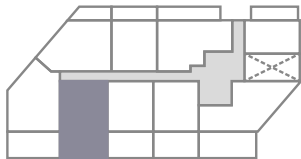
Apartment Type 5A

1 Bedroom



Accommodation

Living/Kitchen	3.3 m x 7.4 m	10'10" x 24'3"
Principal Bedroom	3.5 m x 3.2 m	11'6" x 10'6"
Total Area	51.2sq m	551.1 sq ft
Terrace	27.3 sq m	294.0 sq ft



Plots

K.01.05



Measurement Points	W	Fitted Wardrobe	W/D	Washer/Dryer	U	Utility	ST	Storage
--------------------	---	-----------------	-----	--------------	---	---------	----	---------

All areas and dimensions have been taken from architect plans prior to construction therefore whilst the information is believed to be correct its accuracy cannot be guaranteed and does not form part of any contract. They are not intended to be used for carpet sizes or items of furniture. Purchasers must therefore rely on their own inspection to verify any information provided. All dimensions are within + or - 50mm.

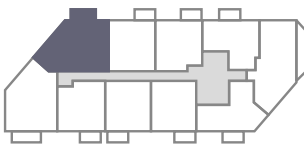
Apartment Type 6

2 Bedroom



Accommodation

Living/Kitchen	3.4 m x 7.5 m	11'2" x 24'7"
Principal Bedroom	4.4 m x 3.7 m	14'5" x 12'2"
Bedroom 2	2.7 m x 4.1 m	8'10" x 13'5"
Total Area	71.2 sq m	766.5 sq ft
Balcony	6.1 sq m	65.66 sq ft



Plots

K.02.08 | K.03.08
K.04.08 | K.05.08
K.06.06

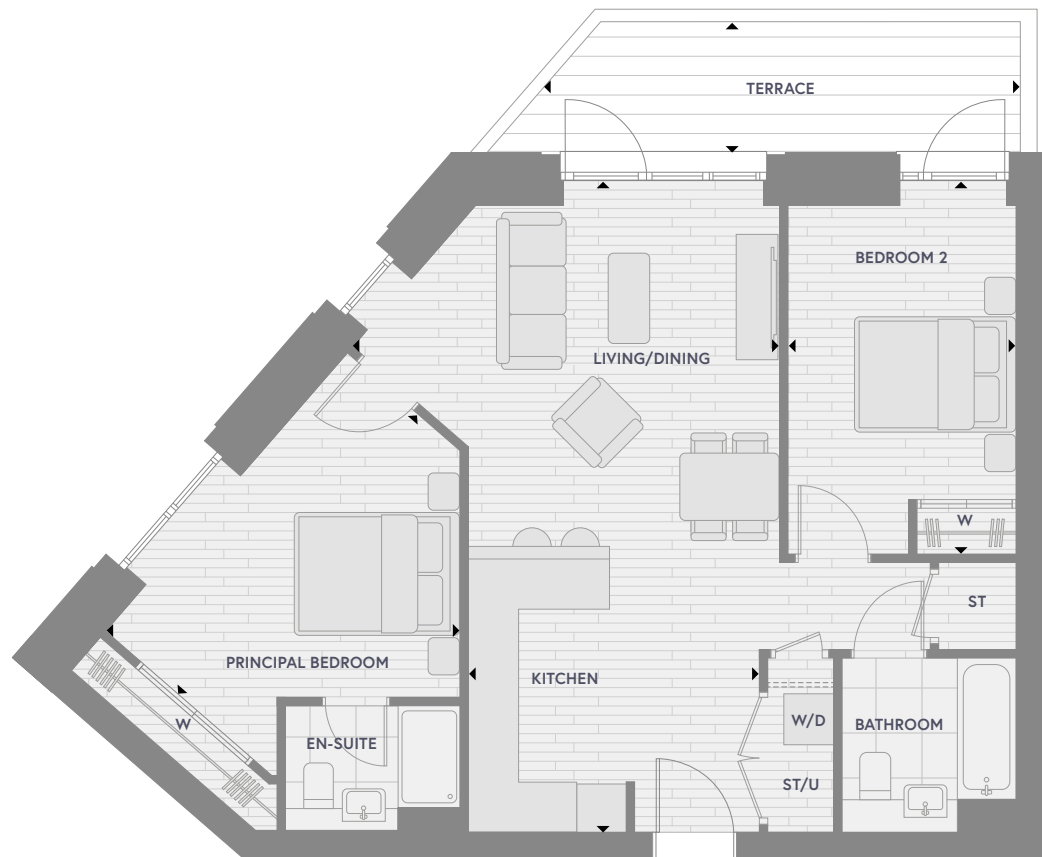


Measurement Points	W	Fitted Wardrobe	W/D	Washer/Dryer	U	Utility	ST	Storage
--------------------	---	-----------------	-----	--------------	---	---------	----	---------

All areas and dimensions have been taken from architect plans prior to construction therefore whilst the information is believed to be correct its accuracy cannot be guaranteed and does not form part of any contract. They are not intended to be used for carpet sizes or items of furniture. Purchasers must therefore rely on their own inspection to verify any information provided. All dimensions are within + or - 50mm.

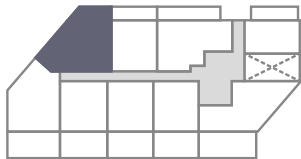
Apartment Type 6A

2 Bedroom



Accommodation

Living/Kitchen	3.4 m x 7.5 m	11'2" x 24'7"
Principal Bedroom	4.2 m x 4.4 m	13'9" x 14'5"
Bedroom 2	2.8 m x 4.2 m	9'2" x 13'9"
Total Area	71.2 sq m	766.4 sq ft
Terrace	9.0 sq m	97.0 sq ft



Plots

K.01.07

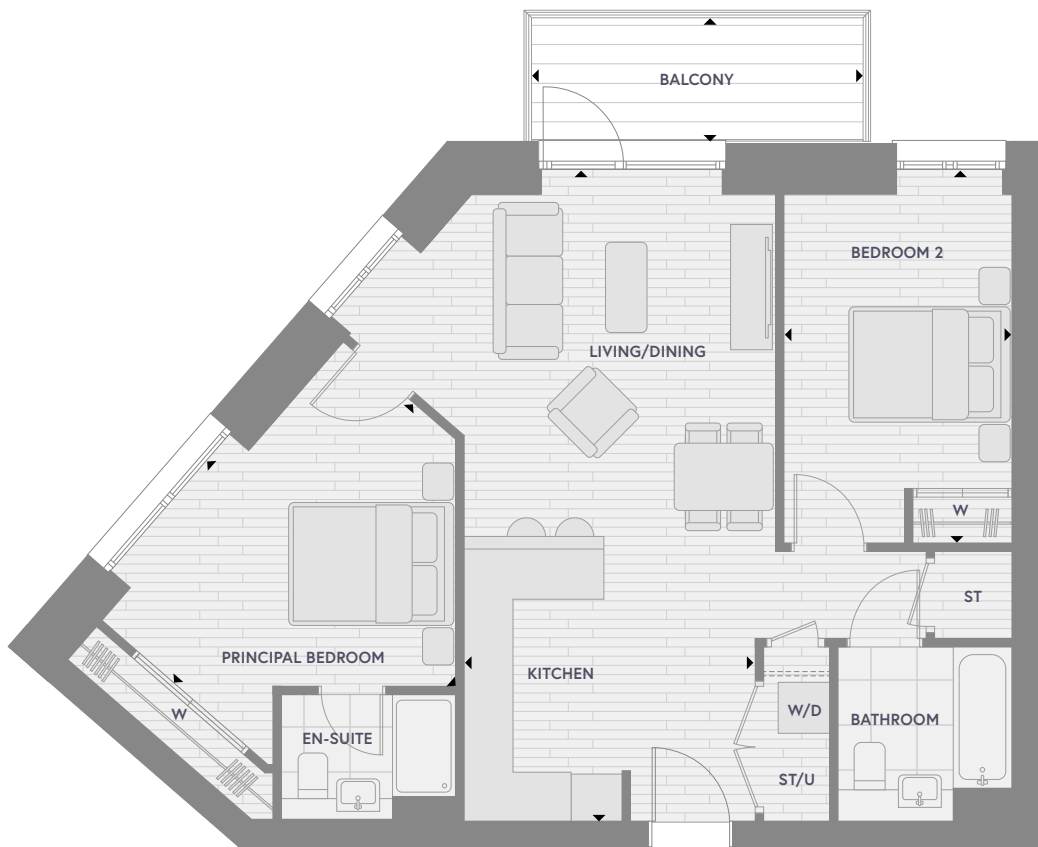


◀ ▶	Measurement Points	W	Fitted Wardrobe	W/D	Washer/Dryer	U	Utility	ST	Storage
-----	--------------------	---	-----------------	-----	--------------	---	---------	----	---------

All areas and dimensions have been taken from architect plans prior to construction therefore whilst the information is believed to be correct its accuracy cannot be guaranteed and does not form part of any contract. They are not intended to be used for carpet sizes or items of furniture. Purchasers must therefore rely on their own inspection to verify any information provided. All dimensions are within + or - 50mm.

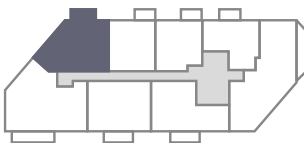
Apartment Type 6B

2 Bedroom



Accommodation

Living/Kitchen	3.4 m x 7.5 m	11'2" x 24'7"
Principal Bedroom	3.7 m x 4.4 m	12'2" x 14'5"
Bedroom 2	2.8 m x 4.1 m	9'2" x 13'5"
Total Area	71.4 sq m	768.5 sq ft
Balcony	6.1 sq m	65.66 sq ft



Plots

K.07.06 | K.08.06

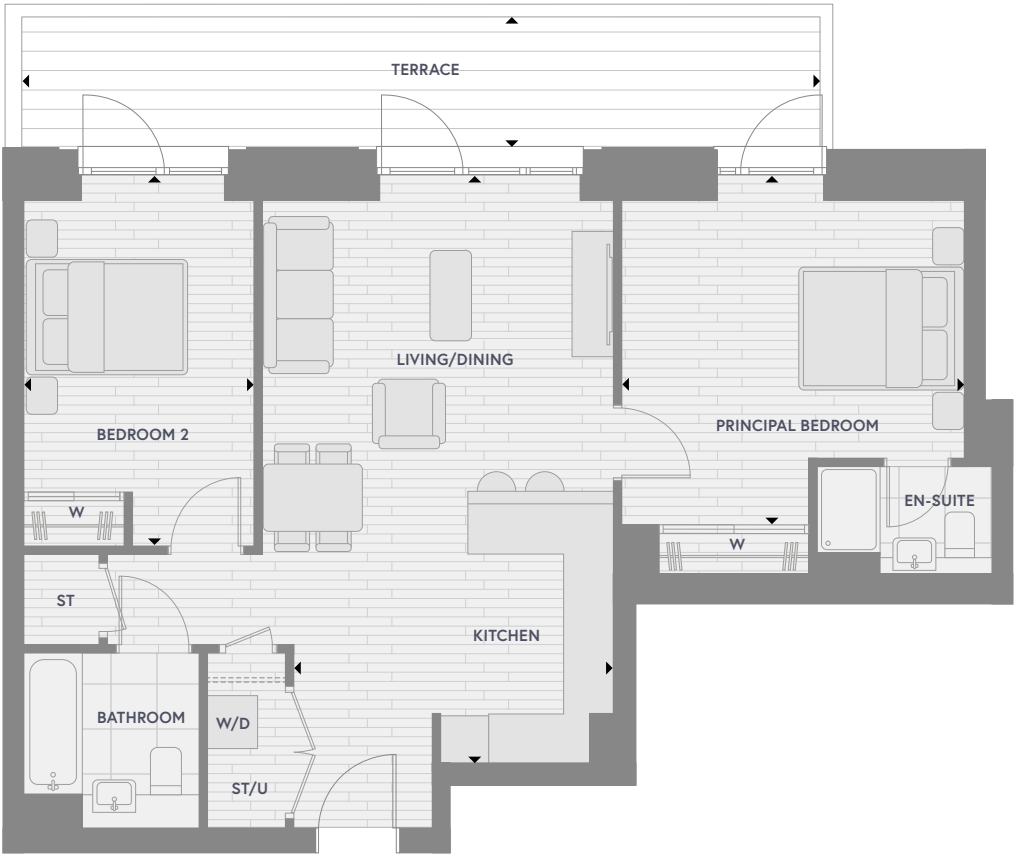


◀ ▶	Measurement Points	W	Fitted Wardrobe	W/D	Washer/Dryer	U	Utility	ST	Storage
-----	--------------------	---	-----------------	-----	--------------	---	---------	----	---------

All areas and dimensions have been taken from architect plans prior to construction therefore whilst the information is believed to be correct its accuracy cannot be guaranteed and does not form part of any contract. They are not intended to be used for carpet sizes or items of furniture. Purchasers must therefore rely on their own inspection to verify any information provided. All dimensions are within + or - 50mm.

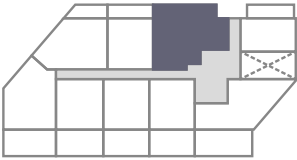
Apartment Type 7

2 Bedroom



Accommodation

Living/Kitchen	3.7 m x 6.7 m	12'2" x 22'0"
Principal Bedroom	4.1 m x 3.8 m	13'5" x 12'6"
Bedroom 2	2.7 m x 4.1 m	8'10" x 13'5"
Total Area	72.0 sq m	774.6 sq ft
Terrace	17.3 sq m	185.9 sq ft



Plots

K.01.09



◀ ▶	Measurement Points	W	Fitted Wardrobe	W/D	Washer/Dryer	U	Utility	ST	Storage
-----	--------------------	---	-----------------	-----	--------------	---	---------	----	---------

All areas and dimensions have been taken from architect plans prior to construction therefore whilst the information is believed to be correct its accuracy cannot be guaranteed and does not form part of any contract. They are not intended to be used for carpet sizes or items of furniture. Purchasers must therefore rely on their own inspection to verify any information provided. All dimensions are within + or - 50mm.

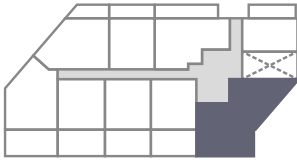
Apartment Type 8

2 Bedroom



Accommodation

Living/Kitchen	6.7 m x 3.7 m	22'0" x 12'2"
Principal Bedroom	3.8 m x 4.6 m	12'6" x 15'1"
Bedroom 2	4.2 m x 4.1 m	13'9" x 13'5"
Total Area	71.2 sq m	766.4 sq ft
Terrace	32.6 sq m	350.9 sq ft



Plots

K.01.02

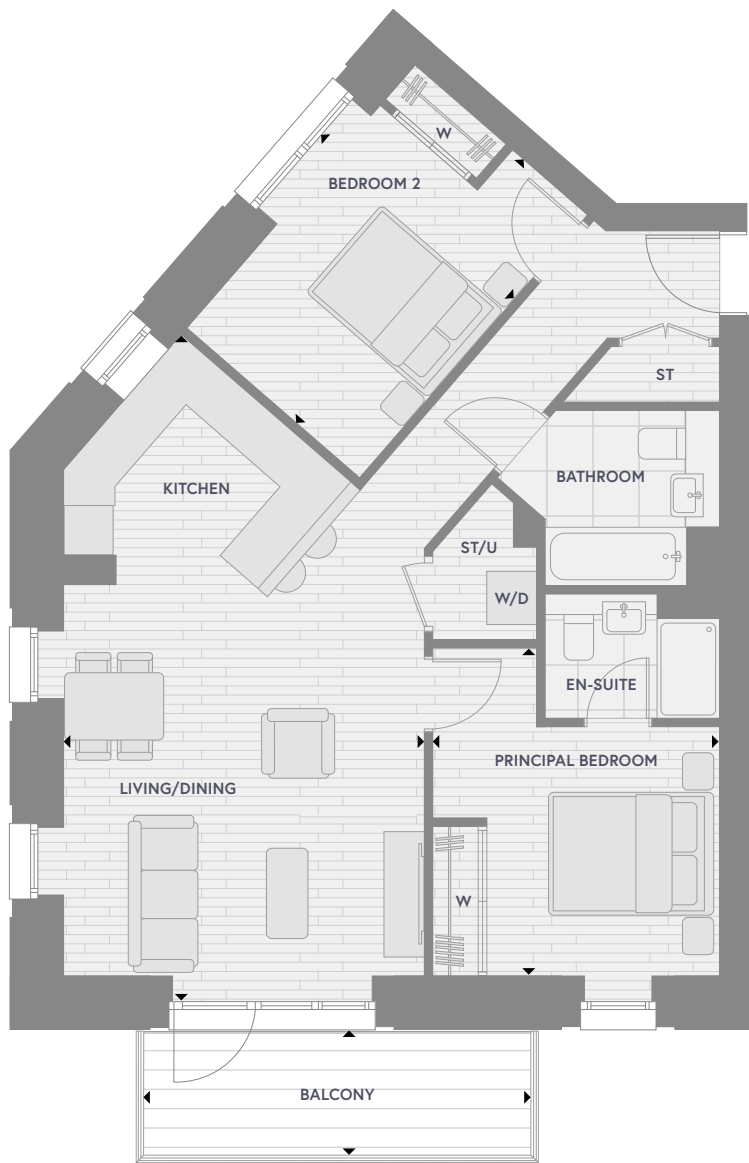


◀ ▶	Measurement Points	W	Fitted Wardrobe	W/D	Washer/Dryer	U	Utility	ST	Storage
-----	--------------------	---	-----------------	-----	--------------	---	---------	----	---------

All areas and dimensions have been taken from architect plans prior to construction therefore whilst the information is believed to be correct its accuracy cannot be guaranteed and does not form part of any contract. They are not intended to be used for carpet sizes or items of furniture. Purchasers must therefore rely on their own inspection to verify any information provided. All dimensions are within + or - 50mm.

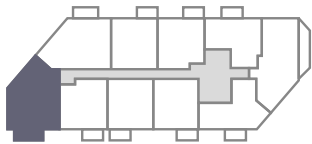
Apartment Type 9

2 Bedroom



Accommodation

Living/Kitchen	4.3 m x 7.7 m	14'1" x 25'3"
Principal Bedroom	3.4 m x 3.9 m	11'2" x 12'10"
Bedroom 2	2.7 m x 4.1 m	8'10" x 13'5"
Total Area	72.2 sq m	777.0 sq ft
Balcony	7.1 sq m	76.7 sq ft



Plots

K.02.07	K.03.07
K.04.07	K.05.07

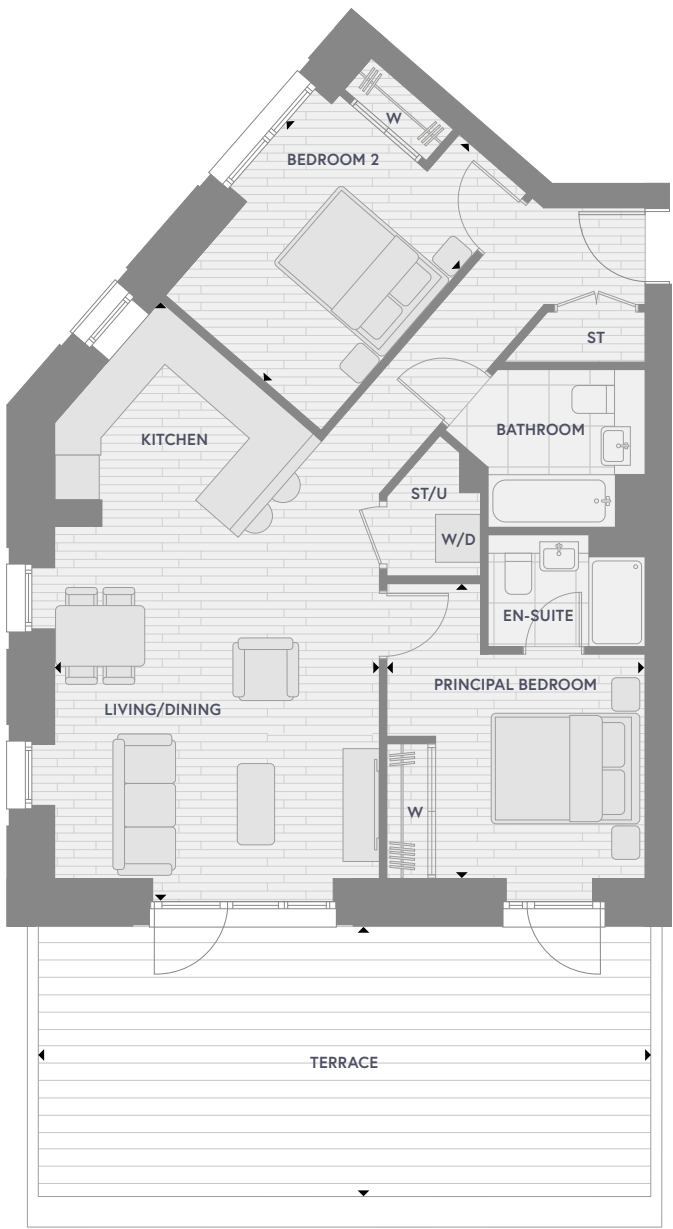


Measurement Points	W	Fitted Wardrobe	W/D	Washer/Dryer	U	Utility	ST	Storage
--------------------	---	-----------------	-----	--------------	---	---------	----	---------

All areas and dimensions have been taken from architect plans prior to construction therefore whilst the information is believed to be correct its accuracy cannot be guaranteed and does not form part of any contract. They are not intended to be used for carpet sizes or items of furniture. Purchasers must therefore rely on their own inspection to verify any information provided. All dimensions are within + or - 50mm.

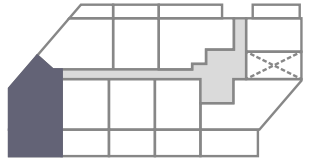
Apartment Type 9A

2 Bedroom



Accommodation

Living/Kitchen	4.3 m x 7.7 m	14'1" x 25'3"
Principal Bedroom	3.4 m x 3.9 m	11'2" x 12'10"
Bedroom 2	2.7 m x 4.1 m	8'10" x 13'5"
Total Area	72.3 sq m	778.5 sq ft
Terrace	31.4 sq m	337.7 sq ft



Plots

K.01.06

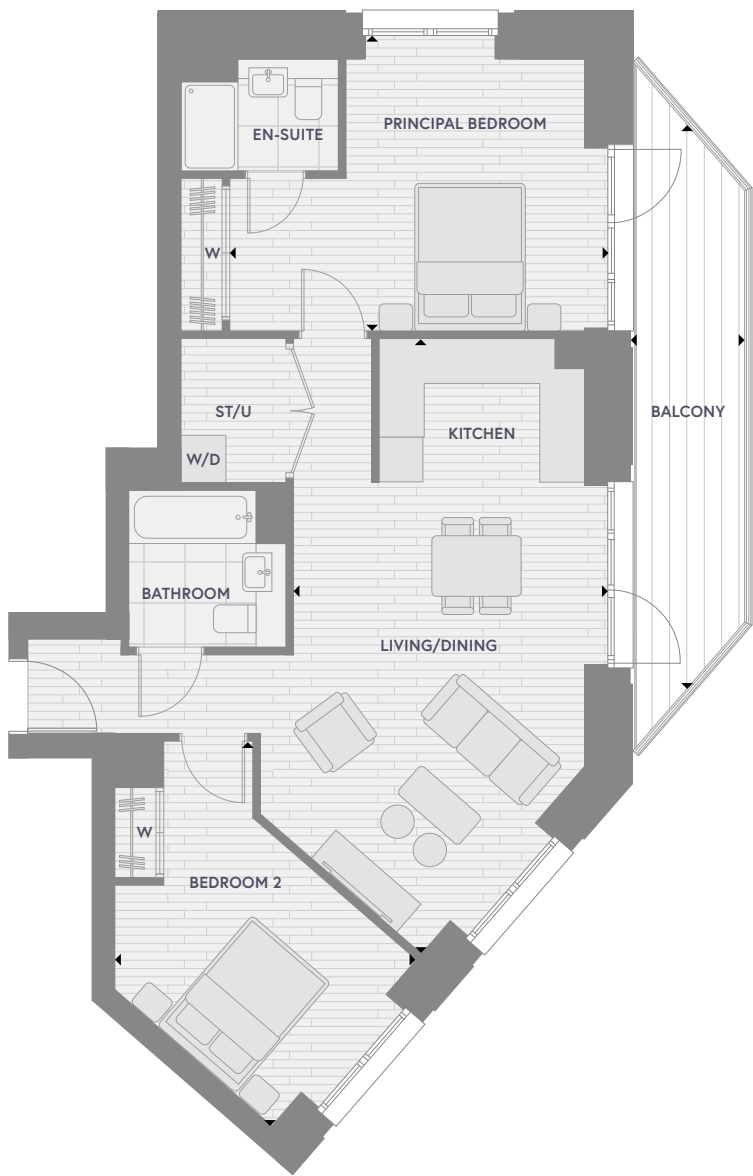


Measurement Points	W	Fitted Wardrobe	W/D	Washer/Dryer	U	Utility	ST	Storage
--------------------	---	-----------------	-----	--------------	---	---------	----	---------

All areas and dimensions have been taken from architect plans prior to construction therefore whilst the information is believed to be correct its accuracy cannot be guaranteed and does not form part of any contract. They are not intended to be used for carpet sizes or items of furniture. Purchasers must therefore rely on their own inspection to verify any information provided. All dimensions are within + or - 50mm.

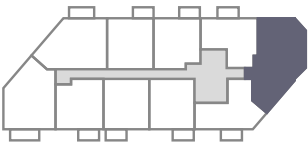
Apartment Type 10

2 Bedroom



Accommodation

Living/Kitchen	3.8 m x 8.2 m	12'6" x 26'11"
Principal Bedroom	4.7 m x 3.6 m	15'5" x 11'10"
Bedroom 2	4.0 m x 5.1 m	13'1" x 16'9"
Total Area	75.6 sq m	813.8sq ft
Balcony	11.5 sq m	123.6 sq ft



Plots

K.02.02	K.03.02
K.04.02	K.05.02



◀ ▶	Measurement Points	W	Fitted Wardrobe	W/D	Washer/Dryer	U	Utility	ST	Storage
-----	--------------------	---	-----------------	-----	--------------	---	---------	----	---------

All areas and dimensions have been taken from architect plans prior to construction therefore whilst the information is believed to be correct its accuracy cannot be guaranteed and does not form part of any contract. They are not intended to be used for carpet sizes or items of furniture. Purchasers must therefore rely on their own inspection to verify any information provided. All dimensions are within + or - 50mm.

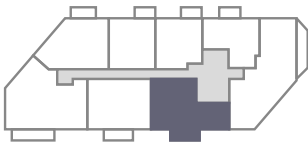
Apartment Type 11

2 Bedroom



Accommodation

Living/Kitchen	3.6 m x 7.5 m	11'10" x 24'7"
Principal Bedroom	3.2 m x 3.8 m	10'6" x 12'6"
Bedroom 2	2.8 m x 4.1 m	9'2" x 13'5"
Total Area	71.0 sq m	764.2 sq ft
Balcony	7.1 sq m	76.7 sq ft



Plots

K.06.03



◀ ▶	Measurement Points	W	Fitted Wardrobe	W/D	Washer/Dryer	U	Utility	ST	Storage
-----	--------------------	---	-----------------	-----	--------------	---	---------	----	---------

All areas and dimensions have been taken from architect plans prior to construction therefore whilst the information is believed to be correct its accuracy cannot be guaranteed and does not form part of any contract. They are not intended to be used for carpet sizes or items of furniture. Purchasers must therefore rely on their own inspection to verify any information provided. All dimensions are within + or - 50mm.

Apartment Type 11A

2 Bedroom



Accommodation

Living/Kitchen	4.1 m x 7.4 m	13'5" x 24'3"
Principal Bedroom	4.7 m x 3.8 m	15'5" x 12'6"
Bedroom 2	2.8 m x 4.1 m	9'2" x 13'5"
Total Area	71.4 sq m	768.5 sq ft
Balcony	7.1 sq m	76.7 sq ft



Plots

K.07.03 | K.08.03



◀ ▶	Measurement Points	W	Fitted Wardrobe	W/D	Washer/Dryer	U	Utility	ST	Storage
-----	--------------------	---	-----------------	-----	--------------	---	---------	----	---------

All areas and dimensions have been taken from architect plans prior to construction therefore whilst the information is believed to be correct its accuracy cannot be guaranteed and does not form part of any contract. They are not intended to be used for carpet sizes or items of furniture. Purchasers must therefore rely on their own inspection to verify any information provided. All dimensions are within + or - 50mm.

Apartment Type 12

2 Bedroom



Accommodation

Living/Kitchen	3.8 m x 7.4 m	12'6½" x 24'3"
Principal Bedroom	2.7 m x 5.8 m	8'10" x 19'0"
Bedroom 2	2.7 m x 4.1 m	8'10" x 13'5"
Total Area	72.5 sq m	780.4 sq ft
Balcony	7.1 sq m	76.7 sq ft



Plots

K.06.04



◀ ▶	Measurement Points	W	Fitted Wardrobe	W/D	Washer/Dryer	U	Utility	ST	Storage
-----	--------------------	---	-----------------	-----	--------------	---	---------	----	---------

All areas and dimensions have been taken from architect plans prior to construction therefore whilst the information is believed to be correct its accuracy cannot be guaranteed and does not form part of any contract. They are not intended to be used for carpet sizes or items of furniture. Purchasers must therefore rely on their own inspection to verify any information provided. All dimensions are within + or - 50mm.

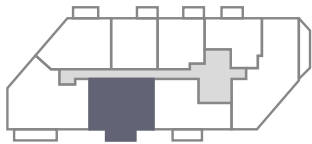
Apartment Type 12A

2 Bedroom



Accommodation

Living/Kitchen	3.8 m x 7.4 m	12'6" x 24'3"
Principal Bedroom	2.7 m x 5.8 m	8'10" x 19'0"
Bedroom 2	2.7 m x 4.1 m	8'10" x 13'5"
Total Area	72.7 sq m	782.5 sq ft
Balcony	7.1 sq m	76.7 sq ft



Plots

K.07.04 | K.08.04



Measurement Points	W	Fitted Wardrobe	W/D	Washer/Dryer	U	Utility	ST	Storage
--------------------	---	-----------------	-----	--------------	---	---------	----	---------

All areas and dimensions have been taken from architect plans prior to construction therefore whilst the information is believed to be correct its accuracy cannot be guaranteed and does not form part of any contract. They are not intended to be used for carpet sizes or items of furniture. Purchasers must therefore rely on their own inspection to verify any information provided. All dimensions are within + or - 50mm.

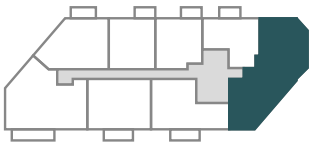
Apartment Type 13

3 Bedroom



Accommodation

Living/Kitchen	5.4 m x 9.3 m	17'9" x 30'6"
Principal Bedroom	5.4 m x 3.4 m	17'9" x 11'2"
Bedroom 2	3.3 m x 3.7 m	10'10" x 12'2"
Bedroom 3	3.4 m x 5.8 m	11'2" x 19'9"
Total Area	109.3 sq m	1176.5 sq ft
Balcony	11.5 sq m	123.6 sq ft



Plots

K.06.02

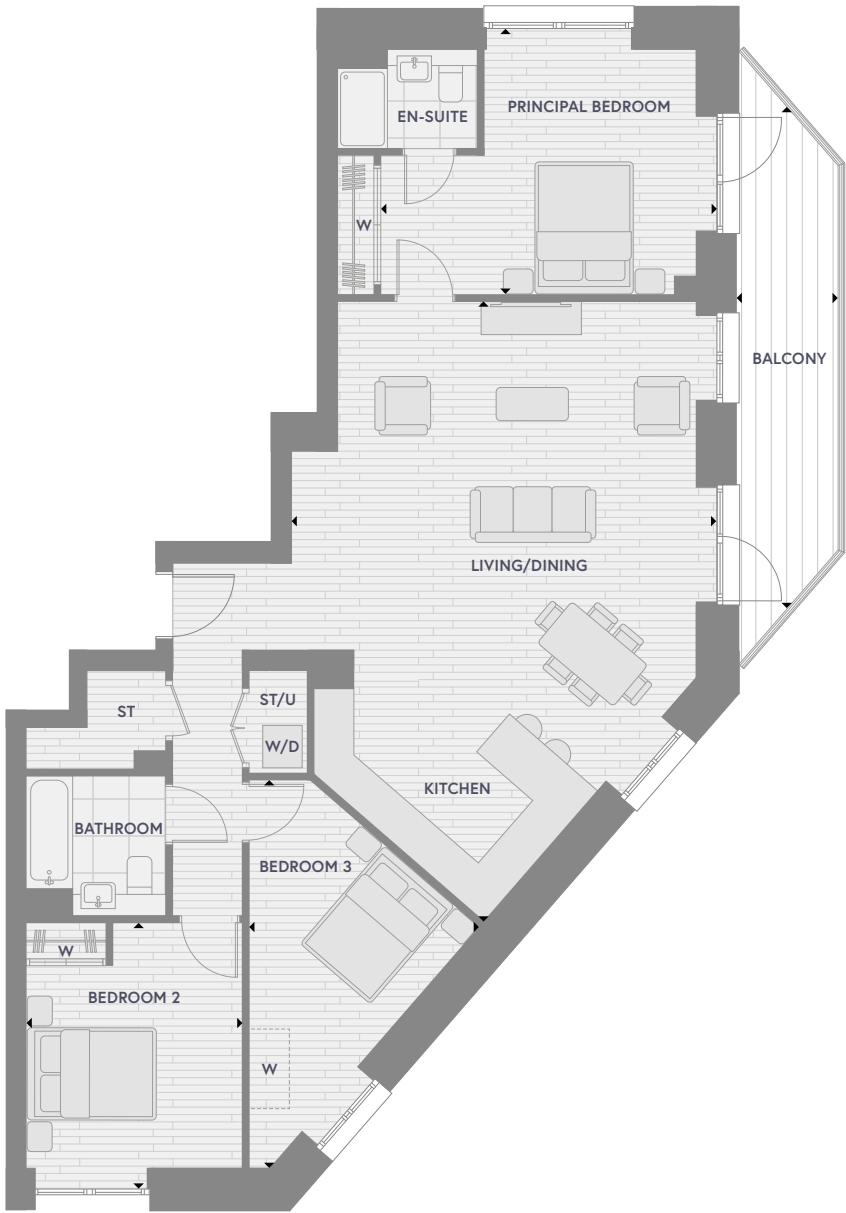


Measurement Points	W	Fitted Wardrobe	W/D	Washer/Dryer	U	Utility	ST	Storage
--------------------	---	-----------------	-----	--------------	---	---------	----	---------

All areas and dimensions have been taken from architect plans prior to construction therefore whilst the information is believed to be correct its accuracy cannot be guaranteed and does not form part of any contract. They are not intended to be used for carpet sizes or items of furniture. Purchasers must therefore rely on their own inspection to verify any information provided. All dimensions are within + or - 50mm.

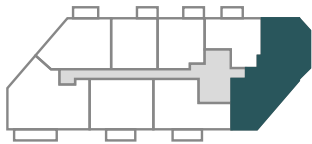
Apartment Type 13A

3 Bedroom



Accommodation

Living/Kitchen	6.0 m x 9.4 m	20'0" x 31'0"
Principal Bedroom	4.7 m x 3.8 m	15'7" x 12'1½"
Bedroom 2	3.2 m x 3.6 m	10'8" x 12'1½"
Bedroom 3	3.5 m x 5.9 m	11'6½" x 19'1"
Total Area	109.1 sq m	1174.3 sq ft
Balcony	11.5 sq m	123.6 sq ft



Plots

K.08.02

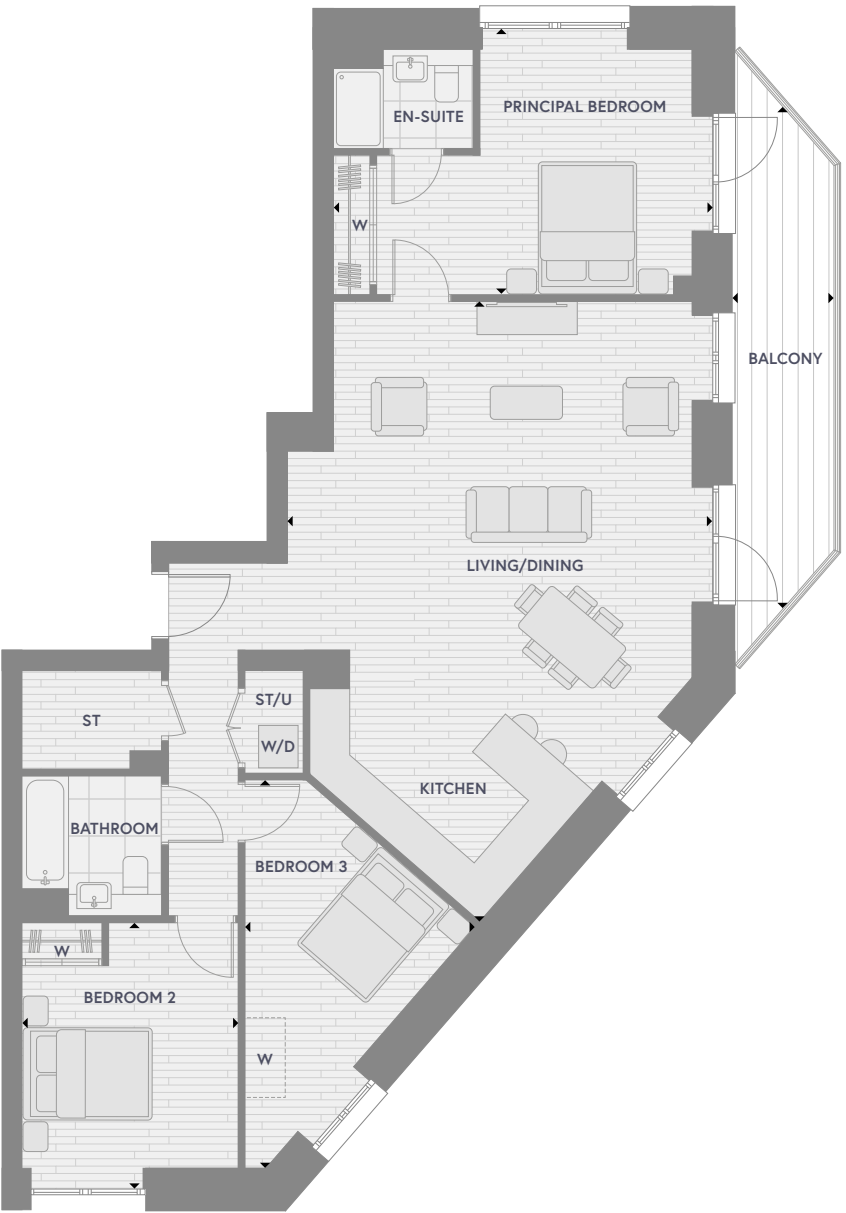


◀ ▶	Measurement Points	W	Fitted Wardrobe	W/D	Washer/Dryer	U	Utility	ST	Storage
-----	--------------------	---	-----------------	-----	--------------	---	---------	----	---------

All areas and dimensions have been taken from architect plans prior to construction therefore whilst the information is believed to be correct its accuracy cannot be guaranteed and does not form part of any contract. They are not intended to be used for carpet sizes or items of furniture. Purchasers must therefore rely on their own inspection to verify any information provided. All dimensions are within + or - 50mm.

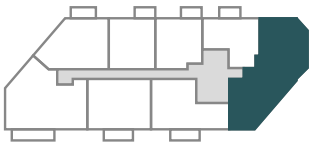
Apartment Type 13B

3 Bedroom



Accommodation

Living/Kitchen	5.4 m x 9.3 m	20'0" x 30'7"
Principal Bedroom	5.4 m x 3.4 m	15'7" x 12'1½"
Bedroom 2	3.3 m x 3.7 m	10'8" x 12'1½"
Bedroom 3	3.4 m x 5.9 m	11'3½" x 19'3"
Total Area	109.9 sq m	1183.0 sq ft
Balcony	11.5 sq m	123.6 sq ft



Plots

K.07.02



◀ ▶	Measurement Points	W	Fitted Wardrobe	W/D	Washer/Dryer	U	Utility	ST	Storage
-----	--------------------	---	-----------------	-----	--------------	---	---------	----	---------

All areas and dimensions have been taken from architect plans prior to construction therefore whilst the information is believed to be correct its accuracy cannot be guaranteed and does not form part of any contract. They are not intended to be used for carpet sizes or items of furniture. Purchasers must therefore rely on their own inspection to verify any information provided. All dimensions are within + or - 50mm.

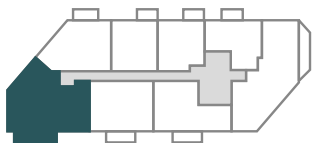
Apartment Type 14

3 Bedroom



Accommodation

Living/Kitchen	9.0 m x 4.5 m	29'8" x 14'10"
Principal Bedroom	3.3 m x 5.2 m	10'10" x 17'1"
Bedroom 2	4.1 m x 3.0 m	13'5" x 9'11"
Bedroom 3	4.1 m x 3.9 m	13'5" x 12'10"
Total Area	103.6 sq m	1115.1 sq ft
Balcony	9.9 sq m	106.2 sq ft



Plots

K.06.05 | K.07.05



▶ ▶	Measurement Points	W	Fitted Wardrobe	W/D	Washer/Dryer	U	Utility	ST	Storage
-----	--------------------	---	-----------------	-----	--------------	---	---------	----	---------

All areas and dimensions have been taken from architect plans prior to construction therefore whilst the information is believed to be correct its accuracy cannot be guaranteed and does not form part of any contract. They are not intended to be used for carpet sizes or items of furniture. Purchasers must therefore rely on their own inspection to verify any information provided. All dimensions are within + or - 50mm.

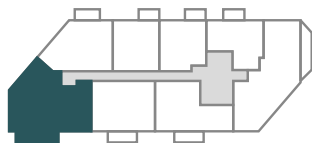
Apartment Type 14B

3 Bedroom



Accommodation

Living/Kitchen	9.0 m x 4.5 m	29'8" x 14'10"
Principal Bedroom	3.3 m x 5.3 m	10'10" x 11'0½"
Bedroom 2	4.2 m x 4.2 m	13'9" x 13'9"
Bedroom 3	4.2 m x 3.9 m	13'9" x 12'10"
Total Area	103.4 sq m	1113.0 sq ft
Balcony	9.9 sq m	106.2 sq ft



Plots

K.08.05



▶ ▶	Measurement Points	W	Fitted Wardrobe	W/D	Washer/Dryer	U	Utility	ST	Storage
-----	--------------------	---	-----------------	-----	--------------	---	---------	----	---------

All areas and dimensions have been taken from architect plans prior to construction therefore whilst the information is believed to be correct its accuracy cannot be guaranteed and does not form part of any contract. They are not intended to be used for carpet sizes or items of furniture. Purchasers must therefore rely on their own inspection to verify any information provided. All dimensions are within + or - 50mm.



Bathroom

Photography depicts Verdo - Kew Bridge Showhome and is indicative only

At Verdo - Kew Bridge you'll
enjoy a luxurious new home that's
breathtakingly beautiful inside and out.

Kitchen

- Contemporary bespoke fitted kitchens
- Composite work surfaces and splash back
- Integrated appliances by Siemens and Bosch
 - Oven
 - Microwave
 - Dishwasher
 - Induction hob
 - Fridge/freezer
- Under-mounted sink with fluted drainer and black mixer tap
- Feature lighting under wall cabinetry

Bathrooms and En-suite Shower Rooms

- Bathroom: Bath with frameless glass bath screen
- En-suite shower room: Shower tray with frameless glass shower screen
- Black thermostatic wall mounted shower/bath mixer control panel, fixed large overhead shower (and handheld shower fitting within bathrooms)
- Ceramic hand basin with black mixer tap
- Wall hung WC with soft close seat and concealed cistern with dual flush
- Black heated towel rail
- Mirrored cabinet with demister function, internal shelving and shaver socket
- Feature lighting under mirrored cabinet
- Large format floor tiles
- Timber effect feature wall above sink and feature wall tiles to wet areas
- Composite vanity top

Utility Cupboard

- Bosch washer/dryer

Interior Finishes

- Engineered timber floor finishes to hallways, kitchen/living areas and bedrooms
- Contemporary fitted wardrobes to all principal bedrooms and second bedrooms, including internal shelf and rail with LED strip lighting
- Black internal door furniture

Electrical Fittings

- Energy efficient downlights throughout
- Connection to Sky Q services
- Media outlets to living area and all bedrooms
- USB charging points to kitchen and all bedrooms
- Telephone outlet to living area

Heating and Water Services

- Heating and hot water provided by communal system with metered water supply
- Zoneable, controllable, concealed heating

Balconies and Terraces

- Well-proportioned balconies and terraces with metal balustrade
- Decking to balconies and paving to terraces

Security and Peace of Mind

- Audio video entry system
- Power and telephone point provided in utility cupboard for wireless intruder alarm to be fitted by the owner
- Mains powered smoke detectors to hallways
- Mains powered heat detectors to kitchens
- Lockable windows
- Monitored CCTV to entrance lobbies, residents' amenities, gardens and gated car parking areas
- 10 year NHBC build warranty
- Sprinkler system

Communal Areas and Residents' Amenities

- Interior designed entrance lobbies
- 24-hour concierge service
- Residents' Lounge, including social and work areas, private dining space and meeting room
- Residents' Media Room
- Residents' Gym
- Landscape architect designed residents' podium gardens
- Secure bicycle storage

Your attention is drawn to the fact that it may not be possible to obtain the products as referred to in the specification. In such cases a similar alternative will be provided. EcoWorld reserve the right to make these changes as required. CGIs are indicative only and not representative of the final product.





Residents' Gym

CGI is indicative only / Not representative of the final product



Residents' Podium Gardens

CGI is indicative only / Not representative of the final product

EcoWorld, Delivering Great New Places for Londoners to Live

From the attention we pay to every last detail of the homes and places we create, to the way we support our developments' communities – at EcoWorld London, we always strive to achieve the highest possible standards. It underlines our belief in offering not just great homes, but a better quality of life.

To us, eco isn't just about being green. While we're mindful of our environmental impact, our goal is to create great places that are truly sustainable – creating communities for buyers and renters that grow and develop. We don't leave when the building work finishes either. We stay involved, ensuring our communities grow and thrive. Our focus on design is just as long term, as important as materials are, we believe design is about far more than the finishes we use. It's about the way a home works.

We continually talk to our customers, seeing how they live to find ways to improve and adapt our approach. Only by really understanding what makes a home can we make our developments all they can be.

EcoWorld London is part of EcoWorld International Berhad (EcoWorld International), a real estate developer listed on the Main Market of Bursa Malaysia Securities Berhad. EcoWorld London is also partly owned by The Willmott Dixon Group. The EcoWorld International Group is managed by its board and management team comprising qualified and experienced individuals, including personnel who were involved in developing some of the most iconic and award-winning developments in Malaysia and the UK.

Awards include Best New Place to Live (London Planning Awards), Development of the Year (RESI awards), Grand Prix Award and Best Regeneration Project (Evening Standard) and The Placemaking Award (2018 Property Awards).

ecoworldlondon.com

ECOWORLD
— LONDON —
CREATING TOMORROW & BEYOND



Community Amenity Space / Aberfeldy Street / Oxbow / CGI is indicative only



V E R D O

KEW BRIDGE

Verdo - Kew Bridge Lionel Road South London TW8 0JA

London

EcoWorld London
25 Victoria Street
London SW1H 0EX
+44 (0)208 066 2255
hello@ecoworldlondon.com

Singapore

EcoWorld Singapore Office
8 Marina View, Asia Square Tower 1
#43-01, Singapore 018960
+65 6235 2525
sg-gallery@ecoworld.my

Kuala Lumpur

EcoWorld International
No. 2 Jalan Hang Tuah,
55100 Kuala Lumpur, Malaysia
+603 2116 2525
ewi@ecoworldinternational.com

For all sales enquiries, please contact:

020 8131 4369

verdo-kewbridge@ecoworldinternational.com

ecoworldlondon.com

ECOWORLD
— LONDON —

CREATING TOMORROW & BEYOND

This brochure and the information contained in it does not form part of any contract, and while reasonable effort has been made to ensure accuracy, this cannot be guaranteed and no representation or warranty is made in that regard. Apartment designs and layouts are indicative only and may change. The specification of the apartments is the anticipated specification as at the date this brochure was prepared, but may be subject to change in accordance with permitted variances under the apartment sale contracts. Computer generated images and photos are indicative only. All sales remain subject to contract. All information regarding prospective commercial or retail tenants represents current intention only, and the final identity of the tenants may change. Fixtures and furnishings including wall panelling and wall dressings shown in Computer Generated Images and photos are not standard or included in sales. Please consult your sales contract for information. Verdo - Kew Bridge and Verdo are marketing names only and will not necessarily form part of the approved postal address. Neither the agents nor any person in their employ has any authority to make or give any representation, warranty or guarantee (whether written or oral) in respect of or in relation to the development (or any parts thereof).

**CONSUMER
CODE FOR
HOME BUILDERS**
www.consumercode.co.uk

tsi
APPROVED CODE
TRADINGSTANDARDS.UK



ECOWORLD

LONDON

CREATING TOMORROW & BEYOND

ecoworldlondon.com