



## Bedding Lookbook

Spring / Summer collection.

furn. wylder  
home + style





# Contents...

furn.  
home + style

ALCHEMY	3
EIVISSA	5
MARULA	7
FRIEZE	9
TAORMINA	11
HUERTA	11
D'AZURE	15
ALENTEJO - Citrus	17
ALENTEJO - Ocean	19

ALBERA	21
PASSIFLORA	23

wylder  
NATURE



LAUCALA	25
---------	----

wylder  
TROPICS



## ALCHEMY

Alchemy is a story of a contemporary fantasy, combining elements from travel, mythology and folklore to create an effervescent bed set that allows you to escape from reality and enter into a dream like parallel universe.

- 68 pick polycotton 50/50
- OEKO-TEX Certified
- PVC Bag with Card Insert
- Single / Double / KingSize / Super King

Launching  
SS24!



Front



Reverse









## EIVISSA

Wandering through the Dalt Vila at sunset, shades of pink, orange and purple cast luminescent shadows on the old town walls, keep your eyes peeled for a loose wild panther or two roaming around as you watch the glowing sun sink into the Mediterranean sea.

- 68 pick polycotton 50/50
- OEKO-TEX Certified
- PVC Bag with Card Insert
- Single / Double / KingSize / Super King

Launching  
SS24!



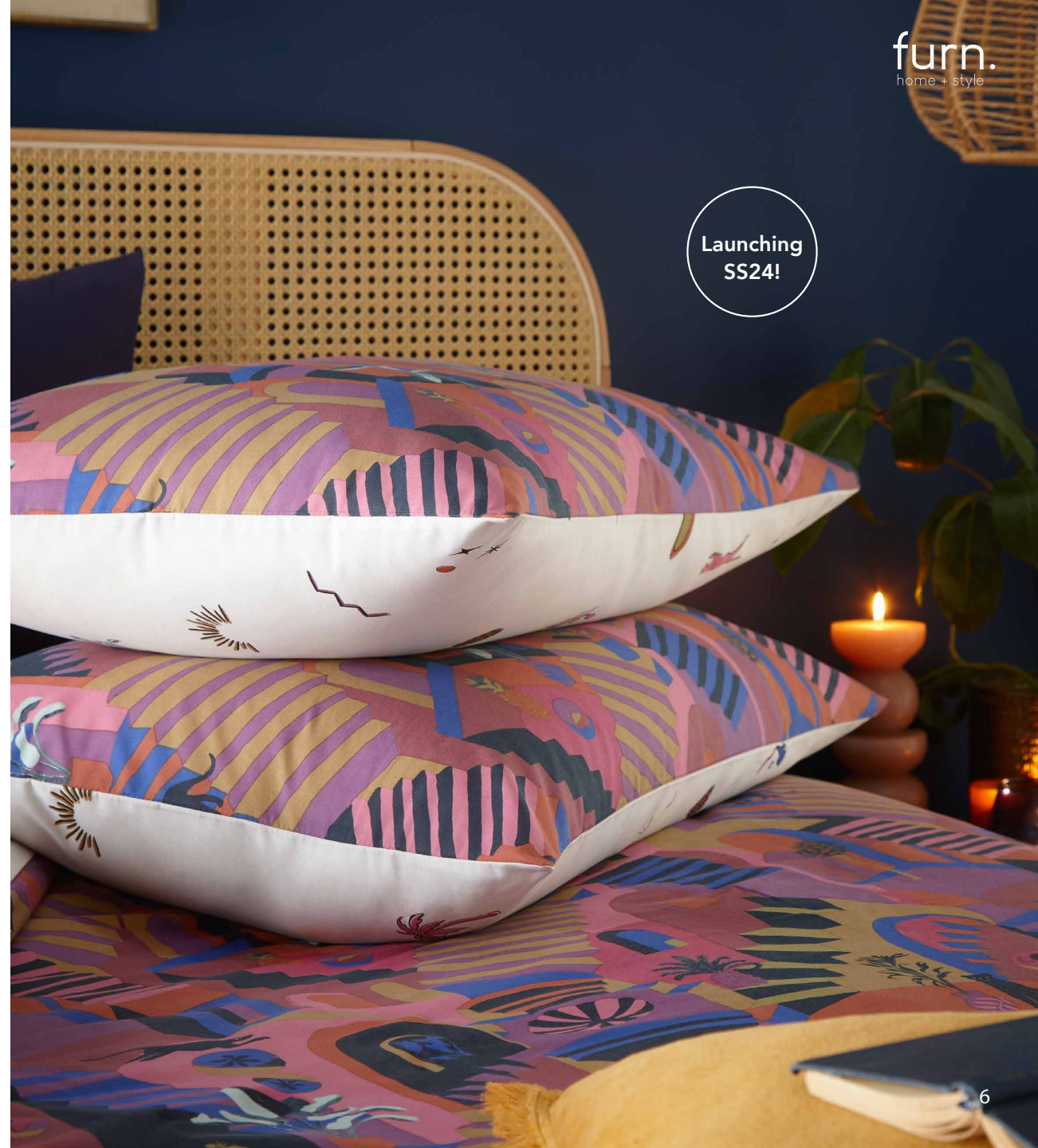
Front



Reverse







Launching  
SS24!





## MARULA

Under the branches of the fruit tree, the playful vibe of Marula is energising in colour but truly feels like a lazy day in paradise. Featuring cut-out silhouettes of exotic birds, botanicals and finished with an abstract striped reverse of cascading foliage.

- 68 pick polycotton 50/50
- OEKO-TEX Certified
- PVC Bag with Card Insert
- Single / Double / KingSize / Super King

Launching  
SS24!

Front



Reverse





Launching  
SS24!



furn.  
home + style



## FRIEZE

Imagine dipping your toes into the cobalt waters of the Aegaeon sea, looking up to see perfect white villas dotted in the hillside, palms swaying in the breeze, tiny shells washed up on to a crisp white sand. Frieze captures daydreams of Greek island hopping.

- 68 pick polycotton 50/50
- OEKO-TEX Certified
- PVC Bag with Card Insert
- Single / Double / KingSize / Super King

Launching  
SS24!



Front



Reverse







Launching  
SS24!



# TAORMINA

Inspired by the famous moor's heads found in Sicily. These maiolica ceramics tell a romantic story and are surrounded by beautiful abundant florals featured in this tale of love and war...

- 68 pick polycotton 50/50
- OEKO-TEX Certified
- PVC Bag with Card Insert
- Single / Double / KingSize / Super King

Launching  
SS24!



Front



Reverse











## HUERTA

Summer sun hits the iridescent wings of a hummingbird, with a soft warmth the south american fruit and vegetable orchard is full of life and curious colour.

- 68 pick polycotton 50/50
- OKEO-TEX Certified
- PVC Bag with Card Insert
- Single / Double / KingSize / Super King

Launching  
SS24!

Front



Reverse









## D'AZURE

A cover of wind swept mediterranean pines. The Sirocco south warm breeze swirls and creates movement amongst these characterful branches. A truly reversible design in unique and tranquil colours.

- 68 pick polycotton 50/50
- OEKO-TEX Certified
- PVC Bag with Card Insert
- Single / Double / KingSize / Super King

Launching  
SS24!



Front



Reverse









## ALENTEJO - Citrus

A hand-painted pattern of florals and birds in watercolour tones. Add Mediterranean flair to your home; evocative of Portuguese potteries with its stylised motifs and vivid colour against clean, crisp white.

- 68 pick polycotton 50/50
- OKEO-TEX Certified
- PVC Bag with Card Insert
- Single / Double / KingSize / Super King

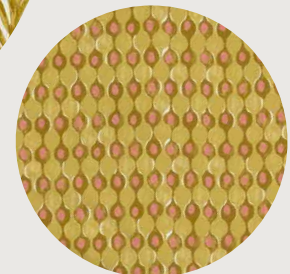
Launching  
SS24!



Front



Reverse







Launching  
SS24!



## ALENTEJO - Ocean

A hand-painted pattern of florals and birds in watercolour tones. Add Mediterranean flair to your home; evocative of Portuguese potteries with its stylised motifs and vivid colour against clean, crisp white.

- 68 pick polycotton 50/50
- OEKO-TEX Certified
- PVC Bag with Card Insert
- Single / Double / KingSize / Super King

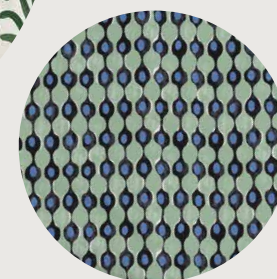
Launching  
SS24!



Front



Reverse











## ALBERA



**wylder**  
NATURE

Inspired by British heritage prints Albera is a linear floral design, hand painted in our studio, it captures an English garden in summertime. As the sun sets, the silhouettes of the pretty flora are framed against a vivid sky.

- Cotton rich slub 60/40
- OEKO-TEX Certified
- PVC Bag with Card Insert
- Single / Double / KingSize / Super King

Launching  
SS24!

Front



Reverse











## PASSIFLORA



**wylder**  
NATURE

Passion flowers trail quirkily up against a peach ground. Passiflora offers a spontaneous number of flower heads with a creature like feel. They are elegant individual flowers dancing through the vines.

- Cotton rich slub 60/40
- OKEO-TEX Certified
- PVC Bag with Card Insert
- Single / Double / KingSize / Super King

Launching  
SS24!

Front



Reverse











## LAUCALA



wylder  
TROPICS

Hazy days and hot nights come together in this bold bedset, paired with a luxe bohemian interior, Laucala is the perfect print to bring the holiday into the home.

- 68 pick polycotton 50/50
- OEKO-TEX Certified
- PVC Bag with Card Insert
- Single / Double / KingSize / Super King

Launching  
SS24!

Front



Reverse









