

Inpatient and Community Mental Health

For more than 6 consecutive years, the NHS Benchmarking Network has been successful in providing Mental Health providers in England and Wales with quality and performance data that informs future research, national policies and service transformation. The evidence often forms the basis of discussion during CQC visits and RCPsych accreditation and helps enable useful dialogue between Trusts and commissioners on mental health performance and commissioning priorities.

The 2018 project was the largest ever, with 100% of English Mental Health Trusts and Welsh University Health Boards and representation from Scotland, Northern Ireland, the Channel Islands and the Independent Sector.



A great range of presentations and a chance to see the bigger picture. One of the best and most interesting NHSBN conferences I've attended."

2018 Mental Health Conference feedback

Mental Health 2018 Key Findings

Bed numbers 19.2 Adult Acute beds per 100,00 population (age 16-64)	Bed occupancy 94% excluding leave in Adult Acute beds	Patient profile 63% of all occupied bed days are for Psychosis
Mental Health Act 37% of admissions to Adult Acute wards are compulsory detentions	Length of stay 31 days ALOS in Adult Acute wards	Bank and Agency 23% of pay costs on Adult Acute wards are for bank and agency staff
Community caseloads 1,598 people are on community caseloads per 100,000 population (age 16+)	Community contacts 30,817 community contacts per 100,000 population (age 16+)	Patient satisfaction 88% "Friends and Family Test" patient satisfaction score

The NHS Benchmarking Network has an active membership spanning the four UK home countries. We deliver unique and timely intelligence on NHS service provision. The Network projects are a key source of accurate and informative comparative data for strategic planning and service improvement programmes.

NHS Five Year Forward View and Long Term Plan

Mental Health is central to the aspiration of service development strategies in all four UK countries. Our mental health work programme fully supports the direction of these strategies and provides key intelligence and insight.

Highlights from 2018 include:

- Data from 2017/18 shows a broad stabilisation in capacity for Adult services although bed reductions continue to take place in Older People's care. The overall level of change reported since 2011/12 is a 17% reduction in adult acute beds and a 40% reduction in older adult beds. The reduction in bed numbers has contributed to an overall decline in admission rates with 15% fewer adult acute admissions this year than in 2011/12.
- Each year our benchmarking results reaffirm the position that most service users receive their care in the community setting. In 2017/18 around 700,000 adults were supported by specialist community mental health teams across the UK.
- Waiting times for community-based mental health care are again similar to those for NHS physical healthcare. Around 90% of service users requiring community care start treatment within 18 weeks of referral.
- A single Adult Acute inpatient bed has an opportunity cost equivalent to supporting 42 patients on community team caseloads.
- Analysis of service quality metrics reveals a gradually improving position across most providers. Data from the Friends and Family test in England confirms that 88% of service users say they would recommend services to their friends and family.



The presentations were all excellent, the networking was extremely useful and the organisation perfect as ever."

CAMHS Conference feedback, 2018

Benchmarking Child and Adolescent Mental Health Services (CAMHS)

The CAMHS benchmarking project allows participants to understand the relationship between demand and capacity and features a full range of metrics including new areas on Autistic Spectrum Disorder pathways and time series profiling which shows the direction of travel for CAMHS on key measures including referrals, caseloads, waiting times and workforce size. The project highlights current performance and pressure in both community CAMHS and inpatient services and is the most comprehensive dataset available on CAMHS provision in the UK.

Learning Disabilities

2018 was the fourth iteration of the NHS Benchmarking Network's Learning Disabilities project and the first year of a collaboration with NHS Improvement to run a parallel project comparing delivery of the NHS Improvement Learning Disabilities Improvement Standards, published July 2018.

Open to specialist providers, participants now have a 360 degree view of their services, providing insight to support operational service improvement, and strategic development at a senior level. The NHS Benchmarking Network project compares the main service portfolios of specialist LD providers and quantifies the nature and shape of services provided and the NHS Improvement project focuses on organisational governance, service quality, patient and staff views of service delivery.

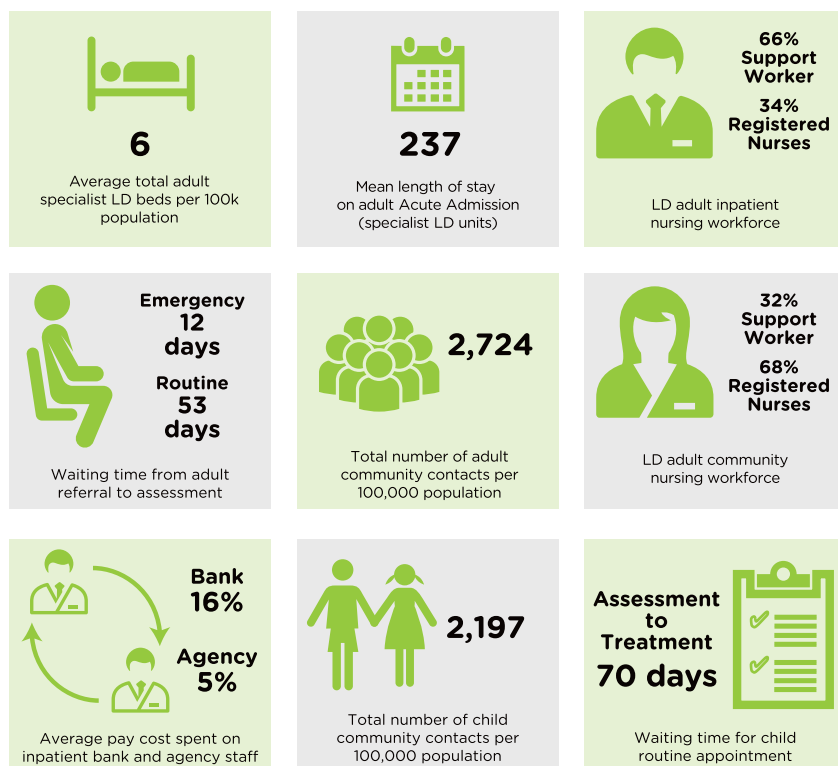
Highlights from CAMHS 2018 includes:

- Within community CAMHS, sustained increases in demand have been demonstrated through increased referral rates which have reached their highest ever level this year. Referral acceptance rates have also increased, along with conversion rates for young people who subsequently enter treatment. However, although increased capacity has been demonstrated, demand continues to outstrip supply with increases in young people on waiting lists to access CAMHS and waiting times longer than the previous year.
- Investment in the CAMHS workforce is clear, and the community workforce grew by 7%. Additional staff are now in post and a record number of contacts were delivered in 2017/18.
- The inpatient CAMHS workforce has grown marginally this year after several years at a steady state. There continue to be discussion points about the skill mix of staff in the inpatient setting, in particular the seniority of nurses and the range of therapeutic staff compared to community CAMHS.

“A really helpful overview of CAMHS benchmarking. Great to hear about the emerging international work and the neighbourhood focus from Glasgow. Some great opportunities for changing practice and learning.”

CAMHS Conference feedback, 2018

Learning Disabilities 2018 Findings



As a member of the NHS Benchmarking Network, and participant in the benchmarking projects, you can access:

- An interactive toolkit, allowing you to benchmark your service across hundreds of metrics.
- A bespoke report outlining key metrics, and highlighting your reported positions.
- A high-level report outlining key messages nationally.
- A good practice compendium of information supplied by member participants.
- Free attendance at annual conferences, accessing presentations on key project findings, from national policy leads and members.
- Good practice case studies on how members use the benchmarking to improve service delivery.

Member organisations can also access a full library of historic project content covering the most material NHS activities delivered by commissioners and providers.



Contact Us

Project information contact – zoe.morris@nhs.net (CAMHS, MH), jessica.walsh1@nhs.net (LD)

Network enquiries – enquiries@nhsbenchmarking.nhs.uk

Website – www.nhsbenchmarking.nhs.uk

Twitter [@NHSBenchmarking](https://twitter.com/NHSBenchmarking)

LinkedIn www.linkedin.com/groups/4853395