

# Board of Directors

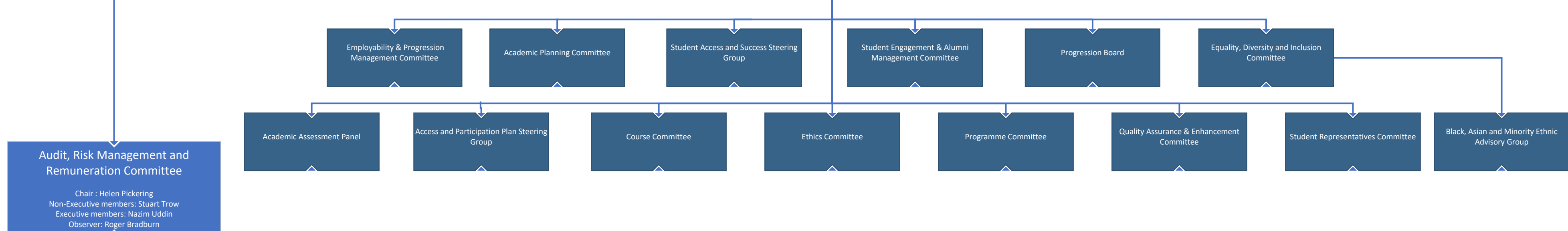
Directors: Ahmad Islam, Shiqiq Islam, Nasim Uddin, Sarah Jo Lovelady, Sarah Jo Lovelady  
Principal: Roger Bradburn

## Board of Governance

Chair: Ayesha Bari  
Non-Executive members: Dr. Shauful Islam, Sarah Ryan, Gill Rayche Helen Pickering, Sarah Jo Lovelady, Stuart Trow, Elizabeth Omoroje, Linda Felton  
Executive members: Roger Bradburn, Ahmad Islam, Shiqiq Islam, Nasim Uddin, Linda Felton, Elizabeth Omoroje, David Douglas (Observer)

## Academic Board

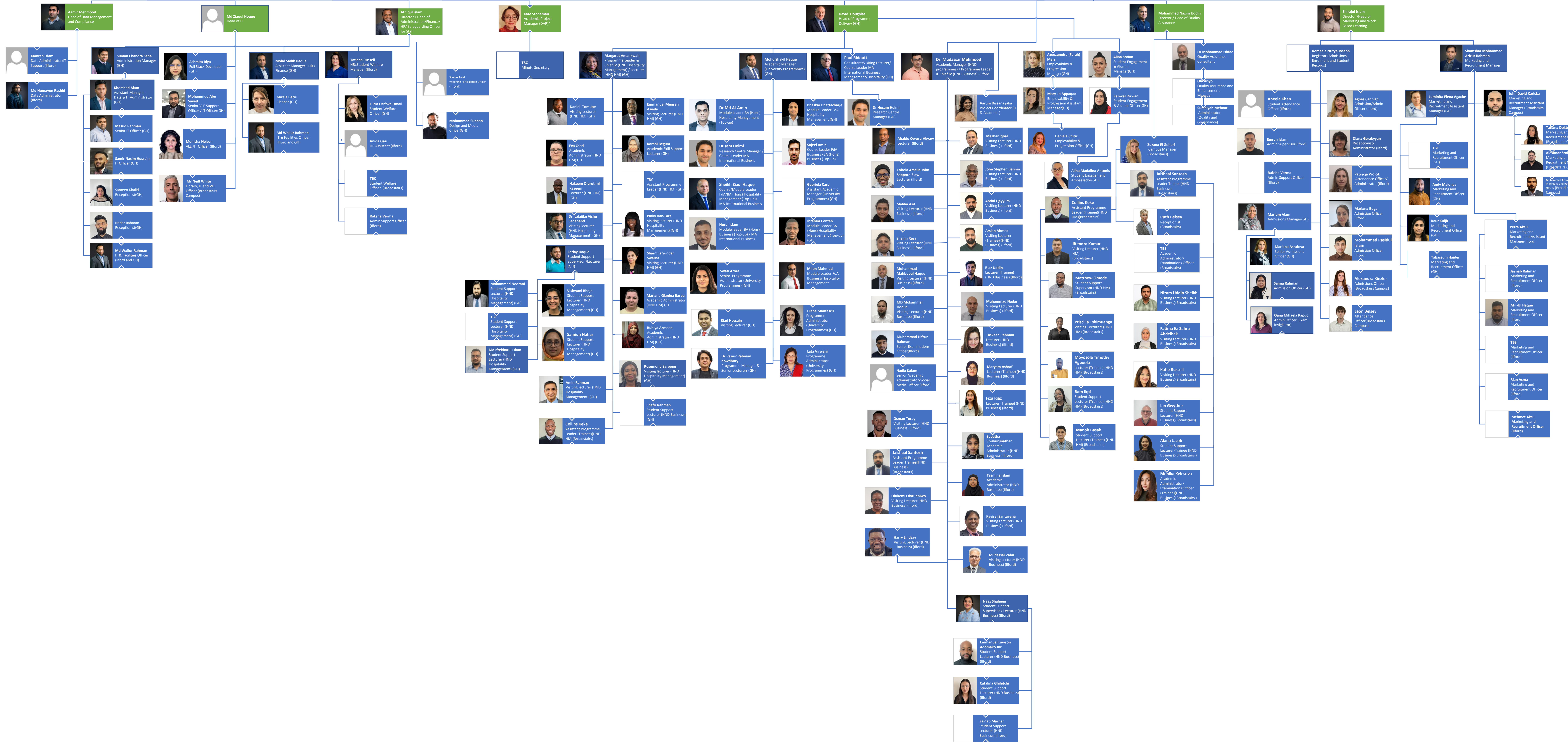
Chair: Roger Bradburn



**Audit, Risk Management and Remuneration Committee**  
Chair: Helen Pickering  
Non-Executive members: Stuart Trow  
Executive members: Nasim Uddin  
Observer: Roger Bradburn

**Roger Bradburn**  
Principal

**Yvonne Alexander** Library and Learning Resources Manager  
**Muhammad Abu Sayed** Senior VLE Support Officer / IT Officer (GH)  
**Manisha Nelson** VLE IT Officer (Hfoid)  
**Anna Ghies** Library and Learning Resource Officer (Hfoid)  
**Mr Noel White** Library, IT and VLE Officer (Broadstairs Campus)



\* Principal's Executive Group (PEG) members