

# PARK THEATRE

## Visual Story

**The Albatross 3rd & Main**

**Park Theatre**

**Park90**


**Relaxed Performance**

**Tuesday 31<sup>st</sup> January**

This visual story is designed for visitors to the Relaxed Performance of **The Albatross 3<sup>rd</sup> & Main**. This document contains information about the play and lots of images to help prepare anyone who may be curious about their visit. This visual story also has information to help you to find your way to Park Theatre, where the play is shown.


## General Information about Park Theatre and the show The Albatross 3<sup>rd</sup> & Main

### Where is the play?

The play is being shown at **Park Theatre**. Here is a picture of Park Theatre. 




Park Theatre is located in **Finsbury Park**, near **Finsbury Park Station**.

Here is a map of the roads around Park Theatre 



If you are travelling by **tube**, exit **Finsbury Park Station** via the **Station Place Exit** and **follow the black dotted line on the map** to get to Park Theatre.

You will walk through the front doors of Park Theatre which look like this. 



When you walk through the doors you will be inside **The Café**.

**The Café** looks like this.



It can get quite busy before the show while everyone waits so it will be **quite full of people**. You can buy food and drinks from the bar before the show, in the interval and after the show is finished.

You may have to queue for your tickets which you can pick up at the **Box Office**.

Here is a picture of the Box Office.



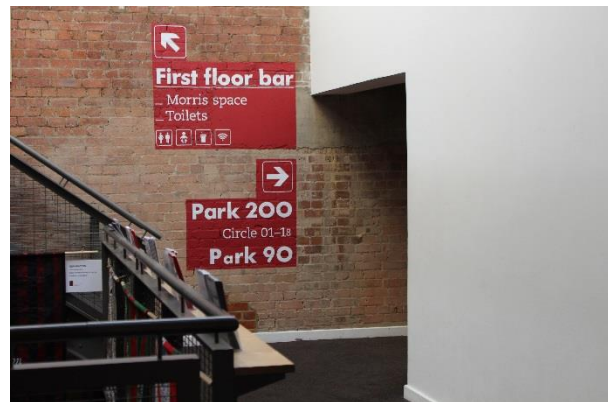
It is on your left as you come through the front doors.

## PARK90

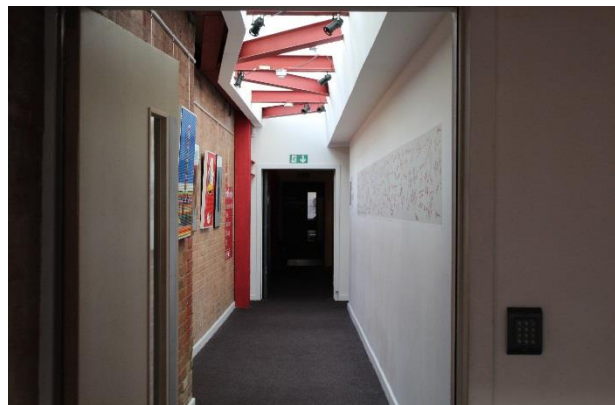
When it is time to go into the theatre, walk **up** the stairs straight ahead of you



Turn left at the top of the stairs and follow these signs to Park90.



Walk through this corridor to the end and you will find the door to the **Park 90** on your right. This is where you need to go inside the theatre to watch the performance.



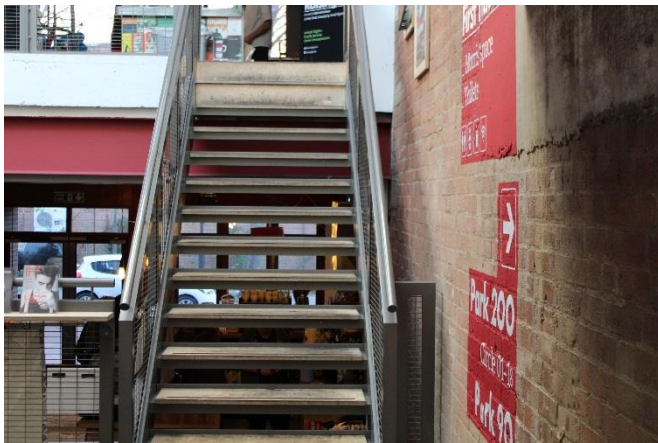


## Toilets

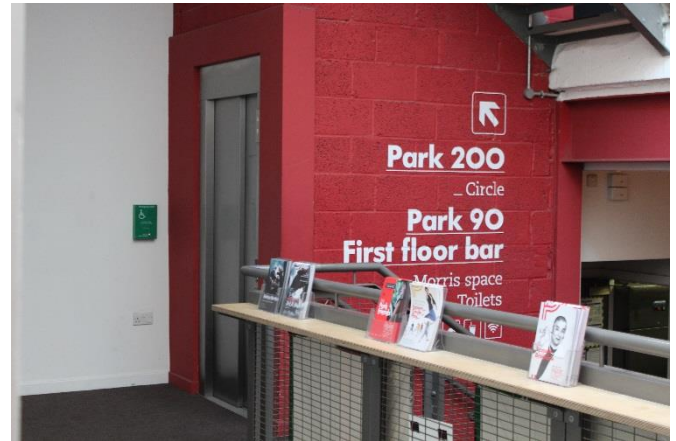
You can find the women's, men's and accessible toilets by walking out of the theatre, turning **right** and walking **straight to the end** of the corridor.



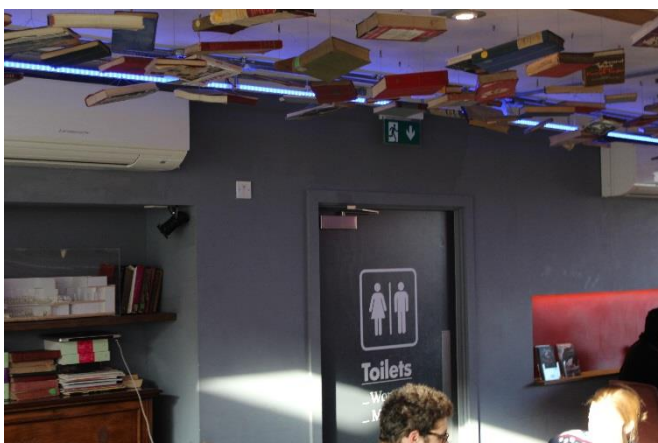
There are **stairs straight ahead** of you or



There is a lift to your **left**



When you get to the top of the stairs or out of the lift, the men's and women's toilets are on the left hand side of the room.



There is an accessible toilet opposite you as you exit the lift. If you have difficulty using small toilet cubicles, if you are in a wheelchair or if you have mobility issues, please use this toilet.

## Other Things to Know

### Front of House Staff

Our Ushers will be there to help and answer any questions you have throughout your time inside Park Theatre and to help you enjoy your visit. They will be dressed like this.



### Chill-Out Area

There are some seats outside the auditorium. If during the show, you want to go outside and come back in later, you can come and sit in this area. If you need to leave the corridor you can come into the café bar, go down stairs and sit in this area



### How long does the play last?

The play is shown in two halves with a break in the middle (called the 'interval') and is 1 hour and 45 minutes long.

- The first half will be **45 minutes long**
- The interval (a break in the middle of the show) is **15 minutes long**
- The second half will be **45 minutes long**



## What is the play about?

The play is about three men in America trying to solve a dilemma...

The people in the play are inside a *General Store*, a shop you would find in every small town in the United States of America. This has barely changed at all since the 1800s. Business is not very good here. The shop is on the corner of a fictional main street in Massachusetts, on the east coast of America.

GENE LACY is the owner of the General Store. He has very bad luck, and is in debt from gambling, his ex-wife has very expensive tastes. So when RICK 'SPIDER' RAGNO walks into his store with a rare and valuable dead bird, Gene has a choice to make. He knows people on a local Native American Indian reservation who could help him to sell the valuable bird, but there is a problem, it's a criminal offense to even be in possession of the bird let alone try to sell it, and they could all end up in jail if they get caught.

Here are some words used in the play that you might not have heard before and what they mean

- **Native American Indians** – the original tribes who lived in America before European settlers arrived.
- **Wig Wam** – Native American dome shaped tent made with animal hides or tree bark over framework of poles.
- **Res** is short for Reservation. An area of land where Native Americans live.
- **Felony Offense**: a serious crime that carries a jail sentence
- **General Store**: the American term for a shop.
- **Eagle Feather Law** – a law put in place by the American government to prevent people from hunting / selling eagle feathers. The punishment is a big fine and a term in prison.
- **Weed** – a slang term for cannabis
- **Junkie**: a drug addict
- **A fix**: taking of an illegal drug

## Information about the Stage and the Set

The stage is the area where the actors perform the play.

The set is the name for all the scenery, furniture and objects used on stage in a play.

## What will the play look like?

- Park Theatre has a **'End On Stage'**
- You will be sitting on one of five rows of seats near the stage. You will have some time before the show to find your seats and get comfy before the play begins.
- The house lights will be kept on at a low level throughout the play so that the auditorium is never in complete darkness.
- The set is made out of **wood and different materials. There are two doors on stage which actors come in and out of. There is a small door in one of the walls that the actors come through too.**



## The actors and the characters in the play.

This play has only three characters in it. Here they are together



### **GENE LACY** played by **Hamish Clark**

A former lobster boat fisherman and owner of *Lacy's General Store*. Gene didn't want much from life: a fishing boat and somebody to love. However, he is stuck on dry land, struggling with debt and he has an ex-wife with very expensive tastes, a business which barely makes any money. He feels like time is running out to change his life for the better.

### **LOUIS 'LULLABY' LEE** played by **Andrew St Clair-James**

Lullaby is Gene's right hand man, they are good friends and spend long nights together deep sea fishing. He is a big man, an ex semi-pro featherweight boxer, he might have been a great fighter except he got in a bit of trouble when he was at his most successful. He loves reading periodicals, he has a very good memory for facts and figures. He suffered lots of head injuries when he was a boxer, and that has changed the way his brain works, slowed down and confused his thinking and he now has a mild form of OCD. Lullaby is loyal, hardworking and kind. He sometimes has unpredictable outbursts and can behave in unusual ways.





### **RICK 'SPIDER' RAGNO played by Charlie Allen**

Spider is a slick 'desperado', born and raised in small town USA, who failed school and has never had a proper job in his life. Strangely likeable, he is on the fringes of the hardcore criminal group that he would like to consider himself a part of. Spider never really thinks beyond the moment, which is both a blessing and a curse: he doesn't ever feel he's failed but he is never learns from his mistakes. If he isn't careful he will end up in jail.

### **Further information on the story and the characters**

In this section you will find out more about what happens in the play and there are also some notes on particular moments which are dramatic, distressing or exciting which you might want to talk through before coming to see the show.

### **Show Notes**

- The play deals with
- There is music / sound in the play
- **Objects used in a play are called props. Props that look like alcohol, drugs or weapons cannot cause actual harm.**
- There is some bad language and swearing in the play.
- Characters use alcohol /poison/weapons on stage but these are all stage props and are not real.
- The use of drugs is referred to.
- There is use of smoke/haze near the beginning of the play.
- There are several words used to describe Lullaby including 'autistic', 'slow' or 'retard' or 'rainman'. These are to demonstrate the attitude of the Spider character in the play and are not to cause offence.

## The Rime of the Ancient Mariner

This is a poem referred to and quoted in the play that we thought you might like to read. It is in seven parts so we have just printed the extract that you will hear bits of. You may want to look for a copy on the website to read the whole poem. It's all about a sailor who kills an albatross whilst on a sea voyage which results in the ship being cursed.

### PART II

The Sun now rose upon the right:  
Out of the sea came he,  
Still hid in mist, and on the left  
Went down into the sea.

And the good south wind still blew behind,  
But no sweet bird did follow,  
Nor any day for food or play  
Came to the mariner's hollo!

And I had done a hellish thing,  
And it would work 'em woe:  
For all averred, I had killed the bird  
That made the breeze to blow.  
Ah wretch! said they, the bird to slay,  
That made the breeze to blow!

Nor dim nor red, like God's own head,  
The glorious Sun uprist:  
Then all averred, I had killed the bird  
That brought the fog and mist.  
'Twas right, said they, such birds to slay,  
That bring the fog and mist.

The fair breeze blew, the white foam flew,  
The furrow followed free;  
We were the first that ever burst  
Into that silent sea.

Down dropt the breeze, the sails dropt down,  
'Twas sad as sad could be;  
And we did speak only to break  
The silence of the sea!

All in a hot and copper sky,  
The bloody Sun, at noon,  
Right up above the mast did stand,  
No bigger than the Moon.

Day after day, day after day,  
We stuck, nor breath nor motion;  
As idle as a painted ship  
Upon a painted ocean.

Water, water, every where,  
And all the boards did shrink;  
Water, water, every where,  
Nor any drop to drink.

The very deep did rot: O Christ!  
That ever this should be!  
Yea, slimy things did crawl with legs  
Upon the slimy sea.

About, about, in reel and rout  
The death-fires danced at night;  
The water, like a witch's oils,  
Burnt green, and blue and white.

And some in dreams assurèd were  
Of the Spirit that plagued us so;  
Nine fathom deep he had followed us  
From the land of mist and snow.

And every tongue, through utter drought,  
Was withered at the root;  
We could not speak, no more than if  
We had been choked with soot.

Ah! well a-day! what evil looks  
Had I from old and young!  
Instead of the cross, the Albatross  
About my neck was hung

**We look forward to seeing you at our relaxed performance on Tuesday 31 January  
starting at 3.15pm.**