

q PARK THEATRE

Visual Story Guide

Shackleton and his Stowaway

Park Theatre

Park90

Dementia Friendly Performance

Thursday 30th January 2020 at 1.00pm


This visual story is designed for visitors to the Dementia Friendly Performance of **Shackleton and his Stowaway**. This document contains information about the play and lots of images to help prepare anyone who may be curious about their visit. This visual story also has information to help you to find your way to Park Theatre, where the play is shown.

What is a Dementia Friendly performance?

This sets out to provide a warm and welcoming environment. The performance is adapted to be more accessible and inclusive, with adjustments to lighting and sound levels, and a relaxed attitude to noise and moving around the auditorium during the play. A comfortable 'chill out zone' will also be provided for anyone who wishes to take time out during the performance. By providing a relaxed environment that will reduce stress levels, we can make it possible for those affected by Dementia to experience a live theatre performance.


General Information about Park Theatre and the show Killing Time

Where is the play?

The play is being shown at **Park Theatre**. Here is a picture of Park Theatre. 




Park Theatre is located in **Finsbury Park**, near **Finsbury Park Station**.

Here is a map of the roads around Park Theatre 



If you are travelling by **tube**, exit **Finsbury Park Station** via the **Station Place Exit** and **follow the black dotted line on the map** to get to Park Theatre.

You will walk through the front doors of Park Theatre which look like this. 



When you walk through the doors you will be inside **The Café**.

The Café looks like this.



It can get quite busy before the show while everyone waits so it will be **quite full of people**. You can buy food and drinks from the bar before the show, in the interval and after the show is finished.

You may have to queue for your tickets which you can pick up at the **Box Office**.

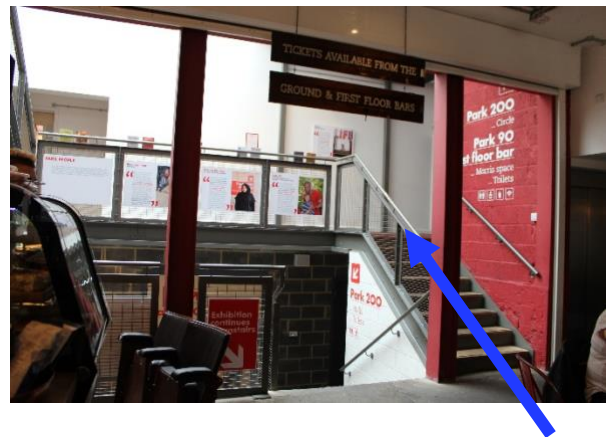
Here is a picture of the Box Office.



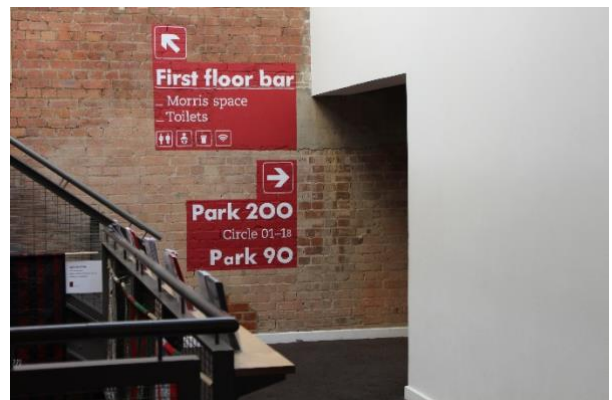
It is on your left as you come through the front doors.

PARK90

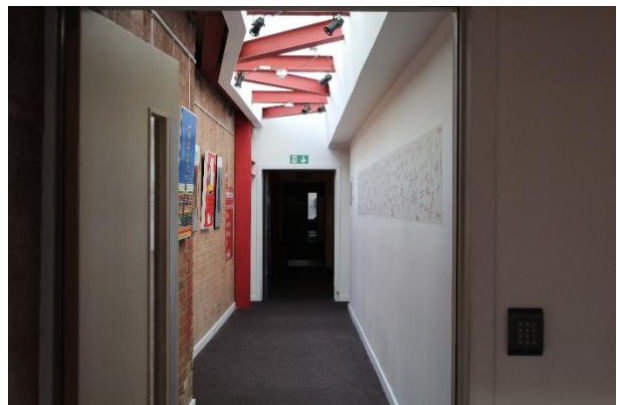
When it is time to go into the theatre, walk **up** the stairs straight ahead of you



Turn left at the top of the stairs and follow these signs to Park90.



Walk through this corridor to the end and you will find the door to **Park 90** on your right. This is where you need to go inside the theatre to watch the performance. We will inform you when the theatre is open for you to take your seats



Toilets

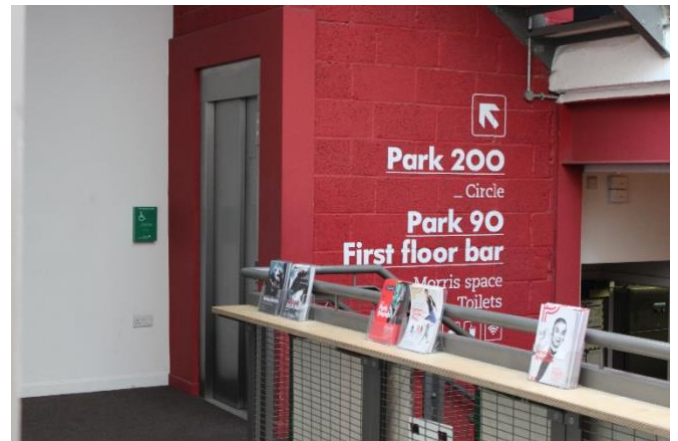
You can find the women's, men's and accessible toilets by walking out of the theatre, turning **right** and walking **straight to the end** of the corridor.



There are **stairs straight ahead** of you or



There is a lift to your **left**



When you get to the top of the stairs or out of the lift, the men's and women's toilets are on the left hand side of the room.



There is an accessible toilet opposite you as you exit the lift. If you have difficulty using small toilet cubicles, if you are in a wheelchair or if you have mobility issues, please use this toilet.

Other Things to Know

Front of House Staff

Our Ushers will be there to help and answer any questions you have throughout your time inside Park Theatre and to help you enjoy your visit. They will be dressed like this.



Chill-Out Area

There are some seats outside the auditorium. If during the show, you want to go outside and come back in later, you can come and sit in this area. If you need to leave the corridor you can come into the café bar, go down stairs and sit in this area



How long does the play last?

- The play is 2 hours long
- There is an interval that is 20mins long



What is the play about?

Shackleton and his Stowaway is based on the real events of the legendary Endurance expedition to Antarctica. It follows the misfortunes of an 18 year old stowaway who sneaks aboard. Initially, the stowaway is in complete awe of Shackleton. But this fades by the time Shackleton has gotten them trapped in the polar ice pack - even more so when Endurance actually breaks up and sinks. This leaves them adrift on the ice, hundreds of miles from civilisation.

The play is written by Andy Dickinson and directed by Simone Coxall.

Information about the Stage and the Set

There are a number of palettes and crates on the stage, which are often reconfigured for different areas of the Endurance ship. There is also often a rope across the front of the stage in the First Act to recreate the deck. In the second act the stage is more bare, but still with some use of crates and palettes. There are occasional projections on the back wall of Antarctic conditions. Lighting on stage can be low at times to recreate the conditions of the polar night.

What will the play look like?

- Park90 will be in an L shape with audience on 2 sides.
- You will have some time before the show to find your seats and get comfy before the play begins.
- The house lights will be kept on at a low level throughout the play so that the auditorium is never in complete darkness.

Show Notes

- The play is a mixture of comic moments and descriptive poetry. Shackleton and his Stowaway are often in some degree of peril.
- There are sound effects, but these will be at a low sound level.
- There is a little bit of strong language.
- Lights are often low, but won't be in the auditorium.
- The set is often moved around and there are large scale projections

The actors in the play.



Richard Ede – Shacklton



Elliott Ross – The Stowaway

**We look forward to seeing you at our dementia friendly performance on Thursday
30th January at 3.15pm.**