

Office of the Police and Crime Commissioner

“What we do”

Jim Haylett
Chief Executive

16 March 2021

Overarching legislation

Police Reform and Social Responsibility Act 2011

Policing Protocol Order 2011

Police Act (s)

Local government legislation

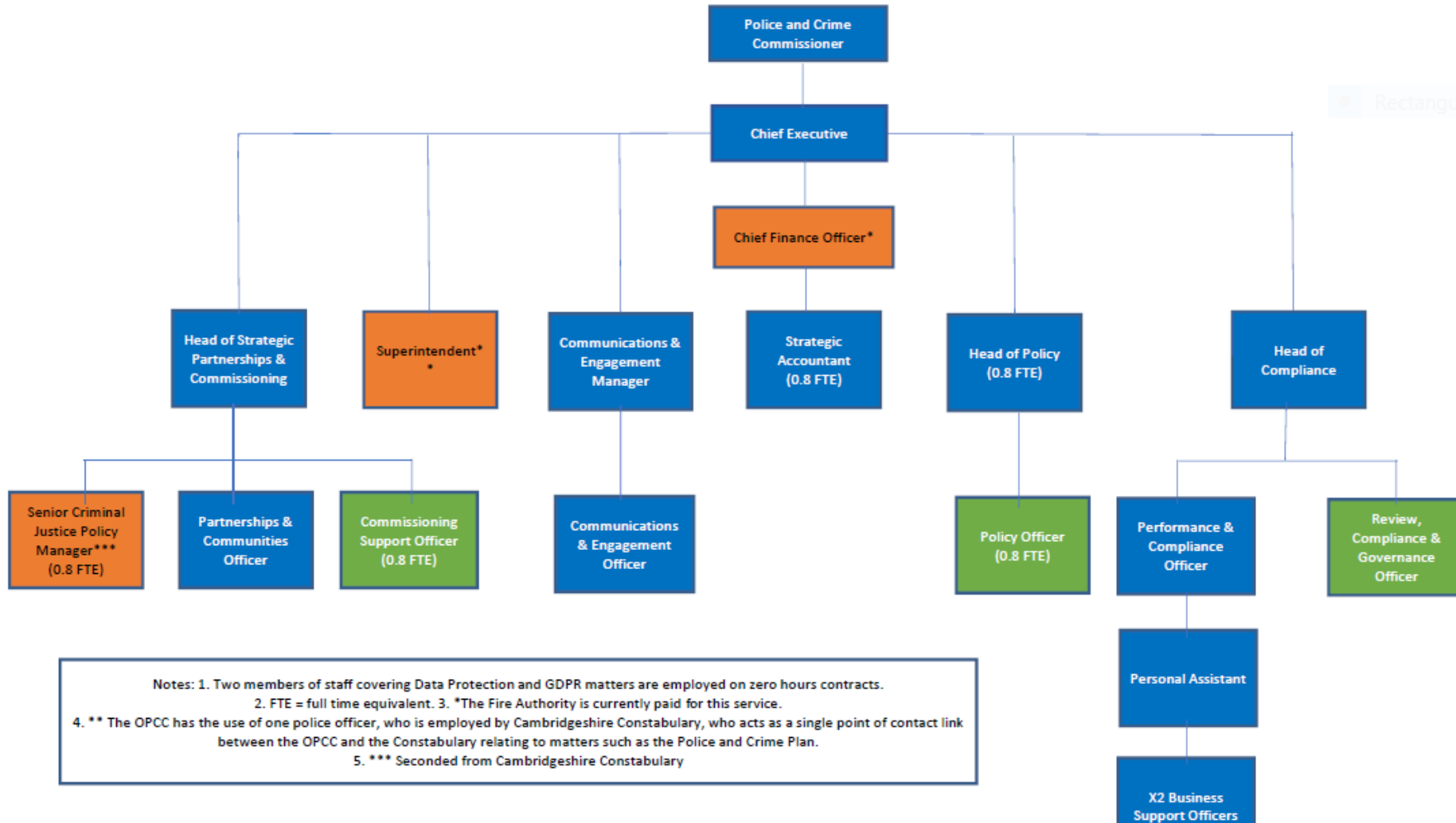
The OPCC

- ▶ Easiest way to think of us is as the civil service for the PCC.
 - ▶ support PCC;
 - ▶ support delivery of the Police and Crime Plan;
 - ▶ fulfil statutory duties.

- ▶ Politically restricted and politically neutral;
- ▶ Police staff terms and conditions and policies;
- ▶ Separate organisation to the Constabulary.

OPCC Structure

Office of the Police and Crime Commissioner for Cambridgeshire & Peterborough



What we do

Governance Framework

Board structures (BCB, Resource Group, BCH Summit, ER Summit, People & Information Boards, JPS, Op Support, SAMB, 7F Procurement)
Partnership arrangements
Independent Scrutiny Group; Independent Custody Visitors
Scheme of delegation, financial regulations, contract standing orders
Policies and procedures; Publication scheme; Risk Registers
Medium Term Financial strategy, Capital Strategy, Estate Strategy
External Audit, Internal Audit, HMICFRS, ICO, etc
Joint Audit Committee
Police and Crime Panel

Supporting Partnerships	Commissioning delivery	Enabling functions	Hold Chief Constable to Account
Cambridgeshire Criminal Justice Board	Victim Support Services	Complaints against PCC	Delivery of Police and Crime Plan priorities
Countywide Strategic Community Safety	Crime and Disorder Reduction Grants & Prevention	Complaints against CC	Effectiveness and efficiency
		Constabulary complaints review	
Thematic Delivery Groups and Community Safety Partnerships	Casualty Reduction & Support Reserve	Finance	Collaboration
Safeguarding Children & Adults	Youth and Community Fund (small grants)	Business support (+admin)	Strategic Policing Requirement
New Regional Reducing Reoffending Board	Contract Management & Outcome Monitoring	FOI, EIR, SAR	Equality and Diversity
		DPO	Use of Force
		Comms and engagement	Engagement with public
		ICV scheme	Complaints system
			Safeguarding

Production and delivery of Police and Crime Plan



Governance framework

- ▶ Board structures (BCB, Resource Group, BCH Summit, ER Summit, People & Information Boards, JPS, Op Support, SAMB, 7F Procurement)
- ▶ Partnership arrangements
- ▶ Independent Scrutiny Group; Independent Custody Visitors
- ▶ Scheme of delegation, financial regulations, contract standing orders
- ▶ Policies and procedures; Publication scheme; Risk Registers
- ▶ Medium Term Financial strategy, Capital Strategy, Estate Strategy
- ▶ External Audit, Internal Audit, HMICFRS, ICO, etc
- ▶ Joint Audit Committee
- ▶ Police and Crime Panel



Supporting Partnerships

- ▶ Cambridgeshire Criminal Justice Board
- ▶ Countywide Strategic Community Safety
- ▶ Thematic Delivery Groups and Community Safety Partnerships
- ▶ Safeguarding Children & Adults
- ▶ New Regional Reducing Reoffending Board



Commissioning Delivery

- ▶ Victim Support Services
- ▶ Reduction Grants & Prevention
- ▶ Youth and Community Fund (small grants)
- ▶ Contract Management & Outcome Monitoring



Enabling Functions

- ▶ Complaints against PCC
- ▶ Complaints against CC
- ▶ Constabulary complaints review
- ▶ Finance
- ▶ Business support (+admin)
- ▶ FOI, EIR, SAR (Freedom of Information; Environmental Impact Regulations, Subject Access Requests)
- ▶ DPO
- ▶ Communications and engagement
- ▶ Independent Custody Visitor scheme



Holding the Chief to Account

- ▶ Delivery of Police and Crime Plan priorities
- ▶ Effectiveness and efficiency
- ▶ Collaboration
- ▶ Strategic Policing Requirement
- ▶ Equality and Diversity
- ▶ Use of Force
- ▶ Engagement with public
- ▶ Complaints system
- ▶ Safeguarding



Preparation and delivery of Police and Crime Plan

- ▶ Key statutory document to set out your police and crime objectives
- ▶ Statutory requirements must be included within it.
- ▶ Needs to be completed by end of first financial year
- ▶ Strong evidence base - including victim and offender needs assessments and range of thematic assessments
- ▶ Opportunity to obtain the views of the public and partners
- ▶ Strong partnership working can support mutual responsibilities to 'have regard to' respective priorities
- ▶ Reviewed by Police and Crime Panel before publication



Office Arrangements

- ▶ 15 Staff
- ▶ Remote working through Covid
- ▶ No full return to office - Covid secure arrangements
- ▶ Location at HQ and reliant on all Constabulary systems
- ▶ Police staff terms and conditions



Additional information

- ▶ Arrangements for Oath
- ▶ Appointment of Deputy
- ▶ Code of Conduct
- ▶ Reasonable adjustments

- ▶ I will discuss these issues with each of you outside the meeting.



Police and Crime Panel

- ▶ Edward Leigh input

Questions?

4 December 2020