

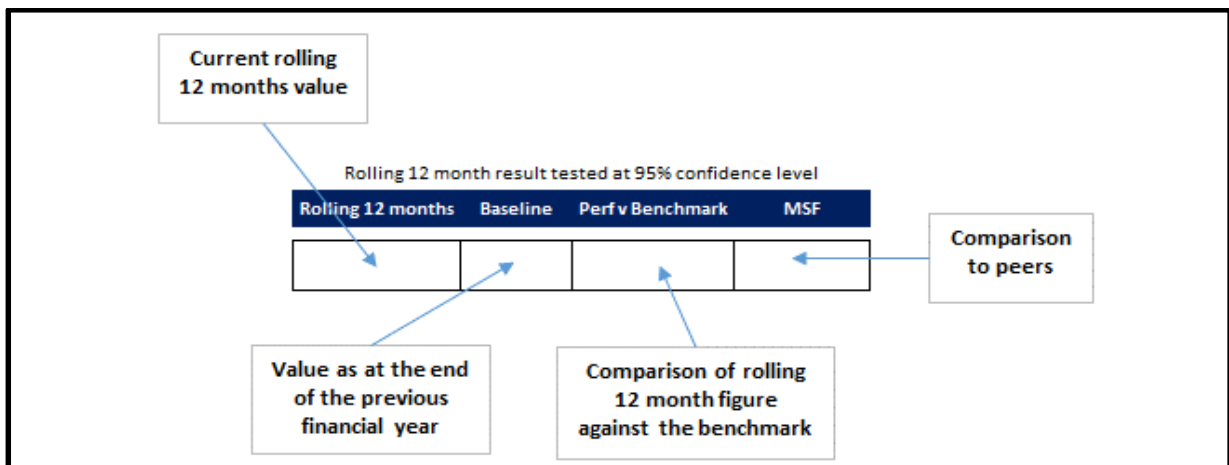
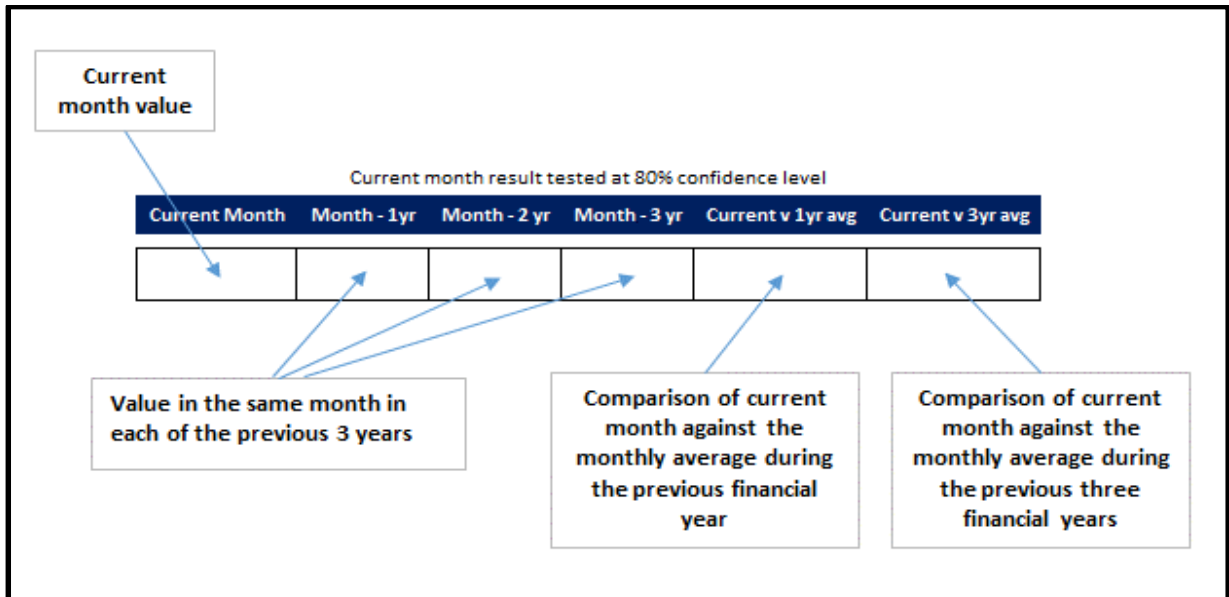
# **Cambridgeshire Constabulary**

## **Police and Crime Commissioner Performance Update**

**March 2016**

	<b>Page</b>
<b>Notes</b>	<b>3</b>
<b>Police and Crime Plan Dashboard</b>	<b>4</b>
<b>Police and Crime Plan Indicators</b>	
Maintain Local Police Performance	5-7
Continue to tackle Crime and Disorder	8-13
Keeping People Safe	14-16
Maintain the resilience of protective services	17
Organisational Health	18
<b>Arrests</b>	<b>19</b>
<b>Stop Searches</b>	<b>20</b>
<b>Information sheet</b>	<b>21</b>

### DASHBOARD EXPLANATION



Note: where a cell has been highlighted in grey, this indicates a significant change

### MOST SIMILAR FORCES

- Avon and Somerset
- Devon and Cornwall
- Gloucestershire
- Staffordshire
- Thames Valley
- Warwickshire
- Wiltshire

# NOT PROTECTIVELY MARKED

## POLICE AND CRIME PLAN DASHBOARD

Current month result tested at 80% confidence level

Rolling 12 month result tested at 95% confidence level

Maintain Local Police Performance	Current Month	Mar-15	Mar-14	Mar-13	Current v 1yr avg	Current v 3yr avg	Rolling 12 months	Baseline	Perf v Benchmark	MSF
Dealing with Local Concerns	71.2%	73.6%	69.4%	72.7%	Comparable	Comparable	74.3%	72.0%	Higher	Lower
Satisfaction with Service Delivery	88.4%	81.1%	88.6%	87.5%	Comparable	Comparable	86.4%	86.2%	Comparable	Higher
Special Constabulary - N <sup>o</sup> of Officers	257	280	284	245	-	-	257	280	Below target	-
Special Constabulary - N <sup>o</sup> of Hours worked	4,733	6,711	6,243	-	Lower	-	66,095	74,851	Comparable	-
999 calls answered within 10 seconds	96.6%	95.6%	96.1%	97.5%	Comparable	Comparable	95.1%	94.9%	Comparable	-
Non-emergency calls answered within 30 seconds*	94.5%	92.9%	94.4%	87.9%	Comparable	Comparable	94.2%	94.1%	Comparable	-

Continue to tackle Crime and Disorder	Current Month	Mar-15	Mar-14	Mar-13	Current v 1yr avg	Current v 3yr avg	Rolling 12 months	Baseline	Perf v Benchmark	MSF
All Recorded Crime	3,968	4,078	3,825	3,338	Comparable	Comparable	48,642	46,318	Higher	Comparable
Victim-Based Crime	3,569	3,623	3,429	3,001	Comparable	Comparable	43,935	41,524	Higher	Comparable
Perception of high ASB	3.1%	0.2%	1.3%	0.3%	Higher	Higher	0.8%	0.7%	Comparable	-
Anti-social behaviour	1,911	1,796	2,236	2,069	Comparable	Comparable	22,613	24,582	Lower	-
All Crime Prosecution Possible Outcome Rate	21.8%	19.5%	27.2%	31.1%	Lower	Lower	20.4%	24.4%	Lower	Comparable
Satisfaction with Service Delivery - Burglary Dwelling	95.2%	90.9%	91.3%	96.8%	Comparable	Comparable	91.8%	94.4%	Lower	Comparable
Burglary Dwelling	161	210	202	194	Lower	Lower	2,366	2,296	Comparable	Higher
Burglary Dwelling Prosecution Possible Outcome Rate	12.4%	3.8%	7.9%	11.9%	Higher	Lower	10.4%	11.3%	Comparable	Higher
Asset Recovery (data currently unavailable)										
Harm caused by all known OCGs operating in Cams**	56.9	59.1	-	-	Lower	-	968	1,359	Lower	-
Harm caused by cohort of OCGs identified at year end**	22.8	n/a	n/a	n/a	Lower	n/a	525	1,359	Lower	-
Perception of Drug Misuse	14.6%	13.0%	8.9%	7.9%	Higher	Higher	11.4%	8.8%	Higher	-

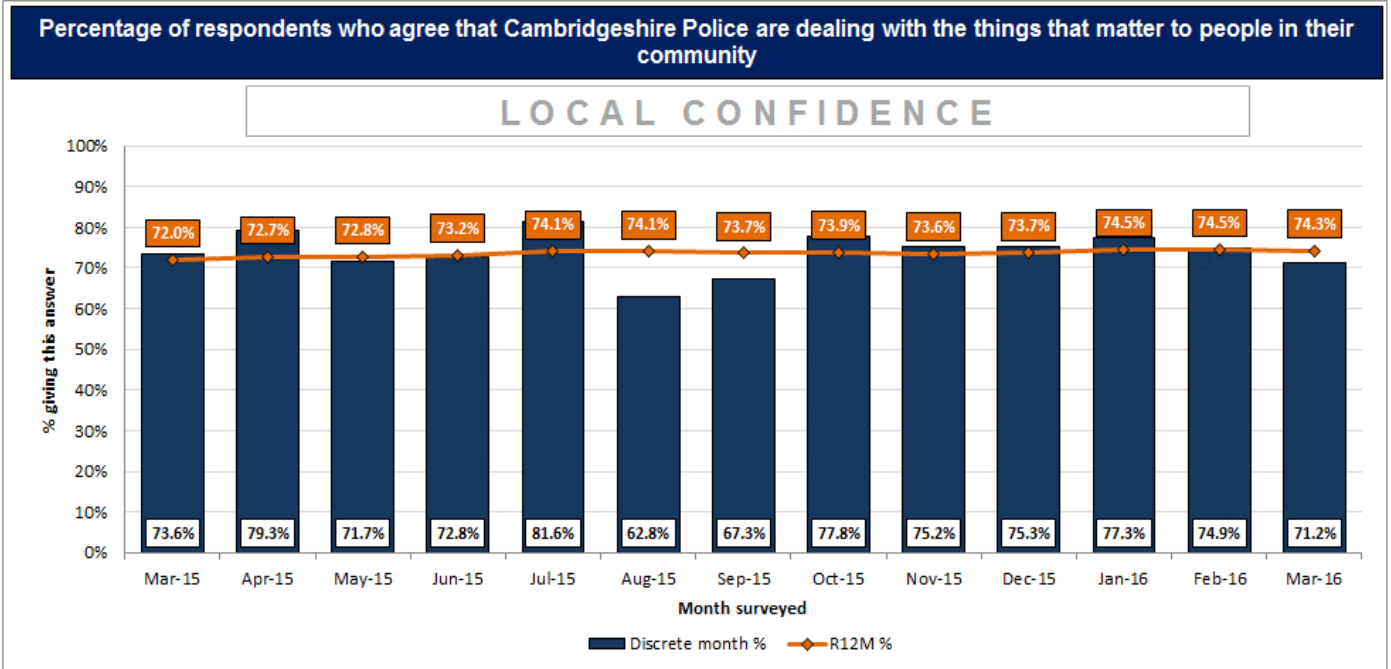
Keeping People Safe	Current Month	Mar-15	Mar-14	Mar-13	Current v 1yr avg	Current v 3yr avg	Rolling 12 months	Baseline	Perf v Benchmark	MSF
Ratio of DV Incidents to Prosecutions										
Outcome Rate for Domestic Abuse Crime	28.0%	31.6%	34.9%	55.8%	Lower	Lower	31.1%	35.3%	Lower	-
IOM (% of people who reoffend within 12 months)										
IOM (N <sup>o</sup> of people who commit offences on the scheme)										
Hate Crime Prosecution Possible Outcome Rate	20.6%	20.3%	34.1%	81.3%	Lower	Lower	28.2%	29.7%	Comparable	-
Satisfaction with Service Delivery - Hate Incidents	75.0%	87.5%	87.5%	69.2%	Comparable	Comparable	85.4%	80.0%	Comparable	Higher

Maintain the resilience of protective services	Current Month	Feb-15	Feb-14	Feb-13	Current v 1yr avg	Current v 3yr avg	Rolling 12 months	Baseline	Perf v Benchmark	MSF
Reduce KSI Road Casualties	24	21	29	25	Comparable	Comparable	354	361	Lower	Comparable

Organisational Health	Current Month	Mar-15	Mar-14	Mar-13	Current v 1yr avg	Current v 3yr avg	Rolling 12 months	Baseline	Perf v Benchmark	MSF
Sickness - Police Officer	0.8	0.7	0.5	0.5	Higher	Higher	7.6	6.3		Below national average
Sickness - Police Staff	0.8	0.7	0.6	0.7	Comparable	Comparable	10.9	9.1		Above national average

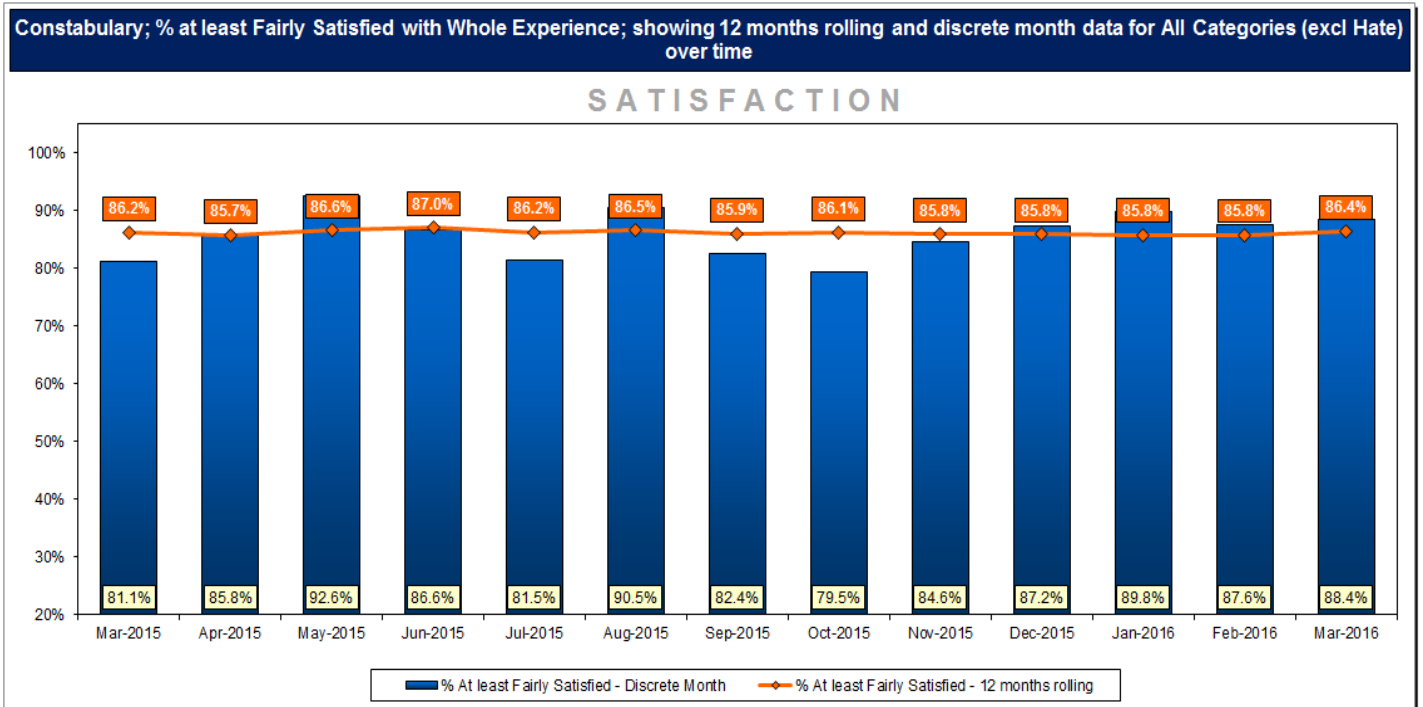
MAINTAIN LOCAL POLICE PERFORMANCE

Current Month	Mar-15	Mar-14	Mar-13	Current v 1yr avg	Current v 3yr avg	Rolling 12 months	Baseline	Perf v Benchmark	MSF
71.2%	73.6%	69.4%	72.7%	Comparable	Comparable	74.3%	72.0%	Higher	Lower



Policing in Cambridgeshire Survey data to March 2016

Current Month	Mar-15	Mar-14	Mar-13	Current v 1yr avg	Current v 3yr avg	Rolling 12 months	Baseline	Perf v Benchmark	MSF
88.4%	81.1%	88.6%	87.5%	Comparable	Comparable	86.4%	86.2%	Comparable	Higher

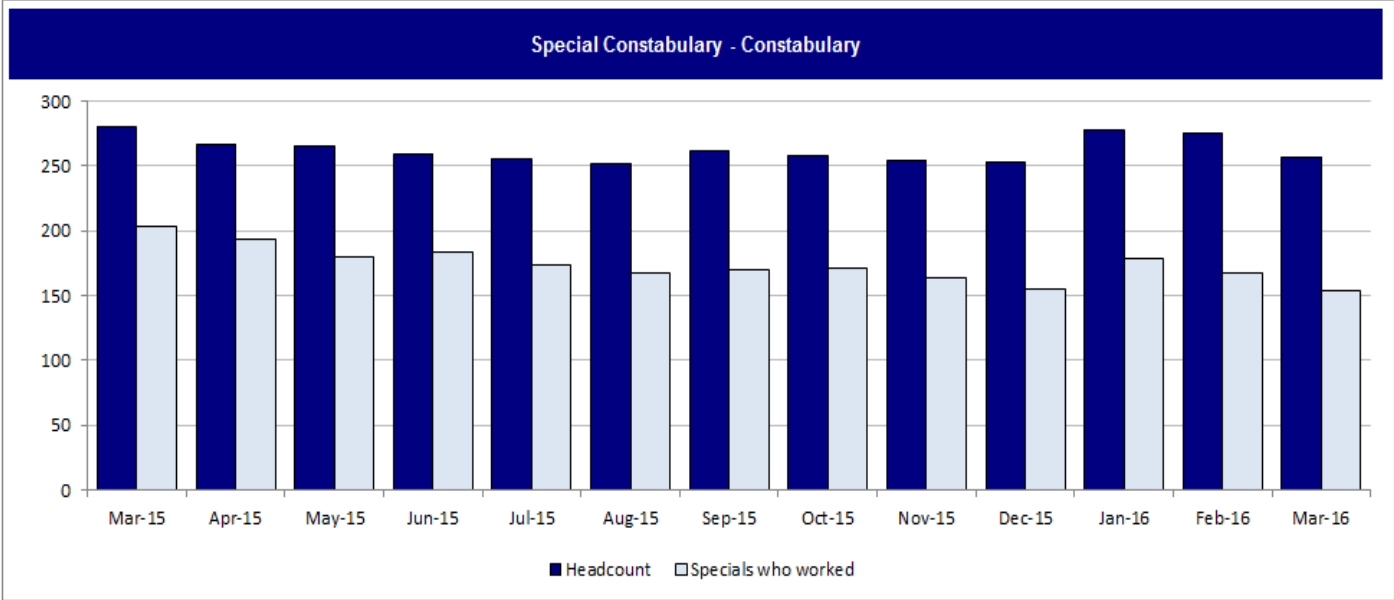


Policing in Cambridgeshire Survey data to March 2016

**SPECIAL CONSTABULARY**

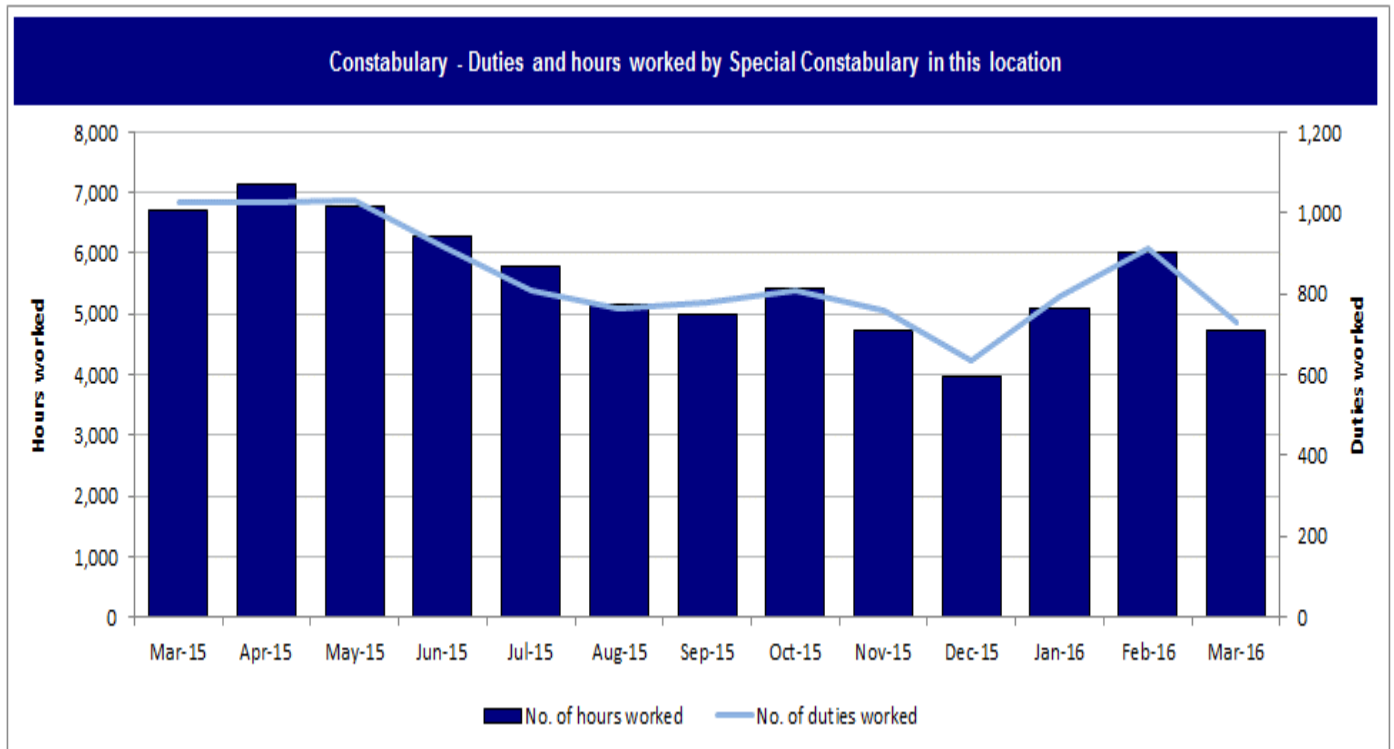
Current Month	Mar-15	Mar-14	Mar-13	Current v 1yr avg	Current v 3yr avg
257	280	284	245	-	-

Rolling 12 months	Baseline	Perf v Benchmark	MSF
257	280	Below target	-



Current Month	Mar-15	Mar-14	Mar-13	Current v 1yr avg	Current v 3yr avg
4,733	6,711	6,243	-	Lower	-

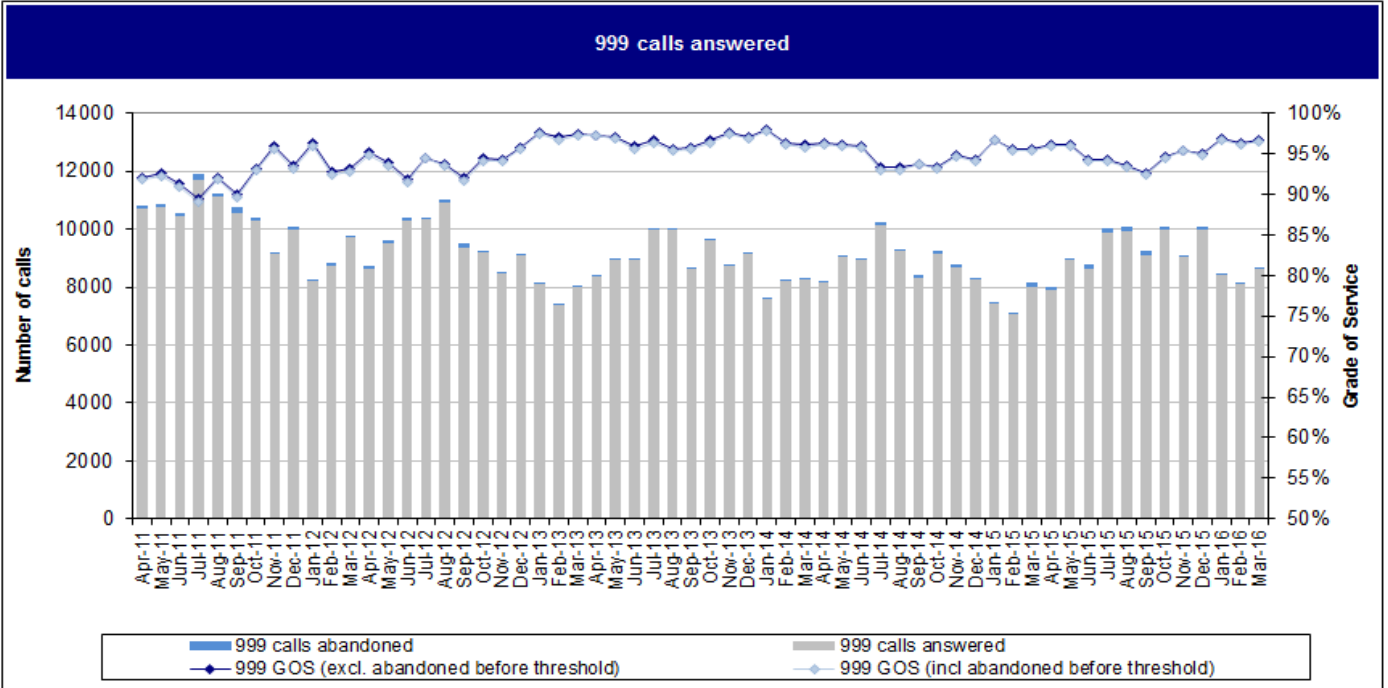
Rolling 12 months	Baseline	Perf v Benchmark	MSF
66,095	74,851	Comparable	-



CALL HANDLING

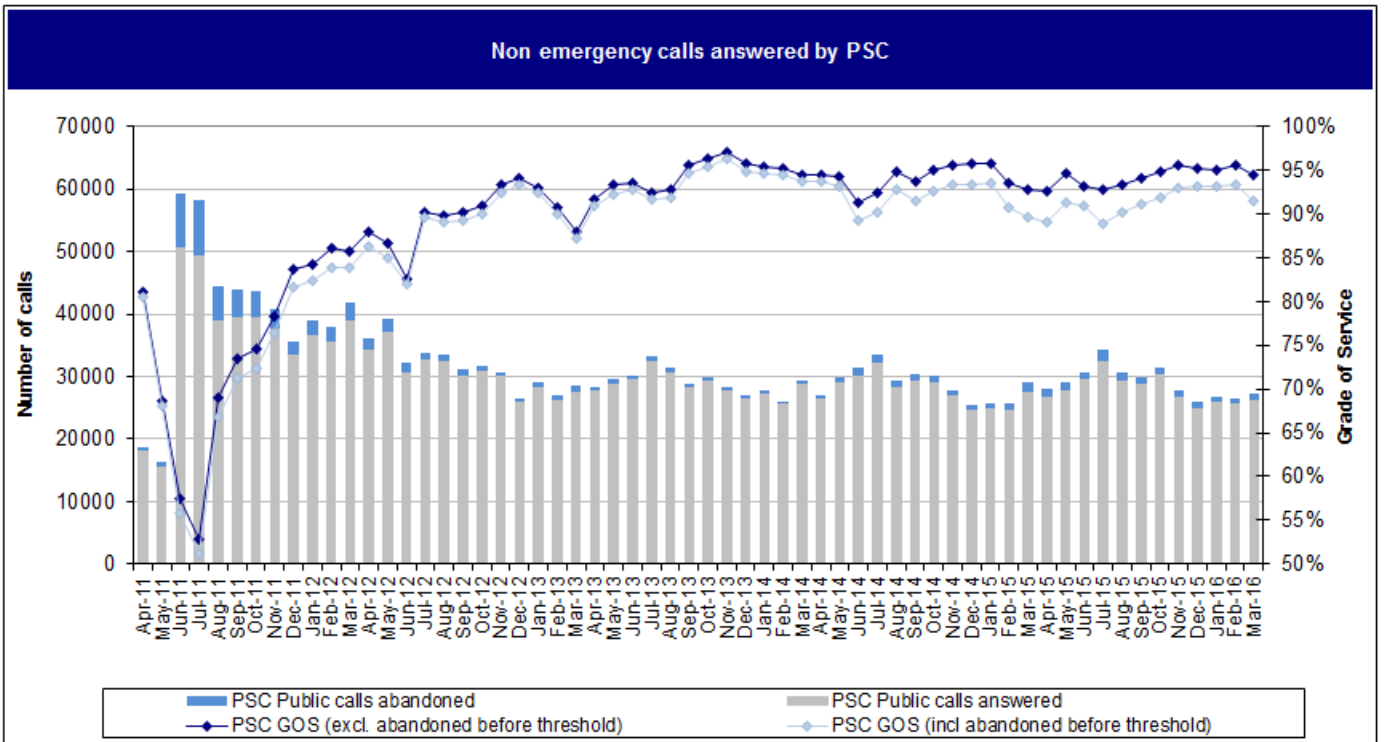
Current Month	Mar-15	Mar-14	Mar-13	Current v 1yr avg	Current v 3yr avg
96.6%	95.6%	96.1%	97.5%	Comparable	Comparable

Rolling 12 months	Baseline	Perf v Benchmark	MSF
95.1%	94.9%	Comparable	-



Current Month	Mar-15	Mar-14	Mar-13	Current v 1yr avg	Current v 3yr avg
94.5%	92.9%	94.4%	87.9%	Comparable	Comparable

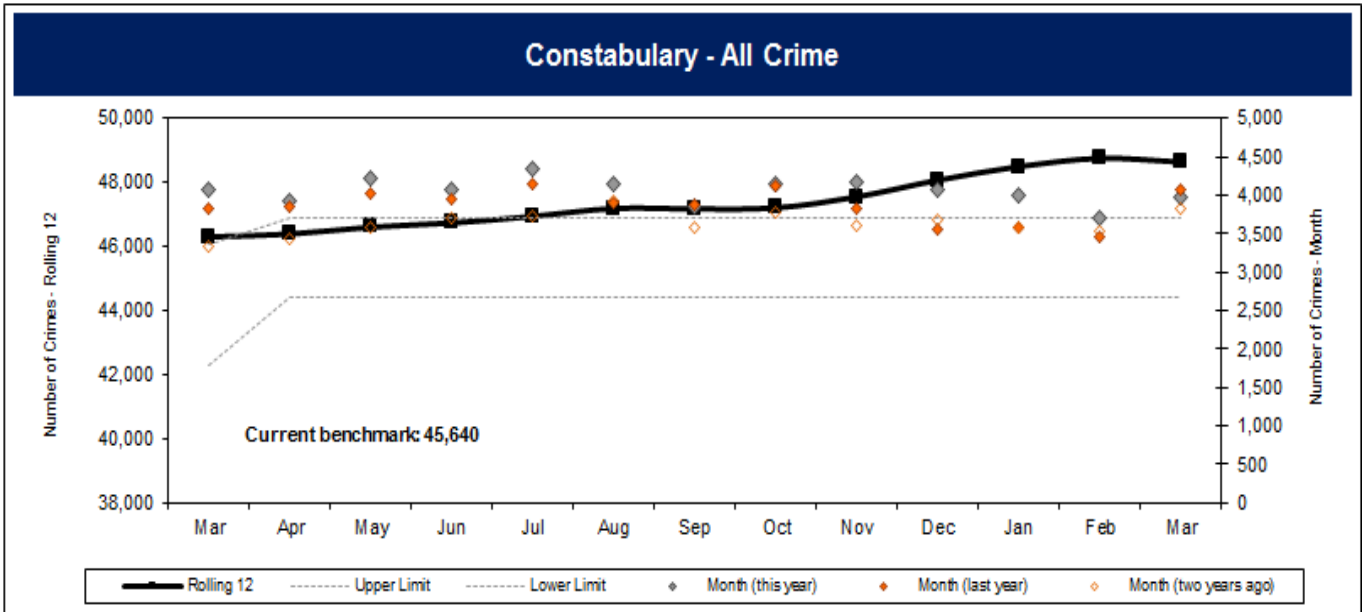
Rolling 12 months	Baseline	Perf v Benchmark	MSF
94.2%	94.1%	Comparable	-



CONTINUE TO TACKLE CRIME AND DISORDER

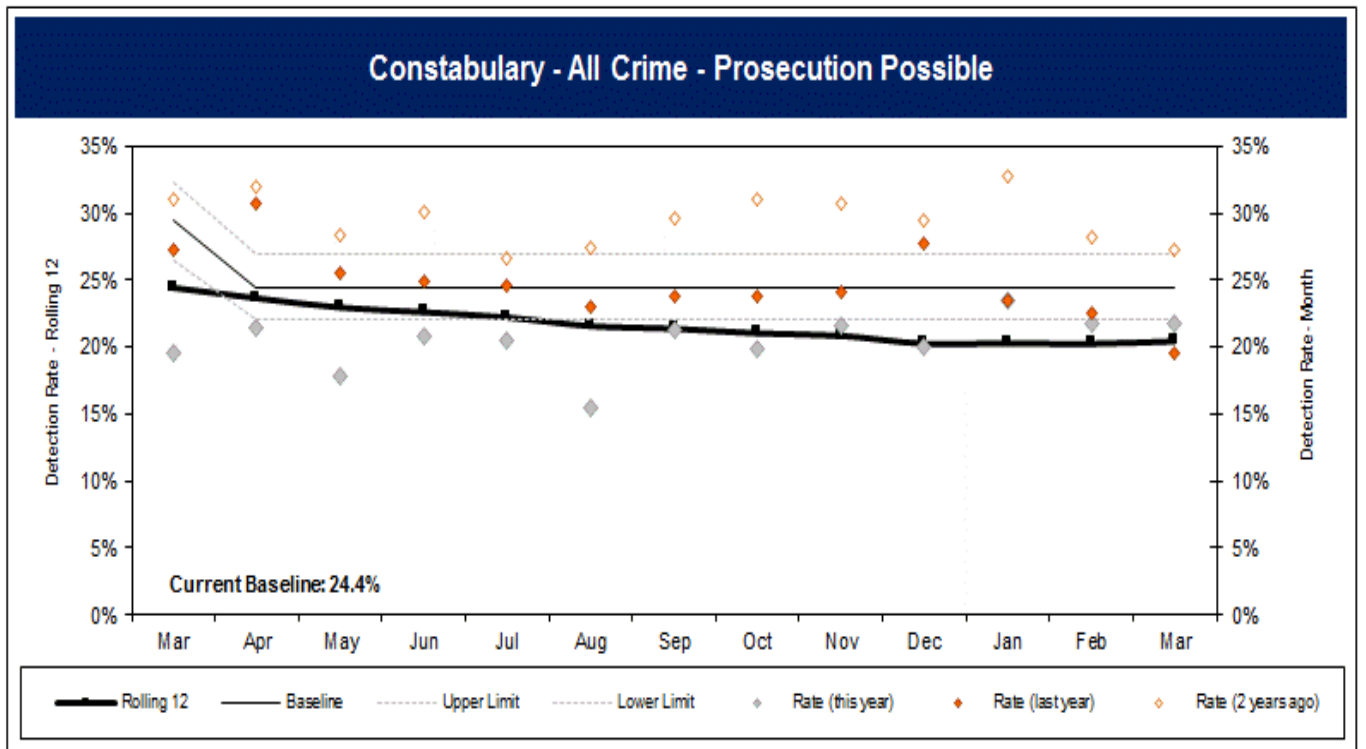
Current Month	Mar-15	Mar-14	Mar-13	Current v 1yr avg	Current v 3yr avg
3,968	4,078	3,825	3,338	Comparable	Comparable

Rolling 12 months	Baseline	Perf v Benchmark	MSF
48,642	46,318	Higher	Comparable



Current Month	Mar-15	Mar-14	Mar-13	Current v 1yr avg	Current v 3yr avg
21.8%	19.5%	27.2%	31.1%	Lower	Lower

Rolling 12 months	Baseline	Perf v Benchmark	MSF
20.4%	24.4%	Lower	Comparable

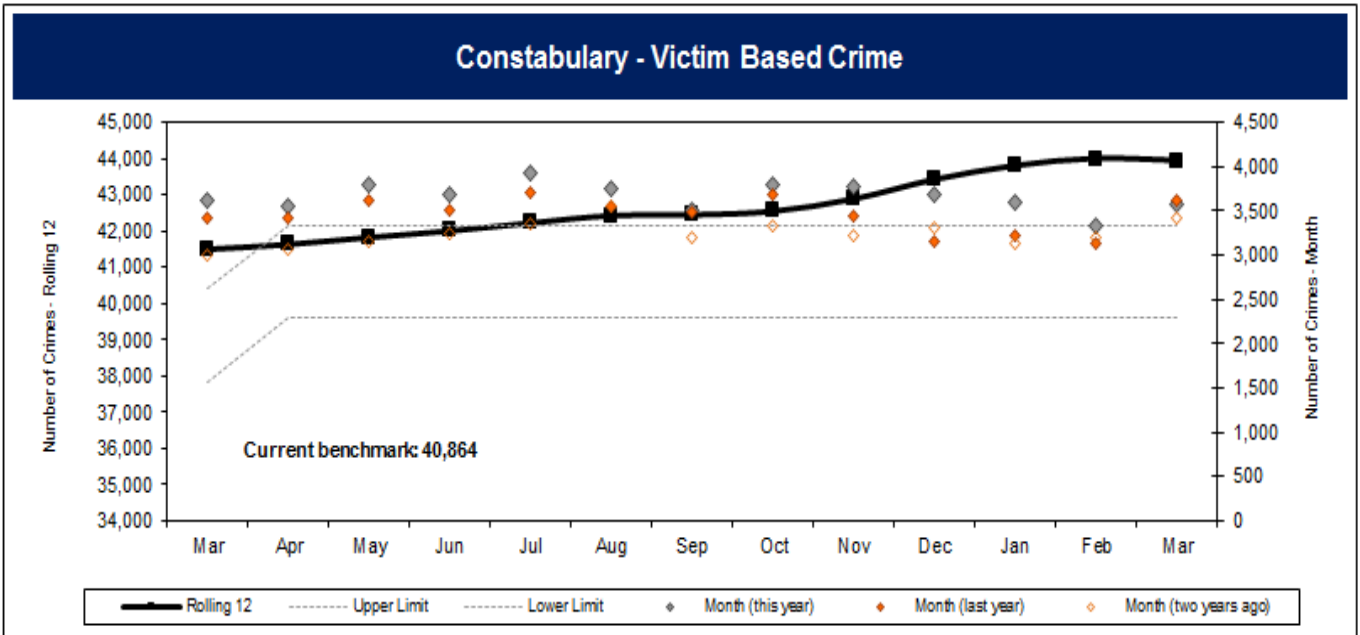




# NOT PROTECTIVELY MARKED

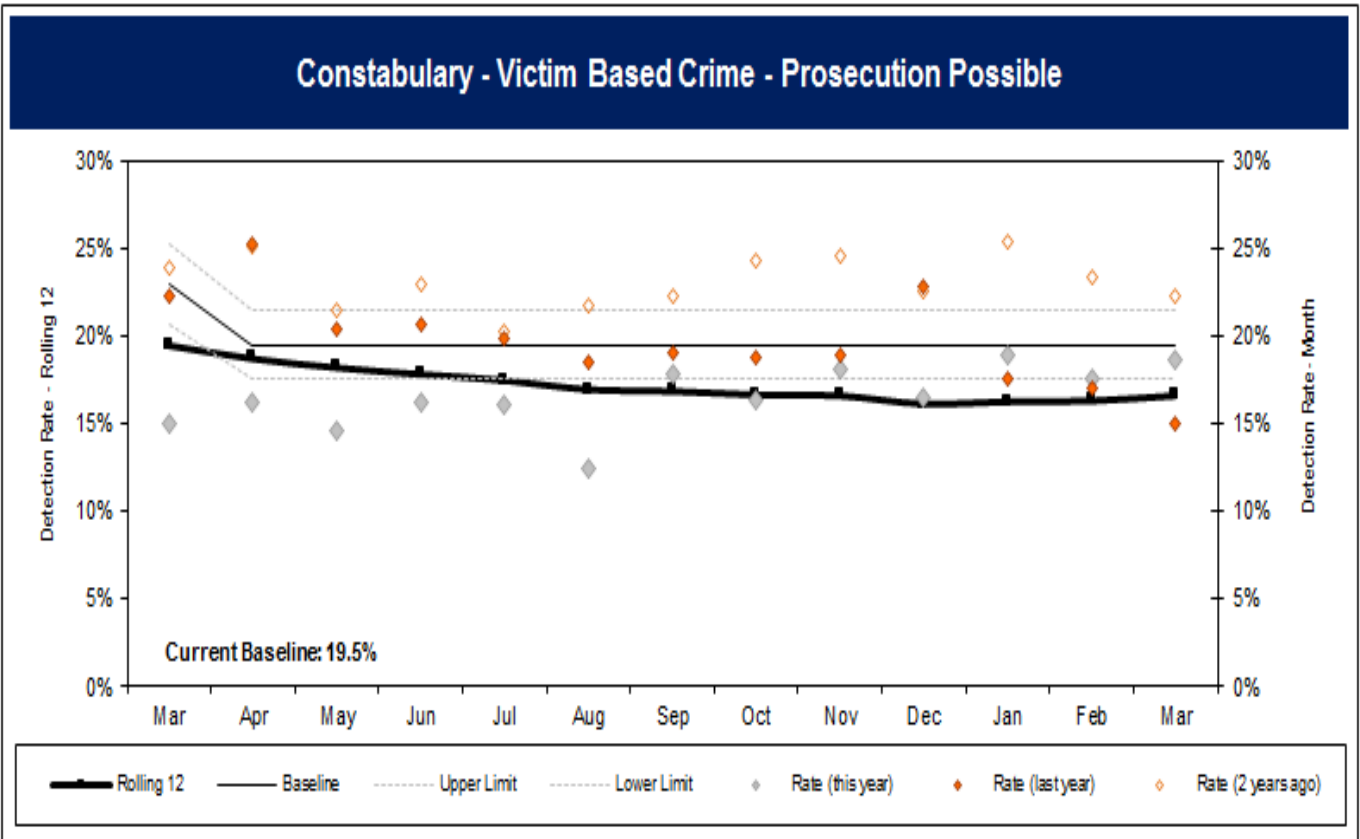
Current Month	Mar-15	Mar-14	Mar-13	Current v 1yr avg	Current v 3yr avg
3,569	3,623	3,429	3,001	Comparable	Comparable

Rolling 12 months	Baseline	Perf v Benchmark	MSF
43,935	41,524	Higher	Comparable



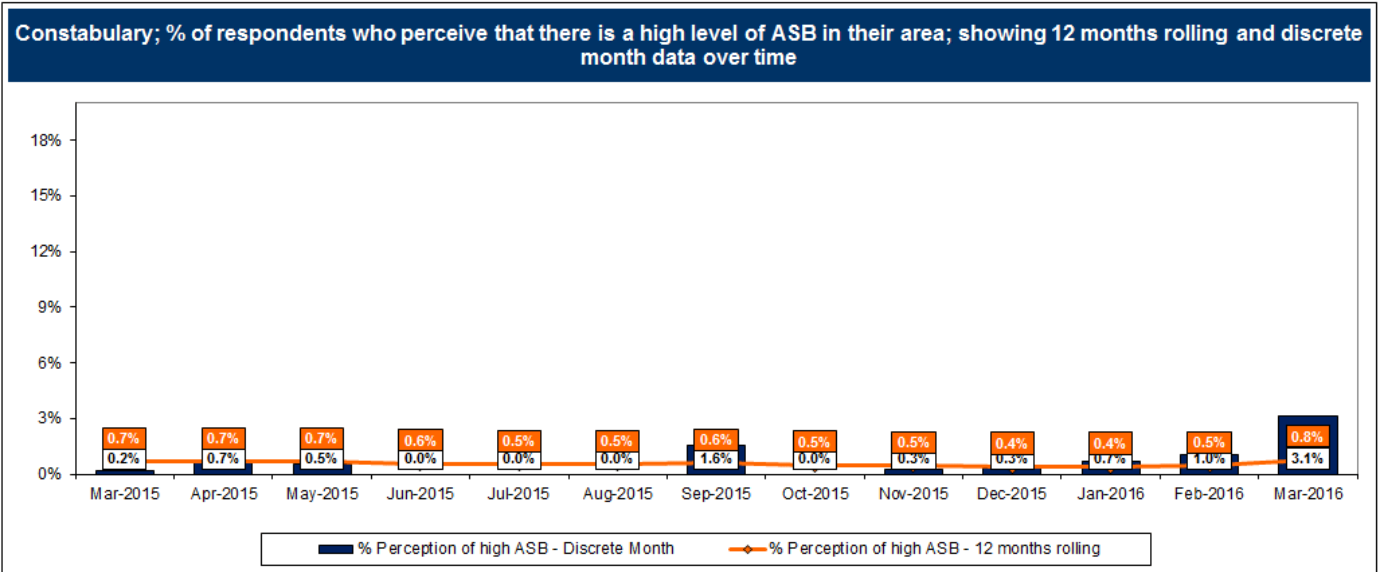
Current Month	Mar-15	Mar-14	Mar-13	Current v 1yr avg	Current v 3yr avg
18.7%	15.0%	22.3%	23.9%	Comparable	Lower

Rolling 12 months	Baseline	Perf v Benchmark	MSF
16.6%	19.5%	Lower	-



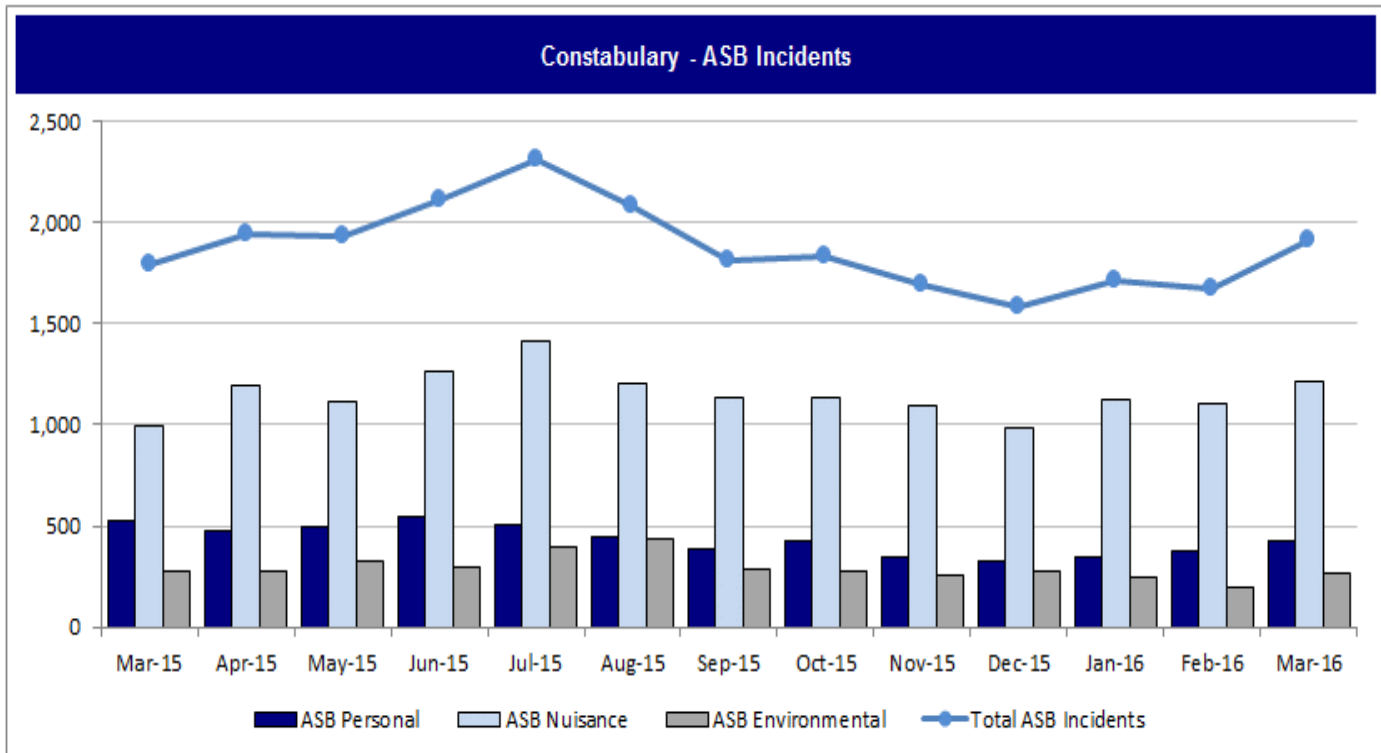
# NOT PROTECTIVELY MARKED

Current Month	Mar-15	Mar-14	Mar-13	Current v 1yr avg	Current v 3yr avg	Rolling 12 months	Baseline	Perf v Benchmark	MSF
3.1%	0.2%	130.0%	0.3%	Higher	Higher	0.8%	0.7%	Comparable	-



*Policing in Cambridgeshire Survey data to March 2016*

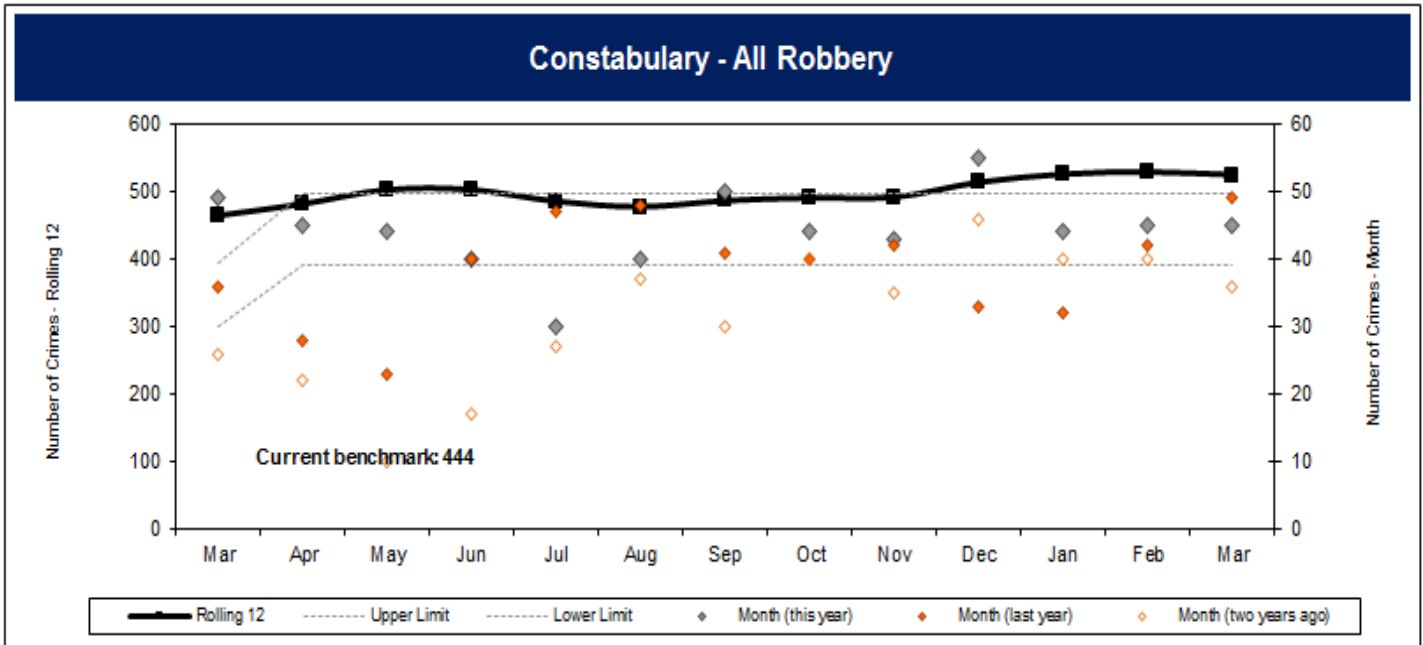
Current Month	Mar-15	Mar-14	Mar-13	Current v 1yr avg	Current v 3yr avg	Rolling 12 months	Baseline	Perf v Benchmark	MSF
1,911	1,796	2,236	2,069	Comparable	Comparable	22,613	24,582	Lower	-



# NOT PROTECTIVELY MARKED

Current Month	Mar-15	Mar-14	Mar-13	Current v 1yr avg	Current v 3yr avg
45	49	36	26	Comparable	Comparable

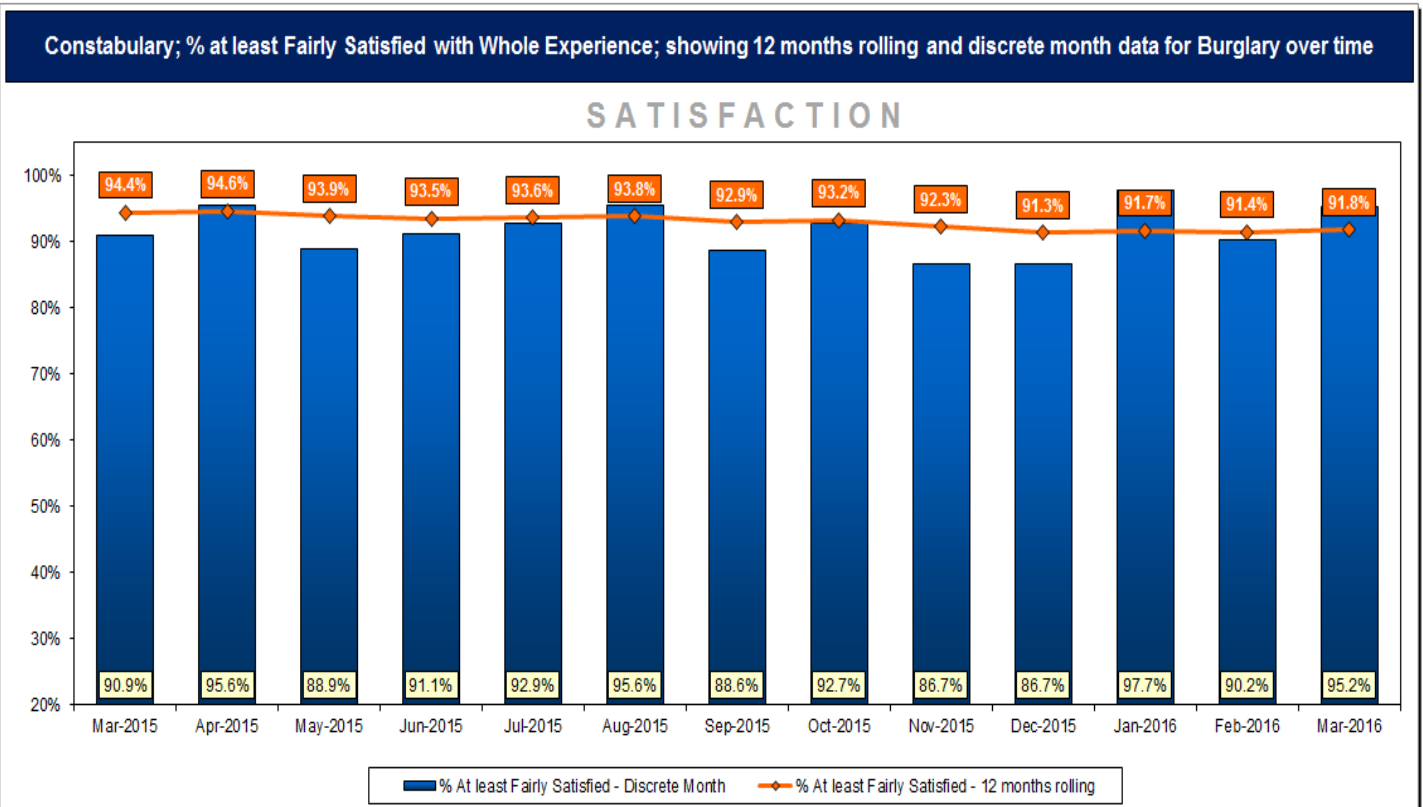
Rolling 12 months	Baseline	Perf v Benchmark	MSF
525	465	Higher	-



*Victim Satisfaction Survey data to March 2016*

Current Month	Mar-15	Mar-14	Mar-13	Current v 1yr avg	Current v 3yr avg
95.2%	90.9%	91.3%	96.8%	Comparable	Comparable

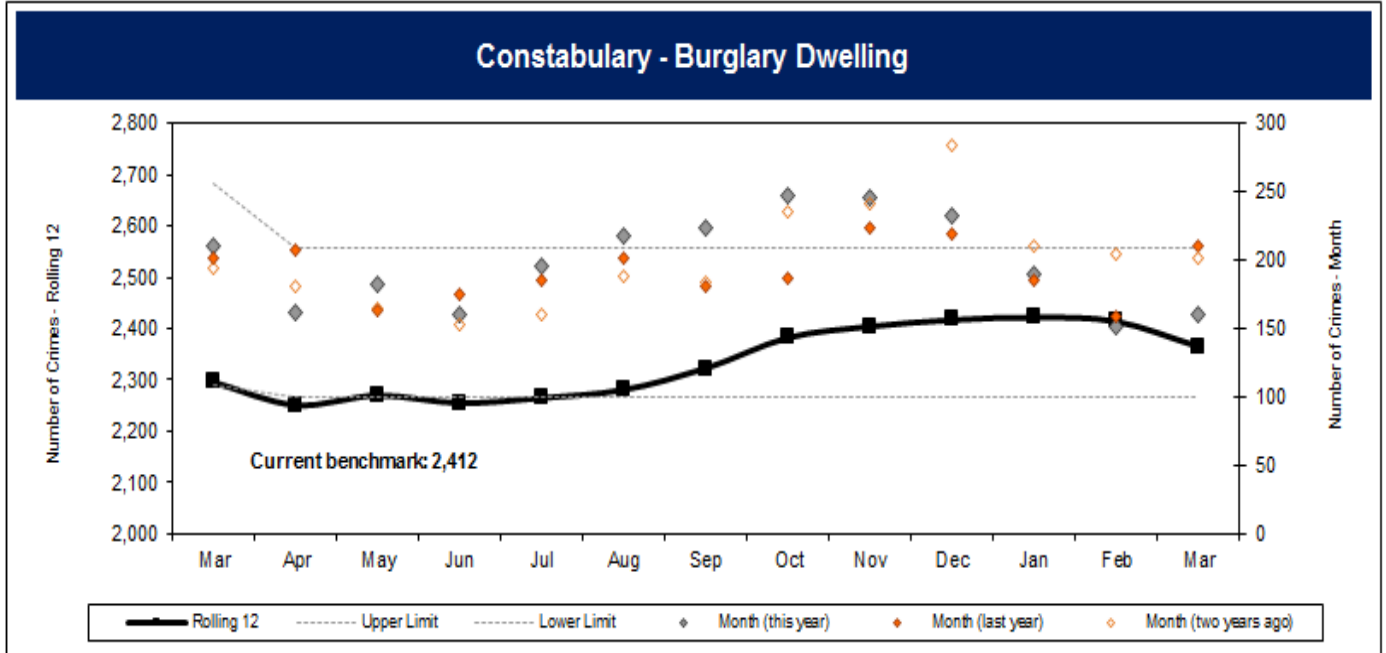
Rolling 12 months	Baseline	Perf v Benchmark	MSF
91.8%	94.4%	Lower	Comparable



NOT PROTECTIVELY MARKED

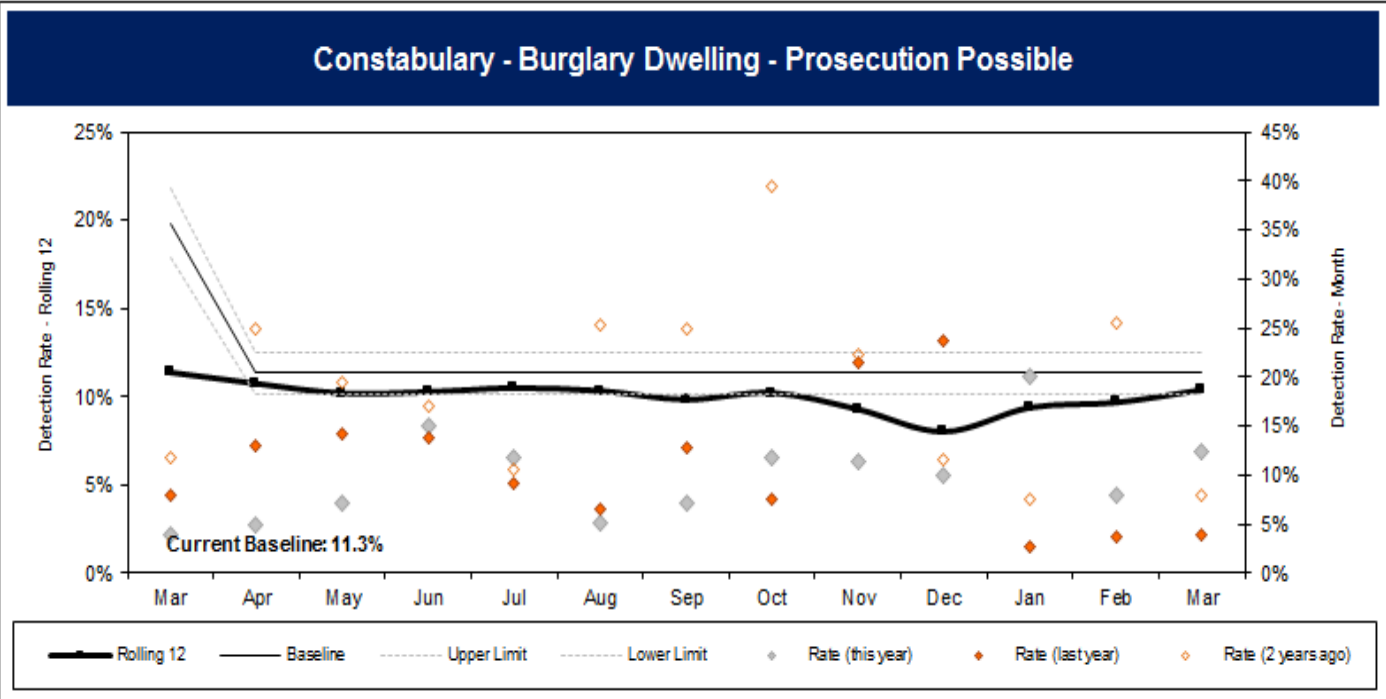
Current Month	Mar-15	Mar-14	Mar-13	Current v 1yr avg	Current v 3yr avg
161	210	202	194	Lower	Lower

Rolling 12 months	Baseline	Perf v Benchmark	MSF
2,366	2,296	Comparable	Higher



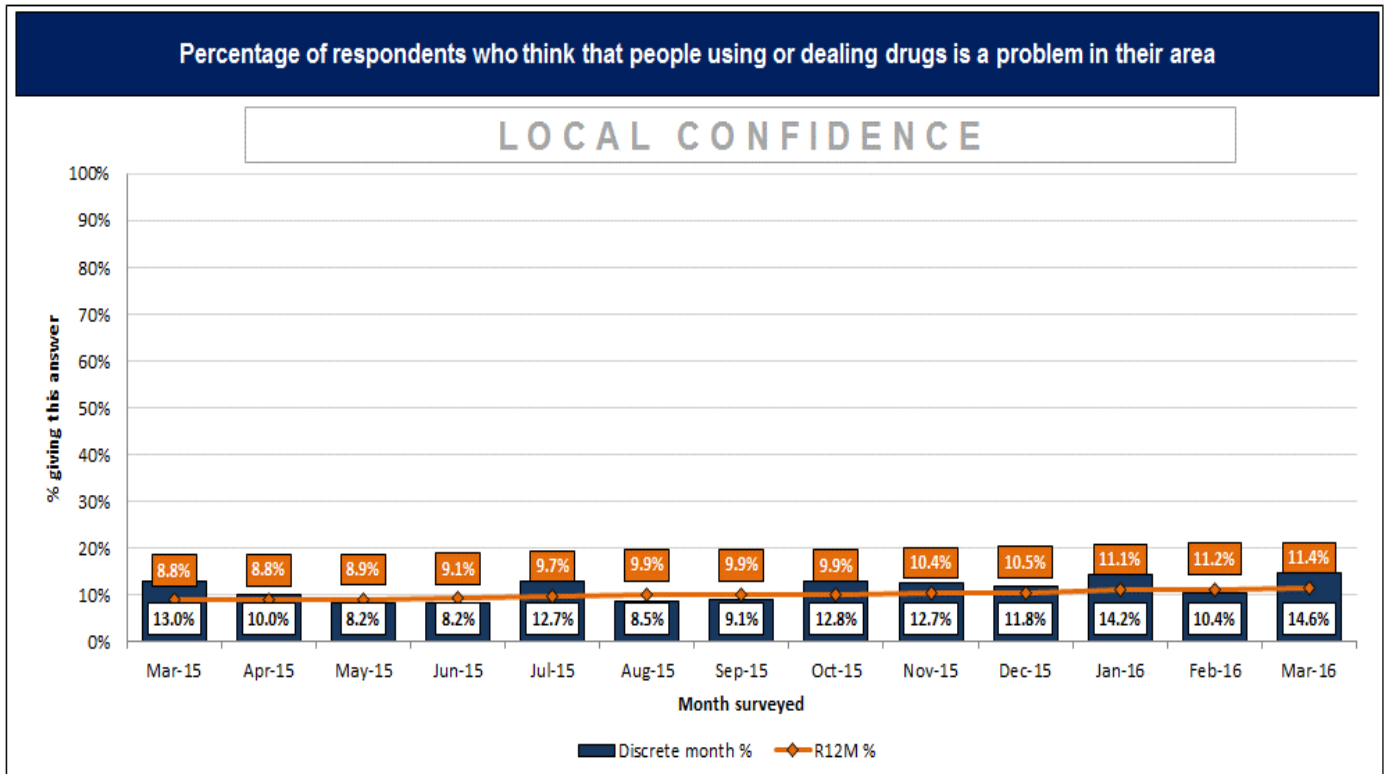
Current Month	Mar-15	Mar-14	Mar-13	Current v 1yr avg	Current v 3yr avg
12.4%	3.8%	7.9%	11.9%	Higher	Lower

Rolling 12 months	Baseline	Perf v Benchmark	MSF
10.4%	11.3%	Comparable	Higher



NOT PROTECTIVELY MARKED

Current Month	Mar-15	Mar-14	Mar-13	Current v 1yr avg	Current v 3yr avg	Rolling 12 months	Baseline	Perf v Benchmark	MSF
14.6%	13.0%	8.9%	7.9%	Higher	Higher	11.4%	8.8%	Higher	-

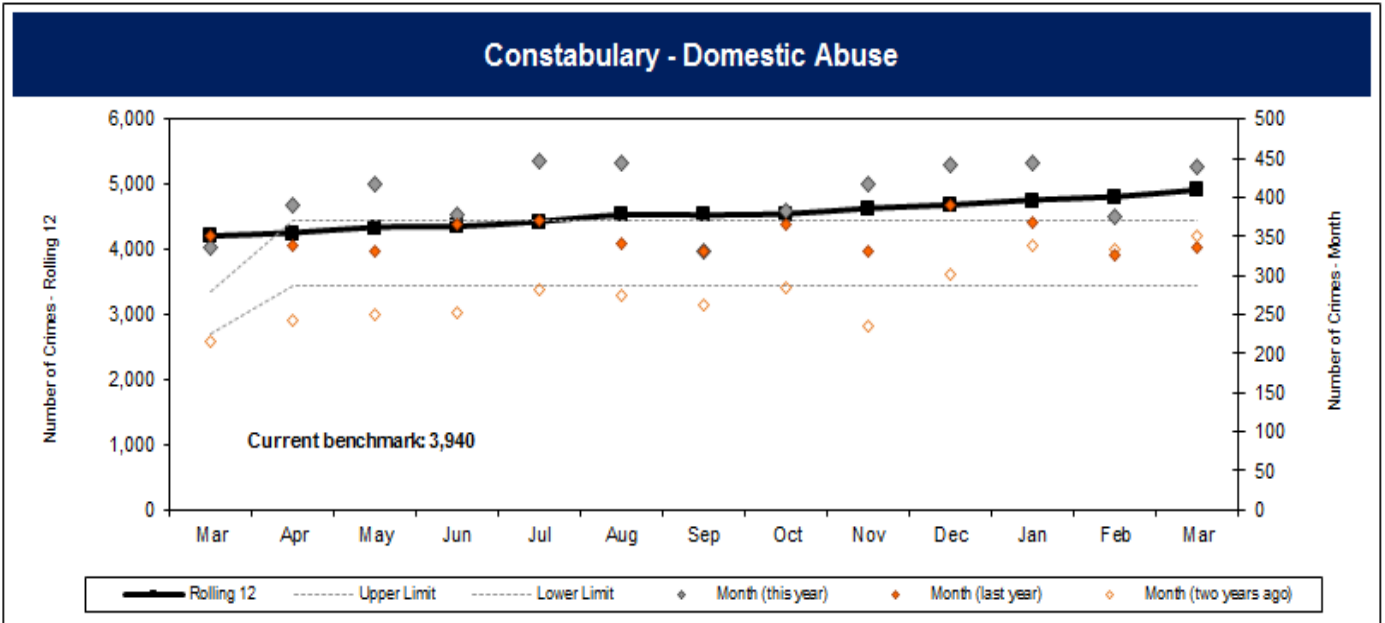


Policing in Cambridgeshire Survey data to March 2016

**KEEPING PEOPLE SAFE**

Current Month	Mar-15	Mar-14	Mar-13	Current v 1yr avg	Current v 3yr avg
439	335	350	215	Higher	Higher

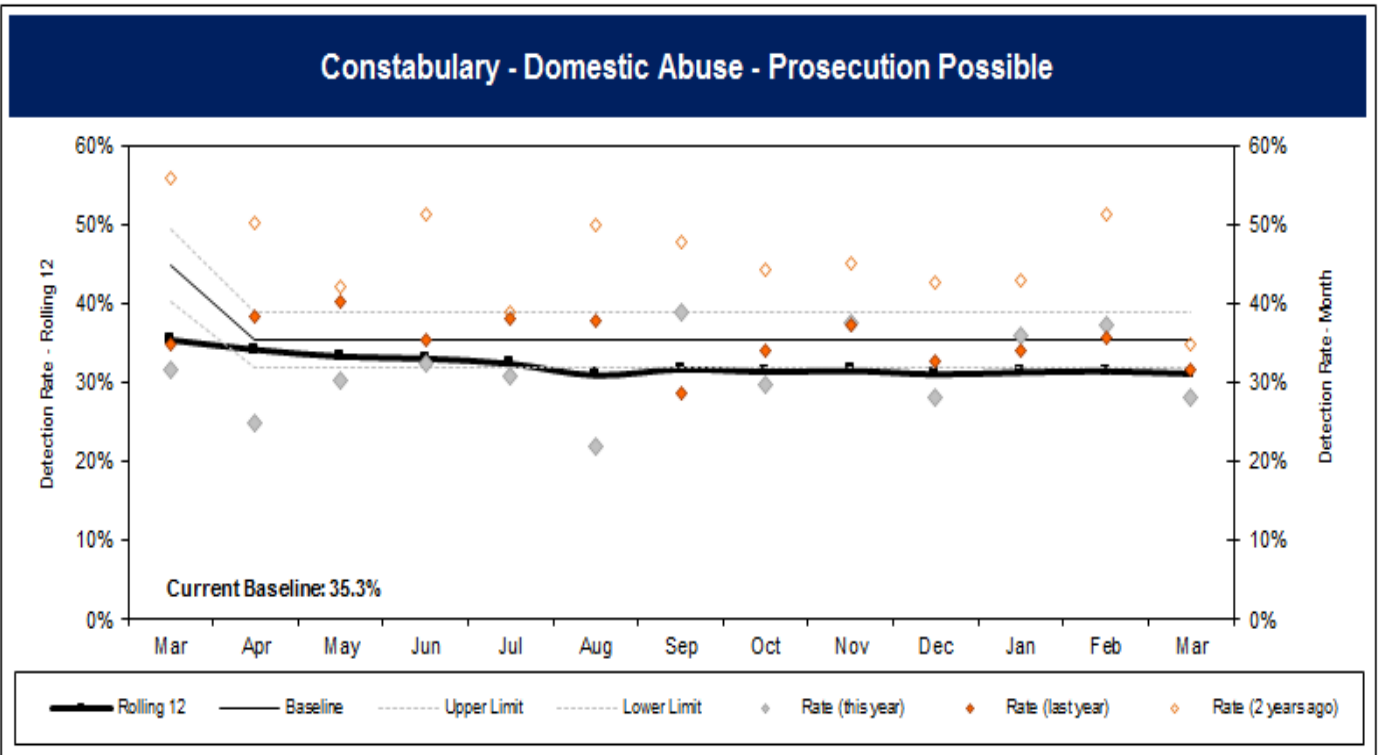
Rolling 12 months	Baseline	Perf v Benchmark	MSF
4,901	4,197	Higher	-



*As the Constabulary proactively encourages victims of Domestic Abuse to confidently seek our help, an increase in this offence type may not necessarily be a negative indicator.*

Current Month	Mar-15	Mar-14	Mar-13	Current v 1yr avg	Current v 3yr avg
28.0%	31.6%	34.9%	55.8%	Lower	Lower

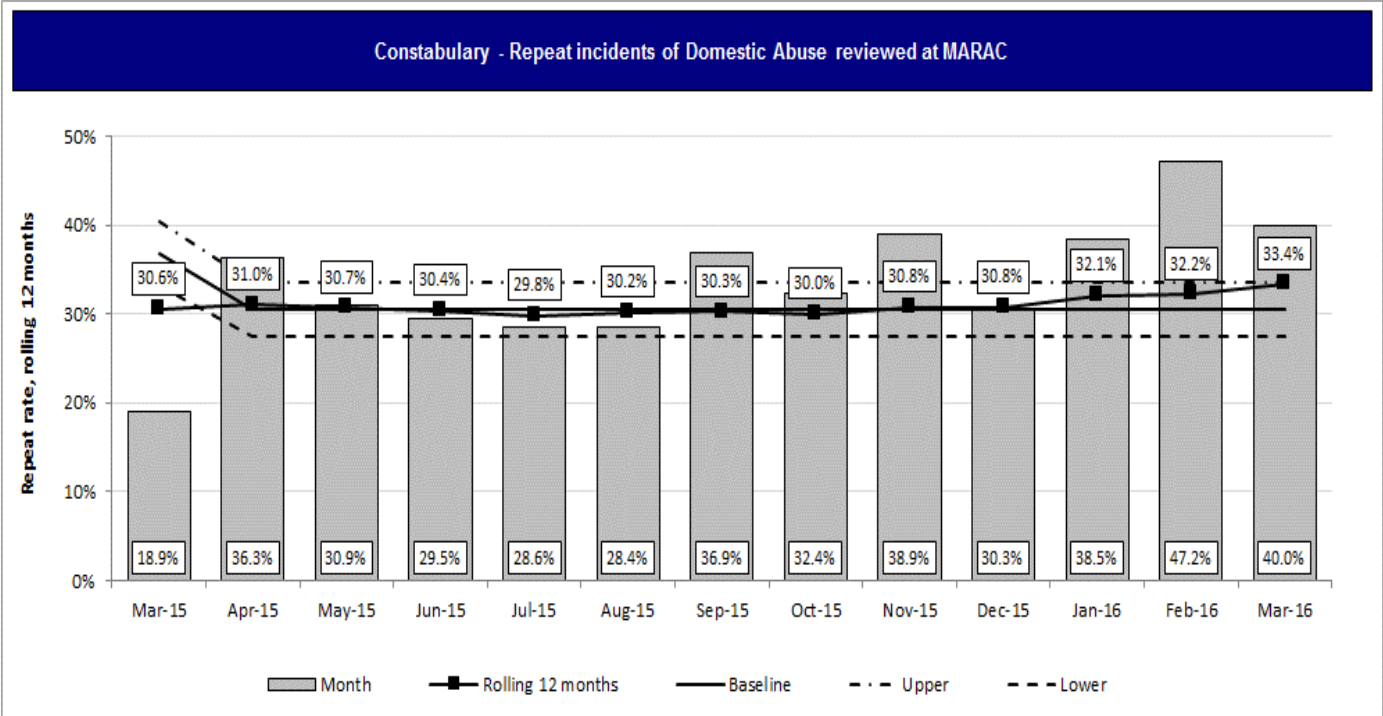
Rolling 12 months	Baseline	Perf v Benchmark	MSF
31.1%	35.3%	Lower	-



# NOT PROTECTIVELY MARKED

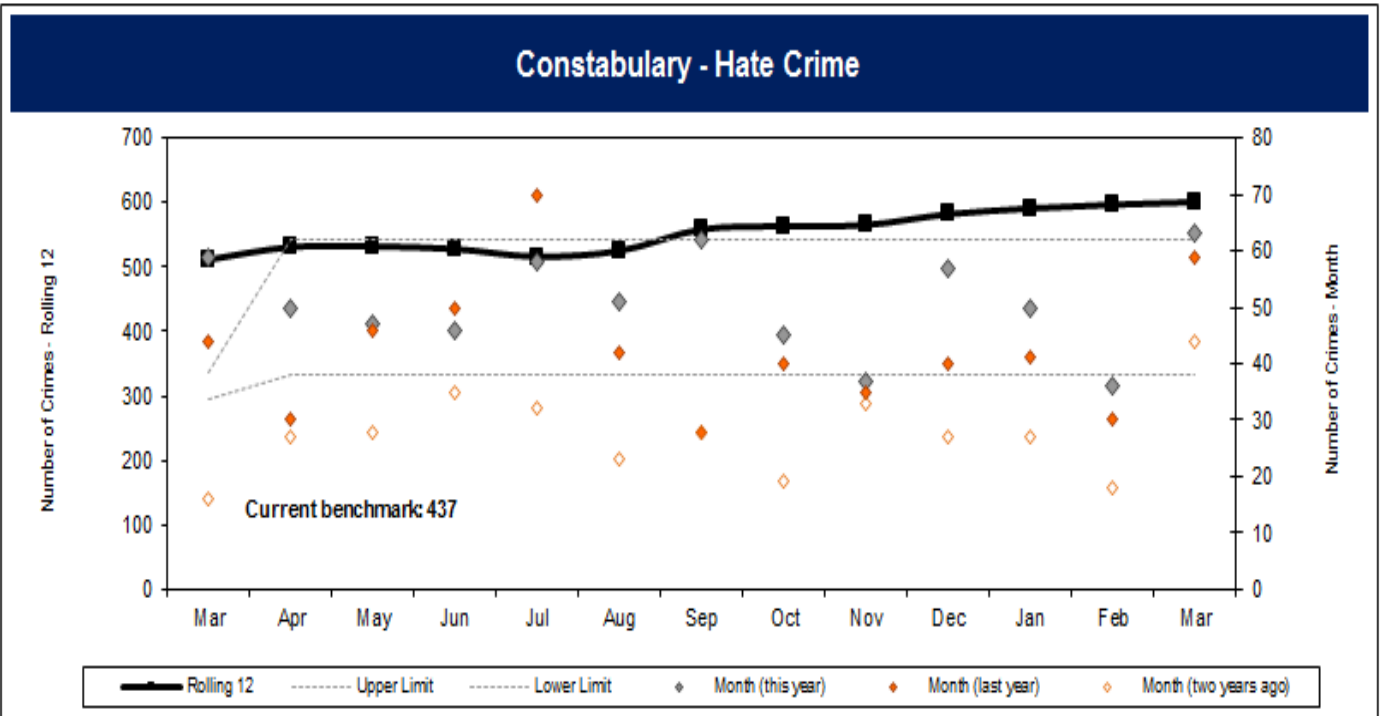
Current Month	Mar-15	Mar-14	Mar-13	Current v 1yr avg	Current v 3yr avg
40.0%	18.9%	34.5%	34.9%	Higher	Higher

Rolling 12 months	Baseline	Perf v Benchmark	MSF
33.4%	30.6%	Comparable	-



Current Month	Mar-15	Mar-14	Mar-13	Current v 1yr avg	Current v 3yr avg
63	59	44	16	Higher	Higher

Rolling 12 months	Baseline	Perf v Benchmark	MSF
602	511	Higher	-

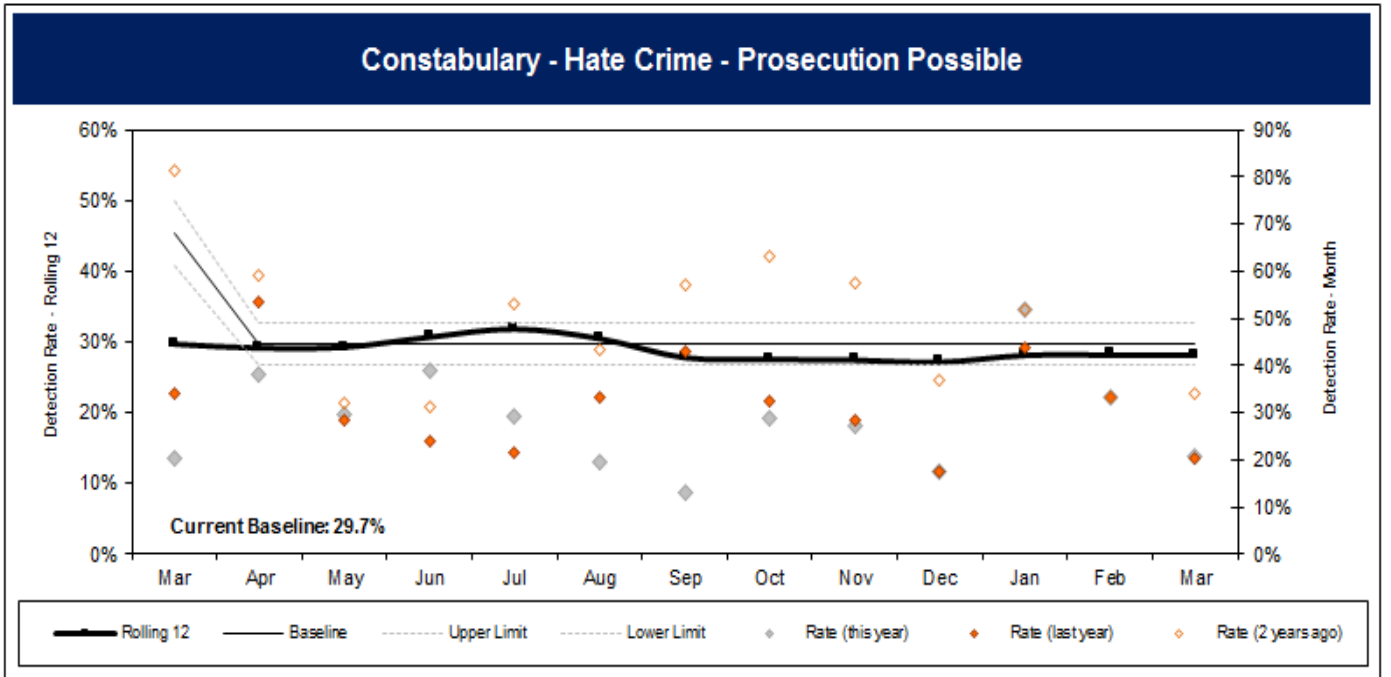


*As the Constabulary proactively encourages victims of Hate Crime to confidently seek our help, an increase in this offence type may not necessarily be a negative indicator.*

# NOT PROTECTIVELY MARKED

Current Month	Mar-15	Mar-14	Mar-13	Current v 1yr avg	Current v 3yr avg
20.6%	20.3%	34.1%	81.3%	Lower	Lower

Rolling 12 months	Baseline	Perf v Benchmark	MSF
28.2%	29.7%	Comparable	-

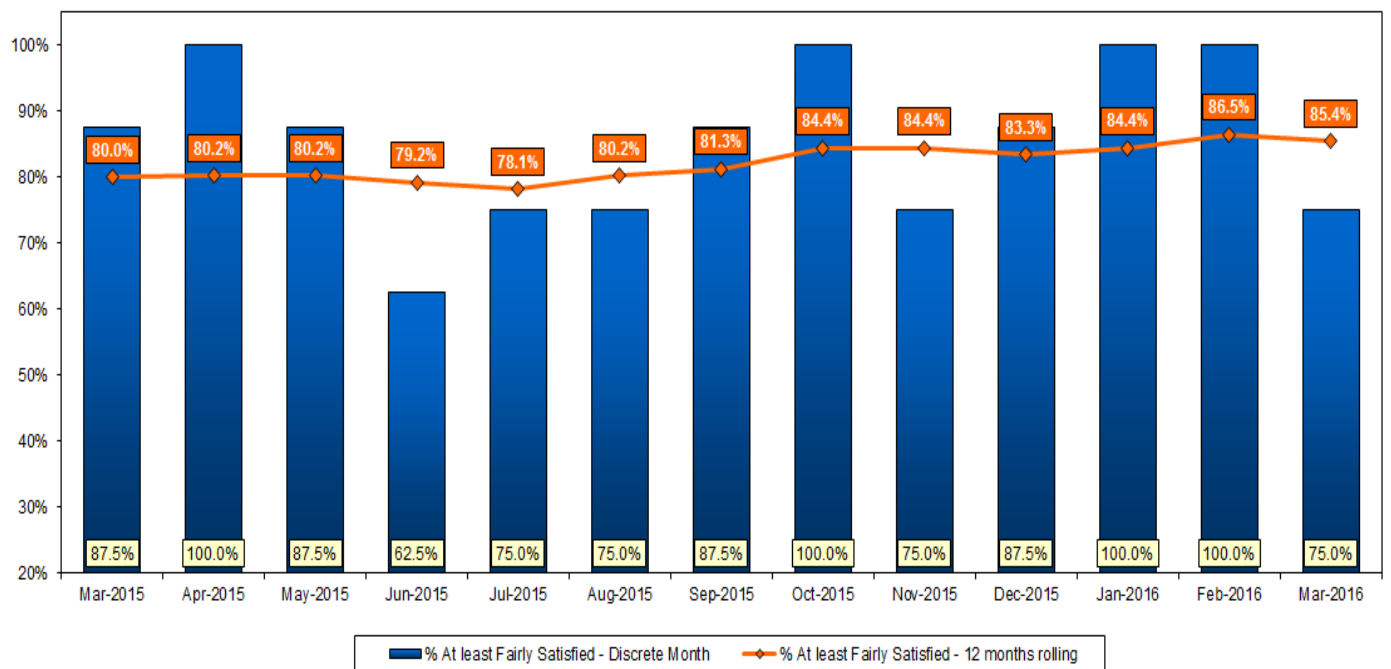


Current Month	Mar-15	Mar-14	Mar-13	Current v 1yr avg	Current v 3yr avg
75.0%	87.5%	87.5%	69.2%	Comparable	Comparable

Rolling 12 months	Baseline	Perf v Benchmark	MSF
85.4%	80.0%	Comparable	Higher

Constabulary; % at least Fairly Satisfied with Whole Experience; showing 12 months rolling and discrete month data for Hate Incident over time

## SATISFACTION



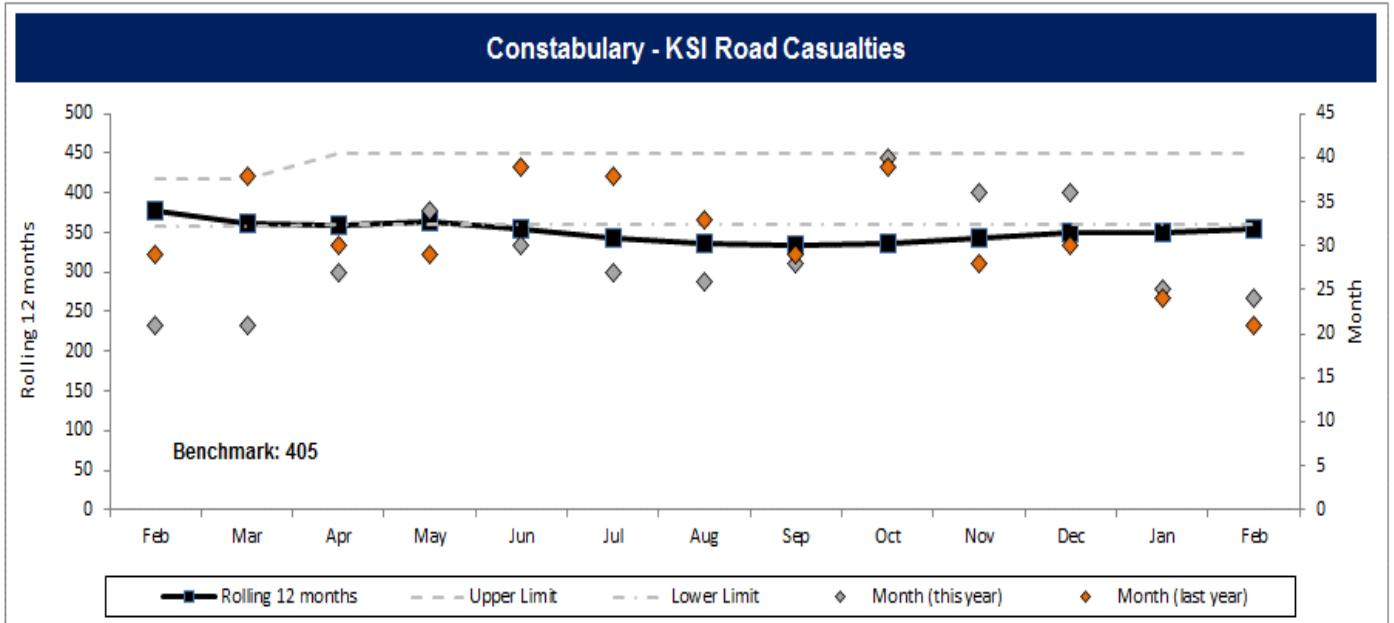
Victim Satisfaction Survey data to March 2016



**MAINTAIN THE RESILIENCE OF PROTECTIVE SERVICES**

Feb-16	Feb-15	Feb-14	Feb-13	Current v 1yr avg	Current v 3yr avg
24	21	29	25	Comparable	Comparable

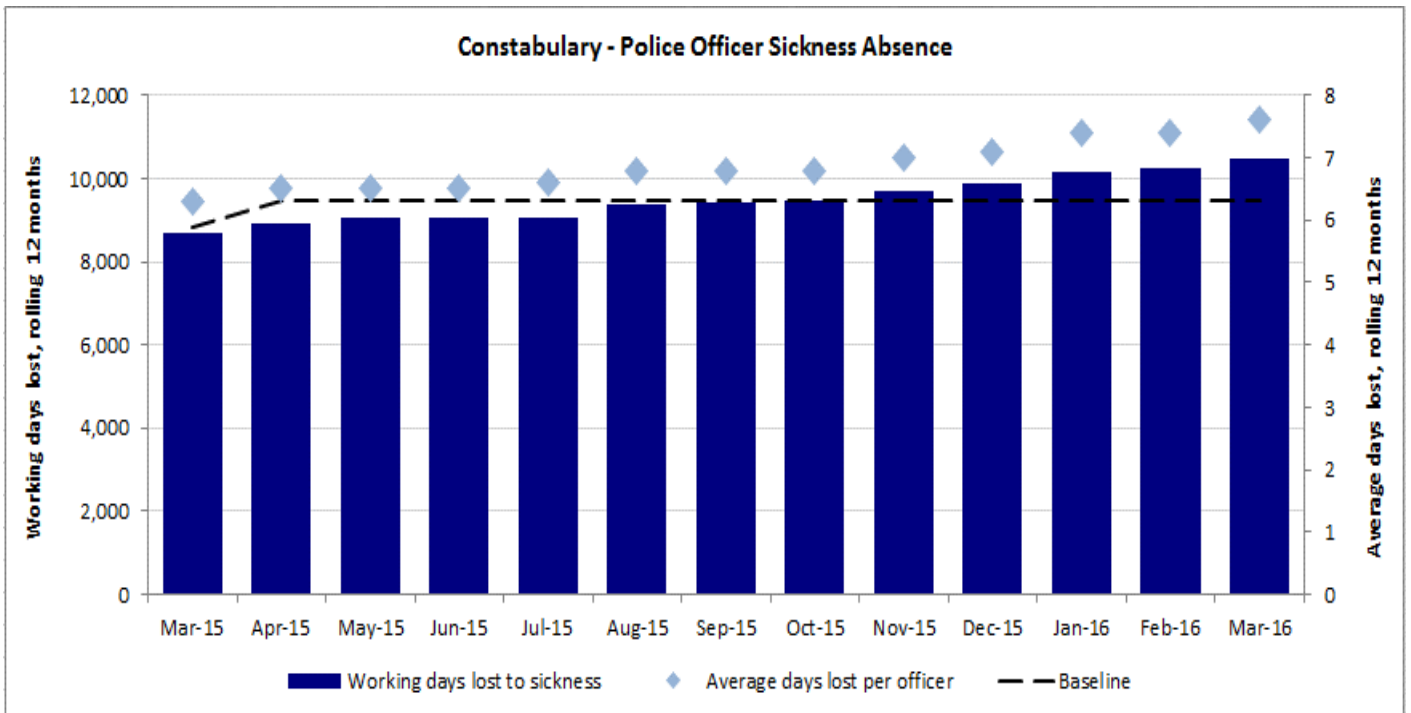
Rolling 12 months	Baseline	Perf v Benchmark	MSF
354	361	Lower	Comparable



ORGANISATIONAL HEALTH

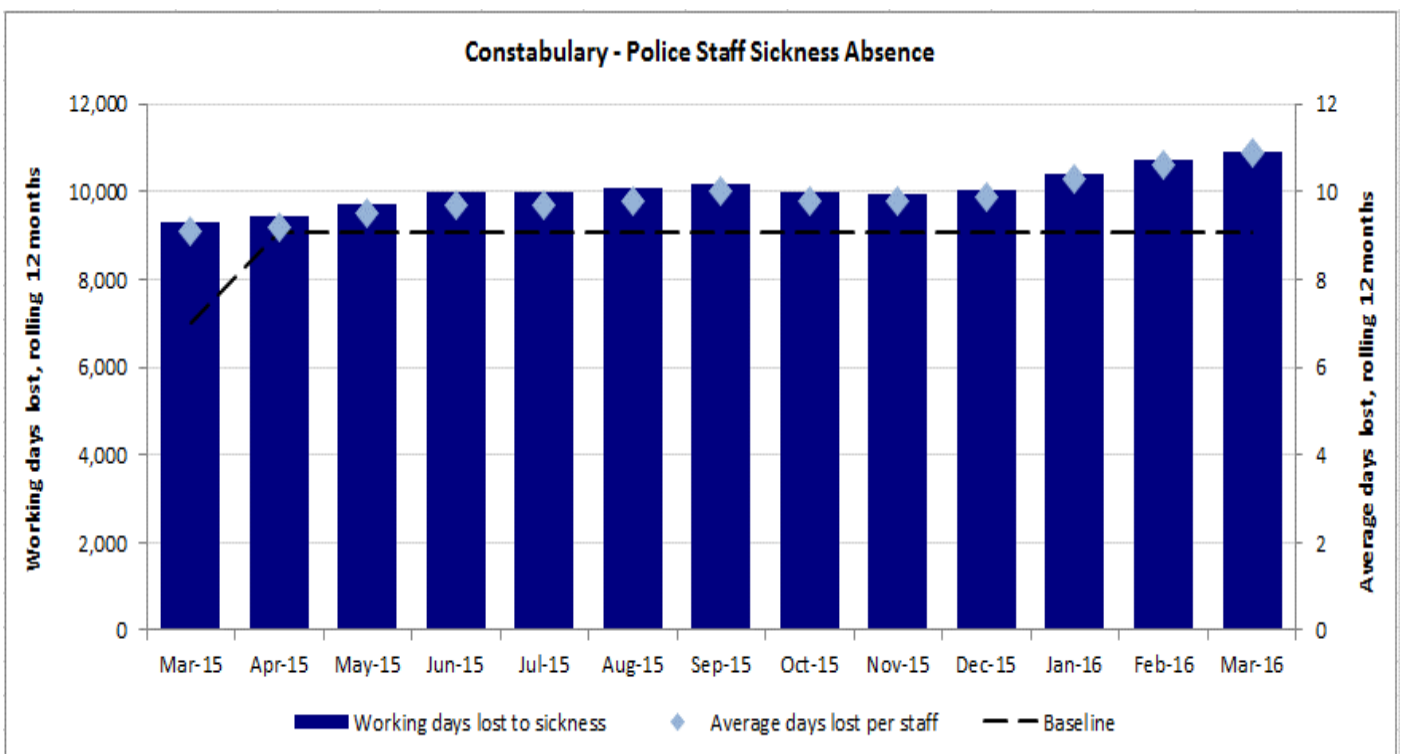
Current Month	Mar-15	Mar-14	Mar-13	Current v 1yr avg	Current v 3yr avg
0.8	0.7	0.5	0.5	Higher	Higher

Rolling 12 months	Baseline	Perf v Benchmark	MSF
7.6	6.3		Below national average

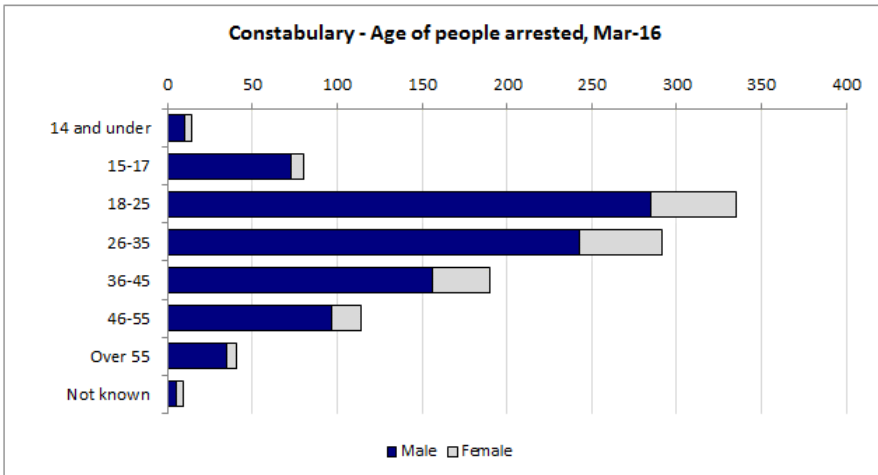


Current Month	Mar-15	Mar-14	Mar-13	Current v 1yr avg	Current v 3yr avg
0.8	0.7	0.6	0.7	Comparable	Comparable

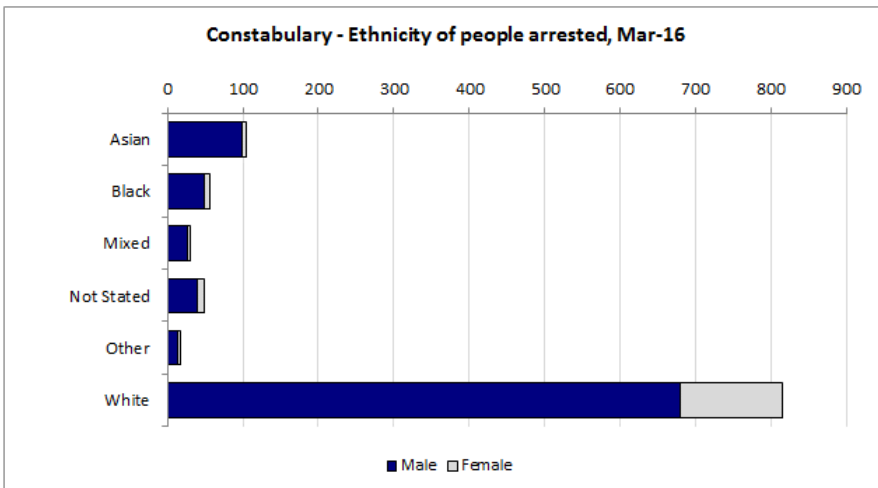
Rolling 12 months	Baseline	Perf v Benchmark	MSF
10.9	9.1		Above national average



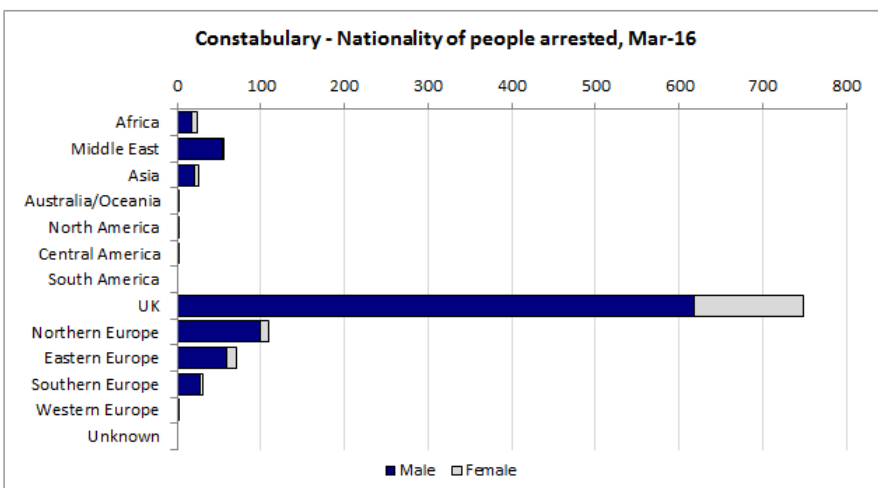
ARRESTS



SUMMARY - AGE		
	Mar-16	Rolling 12 *
14 and under	1.3%	1.6%
15-17	7.4%	7.0%
18-25	31.2%	28.1%
26-35	27.1%	29.9%
36-45	17.7%	18.5%
46-55	10.6%	9.6%
Over 55	3.8%	3.6%
Not known	0.8%	1.5%
<b>TOTAL ARRESTS</b>	<b>1,074</b>	<b>12,318</b>
<b>Juveniles</b>	<b>8.8%</b>	<b>8.6%</b>



SUMMARY - ETHNICITY		
	Mar-16	Rolling 12 *
Asian	9.8%	7.9%
Black	5.3%	6.0%
Mixed	2.9%	2.7%
Not Stated	4.5%	5.4%
Other	1.7%	1.8%
White	75.9%	76.2%
<b>TOTAL ARRESTS</b>	<b>1,074</b>	<b>12,318</b>

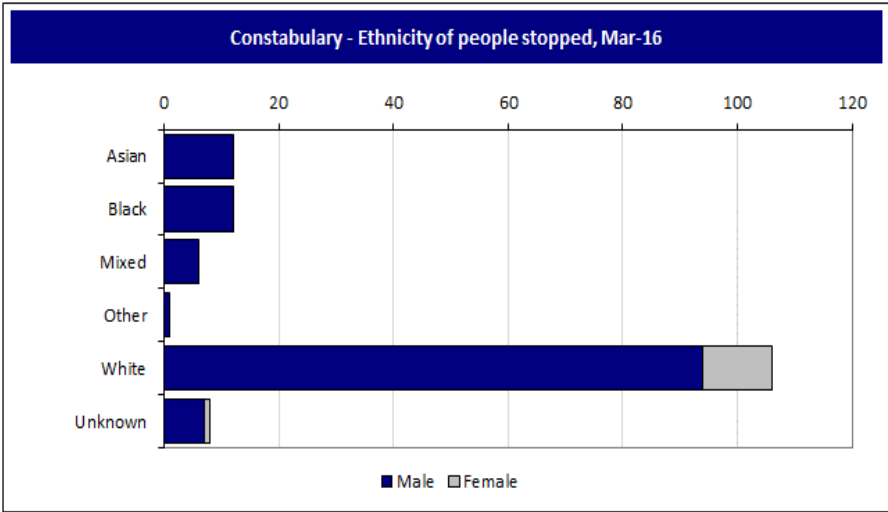


SUMMARY - NATIONALITY		
	Mar-16	Rolling 12 *
Africa	2.2%	2.5%
Middle East	5.2%	4.1%
Asia	2.4%	2.6%
Australia/Oceania	0.1%	0.1%
North America	0.2%	0.2%
Central America	0.3%	0.2%
South America	0.0%	0.0%
Total America	0.5%	0.5%
UK	69.7%	70.4%
Northern Europe	10.1%	10.1%
Eastern Europe	6.6%	7.1%
Southern Europe	2.9%	2.0%
Western Europe	0.2%	0.3%
Europe (excl UK)	19.8%	19.5%
Europe (incl UK)	89.6%	89.9%
Unknown	0.0%	0.3%

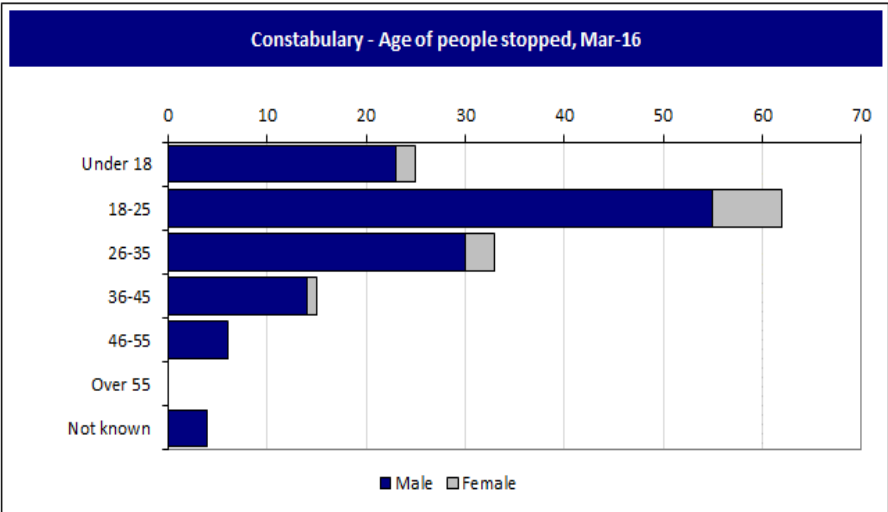
\* Current rolling 12 months to March 2016

Data from NSPIS Custody

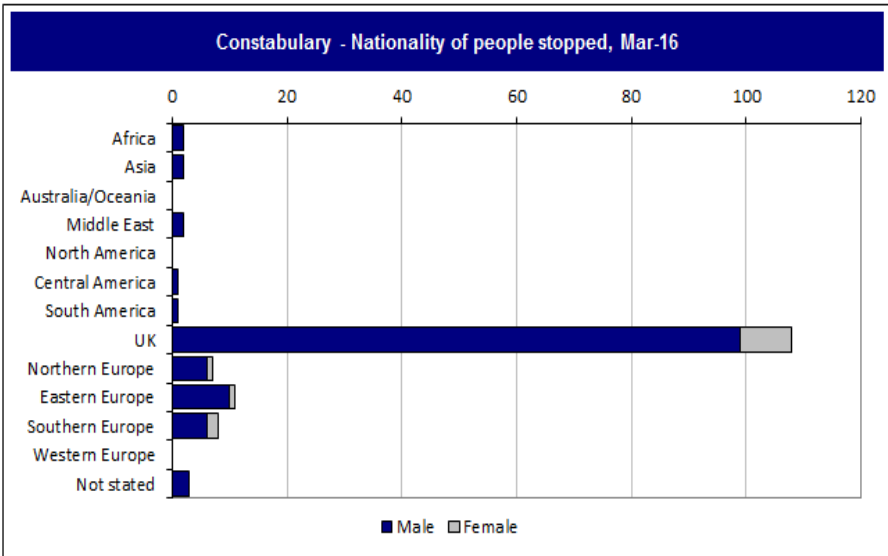
STOP SEARCHES



SUMMARY - ETHNICITY		
	Mar-16	Rolling 12
Asian	8.3%	8.5%
Black	8.3%	6.0%
Mixed	4.1%	2.6%
Other	0.7%	0.5%
White	73.1%	73.9%
Unknown	5.5%	8.5%
<b>TOTAL</b>	<b>145</b>	<b>3,098</b>



SUMMARY - AGE		
	Mar-16	Rolling 12
Under 18	17.2%	21.9%
18-25	42.8%	43.3%
26-35	22.8%	21.8%
36-45	10.3%	8.4%
46-55	4.1%	3.1%
Over 55	0.0%	0.8%
Not known	2.8%	0.8%
<b>TOTAL</b>	<b>145</b>	<b>3,098</b>



SUMMARY - NATIONALITY		
	Mar-16	Rolling 12
Africa	1.4%	1.2%
Asia	1.4%	2.2%
Australia/Oceania	0.0%	0.1%
Middle East	1.4%	0.6%
North America	0.0%	0.1%
Central America	0.7%	0.2%
South America	0.7%	0.0%
Total America	1.4%	0.3%
UK	74.5%	75.9%
Northern Europe	4.8%	6.2%
Eastern Europe	7.6%	7.3%
Southern Europe	5.5%	2.3%
Western Europe	0.0%	0.2%
Europe (excl UK)	17.9%	16.0%
Europe (incl UK)	92.4%	91.9%
Not stated	2.1%	3.8%

\* Current rolling 12 months to March 2016

Data from Stop Search database

# NOT PROTECTIVELY MARKED

## INFORMATION SHEET

### POLICE AND CRIME PLAN INDICATORS

	Indicator Name	Data used	Peer comparison data (iQuanta)
<b>Maintain local police performance</b>	Dealing with Local Concerns	Policing in Cambridgeshire survey data (conducted via telephone interviews). Data to March 2016	Data to December 2015
	Satisfaction with Service Delivery	Victim satisfaction surveys (conducted via telephone interviews). Data to March 2016	Data to December 2015
	Special Constabulary	Strength data from ORIGIN, hours worked from DutySheet. Data to March 2016	n/a
	999 calls answered	Call handling data. Data to March 2016	n/a
	Non emergency calls answered	Call handling data. Data to March 2016	n/a
<b>Continue to tackle crime and disorder</b>	All Recorded Crime	Police recorded crime. Data to March 2016	Data to March 2016
	All Crime Prosecution Possible Outcome Rate	Police recorded crime. Data to March 2016	Data to March 2016
	Victim-Based Crime	Police recorded crime. Data to March 2016	Data to March 2016
	Victim-Based Crime Prosecution Possible Outcome Rate	Police recorded crime. Data to March 2016	n/a
	Perception of high anti-social behaviour	Policing in Cambridgeshire survey data (conducted via telephone interviews). Data to March 2016	n/a
	Level of Anti-social behaviour	Police recorded incident data. Data to March 2016	n/a
	Robbery	Police recorded crime. Data to March 2016	Data to March 2016
	Satisfaction with Service Delivery - Burglary Dwelling	Victim satisfaction surveys (conducted via telephone interviews). Data to March 2016	Data to December 2015
	Burglary Dwelling	Police recorded crime. Data to March 2016	Data to March 2016
	Burglary Dwelling Prosecution Possible Outcome Rate	Police recorded crime. Data to March 2016	Data to March 2016
	Perception of drug misuse	Policing in Cambridgeshire survey data (conducted via telephone interviews). Data to March 2016	n/a
<b>Keeping people safe</b>	Domestic Abuse Crime	Police recorded crime. Data to March 2016	n/a
	Domestic Abuse Prosecution Possible Outcome Rate	Police recorded crime. Data to March 2016	n/a
	Repeat Incidents of Domestic Abuse Reviewed at MARAC	MARAC Data - Data to March 2016	n/a
	Hate Crime	Police recorded crime. Data to March 2016	n/a
	Hate Crime Prosecution Possible Outcome Rate	Police recorded crime. Data to March 2016	n/a
	Satisfaction with Service Delivery - Hate Incidents	Policing in Cambridgeshire survey data (conducted via telephone interviews). Data to March 2016	Data to December 2015
<b>Maintain the resilience of protective services</b>	KSI Road Casualties	Cambridgeshire County Council data to February 2016	Data to September 2015
<b>Organisational Health</b>	Police officers sickness absence rate	Sickness data from ORIGIN. Data to March 2016	Data to September 2015
	Police staff sickness absence rate	Sickness data from ORIGIN. Data to March 2016	Data to September 2015

### OTHER PERFORMANCE INDICATORS

	Indicator Name	Data used	Peer comparison data (iQuanta)
<b>Arrests</b>	Age, ethnicity and nationality of detainees	Data from NSPIS Custody. Data to March 2016	n/a
<b>Stop Search</b>	Age and ethnicity of people stop searched	Data from Stop Search database and NSPIS Custody. Data to March 2016	n/a