



The Grand Pavilion Technical Specifications

Updated Jan 2023

Contents

Contact Details.....	3
Seating Capacity.....	3
Access.....	3
Stage Information & Dimensions.....	4
Flying.....	4
Stage Equipment.....	4
Stage Management.....	5
Wardrobe.....	5
Dressing Rooms.....	5
Lighting.....	5
Lighting Controls.....	5
Dimmers.....	6
FOH LX Rig.....	6
Stage Lighting Stock.....	6
Video.....	6
Sound.....	7
Sound Position.....	7
Mixing Desks.....	7
Permanent Sound Rig.....	7
Stage Door Suite Technical Spec.....	8
Brief.....	8
Lighting.....	8
Sound.....	8
Dimensions.....	8
How to Find the Grand Pavilion	9
Appendix A (Seating Plan).....	10
Appendix B (Fly Grid Plan)	11
Appendix C (Default Lighting Plan).....	12
Appendix D Main Hall Images	13
Appendix E Stage Door Images.....	14

Contact Details

All queries from visiting companies should initially be directed to:

The Grand Pavilion Technical Office

Technical@awen-wales.com

01656815985

Richard Shrubb – Technical Production Manager

Richard.shrubb@awen-wales.com

The Grand Pavilion

The Esplanade

Porthcawl

Cf36 3YW

www.grandpavilion.co.uk

Seating Capacity

Theatre: 675

The following number of seats will be lost in the stalls for:

Sound Desk at rear right of stalls -14 seats.

Please see appendix A for seating plan.

Access

The Grand Pavilion is a (front-loading) venue. We do NOT have a loading bay to stage. On arrival please park in the car park (adjacent) to the building.

If you are traveling with a tour bus or a large HGV please inform the technical team prior to your arrival.

Please note: The access to the main hall / stage is across the foyer area, through a double fire door Height 2.1m Width 1.65m. Ramp access is via a (single fire door) Height 2m Width 0.75m.

Stage Information & Dimensions

The stage is a raked plywood finished floor painted black, painting the stage is not permitted fixing/screwing to the stage by prior agreement.

Proscenium width 9.325m

Proscenium height (opening) 4.134m

Setting line (safety curtain) to back wall 7.134m

Front of stage to back wall 7.818m

Stage width 10.027m

Distance between Black Leg Masking on Standard Setup 8m

Height to grid 7.883m (NB - due to the stage being raked floor to grid height may vary.)

LX Bar max out approx. 4.9m

Flying

The Grand Pavilion has 16 hemp fly bars, 4 hand winched IWBs and a single hand winched storage bar, all operated from stage right. Please be advised that (Only Awen technical staff are permitted to operate any of the house flying system).

All hemp fly bars are 48mm diameter Aluminium tubes and have a maximum SWL rating of 70kg (uniformly distributed load).

All the winched IWBs have a maximum SWL rating of 200kg (uniformly distributed load).

See Appendix B for grid plan.

Stage Equipment

2x zarges A frame ladders

4x pairs of black wool serge legs

3x black wool serge borders

2x pairs of black wool serge half tabs

1x white cyclorama

12x black finished 8x4 steel deck

5x single swipe t60 tracks

3x tabbed EEE tracks

4x tank traps with single tubes

There is also a selection of braces, stage weights, conduit pipes and Scaff legs.

Stage Management

Our prompt desk is fixed stage left with access to: main house tab motor control, safety curtain release, coms, show relay talk back and mains 13a power.

Wardrobe

There is a small washing machine and tumble dryer on site available on request.

Iron and ironing boards are also available.

Dressing rooms

We have 7 dressing rooms (Total Capacity of 24 persons) all of which have lockable doors (on request). Back stage and dressing rooms have key coded doors to prevent unauthorised access.

All dressing rooms have access to hot/cold water, fresh towels, iron/ ironing boards as mentioned above; tea/coffee facility's and lit mirrors.

Lighting

Lighting Control

- 1x ETC Ion XE desk.
- 1x Etc Ion Xe fader wing (20).
- 1x DMX tie line from control room and rear of hall to stage.
- 2x Cat5 tie lines from control room and rear of hall to stage.
- 4x 8 way swisson DMX splitters (Universe 1&2).
- 1x Mk2 DMX Gateway.

NB – The lighting rig in the main hall is a combination of tungsten and LED. This is split over 4 universes. Each lighting bar has universe 1&2 and 15a outputs.

Universe 1 – Fresnel's, Profiles, par cans, battens.

Universe 2 – Moving lights and Hazers.

Universe 3 – Dimmers.

Universe 4 – House lights.

Dimmers

All dimmer are Zero88 Chilli 24

- Lx1 channel 1-12
- Lx2 channel 13-24
- Lx3 channel 25-36
- Lx4 channels 37-48
- Stage left patch odd number duplicate
- Stage left patch channels 49-54
- FOH channels 55-96

Permanent FOH LX Rig

6x Stand T-spots 1k

10x Strand Cantata 1.2k

8X Strand Harmony 1.2k

6x Chauvet Ovation E-910FC 25°–50°

2x Strand 2k follow spots located above control room. (Additional Cost)

Stage Lighting Stock

16x Chauvet Ovation F915FC Fresnel's

14x Chauvet Colordash Par H7P

6x Chauvet E910FC Profile 25-50Deg.

8x Chauvet Tour 72x Battens

8x Chauvet R1 Moving Head Spot

2x Chauvet R1 Moving Head wash

1x Chauvet Strike Strobe

1x Unique 2.1Hazer

Please see appendix C for default lighting plan.

Video

The venue is equipped with 2 projectors, a 5000Lumen projector standard mounted on front of balcony edge, included in hire FOC.

A Barco Cinema 2K projector is situated in the HR side of the booth, mainly used for Cinema screens but can as required be used for screening and light show use. (Please discuss with TM if required)

Sound

Sound Position

The mixing position is located at (the rear of the auditorium) or from (the control room) in the upper circle. Both positions have duplicate patch bays that return to stage. Both patch bays have 32 channel sends spilt from stage left/right and 8 returns 4 from each side of stage. Each patch bay also has a left and right send to stage.

Mixing Desk

- 1x Yamaha LS9 32

Permanent Sound Rig

- 2x Sherman Balcony fills 10"
- 2x Sherman Balcony cover 15"
- 4x RCF HDL10 Active Array Stalls Cover
- 2x RCF 18" Active Subs Stalls
- 2x OHM Subs Stalls

- 4x Sherman passive stage monitor
- 4x Yamaha passive stage monitor
- 1x PV Passive drum monitor
- 4 Channel Amp for stage wedges
- 2x 15" Side Fills
- 4x Front Fills (As Required)

- 12x Sennheiser EW100 Series radio receivers (Additional Cost)
- 12x Sennheiser EW100 Bodypack radio Transmitters (Additional Cost)
- 3x Sennheiser EW100 Handheld Transmitters (Additional Cost)
- Total of 12 channels of wireless mics made up of a combination of the above, please note for radio mic requirements above 12 channels the hirer will need to hire in a completely separate wireless system.

- 4x SM58
- 2x SM57
- 1x sure PG drum microphone set
- 3x AKG condenser microphones
- 2x Audio Technica condenser microphones
- 2x Shure Beta 58 microphones
- 2x Shure e606 microphones

Stage Door Suite Technical Spec

Brief

The Stage Door Suite is a conference style room located under the main auditorium. It has a (maximum 100 capacity) and is used for small scale events. Access is (via the main car park or box office).

Lighting

6x 500w Fresnel's

1x 12channel dimmer

4x LED Pars (on Request subject to availability.)

There are two front lighting bars both with 15a sockets, 13a and a DMX.

Sound

2 x Full Range Speakers

1x Small Mixing Desk with built in reverb.

Video

1x Projector and Screen with VGA and HDMI inputs.

Dimensions

Stage width 8.924m

Stage Depth 3.337m

Height to ceiling (Stage) 2.323m

Height to beam (Stage) 2.043m

Room width 13.744m

Room Depth 11.451m

Height to ceiling (Main Floor) 2.685m

Height to beam (Main Floor) 2.352m

How to Find The Grand Pavilion

The Grand Pavilion is located on the seafront of Porthcawl. All approaches have brown and white leisure amenity signposting, making it easier to find. Other landmarks next to the Grand Pavilion are One Stop convenient store and the Seabank Hotel.

Arriving by Car

Leave the M4 at Junction 34 and follow signs leading to Porthcawl.

Arriving by Bus

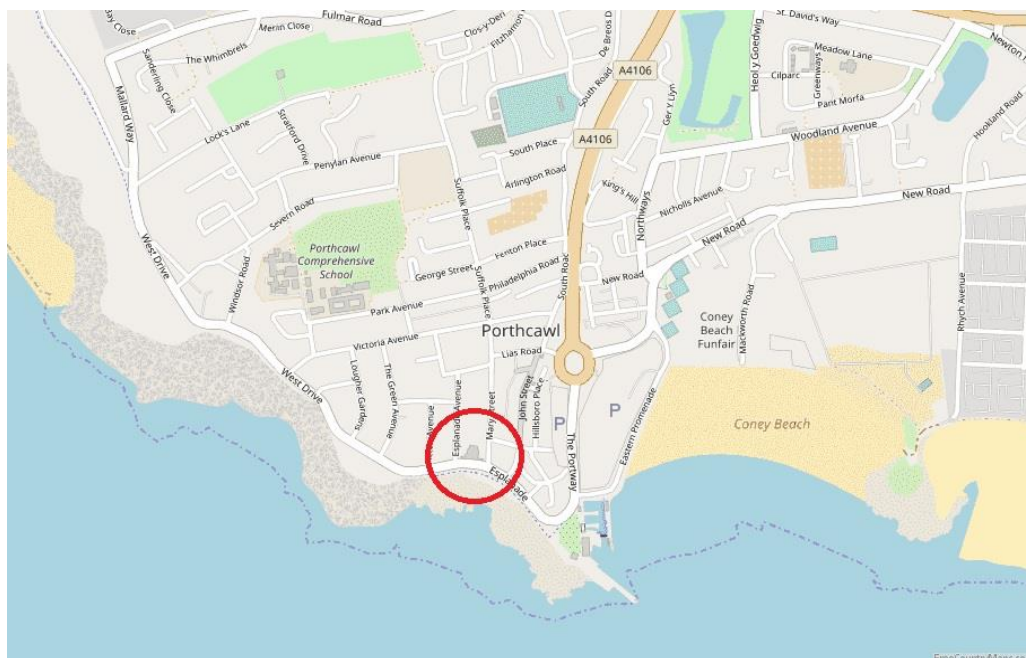
The main bus drop off is just a 5 minute walk from the sea front. First cymru and Stagecoach services can be contacted through Travel line Cymru on: **0800 464 0000**

Arriving by train

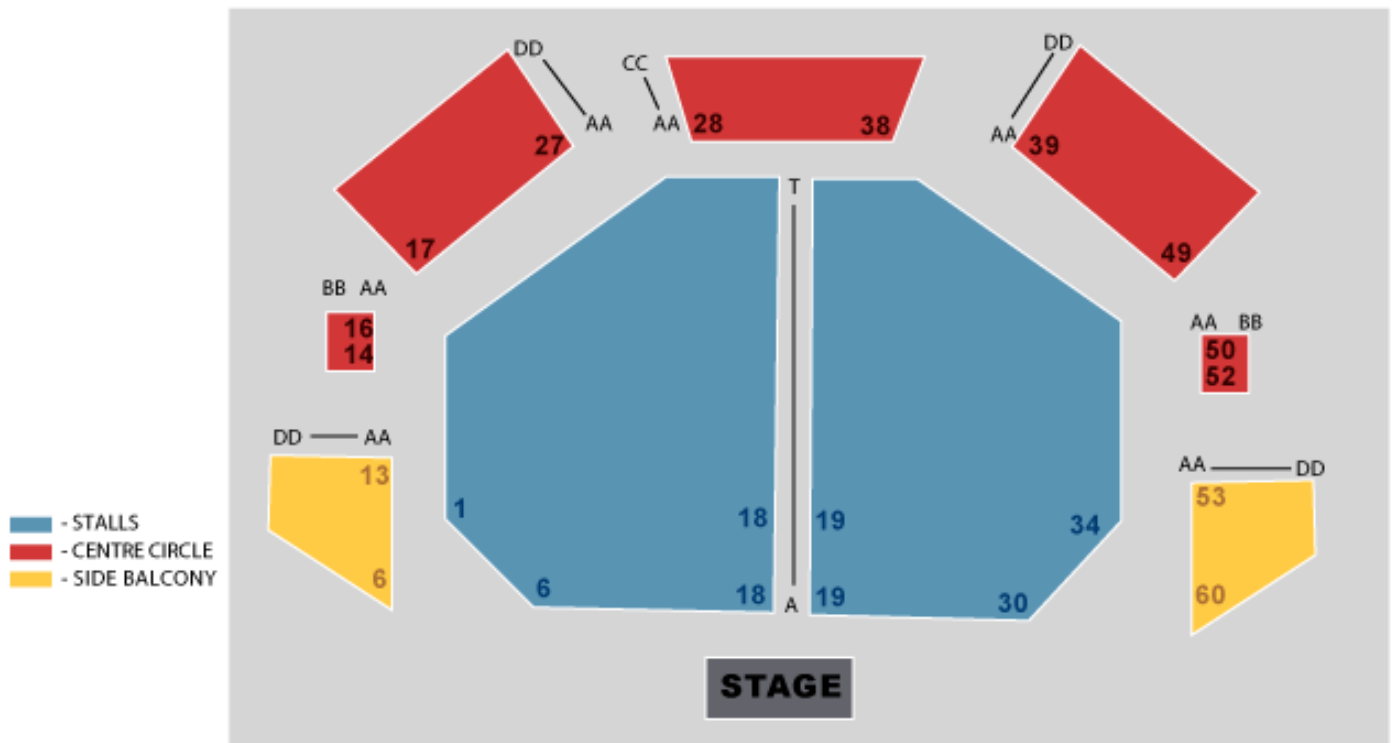
The nearest train stations are located in Pyle or Bridgend. Regular services run from Cardiff and London.

Parking

The Grand Pavilion has its own car park adjacent to the building. (This is a free car park with no restrictions).



Appendix A (Seating Plan)



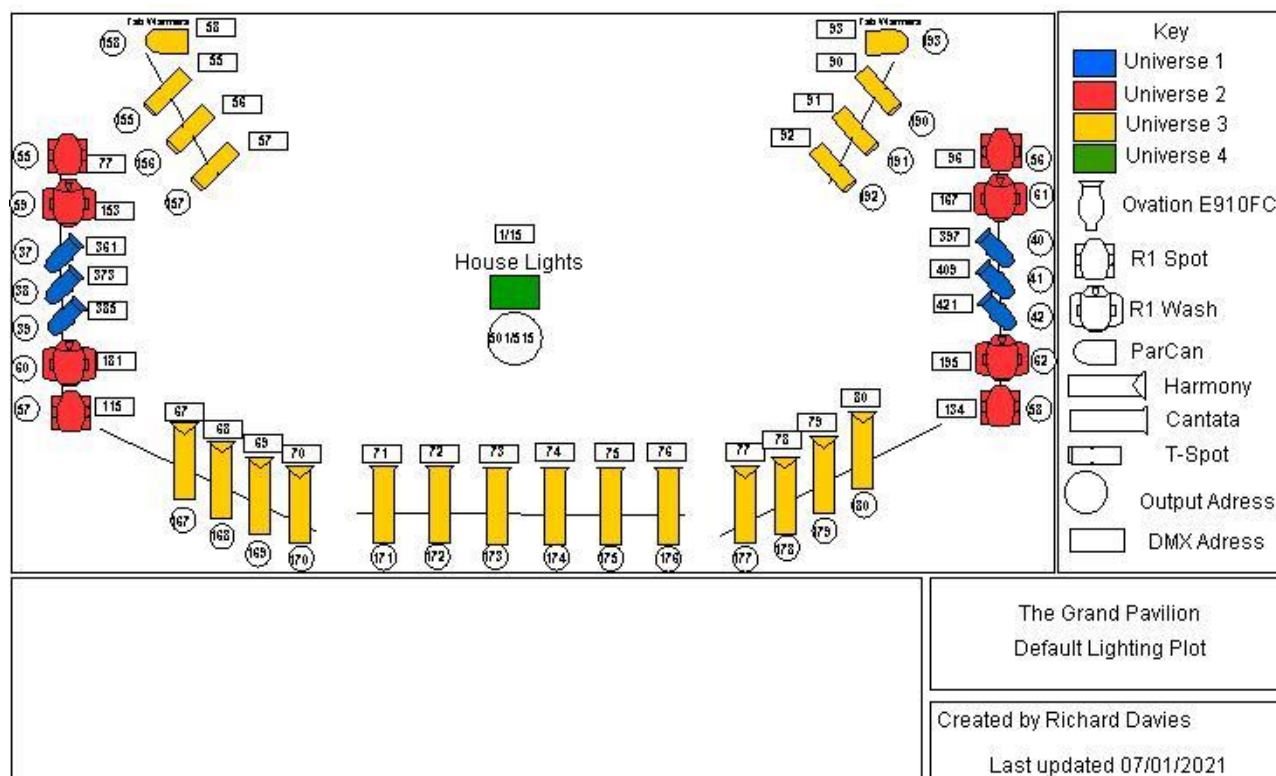
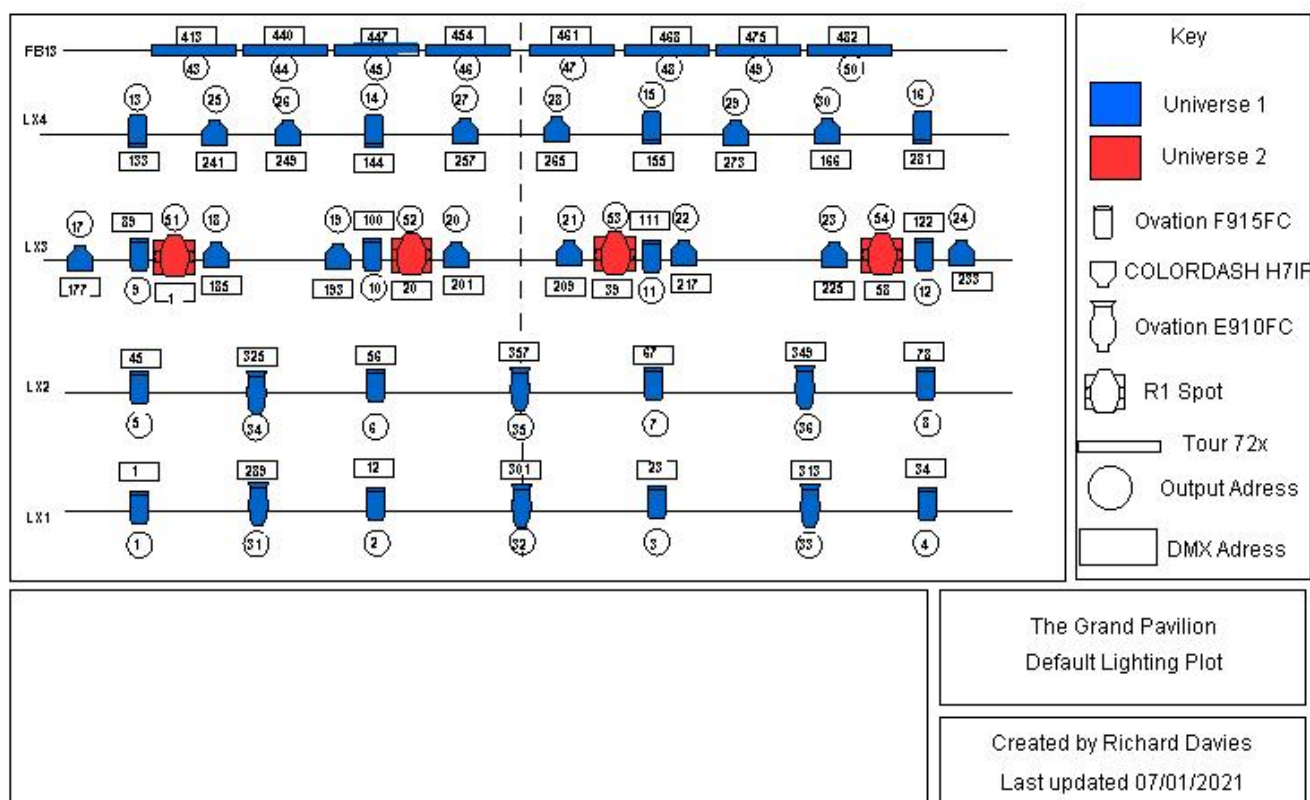
© 2014 Ticketmaster. All rights reserved

ticketmaster

Appendix B (Flying Gird Plan)

Hanging Plot							
Bar#	SWL (KG)	Distance from setting line		House Bar Use	Weight House	Production Bar Use	Weight Prod
Front of thrust stage		+1.2m	+4ft				
Proscenium Rail							
Front of Stage	Setting Line						
Safety Curtain		0.10m					
Tabs		0.40m					
Winch Set 1	200kg	0.70m		LX1			
	Cinema Screen						
RS1	70kg	1.30m					
RS2	70kg	1.45m					
RS3	70kg	1.70m					
RS4	70kg	1.90m					
Winch Set 2	250kg	2.20m		Storage			
Winch Set 3	200kg	2.30m		LX2			
RS5	70kg	2.70m					
RS6	70kg	3.00m					
RS7	70kg	3.10m					
	Pillars						
RS8	70kg	3.70m					
Winch Set 4	200kg	3.90m		LX3			
RS10	70kg	4.60m					
RS11	70kg	4.90m					
RS12	70kg	5.30m					
Winch Set 5	200kg	5.40m		LX4			
RS13	70kg	5.90m					
RS14	70kg	6.30m					
RS15	70kg	6.60m					
RS16	70kg	6.80m					
RS17	70kg	7.00m					

Appendix C (Default Lighting Plan)



Appendix D (Main Hall)



Appendix E (Stage Door Images)

