



MEAMORA

Success Plan

August 2025
(Revolution) V2.1

Titles and Acronyms

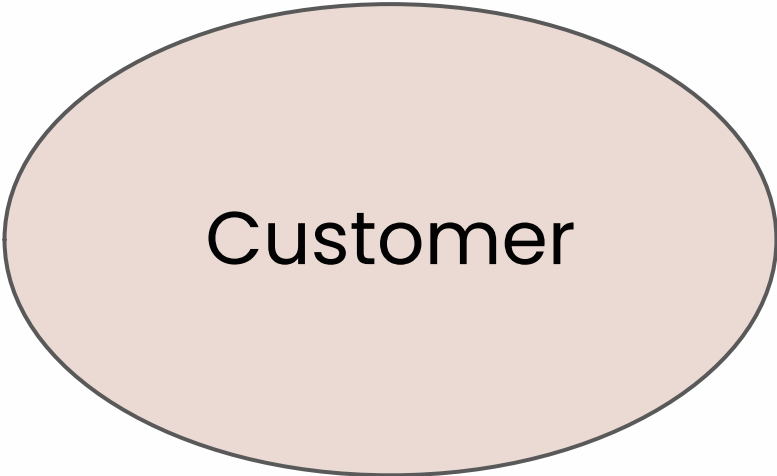
Customer - C	C
Host - H	H
Stylist - S	S
Lead Stylist -S1	S1
Senior Stylist S-2	S2

Leadership Titles

Star Stylist Leader - SSL	SSL
Exec Stylist Leader - ESL	ESL
Senior Executive Leader - SEL	SEL
Star Executive Leader - *EL	*EL
Senior Star Executive Leader - S*EL	S*EL

	STYLIST	LEAD STYLIST	SENIOR STYLIST	STAR STYLIST	EXECUTIVE	SENIOR EXECUTIVE	STAR EXECUTIVE	SENIOR STAR EXECUTIVE
PERSONAL SALES								
PERSONAL SALES (PS)	0-299.99	300	1,500	3,500				
DISCOUNT PERCENTAGE	20%	25%	30%	35%				
MENTOR BONUS								
PERSONAL SALES REQUIRED		300	300	300	300	300	300	300
CENTRAL GROUP SALES (GS)			1,500	3,500	3,500	3,500	3,500	3,500
PS DISCOUNT		25%	30%	35%	35%	35%	35%	35%
STYLISTS		5%	10%	15%	15%	15%	15%	15%
LEAD STYLISTS			5%	10%	10%	10%	10%	10%
SENIOR STYLISTS				5%	5%	5%	5%	5%
LEADER STAR COUNT					1	3	5	7
GENERATION BONUS								
GENERATION BONUS L1				4%	4%	4%	4%	4%
GENERATION BONUS L2					4%	4%	4%	4%
GENERATION BONUS L3						2%	2%	2%
GENERATION BONUS L4							2%	2%
DEVELOPMENT BONUSES								
RANK ADVANCEMENT BONUS			£50 - 60€ MATCHED FOR ENROLLER	£100 -120€ MATCHED FOR ENROLLER	£250 - 300€	£500- 600€	£1000 -1,200€	£3000-3,600€
CONSISTENCY BONUS					£100- 120€	£250-300€	£750-900€	£1000 - 1,200€

Customer

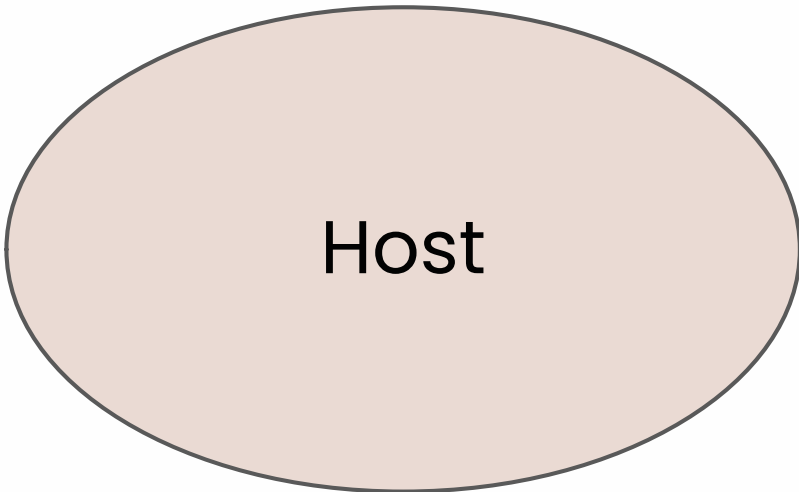


Requirements

- Can order online from their Stylist’s Shop, has an account in Shopify



Host

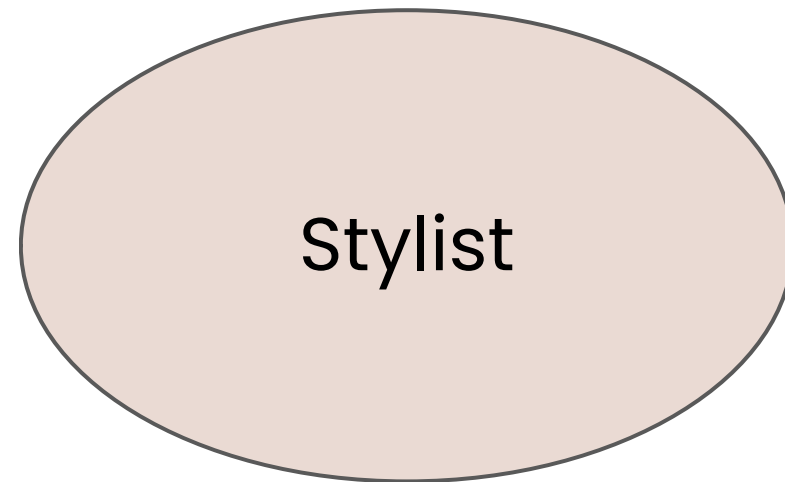


Requirements

- Same flexibility with their upline as for Customers
- Can order online from their Stylists Shop, has an account in Shopify

Host Rewards are described in Definitions

Stylist



Requirements

Join as a Stylist and purchase a starter kit

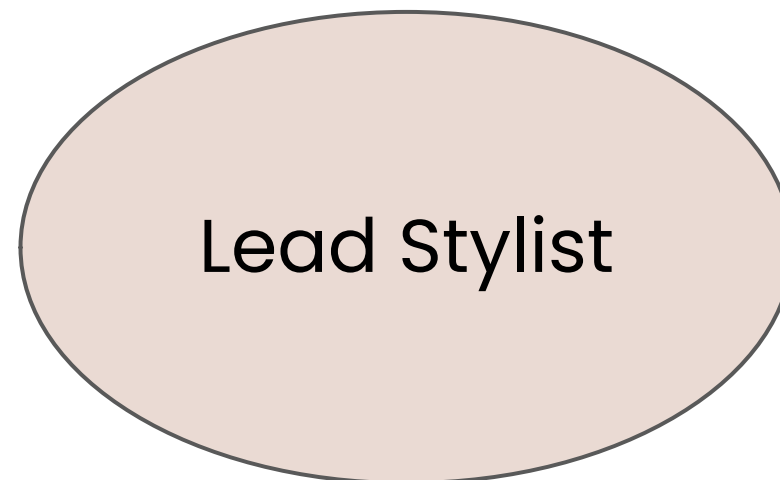
Monthly Qualification

No monthly qualification

What can you earn?

- 20% Retail Profit on all PS, paid weekly

Lead Stylist



Requirements

Join as a Stylist and purchase a starter kit

Personal Volume(PS) 300

Monthly Qualification

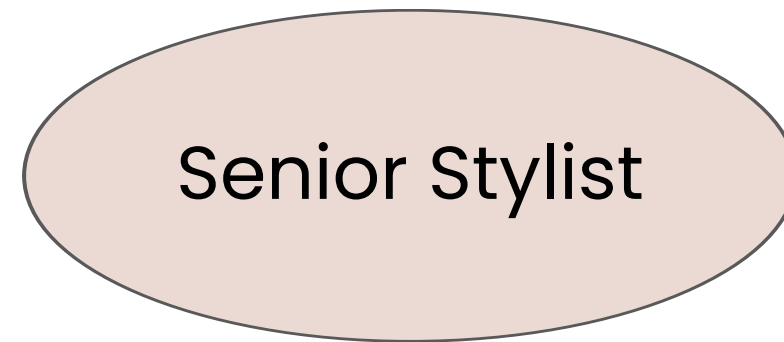
Personal Volume(PS) 300

What can you earn?

- 25% Retail Profit on all PS, paid weekly
- Mentor Bonus – 5% on all Front Line Stylists, paid weekly

MEAM♡RA

Senior Stylist



Promotion Requirements

Personal Volume(PS) 300
Group Volume(GS) 1500

Monthly Qualification

Personal Volume(PS) 300
Group Volume(GS) 1500

What can you earn?

- 30% Retail Profit on all PS, paid weekly
- Mentor Bonus
 - 10% on all Front Line Stylists, paid weekly
 - 5% on all Front Line Lead Stylists, paid weekly
- Rank Advancement Bonus £50/ 60€ in the month that you achieve it, plus £50 paid to upline Star (Mentor) or higher rank

Star Stylist Leader

Star Stylist Leader

Promotion Requirements

- PS 300
- GS 3500

Monthly Qualification

- PS 300
- GS 3500

What can you earn?

- 35% Retail Profit on all PS, paid weekly
- Mentor Bonus
 - 15% on all Front Line Stylists, paid weekly
 - 10% on all Front Line Lead Stylists, paid weekly
 - 5% on all Front Line Senior Stylists, paid weekly
- Leadership Bonus
 - 4% on your 1st Generation (your own Group)
- Rank Advancement Bonus £100/ 120€ in the month that you achieve it, plus £100 paid to the upline Star (Mentor) or higher rank

MEAM♡RA

Executive Leader

Executive
Leader

Star Stylist
Leader

Promotion Requirements

- PS 300
- GS 3500
- 1 Qualified Leader leg

Monthly Qualification

- PS 300
- GS 3500
- Qualified Leader leg
- Grace Period applies

What can you earn?

- 35% Retail Profit on all PS, paid weekly
- Mentor Bonus
 - 15% on all Front Line Stylists, paid weekly
 - 10% on all Front Line Lead Stylists, paid weekly
 - 5% on all Front Line Senior Stylists, paid weekly
- Leadership Bonus
 - 4% on your 1st Generation (your own Group)
 - 4% on your 2nd Generation breakaway Star Stylist groups
- Rank Advancement Bonus £250/ 300€ paid in the month that the promotion is first achieved
- Consistency Bonus £100/120€ (Paid on a rolling 3 month period up to 4 times a year)

Senior Executive Leader

Senior Executive
Leader

Star Stylist
Leader

Star Stylist
Leader

Star Stylist
Leader

Promotion Requirements

- PS 300
- GS 3500
- 3 Qualified Leader leg

Monthly Qualification

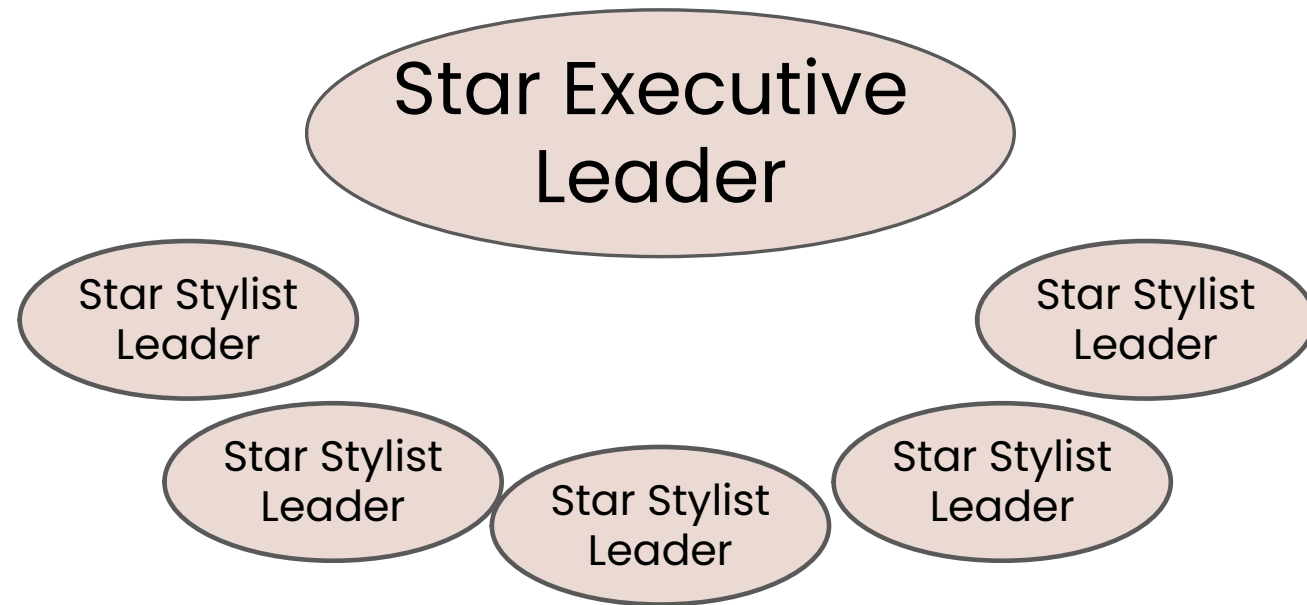
- PS 300
- GS 3500
- 3 Qualified Leader leg
- Grace Period applies

What can you earn?

- 35% Retail Profit on all PS, paid weekly
- Mentor Bonus
 - 15% on all Front Line Stylists, paid weekly
 - 10% on all Front Line Lead Stylists, paid weekly
 - 5% on all Front Line Senior Stylists, paid weekly
- Leadership Bonus
 - 4% on your 1st Generation (your own Group)
 - 4% on your 2nd Generation breakaway Star Stylist groups
 - 2% on your 3rd Generation breakaway Star Stylist groups
- Rank Advancement Bonus £500/ 600€ paid in the month that the promotion is first achieved
- Consistency Bonus £250/ 300€ (Paid on a rolling 3 month period up to 4 times a year)

MEAM♡RA

Star Executive Leader



Promotion Requirements

- PS 300
- GS 3500
- 5 Qualified Leader leg

Monthly Qualification

- PS 300
- GS 3500
- 5 Qualified Leader leg
- Grace Period applies

What can you earn?

- 35% Retail Profit on all PS, paid weekly

Mentor Bonus

15% on all Front Line Stylists, paid weekly

10% on all Front Line Lead Stylists, paid weekly

5% on all Front Line Senior Stylists, paid weekly

Leadership Bonus

4% on your 1st Generation (your own Group)

4% on your 2nd Generation breakaway Star Stylist groups

2% on your 3rd Generation breakaway Star Stylist groups

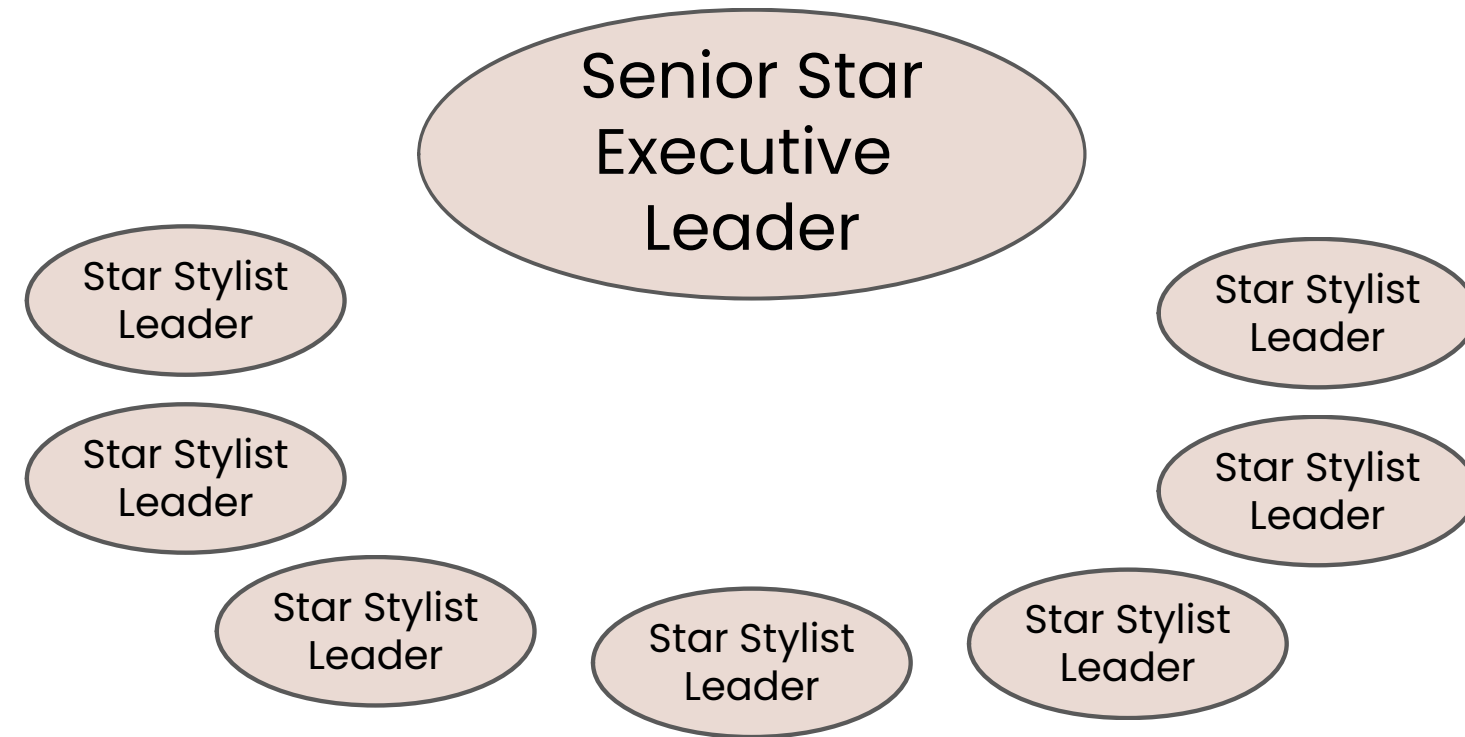
2% on your 4th Generation breakaway Star Stylist groups

Rank Advancement Bonus £1000/ 1200€ paid in the month that the promotion is first achieved

Consistency Bonus £750/ 900€ (Paid on a rolling 3 month period up to 4 times a year)

MEAMORA

Senior Star Executive Leader



MEAM♡RA

Promotion Requirements

- PS 300
- GS 3500
- 7 Qualified Leader leg

Monthly Qualification

- PS 300
- GS 3500
- 7 Qualified Leader leg
- Grace Period applies

What can you earn?

- 35% Retail Profit on all PS, paid weekly
- Mentor Bonus
 - 15% on all Front Line Stylists, paid weekly
 - 10% on all Front Line Lead Stylists, paid weekly
 - 5% on all Front Line Senior Stylists, paid weekly
- Leadership Bonus
 - 4% on your 1st Generation (your own Group)
 - 4% on your 2nd Generation breakaway Star Stylist groups
 - 2% on your 3rd Generation breakaway Star Stylist groups
 - 2% on your 4th Generation breakaway Star Stylist groups
- Rank Advancement Bonus £3000/ 3600€ paid in the month that the promotion is first achieved
- Consistency Bonus £1000/1200€ (Paid on a rolling 3 month period up to 4 times a year)

Key Definitions

Personal Volume (PS)

Every item in the inventory has a PS value. All qualifications for commissions and bonuses are calculated from the PS value.

Group Value (GS)

The total personal volume plus the personal volume of all Stylists in your downline down to but not including the next Star Stylist or above in your downline.

Organisation Volume (OV)

The total of PS of all Stylists in your entire organisation.

Retail Profit from Stylist Own Orders

When a Stylist places an order in Shopify, once checkout is complete and payment is made, the Stylist will receive the percentage value of the sale equivalent to their Stylist discount added to their account in the Plum Tree System. Paid weekly.

Retail Profit from Customer Orders

When a customer places an order in Shopify, once checkout is complete and payment is made, the upline Stylist will receive the percentage value of the sale, equivalent to their Stylist discount added to their account in the Plum Tree System. Sales from Customers or Virtual Parties are included in Stylist Commission. Paid weekly.

Mentor Bonus

Mentor Bonus is paid on a differential basis on the sales of all Stylists in your group. Example: a Star Stylist buys at a discount of 35%, they have a frontline Lead Stylist who buys at a 25% discount — the Star Stylist is due 10%. Mentor Bonus is paid from the sales of their frontline Lead Stylist's group. If the Star Stylist has a frontline Senior Stylist then they are due 5% Mentor Bonus from any sales in the Senior Stylist's group. Paid weekly.

Generation Leader Bonus

Generation Leadership Bonus is paid down generations of Star Stylist and above groups. Paid monthly.

Key Definitions

Generation

A generation starts with the first Qualified Star Stylist or above in a leg and concludes just before the next one begins. The second generation is marked by the next Qualified Star Stylist within that same leg.

Compression

For those at the Star Stylist level and above, compression guarantees a complete commission payout. Only the volume utilised for payment is subject to compression, while qualification volume remains unaffected.

Example;

Executive Lucy did not achieve her 3500 GS this month. As a result, her Star, Susie, was compensated as a senior stylist because they did not meet the 3500 requirement. Since Susie's volume does not roll up to Lucy, she cannot utilise it for Star qualification.

Grace Period

In the month following the first time promotion of a new Star Stylist, the upline leader's GS requirement is reduced to 1750 GS. This benefit is granted only once for each newly promoted Star and does not apply to repromotions.

Qualified Leader Leg

Each Stylist in your first line, personally recruited by you, represents a distinct leg. A Leader Leg refers to any leg that includes a Star Stylist Leader (or higher) downline – whether in your first line or not – who has qualified for payment during the month.

Paid As Title

A Leader is considered 'Paid As' their title as long as they meet the volume and structural requirements associated with that title. If a Leader or higher does not fulfill the qualifications to be paid as their title, they will instead be "paid as" the title for which they do meet the criteria. For example, if an Executive Stylist fails to qualify for the Executive title but meets the criteria for Star Stylist, they will be "paid as" a Star Stylist for that month.

Level

A Level is the line of sponsorship in the genealogy. You are Level 0. Your personally sponsored Stylists are Level 1 to you; their personally sponsored Stylists are Level 1 to them and Level 2 to you and so on.

Key Definitions

Host rewards

These are paid out by MeAmora to the Host of a Glow&Go, providing the sales have reached the start-up criteria of £150 €. At this level £30/ € reward points are earned. At £300/ €, 45.00/ € of rewards are earned and at £450/ € of sales £55/ € of rewards points are earned

Returns and Commission Clawbacks

If a return is made during the same Commission period as the order was placed, i.e. the current month. Then the PS and GS will be deducted from the Stylist's PS, and the upline GS which will have a negative effect on qualifications in the current month

If a return is made after the Commission Period has been closed then the process will take place the proceeding month