



A SUPERLATIVE
RESORT EXPERIENCE
IN VILAMOURA



TIVOLI
MARINA VILAMOURA
ALGARVE RESORT

tivolihotels.com



W E L C O M E T O T I V O L I M A R I N A V I L A M O U R A

Sophisticated and savvy, Tivoli Marina Vilamoura sets the tone for contemporary coastal holidays in Vilamoura, a central part of the Algarve known for scenic beauty and abundant golf greens. Located next to the harbour, the resort is a gateway to oceanic adventures at Ria Formosa Natural Park, replete with picturesque fishing communities and diverse marine flora and fauna.

Extensive leisure facilities, family-friendly services and smartly appointed rooms ensure relaxing getaways for every type of traveller. Revel in the laidback chic of our beach club Purobeach, indoor and outdoor swimming pools or enjoy holistic pampering at Tivoli Spa.

Wining and dining is eclectic and indulgent, from juicy cuts at Pepper's Steakhouse to fresh pasta at Oregano, delicate afternoon delights at Glee Boutique Café or extraordinary cocktails at The Argo Cocktail Bar.

L O C A T I O N

Tivoli Marina Vilamoura Algarve Resort is situated next to Vilamoura Marina with direct access to the beach.

It is just a 25-minute drive from Faro International Airport.

GPS: N 37°04'25.80" W 08°07'12.91"

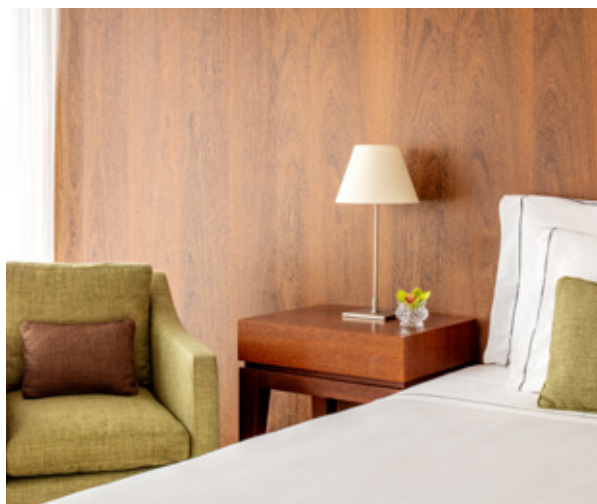
A C C O M M O D A T I O N

383 rooms with private balconies, ocean and marina views including:

1 Presidential Suite	22 Premium Purobeach Marina View
2 Junior Suite Purobeach	36 Premium Room Sea View
2 Family Junior	39 Premium Room Marina View
2 Vilamoura Suite Sea View	40 Deluxe Room Sea View
4 Junior Suite Sea View	50 Deluxe Room Marina View
10 Junior Suite	66 Superior Room Sea View
18 Family Room	72 Superior Room Marina View (including
19 Premium Purobeach Sea View	dedicated room for conditioned mobility)

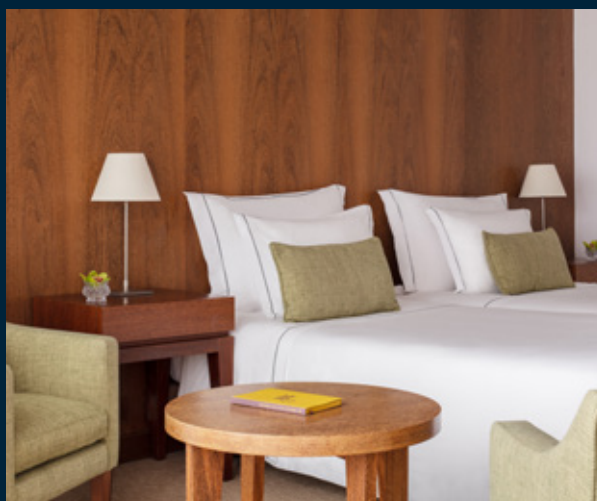
SUPERIOR ROOM MARINA VIEW

Rejoice with stunning Marina views and sophisticated comfort. Including around 31 sqm area, these rooms are located within floors 1 to 6 in the side wing of the hotel. They have double or twin beds and a fully equipped bathroom with shower or bathtub. Guests also have access to a safe and WIFI.



SUPERIOR ROOM SEA VIEW

Enjoy memorable holidays with breathtaking Atlantic views. With an area of around 31 sqm, these rooms are located from floors 1 to 6 in the side wing of the hotel. They have a double or twin beds and a fully equipped bathroom with shower or bathtub. Guests also have access to a safe and WIFI.



DELUXE ROOM MARINA VIEW

These rooms have a balcony with views of Vilamoura Marina. With an area of around 31 sqm, they are located from floors 1 to 6 in the central wing of the hotel. They have double or twin beds, two individual sofas and a fully equipped bathroom with shower or bathtub. Guests also have access to a free safe and free WIFI.



DELUXE ROOM SEA VIEW

These rooms have a balcony with sea view. With an area of around 31 sqm, they are located from floors 1 to 6 in the central wing of the hotel. They have a double or twin beds, two individual sofas and a fully equipped bathroom with shower or bathtub. Guests also have access to a free safe and free WIFI.



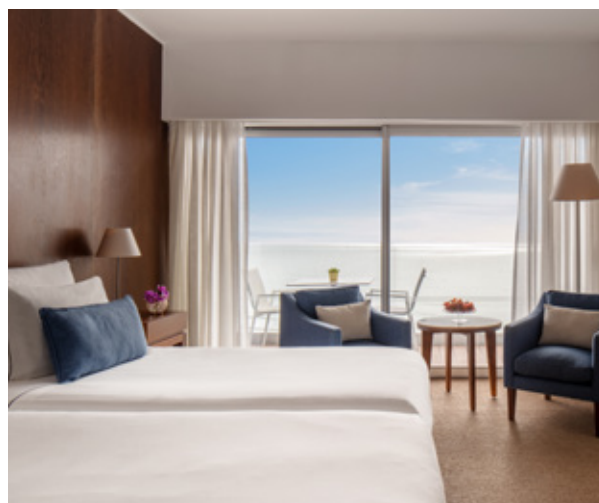
PREMIUM ROOM MARINA VIEW

These rooms include Nespresso coffee machine and soft drinks in the minibar (replaced daily), Internet, check-in and check-out and 10% off Tivoli Spa treatments. Located on floors 8 and 9 of the hotel, they present an area of around 31 sqm. These rooms are composed of double or twin beds, balconies with views of Vilamoura Marina and a fully equipped bathroom.



PREMIUM ROOM SEA VIEW

These rooms include Nespresso coffee machine and soft drinks in the minibar (replaced daily), Internet, priority check-in and check-out and Tivoli Spa benefits. Located on floors 8 and 9 of the hotel, they have an area of around 31 sqm. These rooms have a double or twin beds, balconies with sea views and a fully equipped bathroom.



FAMILY ROOM

These spacious rooms with an area of 49 sqm, possess a double bed and sofa-bed that accommodates 2 guests on individual bedding. With views of the sea or Vilamoura Marina, they are located on the 1st floor and have an exclusive deck with a lounge area - table, sofas and sunshade.



PREMIUM PUROBEACH MARINA VIEW

Soak up more sunrays and exclusive privileges with the new Premium Purobeach Marina View, featuring daily access (subject to reservation) to the beach club or Purobeach Poolside (Adults only) between April and October. Enjoy a sun lounger by the pool or on the sand all day long, with special privileges such as a parasol at Purobeach Vilamoura, flip-flops and a welcome drink. Watch sundown from the Purobeach dance floor or the privacy of your room's balcony with stunning views over the marina.



PREMIUM PUROBEACH SEA VIEW

Soak up more sunrays and exclusive privileges with the new Premium Purobeach with Sea View room, featuring daily access (subject to reservation) to the beach club or Purobeach Poolside (Adults only) between April and October. Enjoy a sun lounger by the pool or on the sand all day long, with special privileges such as a parasol at Purobeach Vilamoura, flip-flops and a welcome drink. Watch sundown from the Purobeach dance floor or the privacy of your room's balcony with stunning views over the sea.



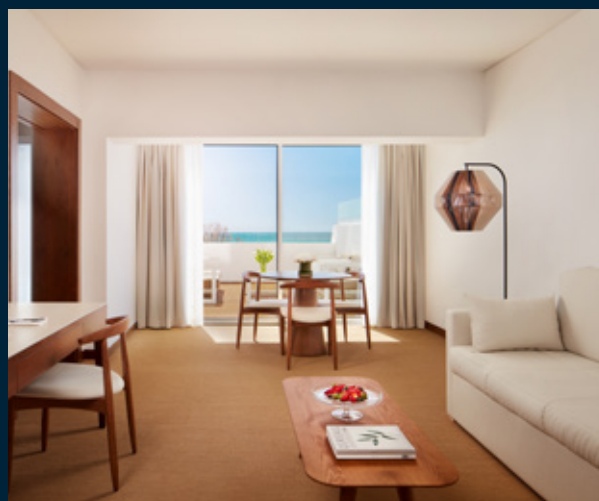
JUNIOR SUITE

These suites of around 46,5 sqm have a balcony with views of the sea and are located on floors 2 to 6. They have a double bed, separate living area and a fully equipped bathroom. Guests also have access to a safe and Nespresso coffee machine. Additionally, benefit from the exclusive offer of a "Tivoli Fusion Signature Massage" (50 minutes) with your Junior Suite booking.



FAMILY JUNIOR

The Family Junior, with an area of around 79,5 sqm, has a double bed and a sofa-bed. With views of the sea, is located on the 1st floor and have an exclusive deck with a lounge area. With a separate living area and a fully equipped bathroom, guests also have a free safe and a Nespresso coffee machine. Additionally, benefit from the exclusive offer of a "Tivoli Fusion Signature Massage" (50 minutes) with your Family Junior booking.



JUNIOR SUITE SEA VIEW

These suites provide exclusive services including Nespresso coffee and soft drinks in the minibar (replaced daily), Internet, priority check-in and check-out and Tivoli Spa benefits. Located on floors 8 and 9 of the hotel, with an area of around 46,5 sqm these rooms have a double bed and a separate living area plus balconies with sea views. Additionally, benefit from the exclusive offer of a "Tivoli Fusion Signature Massage" (50 minutes) with your Junior Suite with Sea View booking.



VILAMOURA SUITE SEA VIEW

Vilamoura Suite with Sea View boasts astonishing balcony views of gleaming Atlantic swells. Benefit from VIP treatment upon arrival including priority check-in and check-out and your choice of an excellent complimentary Tivoli experience: dinner for two at Pepper's Steakhouse with selected drinks included, a 90-minute couples Tivoli Spa treatment or sunbeds for two at Purobeach (between April and October).



JUNIOR SUITE PUROBEACH

Live it up with Tivoli luxury and daily access (subject to reservation) to the beach club or Purobeach Poolside (Adults only) with your stay at the Junior Suite Purobeach with stunning ocean views between April and October. Linger in the pool or on golden sands all day long, enjoying exclusive amenities such as a parasol at Purobeach Vilamoura, flip-flops and a welcome drink. Enjoy 10% off at Tivoli Spa to get even more joy out of coastal paradise. Additionally, benefit from the exclusive offer of a "Tivoli Fusion Signature Massage" (50 minutes) with your Junior Suite Purobeach with View booking.



PRESIDENTIAL SUITE

Seaside indulgence surpasses with the Presidential Suite and its balcony offering panoramic views of Vilamoura Marina. Take advantage of VIP treatment upon arrival and our upbeat take on resort prestige: priority check-in and check-out, a Dining Delight experience for two, a 50 minute couples treatment at Tivoli Spa or sunbeds for two at Purobeach (between April and October).



ROOM TYPES SUMMARY

ROOM TYPE	BED TYPE	AREA	MAXIMUM ROOM OCCUPANCY
Superior Room Marina View	Twin or Double Bed	31 m ²	3
Superior Room Sea View	Twin or Double Bed	31 m ²	3
Deluxe Room Marina View	Twin or Double Bed	31 m ²	3
Deluxe Room Sea View	Twin or Double Bed	31 m ²	3
Premium Room Marina View	Twin or Double Bed	31 m ²	3
Premium Room Sea View	Twin or Double Bed	31 m ²	3
Family Room	Double Bed	49 m ²	4
Premium Purobeach Marina View	Twin or Double Bed	31 m ²	3
Premium Purobeach Sea View	Twin or Double Bed	31 m ²	3
Junior Suite	Double Bed	46,5 m ²	3
Family Junior	Double Bed	79,5 m ²	5
Junior Suite Sea View	Double Bed	46,5 m ²	3
Vilamoura Suite Sea View	King Size Bed	62,5 m ²	2
Junior Suite Purobeach	King Size Bed	46,5 m ²	3
Presidential Suite	King Size Bed	99,5 m ²	2

ROOM FACILITIES

- Complimentary WiFi
- Pillow Menu
- LCD TV (minimum 49")
- Video on demand
- In-room safe
- Tivoli Bathrobes and slippers
- Bathtub or shower option
- Balcony or terrace with lounge furniture
- 24-hour in-room dining
- Nespresso coffee machine and tea facilities
- Mini Bar
- In-room working station and lounge area
- Iron and Ironing Board (on request)
- Turndown service
- Pet friendly policy

RESORT FACILITIES

- Direct access to Vilamoura Beach and Vilamoura Marina
- WiFi across the resort
- Two outdoor swimming pools, including children's pool
- Tivoli Spa with 11 treatment rooms, indoor swimming pool and wellness area
- Tivoli Shape gym and functional training room
- Purobeach Poolside and Beachfront
- Children's playground, indoor play area and baby pantry
- Babysitting services (on request)
- Games area – Mini golf, ping pong, chess, among others
- Concierge service and Golf Desk
- Business Centre services
- StayApp – Digital platform with resort info and booking service
- PressReader – Digital newspapers and magazines
- Library
- Hairdresser
- Valet Parking
- Parking access for bus and diverse vehicles
- Accessibility for conditioned mobility (to all facilities and dedicated equipment)



LOCAL SERVICES AND ATTRACTIONS

- Rent-a-car and private taxi service – in the resort
- Bike, scooter and Segway rental – in the resort
- Diversity of jogging and walking trails with outdoor workout equipment – walking distance
- Local shops – walking distance
- Vilamoura Casino – 5 minutes' walk
- Nautical activities (Yacht rental, boat trips, fishing experiences, among others) – 5 minutes' walk
- Motor Water Sports activities (Jet Ski, parasailing, water rides, among others) – 5 minutes' walk
- Water Sports and equipment rental (Surf, SUP, windsurf, among others) – 5-10 minutes' walk
- Vilamoura Medical Centre – 7 minutes' walk
- Pharmacy – 7 minutes' walk
- Bank – 7 minutes' walk
- Vilamoura Veterinary Clinic – 15 minutes' walk

- Vilamoura Tennis & Padel Academy – 8 minutes' drive
- Family Golf Park (outdoor Mini Golf) – 8 minutes' drive
- Golf courses – see Golf Desk section
- Horse Riding Centre – 15 minutes' drive
- Aquashow Water Park – 15 minutes' drive

SURROUNDING ATTRACTIONS

- Karting Almancil – 17 minutes' drive
- Mar Shopping Algarve – 25 minutes' drive
- Loulé's traditional Market – 25 minutes' drive
- Loulé's Heliport (private sky tours) – 25 minutes' drive
- Zoomarine Water Park – 35 minutes' drive
- Ria Formosa – 40 minutes' drive
- Benagil Caves – 45 minutes' drive
- Algarve International Circuit – 50 minutes' drive
- Lagos Zoo – 55 minutes' drive
- Algarvian vineyards – surrounding areas
- Culture and Nature itineraries – local and surrounding areas



RESTAURANTS & BARS

The stated opening hours are subject to alteration without prior notice and may be variable according to the season.

PEPPER'S STEAKHOUSE

Cut into deep satisfaction from the grill. Slice into a perfectly seared steak. Tuck away a few fresh oysters. Relish a broad range of flavourful wines, carefully presented by our dedicated sommelier. This restaurant overlooking the marina has everything for a fun night out, with carnivorous mains, fresh vegetables and sautéed seafood.

Opening hours: 19:00 – 22:30

Venue Capacity:

Pepper's Steakhouse Restaurant: 70 persons

Pepper's Steakhouse Terrace: 108 persons



CHILLI

Sit down at Chilli's for a meal defined by the variety of daily buffet spreads. Discover new Portuguese flavours or indulge in international comfort foods in a splendid airy indoor or outdoor atmosphere.

Breakfast: 07:30 – 10:30

Venue capacity:

Chilli I. 180pax. | Chilli II: 180 persons

Chilli Terrace: 120 persons



THE ARGO COCKTAIL BAR

Delight yourself with a refreshing Golden Fleece or dare to experience our signature Sailor's Death cocktail, and enjoy exciting live music performances at this sophisticated cocktail bar. An elegant setting with blissful views over the Vilamoura Marina.

Opening hours: 17:00 – 01:00

Venue Capacity: 100 pax (Interior) + 76 persons (Exterior)



GLEE BOUTIQUE CAFÉ

Indulge with elegant delicacies from cappuccinos and exquisite teas to macaroons and chocolate truffles, and relax for a moment in this delightful boutique café with a magnificent view over the Vilamoura beach.

Opening hours: 10:00 – 18:00

Venue Capacity: 32 persons



D'AZUR POOL BAR

Delicious sips and tastes underscore summer. Our pool bar (seasonal opening), is the perfect spot for a pick-me-up. Slip into the shade on a comfy sofa or barstool. Chess and backgammon boards are available at reception.

Opening hours: 10:30 – 19:00

Capacity: 57 persons



OREGANO

Sensational pasta, pizzas and more Mediterranean indulgence. This casual restaurant offers a mini-Roman holiday, with homemade Mediterranean cuisine made from the finest local produce.

Lunch: 12:00 – 18:00

Dinner: 19:00 – 22:30
(seasonal opening)

Venue Capacity:

Oregano Restaurant: 120 persons

Oregano Terrace: 140 persons



PUROBEACH POOLSIDE

Take a dip in the pool. Live it up with a relaxing massage. Order another round of Champagne and chill out surrounded by verdant greenery. Premium service and peaceful tranquility combined for the perfect summer party scenery. Drop-dead sunsets, sleek DJ beats and signature bites set the mood.

Opening hours: 10:00 – 19:00 (seasonal opening)

Venue Banqueting Capacity: 100 persons
Capacity for cocktail set-up: 280 persons



PUROBEACH BEACHFRONT

Purobeach's lounge beds are the ultimate base for experiencing Algarve luxury. Indulge in your rhythms and whims with a signature menu inspired by Melbourne, Miami and Marrakesh. With our Chefs, creative flourishes promise fusion cuisine to tease the senses, using local ingredients such as fresh seafood and fish. When the sun goes down, golden sands become the dance floor with excellent DJs, alluring cocktails and rich bites to keep you moving.

Opening hours: 10:00 – 19:00
(seasonal opening)

Venue Capacity: 100 persons



TIVOLI SPA

Tivoli Spa Vilamoura offers elegant, refined and timeless spa experiences grounded in holistic healing. Time-honoured techniques are balanced with splendid touches, using natural raw Algarvian elements and products inspired by essences of sea and sand. Treatments never stray far from the traditional meaning of healing while capitalizing on personalized approaches, so that every guest transcends tension and emerges invigorated according to their needs.

Opening hours: 11:00 – 20:00



TIVOLI SHAPE

Located in the heart of the Algarve, with natural day light and close to the hotel gardens, stands Tivoli Shape. Upon entering you will discover exclusive facilities, LifeFitness equipments, personal training and an exclusive private Functional Training Room (subject to reservation), with complete access to the entire Tivoli Spa wellness areas: indoor swimming pool, vitality pool, sauna and steam room.

Opening hours: 08:00 – 20:00



PLUMA JUNIOR CLUB

Our family-friendly resort offers a range of facilities and services catered towards keeping small guests entertained. Children can play freely in their very own swimming pool or an outdoor playground and indoor play area, with organized activities offered during Carnival, Easter and Christmas holidays for ages between 4 and 12. At our baby pantry, parents have access to a microwave and fridge as well as complimentary soups, milk and water set out daily. Special menus at Chilli, Oregano and Pepper's offer simple dishes from spaghetti to chicken nuggets that big kids are sure to love. Tivoli Marina Vilamoura also offers babysitting services upon request so that parents can seek quiet time during a spa treatment, gym session or romantic dinner on the resort.



GOLF

The Algarve is renowned as a golfing mecca with 31 high-end courses across the region. Our resort is perfectly positioned in central Vilamoura among all of them, with nine championship courses within a 20-kilometre radius of the property. Our Hospitality and Concierge team offers premium service to all our golf enthusiasts, from guaranteed starting times at selected courses to clinics and lessons with a professional coach.

Nearby Golf Courses:

Laguna, Millennium and Victoria (0 km)
Old Course and Pinhal (1 km)
Vila Sol (6 km), Pine Cliffs (10 km)
Vale de Lobo Royal and Ocean (13 km)
Pinheiros Altos, Quinta do Lago South and North (19 km)
San Lorenzo (20 km) and Salgados (25 km)





TIVOLI WEDDINGS

With its privileged location between the emblematic Vilamoura Marina and the Vilamoura beach, Tivoli Marina Vilamoura is a landmark of luxury tourism in the Algarve and the perfect hotel to host your dream wedding.

You can choose a ceremony with your feet on the sand, or in the lush gardens of the hotel and either option will provide the most exotic scenery to such memorable moment.

SEA VIEW VENUES

- Purobeach Beachfront

GARDEN VENUES

- Lakeside

RESORT VENUES

- Ocean Lounge
- Oregano



MEETINGS & EVENTS

Whether you're visiting us for a major corporate or a low-key meeting, our dedicated, highly experienced team is at your service. Our resort is equipped with a complete list of state-of-the-art facilities. Flexible venues boast beautiful views over the gardens, marina and sea. The new-build Algarve Congress Centre is the premier destination for conferences, meetings and functions in southern Portugal. Modern spaces offer versatile layouts, catering to groups of all sizes. The perfect location, in central Vilamoura, promises plentiful opportunities for adventure and relaxation in the Algarve.

For further information about Algarve Congress Centre, please check:

centrocongressosalgarve.com

SUPPORT INFRASTRUCTURES

- Adaptable meeting rooms
- Reception facilities for groups
- Direct access for coaches
- Exclusive area for secretarial services
- Multiple venues for events
- Hotel gardens, multiple restaurants and bars
- Access through Hotel or Marina

SERVICES AVAILABLE

- WiFi in public areas and meeting rooms
- Wi-Fi Internet access (up to 2GB upon request and quotation)
- Digital signposting to guide delegates

ALGARVE CONGRESS CENTRE

FLOOR 1 - FÉNIX

ROOM	W X L X H	AREA(m ²)	THEATRE	SCHOOL	CABARET (8 pax)	BANQUET	COCKTAIL COFFEE BREAK
Fénix	71.73 x 31.26 x 10	2215	2500	1188	1120	1400	3000
I	28.81 x 8.34 x 10	240	240	130	112	140	-
II	28.81 x 10.85 x 10	312	272	130	112	140	-
III	28.81 x 12.06 x 10	347	272	150	112	140	-
IV	28.81 x 12.06 x 10	347	272	150	112	140	-
V	14.81 x 19.09 x 10	282	250	126	120	150	-
VI	13.90 x 19.09 x 10	266	250	126	120	150	-
I + II + III	28.81 x 31.26 x 10	900	808	420	336	420	-
I + II + III + VII	42.71 x 31.26 x 10	1335	1414	648	552	690	-
IV + V + VI	28.81 x 31.26 x 10	900	808	420	336	420	-
IV + V + VI + VII	42.71 x 31.26 x 10	1335	1414	648	552	690	-
Floor I – Foyer	8.71 x 58.04 x 7.50	583	-	-	-	-	500

FLOOR O - PÉGASO AND NEPTUNO

ROOM	W X L X H	AREA(m²)	THEATRE	SCHOOL	CABARET (8 pax)	BANQUET	COCKTAIL COFFEE BREAK
Pégaso	21.72 x 19.50 x 4	398	320	168	168	208	400
I	8.64 x 5.38 x 4	46	36	30	32	50	-
II	8.64 x 4.24 x 4	37	36	27	24	30	-
III	8.64 x 4.29 x 4	37	36	27	24	30	-
IV	10.81 x 6.31 x 4	55	40	27	32	50	-
V	10.81 x 6.31 x 4	55	40	27	32	50	-
VI	8.64 x 4.29 x 4	37	36	27	24	30	-
VII	8.64 x 4.24 x 4	37	36	27	24	30	-
VIII	8.64 x 5.38 x 4	46	36	30	32	50	-
Neptuno	21.72 x 19.50 x 4	398	320	168	168	208	400
I	8.64 x 5.38 x 4	46	36	30	32	50	-
II	8.64 x 4.24 x 4	37	36	27	24	30	-
III	8.64 x 4.29 x 4	37	36	27	24	30	-
IV	10.81 x 6.31 x 4	55	40	27	32	50	-
V	10.81 x 6.31 x 4	55	40	27	32	50	-
VI	8.64 x 4.29 x 4	37	36	27	24	30	-
VII	8.64 x 4.24 x 4	37	36	27	24	30	-
VIII	8.64 x 5.38 x 4	46	36	30	32	50	-
Floor 0 - Foyer	17.29 x 50.90 x 4.8	742	-	-	-	-	700

TERRACES AND ROOFTOP

ROOM	ÁREA(m²)	COCKTAIL / COFFEE BREAK
Rooftop	2656	3500
Marina View Terrace - Floor 1	140	100
Ocean View Terrace - Floor 1	202	180
Waterfront Terrace - Floor 1	412	380

HOTEL MEETING ROOMS AND VENUES

ROOM	L X W X H	ÁREA(m²)	THEATRE	SCHOOL	CABARET	U SHAPE	BANQUET	COCKTAIL
Vega	7 x 20.5 x 3.2	143,5	170	110	-	50	-	-
Gemini	15 x 26 x 3.7	390	480	280	180	120	300	-
Gemini I	15 x 8.3 x 3.7	124,5	170	100	50	40	80	-
Gemini I & II	15 x 17.7 x 3.7	265,5	320	180	90	-	200	-
Gemini II	15 x 9.4 x 3.7	141	180	100	50	50	104	-
Gemini III	15 x 8.3 x 3.7	124,5	170	100	50	40	80	-
Lakeside	-	-	-	-	-	-	1050	3000
Ocean Lounge	-	-	-	-	-	-	180	200



R E S O R T P O L I C I E S

CHECK-IN AND EARLY CHECK-IN

Check-in is from 15:00 onwards. Early check-in is available, subject to a surcharge: before 10:00 for the previous night's full room rate or before 14:00 for a surcharge equivalent to 50% of the previous night's room rate.

CHECK-OUT AND LATE CHECK-OUT

Check-out is until 12:00. Late check-out is available subject to a surcharge: For check-out between 12:00 and 16:00, the equivalent of 50% of the following night's room rate will be charged. For check-out after 16:00, that day's full room rate will be charged.

CREDIT CARDS

Tivoli Marina Vilamoura accepts the following credit cards: American Express, Visa, MasterCard and Diners.

CANCELLATION POLICY

For cancellations and no-shows, the reservation will be subject to a debit in accordance with the information provided at the point of reservation. General policies do not apply to group reservations. For reservations of 10 or more rooms, private policies apply.



TIVOLI
MARINA VILAMOURA
ALGARVE RESORT

Apartado 65 Marina Vilamoura,
8125-901 Vilamoura, Portugal
T. +351 289 303 303
E. marinavilamoura@tivoli-hotels.com
tivilhotels.com

DISCOVERY 