



EVOTECH®
P E R F O R M A N C E

Installation Instructions

BMW S1000RR 2015 CRASH PROTECTION

Product Reference - 8176

Kit Contents

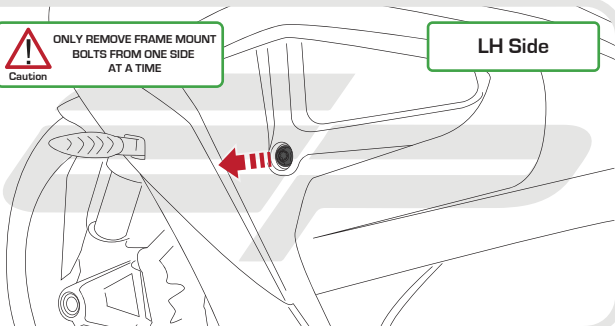
- Ⓐ 1 x RH Bobbin Spacer (Short)
- Ⓑ 1 x LH Bobbin Spacer (Long)
- Ⓒ 1 x M10 - 90 x 1.5 Bolt
- Ⓓ 1 x M10 - 110 x 1.5 Bolt
- Ⓔ 2 x Bobbin Heads
- Ⓕ 2 x M10 Washers

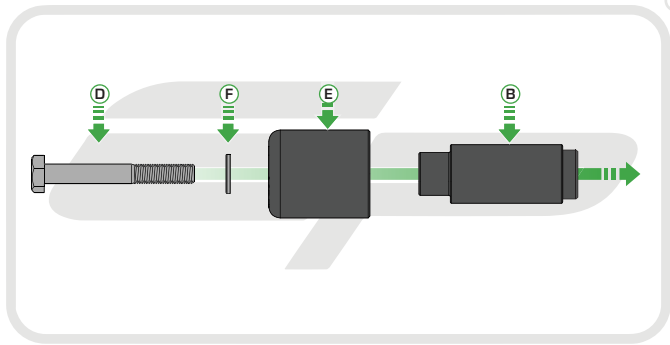


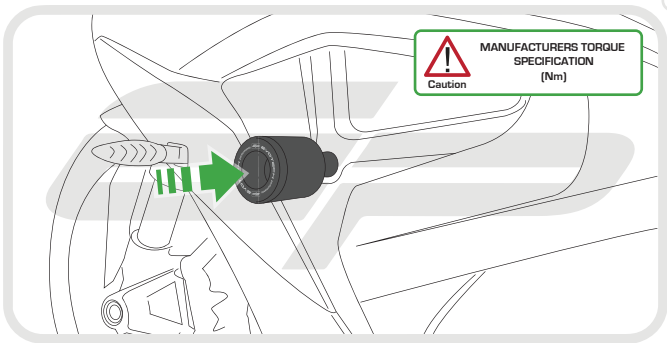
Caution

ONLY REMOVE FRAME MOUNT
BOLTS FROM ONE SIDE
AT A TIME

LH Side







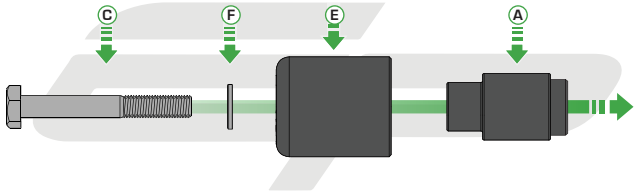


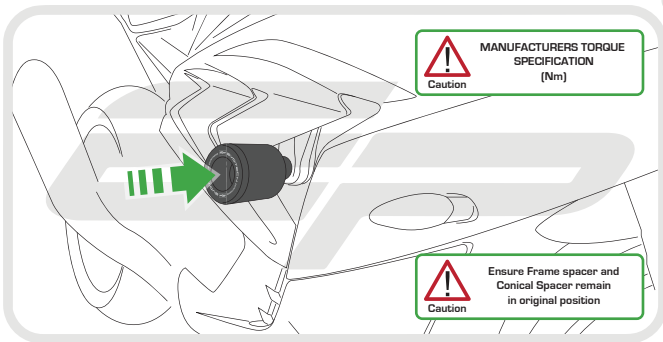
Caution

ONLY REMOVE FRAME MOUNT
BOLTS FROM ONE SIDE
AT A TIME

RH Side









ESSENTIAL CHECKS



It is recommended that periodic inspections are made to ensure that all bolts are tightened to the specified torque settings.

Should the bike be involved in an accident a thorough inspection should be made and any components that have taken an impact, no matter how small, be replaced



EVOTECH®
P E R F O R M A N C E

www.evotech-performance.com