

**MEDEQUIP4KIDS LIMITED**

**CHARITY REGISTRATION NUMBER 1102830  
COMPANY REGISTRATION NUMBER 4655610**

**FINANCIAL STATEMENTS FOR THE YEAR ENDED 31 MARCH 2013**

TUESDAY  
F



A15	*A2NXAHWQ*	#358
	24/12/2013	
	COMPANIES HOUSE	
A45	*A2N54UG9*	#102
	13/12/2013	
	COMPANIES HOUSE	

**MEDEQUIP4KIDS LIMITED**

**CHARITY REGISTRATION NUMBER 1102830  
COMPANY REGISTRATION NUMBER 4655610**

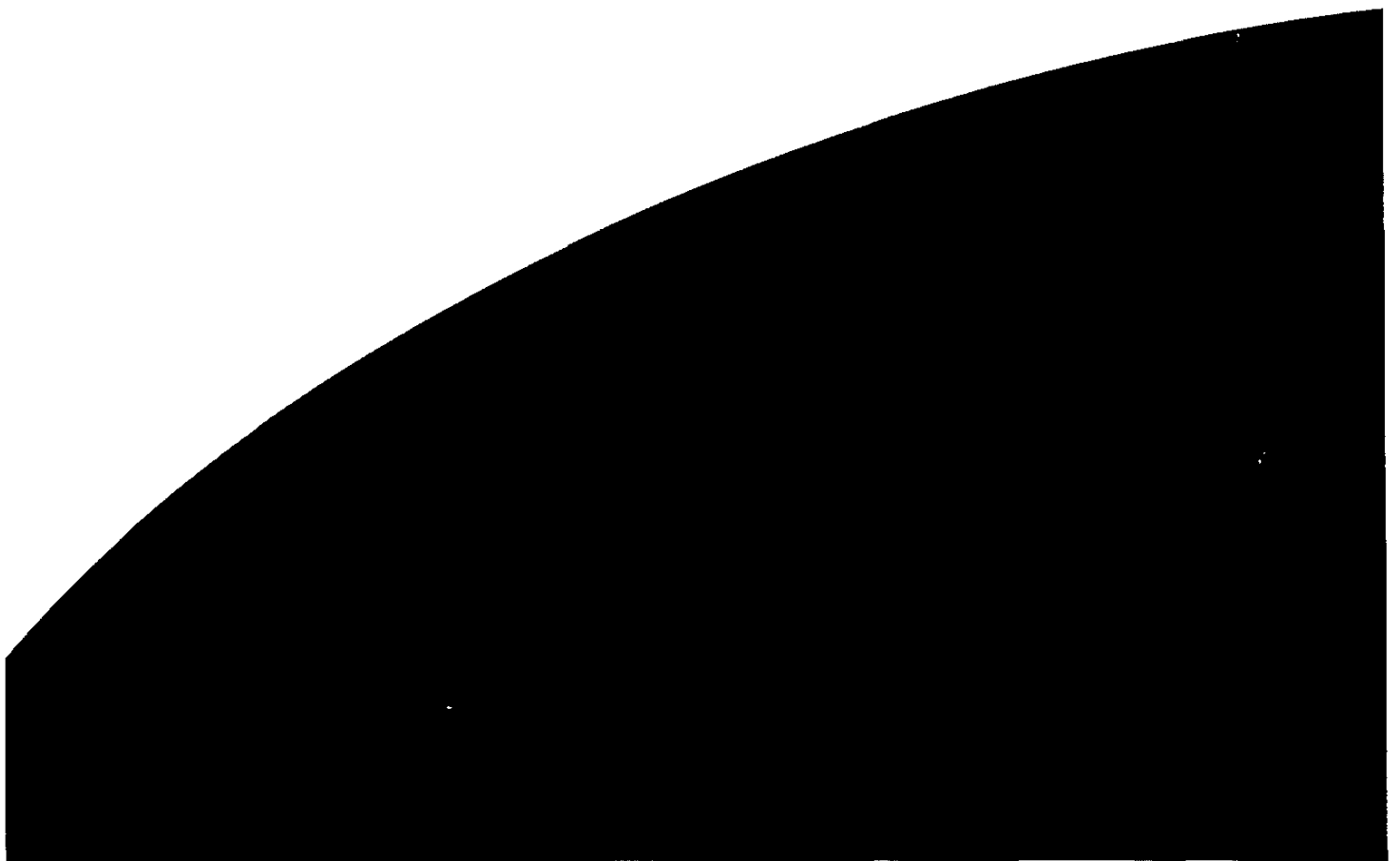
**FINANCIAL STATEMENTS FOR THE YEAR ENDED 31 MARCH 2013**

**INDEX**

<b>PAGE No</b>	<b>CONTENTS</b>
1a - 1j	Impact Report
1k - 1m	Trustees' Annual Report
2	Accountants Report
3	Statement of Financial Activities
4	Balance Sheet
5 - 10	Notes to the Accounts

# MedEquip4kids

The children's health charity  
Impact Report 2012 - 2013



Contents:

- 1c. Message from the Chief Executive
- 1d. Projects: Equipment
- 1e. Projects: Play & distraction
- 1f. Projects: Community
- 1g. Fundraising: Community & Events
- 1h. Fundraising: Companies & Trusts
- 1i. The year in figures
- 1j. Message from the Chair of Trustees



Rico House George Street Prestwich Manchester M25 9WS  
Registered charity number 1102830  
[www.medequip4kids.org.uk](http://www.medequip4kids.org.uk)

## Message from the Chief Executive...

At the end of my first year as Chief Executive of MedEquip4Kids, I am proud to see the charity increasing its impact on children's health in the North West. This year we have been able to provide equipment and facilities for 72 locations, benefiting a record 78,088 children and their families.

One highlight has been raising over £50,000 to fund lifesaving medical equipment for the new women's and children's unit at Royal Oldham Hospital. This was achieved thanks to the fantastic support and dedication of VINCI Construction UK and their partners.

As well as funding hospital equipment, the charity has a history of providing training tools for paediatric continence services to help disabled children overcome continence problems. This year for the first time we are funding services across the UK, including Scotland and Northern Ireland.

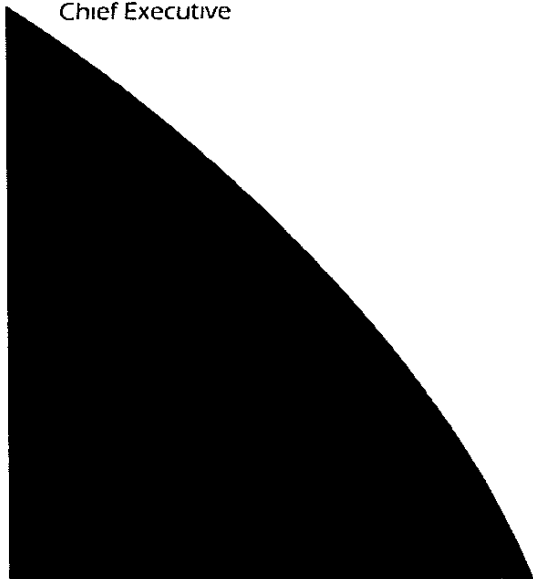
With so much going on, the MedEquip4Kids appeals office has had a busy year. In addition to our permanent staff, we have benefited from the skills and enthusiasm of a full-time graduate intern, a full-time apprentice, and two volunteers who have helped us promote the charity. We are grateful for their support and wish them well in their future careers.

Looking ahead, next year we will be supporting a major project at Fairfield General Hospital in Bury. The hospital is creating a separate paediatric accident and emergency unit and we will be providing medical equipment and toys to create a child-friendly waiting area.

Fundraising during the recession continues to be challenging, but achieving a reduction in our costs means more of the money we raise can be spent directly on hospital equipment. We are as always so grateful to the donors whose generosity supports us through difficult times. Thank you for everything you do.



Ghazala Baig  
Chief Executive



## Medical equipment for the region's sick children

We spent £79,250 on 82 items of medical equipment for 17 hospitals

We provided diagnostic equipment for the antenatal clinic and maternity unit at Macclesfield District General Hospital

£2,646



A major new development was completed at Royal Oldham Hospital, and their new women's and children's unit was opened. We provided an incubator and a ventilator for the neo natal unit. The new development was opened by the Countess of Wessex.

£17,071

### Josh and Sam's story.

Susie and Jon's twin boys were born at Tameside General Hospital 10 weeks early, weighing 4lb and 3lb 14oz, tiny compared to most newborns but reassuringly big for their gestation. The boys spent 12 days in Tameside's neo natal intensive care unit before being transferred to Wythenshawe for a further 3 and a half weeks.

"The boys were helped by amazing staff and vital equipment that had been donated by MedEquip4Kids," says Susie, who raised an incredible £1,100 to provide specially designed covers for incubators at the neo natal unit at Tameside Hospital. The covers help to reduce noise and light, allowing premature babies to benefit from a natural sleep cycle.



## Projects.

### Play and distraction for children in hospitals

MedEquip4Kids knows how important it is to keep children calm and relaxed during medical treatment

The children's play area at the Countess of Chester Hospital has been completely revamped, and we were thrilled to be involved in providing a secluded sensory garden for children and families

£16,514



We provided interactive sensory equipment for the children's ward at Warrington District General Hospital to help distract children who are undergoing painful treatment or examination

£8,000



We delivered the first phase of equipment, toys and decorations to the children's accident and emergency unit at Blackpool Victoria Hospital

£4,553

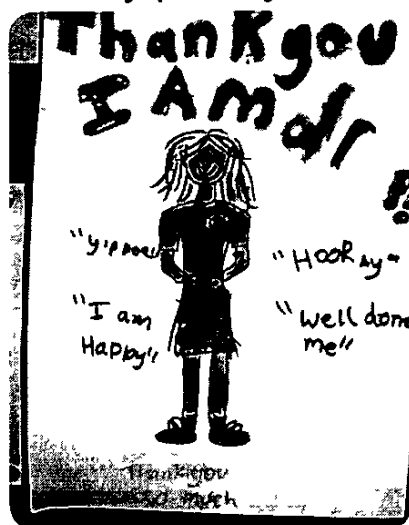


Part of the new build at the Royal Oldham Hospital included a new sensory room. This allows children who are stressed or scared to calm down and spend time away from the ward environment

£10,554

# Working with local communities

## Community Special Project 2013-2016



Our area of special focus this year was paediatric continence care. We established a dedicated fund to provide books, toys, potties, alarms, reference materials and training aids to help children overcome problems with potty training.



Problems with continence are hugely damaging to children's self-esteem. Over 60% of children experiencing difficulties with continence have a physical or learning disability, such as Down's syndrome or autism. Children with these disabilities struggle to recognise the signals to visit the toilet.

It can commonly take up to 18 months to potty train a child with a learning disability, and in the past many children would remain in nappies throughout their adult lives.



### Committed to Breastfeeding

This year saw the completion of our hugely successful project to support breastfeeding groups across the north of England. In the three years the project ran, we supported a total of 260 separate groups, benefiting approximately 16,000 babies each year.

We supplied floats, physiotherapy equipment and swimming aids to Firwood Special School in Bolton. The school takes its 70 pupils for regular hydrotherapy sessions, and this equipment now means that the most profoundly disabled children can join in and benefit from regular swimming sessions.

£887





# Thanks to everyone who made it possible... Community and Events

**May:** 187 runners took part in the 2012 BUPA Great Manchester 10k Run

**June.** Our intrepid MegaHikers braved floods in Calder Valley to take on the 50-mile trekking challenge

**July:** Olympic fever hit MedEquip4Kids as our patron Elizabeth Stones took part in the Olympic Torch relay in recognition of all her hard work

**September** Our trekkers set out from Horton in Ribblesdale to tackle the famous Yorkshire Three Peaks walk

**October** Over 100 cyclists completed the Lancashire Loop Cycle Challenge, covering 100, 50 or 18 miles through the Lancashire countryside

**November** 190 guests raised a fantastic £30,000 at the black-tie Shimmer Ball hosted by the VINCI committee

**December** 300 singers raised the roof at our Christmas Sing-along at Manchester Cathedral



Working together .



## Thanks to everyone who made it possible... Companies and Charitable Trusts

**VINCI Construction UK**, the contractor building the £32.8m five-storey women's and children's unit at Royal Oldham Hospital, organised numerous events to raise an amazing £51,792, which has funded an incubator, ventilator, multisensory room and monitoring equipment for the unit

To raise the money, company staff took part in the BUPA Great Manchester Run, a parachute jump, the Yorkshire Three Peaks, quiz nights and the glamorous black tie event, the VINCI Construction UK Summer Shimmer Ball

John Fowler, project manager at VINCI, said "It's a delight knowing the funds raised will purchase invaluable, lifesaving and life improving equipment which will be greatly appreciated by patients

Long-standing supporters **NG Bailey** were also part of the VINCI fundraising committee



### Thanks to...

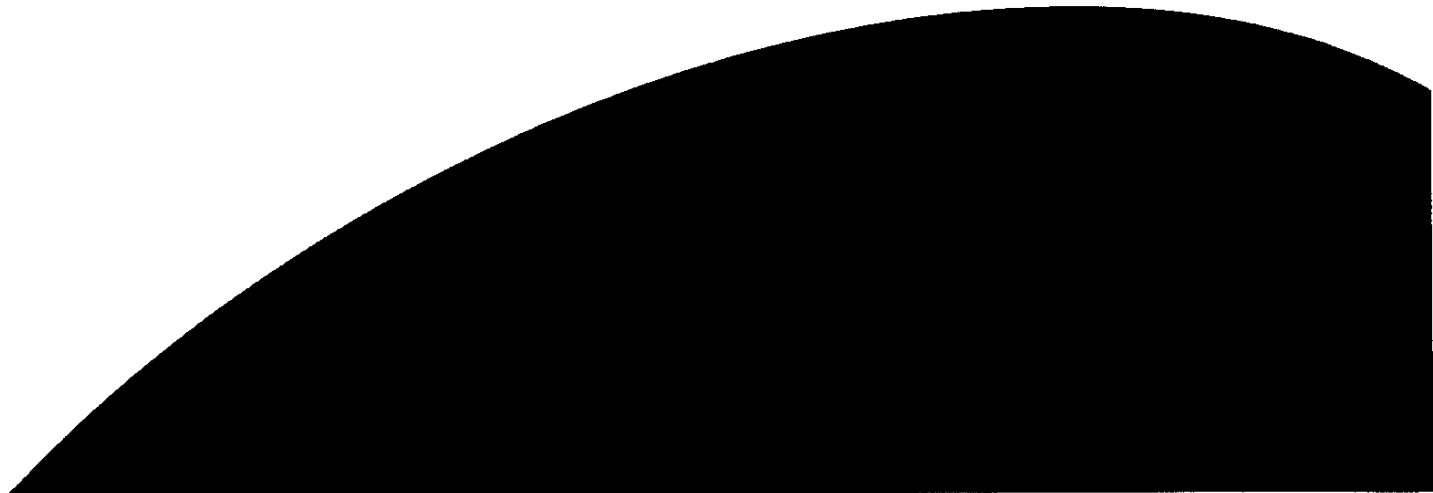
Salford-based **JMC IT**, who organised their own Olympic challenge during the games, in which staff could cycle, run, walk or row to raise funds for MedEquip4Kids. Altogether the team travelled 2,298km and raised £3,810. The company is planning an epic 33 Peaks Challenge next year and is hoping to raise an impressive £8,000



Thanks to **Barclays**, who once again entered a staff team into the Manchester 10k Run. Also to new supporters **CISI**, who chose us as the beneficiary of their annual dinner

### Charitable Trusts

It has been another successful year for fundraising from charitable trusts, with income increasing from last year. We are very grateful to all our donors for their support, but in particular to the Bradshaw Gass Charitable Trust, who have given over £37,000 in just three years to make sure babies in Bolton have access to the best medical equipment. We would like to thank regular donors the Zochonis Charitable Trust for their gift of £5,000, and the Bain Charitable Trust who gave £10,000 to fund neo natal equipment in Wigan. We were also very grateful to receive a bequest of £7,000 from the estate of the late Lawrence Harris



17 – hospitals helped

32 – continence teams helped

68 – number of projects delivered

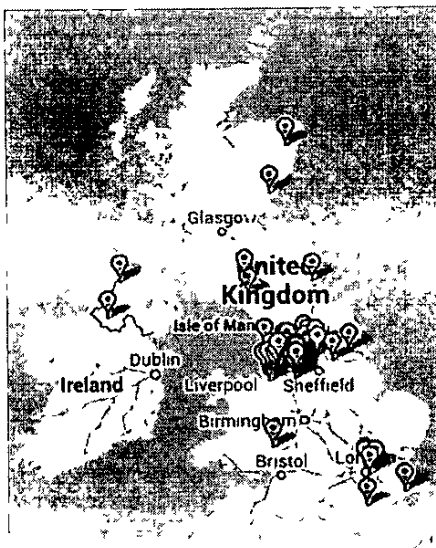
188 – items purchased and delivered to hospitals

495 – people walked, cycled, ran, swam or jumped out of a plane

3,579 – number of families collecting pennies at home

78,088 – children directly benefited from our work!

£56,583



Community projects  
2012-2013



Hospital and medical projects 2012-2013

For every £1 we spent, 62p was spent on improving children's health, 2p on running the charity and 36p was invested in fundraising to make another £1.

## Message from Brian White - Chair of Trustees

I am delighted to announce that in 2012-13, MedEquip4Kids has improved the health of more children than ever before, with a total of 78,088 benefiting from the medical equipment and facilities we provided in 72 hospitals, clinics and health centres across the North West

I am also pleased to report we have decided to expand our services nationwide, beginning with a project to fund continence training resources for disabled children. Achieving continence brings increased independence to disabled children, making a significant difference to their life prospects. To date, we have funded 32 paediatric continence services throughout the UK, and we will be inviting further applications in the coming year.

Summer 2012 was officially the summer of sport, and I was thrilled to see Elizabeth Stones representing us in the Olympic Torch relay. As one of our long-standing volunteers, Elizabeth has personally raised over £27,000 for MedEquip4Kids, and no one is more deserving of this honour than she is.

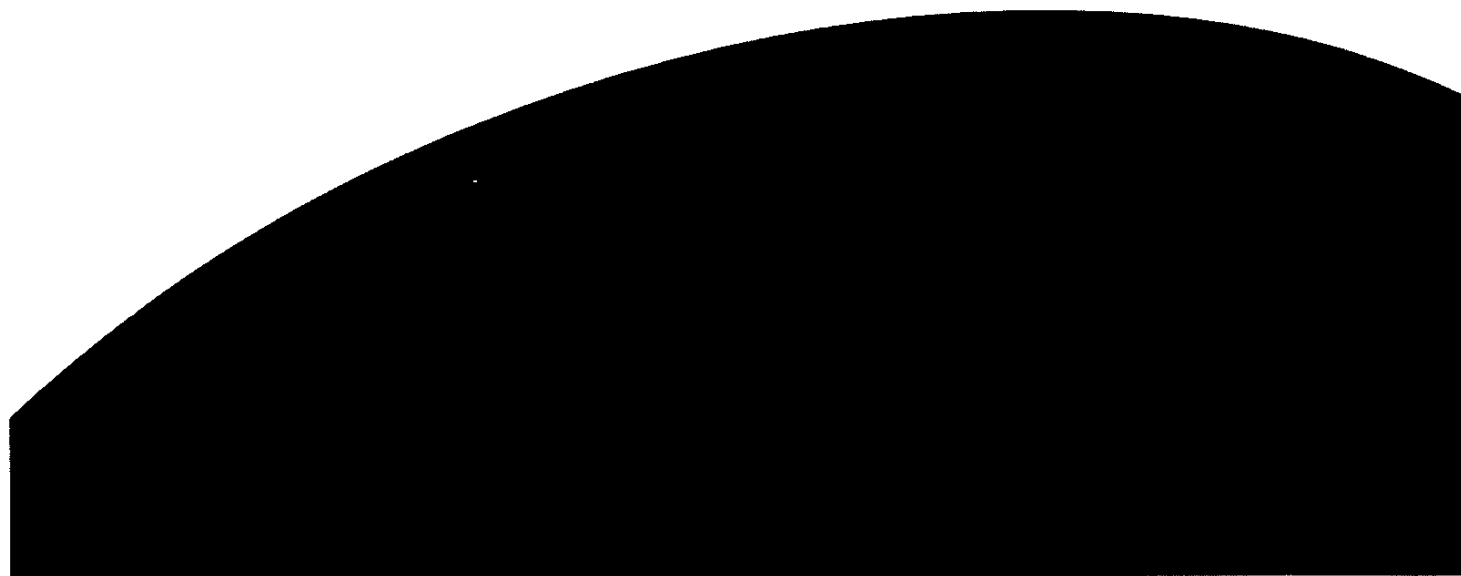
The economic climate continues to make it tough for charities to raise funds but this year we have managed to achieve improvements in our efficiency, meaning that for every pound we raise more will be spent directly on providing medical equipment and facilities. This improvement is thanks to the skills and hard work of our staff and volunteers.

Of course, everything we do is only possible because of the support of our donors. This year we're particularly grateful to VINCI Construction UK and their partners, who raised over £50,000 for Royal Oldham Hospital. I would also like to thank every group and individual who has given their money or time to help us make things better for children in hospital.

With best wishes to you all



Brian J White  
Chair of Trustees



# MEDEQUIP4KIDS LIMITED

1k

## TRUSTEES' ANNUAL REPORT FOR THE YEAR ENDED 31 MARCH 2013

The trustees are pleased to present the annual report of the charity for the year ended 31 March 2013

**CHARITY REGISTRATION NO** 1102830

**COMPANY REGISTRATION NO** 4655610

**REGISTERED ADDRESS** Rico House, George Street  
Manchester M25 9WS

**TRUSTEES** Director/Trustees who served during the year were as follows

Dr Ruth Jameson	Brian White	- Chairman
Brian Wilkins	Ian Harlow	- Deputy Chairman
David Finn	William Blumenthal	
Shulamit Pfeffer	David Joseph	
Harry Johnston	Alan Tatler	
	Michelle M Jarvis (appointed 01/08/2012)	

### Trust Directors

Ghazala Baig - Chief executive

### Incorporation

The company was incorporated on 4th February 2003 as Boxwall Limited. It changed its name to Children's Hospital Appeals Trust Limited on 10 April 2003. On 7th June 2004 it changed its name to MedEquip4Kids Limited.

### How Our Activities Achieve Public Benefit

The Charity carries out a wide range of activities in pursuance of its charitable aims. The Trustees consider that these activities detailed below and in the Impact report provide benefit to the public.

### Constitution, Objects and Policies

The charitable trust is constituted as a company limited by guarantee and is therefore governed by a Memorandum and Articles of Association.

The objects of the charity are to promote

- the relief of sickness and the preservation and protection of the health of children and young people by the provision of equipment and amenities to aid their recovery at all Children's Hospitals & Units
- research into sickness among children and young people and to disseminate and publish the useful results for the benefit of the public

In the furtherance of these charitable objects, the charity is to raise funds and invite and receive from any person or persons whatsoever by way of subscription, donation & otherwise, provided that the charity does not undertake any permanent trading activities in raising funds for their charitable objects.

### Principal Bankers

Barclays Bank plc  
1 Victoria Avenue  
Blackley  
Manchester  
M9 6RA

### Auditor

H Davies & Co  
Chartered Certified Accountants & Registered Auditors  
69 Windsor Road  
Prestwich  
Manchester  
M25 0DB

TRUSTEES' ANNUAL REPORT FOR THE YEAR ENDED 31 MARCH 2013 Cont

**Honorary Solicitors**

Gorvins  
Tiviot Dale  
Stockport  
South Manchester  
SK1 1TA

**Fixed Assets**

Details of movements in fixed assets are shown in note 10 to the financial statements. Fixed assets are used for the management of the charity.

**Investment Policy and Returns**

Under the trust deed the charity has the power to make any investment which the trustees see fit. The trustees have considered the most appropriate policy for investing funds and have found that placing funds on deposit meet their requirements given the secure nature and accessibility of the funds. The trustees consider the return to be reasonable given the low risk nature of the deposits. However, this overall low risk policy is subject to periodic review.

Donated investments are held and realised at an appropriate time.

**Information Technology**

The company continues to invest in technology suitable to improve its performance in the charity sector.

**Review of the Result and Reserves Policy**

The trustees consider that the results set out in the attached accounts are satisfactory. They are of the opinion that the balance on the reserves are sufficient to meet any future commitments under the terms of funding.

It is the policy of the charity to maintain unrestricted funds at a level which covers current commitments under the terms of their funding.

**Statutory Requirements**

The financial statements have been prepared in accordance with the Statement of Recommended Practice for charities, the Companies Act and the governing document.

**Risk Management**

The trustees have examined the major strategic, business and operational risks that the charity faces and confirm that systems have been established to enable regular reviews to be carried out so that necessary steps can be taken to lessen these risks.

**Description of Organisation**

The charity is run by a team of volunteer trustees who manage the direction and policies of the charity. The day to day management is run by the director of fundraising who is supported by a team of fundraising and administrative staff and volunteers.

## TRUSTEES' ANNUAL REPORT FOR THE YEAR ENDED 31 MARCH 2013 Cont .

**Financial Review**

Donations and event income have reduced due to the continuing recession. However there has been a reduction in event and fundraising costs.

Overhead and collection costs have reduced and further reductions are expected in the ensuing year.

Direct charitable expenditure decreased as income was down during the year.

Funds are available to permit the charity to continue in operation in the medium to long term and to continue to fund worthwhile projects (see Impact Report).

Arrangements are in hand to continue to raise funds to finance the charities activities and projects.

Reserves as stated in the accounts are as follows

Unrestricted funds	69,181
Designated Funds	-
Restricted funds	61,423
Total	<u>130,604</u>

**Statement of Trustees' Responsibilities**

Charity Law requires the trustees to prepare the financial statements for each financial year which give a true and fair view of the state of affairs of the Charity as at the Balance Sheet date and of its surplus or deficit for that year. In preparing those financial statements, the trustees are required to

- select suitable accounting policies and then apply them consistently,
- make adjustments and estimates that are reasonable and prudent,
- state whether the policies adopted are in accordance with the relevant legislation and with applicable accounting standards, subject to any material departures disclosed and explained in the financial statements,
- prepare the financial statements on a going concern basis unless it is inappropriate to presume that the Charity will continue in business.

The trustees are responsible for keeping proper accounting records which disclose with reasonable accuracy at any time its financial position and to ensure that the financial statements comply with the Statement of Recommended Practice, Accounting and Reporting by Charities SORP (March 2005), applicable accounting standards and the Companies Act 2006. They are also responsible for safeguarding its assets and hence for taking reasonable steps for the prevention of fraud and other irregularities.


**Auditors**

A resolution for the reappointment of H Davies & Co will be proposed at the forthcoming general meeting.

This report has been prepared in accordance with the provisions in Part 15 of the Companies Act 2006 applicable to companies subject to the small companies regime.

On Behalf of the Board of Trustees

  
Mr Brian White (Chairman)

  
Mr Ian Harlow (Deputy Chairman)

**Independent examiner's report to the trustees of "Medequip4Kids Limited"**

I report on the accounts of the company for the year ended 31st March 2013, which are set out on pages 4 to 10

**Respective responsibilities of trustees and examiner**

The trustees (who are also the directors of the company for the purposes of company law) are responsible for the preparation of the accounts. The trustees consider that an audit is not required for this period under section 144(2) of the Charities Act 2011 (the 2011 Act) and that an independent examination is needed.

The charity's gross income exceeded £250,000 and I am qualified to undertake the examination by being a qualified member of Association of the Chartered Certified Accountants.

Having satisfied myself that the charity is not subject to audit under company law and is eligible for independent examination, it is my responsibility to

examine the accounts under section 145 of the 2011 Act,

to follow the procedures laid down in the general Directions given by the Charity Commission under section 145(5)(b) of the 2011 Act, and

to state whether particular matters have come to our attention.

**Basis of independent examiner's report**

My examination was carried out in accordance with the general directions given by the Charity Commission. An examination includes a review of the accounting records kept by the charity and a comparison of the accounts presented with those records. It also includes consideration of any unusual items or disclosures in the accounts, and seeking explanations from you as trustees concerning any such matters. The procedures undertaken do not provide all the evidence that would be required in an audit and consequently no opinion is given as to whether the accounts present a 'true and fair view' and the report is limited to those matters set out in the statement below.

**Independent examiner's statement**

In connection with our examination, no matter has come to my attention

(1) which gives me reasonable cause to believe that in any material respect the requirements to keep accounting records in accordance with section 386 of the Companies Act 2006 and to prepare accounts which accord with the accounting records, comply with the accounting requirements of section 396 of the Companies Act 2006, and with the methods and principles of the Statement of Recommended Practice Accounting and Reporting by Charities have not been met, or

(2) to which, in my opinion, attention should be drawn in order to enable a proper understanding of the accounts to be reached.



H Davies & Co  
Chartered Certified Accountants and Registered Auditors  
69 Windsor Road  
Prestwich Manchester  
M25 0DB

1st December 2013



**STATEMENT OF FINANCIAL ACTIVITIES  
FOR THE YEAR ENDED 31 MARCH 2013**

INCOME AND EXPENDITURE	Notes				Year	Year
		Unrestricted Funds General	Unrestricted Funds Designated	Restricted Funds	Ended 31 03 13 Total Funds	Ended 31 03 12 Total Funds
		£	£	£	£	£
<b>INCOMING RESOURCES</b>						
Donations and Gifts		225,617		134,790	360,407	321,830
Donations in Kind	2/18	-		5,553	5,553	7,414
Savings Achieved	3	-		20,044	20,044	24,027
Events UK and International		108,172			108,172	211,822
Bank Interest Received (Gross)		755			755	928
<b>TOTAL INCOMING RESOURCES</b>		<u>334,544</u>	-	<u>160,387</u>	<u>494,931</u>	<u>566,021</u>
<b>RESOURCES EXPENDED</b>						
Costs of Generating Funds	4	207,374	-	5,192	212,566	252,597
Direct Charitable Expenditure	5	177,219	-	127,578	304,797	284,938
Governance Costs	6	8,449	-	361	8,810	10,192
<b>TOTAL RESOURCES EXPENDED</b>	8	<u>393,042</u>	-	<u>133,131</u>	<u>526,173</u>	<u>547,727</u>
<b>NET (OUTGOING)/INCOMING RESOURCES</b>		(58,498)	-	27,256	(31,242)	18,294
<b>RECONCILIATION OF FUNDS</b>						
Funds Brought Forward	15/16	127,679	-	34,167	161,846	143,552
Transfer between funds		-		-	-	-
<b>Funds Carried Forward</b>	15/16	<u>69,181</u>	-	<u>61,423</u>	<u>130,604</u>	<u>161,846</u>

## BALANCE SHEET AS AT 31 MARCH 2013

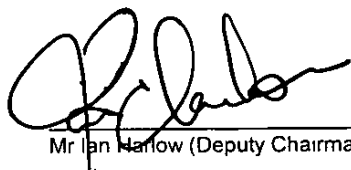
	Notes	2013		2012	
		£	£	£	£
<b>FIXED ASSETS</b>					
Tangible Fixed Assets	10		385		982
Investments	11		-		2,000
<b>CURRENT ASSETS</b>					
Debtors	13	26,910		65,361	
Cash at Bank		195,730		177,903	
Cash in Hand		105		1	
		<u>222,745</u>		<u>243,265</u>	
<b>LIABILITIES</b>					
Amounts falling due within one year	14	<u>92,526</u>		<u>84,401</u>	
<b>NET CURRENT ASSETS</b>			130,219	158,864	
<b>TOTAL NET ASSETS</b>			<u>130,604</u>	<u>161,846</u>	
<b>REPRESENTED BY</b>					
<b>ACCUMULATED FUNDS</b>					
Unrestricted	16		69,181		127,679
Designated Funds	16				-
Restricted	16		<u>61,423</u>		<u>34,167</u>
			<u>130,604</u>		<u>161,846</u>

The directors are satisfied that the company is entitled to exemption from the requirement to obtain an audit under section 477 of the Companies Act 2006

Members have not required the company to obtain an audit in accordance with section 476 of the Act

The directors acknowledge their responsibilities for complying with the requirements of the Companies Act 2006 with respect to accounting records and the preparation of accounts

The accounts have been prepared in accordance with the provisions in Part 15 of the Companies Act 2006 applicable to companies subject to the small companies regime



Mr Ian Harlow (Deputy Chairman)

Approved on behalf of the Directors/Trustees on 18th December 2012

The accounts have been prepared in accordance with the provisions in Part 15 of the Companies Act 2006 applicable to companies subject to the small companies regime

The attached notes form an integral part of these financial statements

## NOTES TO THE ACCOUNTS FOR THE YEAR ENDED 31 MARCH 2013

**1 ACCOUNTING POLICIES**

**1 1** The financial statements have been prepared under the historical cost convention, with the exception of investments which are included at market value. The financial statements have been prepared in accordance with the Statement of Recommended Practice, Accounting and Reporting by Charities SORP (March 2005), applicable accounting standards and the Companies Act 2006.

**1 2 Incoming Resources**

- ~ Unrestricted funds are available for use at the discretion of the trustees in furtherance of the general objectives of the charity
- ~ Restricted funds are subjected to restrictions on their expenditure imposed by the donor or through the terms of an appeal

All incoming resources are included in the statement of financial activities when the charity is entitled to the income and the amount can be quantified with reasonable accuracy. The following specific policies are applied to particular categories of income:

- ~ Grants and investment income are reflected in the accounts when receivable
- ~ Grants which relate to a specified future period are deferred
- ~ Donations, gifts and other income are reflected in the accounts when received

**1 3 Resources Expended**

All expenditure other than that capitalised has been reflected in the Statement of Financial Activities on an accruals basis.

Expenditure includes any VAT which cannot be fully recovered, and is reported as part of the expenditure to which it relates.

Charitable expenditure includes those costs incurred by the charity in the delivery of its activities and services for its beneficiaries. It includes both costs that can be allocated directly to such activities and those costs of an indirect nature necessary to support them.

Governance costs include those costs associated with meeting the constitutional and statutory requirements of the charity and include the audit fees and costs linked to the strategic management of the charity.

Costs of generating funds comprise the costs associated with attracting voluntary income and the costs of events for fundraising purposes.

**1 4 Valuation, Capitalisation and Depreciation of Fixed Assets**

Fixed assets are stated at cost less accumulated depreciation. The costs of minor additions or those costing below £500 are not capitalised. Depreciation is provided at rates calculated to write off the cost of each asset over its expected useful life, as follows:

Fixtures and Fittings & Office equip      20% on cost

**1 5 Taxation**

The organisation is exempt from income tax by reason of its charitable status. Income tax suffered on investment income is reclaimed in full. The organisation is not registered for value added tax but can claim exemption from certain purchases (see note 3).

**1 6 Investments**

Investments are stated at market value at the balance sheet date.

**1 7 Pensions**

The company operates a defined contribution pension scheme. Contributions are charged to the Statement of Financial Activities as they become payable in accordance with the rules of the scheme.

**2 DONATIONS IN KIND**

The amounts shown of £5,553 (2012: £7,414) were valued by the Director of Administration.

**3 SAVINGS ACHIEVED (BENEFITS CONFERRED BY CHARITABLE STATUS)**

As a result of its charitable status, the charity has achieved savings on the buying of medical equipment for the hospitals at discounts/donations for £20,043 (2012: £24,027) net of VAT estimated by the Director of Fundraising.

Other benefits brought about by the charity which were not included in the Statement of Financial Activities were savings achieved on its obtaining Value Added Tax exemption on the purchase of medical equipment and building costs. The amount saved as calculated by the Director of Fundraising was £26,514 (2012: £18,455).

## NOTES TO THE ACCOUNTS FOR THE YEAR ENDED 31 MARCH 2013

4	<b>COST OF GENERATING FUNDS</b>	<b>Unrestricted Funds</b>	<b>Restricted Funds</b>	<b>Total 2013 £</b>	<b>Total 2012 £</b>
	Staff Salaries & Pensions	66,565	-	66,565	77,031
	Travel & Motor Expenses	2,207	-	2,207	0
	UK and International Events	71,226	3,192	74,418	86,794
	United Kingdom Events	0	-	-	-
	Home Money Boxes	2,710	-	2,710	3,111
	Committees, Groups & Associations	1,933	-	1,933	357
	Corporate & Charitable Trusts	2,051	-	2,051	12,266
	Donor Dev and other fundraising costs	789	-	789	4,394
	Newsletter and printing	3,369	-	3,369	-
	Donated Prizes/Goods	3,192	-	3,192	7,414
	Support Costs (see note 7)	53,332	2,000	55,332	61,230
		<u>207,374</u>	<u>5,192</u>	<u>212,566</u>	<u>252,597</u>
5	<b>CHARITABLE EXPENDITURE</b>	<b>Unrestricted Funds £</b>	<b>Restricted Funds £</b>	<b>Total 2013 £</b>	<b>Total 2012 £</b>
	Schools and Project Programmes	28,126	-	28,126	17,645
	Support costs	59,943	-	59,943	66,332
	Medical Equipment Donated	89,150	107,534	196,684	176,934
		<u>177,219</u>	<u>107,534</u>	<u>284,753</u>	<u>260,911</u>
	<b>Saving achieved - Note 3</b>	<u>0</u>	<u>20,044</u>	<u>20,044</u>	<u>24,027</u>
	<b>TOTAL CHARITABLE EXPENDITURE</b>	<u>177,219</u>	<u>127,578</u>	<u>304,797</u>	<u>284,938</u>
6	<b>GOVERNANCE COSTS</b>	<b>Unrestricted Funds £</b>	<b>Restricted Funds £</b>	<b>Total 2013 £</b>	<b>Total 2012 £</b>
	Insurance	1,866	-	1,866	1,467
	Audit and Accountancy Fees	3,007	-	3,007	5,024
	Donated accountancy	-	361	361	-
	Food, Drinks & Catering Costs	276	-	276	334
	Wages and salaries	3,300	-	3,300	3,367
		<u>8,449</u>	<u>361</u>	<u>8,810</u>	<u>10,192</u>

Governance costs include payments to the reporting accountants of £3,007 (2012 auditors fees of £5,024) in respect of accountancy (2012 - audit) fees

## NOTES TO THE ACCOUNTS FOR THE YEAR ENDED 31 MARCH 2013

7

	Unrestricted Funds	Restricted Funds	Total 2013	Total 2012
<b>SUPPORT COSTS</b>				
	£	£	£	£
Staff Salaries & Pensions	79,458	-	79,458	84,030
Postage, Printing, Stationery	3,370	-	3,370	12,645
Travel and mileage	2,208	-	2,208	5,830
Offices Costs incl Telephone & Light & Heat	13,920	-	13,920	13,142
Repairs, Computer Maintenance	9,275	-	9,275	8,393
General Expenses	819	-	819	1,166
Training & Conferences	970	-	970	1,154
Donated professional fees	2,000	2,000	4,000	-
Bank Charges	658	-	658	472
Depreciation and amortisation	2,597	-	2,597	730
	<u>115,275</u>	<u>2,000</u>	<u>117,275</u>	<u>127,562</u>
Charitable expenditure	59,943	-	59,943	66,332
Cost of generating funds	53,332	2,000	55,332	61,230
	<u>113,275</u>	<u>2,000</u>	<u>115,275</u>	<u>127,562</u>

8

**TOTAL RESOURCES EXPENDED**

	Staff Costs	Depreciation Assets Loss	Other Costs	Total 2013	Total 2012
	£	£	£	£	£
Costs of Generating Funds	66,565	-	90,669	157,234	191,367
Services Provided	71,146	-	173,708	244,854	218,606
Governance Costs	3,300	-	5,510	8,810	10,192
Support	79,458	2,597	33,220	115,275	127,562
	<u>220,469</u>	<u>2,597</u>	<u>303,107</u>	<u>526,173</u>	<u>547,727</u>

	£	£
Staff Costs		
Wages and Salaries	202,201	222,645
Social Security Costs	16,875	21,124
Redundancy and Pay in Lieu	-	-
Pension Costs	1,393	2,407
	<u>220,469</u>	<u>246,176</u>

No employee earned £60,000 per annum or more

The average number of employees, analysed by function was

Services	5	5
Fundraising and Publicity	4	4
Management and Administration	2	2
	<u>11</u>	<u>11</u>

	2013 £	2012 £
<b>Other Costs</b>		
Medical Equipment & Savings Achieved	166,107	134,251
Schools Programme	2,024	2,609
Fundraising & Other Expenses	85,093	106,922
Travel & Motor	6,623	5,830
Insurance	1,866	1,467
Printing, Stationery, Telephone & Office Costs	24,028	25,785
Professional & Accounting	3,368	5,024
Minor Equipment & Repairs	9,275	8,393
Sundries, Books etc	2,065	2,654
Bank Charges	658	472
Donated Costs	2,000	7,414
	<u>303,107</u>	<u>300,821</u>

## NOTES TO THE ACCOUNTS FOR THE YEAR ENDED 31 MARCH 2013

## 9 TRUSTEES' REMUNERATION AND EXPENSES

No remuneration, directly or indirectly out of the funds of the charity, was paid or payable, to any trustee or to any persons known to be connected with any of them  
No reimbursement of expenses has been made, or is due to be made, to any of the trustees in respect of the period

## 10 TANGIBLE FIXED ASSETS

	Office Equipment £	Fixtures & Fittings £	Total £
<b>COST</b>			
At 1 April 2011	11,509	365	11,874
Additions	-	-	-
At 31 March 2012	<u>11,509</u>	<u>365</u>	<u>11,874</u>
<b>DEPRECIATION</b>			
At 1 April 2011	10,528	364	10,892
Charge for Year	597	-	597
At 31 March 2012	<u>11,125</u>	<u>364</u>	<u>11,489</u>
<b>NET BOOK VALUE</b>			
At 31 March 2012	<u>384</u>	<u>1</u>	<u>385</u>
At 31 March 2011	<u>981</u>	<u>1</u>	<u>982</u>

## 11 INVESTMENTS

	2013 £	2012 £
At 1 April	-	2,000
Market Value of Investments at 31 March	<u>-</u>	<u>2,000</u>

Investments have been valued by the trustees taking into account the restrictions placed on the investments  
Investments consist of UK listed investments £nil and overseas listed investments £2,000

## 12 CAPITAL COMMITMENTS

	2013 £	2012 £
Contracted for but not provided	<u>nil</u>	<u>nil</u>

## 13 DEBTORS

	2013 £	2012 £
Prepayments	22,390	61,478
Gift aid tax	4,520	3,883
	<u>26,910</u>	<u>65,361</u>

## 14 LIABILITIES AMOUNTS FALLING DUE WITHIN ONE YEAR

	2013 £	2012 £
Accruals	87,873	79,315
Other taxes and social security costs	4,653	5,086
	<u>92,526</u>	<u>84,401</u>

## NOTES TO THE ACCOUNTS FOR THE YEAR ENDED 31 MARCH 2013

## 15 ANALYSIS OF NET ASSETS BETWEEN FUNDS

	Fixed Assets £	Net Current Assets £	Total 2013 £	Total 2012 £
Total restricted funds	-	61,423	61,423	34,167
Designated funds	-	-	-	-
Unrestricted funds	385	68,796	69,181	127,679
	<u>385</u>	<u>130,219</u>	<u>130,604</u>	<u>161,846</u>

## 16 RESTRICTED FUNDS

	Balance at <u>01/04/12</u>	Incoming	Outgoing	Transfer	Balance at <u>31/03/13</u>
Blackburn Hospital	-	2,110	2,110	-	-
Blackpool Victoria	-	5,941	4,553	-	1,388
Bolton Physiotherapy Team	-	2,463	1,012	-	1,451
Calderdale Hospital	1,317	2,500	1,312	-	2,505
St Helens C2B	1,000	1,615	2,615	-	-
Contenance equipment	-	12,107	12,107	-	-
Countess of Chester	4,500	2,035	6,535	-	-
Fairfield Hospital	-	14,501	-	-	14,501
Macclesfield District General	425	90	515	-	-
North Manchester General Hospital	-	1,077	750	-	327
Ormskirk & District Gen Hospital	5,823	7,299	13,122	-	-
Other	-	854	-	-	854
Practical parenting Stockport	-	500	500	-	-
Rochdale Infirmary	-	245	245	-	-
Royal Bolton Hospital	1,900	25,200	27,100	-	-
Royal Oldham Hospital	18,652	27,523	27,625	-	18,550
Stepping Hill Hospital	550	9,145	4,371	-	5,324
The Children's Air Ambulance	-	5,000	-	-	5,000
Warrington Disability Partnership	-	1,848	1,848	-	-
Warrington	-	1,464	1,214	-	250
Wigan infirmary	-	11,273	-	-	11,273
Gifts in kind and savings achieved	-	25,597	25,597	-	-
	<u>34,167</u>	<u>160,387</u>	<u>133,131</u>	<u>-</u>	<u>61,423</u>
<b>UNRESTRICTED FUNDS</b>					
General funds	127,679	334,544	393,042	-	69,181
	<u>161,846</u>	<u>494,931</u>	<u>526,173</u>	<u>-</u>	<u>130,604</u>

## NOTES TO THE ACCOUNTS FOR THE YEAR ENDED 31 MARCH 2013

## 17 DONATIONS RECEIVED

These are donations received from the public for the purpose of purchasing paediatric medical equipment, funding enhancements to facilities that improve the delivery of children's healthcare and the operating costs of the charity

	2013	2012
	£	£
18 DONATED GOODS AND SERVICES		
<i>Fundraising and Publicity</i>		
Donated Prize/Goods		7,414
<i>Management and Administration</i>		
Donated Office Costs incl Telephone, Computer Exp, etc	-	-
	<u>-</u>	<u>7,414</u>