

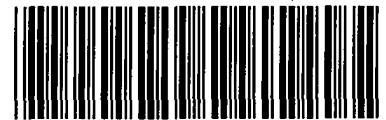
SIGNED COPY

1/3 BATHWICK TERRACE MANAGEMENT COMPANY LIMITED

REPORT AND FINANCIAL STATEMENTS

YEAR ENDED 31 DECEMBER 2014

TUESDAY



A40Y0LZ5

A12

10/02/2015

#177

COMPANIES HOUSE

J G BROWN

CHARTERED ACCOUNTANT

31 December 2014

DIRECTORS

S G M Moore (appointed 21 July 2014) Chairman
J G Brown
J W Payne
W P Stuart-Bruges
Mrs M W Mitchell (resigned 21 July 2014)

SECRETARY

Ms H Jepsen

REGISTERED OFFICE AND COMPANY NUMBER

2 Bathwick Terrace
Bathwick Hill
Bath
BA2 4EL

Company number 1614721

REPORT OF THE DIRECTORS

Year Ended 31 December 2014

The directors present their annual report together with the financial statements for the year ended 31 December 2014.

THE COMPANY

The company is limited by guarantee and does not have a share capital. The members comprise one from each of the four properties.

PRINCIPAL ACTIVITY

The principal activity of the company is the management of the properties known as Nos 1, 2, 3 & 4 Bathwick Terrace, Bath.

FREEHOLD REVERSION

The company holds the freehold reversion in Nos 1 to 4 Bathwick Terrace. Each of the four properties is held by a tenant under a lease expiring in the year 2980.

DIRECTORS

Each of the directors is a member of the company.

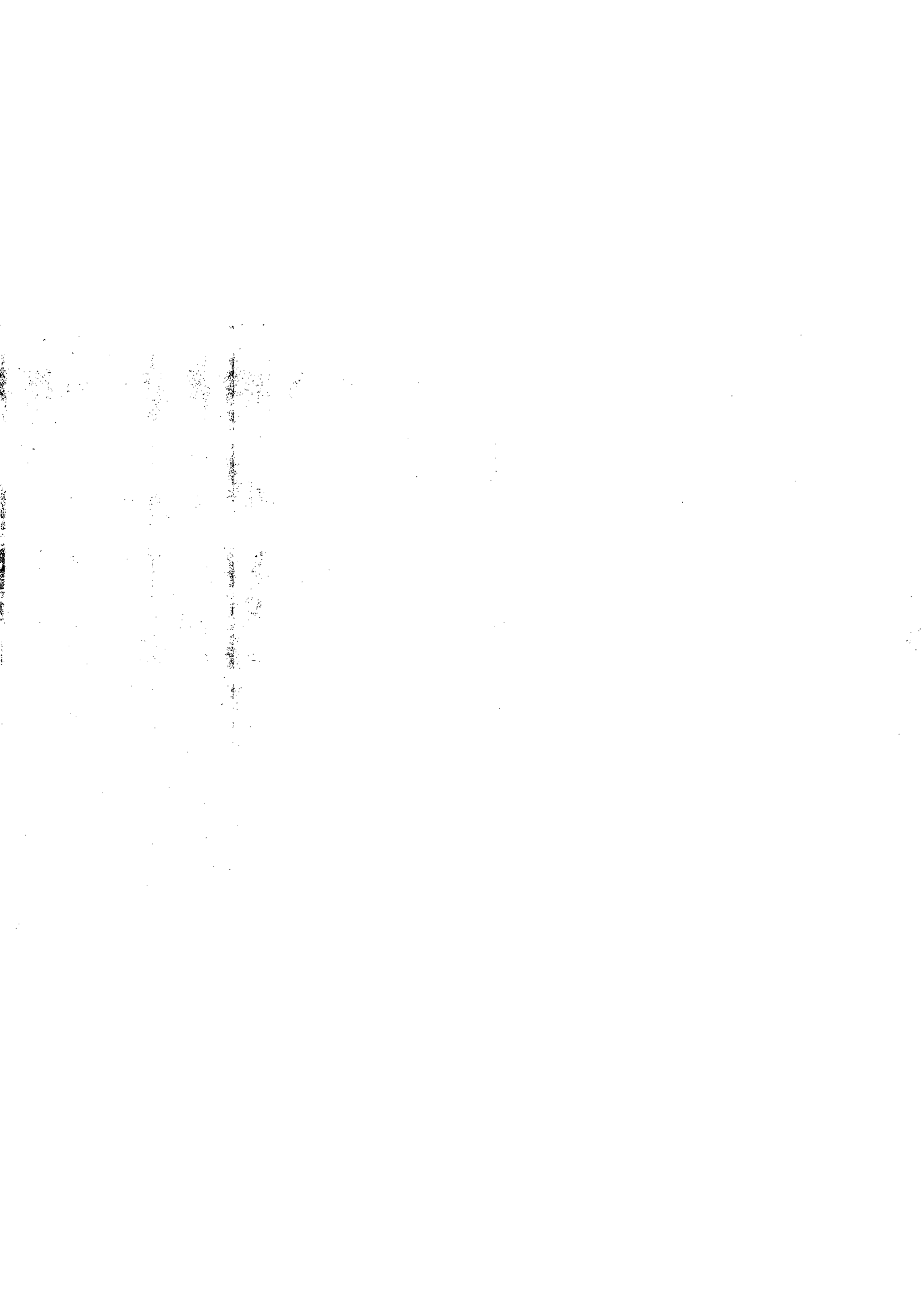
By order of the board



H JEFSEN

Secretary

30 January 2015




ACCOUNTANTS REPORT TO THE MEMBERS AND DIRECTORS

Year Ended 31 December 2014

I have prepared the financial statements on pages 4 and 5 from the accounting records of the company and from information and explanations supplied to me by the directors.

I have not carried out an audit in accordance with Auditing Standards. Accordingly I do not express an audit opinion on the accounts, nor am I able to provide any assurance that the accounts are free from material misstatement.



J.G BROWN

Chartered Accountant

30 January 2015

BALANCE SHEET

31 December 2014

	2014	2013
CURRENT ASSETS		
Balance at bank	1,716	1,012
Less: CURRENT LIABILITIES		
Creditors due within one year	<u>165</u>	<u>155</u>
NET CURRENT ASSETS	<u><u>£1,551</u></u>	<u><u>£857</u></u>
Financed by:		
PROFIT AND LOSS ACCOUNT		
Balance	<u>1,551</u>	<u>857</u>
	<u><u>£1,551</u></u>	<u><u>£857</u></u>

For the year ended 31 December 2014 the company was entitled to exemption from audit under s.477 of the Companies Act 2006 and the members have not required the company to obtain an audit in accordance with s.476 of the Act.

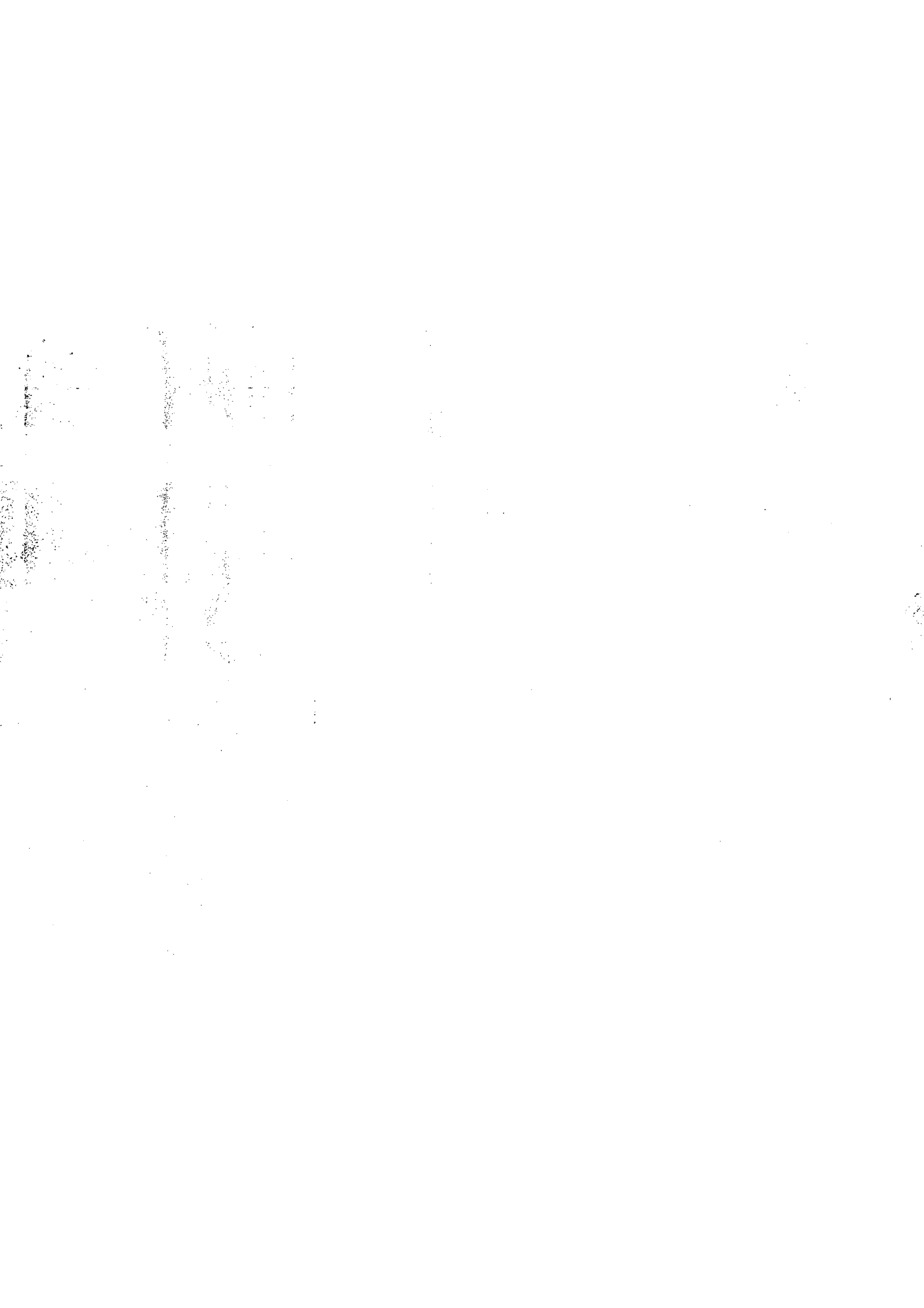
The directors acknowledge their responsibility for complying with the requirements of the Companies Act 2006, with respect to accounting records, and for the preparation of accounts and with respect to the Financial Reporting Standard for Smaller Entities.



S G M MOORE

Chairman

30 January 2015



PROFIT AND LOSS ACCOUNT

Year Ended 31 December 2014.

	2014	2013
TENANTS CONTRIBUTIONS		
Service charges & ground rents:		
No 1 (32%)	320	-
No 2 (31%)	310	-
No 3 (21%)	210	-
No 4 (16%)	160	-
	<u>1,000</u>	<u>-</u>
MANAGEMENT EXPENSES		
Electricity	148	118
Repairs to front gates	-	466
Repairs to forecourt wiring & lighting	85	-
Garden expenses	30	102
Sundry expenses	43	23
	<u>306</u>	<u>709</u>
SURPLUS(DEFICIT)	<u>694</u>	<u>(709)</u>
Balance brought forward from previous year	<u>857</u>	<u>1,566</u>
BALANCE CARRIED FORWARD	<u><u>£1,551</u></u>	<u><u>£857</u></u>

NOTE:

TAXATION

The company does not pay any tax on its surpluses or deficits, since it is not carrying on any business with a view to profit.