

Cape 31 Med Round I  
Porto Cervo 24 – 26 April 2026

# Cape 31 Med Round 1

## 24-26 April 2026



## SAILING INSTRUCTIONS ('Sis')

The Organising Authority (OA) is the Yacht Club Costa Smeralda under the authority of the Italian Sailing Federation in conjunction with the MED Cape 31 Regional Class Authority

*The notation '[NP]' in a rule of the Sailing Instructions (SIs) means that a boat may not protest another boat for breaking that rule and for which the Protest Committee may refuse to conduct a hearing (changes RRS 60.1 and 63.2(a)).*

### 1. RULES

The event is governed by the rules as defined in the Racing Rules of Sailing **2026-2028** (RRS).

### 2. CHANGES TO SAILING INSTRUCTIONS

- 2.1 Any change to the SIs will be posted before 09:00 on the day it will take effect, except that any change to the schedule of races will be posted by 20:00 on the day before it will take effect.

2.2 Changes to the SIs not only the schedule will be made as per #3.2 and #3.3 of the NoR.

2.3 Changes to the SIs may be made also on the water by announcement over VHF and confirmed, if practicable, via the Event Messaging System (WhatsApp).

### **3 COMMUNICATIONS WITH COMPETITORS**

3.1 See Notice of Race #3 regarding the Official Notice Board and Event Messaging system.

3.2 The race office is located at Piazza Azzurra, in front of the YCCS..

3.3 On the water, the race committee intends to monitor and communicate with competitors on VHF radio channel 72.

3.4 The following communications may be made by the race committee on VHF: location of race committee vessel, alternate preparatory signals, courses, postponement, abandonment, starting signals and general recalls.

3.5 If a change of VHF channel becomes necessary, the new channel will be communicated on VHF channel 72 and, if practicable, via the Event Messaging System.

### **4 [NP] CODE OF CONDUCT**

4.1 Competitors and support persons shall comply with all reasonable requests from OA and Committees.

4.2 Boats are required to display the flags provided by the OA as indicated in Appendix A of these SIs

### **5 SIGNALS MADE ASHORE**

Signals made ashore will be displayed on the flagpole on the YCCS terrace overlooking the regatta village in Piazza Azzurra. The display or removal of signals will be broadcast on the race committee channel.

When the AP flag is displayed ashore, '1 minute' is replaced with 'not less than 60 minutes' in the race signal AP. This changes RRS Race Signals, AP.

### **6 SCHEDULE OF RACES**

6.1 For the schedule of first warning signals of each day see Notice of Race #9.1. An amendment to the Sailing Instructions will be made in accordance with SIs #2 to announce the indicated start time for Day 2 and Day 3 of racing.

6.1 9 races are scheduled, with a maximum of 4 races per day.

### **7 CLASS FLAGS**

The class flag will be the Cape 31 logo on a black background.

## **8 RACING AREA**

The Racing Area will be in the waters outside the Marina of Porto Cervo.

## **9 COURSES**

9.1 The diagrams in **SIs** Addendum A show the course(s), including the approximate angles between legs, the order in which marks are to be rounded, and the side on which each mark is to be rounded.

9.2 No later than the warning signal, the race committee vessel will display the course signal and the approximate compass bearing of the first leg.

9.3 If either gate mark is missing, boats shall leave the remaining mark to port.

## **10 MARKS**

10.1 Robotic Marks are as follows:

Mark 1 - Cylindrical Red Robotic

Mark 1a - Cylindrical Red Robotic

Marks 4s and 4p - Cylindrical Red Robotic

10.2 In the event marks 1 and/ or 1a require changing, the original marks will be moved to the new positions.

10.3 The starting marks will be the race committee vessel displaying an orange flag, and an outer distance mark which will be a Cylindrical Red Robotic Mark.

10.4 The finishing marks will be the race committee vessel displaying a blue flag and an outer distance mark which will be Cylindrical Red Robotic Mark.

## **11 AUTOMATED OCS**

11.1 The Race Committee intends to use an Automated OCS system as described in the Notice of Race Appendix A.

11.2 The countdown to the start of each race displayed on a boat's automated OCS hardware (Atlas 2 or Atlas Edge) shall be the official time. Signal flags may be used for information purposes. This changes RRS 26.

11.3 The visual identification of boats infringing RRS 29 and 30 by the Race Committee with Flag X is replaced with electronic identification through the Vakaros RaceSense system, modifying RRS 29.1, 30.1, 30.2, 30.3, and 30.4.

11.4 Any alleged failure of the Atlas 2 or Atlas Edge, RaceSense system, or communication systems shall not be grounds for request for redress by a boat or the Protest Committee and *the Protest Committee may refuse to conduct a hearing for such requests*. This changes RRS 61.1(a), 61.1(c) and 63.2(a).

11.5 If the Race Committee vessel displays flag Oscar with a long sound signal before the warning signal of a race, **Sis #11.2** and **#11.3** shall not apply to that

race.

11.6 If the Race Committee vessel displays flag Romeo with a long sound signal before the warning signal of a race, Crew shall restart their Vakaros Atlas or Atlas Edge unit by switching it off, waiting 10 seconds and then switching it back on to reconnect to the RaceSense network. Flag R will remain displayed for a minimum of 2 minutes and will be removed with the next warning signal.

## **12 THE START**

12.1 Races will be started using RRS 26 with the warning signal made five minutes before the starting signal.

12.2 To alert boats that a race will begin soon, the orange starting line flag will be displayed with multiple sound signals not less than five minutes before a warning signal is displayed.

12.3 The starting line is defined as being between a staff displaying an orange flag on the race committee vessel and the windward side of the starting mark.

**12.4** If any part of a boat's hull is on the course side of the starting line at her starting signal and she is identified, the race committee will attempt to hail her bow or sail number on VHF radio. Failure to hail her number, failure to hear such a hail, or the order in which boats are hailed shall not be grounds for request for redress by a boat and the Protest Committee may refuse to conduct a hearing for such requests. This changes RRS 29.1, 61.1(a) and 63.2(a).

12.5 A boat that does not start within 4 minutes after her starting signal will be scored Did Not Start by the Race Committee without a hearing. This changes RRS A5.1

## **13 CHANGE OF THE NEXT LEG OF THE COURSE**

13.1 The race committee may change a leg of the course by the greater of up to ten degrees in bearing and/or 100m in length without a signal. This changes RRS 33.

13.2 The race committee will provide details of any signalled changes using VHF.

## **14 THE FINISH**

The finishing line is between a staff displaying a blue flag on the race committee vessel and the windward side of the finishing mark.

## **15 PENALTY SYSTEM**

See Circuit Notice of Race 14.

## **16 UMPIRE OBSERVATION**

16.1 Umpires may observe the racing and provide advisory umpire signals. If an umpire observes an incident where a boat protests, one of the following signals

may be made:

16.1.1 A green and white flag with one long sound means 'The umpires saw the incident and believe that no rule was broken'.

16.1.2 A red flag with one long sound means 'The umpires saw the incident and believe that one or more boat has broken a rule'. The umpires will hail or signal each boat identified to have broken a rule.

16.1.3 A Blue flag with one long sound means 'The umpires do not have the facts to make a decision'.

16.2 The signals displayed by the umpires are for information only. If a red flag is displayed, any identified boat is not obliged to take the applicable penalty, however if she does not, the Umpire, as part of the Protest Committee, may protest that boat.

16.3 If a green and white flag or the "Blue" flag is displayed, a boat may still protest, or a boat may choose to take the applicable penalty.

16.4 If a green and white flag is displayed for an incident, the Protest Committee will only protest a boat for an incident involving her that may have resulted in injury or serious damage, or if the protest committee learns during the hearing of a valid protest that the boat, although not a party to the hearing, was involved in the incident and may have broken a rule. This changes RRS 60.1 and 60.4(b).

## **17 TIME LIMITS AND TARGET TIMES**

17.1 The target time for each race is 45 minutes. Failure to meet this time shall not be grounds for request for redress by a boat and *the Protest Committee may refuse to conduct a hearing for such requests*. This changes RRS 61.1(a) and 63.2(a).

17.2 The Mark 1 time limit is 30 minutes.

17.3 The time limit for each race is 90 minutes.

17.4 If no boat has passed Mark 1 within the Mark 1 time limit, or if no boat has finished within the race time limit, the race shall be abandoned. This shall not be grounds for request for redress by a boat and *the Protest Committee may refuse to conduct a hearing for such requests*. This changes RRS 61.1(a) and 63.2(a).

17.5 The 'Finishing Window' is 20 minutes.

17.6 The 'Finishing Window' is the time for boats to *finish* after the first boat *sails the course*. Boats failing to *sail the course* within the 'Finishing Window' shall be scored "TLE" (points equal to the place after the last boat that *sailed the course* within the 'Finishing Window') without a hearing. This changes RRS 35, A5.1, A5.2 and A10.

## **18 HEARING REQUESTS**

18.1 The protest time limit is 60 minutes after the last boat finishes the last race of the day or the race committee signals no more racing today, whichever is later. The time will be posted on the official notice board and possibly repeated on the Circuit Messaging System.

18.2 Hearing requests can be requested directly on the Official Notice Board.

18.3 Notices will be posted no later than 30 minutes after the protest time limit to inform competitors of hearings in which they are parties or named as witnesses with approximate times for each hearing. Hearings will be held at the Jury room located in Piazza Azzurra where the Jury has a dedicated tent. Notices of hearings will be possibly repeated on the Circuit Messaging System.

## **19 SCORING**

See Notice of Race #17.

## **20 [NP] SAFETY REGULATIONS**

A boat that retires from a race shall notify the race committee via VHF before leaving the course, or, when that is impossible, immediately after arrival ashore by contacting the race office.

## **21 REPLACEMENT OF CREW OR EQUIPMENT**

**Not used.**

## **22 [NP] EQUIPMENT INSPECTION**

22.1 A boat or equipment may be inspected at any time for compliance with the class rules, notice of race and sailing instructions between the 1<sup>st</sup> scheduled warning signal and the protest time limit on the final day.

22.2 Boats shall not transfer any equipment (including but not limited to sails, safety equipment, rigging etc) on or off the boat until they have confirmed via the Event Messaging System that they have not been selected for post-race inspection. This confirmation will be via a message from the event technical committee listing the boats that have been selected for inspection. Boats selected for post-race inspection shall continue to be in a 'quarantine' state and not transfer equipment on or off the boat until completion of the inspection which will be confirmed by the technical committee. In addition, boats selected for post-race inspection shall follow all reasonable requests of the technical committee and present their equipment at the time and location specified by the technical committee.

22.3 If a boat's crew is selected for post-race weighing as per class rule C.2.2(b), the crew shall report to the location specified by the technical committee.

22.4 Boats and crew will be randomly selected using the Class Management System and notices of those boats and crew selected for post-race inspection and crew weighing shall be posted on the Event Messaging System.

22.5 At least one member of the crew shall monitor the Event Messaging System before returning ashore to establish if their boat has been selected for inspection or weighing.

## **23 SUPPLIED BOATS**

Not used.

## **24 OFFICIAL VESSELS**

24.1 The Race Committee vessel will be identified by a YCCS burgee.

24.2 Service vessels will be identified by a white flag with the letter "S".

24.3 The Umpires will display FLAG "U".

24.4 The Technical Committee will display FLAG "M".

24.5 MEDIA will display FLAG "P".

24.6 The Safety vessel will be identified by a White flag with red "+".

## **25 SUPPORT TEAMS**

All support vessels shall carry a VHF radio capable of receiving and transmitting on all marine channels including the channels indicated in these SI's.

## **26 TRASH DISPOSAL**

Trash may be placed aboard official vessels.

## **27 BERTHING**

Not used.

## **28 HAUL-OUT RESTRICTIONS**

Not used.

## **29 DIVING EQUIPMENT AND PLASTIC POOLS**

Not used.

## **30 PRIZES**

Prizes will be awarded as soon as possible after the racing on the last day at the regatta village in Piazza Azzurra.

## **31 RISK STATEMENT**

31.1 RRS 3 states: "The responsibility for a boat's decision to participate in a race or to continue racing is hers alone." Sailing is by its nature an unpredictable sport and therefore inherently involves an element of risk. By taking part in the event, each competitor agrees and acknowledges that:

31.1.1 They are aware of the inherent element of risk involved in the sport and accept responsibility for the exposure of themselves, their crew and their boat to such inherent risk whilst taking part in the event.

- 31.1.2 They are responsible for the safety of themselves, their crew, their boat, and their other property whether afloat or ashore.
- 31.1.3 They accept responsibility for any injury, damage or loss to the extent caused by their own actions or omissions.
- 31.1.4 Their boat is in good order, equipped to sail in the event and they are fit to participate.
- 31.1.5 The provision of a race management team, patrol boats and other officials and volunteers by the event organiser does not relieve them of their own responsibilities.
- 31.1.6 The provision of patrol boat cover is limited to such assistance, particularly in extreme weather conditions, as can be practically provided in the circumstances.
- 31.1.7 It is their responsibility to familiarise themselves with any risks specific to this venue or this event drawn to their attention in any rules and information produced for the venue or event and to attend any safety briefing held for the event.

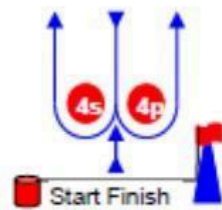
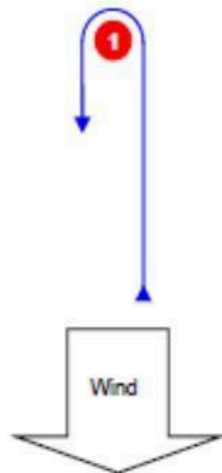
## **32 INSURANCE**

- 32.1 The OA requests from each participating boat a declaration of the boat's insurance company stating that the boat has a valid certificate of insurance including third party cover with a minimum value of Euro 1,500,000.00 per accident, including cover for racing and taking into account the value of the boats racing and the measure of damages likely to arise in the event of an accident.
- 32.2 The responsibility to hold adequate insurance cover for Third Liability and Third-Party Insurance (Property and Persons) is to the owners or the skippers alone.
- 32.3 The OA is not responsible for verifying the status or validity of insurance certificates.
- 32.4 Support boats shall register on the dedicated section of the entry form and collect the support boat identification flag at the race office during registration on 22 April. The support boat identification flag shall be displayed throughout the period starting one hour after the completion of registration and ending one hour after the finish of the last race of the regatta. The OA requests from each support boat a declaration of the boat's insurance company stating that the boat has a valid certificate of insurance including third party cover with a minimum value of Euro 1,500,000.00.

## Addendum A - Course Illustrations

### Course Illustrations – Windward Leeward

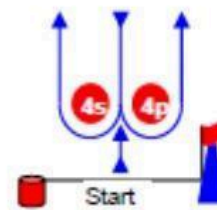
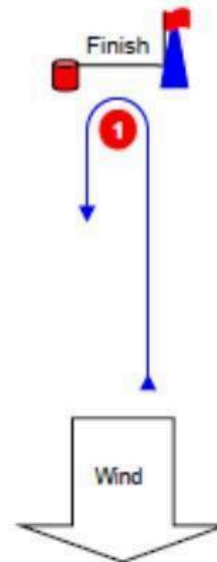
**L**



#### Course: Leeward finish

| Signal | Mark Rounding Order                                    |
|--------|--|
| L2     | Start – 1 – 4s/4p – 1 – Finish                         |
| L3     | Start – 1 – 4s/4p – 1 – 4s/4p – 1 – Finish             |
| L4     | Start – 1 – 4s/4p – 1 – 4s/4p – 1 – 4s/4p – 1 – Finish |

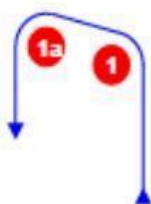
**W**



#### Course: Windward Finish

| Signal | Mark Rounding Order                                |
|--------|--|
| W2     | Start – 1 – 4s/4p – Finish                         |
| W3     | Start – 1 – 4s/4p – 1 – 4s/4p – Finish             |
| W4     | Start – 1 – 4s/4p – 1 – 4s/4p – 1 – 4s/4p – Finish |

**LA / WA**

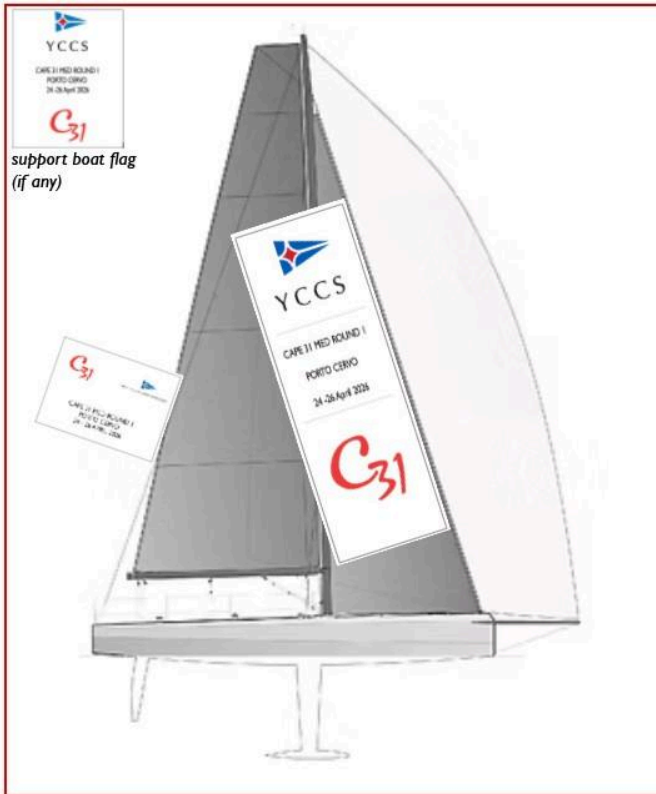


#### Course: Windward/leeward with offset mark 1a

| Signal | Mark Rounding Order  |
|--------|--|
| LA2    | Start – 1 – 1a – 4s/4p – 1 – 1a – Finish                                   |
| LA3    | Start – 1 – 1a – 4s/4p – 1 – 1a – 4s/4p – 1 – 1a – Finish                  |
| LA4    | Start – 1 – 1a – 4s/4p – 1 – 1a – 4s/4p – 1 – 1a – 4s/4p – 1 – 1a – Finish |
| WA2    | Start – 1 – 1a – 4s/4p – Finish  |
| WA3    | Start – 1 – 1a – 4s/4p – 1 – 1a – 4s/4p – Finish                           |
| WA4    | Start – 1 – 1a – 4s/4p – 1 – 1a – 4s/4p – 1 – 1a – 4s/4p – Finish          |

## Appendix A -

### Flags Ashore:



### Flags when racing:

