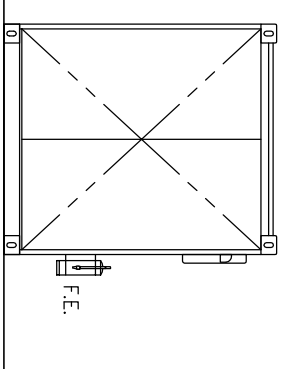
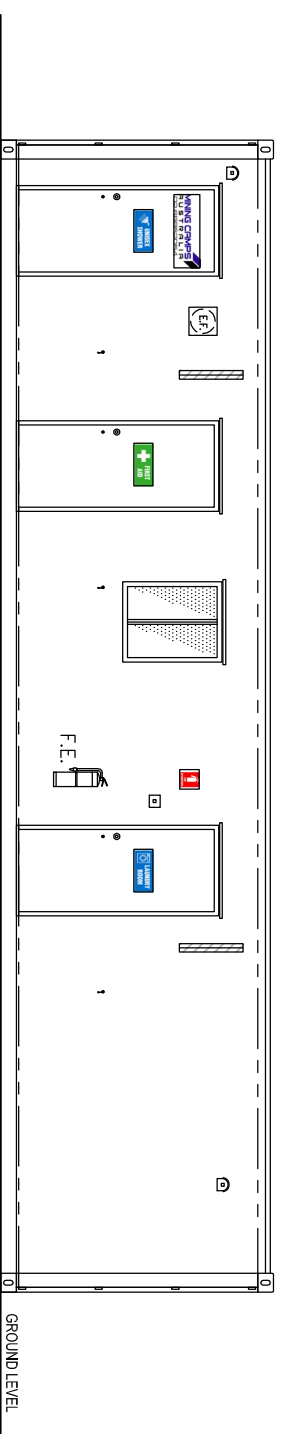


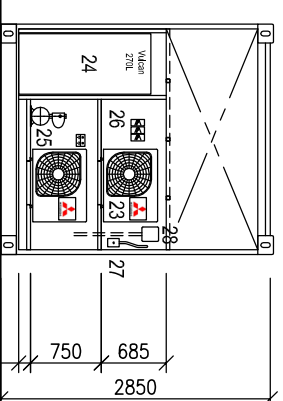
ELEVATION 3



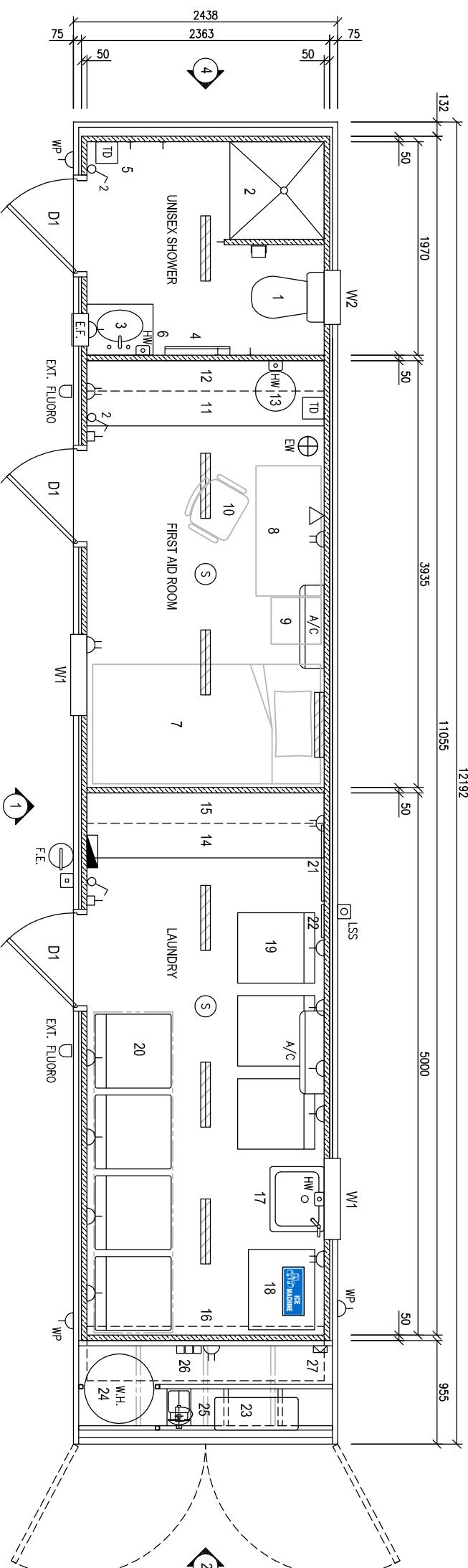
ELEVATION 4



ELEVATION 1



ELEVATION 2



PLAN LAYOUT
LAUNDRY-FIRST AID-UNISEX SHOWER BUILDING

ITEM	DESCRIPTION	QTY
W1	950H x 750W SLIDING WINDOW - CW/ E.V. SCREENS	2
W2	400H x 500W SLIDING WINDOW - CW/ E.V. SCREENS	1
D1	2040H x 870W METAL CLAD REBATE EDGE EXT. DOOR	3
1	TOILET SUITE	1
2	610 x 470 VANITY UNIT - WITH SPLASH BACK & MIRROR	1
3	900 x 870 STAINLESS SHOWER BASE CW CURTAIN	1
4	TOWEL HANGER - 600 LONG	1
5	TOWEL DISPENSER (TD)	2
6	HAND WASH DISPENSER (HW)	3
7	KING SINGLE BED - WITH INNER SPRING MATTRESS	3
8	1200 x 600 OFFICE DESK	1
9	2 DRAW FILING CABINET - 465 x 430	1
10	OFFICE CHAIR - MOVABLE WHEELED	1
11	6000 x 900H BENCH TOP FULL LENGTH CW CUPBDS UNDER	1
12	OVERHEAD CUPBOARDS x 300 DEEP x 4 LOCKABLE	1
13	STAINLESS WASH BASIN - 0370	1
14	6000 x 900H BENCH TOP FULL LENGTH CW CUPBDS UNDER	1
15	OVERHEAD CUPBOARDS x 300 DEEP x 4	1
16	OVERHEAD CUPBOARDS x 600 DEEP x 4	1
17	WASH TUB	1
18	ICE MACHINE	1
19	CLOTHES WASHING MACHINE	3
20	CLOTHES DRYER	4
21	NOTICE BOARD	1
22	LOOKOUT LOCKS WALL RACK	1
23	AIR CONDITIONER INVERTER - MITSUBISHI	3
24	WATER HEATER - 270L VULCAN - 661290	1
25	WATER PUMP - 'DAVEY' - HP85-08T-2	1
26	POWER ON-OFF SWITCH	3
27	DATA POINT - SINGLE	1
28	TRIPAC ELECTRICAL KNOCK-OUT BOX	1
1	SINGLE LIGHT SWITCH	1
3	2 x MULTILIGHT SWITCH	3
1	SINGLE LIGHT SWITCH - EXTERNAL	1
1	HP/L LIGHT SENSITIVE SWITCH - EXTERNAL	1
9	SINGLE GP0	9
6	DOUBLE GP0	6
3	15A WEATHER PROOF GP0	3
1	DATA POINT	1
6	1 x 38W FLUORO DIFFUSED - BATT BACK - CEILING	6
1	1 x 38W FLUORO DIFFUSED - BATT BACK - BED LIGHT	1
2	1 x 38W FLUORO DIFFUSED - BATT BACK - EXT. LIGHT	2
2	HARD WIRED 24V SMOKE DETECTOR	2
1	FIRE EXTINGUISHER - 4.5KG POWDER	1
2	AIR CONDITIONER - HAND CONTROLLER	2
2	AIR CONDITIONER - SPLIT SYSTEM REVERSE CYCLE	2
1	WALL EXHAUST FAN	1
1	CIRCUIT BREAKER BOARD	1

Legend:
50mm THICK INSULATED WALL PANEL

MINING CAMPS AUSTRALIA
RUSTRALIA
02 68852054

R.S.	18.02.14	ISSUE FOR USE	C
R.S.	04.12.13	CLIENTS COMMENTS INCORPORATED	B
R.S.	29.11.13	ISSUE TO CLIENT	A
APPD. DATE		DETAILS	ISS.
DATE:	29-11-13	APPROVED: RS	
DRAWN: P.G.		CHECKED: RS	
SCALE:	1=25 (A1); 1=50 (A3) U.N.O.		

STAFFORD ADAMSON
PROJECT MANAGERS & CONSULTING ENGINEERS
PO BOX 7120
TOOWOOMBA SOUTH
QLD 4352
Phone: (07) 4639 6600 Fax: (07) 4639 6300
Email: staffadam@staffadam.com.au

PROJECT:	MINING CAMPS AUSTRALIA - TRANSFIELD-1 CAMP
TITLE:	LAUNDRY-FIRST AID-UNISEX SHOWER FLOOR PLAN & ELEVATIONS
DRAWING No.	C0136-MCA-20-01
REVISION	C