

B G

46.88m Feadship 1990 (2015)



CECIL WRIGHT

B G

BUILDER: FEADSHIP

YEAR BUILT: 1990 (2015)

LOA: 46.88M

PRICE: \$16,000,000

[CLICK HERE TO VIEW VIRTUAL TOUR](#)

[CLICK HERE TO VIEW VIDEO](#)



Main Salon





Main Salon / Dining



Sky Lounge



Master Stateroom



Master Stateroom Bathroom



Guest Cabin & Bathroom



Guest Cabin & Bathroom



Guest Cabin & Bathroom



Guest Cabins & Bathroom



Bridge



Exterior Decks





Exterior Decks





Exterior Decks



Exterior Profile





Exterior Profile





Exterior Profile

Specifications

Construction

STEEL HULL, ALUMINIUM SUPERSTRUCTURE, TEAK LAID DECKS

Main Specification

GENERAL

NAME:	BG
BUILDER:	FEADSHIP – DEVRIES
YEAR BUILT (& REFIT YEARS):	1990 (2015)
TYPE:	FULL DISPLACEMENT, TWIN SCREW DIESEL MOTOR YACHT
CLASSIFICATION:	LLOYDS REGISTER ✕ 100A1 SSC YACHT MONO G6, LMC, MCA LY2 COMPLIANT
FLAG:	MARSHALL ISLANDS
DESIGNER:	FEADSHIP DEVOOGT
NAVAL ARCHITECT:	DE VOOGT
INTERIOR DESIGNER:	MCMILLAN DESIGN / DEE DEE TAYLOR EUSTACE
HULL & SUPERSTRUCTURE:	OYSTER WHITE
BOOTSTRIPE:	JET BLACK

CAPACITIES

ECONOMICAL SPEED:	11.0 KTS (25 US GALLONS PER HOUR)
CRUISING SPEED:	12.5 KTS (40 US GALLONS PER HOUR)
MAXIMUM SPEED:	15.0 KTS (91 US GALLONS PER HOUR)
RANGE:	5,500NM @ 10.0 KTS ECONOMICAL SPEED 4,600NM @ 12.5 KTS CRUISING SPEED 3,000NM @ 15.0 KTS TOP SEED
FUEL CAPACITY:	69,800 LITRES (APPROX.18,440 US GALLONS)
FRESH WATER CAPACITY:	19,100 LITRES (APPROX. 5,045 US GALLONS)
BLACK WATER CAPACITY:	1,133 LITRES (APPROX. 300 US GALLONS)
GREY WATER CAPACITY:	1,703 LITRES (APPROX. 450 US GALLONS)
LUBE OIL CAPACITY:	2,176 LITRES (APPROX. 575 US GALLONS)
DIRTY LUBE OIL:	1,133 LITRES (APPROX. 300 US GALLONS)
FUEL CONSUMPTION:	109 LITRES PER HOUR @ 11.0 KTS ECONOMICAL SPEED 143 LITRES PER HOUR @ 12.0 KTS CRUISING SPEED 253 LITRES PER HOUR @ 14.0 KTS TOP SPEED

Specifications

DIMENSIONS

LENGTH O. A: 46.88M / 153' 10"

LENGTH W. L: 41.60M / 136' 5"

BEAM: 8.50M / 27' 88"

DRAFT: HALF LOAD: 2.60M / 8' .6"

FULL LOAD: 2.90M / 9' .6"

GROSS TONNAGE: 515 GT

NET TONNAGE: 154 NT

DISPLACEMENT: 375 MT

SLEEPING

GUESTS: 12 GUESTS IN 6 CABINS

CREW: 10 IN 6 CABINS

Machinery

GENERAL

ENGINES: CATERPILLAR

ENGINE MODEL: 2 X CATERPILLAR 3508DI-TA 905HP

ENGINE HOURS: PORT M/E SERIAL #: 96Y00972. TOTAL RUN TIME: 29,900 HRS.

STBD M/E SERIAL #: 96Y00973. TOTAL RUN TIME: 29,898 HRS.

FUEL: DIESEL

GEARBOXES: 2 X REINTJES WAF 540 P

STEERING: TILLER

RUDDERANGLE INDICATORS: ROBERTSON RI45

STABILISERS: QUANTUM CONTROL ACR 3001 MK2 (ZERO SPEED)

PROPELLERS: 2 X 5-BLADE NIBRAL 60"

SHAFTS: 2 X

Specifications

GENERATORS	
MAIN GENERATOR:	KOHLER. MODEL # 80EOZDJ. 80KW. 208V, 3PH, 60HZ, POWER FACTOR 0.8. PORT GEN, KOHLER SERIAL #: 33J9GMHL0002. TOTAL RUN TIME: 3467 HRS. STBD GEN KOHLER SERIAL #: 33J9GMHL0001: TOTAL RUN TIME: 2865 HRS. NEW PORT & STARBOARD GENERATORS INSTALLED MAY 2021
EMERGENCY GENERATOR:	NONE
BATTERIES	
ELECTRICITY:	110
SHORE POWER:	ATLAS
BATTERIES:	DC210-12 DEEP CYCLE SERIES X 14
AIR CONDITIONING	
MAKE:	SCHNEIDER: NEW CUGE MARINE WATER-COOLED AIR-CONDITIONING CHILLER / HEATER UNIT INSTALLED IN 2020. COOLING CAPACITY: 93.4 KW @ 60 HZ X 2. TOTAL HEAT REJECTION: 117.3 KW @100%.

OTHER MACHINERY	
WATER MAKERS:	2 X HEAD HUNTER HOURLY FLOW RATE: 880 LT/H. DAILY FLOW RATE: 21120 LT/H.
BOW THRUSTER:	HOLLAND ROERPROPELLER / JOHAN DANE P-60-500 55KW / 75 HP
OILY WATER SEPARATOR:	RWO VEOLIA
FUEL OIL SEPARATOR:	LEESON
BOILERS:	ACV SMART 210
SEWAGE TREATMENT:	HEADHUNTER MMX
WC'S:	EVAC FRESH WATER
WATER SOFTENER:	2 X SPOT ZERO 8 GPM (NEW 2022)
FIRE / BILGE PUMP:	1 X KUYL AND ROTTINGHIS DESMI, 1 X HOYKEN EMERGENCY EMERGENCY FIRE PUMP

Specifications

Accommodation

CONFIGURATION

OWNER

1 x Owner’s stateroom with ensuite bathroom with bath and separate shower, 1 sink, 1 toilet

GUEST

- 1 x VIP cabin with ensuite shower room
- 2 x Double cabins with ensuite shower room
- 2 x Convertible twin cabins

CREW

- 1 x Double Captain’s cabin with ensuite shower room
- 1 x Double Engineer’s cabin with ensuite shower room
- 4 x Twin upper and lower berth cabins with ensuite shower room

GUEST ACCOMMODATION

All guest cabins are equipped with a comfortable double bed, adorned with plush linens and pillows that will make you feel right at home. There is also a TV, perfect for catching up on your favourite shows or movies. The en-suite bathroom is modern and elegant, with high-end finishes and luxurious amenities to ensure your comfort and convenience. Whether you're traveling with friends or family, the guest cabins on board BG are the ideal place to retreat to after a day of exploring the open seas.

OWNER'S SUITE

The full beam windows on either side offer breath taking panoramic views of the surrounding oceans, providing a serene and magical experience. The cabin boasts a sleek white colour scheme, which

creates a sense of calm and sophistication. The king-sized bed is the centrepiece of the room, featuring a plush mattress and fluffy pillows that will ensure a peaceful night's sleep. The cabin is also equipped with an en-suite bathroom that has a modern and elegant design, complete with a spacious shower and luxurious amenities. Overall, this master cabin offers the perfect combination of comfort and style, making it the ultimate retreat for any discerning yacht enthusiast.

GUEST AREAS

The interior of the salon is designed with a perfect blend of high-end finishes and a coastal aesthetic. The furniture, accessories, and details are carefully selected to create an ambiance of understated elegance. The light and airy colour palette provides a fresh and relaxing atmosphere, with the perfect balance of warmth and sophistication that is characteristic of a Hampton beach house.

The focal point of the salon is a large sofa, perfect for lounging and socializing with your guests, while enjoying the stunning views of the surrounding seascape through the expansive windows. The interior is bathed in natural light, creating a beautiful and serene atmosphere.

For your entertainment, there is a state-of-the-art TV in the salon that provides a cinematic experience, perfect for movie nights or catching up on the latest news. Overall, the main salon provides a luxurious and comfortable retreat for you and your guests, where you can relax and enjoy life on the water in style.

CREW AREAS

The captain's cabin is located on the bridge deck. All the remaining crew cabins are located on the lower deck

SHIP'S SAFE

Guest safe in Owner's Suite

Specifications

Communications & Navigation Equipment

COMMUNICATIONS EQUIPMENT

VSAT:	1 X KVH V7
VHF:	1 X FURUNO FM-8900S 1 X ICOM IC M604
SSB RADIO TELEPHONE:	DOES NOT WORK
INTERCOM SYSTEM:	DO NOT HAVE
UHF COMMUNICATION:	HAVE ICOM ICM88 VHF X 13 RADIOS. WE DO NOT HAVE UHF CREW RADIOS.

NAVIGATION EQUIPMENT

GYRO COMPASS:	1 X SPERRY NAVIGAT 100
MAGNETIC COMPASS:	1 X OBSERVER MK3
AUTOPILOT:	1 X ROBERTSON AP9 MKII
BNWAS:	1 X FURUNO BR 510
GPS LOG:	1 X GPS LOG
ECHO SOUNDER:	1 X FURUNO FCV 295
RADAR:	1 X FURUNO FAR 21X
CHART PLOTTER:	1 X SIMRAD MARIS 900
GPS:	1 X FURUNO GP 150 1 X SIMRAD MX 610
NAVTEX:	1 X FURUNO NX-700
AIS:	1 X FURUNO FA 170

Deck Equipment

ANCHOR WINDLASS:	2 X STEEN TYPE 19
CAPSTANS:	2 X STEEN TYPE 59 SIZE 48 VERTICAL CAPSTANS
ANCHORS:	2 X POOL N 380 KG
ANCHOR CHAIN:	4 X SHACKLES PORT 3 X SHACKLES STARBOARD LENGTH (1 SHACKLE = 27.5M)
GROUND TACKLE:	2 X 15 M, 2 X 20 M, 2 X 25 M MOORING LINES, 1 X 30 M TOW BRIDLE
BOAT & CRANE DAVITS:	1 X MARQUIPT AC SEACRANE, SWL 1,900 KG, WITH 2 X ½" 7 X 19 STAINLESS CABLE
PASSERELLE:	AKERBOOM WITH SWL 200 KG, LENGTH 3M
BOARDING LADDER:	1 X BLOCK AND TACKLE RIGGED SIDE BOARDING STAGE 1 X MARQUIPT TIDE RIDER
SWIM PLATFORM:	TEAK
SEARCHLIGHT:	CARLISLE & FINCH
AWNING:	1 X GREY WHOLE BDA, 1 X GREY BOW (NO MAKE MARKED)
JACUZZI DIP POOL:	1 X ARTISINAL SPA ISLAND JACUZZI
SHIP'S BELL:	1 X POLISHED STAINLESS-STEEL SHIP'S BELL OF 350 MM

Specifications

Tenders & Watersports Equipment

TENDERS

- 1 X 9.93M / 32' INTREPID 327 OPEN TENDER (2015) WITH 2 X MERCURY VERDANO 350 OUTBOARD
- 1 X 6.10M / 20' SILVER MARINE PHOENIX 610 (2020) NO RESCUE TENDER (EXEMPTION CERTIFICATE)

WATERSPORTS

- 2 X YAMAHA WAVE RUNNER VX 100-CP
- 2 X IAQUA ION+ SEABOBS
- 2 X IAQUA NEO+ SEABOBS
- 2 X WATERSKIS
- 2 X INFLATABLE ITIWIT 2/3 PERSON KAYAKS
- 2 X EFOILS - LYFT BOARDS
- 10 X AQUABANAS

DIVING

- 6 X SETS OF DIVING EQUIPMENT
- 6 X DIVE TANKS
- DIVE COMPRESSOR FLORIDA DIVERS
- 1 X INFLATABLE SLIDE
- 1 X INFLATABLE CLIMBING WALL

Entertainment & It Equipment

GENERAL

- VSAT STARLINK
- WIFI THROUGHOUT
- HELIOS MUSIC SERVER
- PLEX VIDEO SERVER
- 2 X APPLE IPADS

OWNER'S STATEROOM

- 1 X 145 LG TV
- 1 X APPLE TV

VIP CABIN

- 1 X 115 LG TV
- 1 X APPLE TV

ALL GUEST CABINS

- 1 X 125 LG TV
- 1 X APPLE TV

MAIN DECK LOUNGE

- 1 X 170CM LG TV

BRIDGE DECK SALON

- 1 X 190CM LG TV

MAIN DECK AFT

- SURROUND SYSTEM

SUNDECK & BRIDGE DECK AFT

- SURROUND SYSTEM

Specifications

CREW MESS
1 X 125 TV LG

SHIP'S COMPUTERS
2 X WINDOW PCS LG
PRINTERS / SCANNERS
1 X A4 EPSON L565

Galley & Laundry

MAIN GALLEY
1 X 1M2 TRUE MANUFACTURING COMPANY FRIDGE
1 X VULCAN OVEN
1 X SHARP CAROUSEL MICROWAVE
1 X 2M2 TRUE MANUFACTURING COMPANY FREEZER
1 X SCHOTT CERAN INDUCTION HOB (4 RING)
1 X MIELE DISHWASHER

MAIN DECK PANTRY
1 X PHILLIPS JUICER
1 X U-LINE WINE FRIDGE
1 X TEFAL BLENDER

BRIDGE DECK PANTRY
1 X BOSCH SILENCE DISHWASHER

1 X NESPRESSO CREATISE COFFEE MACHINE
1 X TEFAL KETTLE
1 X PANASONIC MICROWAVE
1 X TEFAL BLENDER
1 X U-LINE WINE FRIDGE

LAUNDRY
2 X MIELE PW 6065 WASHING MACHINES
2 X MIELE PT 7138 PLUS TUMBLE DRYERS
1 X MIELE ELECTRONIC B865 ROLLER IRON
1 X TEFAL STEAM IRON

CREW MESS
1 X SUMMIT FF29K DRINKS FRIDGE
1 X SANDEN DOUBLE FRIDGE
1 X NESPRESSP CREATISA COFFEE MACHINE
1 X BOSCH SILENCE DISHWASHER
1 X HOSHIZAKI ICE MACHINE
1 X TEFAL X FORCE FLEX VACUUM
1 X CUISINART TOASTIE MACHINE
1 X NUTRI BULLET
1 X OSTER TSSTTRWF4S TOASTER
1 X CUISINART KETTLE
1 X NESPRESSO 3694 MILK FROTHER

Specifications

Safety & Security Equipment

SAFETY

- 2 X ZODIAC MK IV TO 25 PERSONS LIFERAFT
 - 30 X STEARNS ADULT LIFE JACKETS
 - 18 X STEARNS 1590 UNIVERSAL IMMERSION SUITS
 - 3 X STEARNS 1890 CHILD IMMERSION SUITS
 - 2 X SART JOTRON
 - 8 X LIFTERING'S
 - 2 X GRAB BAGS (BOTH ON BRIDGE DECK)
 - 1 X ZODIAC TO 8 PERSONS LIFERAFT
 - 6 X CHILD LIFE JACKETS
 - 2 X STEARNS 1590 XL IMMERSION SUITS
 - 2 X IMPERIAL 1409 XL IMMERSION SUITS
 - 2 X EPIRB GME
 - 5 X EEBD (OCEANCO-M20)
 - 4 X PAINS WESSEX LINE THROWER 250
- FIRE FIGHTING
- INTERIOR: HAYLON, DRY POWER, FM200
- 1 X KUYL AND ROTTINGHUIS DESMI SA-35-135/12 10HP FIXED FIRE PUMP
 - 1 X HONMAR DH1250-50E FIXED EMERGENCY PUMP
 - 29 X FIRE EXTINGUISHERS, BROKEN DOWN AS:
 - 24 X 2KG POWDER

- 6 X 6KG POWDER
 - 1 X 9KG POWDER
 - 1 X 6L WET CHEMICAL
 - 3 X 9L AFFF
 - 4 X 5KG CO2
 - 1 X 7HG HALON
 - 3 X 1KG POWDER
 - 4 X FIRE BLANKETS
 - 2 X FULL SETS OF BA
 - 2 X SCOTT FIRE FIGHTING SUITS
 - 5 X FIRE HOSES (4 X 20 M, 1 X 10 M) AND JET NOZZLE ATTACHMENTS
- MEDICAL
- 1 X FULL MSOS CAT B MEDIAL KIT + TELEDOC
 - 4 X EYEWASH STATIONS
 - 1 X STRETCHER
 - 1 X DEFIBRILLATOR (ON BRIDGE)
- ALARMS
- 1 X RH MARINA RHODIUM AMCS 2021
- SECURITY
- 6 X HIK VISION CAMERAS
- AIS

Specifications

Comments

REFIT WORK YEARS

COMPLETE INTERIOR REFIT IN 2015

EXTENSIVE ENGINEERING WORKS COMPLETED 2021 INCLUDING 2 X NEW GENERATORS

NEW SIMRAD ECDIS – 2020

NEW SPERRY GYRO COMPASS - 2023

PAINTED SUPER STRUCTURE & HULL - 2015

ASSORTED CUSHION COVERS REPLACED - 2020

GENERATORS MEGGER TESTED - 2023

WATER TANKS TESTED - 2023

MAIN ENGINE: 18,000 HOURS SERVICE INTERVALS FOR A CATERPILLAR 3508. CATERPILLAR RECOMMENDS AN OVERHAUL EVERY 18,000 HOURS OR 515,000-GAL FUEL USED.

PT M/E: REBUILT AT 25213 HOURS -

NEXT REBUILD DUE PT M/E: 43,213 HOURS

STBD M/E REBUILT AT 25191 HOURS -

NEXT REBUILD DUE STBD M/E: 43,191 HOURS

ANTIFOULING COMPLETED IN SINGAPORE - 2023

NEW AKERBOOM SHAFT SEALS SINGAPORE - 2023

LLOYDS CLASS 30-YEAR SURVEY COMPLETED 2020 (NEXT DUE 2025)

Exclusions

ART

1 X SLIM AARONS: HOTEL DU CAP RIVA BOATS (MAIN SALON)

1 X SLIM AARONS: PALM BEACH POOL (MAIN SALON)

1X DAVID BURDENY: GALLERIE DE BELLEFEUILLE (MAIN SALON)

1 X NICHOLAS RUEL: ‘MONA’ GALLERIE DE BELLEFEUILLE (VIP CABIN)

1 X JOSHUA JENSEN–NAGLE: ‘SIMPLE EXPRESSION’ GALLERIE DE BELLEFEUILLE (MASTER CABIN)

1 X JOSHUA JENSEN–NAGLE: ‘SEEING THE SEDUCTION’ GALLERIE DE BELLEFEUILLE (MASTER CABIN)

1 X SLIM AARONS: ‘POOL SIDE GOSSIP’ (GUEST CABIN)

1 X SLIM AARONS: ‘POOL SIDE IN SOTOGRANDE’ (GUEST CABIN)

1 X SLIM AARONS: ‘DECK DWELLERS’ (GUEST CABIN 4)

1 X SLIM AARONS: ‘TRANSPORT BUFFS’ (GUEST CABIN 4)

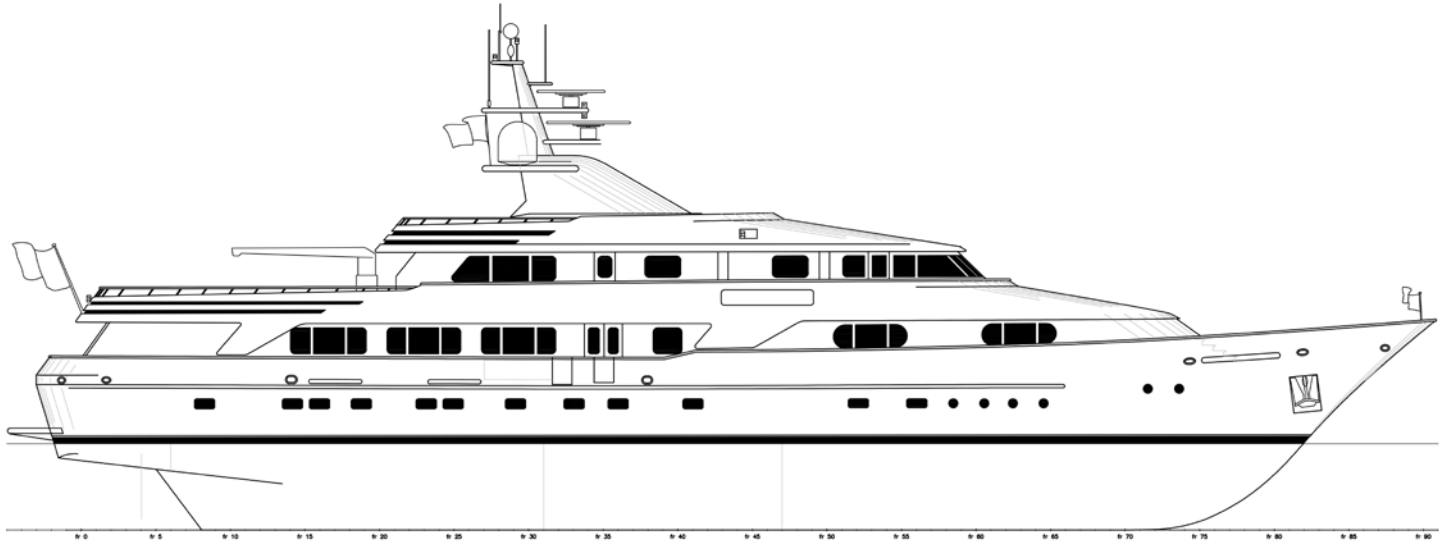
TABLEWARE

1 X LARGE WOODEN BOWL (PURCHASED IN INDONESIA)

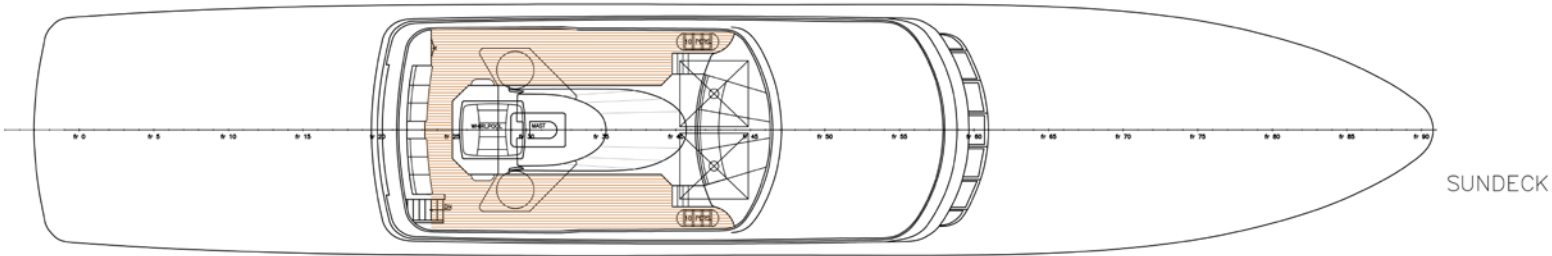
1 X GLASS BOWL (PURCHASED IN VENICE)

ALL CUTLERY, ALL CHINA & ALL GLASSWARE

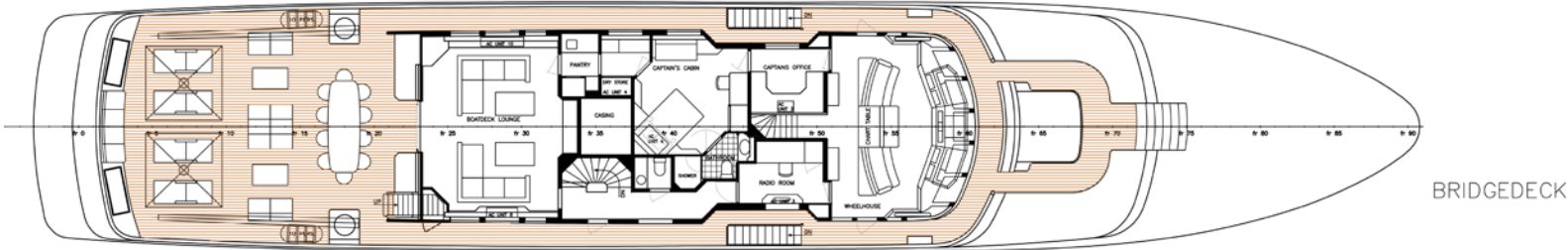
Specifications



Specifications



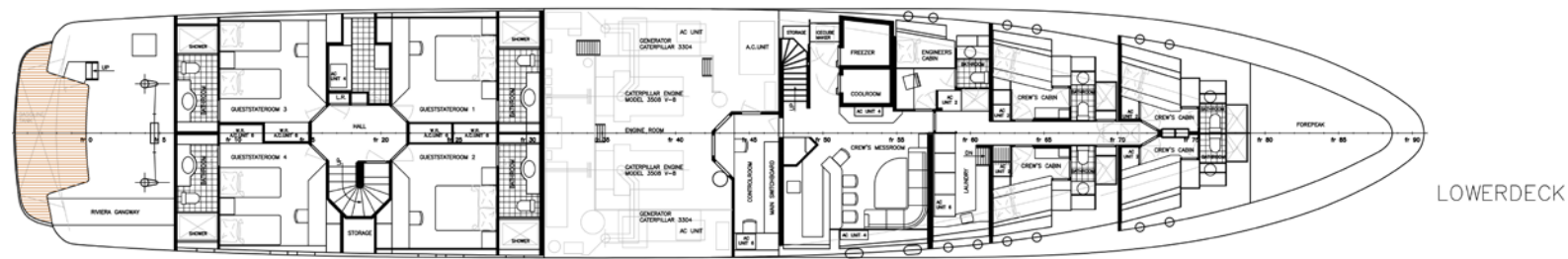
Specifications



Specifications



Specifications



CECIL WRIGHT

LONDON

73 St James's Street
London
SW1A 1PH
Tel: +44 20 7408 1001

MONACO

Le Beau Rivage
9 avenue d'Ostende
MC 98000 Monaco
Tel: +377 97 98 76 60

JERSEY

The Coach House
Waldegrave
Jersey JE3 8BA
Tel: +44 20 7408 1001