



THE BEMROSE SCHOOL

ALLEGATIONS OF ABUSE AGAINST STAFF POLICY

MANAGER: N WILKINSON

ADOPTED: MARCH 2025

REVIEW: 12 MONTHS

1. Aims

The school aims to ensure that:

- Appropriate action is taken in a timely manner to safeguard and promote children's welfare.
- All staff are aware of their statutory responsibilities with respect to safeguarding.
- Staff are properly training in recognising and reporting safeguarding issues.

It is essential that any allegation of abuse made against a teacher or other member of staff or volunteer in school is dealt with fairly, quickly, and consistently, in a way that provides effective protection for the child and at the same time supports the person who is the subject of the allegation.

This guidance is about managing cases of allegations that might indicate that a person is unsuitable to continue to work with children in their present position, or in any capacity. It should be used in respect of all cases in which it is alleged that a teacher or member of staff has:

- behaved in a way that has harmed a child or may have harmed a child.
- possibly committed a criminal offence against or related to a child; or
- behaved towards a child or children in a way that indicates s/he is unsuitable to work with children.
- behaved or may have behaved in a way that indicates they may not be suitable to work with children – this includes behaviour taking place both inside and outside of school.

If we are in any doubt as to whether a concern meets the harm threshold, we will consult our local authority designated officer (LADO). We will deal with any allegation of abuse quickly, in a fair and consistent way that provides effective child protection while also supporting the individual who is the subject of the allegation.

There may be up to 3 strands in the consideration of an allegation:

- a police investigation of a possible criminal offence.
- enquiries and assessment by children's social care about whether a child is in need of protection or in need of services.
- consideration by the school of disciplinary action in respect of the individual

2. Legislation and statutory guidance

This policy is based on the Department for Education's (DfE's) statutory guidance [Keeping Children Safe in Education \(2024\)](#) and [Working Together to Safeguard Children \(2023\)](#), the [Maintained Schools Governance Guide](#) and [Academy Trust Governance Guide](#). We comply with this guidance and the arrangements agreed and published by our 3 local safeguarding partners (see section 3).

This policy is also based on the following legislation:

- Section 175 of the [Education Act 2002](#), which places a duty on schools and local authorities to safeguard and promote the welfare of pupils
- [The School Staffing \(England\) Regulations 2009](#), which set out what must be recorded on the single central record and the requirement for at least 1 person conducting an interview to be trained in safer recruitment techniques
- [The Children Act 1989](#) (and [2004 amendment](#)), which provides a framework for the care and protection of children
- Section 5B(11) of the Female Genital Mutilation Act 2003, as inserted by section 74 of the [Serious Crime Act 2015](#), which places a statutory duty on teachers to report to the police where they discover that female genital mutilation (FGM) appears to have been carried out on a girl under 18
- [Statutory guidance on FGM](#), which sets out responsibilities with regards to safeguarding and supporting girls affected by FGM
- [The Rehabilitation of Offenders Act 1974](#), which outlines when people with criminal convictions can work with children
- Schedule 4 of the [Safeguarding Vulnerable Groups Act 2006](#), which defines what 'regulated activity' is in relation to children
- [Statutory guidance on the Prevent duty](#), which explains schools' duties under the Counter-Terrorism and Security Act 2015 with respect to protecting people from the risk of radicalisation and extremism
- [The Human Rights Act 1998](#), which explains that being subjected to harassment, violence and/or abuse, including that of a sexual nature, may breach any or all of the rights which apply to individuals under the [European Convention on Human Rights](#) (ECHR)

- [The Equality Act 2010](#), which makes it unlawful to discriminate against people regarding particular protected characteristics (including disability, sex, sexual orientation, gender reassignment and race). This means our governors and Executive Headteacher should carefully consider how they are supporting their pupils with regard to these characteristics. The Act allows our school to take positive action to deal with particular disadvantages affecting pupils (where we can show it's proportionate). This includes making reasonable adjustments for disabled pupils. For example, it could include taking positive action to support girls where there's evidence that they're being disproportionately subjected to sexual violence or harassment
- [The Public Sector Equality Duty \(PSED\)](#), which explains that we must have due regard to eliminating unlawful discrimination, harassment and victimisation. The PSED helps us to focus on key issues of concern and how to improve pupil outcomes. Some pupils may be more at risk of harm from issues such as sexual violence; homophobic, biphobic or transphobic bullying; or racial discrimination
- The [Childcare \(Disqualification\) and Childcare \(Early Years Provision Free of Charge\) \(Extended Entitlement\) \(Amendment\) Regulations 2018](#) (referred to in this policy as the "2018 Childcare Disqualification Regulations") and [Childcare Act 2006](#), which set out who is disqualified from working with children

Some cases will also need to be reported to DfE for consideration including List 99 (the register of persons who are barred from working with children by the Department of Education (DfE)), or about possible sanctions against an individual.

3. Principles

- We will support all those involved including informing them of the allegation, progress, and outcome of the case or disciplinary hearing be that to the parent or carer of the child or the person subject to the allegation themselves.
- We will ensure all the necessary support mechanisms are used including specialist services, social services or professional bodies support all those concerned including the child, parent or carer and the staff member.
- Every effort should be made to maintain confidentiality and guard against unwanted publicity while an allegation is being considered.
- We will not use compromise agreements to avoid the required disciplinary action or our statutory duty to report such allegations and neither will we fail to investigate even if the individual chooses to resign.
- Records will be kept in order to provide a clear and comprehensive summary of the allegations made, investigations and actions or decisions reached. Such records will be kept for 10 years from the allegation or normal retirement age, whichever is the longer
- Cases will be resolved as quickly as possible consistent with a fair and thorough investigation and avoiding unnecessary delay.

- Both the Local Authority and the Police Force will identify key individuals to provide advice and liaison as well as assisting in the monitoring of progress

4. Equality statement

Some children have an increased risk of abuse, and additional barriers can exist for some children with respect to recognising or disclosing it. We are committed to anti-discriminatory practice and recognise children's diverse circumstances. We ensure that all children have the same protection, regardless of any barriers they may face.

We give special consideration to children who:

- Have special educational needs (SEN) or disabilities.
- Are young carers.
- May experience discrimination due to their race, ethnicity, religion, gender identification or sexuality
- Have English as an additional language.
- Are known to be living in difficult situations – for example, temporary accommodation or where there are issues such as substance abuse or domestic violence.
- Are at risk of FGM, sexual exploitation, forced marriage, or radicalisation.
- Are asylum seekers?
- Are at risk due to either their own or a family member's mental health needs.
- Are looked after or previously looked after.

5. Roles and responsibilities

Safeguarding and child protection is **everyone's** responsibility. This policy applies to all staff, volunteers and governors in the school and is consistent with the procedures of the 3 safeguarding partners. Our policy and procedures also apply to extended school and off-site activities.

The school plays a crucial role in preventative education. This is in the context of a whole-school approach to preparing pupils for life in modern Britain, and a culture of zero tolerance of sexism, misogyny/misandry, homophobia, biphobia, transphobia and sexual violence/harassment. This will be underpinned by our:

- Behaviour policy
- Pastoral support system
- Planned programme of relationships, sex and health education (RSHE), which is inclusive and delivered regularly, tackling issues such as:
 - Healthy and respectful relationships
 - Boundaries and consent
 - Stereotyping, prejudice and equality
 - Body confidence and self-esteem

- How to recognise an abusive relationship (including coercive and controlling behaviour)
- The concepts of, and laws relating to, sexual consent, sexual exploitation, abuse, grooming, coercion, harassment, rape, domestic abuse, so-called honour-based violence such as forced marriage and FGM and how to access support
- What constitutes sexual harassment and sexual violence and why they're always unacceptable

5.1 All staff

All staff will read and understand part 1 and Annex A of the Department for Education's statutory safeguarding guidance, [Keeping Children Safe in Education \(2024\)](#) and review this guidance at least annually.

All staff will be aware of:

- Our systems which support safeguarding, including this child protection and safeguarding policy, the staff code of conduct, the role and identity of the designated safeguarding lead (DSL) and deputies, the behaviour policy, and the safeguarding response to children who go missing from education.
- The early help process (sometimes known as the common assessment framework) and their role in it, including identifying emerging problems, liaising with the DSL, and sharing information with other professionals to support early identification and assessment.
- The process for making referrals to local authority children's social care and for statutory assessments that may follow a referral, including the role they might be expected to play.
- What to do if they identify a safeguarding issue or a child tells them they are being abused or neglected, including specific issues such as FGM, and how to maintain an appropriate level of confidentiality while liaising with relevant professionals
- The signs of different types of abuse and neglect, as well as specific safeguarding issues, such as child sexual exploitation (CSE), Children at Risk of Exploitation (CRE) indicators of being at risk from or involved with serious violent crime, FGM and radicalisation.

5.2 The Designated Safeguarding Lead (DSL)

The DSL is a member of the Leadership Team. Our DSL is Rebecca Broderick. The DSL takes lead responsibility for child protection and wider safeguarding. During term time, the DSL will be available during school hours for staff to discuss any safeguarding concerns.

safeguarding@bemrose.derby.sch.uk

When the DSL is absent, the deputies – Louise Attew and Karen Lamb – will act as cover.

If the DSL and deputies are not available, the Executive Headteacher or Head of School will act as cover (for example, during out-of-hours/out-of-term activities).

The DSL will be given the time, funding, training, resources, and support to:

- Provide advice and support to other staff on child welfare and child protection matters.
- Take part in strategy discussions and inter-agency meetings and/or support other staff to do so.
- Contribute to the assessment of children.
- Refer suspected cases, as appropriate, to the relevant body (local authority children's social care, Channel programme, Disclosure and Barring Service, and/or police), and support staff who make such referrals directly.

The DSL will also keep the Executive Headteacher informed of any issues and liaise with local authority case managers and designated officers for child protection concerns as appropriate. The full responsibilities of the DSL and deputies are set out in their job description.

5.3 The Governing Body

The Governing Body will approve this policy at each review, ensure it complies with the law and hold the headteacher to account for its implementation. The Governing board will appoint a link governor to monitor the effectiveness of this policy [Ollie Shearer] in conjunction with the full governing board. This is always a different person from the DSL.

The Chair of Governors will act as the 'case manager' in the event that an allegation of abuse is made against the Executive Headteacher.

All governors will read Keeping Children Safe in Education.

5.4 The Executive Headteacher

The Executive Headteacher is responsible for the implementation of this policy, including:

- Ensuring that staff (including temporary staff) and volunteers are informed of our systems which support safeguarding, including this policy, as part of their induction
- Communicating this policy to parents when their child joins the school and via the school website.
- Ensuring that the DSL has appropriate time, funding, training, and resources, and that there is always adequate cover if the DSL is absent.

- Ensuring that all staff undertake appropriate safeguarding and child protection training and update this regularly.
- Acting as the 'case manager' in the event of an allegation of abuse made against another member of staff or volunteer, where appropriate
- Ensuring the relevant staffing ratios are met, where applicable

Making sure each child in the Early Years Foundation Stage is assigned a key person.

6. Allegations that may meet the harms threshold

This section applies to all cases in which it is alleged that a current member of staff, including a supply teacher, volunteer, or contractor, has:

- Behaved in a way that has harmed a child, or may have harmed a child, and/or
- Possibly committed a criminal offence against or related to a child, and/or
- Behaved towards a child or children in a way that indicates he or she may pose a risk of harm to children, and/or
- Behaved or may have behaved in a way that indicates they may not be suitable to work with children – this includes behaviour taking place both inside and outside of school.

We will deal with any allegation of abuse quickly, in a fair and consistent way that provides effective child protection while also supporting the individual who is the subject of the allegation.

A 'case manager' will lead any investigation. This will be the Executive Headteacher, Head of School or the chair of governors where the Executive Headteacher is the subject of the allegation. The case manager will be identified at the earliest opportunity.

Our procedures for dealing with allegations will be applied with common sense and judgement.

If we receive an allegation of an incident happening while an individual or organisation was using the school premises to run activities for children, we will follow our safeguarding policies and procedures and inform our LADO.

6.1 Suspension of the accused until the case is resolved.

Suspension of the accused will not be the default position and will only be considered in cases where there is reason to suspect that a child or other children is/are at risk of harm, or the case is so serious that there might be grounds for dismissal. In such cases, we will only suspend an individual if we have considered all other options available and there is no reasonable alternative.

Based on an assessment of risk, we will consider alternatives such as:

- Redeployment within the school so that the individual does not have direct contact with the child or children concerned.

- Providing an assistant to be present when the individual has contact with children.
- Redeploying the individual to alternative work in the school so that they do not have unsupervised access to children.
- Moving the child or children to classes where they will not come into contact with the individual, making it clear that this is not a punishment and parents/carers have been consulted.
- Temporarily redeploying the individual to another role in a different location, for example to an alternative school or other work for the school.

If in doubt, the case manager will seek views from the school's personnel adviser and the designated officer at the local authority, as well as the police and children's social care where they have been involved.

Definitions for outcomes of allegation investigations

- **Substantiated:** there is sufficient evidence to prove the allegation
- **Malicious:** there is sufficient evidence to disprove the allegation and there has been a deliberate act to deceive, or to cause harm to the subject of the allegation
- **False:** there is sufficient evidence to disprove the allegation
- **Unsubstantiated:** there is insufficient evidence to either prove or disprove the allegation (this does not imply guilt or innocence)
- **Unfounded:** to reflect cases where there is no evidence or proper basis which supports the allegation being made

6.2 Procedure for dealing with allegations.

In the event of an allegation that meets the criteria above, the case manager will take the following steps:

- Conduct basic enquiries in line with local procedures to establish the facts to help determine whether there is any foundation to the allegation before carrying on with the steps below.
- Discuss the allegation with the designated officer at the local authority. This is to consider the nature, content and context of the allegation and agree a course of action, including whether further enquiries are necessary to enable a decision on how to proceed, and whether it is necessary to involve the police and/or children's social care services. (The case manager may, on occasion, consider it necessary to involve the police *before* consulting the designated officer – for example, if the accused individual is deemed to be an immediate risk to children or there is evidence of a possible criminal offence. In such cases, the case manager will notify the designated officer as soon as practicably possible after contacting the police)
- Inform the accused individual of the concerns or allegations and likely course of action as soon as possible after speaking to the designated officer (and the

police or children's social care services, where necessary). Where the police and/or children's social care services are involved, the case manager will only share such information with the individual as has been agreed with those agencies.

- Where appropriate (in the circumstances described above), carefully consider whether suspension of the individual from contact with children at the school is justified or whether alternative arrangements such as those outlined above can be put in place. Advice will be sought from the designated officer, police and/or children's social care services, as appropriate.
- Where the case manager is concerned about the welfare of other children in the community or the individual's family, they will discuss these concerns with the DSL and make a risk assessment of the situation. If necessary, the DSL may make a referral to children's social care.
- **If immediate suspension is considered necessary**, agree, and record the rationale for this with the designated officer. The record will include information about the alternatives to suspension that have been considered, and why they were rejected. Written confirmation of the suspension will be provided to the individual facing the allegation or concern within 1 working day, and the individual will be given a named contact at the school and their contact details.
- **If it is decided that no further action is to be taken** in regard to the subject of the allegation or concern, record this decision and the justification for it and agree with the designated officer what information should be put in writing to the individual and by whom, as well as what action should follow both in respect of the individual and those who made the initial allegation.
- **If it is decided that further action is needed**, take steps as agreed with the designated officer to initiate the appropriate action in school and/or liaise with the police and/or children's social care services as appropriate.
- Provide effective support for the individual facing the allegation or concern, including appointing a named representative to keep them informed of the progress of the case and considering what other support is appropriate. Colleagues will always be advised to seek the support if their union.
- Inform the parents or carers of the child/children involved about the allegation as soon as possible if they do not already know (following agreement with children's social care services and/or the police, if applicable). The case manager will also inform the parents or carers of the requirement to maintain confidentiality about any allegations made against teachers (where this applies) while investigations are ongoing. Any parent or carer who wishes to have the confidentiality restrictions removed in respect of a teacher will be advised to seek legal advice.
- Keep the parents or carers of the child/children involved informed of the progress of the case (only in relation to their child – no information will be shared regarding the staff member)

- Make a referral to the DBS where it is thought that the individual facing the allegation or concern has engaged in conduct that harmed or is likely to harm a child, or if the individual otherwise poses a risk of harm to a child.

We will inform Ofsted of any allegations of serious harm or abuse by any person living, working, or looking after children at the premises (whether the allegations relate to harm or abuse committed on the premises or elsewhere), and any action taken in respect of the allegations. This notification will be made as soon as reasonably possible and always within 14 days of the allegations being made.

If the school is made aware that the secretary of state has made an interim prohibition order in respect of an individual, we will immediately suspend that individual from teaching, pending the findings of the investigation by the Teaching Regulation Agency.

Where the police are involved, wherever possible the school will ask the police at the start of the investigation to obtain consent from the individuals involved to share their statements and evidence for use in the school's disciplinary process, should this be required at a later point.

6.2 Additional considerations for supply teachers and all contracted staff

If there are concerns or an allegation is made against someone not directly employed by the school, such as a supply teacher or contracted staff member provided by an agency, we will take the actions below in addition to our standard procedures.

- We will not decide to stop using an individual due to safeguarding concerns without finding out the facts and liaising with our LADO to determine a suitable outcome.
- The governing board will discuss with the agency whether it is appropriate to suspend the individual, or redeploy them to another part of the school, while the school carries out the investigation.
- We will involve the agency fully, but the school will take the lead in collecting the necessary information and providing it to the LADO as required.
- We will address issues such as information sharing, to ensure any previous concerns or allegations known to the agency are considered (we will do this, for example, as part of the allegations management meeting or by liaising directly with the agency where necessary)

When using an agency, we will inform them of our process for managing allegations, and keep them updated about our policies as necessary, and will invite the agency's HR manager or equivalent to meetings as appropriate.

Timescales

We will deal with all allegations as quickly and effectively as possible and will endeavour to comply with the following timescales, where reasonably practicable:

- Any cases where it is clear immediately that the allegation is unsubstantiated or malicious should be resolved within 1 week.
- If the nature of an allegation does not require formal disciplinary action, appropriate action should be taken within 3 working days.
- If a disciplinary hearing is required and can be held without further investigation, this should be held within 15 working days.

However, these are objectives only and where they are not met, we will endeavour to take the required action as soon as possible thereafter.

7. Specific actions

7.1 Action following a criminal investigation or prosecution.

The case manager will discuss with the local authority's designated officer whether any further action, including disciplinary action, is appropriate and, if so, how to proceed, considering information provided by the police and/or children's social care services.

7.2 Conclusion of a case where the allegation is substantiated.

If the allegation is substantiated and the individual is dismissed or the school ceases to use their services, or the individual resigns or otherwise ceases to provide their services, the school will make a referral to the DBS for consideration of whether inclusion on the barred lists is required.

If the individual concerned is a member of teaching staff, the school will consider whether to refer the matter to the Teaching Regulation Agency to consider prohibiting the individual from teaching.

7.3 Individuals returning to work after suspension.

If it is decided on the conclusion of a case that an individual who has been suspended can return to work, the case manager will consider how best to facilitate this.

The case manager will also consider how best to manage the individual's contact with the child or children who made the allegation if they are still attending the school.

7.4 Unsubstantiated, unfounded, false, or malicious reports

If a report is:

- Determined to be unsubstantiated, unfounded, false, or malicious, the DSL will consider the appropriate next steps. If they consider that the child and/or person who made the allegation is in need of help, or the allegation may have been a cry for help, a referral to children's social care may be appropriate.

- Shown to be deliberately invented, or malicious, the school will consider whether any disciplinary action is appropriate against the individual(s) who made it.

7.5 Unsubstantiated, unfounded, false, or malicious allegations

If an allegation is:

- Determined to be unsubstantiated, unfounded, false, or malicious, the LADO and case manager will consider the appropriate next steps. If they consider that the child and/or person who made the allegation is in need of help, or the allegation may have been a cry for help, a referral to children's social care may be appropriate.
- Shown to be deliberately invented, or malicious, the school will consider whether any disciplinary action is appropriate against the individual(s) who made it.

7.6 Confidentiality and information sharing

The school will make every effort to maintain confidentiality and guard against unwanted publicity while an allegation is being investigated or considered.

The case manager will take advice from the LADO, police, and children's social care services, as appropriate, to agree:

- Who needs to know about the allegation and what information can be shared?
- How to manage speculation, leaks, and gossip, including how to make parents or carers of a child/children involved aware of their obligations with respect to confidentiality.
- What, if any, information can be reasonably given to the wider community to reduce speculation
- How to manage press interest if, and when, it arises

8. Record-keeping

The case manager will maintain clear records about any case where the allegation or concern meets the criteria above and store them on the individual's confidential personnel file for the duration of the case.

The records of any allegation that, following an investigation, is found to be malicious or false will be deleted from the individual's personnel file (unless the individual consents for the records to be retained on the file).

For all other allegations (which are not found to be malicious or false), the following information will be kept on the file of the individual concerned:

- A clear and comprehensive summary of the allegation

- Details of how the allegation was followed up and resolved.
- Notes of any action taken, decisions reached and the outcome.
- A declaration on whether the information will be referred to in any future reference.

In these cases, the school will provide a copy to the individual, in agreement with children's social care or the police as appropriate. Where records contain information about allegations of sexual abuse, we will preserve these for the Independent Inquiry into Child Sexual Abuse (IICSA), for the term of the inquiry. We will retain all other records at least until the individual has reached normal pension age, or for 10 years from the date of the allegation if that is longer.

9. References

When providing employer references, we will:

- Not refer to any allegation that has been found to be false, unfounded, unsubstantiated, or malicious, or any repeated allegations which have all been found to be false, unfounded, unsubstantiated, or malicious.
- Include substantiated allegations, provided that the information is factual and does not include opinions.

10. Learning lessons

After any cases where the allegations are *substantiated*, the case manager will review the circumstances of the case with the local authority's designated officer to determine whether there are any improvements that we can make to the school's procedures or practice to help prevent similar events in the future.

This will include consideration of (as applicable):

- Issues arising from the decision to suspend the member of staff.
- The duration of the suspension
- Whether or not the suspension was justified
- The use of suspension when the individual is subsequently reinstated. We will consider how future investigations of a similar nature could be carried out without suspending the individual.

For all other cases, the case manager will consider the facts and determine whether any improvements can be made.

11. Non-recent allegations

Abuse can be reported, no matter how long ago it happened.

We will report any non-recent allegations made by a child to the LADO in line with our local authority's procedures for dealing with non-recent allegations.

Where an adult makes an allegation to the school that they were abused as a child, we will advise the individual to report the allegation to the police.

12. Concerns that do not meet the harm threshold

The section is based on Concerns that do not meet the harm threshold' in part 4 of Keeping Children Safe in Education.

This section applies to all concerns (including allegations) about members of staff, supply teachers, volunteers, and contractors, which do not meet the harm threshold set out in the section above.

Concerns may arise through, for example:

- Suspicion
- Complaint
- Safeguarding concern or allegation from another member of staff
- Disclosure made by a child, parent, or other adult within or outside the school.
- Pre-employment vetting checks

We recognise the importance of responding to and dealing with any concerns in a timely manner to safeguard the welfare of children.

12.1 Definition of low-level concerns

The term 'low-level' concern is any concern – no matter how small – that an adult working in or on behalf of the school may have acted in a way that:

- Is inconsistent with the staff code of conduct, including inappropriate conduct outside of work, **and**
- Does not meet the allegations threshold or is otherwise not considered serious enough to consider a referral to the designated officer at the local authority.

Examples of such behaviour could include, but are not limited to:

- Being overly friendly with children
- Having favourites
- Taking photographs of children on their mobile phone
- Engaging with a child on a one-to-one basis in a secluded area or behind a closed door
- Humiliating pupils
- Using inappropriate sexualised, intimidating, or offensive language

12.2 Sharing low-level concerns.

We recognise the importance of creating a culture of openness, trust, and transparency to encourage all staff to share low-level concerns so that they can be addressed appropriately.

We will create this culture by:

- Ensuring staff are clear about what appropriate behaviour is and are confident in distinguishing expected and appropriate behaviour from concerning, problematic or inappropriate behaviour, in themselves and others.
- Empowering staff to share any low-level concerns as per the Safeguarding Policy 2024 and KCSIE 2024.
- Empowering staff to self-refer.
- Addressing unprofessional behaviour and supporting the individual to correct it at an early stage.
- Providing a responsive, sensitive, and proportionate handling of such concerns when they are raised.
- Helping to identify any weakness in the school's safeguarding system.

With all disclosures they will be treated by the Executive Headteacher and DSL with the upmost confidence and will act upon in a swift and appropriate manner. The confident will remain anonymous in any investigation to support the school's open culture of safeguarding all.

12.3 Responding to low-level concerns.

If the concern is raised via a third party, the Executive Headteacher will collect evidence where necessary by speaking:

- Directly to the person who raised the concern unless it has been raised anonymously.
- To the individual involved and any witnesses

The Executive Headteacher or Head of School will use the information collected to categorise the type of behaviour and determine any further action, in line with the school's Staff Behaviour Code of Conduct. The Executive headteacher will be the ultimate decision-maker in respect of all low-level concerns, though they may wish to collaborate with the DSL.

12.4 Record keeping

All low-level concerns will be recorded in writing. In addition to details of the concern raised, records will include the context in which the concern arose, any action taken and the rationale for decisions and action.

Records will be:

- Kept confidential, held securely, and comply with the DPA 2018 and UK GDPR

- Reviewed so that potential patterns of concerning, problematic or inappropriate behaviour can be identified. Where a pattern of such behaviour is identified, we will decide on a course of action, either through our disciplinary procedures or, where a pattern of behaviour moves from a concern to meeting the harms threshold as described in section 1 of this appendix, we will refer it to the designated officer at the local authority.
- Retained at least until the individual leaf's employment at the school.

Where a low-level concern relates to a supply teacher or contractor, we will notify the individual's employer, so any potential patterns of inappropriate behaviour can be identified.

References

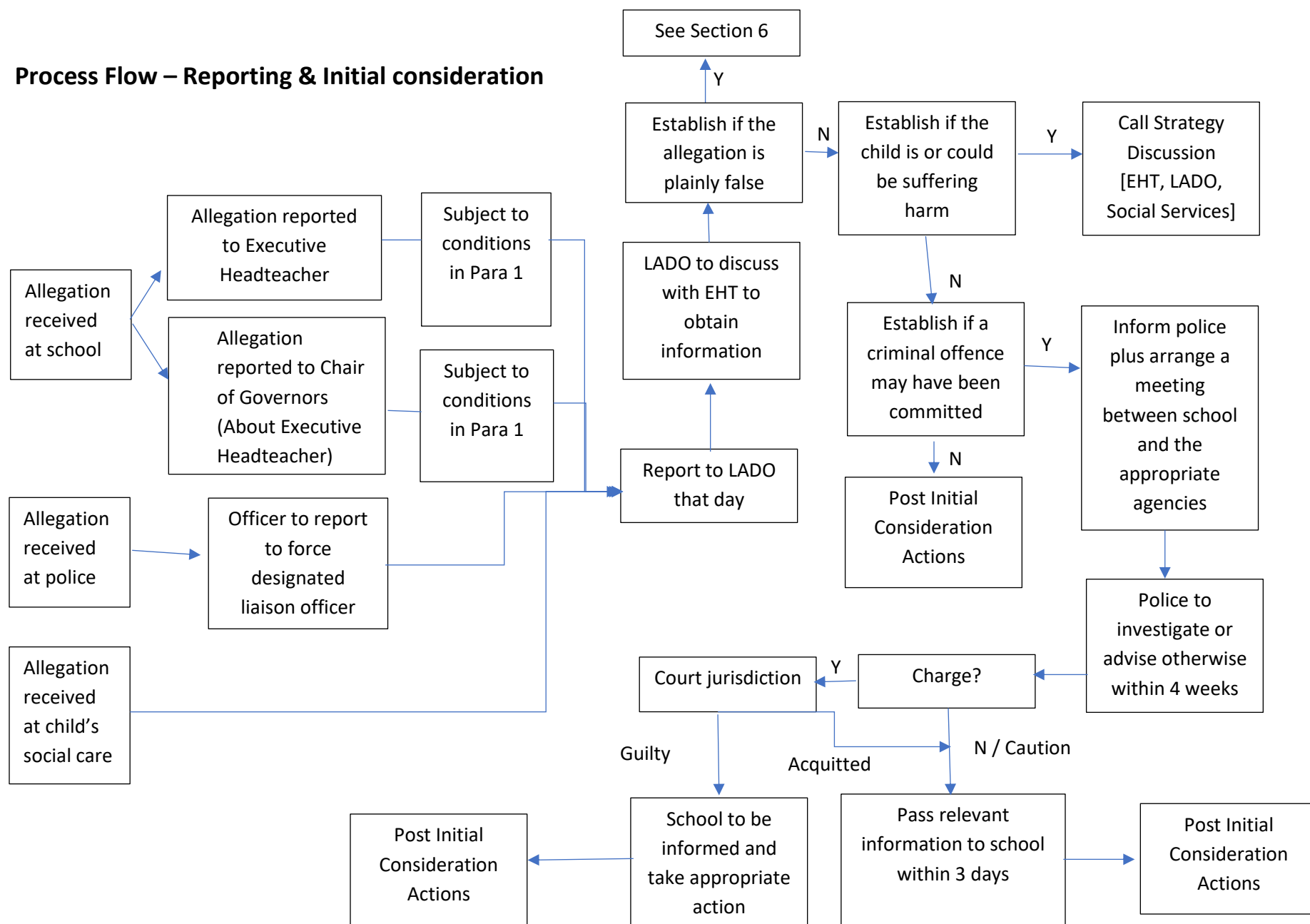
We will not include low-level concerns in references unless:

- The concern (or group of concerns) has met the threshold for referral to the designated officer at the local authority and is found to be substantiated; and/or
- The concern (or group of concerns) relates to issues which would ordinarily be included in a reference, such as misconduct or poor performance.

13. Monitoring

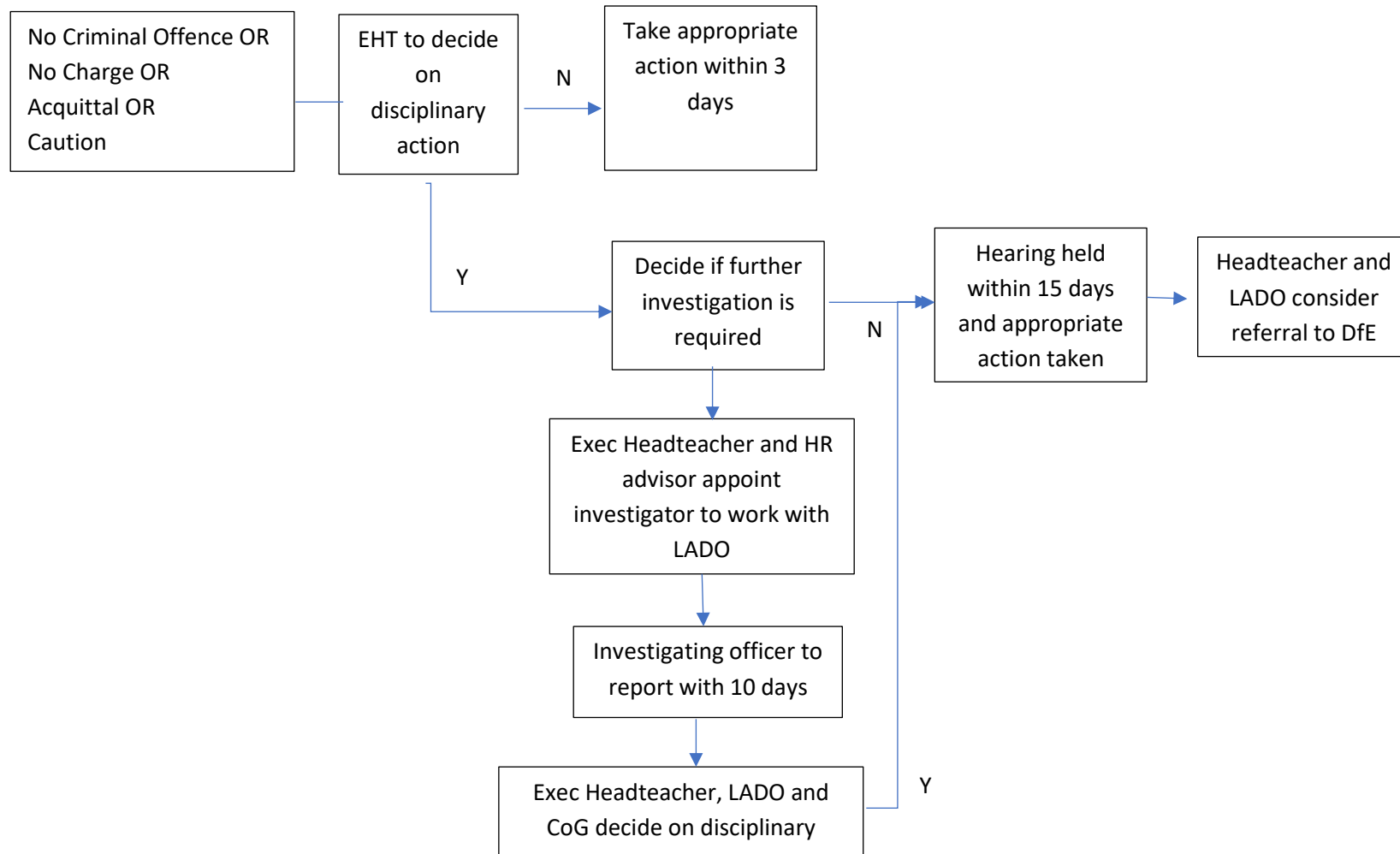
The Governing Body will monitor the outcomes and impact of this policy on a regular basis (yearly), including the number of complaints and the actions taken by the school.

Process Flow – Reporting & Initial consideration



?

Process Flow – Post Initial Consideration



SUMMARY OF PROCESS

Appendix A

Recognising abuse and taking action

Staff, volunteers, and governors must follow the procedures set out below in the event of a safeguarding issue.

Please note – in this and subsequent sections, you should take any references to the DSL to mean “the DSL (or deputy DSL).”

If a child is suffering or likely to suffer harm, or in immediate danger

Make a referral to children’s social care and/or the police **immediately** if you believe a child is suffering or likely to suffer from harm, or in immediate danger. **Anyone can make a referral.**

Tell the DSL (see section 5.2) as soon as possible if you make a referral directly. As referenced in the Safeguarding policy.

<https://www.gov.uk/report-child-abuse-to-local-council>

If a child makes a disclosure to you

If a child discloses a safeguarding issue to you, you should:

- Listen to and believe them. Allow them time to talk freely and do not ask leading questions.
- Stay calm and do not show that you are shocked or upset.
- Tell the child they have done the right thing in telling you. Do not tell them they should have told you sooner.
- Explain what will happen next and that you will have to pass this information on. Do not promise to keep it a secret.
- Write up your conversation as soon as possible in the child’s own words. Stick to the facts, and do not put your own judgement on it.
- Sign and date the write-up and pass it on to the DSL. Alternatively, if appropriate, make a referral to children’s social care and/or the police directly (see 7.1), and tell the DSL as soon as possible that you have done so.

If you discover that FGM has taken place, or a pupil is at risk of FGM

The Department for Education’s Keeping Children Safe in Education explains that FGM comprises “all procedures involving partial or total removal of the external female genitalia, or other injury to the female genital organs.”

FGM is illegal in the UK and a form of child abuse with long-lasting, harmful consequences. It is also known as ‘female genital cutting,’ ‘circumcision’ or ‘initiation.’

Possible indicators that a pupil has already been subjected to FGM, and factors that suggest a pupil may be at risk.

Any teacher who discovers (either through disclosure by the victim or visual evidence) that an act of FGM appears to have been carried out on a **pupil under 18** must immediately report this to the police, personally. This is a statutory duty, and teachers will face disciplinary sanctions for failing to meet it. Unless they have good reason not to, they should also discuss the case with the DSL and involve children's social care as appropriate.

Any other member of staff who discovers that an act of FGM appears to have been carried out on a **pupil under 18** must speak to the DSL and follow our local safeguarding procedures. The duty for teachers mentioned above does not apply in cases where a pupil is *at risk* of FGM or FGM is suspected but is not known to have been carried out. Staff should not examine pupils.

Any member of staff who suspects a pupil is *at risk* of FGM or suspects that FGM has been carried out or discovers that a pupil **aged 18 or over** appears to have been a victim of FGM must speak to the inform the police, refer this to the DSL and follow our local safeguarding procedures.

If you have concerns about a child (as opposed to believing a child is suffering or likely to suffer from harm, or is in immediate danger)

Where possible, speak to the DSL first to agree a course of action.

If in exceptional circumstances the DSL is not available, this should not delay appropriate action being taken. Speak to a member of the senior leadership team and/or take advice from local authority children's social care. You can also seek advice at any time from the NSPCC helpline on 0808 800 5000.

Make a referral to local authority children's social care directly, if appropriate (see 'Referral' below). Share any action taken with the DSL as soon as possible.

Early help

If early help is appropriate, the DSL will generally lead on liaising with other agencies and setting up an inter-agency assessment as appropriate. Staff may be required to support other agencies and professionals in an early help assessment, in some cases acting as the lead practitioner.

The DSL will keep the case under constant review and the school will consider a referral to local authority children's social care if the situation does not seem to be improving. Timelines of interventions will be monitored and reviewed.

Referral

If it is appropriate to refer the case to local authority children's social care or the police, the DSL will make the referral or support you to do so. If you make a referral directly, you must tell the DSL as soon as possible.

The local authority will make a decision within 1 working day of a referral about what course of action to take and will let the person who made the referral know the outcome. The DSL or person who made the referral must follow up with the local authority if this information is not made available, and ensure outcomes are properly recorded. If the child's situation does not seem to be improving after the referral, the DSL or person who made the referral must follow local escalation procedures to ensure their concerns have been addressed and that the child's situation improves.

If you have concerns about extremism

If a child is not suffering or likely to suffer from harm, or in immediate danger, where possible speak to the DSL first to agree a course of action. If in exceptional circumstances the DSL is not available, this should not delay appropriate action being taken. Speak to a member of the senior leadership team and/or seek advice from local authority children's social care. Make a referral to local authority children's social care directly, if appropriate (see 'Referral' above).

Where there is a concern, the DSL will consider the level of risk and decide which agency to make a referral to. This could include [Channel](#), the government's programme for identifying and supporting individuals at risk of being drawn into terrorism, or the local authority children's social care team.

The Department for Education also has a dedicated telephone helpline, 020 7340 7264, which school staff and governors can call to raise concerns about extremism with respect to a pupil. You can also email counter.extremism@education.gov.uk. Note that this is not for use in emergency situations.

In an emergency, call 999 or the confidential anti-terrorist hotline on 0800 789 321 if you:

- Think someone is in immediate danger.
- Think someone may be planning to travel to join an extremist group.
- See or hear something that may be terrorist related.

Allegation made to school.

The allegation should be reported to the Executive Headteacher immediately unless the allegation is about the Executive Headteacher in which case it should be reported to the

Chair of Governors.

If you have concerns about a member of staff or volunteer, or an allegation is made about a member of staff or volunteer posing a risk of harm to children, speak to the Executive Headteacher. If the concerns/allegations are about the Executive Headteacher, speak to the chair of governors. Their email is ldawson1@bemrose.derby.sch.uk

The Executive Headteacher/Chair of Governors will then follow the procedures set out in appendix A, if appropriate.

Allegation made to the Police or children's social care

If an allegation is made to the police, the officer who receives it should report it to the force designated liaison officer immediately and the designated liaison officer should inform the LA designated officer straight away. Similarly, if the allegation is made to children's social care the person who receives it should report it to the LA designated officer immediately.

Initial consideration

The LA designated officer will discuss the matter with the Executive Headteacher and where necessary obtain further details of the allegation and the circumstances in which it was made. NB the Executive Headteacher should not investigate the allegation at this stage. The discussion should also consider whether there is evidence/information that establishes that the allegation is false or unfounded.

If the allegation is not patently false and there is cause to suspect that a child is suffering or is likely to suffer significant harm, the LA designated officer will immediately refer to children's social care and ask for a strategy discussion in accordance with "Working Together" to be convened straight away. In those circumstances the strategy discussion should include the LA designated officer and the Executive Headteacher.

If there is not cause to suspect that "significant harm" is an issue, but a criminal offence might have been committed, the LA designated officer should immediately inform the police and convene a similar discussion to decide whether a police investigation is needed. That discussion should also involve the school and any other agencies involved with the child.

If an allegation is determined to be false, the LA designated officer should refer the matter to children's social care to determine whether the child concerned is in need of services or may have been abused by someone else. The Executive Headteacher should consider if any further action is required.

Case subject to police investigation

If a criminal investigation is required, the police will aim to complete their enquiries as quickly as possible consistent with a fair and thorough investigation and will keep the progress of the case under review. They should at the outset set a target date for reviewing progress of the investigation and consulting the CPS about whether to proceed with the

investigation, charge the individual with an offence, or close the case. Wherever possible that review should take place **no later than 4 weeks** after the initial action meeting and if the decision is to continue to investigate the allegation dates for subsequent review should be set at that point. (It is open to the police to consult the CPS about the evidence that will need to be obtained in order to charge a person with an offence at any stage.).

If the police and/or CPS decide not to charge the individual with an offence, or decide to administer a caution, or the person is acquitted by a Court, the police should wherever possible aim to pass all information they have which may be relevant to a disciplinary case to the employer within 3 working days of the decision. In those circumstances, the employer and the LA designated officer should proceed. N.B. In any case, in which children's social care has undertaken enquiries to determine whether the child or children are in need of protection, any information obtained in the course of those enquiries, which is relevant to a disciplinary case, should also be passed to the school.

If the person is convicted of an offence, the police should also inform the employer straight away so that appropriate action can be taken.

Action following initial consideration

Where the initial consideration decides that the allegation does not involve a possible criminal offence it will be for the employer to deal with it. In such cases, if the nature of the allegation does not require formal disciplinary action, the Executive Headteacher should institute appropriate action **within 3 working days**. If a disciplinary hearing is required and can be held without further investigation, the hearing should be held **within 15 working days**.

Where further investigation is required to inform consideration of disciplinary action the Executive Headteacher and the school personnel adviser should discuss who would undertake that with the LA designated officer. In some settings and circumstances, it may be appropriate for the disciplinary investigation to be conducted by a person who is independent of the school. In any case, the investigating officer should aim to provide a report to the employer **within 10 working days**.

On receipt of the report of the disciplinary investigation, the Executive Headteacher and Chair of governors should consult the LA designated officer and decide whether a disciplinary hearing is needed **within 2 working days**. If a hearing is needed it should be held **within 15 working days**.

In any case, in which children's social care has undertaken enquiries to determine whether the child or children are in need of protection, the Executive Headteacher and Chair of governors should take account of any relevant information obtained in the course of those enquiries when considering disciplinary action.

The LA designated officer should continue to liaise with the school to monitor progress of the case and provide advice /support when required/requested.

Referral to DfE

If on conclusion of the case the school ceases to use the person's services, or the person ceases to provide his/her services, the school should consult the LA designated officer about whether a referral to DfE is required. If a referral is appropriate, the report should be made within one month.

SUPPORTING THOSE INVOLVED

Parents or carers of a child or children involved should be told about the allegation as soon as possible if they do not already know of it. They should also be kept informed about the progress of the case and told the outcome where there is not a criminal prosecution. That includes the outcome of any disciplinary process. The deliberations of a disciplinary hearing, and the information taken into account in reaching a decision, cannot normally be disclosed, but the parents or carers of the child should be told the outcome

In cases where a child may have suffered significant harm [section 47], or there may be a criminal prosecution, children's social care, or the police as appropriate, should consider what support the child or children involved may need.

The school should also keep the person who is the subject of the allegations informed of the progress of the case and consider what other support is appropriate for the individual. This may include support via the local authority occupational health service. If the person is suspended, the school should also keep the individual informed about developments at school. If the person is a member of a union or professional association s/he should be advised to contact that body at the outset.

CONFIDENTIALITY

Every effort should be made to maintain confidentiality and guard against unwanted publicity while an allegation is being considered. In accordance with the Association of Chief Police Officers (ACPO) guidance, the police will not normally provide any information to the Press or media that might identify an individual who is under investigation, unless and until the person is charged with a criminal offence. (In exceptional cases where the police might depart from that rule, e.g., an appeal to trace a suspect, the reasons should be documented, and partner agencies consulted beforehand.) The system of self-regulation, overseen by the Press Complaints Commission, also provides safeguards against the publication of inaccurate or misleading information.

RESIGNATIONS AND "COMPROMISE AGREEMENTS"

The fact that a person tenders his or her resignation, or ceases to provide their services, must not prevent an allegation being followed up in accordance with these procedures. It is important that every effort be made to reach a conclusion in all cases of allegations bearing on the safety or welfare of children including any in which the person concerned refuses to cooperate with the process. Wherever possible the person should be given a full opportunity to answer the allegation and make representations about it, but the process of recording the

allegation and any supporting evidence and reaching a judgement about whether it can be regarded as substantiated on the basis of all the information available should continue even if that cannot be done or the person does not cooperate. It may be difficult to reach a conclusion in those circumstances, and it may not be possible to apply any disciplinary sanctions if a person's period of notice expires before the process is complete, but it is important to reach and record a conclusion wherever possible.

Similarly, so called "compromise agreements" by which a person agrees to resign, the school agrees not to pursue disciplinary action, and both parties agree a form of words to be used in any future reference, must not be used in these cases. In any event, such an agreement will not prevent a thorough police investigation where that is appropriate. Nor can it override the statutory duty to make a referral to DBS, TRS and List 99 where circumstances require that.

RECORD KEEPING

It is important that a clear and comprehensive summary of any allegations made, details of how the allegation was followed up and resolved, and a note of any action taken, and decisions reached, is kept on a person's confidential personnel file, and a copy provided to the person concerned. The purpose of the record is to enable accurate information to be given in response to any future request for a reference if the person has moved on. It will provide clarification in cases where a future DBS or Disqualification through association reveals information from the police about an allegation that did not result in a criminal conviction. In addition, it will help to prevent unnecessary re-investigation if, as sometimes happens, an allegation re-surfaces after a period of time. The record should be retained at least until the person has reached normal retirement age or for a period of 10 years from the date of the allegation if that is longer.

TIMESCALES

It is in everyone's interest to resolve cases as quickly as possible consistent with a fair and thorough investigation. Every effort should be made to manage cases to avoid any unnecessary delay. Indicative target timescales are shown for different actions in the summary description of the process below. Those are not performance indicators: the time taken to investigate and resolve individual cases depends on a variety of factors including the nature, seriousness, and complexity of the allegation, but they provide useful targets to aim for that are achievable in many cases.

OVERSIGHT AND MONITORING

The LA should have a named senior officer who has overall responsibility for oversight of the procedures for dealing with allegations; for resolving any inter-agency issues, and for liaison with the Local Safeguarding Children Board (LSCB) on the subject. In addition, designated LA officers should also be involved in the management and oversight of individual cases. The designated LA officer(s) will provide advice and guidance to the school, in addition to liaising with the police and other agencies and monitoring the progress of cases to ensure that they are dealt with as quickly as possible consistent with a thorough

and fair process.

Police forces should also identify officers to fill similar roles. A senior officer to have strategic oversight of the arrangements and ensure compliance, and others, perhaps unit managers, who will be responsible for: liaising with the designated LA officer(s), taking part in the strategy discussion, or initial evaluation, subsequently reviewing the progress of those cases in which there is a police investigation, and sharing information on completion of the investigation or any prosecution.

Appendix B Procedure for action following a criminal investigation or prosecution.

The police or the Crown Prosecution Service (CPS) should inform the school and LA designated officer straightaway when a criminal investigation and any subsequent trial is complete, or if it is decided to close an investigation without charge, or not to prosecute after the person has been charged. In those circumstances the LA designated officer should discuss with the Executive Headteacher and Chair of governors whether any further action, including disciplinary action is appropriate and, if so, how to proceed. The information provided by the police and or children's social care should inform that decision. The options will depend on the circumstances of the case and the consideration will need to take account of the result of the police investigation or the trial, as well as the different standard of proof required in disciplinary and criminal proceedings.

Appendix C Action on conclusion of a case

If the allegation is substantiated and the person is dismissed or the school ceases to use the person's services, or the person resigns or otherwise ceases to provide his/her services, the LA designated officer should discuss with the school and its personnel adviser whether a referral to DfE for consideration of DBS, TRA and List 99 action and the form and content of a referral.

In cases where it is decided on the conclusion of the case that a person who has been suspended can return to work the school should consider how best to facilitate that. Most people will benefit from some help and support to return to work after a very stressful experience. Depending on the individual's circumstances, a phased return and/or the provision of a mentor to provide assistance and support in the short term may be appropriate. The school should also consider how the person's contact with the child or children who made the allegation can best be managed if they are still attending the school.

At the conclusion of a case in which an allegation is substantiated the LA designated officer should review the circumstances of the case with the Executive Headteacher and Chair of Governors to determine whether there are any improvements to be made to the school's procedures or practice to help prevent similar events in the future.

Appendix D Training

All staff

All staff members will undertake safeguarding and child protection training at induction, including on whistle-blowing procedures, to ensure they understand the school's

safeguarding systems and their responsibilities, and can identify signs of possible abuse or neglect. This training will be regularly updated and will be in line with advice from the 3 safeguarding partners.

All staff will have training on the government's anti-radicalisation strategy, Prevent, to enable them to identify children at risk of being drawn into terrorism and to challenge extremist ideas.

Staff will also receive regular safeguarding and child protection updates (for example, through emails, e-bulletins, and staff meetings) as required, but at least annually. Contractors who are provided through a private finance initiative (PFI) or similar contract will also receive safeguarding training. Volunteers will receive appropriate training, if applicable.

The DSL and deputies

The DSL and [deputies will undertake child protection and safeguarding training at least every 2 years. In addition, they will update their knowledge and skills at regular intervals and at least annually (for example, through e-bulletins, meeting other DSLs, or taking time to read and digest safeguarding developments). They will also undertake Prevent awareness training.

Governors

All Governors receive training about safeguarding, to make sure they have the knowledge and information needed to perform their functions and understand their responsibilities.

As the Chair of Governors may be required to act as the 'case manager' in the event that an allegation of abuse is made against the Executive Headteacher, they receive training in managing allegations for this purpose.

Recruitment – interview panels

At least one person conducting any interview for a post at the school will have undertaken Safer Recruitment Training. This will cover, as a minimum, the contents of the Department for Education's statutory guidance, Keeping Children Safe in Education, and will be in line with local safeguarding procedures.

Appendix E- Sexting

Your responsibilities when responding to an incident.

If you are made aware of an incident involving sexting (also known as 'youth produced sexual imagery'), you must report it to the DSL immediately.

You must **not**:

- View, download or share the imagery yourself, or ask a pupil to share or download it. If you have already viewed the imagery by accident, you must report this to the DSL.
- Delete the imagery or ask the pupil to delete it.
- Ask the pupil(s) who are involved in the incident to disclose information regarding the imagery (this is the DSL's responsibility)
- Share information about the incident with other members of staff, the pupil(s) it involves or their, or other, parents and/or carers.
- Say or do anything to blame or shame any young people involved.

You should explain that you need to report the incident and reassure the pupil(s) that they will receive support and help from the DSL.

Initial review meeting

Following a report of an incident, the DSL will hold an initial review meeting with appropriate school staff. This meeting will consider the initial evidence and aim to determine:

- Whether there is an immediate risk to pupil(s)
- If a referral needs to be made to the police and/or children's social care
- If it is necessary to view the imagery in order to safeguard the young person (in most cases, imagery should not be viewed)
- What further information is required to decide on the best response?
- Whether the imagery has been shared widely and via what services and/or platforms (this may be unknown)
- Whether immediate action should be taken to delete or remove images from devices or online services
- Any relevant facts about the pupils involved which would influence risk assessment.
- If there is a need to contact another school, college, setting or individual.
- Whether to contact parents or carers of the pupils involved (in most cases parents should be involved)

The DSL will make an immediate referral to police and/or children's social care if:

- The incident involves an adult.
- There is reason to believe that a young person has been coerced, blackmailed, or groomed, or if there are concerns about their capacity to consent (for example owing to special educational needs)

- What the DSL knows about the imagery suggests the content depicts sexual acts which are unusual for the young person's developmental stage, or are violent
- The imagery involves sexual acts and any pupil in the imagery is under 13.
- The DSL has reason to believe a pupil is at immediate risk of harm owing to the sharing of the imagery (for example, the young person is presenting as suicidal or self-harming)

If none of the above apply then the DSL, in consultation with the Executive headteacher and other members of staff as appropriate, may decide to respond to the incident without involving the police or children's social care.

Further review by the DSL

If at the initial review stage, a decision has been made not to refer to police and/or children's social care, the DSL will conduct a further review.

They will hold interviews with the pupils involved (if appropriate) to establish the facts and assess the risks.

If at any point in the process there is a concern that a pupil has been harmed or is at risk of harm, a referral will be made to children's social care and/or the police immediately.

Informing parents

The DSL will inform parents at an early stage and keep them involved in the process, unless there is a good reason to believe that involving them would put the pupil at risk of harm.

Referring to the police

If it is necessary to refer an incident to the police, this will be done through the police and the child protection unit.

Recording incidents

All sexting incidents and the decisions made in responding to them will be recorded.

The record-keeping arrangements set out in this policy also apply to recording incidents of sexting.

Curriculum coverage

The PSHE curriculum embraces these elements in its Schemes of Learning and Schemes of work. This is identified and delivered by staff at appropriate moments. In addition, Let's Explore and school assemblies cover this at least yearly if not more.

Pupils are taught about the issues surrounding sexting as part of our PSHE education and computing programmes. Teaching covers the following in relation to sexting:

- What it is?
- How it is most likely to be encountered?
- The consequences of requesting, forwarding, or providing such images, including when it is and is not abusive.
- Issues of legality
- The risk of damage to people's feelings and reputation

Pupils also learn the strategies and skills needed to manage:

- Specific requests or pressure to provide (or forward) such images.
- The receipt of such images

This policy on sexting is also shared with pupils so they are aware of the processes the school will follow in the event of an incident.

Notifying parents

Where appropriate, we will discuss any concerns about a child with the child's parents. The DSL will normally do this in the event of a suspicion or disclosure. Other staff will only talk to parents about any such concerns following consultation with the DSL.

If we believe that notifying the parents would increase the risk to the child, we will discuss this with the local authority children's social care team before doing so. In the case of allegations of abuse made against other children, we will normally notify the parents of all the children involved.

Pupils with special educational needs and disabilities

We recognise that pupils with special educational needs (SEN) and disabilities can face additional safeguarding challenges. Additional barriers can exist when recognising abuse and neglect in this group, including:

- Assumptions that indicators of possible abuse such as behaviour, mood and injury relate to the child's disability without further exploration.
- Pupils being more prone to peer group isolation than other pupils.
- The potential for pupils with SEN and disabilities being disproportionately impacted by behaviours such as bullying, without outwardly showing any signs.
- Communication barriers and difficulties in overcoming these barriers.

We offer extra pastoral support for pupils with SEN and disabilities. This includes: Working directly with the key worker, social skill session and bespoke counselling opportunities.

Mobile phones and cameras

Staff are allowed to bring their personal phones to school for their own use but will limit such use to non-contact time when pupils are not present. Staff members' personal phones will remain in their bags or cupboards during contact time with pupils. Staff will not take pictures or recordings of pupils on their personal phones or cameras. We will follow the General Data Protection Regulation and Data Protection Act 2018 when taking and storing photos and recordings for use in the school. This is also covered in the GDPR policy and Staff Code of Conduct.