

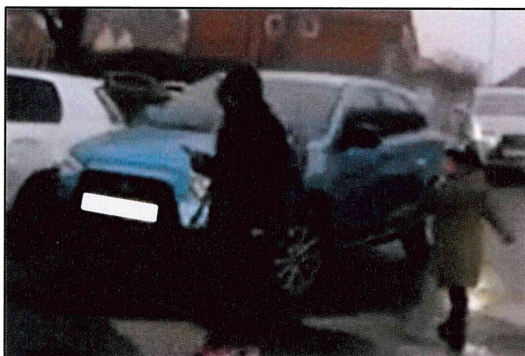
Primary Parking

Dear Primary Parents,

I am taking this opportunity to write to you to stress how important good parking and safe driving is on our Primary site around our youngest children.

We have seen in the past week parking on the school pavements and cars driving on the zebra crossing when parents and children are walking across. You can see images we have captured below.

Driving on the Zebra Crossing



Parking on the Pavement



I do not want to close the site to all cars but equally I do not want a child or parent to be hurt by irresponsible driving. If there isn't a change in driving and parking, we will initially ban the car involved from the site and if collectively there is no improvement, we will make the site car free to parents. Parents will have to walk onto the site to collect their children and park in the wider community.

I thank you all in anticipation of your support in this matter and we look forward to our children being safe to and from school each day.

Yours faithfully

Neil Wilkinson
Executive Headteacher