

The Bemrose School



KS4 Learning Pathways Option Choices 2024-2026

Name:

Form:

Introduction

Dear Parent /Carer and Year 9 pupil

The end of Year 9 and your choices is a very important time in the life for any pupil. It is the first time that you have had any real choice about the courses you will study and the exams you will take in **2026**. This may seem a long time away, but it will arrive very quickly. It is important that you listen carefully to advice offered to you, think carefully about what the best choices for you will be and choose carefully so that you are picking for the right reasons. You have completed 3 years with us, and your choices build on the foundations you have made.



The right reasons:



YOU know you will do well in this subject. Look at your subject reports

YOU enjoy the subject and feel you want to study this at GCSE or beyond

YOU need the subject for your potential future career

Changing subjects is not simple or always possible and will always involve catching up with much missed learning. We do not allow this without a very good, well thought through reason.

The wrong reasons:



YOUR friends are doing it. This will not help you now or in later life

YOU think it will be easy. GCSE is a challenge, and all pupils need to work hard

You will not get a completely free choice and we will give you very strong and guiding advice as to the best subjects you should be studying. Everyone in the country has to study some of the subjects (such as English, maths, science, RE and PE). At The Bemrose School, PSHE and RSE are also compulsory, as we believe that it is very important that students can understand how the world works.

We have decided, for those students for whom this is appropriate, that they have a guided choice from a list of courses in the option blocks and then we build a timetable that gives most people most of what they want. As a result, please be prepared for a further conversation, if you are not able to follow all the courses you have chosen. We will do our very best but we cannot promise to run a course if it is not viable, for example, if there is only a very small number of students in the group.

We hope that all our students going into Year 10 in June 2024 will follow our, and parents' advice, choose wisely and enjoy their choices next year. We look forward to your continuing success at The Bemrose School.

A handwritten signature in black ink, appearing to be 'M' followed by a stylized flourish.

Mr Neil Wilkinson
Executive Headteacher

Contract

What you can expect from school

This booklet outlines the course details and the support and the resources the school will provide to help you gain the best results you are capable of.

Over the two-year course, commencing in Summer 2024, you and your parents will have numerous opportunities to come into school to discuss your progress and each year you will be given a written report to take home after each data collection (Nov, Feb, May).



You will have access to careers advice throughout the course.

What the school will expect from you

- Your attendance should never slip below 95%
- You must arrive to school and lessons punctually
- You must be smartly turned out in your full school uniform
- You must arrive to each lesson correctly equipped with a large bag, books, diary, pens, pencils, calculators, PE kit and DT materials you need.
- Home learning must be done carefully and handed in on time.

I agree to this contract. I promise to work hard with the school to gain the best results I can.

Student name:.....

Form:

Student signature:.....

Parent/Carer signature:.....

Date:.....

Which subjects will I study?

All students will take these CORE SUBJECTS (green section of the booklet):

- **English Language and Literature** – this will lead to two GCSE's.
- **Mathematics** – this will lead to one GCSE.
- **Science** – this will lead to two GCSE's.
- **RE**– for some students this will lead to one GCSE.
- **PE** – a compulsory practical activity
- **PSHE** – a compulsory enrichment activity

What choices can I make?

You are able to choose **3 subjects** to study

1 subject **must** come from the **mandatory choices**. There is more information about these subjects in the yellow section of the booklet.

The additional 2 choices may come from the **free choices** section. There is more information about these subjects in the blue section of this booklet.

Along with information about each subject, there will be details of any minimum entry requirements. There is also information about the skills you will learn/develop in each subject; how it links to other subjects and the career opportunities you will gain from studying the subject.



Mandatory Subjects

You must choose **at least** one of these:

- French
- Spanish
- Geography
- History
- Triple Science
- Computer Science

Free Choices

You can choose **up to two** of these:

- GCSE Art and Design
- BTEC Level 1/Level 2 Tech Award in Music Practice
- GCSE Food Preparation and Nutrition-EDUCAS
- GCSE Design & Technology-Resistant Materials
- GCSE Design & Technology-Textiles
- GCSE Sociology
- BTEC First Award in Children's Play Learning and Development (Child Development)
- BTEC Tech Award in Health and Social Care
- Sport-NCFE Level 1/2 Technical Award in Health & Fitness
- Cambridge National in Enterprise and Marketing (Business Studies)
- Cambridge National in Creative iMedia

Remember, you must select a total of 3 choices, one of which **must** be a **mandatory** subject, at least one from the top yellow box.

How do I make my choices?

You need to choose your 3 subjects, one of which **must** be from the **mandatory subjects**. So for example, you could choose the following:

1 **mandatory** subject
2 **free choice** subjects = Total 3 choices

2 **mandatory** subjects
1 **free choice** subject = Total 3 choices

3 **mandatory** subjects
0 **free choice** subjects = Total 3 choices

You also need to make 3 reserve choices.

We cannot guarantee your first choice but will do our best to give you these.

Choices will commence in Summer 2024.

Students will **not** be able to change these without a very good reason.

Groups will be locked with no changes after Summer 2024.

If you have any questions, please speak to your form tutor, Mrs White, Mr Horner or Mr Rowe.



Questions to Consider

Which subjects do you enjoy and why?

What would you like to do in the future?



What are you interested in?

What do you need to find out to help make your choices?

GCSE English Language

Course outline and assessment

Reading: You will read and prepare a number of texts, including across both 19th century fiction and 20th and 21st century non-fiction. **Writing:** You will plan and write texts for a variety of purposes and audiences, focusing on both imaginative and transactional writing styles. You will be encouraged to use ideas raised from the reading texts from both the Language and the Literature courses. You will learn to craft sentences for effect. **Spoken Language:** You will continue to develop and strengthen your oracy skills through speeches, presentations and group discussions. There are two English exams. Paper 1 focuses on 19th century fiction and imaginative writing, while Paper 2 focuses on 20th and 21st century non-fiction and transactional writing.

What will I learn/skills will I develop?

- How to work out what a text is actually trying to say
- How to analyse the language and structure of a text
- How to evaluate texts
- How to compare texts
- How to write in different styles for a range of imaginative and transactional texts



What subjects does it link to?

- History
- Sociology
- Media studies

What opportunities does this give me?

- Journalist
- Writer
- Teacher
- Lawyer
- Editor
- Advertising



GCSE English Literature

Course outline and assessment

You will learn how to show that you understand the ways writers use ideas, themes and settings in texts to affect readers. You will develop further awareness of some contexts of texts and of how this influences their meanings for contemporary and modern readers. You will practise skills in how to convey ideas clearly and appropriately by developing your own critical style. There are TWO English Literature examinations: Paper 1: Shakespeare and Post-1914 Literature You will study *Romeo and Juliet* by William Shakespeare and *An Inspector Calls*, by JB Priestley. The exam is 1 hour and 45 minutes and is a closed book exam. Paper 2: 19th-century Novel and Poetry since 1789 You will study a 19th-century novel (either *Dr Jekyll and Mr Hyde* or *A Christmas Carol*) and a collection of 15 poems from the Pearson Poetry Anthology. The exam is 2 hours and 15 minutes and is a closed book exam.

What will I learn/skills will I develop?

- How literature has developed over time
- How context can affect our understanding of a text
- How to compare texts
- How writers present their own ideas through a text

What subjects does it link to?

- History
- Sociology
- Law
- Media studies
- Psychology
- Drama

What opportunities does this give me?

- Teacher
- Lawyer
- Politician
- Writer



GCSE Maths

Course outline and assessment

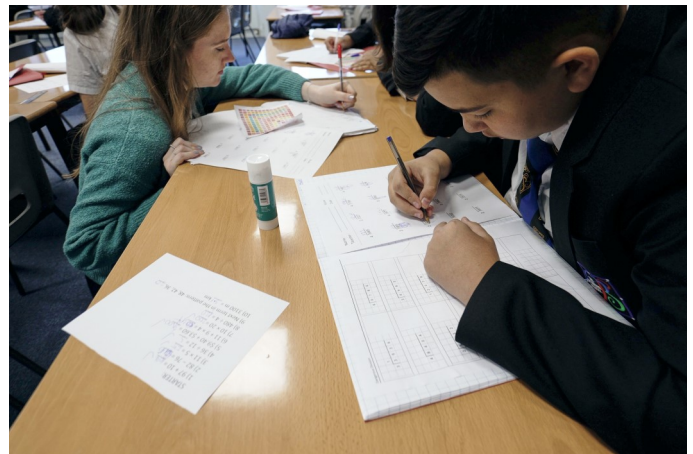
There are tiered levels of entry and each of these is assessed by a non calculator and two calculator papers. All papers are 90 mins long. The equivalent of grades 1 to 5 are available at Foundation tier. The equivalent of grades 5 to 9 are available at higher tier. 25% of the Foundation Tier assesses the problem solving elements of mathematics. 30% of the Higher Tier assesses the problem solving elements of mathematics

What will I learn/skills will I develop?

- Logical thinking
- Planning skills
- Understand how to make good choices

What subjects does it link to?

Geography
 Biology, Physics & Chemistry
 Psychology
 Sociology
 Business
 All Engineering
 Design Technology
 Finance
 Computer Science



What opportunities does this give me?

- Scientist
- Lawyer
- Engineer
- Astronomy
- Architect
- Banking
- Environmental science
- Forensics
- Sports coach
- Web design



GCSE Combined science (Trilogy)

CORE SUBJECT

Course outline and assessment

GCSE Combined Science: Trilogy has something to offer for every student. It is interesting and relevant to all types of students. The Biology, Chemistry and Physics content is presented clearly, in a logical teaching order and there are plenty of opportunities for skills development throughout the course in the form of required practicals. The course will also give you the option to progress to A-levels and BTEC courses in science or other subjects.

What will I learn/skills will I develop?

- Biology topics covered include: Cell Biology, Infection and response, Bioenergetics and Ecology.
- Chemistry topics covered include: Atomic structure and the periodic table, Bonding, structure, and the properties of matter.
- Physics topics covered include: Electricity, Particle model of matter and Atomic structure.

You will be trained to observe, experiment and test out ideas and think about them like a scientist.

What subjects does it link to?

- English
- Maths
- Geography
- RE
- History

What opportunities does this give me?

Geneticist, Researcher, Science Teacher, Zoologists, Doctor, Nurse, Vet, Wildlife Biologists, Psychologist, Microbiologists, Lab Technician, Biochemists, Biophysicists, Medical Scientists, Medical Journalist, Forensics Crime Scene Investigator...



GCSE Religious Education

Course outline and assessment

We study the Eduqas Exam Board Course, with 3 exam papers. Paper 1 Relationships—Marriage, roles of men & women, Christian and Muslim views. Life and Death—Origins of the universe, Dominion, Stewardship, Sanctity of Life, Heaven, Hell, Afterlife. Good and Evil—Forgiveness, Free will, Justice, Death Penalty, Original Sin, Soul, Suffering. Human Rights—Prejudice and discrimination, People of conscience such as Martin Luther King and Mohammed Ali, Charity, Poverty. Paper 2 Christianity - beliefs and practices. Paper 3 Islam – Beliefs and Practices.

What will I learn/skills will I develop?

- Presenting an argument
- Comparing differing points of view
- Explaining differences in religious belief

What subjects does it link to?

- English
- History
- Health & Social Care
- Law
- Citizenship
- PSHE



What opportunities does this give me?

- Presenting ideas for job applications and interviews
- Law career
- University Applications



Physical Education

Course outline and assessment

You will have three hours of PE a fortnight in year 10 and four hours of PE a fortnight in year 11, where you will take part in a range of activities and sports over the course of the two years. There is an emphasis on gameplay and tactics within sports as well as leadership; including a unit of work that is specifically dedicated to sports leadership. Activities include: football, rugby, fitness, netball, hockey, cricket, rounders, softball, trampolining, badminton and athletics. You will be assessed practically against each activity criteria based on observations by your teacher, however these grades do not contribute towards a qualification.

What will I learn/skills will I develop?

- Knowledge of tactics and rules in a range of sports
- Knowledge of how you can keep fit and healthy
- Leadership skills

What subjects does it link to?

- Science
- Maths

What opportunities does this give me?

- Sports Coach
- Teacher
- Fitness Instructor
- Physiotherapist

What extra-curricular opportunities are offered?

- Half Termly Inter-House Competitions
- Sports Teams eg. football, cricket, athletics, rounders and netball
- After School Clubs eg. badminton, table tennis, basketball



GCSE French

Course outline and assessment

A GCSE in French opens doors to the entire French-speaking world. French is spoken by 500 million people in over 30 different countries, the majority in Africa. In a survey by the CBI, 49% of managers highlighted French as the most important language for their business. The course builds on language learning at Key Stage 3 and develops insight into the culture of the French-speaking world, as well as further exploration of vocabulary and understanding of grammar necessary for communication in a variety of situations, from talking with a friend or buying in a market, to closing a business deal. Assessment is through exams in listening, reading, writing and speaking, taken at the end of the course and each worth 25% of the GCSE.

What will I learn/skills will I develop?

- Cultural knowledge
- Grammatical structures
- Strategies to cope with unknown words
- Vocabulary recognition
- Interacting effectively in speech
- Literacy



What subjects does it link to?

- English Language
- Geography
- PSHE
- Sociology
- Science
- RE
- Computer Science (Programming)

What opportunities does this give me?

- Translation / Interpreting
- Teaching
- Engineering / Scientific Research
- Management / Marketing / Sales
- Customer Services
- Media
- Travel and Tourism
- Logistics/Logistics Management (ie haulage and transport)



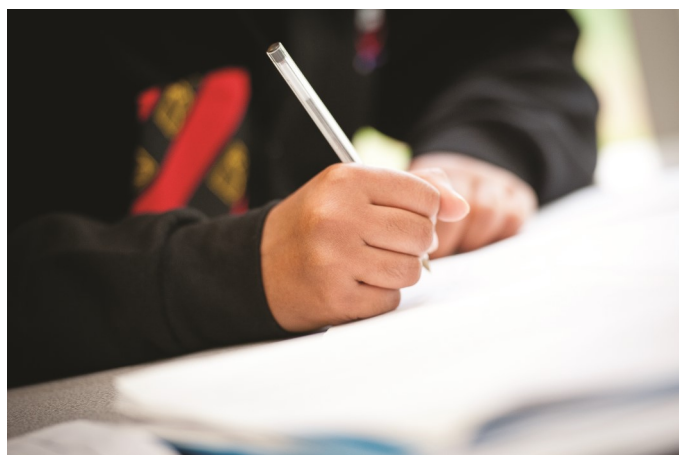
GCSE Spanish

Course outline and assessment

A GCSE in Spanish opens doors to the entire Spanish-speaking world. Spanish is spoken by 486 million people in over 20 different countries, the majority in South America. In a survey by the CBI, 37% of managers highlighted Spanish as the most important language for their business. The course builds on language learning at Key Stage 3 and develops insight into the culture of the Spanish-speaking world, as well as further exploration of vocabulary and understanding of grammar necessary for communication in a variety of situations, from talking with a friend or buying in a market, to closing a business deal. Assessment is through exams in listening, reading, writing and speaking, taken at the end of the course and each worth 25% of the GCSE.

What will I learn/skills will I develop?

- Cultural knowledge
- Grammatical structures
- Strategies to cope with unknown words
- Vocabulary recognition
- Interacting effectively in speech



What subjects does it link to?

- English Language
- Geography
- PSHE
- Sociology
- Science
- RE

What opportunities does this give me?

- Translation / Interpreting
- Teaching
- Engineering / Scientific Research
- Management / Marketing / Sales
- Customer Services
- Media
- Travel and Tourism



GCSE Geography

Course outline and assessment

EDUQAS GCSE Geography aims to enable learners to think ‘like a geographer’. Students will develop the ability to think creatively, by posing questions that relate to a geographical process and develop the ability to think scientifically by collecting and recording appropriate evidence from a range of sources, including fieldwork. They will also develop the ability to think independently by applying geographical knowledge, understanding, skills and approaches appropriately and creatively to real world contexts.

Students will be assessed through three exams at the end of year 11.

Paper 1 – Investigating geographical issues which includes Changing Economies, Changing Environments and Environmental Challenges.

Paper 2 – Problem Solving Geography

Paper 3 – Applied Fieldwork Enquiry

What will I learn/skills will I develop?

- Teamwork and leadership skills
- The ability to develop and communicate a reasoned argument
- Fieldwork skills – collect, process, analyse and communicate data.
- Geography is always in the news – you will learn to interpret, analyse and evaluate information that affects the world we live in.



What subjects does it link to?

- Sociology
- Maths-using data
- History
- Science

What opportunities does this give me?

- Teacher
- Town planning
- Weather forecaster
- Environmental lawyer
- Conservation
- Travel writer



GCSE History

Course outline and assessment

You will study four different topics from the Medieval era (500-1500), Early Modern era (1450-1700) and Modern era (1759-present)

1. Medicine in Britain c1250-present and The British sector of the Western Front, 1914-18: injuries, treatment and the trenches.
 - a. This is a thematic study where you will study key individuals, events and developments in medicine from all three eras defined above.
2. Early Elizabethan England, 1558-88.
 - a. This is a depth study of British history, allowing you to understand the key features of Elizabeth I's reign.
3. Period Study: The American West, c1835-1895.
 - a. This is a period study of American history, spanning 50 years, where you will study the history of Native Americans.
4. Modern depth study: Weimar and Nazi Germany, 1918-39.
 - a. This topic follows the aftermath of WWI in Germany, following the forced signing of the Treaty of Versailles, the creation of a new government, Weimar Republic, through the Great Depression, rise of Hitler and the Nazi Party, up to the outbreak of WWII.

What will I learn/skills will I develop?

- How to analyse the significance of world events
- How to analyse a range of sources to assess their usefulness
- How to write concisely, clearly and with a purpose to communicate your points and historical knowledge effectively.

What subjects does it link to?

- English Literature
- Religious Studies
- Geography
- Sociology

What opportunities does this give me?

- Journalist
- Human Resources Manager
- Teacher
- Solicitor
- Youth Worker



GCSE Triple Science:

Biology

Course outline and assessment

GCSE Biology has something to offer for every student. It is interesting and relevant to all types of students. The chemistry content is presented clearly, in a logical teaching order and there are plenty of opportunities for skills development throughout the course in the form of required practicals. The course will also give you the option to progress to A-levels and BTEC courses in science or other subjects. At the end of the course you will sit 2x 1hour 45 minute exams. The course is equivalent to 1 GCSE.

The exam papers students can sit are tiered; they are either foundation or higher exam papers. The tier is decided by the Head of Science, based on student data. A student that sits a foundation paper can achieve from a grade 1 to a grade 5 and a student that sits the higher paper can achieve from a grade 3 to a grade 9.

What will I learn/skills will I develop?

Biology topics covered include: Cell Biology, Organisation, Infection and response, Bioenergetics, Homeostasis and response, Inheritance variation and evolution and Ecology. You will be taught to carefully investigate, observe, experiment or test out ideas and think about biology building a deep understanding. This will involve talking about, reading and writing about biology plus the actual doing, as well as representing biology in its many forms both mathematically and visually through models.

Minimum Entry Requirement

Current Grade 3 & reference from your Science teacher

What subjects does it link to?

- English
- Maths
- Geography
- RE
- History

What opportunities does this give me?

Science Teacher, Medical Researcher, Lab Technician, Medical Journalist, Forensics Crime Scene Investigator, Microbiologist, Pharmaceutical sales, Environmental scientist, Nurse, Vet, Doctor, Physical Therapist...



GCSE Triple Science: Chemistry

MANDATORY SUBJECT

Course outline and assessment

GCSE Chemistry has something to offer for every student. It is interesting and relevant to all types of students. The chemistry content is presented clearly, in a logical teaching order and there are plenty of opportunities for skills development throughout the course in the form of required practicals. The course will also give you the option to progress to A-levels and BTEC courses in science or other subjects. At the end of the course you will sit 2x 1hour 45 minute exams. The course is equivalent to 1 GCSE.

The exam papers students can sit are tiered; they are either foundation or higher exam papers. The tier is decided by the Head of Science, based on student data. A student that sits a foundation paper can achieve from a grade 1 to a grade 5 and a student that sits the higher paper can achieve from a grade 3 to a grade 9.

What will I learn/skills will I develop?

Chemistry topics covered include: Atomic structure and the periodic table, Bonding, structure, and the properties of matter and Quantitative chemistry, You will be taught to carefully investigate, observe, experiment or test out ideas and think about chemistry building a deep understanding. This will involve talking about, reading and writing about chemistry plus the actual doing, as well as representing chemistry in its many forms both mathematically and visually through models.

Minimum Entry Requirement

Current Grade 3 &
reference from your
Science teacher

What subjects does it link to?

- English
- Maths
- Geography
- RE
- History

What opportunities does this give me?

Science Teacher, Medical Researcher, Lab Technician, Medical Journalist, Forensics Crime Scene Investigator, Geochemist, Hazardous Waste Chemist, Materials Scientist, Pharmacologist, Toxicologist...



GCSE Triple Science: Physics

MANDATORY SUBJECT

Course outline and assessment

GCSE Physics has something to offer for every student. It is interesting and relevant to all types of students. The physics content is presented clearly, in a logical teaching order and there are plenty of opportunities for skills development throughout the course in the form of required practicals. The course will also give you the option to progress to A-levels and BTEC courses in science or other subjects. The course is equivalent to 1 GCSE.

The exam papers students can sit are tiered; they are either foundation or higher exam papers. The tier is decided by the Head of Science, based on student data. A student that sits a foundation paper can achieve from a grade 1 to a grade 5 and a student that sits the higher paper can achieve from a grade 3 to a grade 9.

What will I learn/skills will I develop?

Physics topics covered: 1. Energy, 2. Electricity, 3. Particle model of matter, 4. Atomic structure, 5. Forces, 6. Waves and 7. Magnetism and electromagnetism and 9. Space.

You will be taught to carefully investigate, observe, experiment or test out ideas and think about physics building a deep understanding. This will involve talking about, reading and writing about physics plus the actual doing, as well as representing physics in its many forms both mathematically and visually through models.

Minimum Entry Requirement

Current Grade 3 & reference from your Science teacher

What subjects does it link to?

- English
- Maths
- Geography
- RE
- History

What opportunities does this give me?

Science Teacher, Astronomer, Sound Engineer, Accelerator Operator, Applications Engineer, Data Analyst, Design Engineer, IT Consultant, Laser Engineer, Lab Technician, Nuclear Power Plant operative, Meteorologist...



GCSE Computer Science

Course outline and assessment

Year 10 will focus on Component 02: Computational thinking, algorithms and programming. This is the more practical and logical elements of computer science, programming, algorithmic thinking and logic. You will apply knowledge and understanding gained in KS3 to develop skills and understanding in computational thinking: algorithms, programming techniques, producing robust programs, computational logic and translators.

Year 11 will focus on Component 01: Computer Systems. What makes up a computer in terms of both hardware and software. You will gain a deeper understanding of the central processing unit (CPU), computer memory and storage, data representation, wired and wireless networks, network topologies, system security and system software.

What will I learn/skills will I develop?

- Practical programming skills
- Interpreting and completing algorithms
- Elements of PC building

Minimum Entry
Requirement

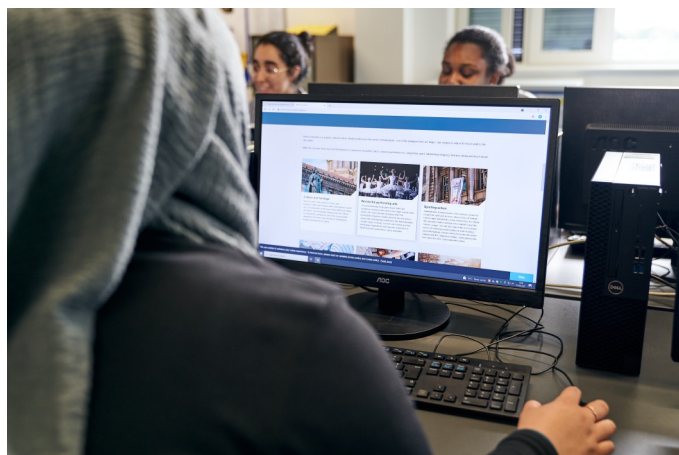
Current Grade 3 in
Maths

What subjects does it link to?

- Programming
- Algorithms
- System Architecture
- Data Representation
- Maths
- Physics

What opportunities does this give me?

As well as being able to seek Computer Science related positions, completion of a GCSE in Computer Science will enable you to progress to a Level 3 Computer Science related course, such as: A Level Computer Science, BTEC IT or CTEC IT.



GCSE Art and Design

Course outline and assessment

GCSE art and design is a practical based course that can lead to many employment routes within the creative and design based industries. It also provides you with skills that are transferable to a multitude of jobs outside the creative sector.

On the course, you will undertake a number of different activities all of which will have links to the creative industries. Through each activity students will develop their creative skills in a variety of contexts and build up a portfolio of work, covering the following units:

Unit 1: Portfolio of Work 60%

Unit 2: Externally Set Task 40%

The externally set task is issued in January of year 11. Students use the skills and knowledge they have acquired from unit 1 to create a final project based on an externally set theme.

What will I learn/skills will I develop?

This course gives you the freedom to display your artistic talents, whilst developing the practical skills and knowledge you need to progress as an artist or designer. Over 2 years you will develop a personal portfolio, which involves creating work through a range of activities, based on different themes. You will be given the opportunity to refine and develop your creative skills, as well as trying new things such as working with clay or digital media.

As you progress you will be encouraged to think creatively and begin to work with more independence. As a result of this, the Art work produced in year 11 is generally of a very high standard, with original and innovative forms of Art being created by our students.

What subjects does it link to?

Art and Design links well to all other subjects and as it develops your ability to think creatively, make sense of and interpret the world around you, visually communicate your ideas, analyse meanings and develop your fine motor skills.

"The skills I learned studying fine arts in college are invaluable to me now as a physician. I saw the impact art education had on my approach to medicine, and I wanted to recreate that experience for others in the field," said Dr Jaclyn Gurwin, Ophthalmologist.

What opportunities does this give me?

A growing number of Britain's jobs are now within the creative fields and employers within most organizations look for people who are able think and work creatively. Choosing an Art and Design course will not only offer you a chance to improve your technical skills but will also teach you to develop your ideas creatively.

There are a number of routes for progression including courses in Fine Art, Graphic Design, Illustration and Photography, leading to jobs within the Arts, Design and Media industries.



BTEC Level 1/Level 2 Tech Award in Music Practice

Course outline and assessment

As an industry, music covers and includes a phenomenal amount of different jobs. This BTEC qualification appeals to a wide range of interests as some students have a passion in performing, others may prefer to learn how to become a composer/song-writer whereas some will want to focus on using computer software to sequence and mix a track. The course has two internally assessed components and one externally assessed component (there is no written exam).

Component 1: Exploring Music Products and Styles

Component 2: Music Skills Development

Component 3: Responding to a Music Brief

The three components focus on the assessment of applied knowledge, skills and practices. These are all essential to developing a basis for progression and therefore learners need to achieve all components in order to achieve the qualification. The three components in the qualification give learners the opportunity to develop broad knowledge and understanding of the music sector, and specialist skills such as applying musical knowledge to music performance, music creation and music production at Levels 1 and 2.

What will I learn/skills will I develop?

You will need to develop Music Technology, lyric writing and instrumental skills in order to help you produce your composition coursework. Music is considered one of the most employable subjects because of the range of skills covered, including self-management, communication and presentation, which are vital to any future

What subjects does it link to?

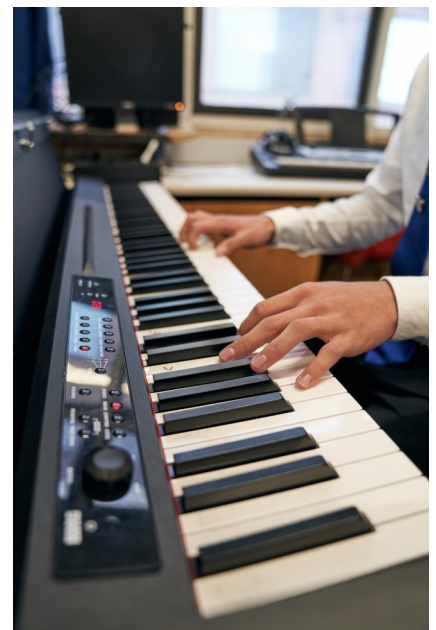
This qualification is designed to be taken as part of a broad and balanced curriculum at Key Stage 4. It will go particularly well alongside GCSEs in EBacc subjects (including computer science), non-core GCSEs (e.g. drama, media) and/or other Technical Awards (e.g. BTEC IT) to provide both curriculum breadth and the skills you need to make informed choices about study post-16.

What opportunities does this give me?

Study of the qualification as part of Key Stage 4 will help learners to make more informed choices to further their learning, either generally or in this sector. The choices that learners can make post-16 will depend on their overall level of attainment and their performance in qualification.

Learners who achieve at level 1 across their KS4 learning might consider progression to: Study at Level 2 post 16 in a range of technical routes designed to lead to work, employment, apprenticeships or further study.

Learners who generally achieve at Level 2 across their Key Stage 4 learning might consider progression to: A levels as preparation for entry to higher education in a range of subjects. Study of a vocational qualification at Level 3, such as a BTEC National in Music or BTEC National in Music Technology, which prepares learners to enter employment or apprenticeships or to move to higher education by studying a degree in the music sector.



GCSE Food Preparation and Nutrition-EDUCAS

Course outline and assessment

Component 1: Principles of Food Preparation and Nutrition

Written examination: 1 hour 45 minutes; 50% of qualification

Component 2: Food Preparation and Nutrition in Action- Non-examination assessment: internally assessed, externally moderated

Assessment 1: 8 hours; Assessment 2: 12 hours; 50% of qualification

Food Preparation and Nutrition aims to create confident, independent cooks who have a wide range of knowledge surrounding food. Component 1 aims to give students the knowledge to understand the science behind food, where food comes from and the importance of a healthy, balanced diet. Component 2 gives students the opportunity to create and cook their own choices of dish where they can showcase the range of practical skills they have learnt throughout the course. Alongside the practical element of component 2, students will be expected to carry out independent, written course work.

What will I learn/skills will I develop?

During theory lessons, students will learn about the following components of food:

1. Food commodities
2. Principles of nutrition
3. Diet and good health
4. The science of food
5. Where food comes from
6. Cooking and food preparation.

During practical's, students will learn some new food preparation techniques and practise those to develop cooking skills further. A range of dishes will be taught to develop understanding of how to achieve a nutritious and balanced diet.

What subjects does it link to?

- This can link in nicely with Sport Science as it teaches students how to be healthy and the functions of different nutrients in the body.
- The course also looks at the scientific processes of different types of food and so has links with Science.
- There is cross curriculum with PSHE as it teaches vital life skills.

What opportunities does this give me?

The course will provide you with opportunities to pursue a career in the hospitality and catering sector which is vast e.g. Education, hospitals, hotels, restaurants etc. Will provide you with practical life skills in the knowledge and preparation of food. These are transferable skills which you will then be able to use in everyday life. You will have the tools to be able to make a range of dishes and learn the function of many food ingredients.



GCSE Design & Technology- Resistant Materials

Course outline and assessment

GCSE Design and Technology offers pupils the chance to learn about modern technologies and materials through an iterative design process. Pupils will design and make prototypes to solve relevant problems, showing consideration for user needs. This GCSE is a 2 year course, pupils will be assessed by one exam paper and an NEA (non-examined assessment) project. Both paper and NEA will assess core technical principles, specialist technical principles (Timber based materials) and design and making principles.

Paper 1: Written exam (2 hours) 100 marks – 50% of GCSE grade

Non-examined assessment (NEA): Design and make task (30-35 hours) 100 marks – 50% of GCSE grade

What will I learn/skills will I develop?

Pupils will develop skills to solve relevant design problems through the three core principles:

+Core technical principles: New and emerging technologies, mechanical devices, materials and their working properties, energy generation and storage.

+Specialist technical principles: Developing a wider knowledge for using Timber based materials.

+Design and making principles: Understanding user needs. Focusing on practical skills, working with materials and using specialist tools and equipment.

What subjects does it link to?

This GCSE allows you to solve relevant problems by applying your knowledge from Maths and Science, developing a range of transferable skills applicable to many careers.

The practical element and sustainability issues that you will study enable you to develop life skills and make more informed decisions as an adult consumer.

What opportunities does this give me?

A pass in this subject will enable you to progress either directly to employment, or onto further qualifications. The subject can be studied at AS and A2 level and you could go on to focus on product design, fashion design, engineering, architecture and many more exciting careers! Many British Universities offer foundation degree courses in Product design and engineering.

***Please note, if you choose GCSE Design & Technology Resistant Materials, you cannot choose GCSE Design & Technology Textiles as well.**



GCSE Design and Technology-Textiles

FREE CHOICE

Course outline and assessment

GCSE Design and Technology offers pupils the chance to learn about modern technologies and materials through an iterative design process. Pupils will design and make prototypes to solve relevant problems, showing consideration for user needs. This GCSE is a 2 year course, pupils will be assessed by one exam paper and an NEA (non-examined assessment) project. Both paper and NEA will assess core technical principles, specialist technical principles (Textile based materials) and design and making principles.

Paper 1: Written exam (2 hours) 100 marks – 50% of GCSE grade

Non-examined assessment (NEA): Design and make task (30-35 hours) 100 marks – 50% of GCSE grade

What will I learn/skills will I develop?

Pupils will develop skills to solve relevant design problems through the three core principles:

+Core technical principles: New and emerging technologies, mechanical devices, materials and their working properties, energy generation and storage.

+Specialist technical principles: Developing a wider knowledge for using Textile based materials.

+Design and making principles: Understanding user needs. Focusing on practical skills, working with materials and using specialist tools and equipment.



What subjects does it link to?

This GCSE allows you to solve relevant problems by applying your knowledge from Maths and Science, developing a range of transferable skills applicable to many careers. It also links to the creative subject of Art.

The practical element and sustainability issues that you will study enable you to develop life skills and make more informed decisions as an adult consumer.



What opportunities does this give me?

A pass in this subject will enable you to progress either directly to employment, or onto further qualifications. The subject can be studied at AS and A2 level and you could go on to focus on product design, fashion design, Textile Design, Costume Design and many more exciting careers! Many British Universities offer foundation degree courses in Fashion, Textiles and Product Design.

***Please note, if you choose GCSE Design & Technology Textiles, you **cannot** choose GCSE Design & Technology Resistant Materials as well.**



GCSE Sociology

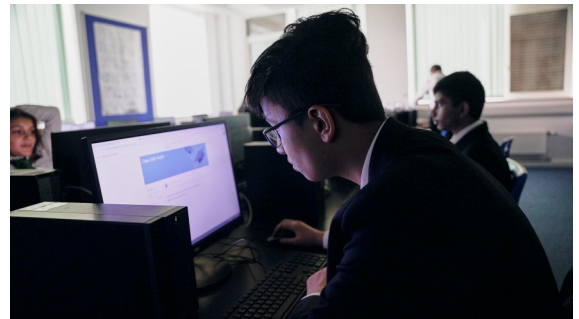
Course outline and assessment

Sociology is about Britain today, the different social groups within society, the rich diversity and inequalities that exist. Sociology encourages students to be reflective about our experiences and looking critically at information: Students will study the following modules:

- Family
- Education
- Research Methods
- Crime and Deviance
- Social Stratification

What will I learn/skills will I develop?

- Critically analyse the news
- Evaluate different perspectives of society
- Cultural diversity
- Inequality



What subjects does it link to?

- History
- Geography
- English
- Media Studies



What opportunities does this give me?

- Police
- Social Work
- Teacher
- Research
- Politics



BTEC First Award in Children's Play Learning and Development (Child Development)

Course outline and assessment

In year 10 students will study two components, children's growth and development and learning through play. The first component will develop students' knowledge and understanding of children's growth and development across five areas of development – physical, intellectual, and cognitive, communication and language, social and emotional. The second component will develop an understanding of how play activities can influence children's learning between the ages of birth and five years old.

In year 11 there is one external assessment. Component 3 builds directly on Components 1 and 2. Supporting Children to Play, Learn and Develop students will demonstrate their knowledge and understanding of child development. They will consider how individual circumstances across the five areas of development affect a child's ability or capacity to learn through play and meet expected development milestones.

What will I learn/skills will I develop?

- Independent learning
- Planning
- Work-place skills
- Team-work
- Presenting information

What subjects does it link to?

- Science
- P.E
- Maths
- English



What opportunities does this give me?

- Teacher
- Teaching Assistant
- Social Worker
- Nursery Assistant



BTEC Tech Award in Health and Social Care

FREE CHOICE

Course outline and assessment

Students will study two components in year 10. Human Life Span Development and Health and Social Care Services and Values. Students will explore different aspects of growth and development and the factors that can affect this across the life stages. They will explore the different events that can impact on individuals' Physical, Intellectual, Emotional, and Social (PIES) development and how

In year 11 there is one external assessment that builds on the two components studied in year 10. This component requires learners to study factors that affect health and wellbeing, physiological and lifestyle indicators, and person-centred approaches so that actions can be taken to improve health and wellbeing.

What will I learn/skills will I develop?

- Interpreting data
- Planning
- Application of care values
- Applying knowledge to assess people's health and wellbeing



What subjects does it link to?

- Science
- Sociology
- P.E
- Maths
- English



What opportunities does this give me?

- Doctor
- Pharmacist
- Nurse
- Social Worker
- Counsellor



Sport-NCFE Level 1/2 Technical Award in Health & Fitness

Course outline and assessment

This course is for people who have an interest in sport, health and fitness. Lessons are mainly classroom based with some practical activities.

You will learn about the body, types of fitness, training, fitness testing, lifestyle, and goal setting. You will also learn how to create and deliver an exercise programme; it will help you to understand how to specifically improve someone's health and fitness.

You will have two assessments in Year 11: a piece of coursework worth 60% of your overall mark and an exam worth 40% of your overall mark.

What will I learn/skills will I develop?

- How your body works during exercise.
- How to test someone's health and fitness.
- How to improve an individual's fitness.

What subjects does it link to?

- Science

What opportunities does this give me?

- Sports Coach
- PE Teacher
- Fitness Instructor
- Physiotherapist
- Personal Trainer



Cambridge National in Enterprise and Marketing (Business Studies)

Course outline and assessment

This subject gives you the practical skills and applied knowledge you'll need in business. Practical elements build on theoretical knowledge so that you can put your learning into practice while also developing valuable transferable skills. You will explore the techniques businesses use to understand their market and develop products, investigate what makes a product viable and understand how businesses attract and retain customers. There are three units in total, RO67; Enterprise and Marketing Concepts, RO68; Design a Business Proposal and RO69; Market and Pitch a Business Proposal. Two units are assessed through coursework and one unit through an exam. This course leads to the equivalent of a GCSE award of a grade L1P - L2D*.

What will I learn/skills will I develop?

- Financial management skills
- Spreadsheet
- Creating charts
- Presentation skills
- Public speaking skills

What subjects does it link to?

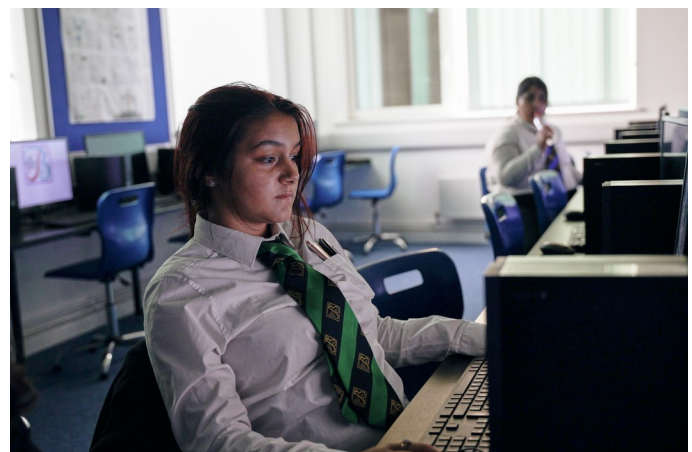
- Enterprise
- Data Modelling 1
- Creative iMedia
- Maths



What opportunities does this give me?

This qualification provides a broad and solid foundation for employment or further study of various aspects of Business. It supports progress to further study, including:

- Level 3 BTEC in Business
- Level 3 CTECS in Business
- A level Business



Cambridge National in Creative iMedia

FREE CHOICE

Course outline and assessment

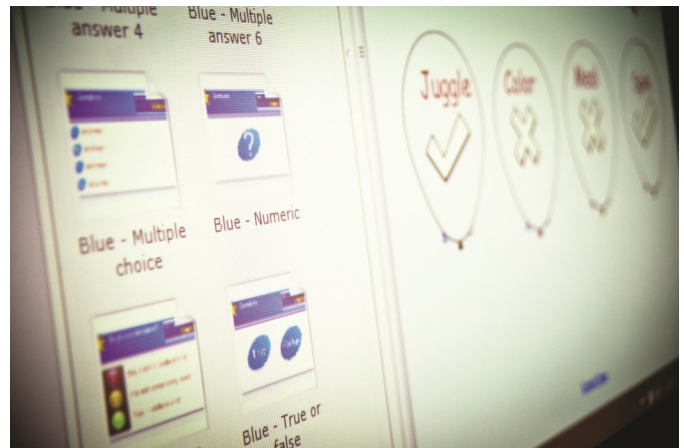
You will learn different skills and techniques that will make you a more capable IT user. You will develop the knowledge, understanding and skills needed to design and make, effective digital products for others to use. You will cover units covering Creative iMedia in the media industry, Visual Identity and Digital Graphics, and Interactive Digital Media. You will use a variety of different software to complete your studies, these include online software, Adobe Photoshop and Adobe Fireworks. Completion of one externally assessed element as well as two controlled assessed elements. This leads to the equivalent of one GCSE (9-1) of a grade L1P to L2D*.

What will I learn/skills will I develop?

- Graphics design, editing and creation
- Website design and creation
- Interactive multimedia design and creation
- Video creation and editing
- Animation creation and editing
- Development of pre-production documents

What subjects does it link to?

- Digital Graphics 1 and 2
- Website Development
- Art
- Business



What opportunities does this give me?

This qualification provides a broad and solid foundation for employment or further study of various aspects of creative computing, such as graphic design, web design, animation design and interactive media. It supports progress to further study, including:

- Level 3 BTEC Creative Digital Media Production
- Level 3 BTEC IT
- Level 3 CTEC IT
- Level 3 CTEC Digital Media



Notes Page

Notes from options interview:

Questions to ask subject teachers:

Exam Board and Codes

Qualification	Exam Board	Course Code	QAN
English Language	Edexcel	1ENo	601/4836/6
English Literature	Edexcel	1ETo	601/4789/1
Maths	AQA	8300	601/4608/4
Science Trilogy	AQA	8465	601/8758/X
Computing Science	OCR	J277	601/8355/X
French	Pearson	1FR1	
Geography	Eduqas	C112QS	601/8153/9
History	Pearson	1H1A	601/8092/4
Triple Science-Biology	AQA	8461	601/8752/9
Chemistry		8462	601/8757/8
Physics		8463	601/8751/7
Spanish	Pearson	1SP1	
Art & Design	AQA	8200	601/8088/2
Enterprise & Marketing (Business Studies)	OCR	J837	603/7093/2
Childs Play, Learn & Development (Child Development)	Edexcel	21486E	600/7865/0
Resistant Materials (Design & Technology)	AQA	8522	603/0984/2
Food Prep & Nutrition	Eduqas	C560P1	601/8093/6
Creative iMedia	OCR	J834	603/7090/7
Music	Pearson	BGSB7	600/9818/8
Religious Studies	WJEC	C120P3	601/8879/0
Sociology	AQA	4192	500/4436/9
Sport - Health & Fitness	NCFE	60370075	603/7007/5
Health & Social Care	Edexcel	31490H	603/0395/5
Textiles	AQA	8522	603/0984/2
Hair and Beauty	ABC		L1 Cert-500/6347/9 L1 Diploma-500/6346/7
Motor Vehicle	ABC		500/4220/8