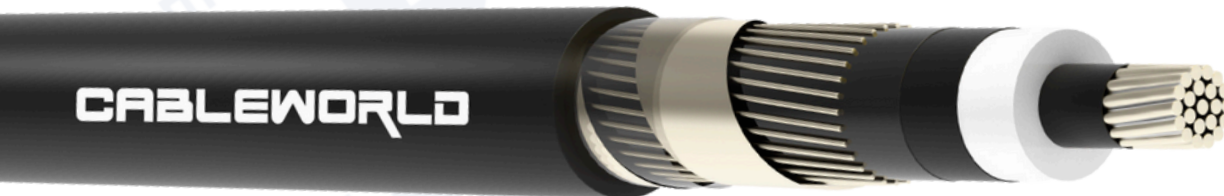
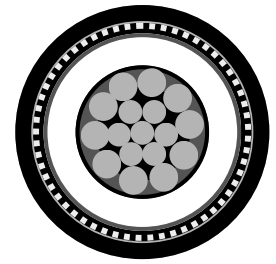




UKPN Single Core Unarmoured Aluminium Conductors - 19/33 (36)kV

Medium Voltage DNO Aluminium Power Cable



DESCRIPTION

Conductor: Stranded or Solid Aluminium Conductor, **Conductor Screen:** Fully bonded semi-conducting compound, **Insulation:** XLPE (Cross-Linked Polyethylene), **Insulation Screen:** Semi-conductive compound, **Screen:** Aluminium Wires, **Separator:** Water Swellable Tape in Open Helix, **Sheath:** MDPE (Medium Density Polyethylene) - colour BLACK.

APPLICATION

Medium voltage aluminium power cable approved to UK Power Networks (UKPN) specifications, manufactured by G81-authorized suppliers for connecting the existing grid to new sub-main developments.

TECHNICAL DATA

| | |
|-------------------------------|--------------|
| Voltage Rating (Uo/U): | 19/33 (36)kV |
| Temp. Rating: | 0°C to +90°C |
| Standards/Approvals: | BS 7870-4.10 |

TDS 1 OF 2



UKPN Single Core Unarmoured Aluminium Conductors - 19/33 (36)kV

Medium Voltage DNO Aluminium Power Cable

| DIMENSIONS | | | | | | |
|--------------|------------------------------|---------------------------------|------------|-------------------|-------------------|----------------------|
| NO. OF CORES | NOMINAL CROSS SECTIONAL AREA | NOMINAL AREA OF METALLIC SCREEN | NOMINAL OD | NOM. CABLE WEIGHT | MIN. BEND. RADIUS | MAX. PULLING TENSION |
| | mm ² | mm ² | mm | Kg/Km | mm | mm |
| 1 | 300 | 82 | 46.5 | 2060 | 940 | 9000 |
| 1 | 500 | 82 | 53.5 | 2820 | 1100 | 15000 |
| 1 | 630 | 82 | 57.5 | 3610 | 1120 | 18900 |

ALL FIGURES QUOTED ARE APPROXIMATE

| ELECTRICAL CHARACTERISTICS | | | | | | | | | |
|------------------------------|-----------------------------------|---|-------------------|-------------|-----------------------------------|---|-----------------------------|-------|-----|
| NOMINAL CROSS SECTIONAL AREA | MAX. DC RES. OF CONDUCTOR AT 20°C | MAX. AC RESISTANCE OF CONDUCTOR AT 20°C | REACTANCE AT 50HZ | CAPACITANCE | 1 SECOND S.C. RATING OF CONDUCTOR | 1 SECOND S.C. RATING OF METALLIC SCREEN | CURRENT CARRYING CAPACITY A | | |
| mm ² | Ω/Km | Ω/Km | Ω/Km | µf/Km | kA | kA | BURIED | DUCTS | AIR |
| 300 | 0.1000 | 0.129 | 0.114 | 0.25 | 28.3 | 8.3 | 475 | 380 | 580 |
| 500 | 0.0605 | 0.0796 | 0.106 | 0.33 | 47.2 | 8.3 | 610 | 488 | 790 |
| 630 | 0.0469 | 0.0628 | 0.102 | 0.34 | 59.5 | 8.3 | 690 | 552 | 920 |

ALL FIGURES QUOTED ARE APPROXIMATE

E&OE. Manufacturers reserve the right to amend the specification without prior notice.

TDS 2 OF 2

Head Office (Bolton): • Tel: +44 (0) 1942 840 200 • E-Mail: sales@cable-world.co.uk

London Branch: • Tel: +44 (0) 203 960 9389 • E-Mail: sales.london@cable-world.co.uk



Conf. No. 1006
000001-2015