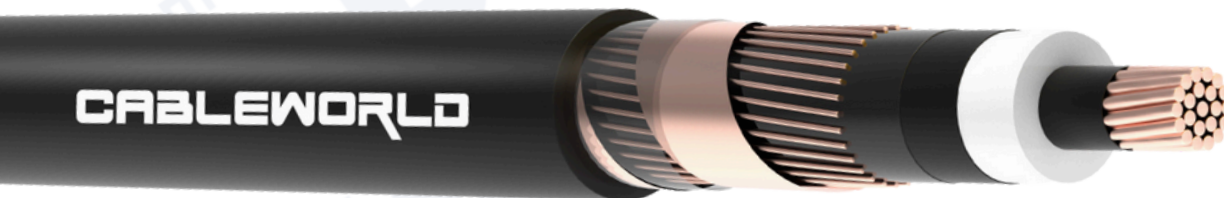
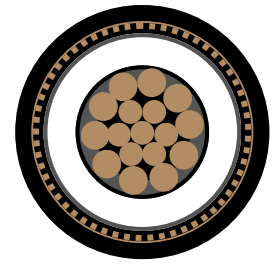




NGED Approved Single Core Unarmoured Copper Conductor - 19/33 (36)kV

Medium Voltage DNO Copper Power Cable



DESCRIPTION

Conductor: Class 2 Stranded Copper Conductor, **Conductor Screen:** Fully bonded semi-conducting compound, **Insulation:** XLPE (Cross-Linked Polyethylene), **Insulation Screen:** Semi-conductive compound (Bonded), **Longitudinal Water Blocking:** Semi-conducting water blocking tape, **Screen:** Copper Wires and Equalising Copper Tape, **Longitudinal Water Blocking:** Water blocking tape, **Sheath:** MDPE (Medium Density Polyethylene) - colour BLACK.

APPLICATION

Medium voltage copper power cable approved to National Grid Energy Distribution (NGED) specifications, manufactured by G81-compliant suppliers for connecting existing grid infrastructure to new sub-main developments.

TECHNICAL DATA

Voltage Rating (Uo/U):	19/33 (36)kV
Temp. Rating:	0°C to +90°C
Min. Bend. Radius:	20 x OD
Standards/Approvals:	BS 7870-4.10, WPD EE82/3, IEC 60228

TDS 1 OF 2



NGED Approved Single Core Unarmoured Copper Conductor - 19/33 (36)kV

Medium Voltage DNO Copper Power Cable

DIMENSIONS							
NO. OF CORES	NOMINAL CROSS SECTIONAL AREA	NOMINAL AREA OF METALLIC SCREEN	NOMINAL DIA. OF CONDUCTOR	NOMINAL INSULATION THICKNESS	NOMINAL SHEATH THICKNESS	NOMINAL OD	NOMINAL WEIGHT
	mm ²	mm ²	mm	mm	mm	mm	Kg/Km
1	185	35	15.9	8.0	2.20	42.6	3160
1	300	35	20.6	8.0	2.40	47.6	4510
1	400	35	23.3	8.0	2.50	50.4	5500
1	630	35	30.2	8.0	2.70	57.8	8070
1	800	35	35.0	8.0	2.80	63.0	9780

ALL FIGURES QUOTED ARE APPROXIMATE

ELECTRICAL CHARACTERISTICS					
NOMINAL CROSS SECTIONAL AREA	MAX. DC RES. OF CONDUCTOR AT 20°C	REACTANCE	CAPACITANCE	CURRENT CARRYING CAPACITY A	
mm ²	Ω/Km	Ω/Km	µf/Km	DIRECT BURIED - WINTER	DIRECT BURIED - SUMMER
185	0.0991	0.121	0.211	476	402
300	0.0601	0.112	0.253	620	524
400	0.047	0.108	0.276	694	586
630	0.0283	0.100	0.338	839	709
800	0.0221	0.096	0.380	922	780

ALL FIGURES QUOTED ARE APPROXIMATE

E&OE. Manufacturers reserve the right to amend the specification without prior notice.

TDS 2 OF 2

Head Office (Bolton): • Tel: +44 (0) 1942 840 200 • E-Mail: sales@cable-world.co.uk

London Branch: • Tel: +44 (0) 203 960 9389 • E-Mail: sales.london@cable-world.co.uk



Conf. No. 1006
000001-2015