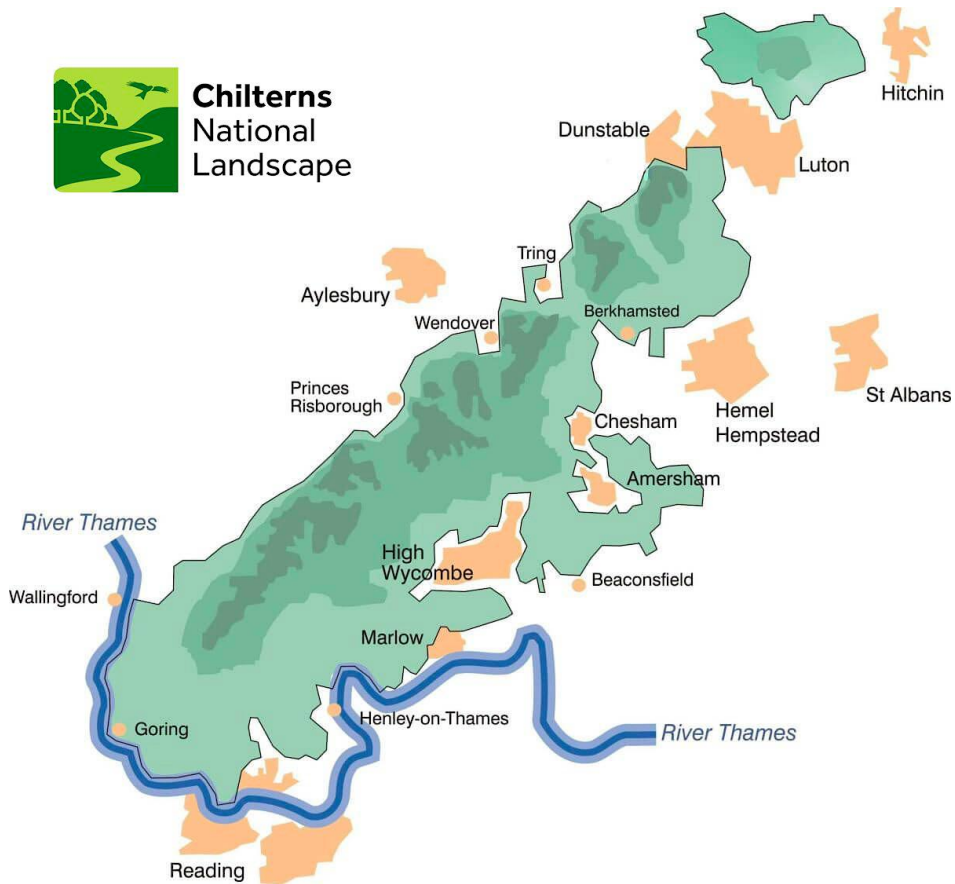






Chilterns National Landscape







A young boy with dark hair, wearing a blue quilted jacket, is leaning over a wooden railing. He is looking down and to the right with a focused expression. The background is a lush green landscape with trees and a chalk stream. Other people are visible in the background, but they are out of focus.

There are only about 260 chalk streams in the whole world...

The River Lea is one of them.



An aerial photograph of a rolling green landscape with many trees in autumn colors. The text is overlaid on the image.

Working together for people, nature and climate



Priority Habitats

 **343,209Ha**

Area

Pie chart

Chalk & Limestone Grassland

 **55,779Ha**

Last update: 1 minute ago

Deciduous Woodland

 **210,302Ha**

Area

Pie chart

SSSI Area

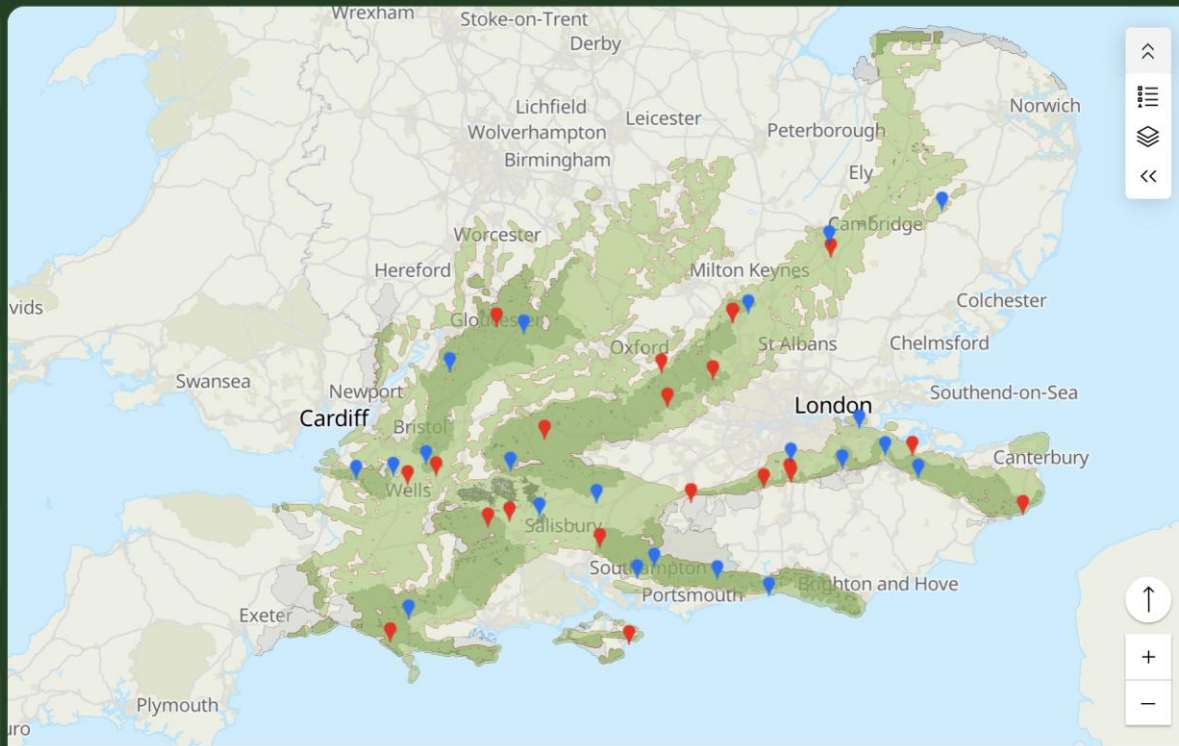
 **122,174Ha**

Area

SSSI Condition

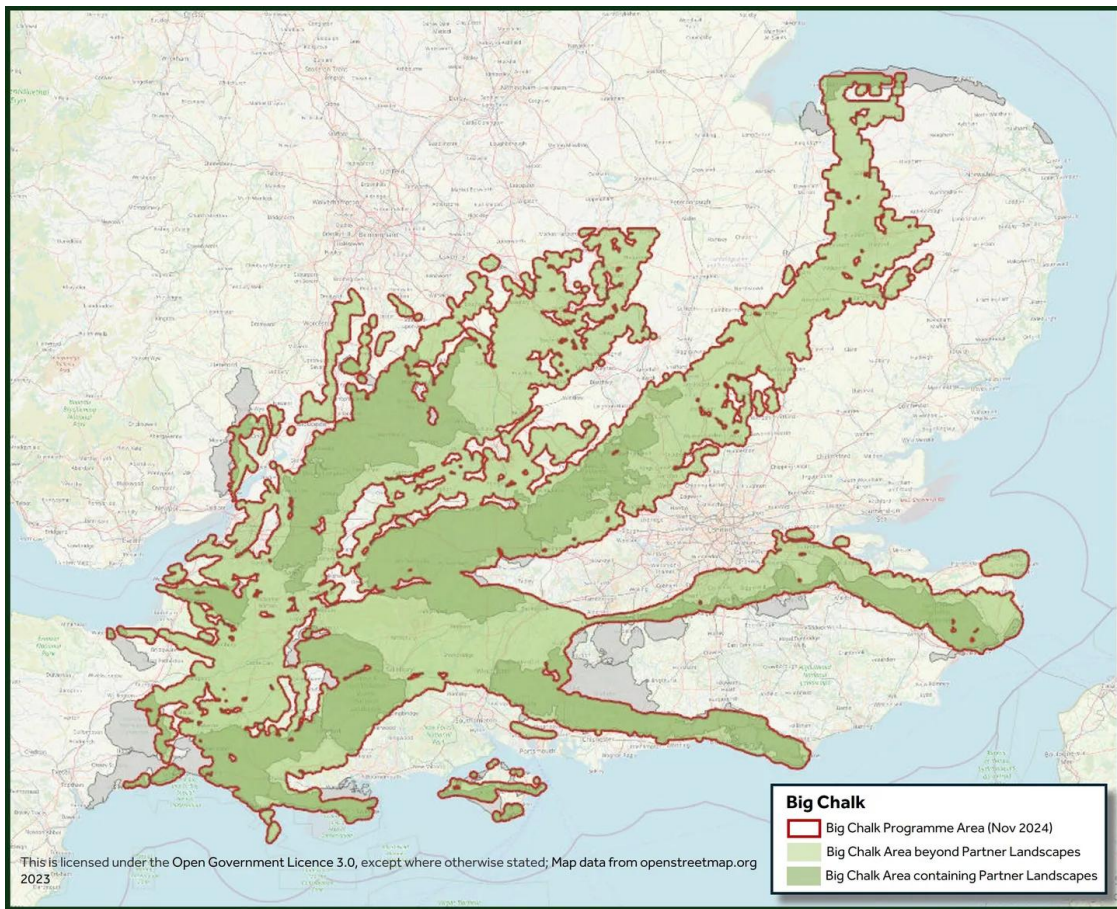
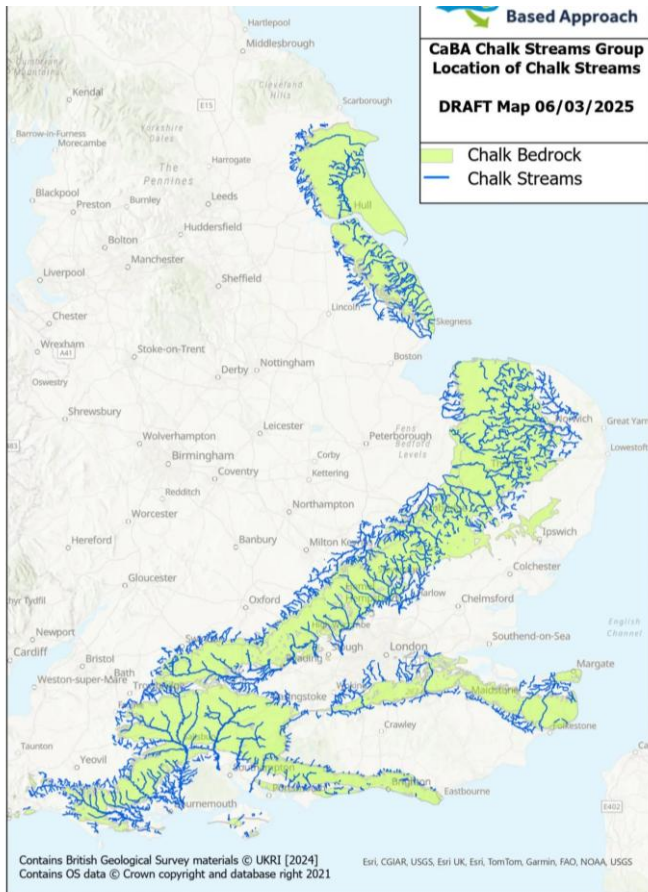
Chalk Streams

 **6,646km**



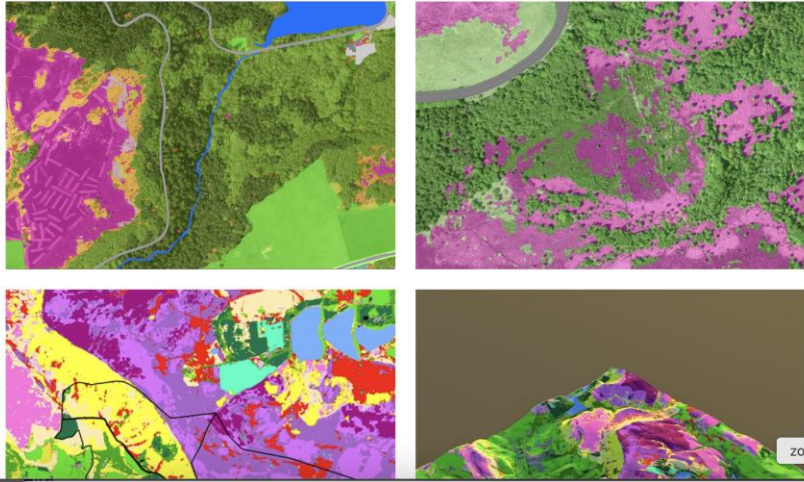
Contains OS data © Crown Copyright and database right 2026. Contains data from OS Zoomstack

Powered by Esri



Built with collaboration, backed by research

Landscape Observatory is a collaborative partnership between Cranfield University Environment Centre and a project unites cutting-edge AI mapping and local environmental knowledge to become a national model for management planning.



Coastal Wildbelt

The national initiative celebrating and strengthening our dynamic coastline as a place where people, nature, culture and community can thrive together.



We are the Protected Landscapes Partnership



National
Landscapes
Association



**NATIONAL
TRAILS.UK**



www.protectedlandscapespartnership.org.uk