



RIG FLOOR SAFETY

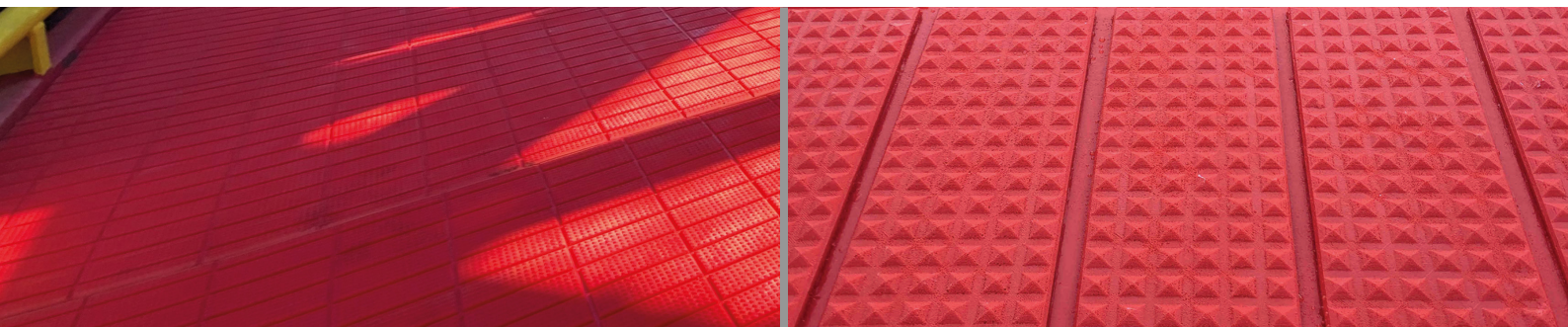
PIPEMATE® RIG FLOOR SET-BACK MATS

SCOTGRIP® HD Pipemate® is a heavy duty polyurethane rubber mat for use on rig floor set-back areas. Our slightly textured Pyragrip® surface is fully integrated with our substrate.

Tough, durable and resilient to withstand the compression and weight of pipe and drill collars, Pipemate® has been extensively tested with drilling fluids, oil-based drilling fluids, water, salt water, oil and kerosene with it showing no wear or absorption of the chemicals. Our Pipemate® mats are supplied with 2-way drainage channels as standard which have been moulded directly into the product substrate.

Designed for quick and secure fitting, our Pipemate® mats can also be cut/shaped on site due to the fully integrated construction of the matting.

- > COST EFFECTIVE
- > TOUGH AND DURABLE
- > EASY INSTALLATION
- > FULLY GUARANTEED
- > CARBON NEUTRAL ACCREDITED
- > NON CORROSIVE
- > REFLECTS POSITIVELY ON PERSONNEL PERFORMANCE
- > CAN BE CUT/SHAPED ONSITE
- > MANUFACTURED TO ANY SHAPE OR SIZE
- > FIRE RESISTANT



PRODUCT DESCRIPTION

Pipemate® Set-Back Mats

CODE

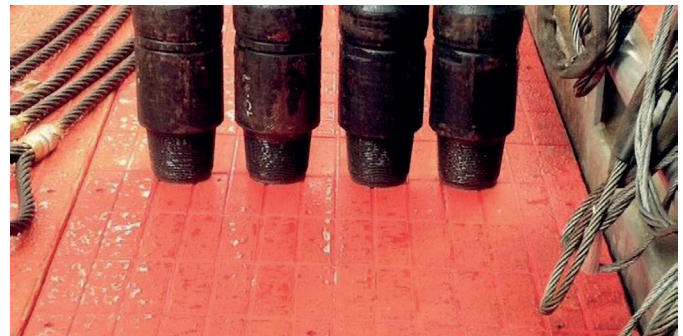
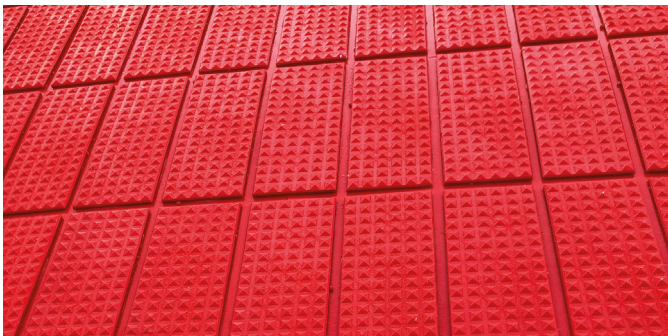
SPM

PRODUCT SPECIFICATIONS

Tensile Strength	47MPa
Tear Strength	165kN/m
Hardness	60 Shore D rating
Weight	40 kg/m ² (8.2lb/ft ²)
Standard Thickness	38mm (1 1/2" approx.)

DRAINAGE/FLUID CHANNELS

Pipemate® polyurethane matting is manufactured with two-way drainage channels as standard which have been moulded directly into the design of the product.



➤ HIGHLY VISIBLE

Colour coded in a wide range of colour schemes to suit individual locations. Colour codes are: red, safety yellow, black and green. Other colours available – please ask.

➤ HEAVY DUTY

Pipemate® polyurethane set-back matting is extremely durable and will remain highly effective for many years.

➤ MANUFACTURED TO CUSTOMER SPECIFICATION

Pipemate® polyurethane set-back matting is manufactured to suit individual locations. Please send a sketch or photo and we will get back to you with details.

➤ SAFETY MESSAGES/INFORMATION

Safety messages are proven to be an effective method of warning personnel of any hazards/hazardous areas they may be exposed to. Safety messages can be of any description and can even incorporate your company logo.

➤ EASE OF INSTALLATION

Pipemate® polyurethane set-back matting is designed for quick and secure fitting; it can be simply placed on top of the existing surface. Scotgrip® International products are non-load bearing and must have a suitable underlying structure to be secured to.

➤ QUALITY – IT'S WHAT DRIVES US

All SCOTGRIP® HD/UHD safety products are manufactured under BS EN ISO 9001:2015 quality-controlled conditions using highly compatible raw materials at our manufacturing facility in Aberdeenshire, UK.

➤ OUR SUSTAINABILITY COMMITMENT

At SCOTGRIP®, we're really proud to have achieved carbon neutral status and we're proactively moving towards our target of zero waste. Our environmental ethos extends to everything we do, including our product innovation. Our Pipemate® drill floor mats feature raw materials that are 16% fully circular which allows us to reduce our environmental impact further.