

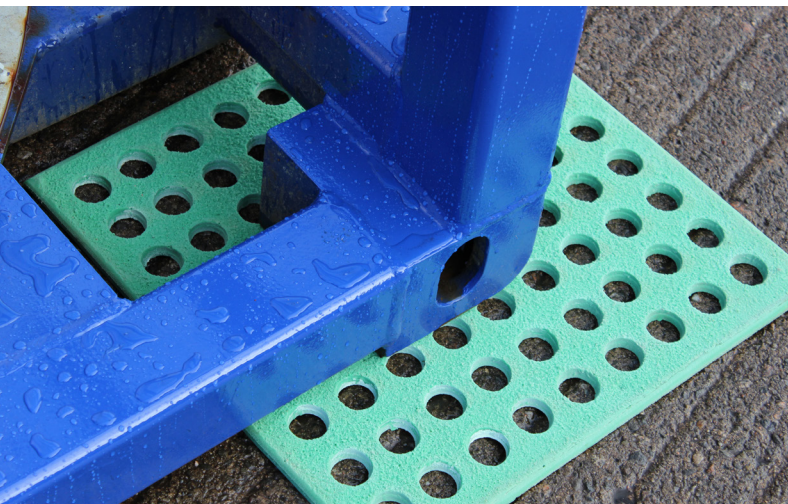


DECK PROTECTION

HD DECKMATE® DUNNAGE MATS - SCOTGRIP® TEXTURE

SCOTGRIP® Deckmate® HD Dunnage mats are heavy duty polyurethane mats used to protect decks from heavy loads. Tough and resilient to match the harshest environments, Deckmate® HD Dunnage mats provide excellent protection to the deck, are chemical resistant and are designed to give a long lifespan. These mats are manufactured with our unique, fully integrated Scotgrip® textured surface, all-round chamfered edges & pick-up holes in solid and lightweight versions.

- > COST EFFECTIVE
- > TOUGH AND DURABLE
- > SCOTGRIP® TEXTURED SURFACE
- > LIGHTWEIGHT / EASY TO HANDLE
- > ALL-ROUND CHAMFERED EDGES
- > FULLY GUARANTEED
- > CONVENIENT PICK-UP HOLES
- > CHEMICAL RESISTANT
- > VERY HARDWEARING
- > STANDARD / CUSTOM SIZES
- > CARBON NEUTRAL ACCREDITED
- > FIRE RESISTANT



PRODUCT DESCRIPTION

Scotgrip® HD Deckmate® Dunnage Mat - Solid
Scotgrip® HD Deckmate® Dunnage Mat - Lightweight

CODE

SDUNMHD

SDUNMLWHD

PRODUCT SPECIFICATIONS

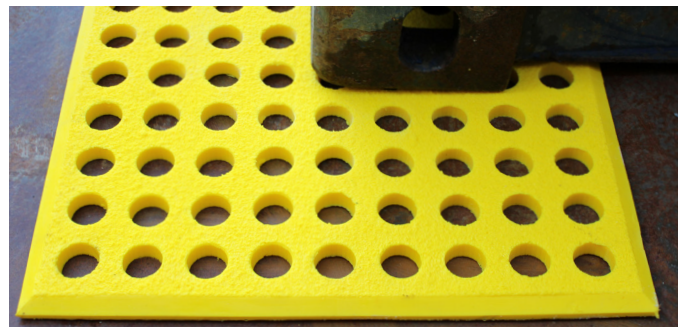
Tensile Strength	19MPa
Tear Strength	61kN/m
Hardness	90 Shore A rating

HD DECKMATE® DUNNAGE MAT - SOLID



Mat Size	Mat Thickness			
	12mm	15mm	20mm	
300mm x 300mm	1.19	1.49	1.98	kg
	1.98	2.49	3.24	lb
400mm x 400mm	2.10	2.60	3.50	kg
	4.63	5.73	7.72	lb
500mm x 500mm	3.30	4.10	5.40	kg
	7.28	9.04	11.91	lb
600mm x 600mm	3.50	4.40	5.80	kg
	7.72	9.70	12.79	lb

HD DECKMATE® DUNNAGE MAT - LIGHTWEIGHT



Mat Size	Mat Thickness			
	12mm	15mm	20mm	
300mm x 300mm	0.90	1.13	1.47	kg
	1.98	2.49	3.24	lb
400mm x 400mm	1.60	2.00	2.60	kg
	3.53	4.41	5.73	lb
500mm x 500mm	2.40	3.00	4.00	kg
	5.29	6.61	8.82	lb
600mm x 600mm	3.50	4.40	5.80	kg
	7.72	9.70	12.79	lb

➤ HIGHLY VISIBLE

Standard colours offered are: red, safety yellow, orange, blue, green and black.

Other colours are available - please ask.

➤ EASE OF INSTALLATION

Deckmate® HD Dunnage mats can be placed into position quickly and easily due to their flexibility and lightweight construction. SCOTGRIP® products are non load bearing and must be secured to a suitable load bearing structure.

➤ QUALITY - IT'S WHAT DRIVES US

All SCOTGRIP® HD/UHD safety products are manufactured under BS EN ISO 9001:2015 quality-controlled conditions using highly compatible raw materials at our manufacturing facility in Aberdeenshire, UK.

➤ HEAVY DUTY

Deckmate® HD Dunnage mats are extremely durable and will remain highly effective for many years. These products are durable, flexible and easy to handle.

➤ STANDARD SIZES OR TO CUSTOMER SPECIFICATION

Refer to the tables above for standard mat sizes. Custom sizes are also available if required, please send a sketch with dimensions and we will get back to you with details.

➤ OUR SUSTAINABILITY COMMITMENT

At SCOTGRIP®, we're really proud to have achieved carbon neutral status and we're proactively moving towards our target of zero waste. Our environmental ethos extends to everything we do, including our product innovation. Our Deckmate® HD dunnage mats feature raw materials that are 16% fully circular which allows us to reduce our environmental impact further.