



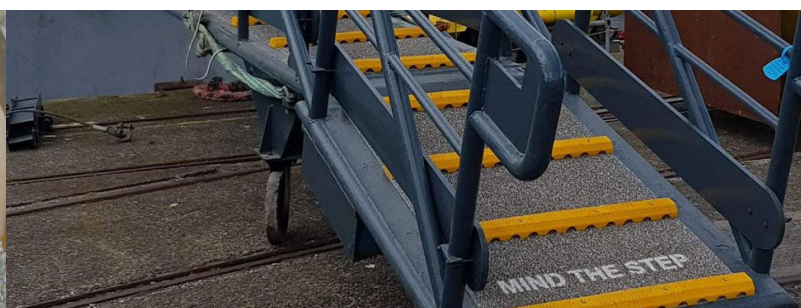
# GANGWAY SAFETY

## BROWMATE® GANGWAY TREADS

SCOTGRIP® HD Browmate® is a heavy duty, high traction anti-slip polyurethane tread which enhances personnel safety on all types of marine gangways/brows.

Browmate® gangway treads incorporate the unique Pyragrip® anti-slip textured surface which is fully integrated into the design of this safety product. Another advantage is the moulded drainage tunnels which allow for quick water run-off. These are located along the entire length of the Browmate® gangway tread. These are designed for quick and secure fitting on your gangway with mechanical fixings.

- > ELIMINATES 'SLIPS AND TRIPS'
- > COST EFFECTIVE
- > HIGH TRACTION
- > TOUGH AND DURABLE
- > EASY INSTALLATION
- > FULLY GUARANTEED
- > NON CORROSIVE
- > REFLECTS POSITIVELY ON PERSONNEL PERFORMANCE
- > CAN BE CUT/SHAPED ONSITE
- > STANDARD SIZES AND CUSTOM MADE
- > CARBON NEUTRAL ACCREDITED
- > FIRE RESISTANT



## PRODUCT DESCRIPTION

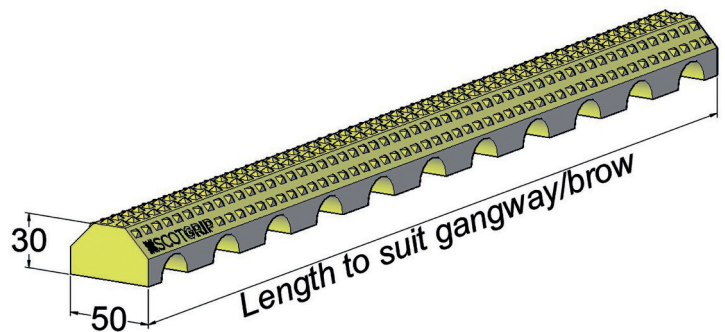
Browmate® Gangway Treads

## CODE

SBM

## PRODUCT SPECIFICATIONS

|                  |                   |
|------------------|-------------------|
| Tensile Strength | 26MPa             |
| Tear Strength    | 85kN/m            |
| Hardness         | 95 Shore A rating |
| Weight           | 1.2kg/m length    |



### ➤ HIGH-TRACTION ANTI-SLIP

The unique Pyragrip® anti-slip safety surface is fully integrated with the Browmate® gangway tread and will provide a sound foot holding even in the most extreme conditions.

### ➤ HIGHLY VISIBLE

Colour coded in a wide range of colour schemes to suit individual locations. Colour codes are: safety yellow, orange, red. Other colours available – please ask.

### ➤ HEAVY DUTY

Browmate® gangway treads are extremely durable and will remain highly effective for many years.

### ➤ STANDARD SIZES OR TO CUSTOMER SPECIFICATION

Browmate® gangway treads are manufactured and supplied to the exact length required for your gangway/brow. Designed for quick and secure fitting, our Browmate® gangway treads can also be easily cut/shaped on site if required.

### ➤ EASE OF INSTALLATION

Browmate® gangway treads designed for quick and secure fitting; it can be simply placed on top of the existing surface & secured with mechanical fixings. SCOTGRIP® products are non-load bearing and must have a suitable underlying structure to be secured to.

### ➤ QUALITY – IT'S WHAT DRIVES US

All SCOTGRIP® HD/UHD safety products are manufactured under BS EN ISO 9001:2015 quality-controlled conditions using highly compatible raw materials at our manufacturing facility in Aberdeenshire, UK.

### ➤ OUR SUSTAINABILITY COMMITMENT

At SCOTGRIP®, we're really proud to have achieved carbon neutral status and we're proactively moving towards our target of zero waste. Our environmental ethos extends to everything we do, including our product innovation. Our Browmate® gangway treads feature raw materials that are 16% fully circular which allows us to reduce our environmental impact further.