



DRAWA FOREST PROJECT - Annual Report 2020 - 2024



Contents

Drawa Forest Project	3
Annual report year 2020 - 2024	3
Summary	3
Part A: Project updates	7
Part B: Project activities	10
Part C: Plan Vivo Certificate issuance submission	12
Part D: Sales of Plan Vivo Certificates.....	13
Part E: Monitoring results	14
Part F: Impacts.....	16
Part G: Payments for Ecosystem Services.....	16
Part H: Ongoing participation	16

Drawa Forest Project

Annual report year 2020 - 2024

Submitted by: Nakau and Live & Learn Fiji (project coordinators)

Date of submission: 10th December 2024

Summary

The Drawa Forest Project commenced in September 2012, however did not reach first issuance of PVCs until March 2018. Credits are issued ex-post under Plan Vivo Standard version 4. The project period is for 30 years.

The project was developed by Nakau working in collaboration with Live & Learn Fiji (collectively the 'project coordinators'), working with landowners of the Drawa Block in Vanuau Levu, Fiji (see maps below). The landowners comprise eight clans who have established the Drawa Block Forest Communities Cooperative (DBFCC). DBFCC also includes a Women's group and youth group as separate members. The clan members (mataqali) are: Drawa, Navunica, Nadugumoi, Bakibaki, Nakalounivuaka, Vatucuca, Tonikula and Nakase. Most mataqali members reside in the villages surrounding The Drawa block: Vatuvonu, Keka, Lutukina, Batiri and Nayarailagi villages.

The main activity of the Drawa project is conservation of mature indigenous rainforest through avoiding forest degradation, by means of legal protection of forest. Legal protection was secured through a conservation lease. Emissions reductions and removals are generated through avoided timber harvesting and enhanced removals from enabling regeneration.

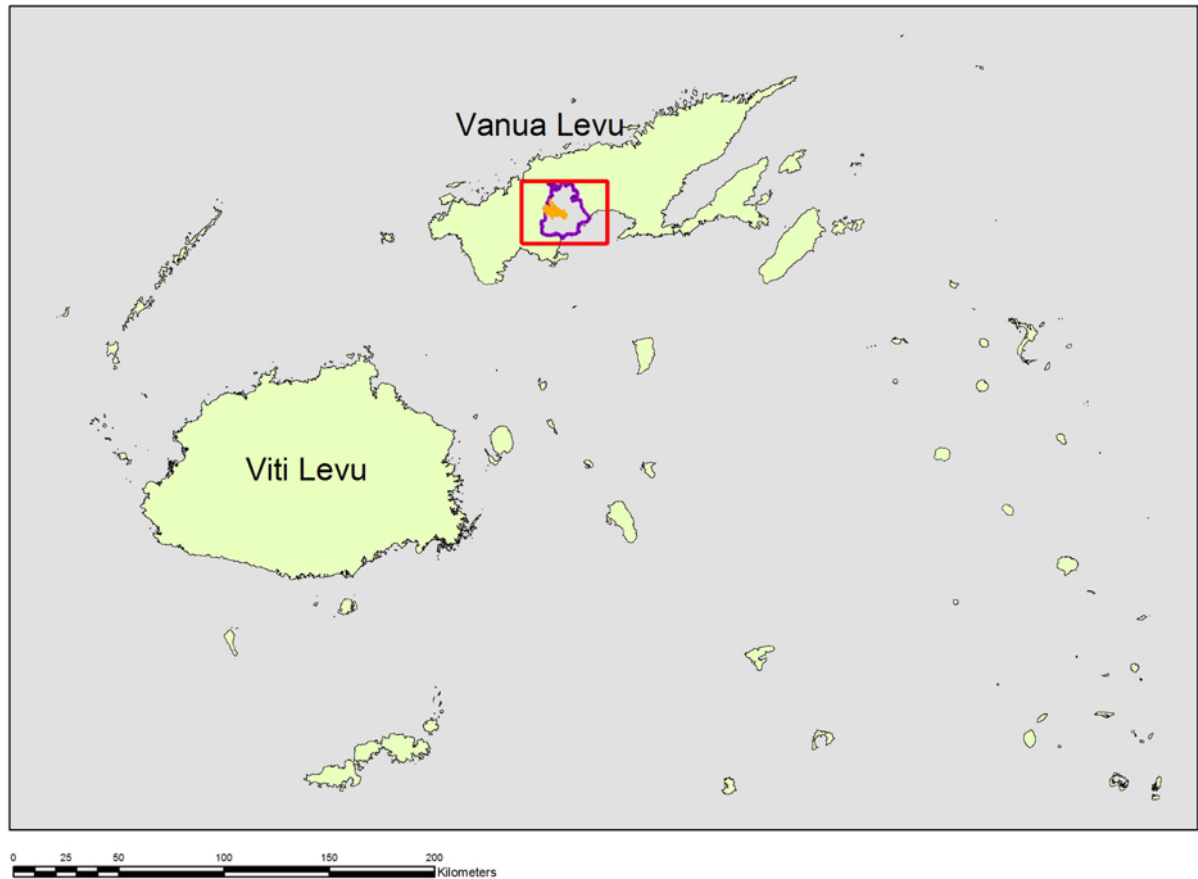
Project aims to deliver enduring benefits to participating communities through the provision of payments (compensation) for the loss of income from timber harvesting that has been avoided. As part of the project community governance has been strengthened through the formation of the Cooperative and undertaking associated capacity building activities. This project aims to enable the Cooperative to manage funds received in a manner that brings sustainable benefits for the community in the form of community development initiatives, such as infrastructure improvements; supporting further income generating activities for cooperative members; and administering a process of distributing member dividends.

The core project aim is to reduce carbon emissions to the atmosphere by changing forest management in the eligible area from timber extraction to forest protection. The project will also protect watersheds resulting in the maintenance of healthy river systems as a high quality source of drinking water and as habitat for aquatic species. Forest protection will reduce the vulnerability of local communities to climate related risk through reducing the impact of extreme rainfall events on soil erosion and flooding, and the impacts of drought on water security.

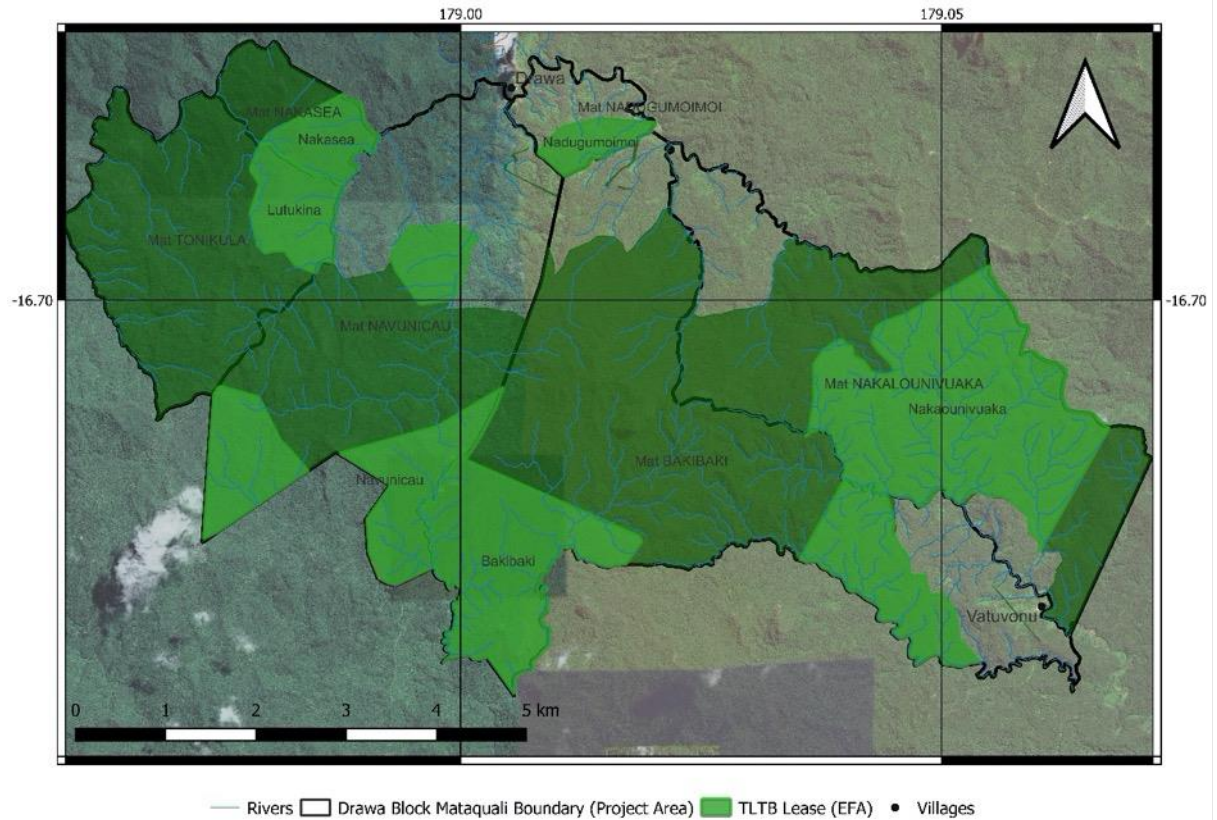
Project overview	
Reporting period (this report)	06/09/2020 – 05/09/2024
Geographical areas	The Project Area is located on Vanua Levu, the second largest island in Fiji. It sits on the centre of the island at 4033000mE and 2029000mN. Refer to maps 1 & 2 (below).
Technical specifications in use	<i>Technical Specifications Module(C)1.1 (IFM-LtPF): Improved Forest Management – Logged to Protected Forest V1.0</i>

Map 1 (below) shows the location of the project in Fiji. Map 2 shows the Project Area which includes the areas inside the mataqali (clan) land boundaries, inclusive of the Protection Forest (dark green shading) and the Eligible Forest Area (light green shading).

Map 1. Project location in Fiji



Map 2. Project Area (EFA = eligible forest area for carbon accounting)



Project indicators	Historical 2012 - 2020	Added/ Issued this period 2020 - 2024	Total
No. smallholder households with PES agreements	0	0	0
No. community groups with PES agreements (where applicable)	1	0	1
Approximate number of individuals in these community groups	450 ¹	0	450
Area under management (ha) where PES agreements are in place	1588.15 ha	0	1588.15 ha
Total PES payments made to participants (USD)	\$121,947.91 (@ Aug 2020)	\$263,923.27	\$385,871.18 (@ Aug 2024)
Total sum held in trust for future PES payments (USD)	\$161,115.50 (@ Aug 2020)	\$191,289.61	\$352,405.11 (@ Aug 2024)
Allocation to Plan Vivo buffer (tCO ₂)	33,070	0	33,070
Saleable emissions reductions achieved (tCO ₂)	132,280	0	132,280
Unsold Stock at time of Submission (PVC)			9,457
Total Unsold Stock (PVC)			9,457
Plan Vivo Certificates (PVCs) issued to date			132,280 PVCs
Plan Vivo Certificates requested for issuance			0
Plan Vivo Certificates available for future issuance (REDD only) ²			
Vintages 15/16 – 19/20			0
Vintage 2020/21			18,000
Vintage 2021/22			18,000
Vintage 2022/23			18,000
Vintage 2023/24			18,000
Vintage 2024/25			18,000
Total PVCs issued (including this report)			132,280

¹ This figure represents the number of individuals in households; previous annual reports used number of households (120)

² Vintages 20/21 and after are estimated and subject to the next verification event (2025 annual report)

Part A: Project updates

A1 Key events

The following is a non-comprehensive list of events. Further information about these events (e.g. participation data or description) is found in the body of the report.

- February 2021 (DBFCC AGM for 2019-20 and 2020-21)
- April 2021 Gender Awareness & participation workshop
- July – October 2021 Nakau undertook a forest change assessment of the Protection Forest area surrounding the Drawa EFAs.
- May 2022 Drawa project SWOT Analysis with landowner participants
- August 2022 Nakau trainer visit, ranger training and monitoring. Forest monitoring training using Avenza.
- March 2023 Plan Vivo team visit – stakeholder workshop, community visit and information sessions with project participants
- August 2023 Nakau trainer visit, ranger training and monitoring. Forest monitoring training using Avenza.
- August – September 2024 Comprehensive forest inventory (baseline revision) across the entire Drawa eligible forest area and adjacent areas under consideration for EFA extension
- February 2024 (DBFCC AGM for 2022-23)

A2 Successes and challenges

Table 1 (below) documents some of the notable successes in supporting the Drawa communities participation in the project. At the local level, activities are implemented through the Drawa Block Forest Communities Cooperative (DBFCC). Some activities are directly related to carbon, while others address community livelihood or other important matters that provide benefits from the project and incentivise commitment to project maintenance.

Table 1 Project successes

Year	Successes
2020	<ul style="list-style-type: none">• LLEE was able to assist the DBFCC team with logistics for their Annual General Meeting which was fortunately held before the borders closed due to the COVID 19 pandemic.• Despite COVID 19 pandemic the LLEE was able to co-ordinate with the DBFCC Board to communicate to all communities the importance of adhering to COVID 19 precautionary measures. Especially restricting anyone who did not live in the villages from entering. Also, post border closure both teams were able to consolidate their efforts to reach out again to the communities and carry out awareness not only for COVID 19 but also leptospirosis, dengue and typhoid due to the outbreak in the Northern Division. Simultaneously, a scoping assessment was carried out to measure the damage that Cyclone Harold had on affected household in each community.• Rangers undertook forest monitoring activities; the EFA and protected forest areas were maintained
2021	<ul style="list-style-type: none">• Land use management planning sessions were carried out in the respective communities which allowed the community members to identify what sort of Agriculture Activities they would like to practice on the pieces of land that is not included in the Conserved Forest Areas. Mapping this out gave the community a better perspective on what crops would thrive best on a particular piece of land. This was simultaneously carried out with a Bee Hive Survey to collect as much Data on the Status of the Bee hives in each village in order to propose for possible funding to help with revitalizing the Bee Hives that were damaged during Cyclone Yasa and Ana. (Note, the honey business is supported under the

	<p>DBFCC carbon business). Also, key informants which included the village heads, village nurses, Women's Representative and Youth Representatives (both male and female) were engaged by LLEE's Gender Officer on Gender Power Awareness. This session was targeted at addressing an issue that was raised by the women during the DBFCC AGM on the fact that only the Women and Youth in the community run the Honey Business.</p> <ul style="list-style-type: none"> • Benefit sharing process session was carried out in the communities by both LLEE and DBFCC to help the landowners understand better of the fundamentals of how the funds are distributed to each group within the Co-operative. From carbon sales to individual account disbursements.
2022	<ul style="list-style-type: none"> • Auditors (supporting a VVB) conducted interview sessions in 2 villages namely Batiri and Nayarailagi. This consultation was focused on interview land owners, Bee Committee, Forest Rangers, DBFCC Board members, youth and women's group to basically get their feedback about the project. • SWOT was carried out basically to get feedback from the communities on their views of both the DBFCC Board and LLEE. This of course to inform how we can deliver better in terms of different roles and responsibilities while at the same time being accountable in our co-ordination. • Nakau team visit was very productive especially meeting with the different stakeholders such as the Climate Change division to name a few mainly to discuss part 10 of the Climate Change Act and how it could possibly affect the project.
2023	<ul style="list-style-type: none"> • Plan Vivo team visit to the communities was such a highlight not only for the land owners but the team themselves. Most importantly being able to experience firsthand the feedback from the landowners their view and opinions about the project. • LLEE were appointed as a member of the National Carbon Market Strategy Roadmap working group gave Drawa the opportunity to share their successes and lessons learnt to in some way inform the National framework for landowning units who wish to setup their own carbon trading business. • Nakau personnel travelled to Fiji to participate in the National Carbon Market Strategy Roadmap participatory design process. The Drawa project was prominently featured as a case study and discussions regarding harmonisation of different market approaches. • With support from Nakau and LLEE, DBFCC became the first cooperative in Fiji to register internet banking and using an accounting software (according to ANZ bank).
2024	<ul style="list-style-type: none"> • Nakau and LEE worked with DBFCC and mataqali (clans) to updating land use plans to reinforce understanding of project boundaries, and gain consensus from existing landowning members for a proposed extension of the carbon project into neighbouring land areas. • An intensive forest inventory was carried out, led by Nakau's forestry expert and LLEE, with support of University of the South Pacific and Ministry of Forestry and labour and expertise provided by the local DBFCCC rangers. The forest inventory was undertaken as part of the 10-yearly baseline revision, and also required to assess cyclone damage. The forest inventory was a large undertaking, with 8 weeks field work and followed by significant effort in data management and analysis. The activity also provided further local employment and built the capacity of the forest rangers.

The challenges table (Table 2, below) documents some of the significant challenges encountered during this reporting period.

Table 2 Project challenges

Year	Challenges	Actions
2020 & 2021	COVID 19 was a major challenge for both years in terms of community engagement. International travel and provincial travel was restricted for significant periods.	LLEE supported DBFCC to undertake measure to prevent the spread of Covid. The previous years of capacity building and support to DBFCC left them in a good position to continue operations without being able to receive support visits.
2022	The DBFCC holds a conservation lease for the Drawa PA that required amendments to clarify payments to TLLB (statutory body representing indigenous landowners). Although parties agreed to the amendment it was difficult to obtain 60% of signatories from clan members to execute the change. (due to population demography, people living outside the communities etc).	After negotiation, TLTB agreed that a majority (51 percent) of registered landowning members who are above 18 needed to sign a letter requesting for this amendment.
2023	Mineral exploration interest by Vatukoula Gold Mining Limited in Vanua Levu which posed a risk to the Drawa conservation area	Several meetings were held with the Department of Mineral Resources to share map data and advocate for the Drawa PA to be excluded from exploration areas. Negotiations are ongoing. However the negotiations are regarding future plans and the risk is not imminent.

A3 Project developments

There are no significant project developments such as changes to project area, governance arrangements or legal agreements from the reporting period.

There are nil PDD changes to report.

There were no outstanding corrective action requests (CARs) to be addressed during this reporting period.

There is no update to the risk assessment (the risk assessment will be updated in the next annual report corresponding with a verification event).

A4 Future Developments

The project proponents (Nakau, LLEE and DBFCC) are planning to extend the Drawa eligible forest area (for carbon accounting) into a new area within the existing project Area footprint. If possible this extension will be introduced at the next verification event / annual report. However this depends on progress over the next 12 months.

In 2022, the DBFCC requested Live & Learn and Nakau to investigate the possibility of expanding the carbon crediting area of the project to include a zone designated as the “protection forest” area. This area falls within the existing Drawa Project Area but is not within the eligible forest areas (EFAs) currently leased under the REDD+ conservation lease.

The protection forest was originally set aside within the former sustainable forest management (SFM) project to balance the ecological values of the site with sustainable timber harvesting and was not included in the extensive forest inventory undertaken in designated logging coupes. The SFM project was eventually discontinued due to capacity constraints and financial feasibility, and the baseline activity possible at Drawa reverted to legally sanctioned conventional logging.

When the Drawa Project commenced it continued to operate under the land use plan developed under the SFM project and only designated the production forest areas (coupes) as EFAs for carbon. This was due to reliance on access to existing forest inventory data that was limited to the coupes. Furthermore, Live & Learn lacked the resources required to undertake an additional forest inventory for the 'protection forest,' so it remained excluded from the EFA areas.

In response to the request from DBFCC, Live & Learn and Nakau have assessed the eligibility for including the protection forest in an 'expanded' Drawa Forest Carbon Project. Despite being called protection forest, this zone is not protected by any existing policy or regulation and contains the same tree species as the EFAs. The protection forest could be legally logged and is only protected by DBFCC at their discretion. Therefore, the formal protection of this forest under a REDD+ Conservation lease could be considered "additional."

Initial mapping has been completed, including adjusting for slope and accessibility. The overall size of the EFA expansion is estimated at approximately 1500 ha. When added to the existing EFA (1,590 ha) the project will almost double in size to just over 3,000 ha.

Part B: Project activities

B1 Project activities generating Plan Vivo Certificates

Table 3: Project activity summary

Name of technical specification	Area (Ha)	No smallholder households	No Community Groups
<i>Technical Specifications Module(C)1.1 (IFM-LtPF): Improved Forest Management- Logged to Protected Forest V1.0</i>	1,590	0	1

Nakau intends to migrate the Drawa project to Version 5 of the Plan Vivo Carbon Standard at the next verification event (due in September 2025). This will include adoption of a new project baseline based on the 2024 forest inventory, and new technical specifications following the approved methodology: *Plan Vivo PM001 Version 0.1 – Agriculture and Forestry Carbon Benefit Assessment Methodology*.

B2 Activities relating to national policy alignment and compliance

The project team has participated in various forest carbon activities at the national level that are important for maintaining ongoing support from Government, ensuring alignment and monitoring for any change in baseline conditions (policy drivers etc). A summary of activities is presented in Table 4 below.

Table 4 Participation in national policy forums

Date	Event	Notes
11 th August 2020	Participation in workshop: Permanent Forest Estates and Forest Certification- Fiji Ministry of Forestry	Stakeholder consultation workshop to develop national level delineation and management of Fiji's forestry resources.

22 nd June 2021	Participation in REDD+ Safeguards Information System Workshop	Stakeholder workshop to validate the REDD+ Safeguards Information System for Fiji.
5 th November 2021	Participation in Fiji Forest Sector Outlook Study 2020-2030-2050	This was a workshop to provide a better understanding of the changing relationships and evolving trends between society and forests, and thus facilitate policy reviews and reforms at the national level.
9 th December 2021	REDD+ Steering Committee Special Meeting with World Bank	Soft Launch of Fiji's ER Program and the Special REDD+ Steering Committee Meeting with the World Bank to update relevant stakeholders on its progress.
15 th August 2022	LLEE and Nakau team meeting with Climate Change Division	Meeting to form a working relationship with the Climate Change Division
8 th March 2023	Supported Plan Vivo team visit and information session with stakeholders	Meetings and workshop with government, civil society and private sector stakeholders, to provide information on the Plan Vivo Standard, sharing briefly about the background of their scope of work and generally providing more context on the voluntary carbon market.
4 th April 2023	Participation in Fiji Carbon Market Design & Capacity Building workshops	The purpose was to build Fiji's capacity to effectively engage with carbon markets and ensure that market mechanisms can positively contribute to the financing of key climate change mitigation, adaptation, and resilience-building objectives whilst also leveraging additional social, environmental and economic co-benefits.
1 st May 2023	Participation in Fijian Carbon Market Strategy Roadmap Consultation Workshop	The workshop convened a broad range of key stakeholders with interests and relevance to the collaborative efforts to navigate carbon market mechanisms to help inform the development of the Strategy Roadmap.
16 th May 2023	Participation in Climate Finance Access Network (CFAN) Pacific Workshop: Session on Financial Instruments for Adaptation	The workshop aim was to provide participants valuable insights into the project development cycle, from project identification and development to funding.
8 th August 2023	Participation in First Carbon Market Advisory Group meeting	The meeting focused on discussions and preparations for the second National Carbon Market Strategy Roadmap workshop to facilitate further deliberations from the previous workshop.
14 th & 15 th August 2023	Participation in National Carbon Market Strategy Roadmap Consultation Workshop 2	Workshop II brought together policymakers, stakeholders and experts from both the public and private sectors for further consultation
19 th to 22 nd September 2023	Participation in Improving Land Tenure & Governance of Forest Learning Exchange	The aim was to strengthen the use of good governance principles in customary governance of land and forests and hence to effectively protect existing forests and restore degraded ones, mitigate climate change, bring economic benefits to customary rightsholders, and national economy.
25 th March 2024	Participation in National Carbon Market Strategy Roadmap Draft Validation	This workshop was to validate the draft document which outlines the roadmap's objectives, aiming to identify considerations, engagement options, and

	workshop	primary actions to enhance Fiji's utilization of carbon market mechanisms
11 th April 2024	Participation in meeting with World Bank for the Fiji EnABLE Program to support the design and development of the project.	The overall aim of EnABLE is to promote and strengthen social inclusion of local communities and marginalized groups (such as women, youth, and people with disabilities) in Emissions Reduction Programs (ERPs) in order to maximize their carbon and non-carbon benefits, and to support the community level implementation and effectiveness of the ERP in Fiji.

Part C: Plan Vivo Certificate issuance submission

There is no issuance request with this annual report. The next issuance request will come with the 2024/2025 report.

Part D: Sales of Plan Vivo Certificates

D1: Sales of Plan Vivo Certificates

Table 5 provides the detail of carbon sales during the reporting period. During this period Nakau sold Drawa credit to three resellers based in Sweden, New Zealand and the United States. There were also some relatively small volume retail sales (direct retirements).

Historic sales total: USD \$488,075.17 Historic allocated to DBFCC USD \$283,063.41 (58%). A detailed breakdown of historical sales is provided in Annex 1.

Table 5: Sales of Plan Vivo Certificates for this period (06/09/2020 – 05/09/2024)

Vintage	Buyer	Date	Volume PVCs	Unit price (USD)*	Sale value (USD)*	Price to participants per PVC*	% Sale price received by participants
2013 - 2014	Stoke	16/12/2020	250				60%
2016 - 2017	ZeroMission	8/07/2021	5,000				60%
2013 - 2014 2015 - 2016	COTAP	14/10/2021	3,006				60%
2015 - 2016	eCoast Marine Consulting & Research	18/11/2021	48				60%
2016 - 2017 2016 - 2017	ZeroMission	24/02/2022	7,622				60%
2016 - 2017 2017 - 2018	ZeroMission	24/02/2022	5,500				60%
2017 - 2018	ZeroMission	31/05/2022	2,500				60%
2017 - 2018	ZeroMission	23/06/2022	1,015				60%
2015 - 2016	COTAP	15/07/2022	2,645				60%
2017 - 2018 2018 - 2019	ZeroMission	31/08/2022	10,909				60%
2015 - 2016	Monte Velho Retreat	20/11/2022	8				60%
2018 - 2019	ZeroMission	1/12/2022	10,454				60%
2015 - 2016	Matanivusi Resort - Fiji Islands	5/06/2023	144				60%
2019 - 2020	Ekos	26/09/2023	5,121				60%
2015 - 2016	ZeroMission	18/10/2023	2,000				60%
2015 - 2016 2018 - 2019 2019 - 2020	ZeroMission	26/03/2024	10,500				60%
Total			66,722				60%

*Pricing reported for internal monitoring purposes only.

Part E: Monitoring results

Results of monitoring activities (ecosystem, carbon and social impact monitoring) will be prepared and presented with the 2025 annual report that coincides with the next verification and issuance request.

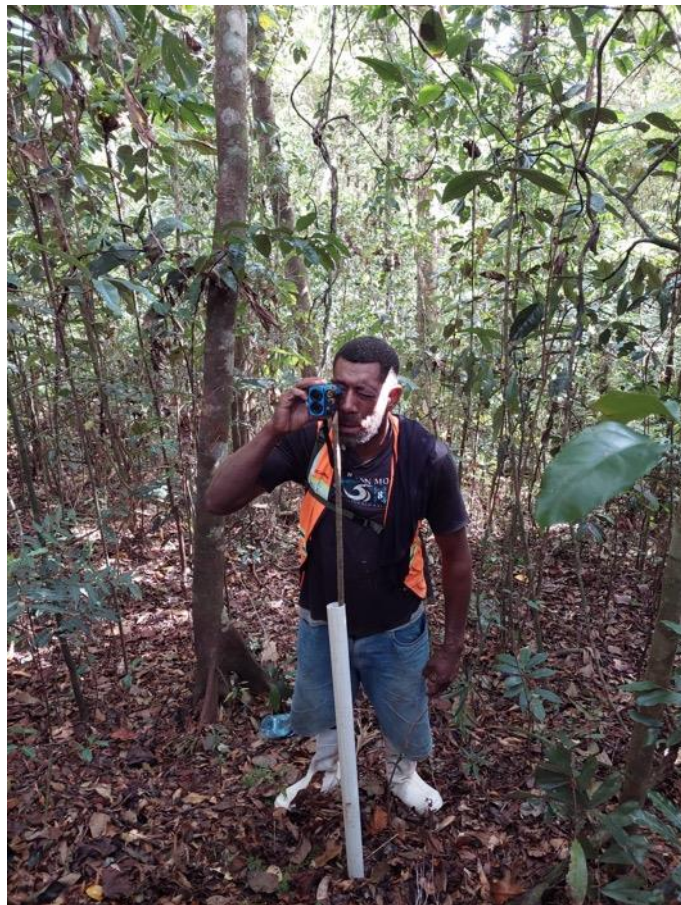
A summary of formal monitoring activities conducted is provided in the Table 6 below. In addition to the below, informal monitoring occurs through ad hoc ranger visits to the sites with any significant observations reported to the DBFCC committee. Note that some EFA locations are quite large, requiring monitoring effort that lasted for several weeks.

Table 6. Key monitoring events / activities

Period	Activity	Locations
July – October 2021	Nakau undertook a forest change assessment of the Protection Forest area surrounding the Drawa EFAs using remote sensing.	All EFA areas and protection forest areas to monitor for leakage
January 2022	Forest monitoring and boundary marking	Nakalounivuaka, Bakibaki eligible areas
August 2022	Nakau trainer visit, ranger training and monitoring. Forest monitoring training using Avenza.	Nakase, Tonikula eligible areas
July 2023	Forest monitoring and boundary marking. Focus on risk areas adjacent to farming areas near Vatuvonu village	Nakalounivuaka, Bakibaki, Nakase and Tonikula eligible areas
August 2023	Nakau trainer visit, ranger training and monitoring. Forest monitoring training using Avenza.	Nadugumoimoi eligible area
April - June 2024	Forest monitoring and boundary marking	Navunica and Tonikula eligible areas
August – September 2024	Comprehensive forest inventory (baseline revision) across the entire Drawa eligible forest area and adjacent areas under consideration for EFA extension	All EFA areas (random sample plots)



DBFCC rangers, Ministry of Forestry staff and Nakau forestry expert during the forest inventory



DBFCC ranger Mani measuring tree distance

Part F: Impacts

F1: Evidence of outcomes

Impacts from the project are monitored and reported once per verification cycle through the Social Impact Survey. The next survey is scheduled to be implemented in 2025. The results will be reported with the 2025 annual report that coincides with the next verification and issuance request.

Part G: Payments for Ecosystem Services

G1: Summary of PES by year

The table below shows payments from the previous and current reporting period. All payments have been made in accordance with the terms of the signed PES agreements.

Table 7. Summary of payments

Reporting Year	Total previous payments	Total ongoing payments	Total payments made	Total payments held in trust
09/12 – 09/17*	\$0.00	\$0.00	\$0.00	\$0.00
09/17 – 09/18	\$0.00	\$34,925.00	\$34,925.00	10558.90
09/18 – 09/19	\$34,925.00	\$27,869.62	\$62,794.62	220268.79
09/19 – 09/20	\$62,794.62	\$59,153.29	\$121,947.91	161115.50
09/20 – 09/21	\$121,947.91	\$71,142.00	\$193,089.91	121486.00
09/21 – 09/22	\$193,089.91	\$67,887.00	\$260,976.91	240257.98
09/22 – 09/23	\$260,976.91	\$80,722.27	\$341,699.18	286327.11
09/23 – 09/24	\$341,699.18	\$44,172.00	\$385,871.18	352405.11
Total Payments + Total held in trust				\$738,276.29

*First credit issuance was 27th March 2018

Part H: Ongoing participation

H1: Recruitment

- No new participant groups were added in this reporting period.

H2: Project Potential

- There is no waiting list for new participant groups

H3: Community participation

Regular community meetings as part of the project during the period included:

- DBFCC quarterly board meetings

- DBFCC quarterly land management meetings
- DBFCC quarterly finance committee meetings
- DBFCC Annual General Meetings (AGM)
- Weekly meetings between Nakau and LLEE for project team support
- Minimum quarterly monitoring visits to the Drawa site by LLEE (often more frequent)
- Annual visits to Drawa by Nakau personnel

Note that meets and community support visits could not be conducted during the Covid pandemic period.

The DBFCC (landowner cooperative) AGM was conducted twice in the period:

- 26th February 2021 (DBFCC AGM for 2019-2020 and 2020-2021)
- 9th February 2024 (DBFCC AGM for 2022-2023)

Table 8 provides overall participation data for Drawa landowner participants for the project period.

Table 8. Total participation by gender

Category	Total	Men	Women	Youth
DBFCC Paid workers (including casual for activities such as the forest inventory)	67	17	25	25
DBFCC Board and Committee Members	6	5	1	
Total participation (combined) attendance at Project meetings/workshops including AGM	387	201	186	



DBFCC members participate in a review land use plans led by Live & Learn

Table 9 provides participation data during a sample of community training and support visits conducted in the reporting period. These are the support visits where participant data is available. On average, women constituted 50% of participants.

Activity	Men	Women	Total	% women
Gender awareness training	9	14	23	61%
Land use management planning	12	10	22	45%
COVID 19 awareness and support	9	3	12	25%
Benefit sharing awareness workshop	6	7	13	54%
Women's group monitoring workshop	0	9	9	100%
Carbon project SWOT Analysis	9	4	13	31%
Presentation and workshop of 2020 Social Impact Survey	7	5	12	42%
Updating land use plans workshop	6	5	11	45%
Totals	58	57	115	50%

Table 10 Provides a description of the aim of several participants workshops conducted by Live & learn in the participant communities.

Date	Activity	Notes
February 2021	Support for DBFCC Annual General Meeting for 2021-2022	Supported preparation and logistics for the key annual event. This includes supporting participants to travel. Under the Co-operative Act it is mandatory to have an AGM after every financial year.
15 th April 2021	Gender Awareness & participation workshop	Aimed to empower women and youth and educate the men on the importance of gender equity in the project
27 th May 2022	Drawa project SWOT Analysis with landowner participants	Undertaken to assess the impact of our engagement with communities and map out ways moving forward we can assist them more effectively.
22 nd August 2022	Avenza Training for Forest Rangers	The objective of the training was to reintroduce the Avenza platform to the forest rangers and identify any major challenges currently faced by the forest rangers. This also allowed discussions around how to improve the data collection techniques by updating the Drawa monitoring schema and review what sort of data is collected in the field and for what purpose.
8 th March 2023	Plan Vivo team community visit and information sessions with project participants	Visited Drawa villages to share information about how the Standard works. This was also an opportunity to receive project updates and discuss potential for project expansion.

Part I: Project Operating Costs

Quantified operating costs are not provided in this report for the following reasons:

- Reporting expectations changed from once per verification period to annually, making it difficult to work back through four years of financial data across the three implementing partners.
- In addition to PVC sales income, each implementing partner has received grants that co-finance (subsidize) operating costs. The respective accounting systems are set up to record expenditure against the various grants (for grant acquittals) and could not simultaneously track costs against the Drawa project operations.
- Furthermore, grant finance also covered other activities unrelated to the Drawa project. For example, a grant funded field trip may cover travel costs for a Drawa community visit, however the trip would have multiple objectives beyond the carbon project. Such costs were allocated to the respective grants (for acquittals) and not broken down into a finer detail for recording against carbon project operations.
- Although operating costs could be estimated, the high uncertainty (low accuracy) would limit the value of reported operating costs.

From our general qualitative assessment of operating costs we arrive at the following conclusions:

- Project participants (DBFCC) keep their operational costs to a minimum in order to maximise community benefits. For example, significant administrative work is undertaken by the treasurer on a voluntary basis. Many costs incurred also comprise a community benefit (e.g. allowances paid to rangers).
- Due to the relatively small size of the project, 20% of the sales income is not sufficient to cover all operational costs of the Project Coordinator (LLEE) and Program Operator (Nakau). However both organisations have strong track records in attracting grant finance and effectively utilise this to fill gaps and enable project support services to be provided.

Annex 1: Historical Sales

Vintage	Buyer	Date	Volume PVCs	Unit price (USD)*	Sale value (USD)*	Price to participants per PVC*	% Sale price received by participants
Sales: Pre-September 2020							
2012 - 2013	ZeroMission (Opus)	6/04/2018	1,300	██████	██████████	██████	54%
2012 - 2013	ZeroMission (Opus)	6/04/2018	140	██████	██████████	██████	54%
2012 - 2013	ZeroMission (Opus)	6/04/2018	4,110	██████	██████████	██████	54%
2012 - 2013	ZeroMission (Opus)	6/04/2018	800	██████	██████████	██████	54%
2012 - 2013	Ekos	9/05/2018	484	██████	██████████	██████	52%
2012 - 2013	ZeroMission	27/07/2018	1,000	██████	██████████	██████	54%
2012 - 2013	ZeroMission (Nordax bank)	27/07/2018	427	██████	██████████	██████	54%
2012 - 2013	Ekos	28/09/2018	1,159	██████	██████████	██████	52%
2012 - 2013	ZeroMission	10/01/2019	4,727	██████	██████████	██████	55%
2012 - 2013	ZeroMission	10/01/2019	417	██████	██████████	██████	55%
2013 - 2014	ZeroMission	9/05/2019	500	██████	██████████	██████	55%
2012 - 2013 2013 - 2014	ZeroMission	9/05/2019	500	██████	██████████	██████	60%
2012 - 2013	ZeroMission	9/05/2019	1,352	██████	██████████	██████	60%
2012 - 2013 2013 - 2014 2015 - 2016	Ekos	28/06/2019	2,563	██████	██████████	██████	60%
2013 - 2014	ZeroMission	24/06/2019	5,001	██████	██████████	██████	60%
2013 - 2014 2014 - 2015	Myclimate	11/07/2019	31,621	██████	██████████	██████	60%
<i>Total Sales: Pre September 2020</i>			56,101		██████████		58%
Sales: September 2020-2024							
2013 - 2014	Stoke	16/12/2020	250	██████	██████████	██████	60%
2016 - 2017	ZeroMission	8/07/2021	5,000	██████	██████████	██████	60%
2013 - 2014 2015 - 2016	COTAP	14/10/2021	3,006	██████	██████████	██████	60%
2015 - 2016	eCoast Marine Consulting & Research	18/11/2021	48	██████	██████████	██████	60%
2016 - 2017 2016 - 2017	ZeroMission	24/02/2022	7,622	██████	██████████	██████	60%
2016 - 2017 2017 - 2018	ZeroMission	24/02/2022	5,500	██████	██████████	██████	60%
2017 - 2018	ZeroMission	31/05/2022	2,500	██████	██████████	██████	60%
2017 - 2018	ZeroMission	23/06/2022	1,015	██████	██████████	██████	60%
2015 - 2016	COTAP	15/07/2022	2,645	██████	██████████	██████	60%

2017 - 2018 2018 - 2019	ZeroMission	31/08/2022	10,909	████	████████	████	60%
2015 - 2016	Monte Velho Retreat *	20/11/2022	8	████	██████	████	60%
2018 - 2019	ZeroMission	1/12/2022	10,454	████	████████	████	60%
2015 - 2016	Matanivusi Resort - Fiji Islands	5/06/2023	144	████	██████	████	60%
2019 - 2020	Ekos	26/09/2023	5,121	████	████████	████	60%
2015 - 2016	ZeroMission **	18/10/2023	2,000	████	████████	████	60%
2015 - 2016 2018 - 2019 2019 - 2020	ZeroMission	26/03/2024	10,500	████	████████	████	60%
<i>Total Sales: September 2020-2024</i>			66,722		████████		60%
Cumulative Totals							
Total sales value (since project inception)					████████		
Total Credits Sold (since project inception)					122,823		
Total Credits Available for Sale (since project inception)					132,280		
Total Credits Unsold					9,457		

*Pricing reported for internal monitoring purposes only.