



CLINTON DEVELOPMENT INITIATIVE

Trees of Hope Plan Vivo Annual Report January 2014–December 2014

SUBMITTED JULY 2015

Contents

- 1.0 Background, Page 4
- 2.0 Key Developments in the Project, Page 4
 - 2.1 Payment for Ecosystem Services (PES), Page 4
 - 2.2 Value Addition & Diversification of Incomes, Page 5
 - 2.3 Change of Reporting Date, Page 5
- 3.0 Key Events in the Project, Page 5
 - 3.1 Stakeholder Visit to Trees of Hope Project, Page 5
- 4.0 Key Challenges, Page 6
 - 4.1 Increasing Demand for Participation, Page 6
 - 4.2 Plan Vivo Database Functionalities, Page 6
 - 4.3 Meeting Monitoring Targets, Page 6
 - 4.4 Selecting New Trees Species to Plant, Page 6
- 5.0 Activities, Total Project Size, and Participation, Page 6
 - 5.1 Woodlot, Page 7
 - 5.2 Dispersed Systematic Inter-Planting (DSI), Page 7
 - 5.3 Boundary Planting, Page 8
 - 5.4 Citrus Fruit Orchard, Page 9
 - 5.5 Mango Fruit Orchard, Page 9
- 6.0 Profile of Recruitment, Participation, and Project Size, Page 10
- 7.0 Sales of Plan Vivo Certificates, Page 11
- 8.0 Summary of Monitoring Results, Page 11
- 9.0 Payment for Ecosystem Services (PES) Update, Page 12
- 10.0 Ongoing Community Participation, Page 12
- 11.0 Breakdown of Operational Costs, Page 14
- 12.0 Appendices
 - 12.1 Appendix I: Budget, Page 15
 - 12.2 Appendix II: Historical Sales, Page 16
 - 12.3 Appendix III: Risk Buffer Summary Table, Page 18
 - 12.4 Appendix IV: Farmer Monitoring Results, Page 19

List of Tables and Figures

- Table 1: Summary Statistics, Page 3
- Table 2: Profile of Producers with PES Agreements, Page 10
- Table 3: Area Coverage for the Land-Use Systems, Page 10
- Table 4: Summary of Sales for 2014, Page 11
- Table 5: Summary of Reasons for Target Failure and Recommended Corrective Actions, Page 11
- Table 6: Summary Profile of Farmer Payments, Page 12
- Table 7: Content of Training Modules, Page 13

- Figure 1: How Farmers Benefit From Carbon Finance, Page 4
- Figure 2: Land Use Systems, Page 7
- Figure 3: A woodlot in Neno District, Page 7
- Figure 4: DSI system in Dowa District, Page 8
- Figure 5: Boundary Planting in Dowa District, Page 8
- Figure 6: Farmer Benito Kamoto's citrus tree orchard in Neno District, Page 9
- Figure 7: A grafted mango seedling, Page 9
- Figure 8: Mango Orchard in Neno District, Page 9
- Figure 9: Farmer Training Session, Page 13
- Figure 10: Local Program Monitor Training, Page 13

Table 1: Summary Statistics

Summary Statistics			
Reporting Period	1 st January, 2014 – 31 st December, 2014		
Technical Specifications in Use	<ol style="list-style-type: none"> 1. Woodlot 2. Boundary Planting (BP) 3. Dispersed Systematic Inter-Planting (DSI) 4. Citrus Orchard 5. Mango Orchard 		
Land-Use Specifications and Areas Under Management (ha) and (100 meter unit)			
	Total Area Under Management (ha) and (100 meter unit)	Area Under Management (ha) and (100 meter unit) added in Current Reporting Period	
<i>Woodlot, DSI, Mango Orchards, Citrus Orchards</i>	182.04 ha	0	
<i>Boundary Planting (BP)</i>	3,460.41 (100 meter units)	0	
Payment for Ecosystem Services (PES) Agreements in Numbers			
	Total PES Agreements for Project	Agreements from Current Reporting Period	Agreements for New Certificate Issuance
<i>Individual Smallholders</i>	478 farmers	0	0
<i>Farmer Groups</i>	21 farmer groups	0	0
TOTAL	499 farmers and groups	0	0
Certificates			
PES Payouts To Date (\$)	\$ 101,703.5308		
Plan Vivo Certificates Issued To Date	42,550 certificates		
Submission for Certificate Issuance for New Areas Under Management (tCO ₂)	0		

1.0 Background

Trees of Hope is a certified Payment for Ecosystem Services (PES) project being coordinated in Malawi by the Clinton Development Initiative (CDI), using the Plan Vivo Standard. Its main pursuit is to coordinate community-led efforts in climate change mitigation and adaptation through agroforestry and reforestation activities. It further strives to improve community livelihoods, not only through services derived from the tree-based land use systems, but also via facilitation of access to carbon finance from the sale of Plan Vivo Certificates. The program is currently operating in Dowa and Neno districts of central and southern Malawi, with the majority of the project beneficiaries located in Dowa. This report presents a general state of the project including developments, events and challenges besides other matters that occurred during the reporting period.

2.0 Key Developments in the Project

During the year, several developments took place in the project. The major ones are highlighted below:

2.1 Payment for Ecosystem Services (PES)

During the year, Trees of Hope Project made payments to individual producers and community groups holding Payment for Ecosystem Services (PES) agreements after meeting their monitoring targets. This was the second payment installation for farmers and groups meeting their targets. This payment means that farmers meeting their targets have now been paid 60% of the total money they will receive over the course of the project. This development not only offered extra motivation to the participating farmers to continue with project activities but also increased interest from non-project members in the communities to join the project. Informal qualitative interviews have shown the Trees of Hope team that farmers are benefiting from carbon finance in seven key ways and putting the money that they earn from their tree-based land use systems into: transportation, livestock, farm inputs, savings, education, connectivity and electricity, and household improvements. Details of these payments are shown in Appendix IV.

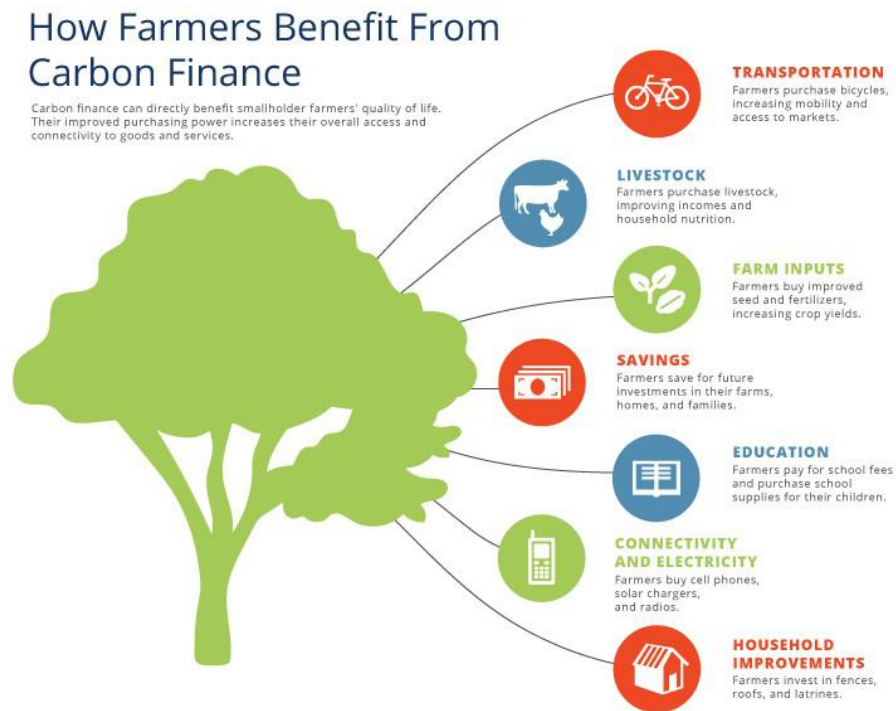


Figure 1: How Farmers Benefit from Carbon Finance

2.2 Value Addition & Diversification of Incomes

In its pursuit to broaden income streams for the farmers beyond payment for ecosystem services, the project is exploring commercially viable value addition. This work will involve identifying reliable domestic and regional market opportunities and assessment of appropriate processing technologies. Technologies that have been discussed include but are not limited to: apiculture, solar drying, jam or marmalade production, fruit juices, and mushrooms for both home consumption and sale at market. A handful of farmers have already begun pursuing these activities on their own but the Trees of Hope project aspires to help connect all of the farmers involved in the program to these opportunities if they wish.

2.3 Change of Reporting Date

2012- 2013 Reporting Period: It is standard practice for Plan Vivo projects to submit annual reports to Plan Vivo Foundation as a means to allow the Foundation to provide ongoing oversight of the various projects. A reporting date is normally agreed between the project and Plan Vivo Foundation and in the case of Trees of Hope project, April was the agreed month in which the annual report would be submitted to Plan Vivo Foundation. However, experience with the first reporting cycle, showed that this date was not convenient enough for submission of the annual report on grounds that the annual report needed to cover the planting period of the outgoing year in addition to being largely based on the monitoring data. Of late the planting season has been setting in late due to late onset of rains, in the process extending the season to around April and then monitoring is routinely planned to start after the planting season. The monitoring process including data management and processing takes about two months implying it goes well beyond the agreed reporting date. This necessitated the project to propose December as the month of submission of the annual report and this remains the new agreed reporting period with Plan Vivo Foundation.

2014 Reporting Period: During this reporting period Trees of Hope had a change in management. The project was without a direct manager for the last few months of the reporting period. Management was taken over by other CDI staff members in Malawi and New York. Trees of Hope took this as an opportunity to review some of the reporting forms and trainings materials and as a result of the transition, has submitted the report beyond the March 31, 2015 reporting deadline date.

2.4 Report Revisions

To date, the Trees of Hope project has counted both farmers under PES agreements and those on the waitlist in the totals of carbon sequestered and also area of planting in reports. While Trees of Hope does have a large number of farmers on our waitlist, and these farmers have also been monitored for many years, we decided that it would be clearer to report on the numbers for PES agreements instead of the combined number, to better reflect the actual situation. A few mistakes in the database were detected, that have since been corrected, as well as errors in reporting from the database to the annual reports, which have also been corrected.

Additionally, in the previous annual report, we noted that a group of farmers were going to be removed from the waitlist to meet the 20,000 issuance from the same reporting period. We had to re-allocate the farmers and community groups on that list, and have thus updated the list of farmers under PES agreements to reflect this reallocation. This was done because of a transition in management and an unclear rationale behind why the first group was selected to be signed up under PES agreements and removed from the waitlist. The current list of 499 farmers and community groups reflect farmers that are meeting their monitoring targets and additional criteria for being removed from the waitlist that new Trees of Hope management created to ensure fairness, consistency, and performance based decisions, in line with the Plan Vivo Standard.

3.0 Key Events in the Project

In the course of its work, Trees of Hope project witnesses various events and in the outgoing year, the following event deserves mention in this report.

3.1 Stakeholder Visit to Trees of Hope Project

During November 2014, one of the Trees of Hope carbon resellers, ZeroMission, along with stakeholder Max Hamburger, visited the project site. During the visit the parties were able to observe not only the importance of the carbon finance component and the added income that the system yields, but also the benefits on the environment. Farmers that have seen improvements in the micro-climates around their tree based land use systems, as well as reduced soil erosion, improved soil organic matter increasing staple crop yields. They have also seen improvements in access to resources including but not limited to: fuelwood, food or fruit, and traditional medicine, which can all also contribute to additional incomes for farmers.

4.0 Key Challenges

4.1 Increasing Demand for Participation

The project continues to contend with overwhelming demand from communities to be considered for registration with the project particularly now following the recent successful payment of carbon finance to some farmers. However, the project has been unable to scale up due to lack in consistent and high quantity of sales for the project's Plan Vivo certificates from customers. Meanwhile, every effort is made by the project to ensure fairness in selection of producers from the waiting list for PES agreements and eventual payments. Selection is done on merit by considering factors including length of stay on the waiting list (first-come-first-served basis), ability to meet monitoring targets and general commitment towards project's activities. As of yet, Trees of Hope has 2,886 active users. At this point, Trees of Hope has halted further expansion of the project. Trees of Hope field officers are focused on the quality of training for the current group of farmers, both those receiving payments and those on the waitlist. They are also working on making it abundantly clear to all farmers in the program what the state of sales is, what is happening with project expansion, and managing expectations for the farmers on the waitlist about the timeline for being taken off the waitlist and officially signed up under PES agreements.

4.2 Plan Vivo Database Functionalities

As in all Plan Vivo projects, data collection, storage and processing is one of the most important aspects of project delivery. Similarly, Trees of Hope project manages all its data in a generic database that tracks all vital operations of the project. However, the designers of the database and its stakeholders are looking to make improvements to this current database to easily handle cases that might not have been initially foreseen, such as situations where a producer has more than one land use system in one *plan vivo*, but monitored independently. Such cases under the Trees of Hope project are common in an effort to allow farmers wider choices on the available land use systems. The project is focusing on ensuring that all farmer information, including carbon sequestered and monitoring targets met, is being recorded and managed by the Trees of Hope managers.

4.3 Meeting Monitoring Targets

Trees of Hope field officers have noted that across certain geographic regions of the project, farmers participating in the project are unable to meet monitoring targets consistently. There have been several reasons explaining the death of both mature trees and seedlings including erratic weather patterns and pests. Each season the trees are replaced and thus targets are still being met, but the program is trying to identify a better way to ensure that trees are living past the first 1-3 years and selecting alternative species where there are persistent problems.

4.4 Selecting New Trees Species to Plant

Trees of Hope has recognized a need to incorporate new tree varieties beyond those traditionally extended to farmers through the project. The team in Malawi will work with communities and Plan Vivo to identify which trees will best suit their needs and also meet the requirements of the Plan Vivo Standard.

5.0 Activities, Total Project Size, and Participation

Producers in the program are engaged in any of the five land use systems briefly described below. A producer can engage in more than one land use system. Figure 2 shows the monetary and environmental benefits of each land use system.

Land Use Systems

Each land-use system offers unique ecosystem and livelihood benefits to the smallholder farmers

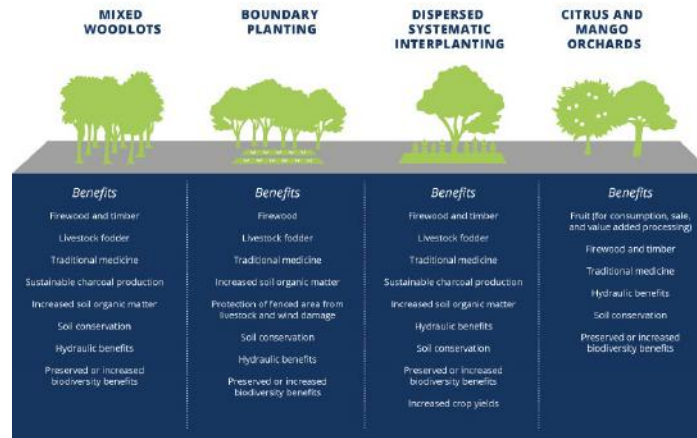


Figure 2: Land Use Systems

5.1 Woodlot

The woodlot land use system involves the establishment of indigenous and/or naturalised tree species on a plot in a systematic manner following approved technical specifications that include planting the trees at a density of 2500 per hectare. Besides payment for ecosystem services, this land use system is established also for construction materials, reducing soil erosion by minimizing surface run off caused by water and wind, shade, medicines and aesthetic value to landscape. Tree species in use include *Acacia polyacantha*, *Melia azederach*, *Senna siamea* and *Senna spectabilis*. Species are selected based on farmer preference and ecological constraints of the landscape. Other species included in the technical specifications for Plan Vivo and the original carbon modelling summary include: *Azadirachta indica*, *Albizia lebbek*, *Khaya anotheca*, *Toona ciliate*, and *Pterocarpus angolensis*. Figure 3 below shows a *Senna siamea* woodlot in Neno district.



Figure 3: A woodlot in Neno District

5.2 Dispersed Systematic Inter-Planting (DSI)

This system involves inter-planting fertility-improving trees with arable crops, ideal for producers with limited degraded land. The primary purpose of this system is to improve soil fertility through addition of degradable organic matter to the soil and biological nitrogen fixation. The deep-rooting tree species absorb nutrients from deep soil layers, unreachable by the shallow-rooted arable crop, bringing them to the surface for the benefit of the crop. The main tree species for the system is *Faidherbia albida* which is initially established at a density of 200 trees per hectare. This species is able to survive in regions with limited rainfall, and also has the ability to shed its leaves in the rainy season and keep them in the dry season. *Faidherbia albida* is also recognized for its use as livestock fodder. Figure 4 below shows a DSI system in Dowa district.



Figure 4: DSI system in Dowa District

5.3 Boundary Planting

As the name implies, this involves planting selected tree species in a linear fashion around amenities but is commonly used around producers' farms for boundary demarcation. The tree species used are carefully chosen to avoid those that would compete with crops. Such tree species also enhance soil fertility through nitrogen fixation and addition of valuable soil organic matter. The species being used in the program currently include *Acacia polyacantha*, *Senna spectabilis* and *Senna siamea*, which are established at a spacing of 3 metres in a single row. Figure 5 below shows boundary planting in Dowa district.



Figure 5: Boundary Planting in Dowa District

5.4 Citrus Fruit Orchard

This is one of the fruit-based land use systems in the program. It involves the establishment of citrus orchards using high-value scion varieties to graft onto local rootstock, making trees that produce quality fruit and are also resilient to local climatic conditions. Grafted trees fruit in approximately 3 years, compared to nearly 5 years until non-grafted varieties bear fruit. Many farmers now have citrus trees that are bearing fruit. To help farmers diversify their incomes and support their livelihood improvements, the Trees of Hope project will look towards engaging farmers in projects to add value to, or preserve their fruit, such as making marmalades and juices. The types currently being used in the program are *Citrus sinensis* and *Citrus reticulata* established at a density of 400 trees per hectare. Besides carbon finance, the system will improve nutrition of households through consumption of the fruits and also increase their income through selling fruit. Figure 6 below shows a farmer's young citrus orchard in Neno district.



Figure 6: Farmer Benito Kamoto's citrus tree orchard in Neno District

5.5 Mango Fruit Orchard

Producers using this technical specification establish mango orchards with high-value cultivars, which are less fibrous and typically larger than local cultivars. Improved mango variety scions are grafted onto local rootstock to reduce the period to fruiting of the tree -to about 4 years- in comparison with local un-grafted mangoes which take longer. Currently the project has some orchards that are coming into fruit-bearing age and farmers have started harvesting some fruits and selling locally. As production peaks up, the project is planning to engage the producers in solar drying of the fruit which might not sale profitably as fresh fruit. This initiative will increase farmer incomes and reduce wastage of mango fruits which cannot be sold as fresh produce, which is a common marketing challenge in the area affecting even non-project mangoes. The improved varieties in use include Kent, Zill, Tommy Atkins and Erwin. Figures 7 and 8 below show a grafted mango seedling and mango orchard in Neno district.



Figure 7: A grafted mango seedling & Figure 8: Mango Orchard in Neno District

6.0 Profile of Recruitment, Participation, and Project Size

Producers registered with the program, each with a single plan vivo, are either individual households or communal groups. Producers can opt for more than one land use system and this is common among individual producers, while communal groups are typically engaged in woodlot land use system. Table 2 shows producers and community groups with registered PES agreements.

Table 2: Profile of Producers with Registered PES Agreements

STATISTICS	VALUE
Total Number of Producers	499
Number of Community Groups	21
Number of Individual Producers	478

The total area coverage for the project as contributed to by each land use system is shown in Table 3 below. It should be noted that these data in Table 3 below includes even producers without PES agreements that form a waiting list for registration.

Table 3: Area Coverage for the Land-Use Systems

LAND-USE SYSTEM	UNITS	AREA COVERAGE FOR FARMERS WITH PES AGREEMENTS	SEQUESTRATION POTENTIAL (tCO ₂ per ha or 100m unit)
Woodlot	Ha	79.1	181.76
DSI	Ha	86.62	90.31
Boundary Planting	100 meter units	3,460.41	10.93
Citrus Orchard	Ha	11.99	68.31
Mango Orchard	Ha	4.33	104.98

7.0 Sales of Plan Vivo Certificates

Sales volumes during the 12-month reporting period were consistent with sales in the previous reporting period. See Appendix II for full details of historical sales.

Table 4: Summary of Sales for 2014

DATE	PURCHASER	CERTIFICATES SOLD (tCO ₂)	PRICE PER CERTIFICATE	Currency	TOTAL USD RECEIVED
April 2014	ZeroMissionAB	300			
April 2014	ZeroMissionAB	10000			
May 2014	ZeroMissionAB	700			
June 2014	COTAP	524			
June 2014	ZeroMissionAB	1500			
August 2014	ZeroMissionAB	450			
November 2014	ZeroMissionAB	1287			
TOTAL		14,761 certificates			

8.0 Summary of Monitoring Results

The current monitoring targets are based on farmers meeting minimum numbers of live trees on plots shown as (MT – Monitoring Target) in the appendices, which are then compared to the actual number of trees on that plot designated as (MR – Monitoring Result) in the appendices. The project does not experience serious challenges to the monitoring process because it has over the years built enough community-based capacity for this exercise through involvement of Local Program Monitors (LPMs) based in the communities.

In some limited cases, producers get monitored unsuccessfully where they fail to meet the set targets for specific monitoring periods. Such cases are attributed to factors outlined in Table 4 below where corrective remedies are also presented for producers to implement ahead of the next monitoring period.

Table 5: Summary of Reasons for Target Failure and Recommended Corrective Actions

NUMBER	REASON FOR TARGET FAILURE	RECOMMENDED CORRECTIVE ACTIONS
1	Drought, where young seedlings die under water stress	<ul style="list-style-type: none"> • Digging planting holes of the recommended size for adequate water capture. • Use of compost manure to enhance water retention within the rooting zone of the tree. • Early planting to take advantage of the full rainy season. • Introducing tree species that are more tolerant to drought.
2	Termite attack, which kills young seedlings	<ul style="list-style-type: none"> • Application of inorganic termiticides. • Use of organic termiticides like <i>Tephrosia vogelii</i> extracts. • Keeping grass mulch clear of the tree base.
3	Late planting	<ul style="list-style-type: none"> • Early land preparation for tree plots to avoid competition for the limited labour with arable crops later in the season. • Timely establishment of nurseries to have seedlings ready for planting at the beginning of the rainy season.

4	Flooding	<ul style="list-style-type: none"> Encouraging planting of more trees and grasses such as Vetiver to help absorb water during flooding season and minimize runoff.
5	Fire	<ul style="list-style-type: none"> Clear brush during dry seasons. In particularly prone regions, plant “fire breaks” of trees not particularly susceptible to burning.
6	Planted less than the target number of trees	<ul style="list-style-type: none"> Early land preparation to avoid crisis planting Establishment of enough seedlings for the planned planting

9.0 Payment for Ecosystem Services (PES) Update

The project made its payments to producers with PES agreements where community groups and individual farmers received their payments following meeting of their respective monitoring targets. Table 5 below shows a summary profile of these payments since the inception of the project.

Table 6: Summary Profile of Farmer Payments

TOTAL PAYMENTS (USD)	NUMBER OF COMMUNITY GROUPS	AMOUNT PAID TO COMMUNITY GROUPS	NUMBER OF INDIVIDUAL PRODUCERS PAID	AMOUNT PAID TO INDIVIDUAL PRODUCERS
101,703.53 USD	21	8,107.4 USD	478	93,596.13 USD

The project instituted a system to administer these payments to producers that involves a local bank, First Merchant Bank (FMB) where bank accounts in the names of all the producers are hosted. All payments are made through these accounts on instructions from the project in keeping with the monitoring results at a given monitoring period. Moving forward, the project will make payments to producers every August-September.

10.0 Ongoing Community Participation

To ensure effective community participation, emphasis is put on engaging communities and producers on various aspects of program delivery. For purposes of ensuring effective communication and easy access to program information, communities choose from amongst themselves, voluntary leaders called Local Program Monitors (LPMs), who coordinate the program at community level. Currently, the program has 42 such individuals who act as a link between the community, CDI, and other stakeholders. There are 12 LPM's in Upper Neno, 15 in Lower Neno and 15 and Dowa. Recognising the importance of knowledge in effective program delivery and sustainability in communities, meetings and training sessions are regularly organised that cover diverse issues. Figures 9 and 10 below shows farmer training sessions for farmers and Local Program Monitors.



Figure 9: Farmer Training Session



Figure 10: Local Program Monitor Training

After initial sensitizations meetings that are open to whole communities, specific training sessions are thereafter regularly conducted targeting the registered farmers and groups and Local Program Monitors (LPMs) to ensure producers understand the requirements of the program and carry out their activities in line with its principles. The LPMs receive more detailed and frequent training from CDI staff than producers, with the expectation that they in turn train fellow producers in the interest of sustainability. Several modules are covered in the trainings including those outlined in Table 6 below.

Table 7: Content of Training Modules

NUMBER	MODULE	BRIEF CONTENT AND RATIONALE
1	Climate change and rural livelihoods	Covers definition, causes and illustration of climate change effects with local indicators and its impact on rural livelihoods.
2	Climate change adaptation and mitigation	Presents possible strategies for avoiding further dangerous climate change and mechanisms to learn to live with the present effects. The role of trees in climate change management is discussed.
3	Trees of Hope Project: An Overview	Presents the objectives of the project and other building blocks of the program as a vehicle available to the communities to address climate change and safeguard and improve livelihoods.

4	The Plan Vivo System	Covers all tenets of the Plan Vivo system touching on all aspects from definition of a plan vivo to payment of carbon finance.
5	The concept of carbon trading	Introduces the new paradigm of carbon trading and carbon markets by defining the product to be produced by them as producers and outlining requirements of the market.
6	Tree nursery establishment and management	Looks at nursery techniques including choice of site, fencing, seed pre-treatment, media preparation, pot filling, sowing, development of root stocks, grafting, budding, root pruning, pest and disease management and hardening off.
7	Establishment and management	Covers selection of site, pegging and marking according to the technical specification, pitting, planting, mulching, pest and disease management, fire breaks, thinning and pruning.
8	Field monitoring	This outlines monitoring indicators and specifies what data are to be collected, highlighting the target for each monitoring period.
9	Receipt of carbon finance	Covers mainly the dividing criteria between eligibility and non-eligibility for receipt of carbon finance depending on monitoring results. Also covers issues about farmer payment procedures.
10	Group dynamics	Looks at advantages of working in groups, group formation, group leadership, team building, motivation and trust building.

Through these trainings, producers understand climate change and its impact on their livelihoods including what roles they could play to minimise further damage to the climate system while on the other hand, living positively with it. They further understand what Trees of Hope, as a project stands for, coupled with good understanding of the Plan Vivo system which governs its operations in addition to having knowledge of carbon trading which was non-existent before these trainings. They now recognize they are engaged in a trade and not an aid system.

Courtesy of this training, communities are now able to establish and manage their own nurseries and plantations successfully with reduced supervision. The question of what it takes to qualify for farmer payments, is now better understood than before along with good knowledge of monitoring protocols on which the decision is based. Currently nursery establishment and management are done in community-based groups that are functional and cohesive, courtesy of the module on group dynamics. To keep track of trainings and meetings conducted in the program, special forms are used to record such events by recording among other things, the objectives of the event, facilitators, target audience, attendance and main resolutions.

11.0 Breakdown of Operational Costs

Finances for the project are handled by a central finance office that also manages finances for other projects under the Clinton Development Initiative (CDI) in Malawi. Appendix I shows the budget for the reporting period.

12.0 Appendices

12.1 Appendix I: Budget

Expense	
Total Personnel	\$124,464.64
Total Program and COGS	\$77,606.44
Total Office	\$26,703.78
Total Travel	\$30,184.21
Total Expenses	\$258,959.07

12.2 Appendix II: Historical Sales

Retirement Date	Vintage	Buyer / Account	No. PVCs	Serial Number
8-Jul-14	2010	COTAP	9	PV-PVC-MW-100000000000781-01012010-31122010-2052194-2052202-MER-0-A
9-Jul-14	2010	COTAP	207	PV-PVC-MW-100000000000781-01012010-31122010-2052203-2052409-MER-0-A
31-Jul-14	2010	COTAP	76	PV-PVC-MW-100000000000781-01012010-31122010-2052410-2052485-MER-0-A
31-Jul-14	2010	COTAP	232	PV-PVC-MW-100000000000781-01012010-31122010-2052486-2052717-MER-0-A
21-Jul-14	2010	ZeroMission AB	3,082	PV-PVC-MW-100000000000781-01012010-31122010-2052718-2055799-MER-0-A
-	2010	ZeroMission AB	394	PV-PVC-MW-100000000000781-01012010-31122010-2055800-2056193-MER-0-A
16-Nov-12	2010	ZeroMission AB	4,666	PV-PVC-MW-100000000000781-01012010-31122010-2056194-2060859-MER-0-A
16-Nov-12	2010	ZeroMission AB	600	PV-PVC-MW-100000000000781-01012010-31122010-2060860-2061459-MER-0-A
12-Dec-12	2010	ZeroMission AB	50	PV-PVC-MW-100000000000781-01012010-31122010-2061460-2061509-MER-0-A
12-Dec-12	2010	ZeroMission AB	14	PV-PVC-MW-100000000000781-01012010-31122010-2061510-2061523-MER-0-A
12-Dec-12	2010	ZeroMission AB	74	PV-PVC-MW-100000000000781-01012010-31122010-2061524-2061597-MER-0-A
-	2010	ZeroMission AB	596	PV-PVC-MW-100000000000781-01012010-31122010-2061598-2062193-MER-0-A
19-Apr-12	2010	ZeroMission AB	60	PV-PVC-MW-100000000000781-01012010-31122010-2062194-2062253-MER-0-A
18-Jun-12	2010	ZeroMission AB	352	PV-PVC-MW-100000000000781-01012010-31122010-2062254-2062605-MER-0-A
18-Jun-12	2010	ZeroMission AB	80	PV-PVC-MW-100000000000781-01012010-31122010-2062606-2062685-MER-0-A
18-Jun-12	2010	ZeroMission AB	8	PV-PVC-MW-100000000000781-01012010-31122010-2062686-2062693-MER-0-A
17-May-12	2010	AECOM	600	PV-PVC-MW-100000000000781-01012010-31122010-2062694-2063293-MER-0-A
18-Feb-13	2010	COzero Pty Ltd	100	PV-PVC-MW-100000000000781-01012010-31122010-2063294-2063393-MER-0-A
7-Nov-12	2010	ZeroMission AB	125	PV-PVC-MW-100000000000781-01012010-31122010-2063394-2063518-MER-0-A
7-Nov-12	2010	ZeroMission AB	137	PV-PVC-MW-100000000000781-01012010-31122010-2063519-2063655-MER-0-A
7-Nov-12	2010	ZeroMission AB	43	PV-PVC-MW-100000000000781-01012010-31122010-2063656-2063698-MER-0-A
7-Nov-12	2010	ZeroMission AB	65	PV-PVC-MW-100000000000781-01012010-31122010-2063699-2063763-MER-0-A
7-Nov-12	2010	ZeroMission AB	4	PV-PVC-MW-100000000000781-01012010-31122010-2063764-2063767-MER-0-A
7-Nov-12	2010	ZeroMission AB	151	PV-PVC-MW-100000000000781-01012010-31122010-2063768-2063918-MER-0-A
12-Dec-12	2010	ZeroMission AB	3	PV-PVC-MW-100000000000781-01012010-31122010-2063919-2063921-MER-0-A
12-Dec-12	2010	ZeroMission AB	99	PV-PVC-MW-100000000000781-01012010-31122010-2063922-2064020-MER-0-A
12-Dec-12	2010	ZeroMission AB	92	PV-PVC-MW-100000000000781-01012010-31122010-2064021-2064112-MER-0-A
12-Dec-12	2010	ZeroMission AB	19	PV-PVC-MW-100000000000781-01012010-31122010-2064113-2064131-MER-0-A
12-Dec-12	2010	ZeroMission AB	60	PV-PVC-MW-100000000000781-01012010-31122010-2064132-2064191-MER-0-A
12-Dec-12	2010	ZeroMission AB	67	PV-PVC-MW-100000000000781-01012010-31122010-2064192-2064258-MER-0-A
12-Dec-12	2010	ZeroMission AB	172	PV-PVC-MW-100000000000781-01012010-31122010-2064259-2064430-MER-0-A
12-Dec-12	2010	ZeroMission AB	31	PV-PVC-MW-100000000000781-01012010-31122010-2064431-2064461-MER-0-A
12-Dec-12	2010	ZeroMission AB	27	PV-PVC-MW-100000000000781-01012010-31122010-2064462-2064488-MER-0-A
-	2010	ZeroMission AB	5	PV-PVC-MW-100000000000781-01012010-31122010-2064489-2064493-MER-0-A
9-Jan-14	2010	COTAP	30	PV-PVC-MW-100000000000781-01012010-31122010-2064494-2064523-MER-0-A
9-Jan-14	2010	COTAP	252	PV-PVC-MW-100000000000781-01012010-31122010-2064524-2064775-MER-0-A
21-Jul-14	2010	ZeroMission AB	6,918	PV-PVC-MW-100000000000781-01012010-31122010-2064776-2071693-MER-0-A

Retirement Date	Vintage	Buyer / Account	No. PVCs	Serial Number
-	2010	ZeroMission AB	500	PV-PVC-MW-100000000000781-01012010-31122010-2071694-2072193-MER-0-A
Total (1st) Issuance - Vintage 2010			20000	

17-May-12	2010	United Bank of Carbon	11	PV-PVC-MW-100000000000781-01012010-31122010-2217532-2217542-MER-0-A
17-May-12	2010	United Bank of Carbon	27	PV-PVC-MW-100000000000781-01012010-31122010-2217543-2217569-MER-0-A
-	2010	United Bank of Carbon	8	PV-PVC-MW-100000000000781-01012010-31122010-2217615-2217622-MER-0-A
-	2010	United Bank of Carbon	332	PV-PVC-MW-100000000000781-01012010-31122010-2217750-2218081-MER-0-A
15-Mar-13	2010	COTAP	468	PV-PVC-MW-100000000000781-01012010-31122010-2218082-2218549-MER-0-A
21-Jul-14	2010	ZeroMission AB	700	PV-PVC-MW-100000000000781-01012010-31122010-2218550-2219249-MER-0-A
21-Jul-14	2010	ZeroMission AB	300	PV-PVC-MW-100000000000781-01012010-31122010-2219250-2219549-MER-0-A
-	2010	ZeroMission AB	532	PV-PVC-MW-100000000000781-01012010-31122010-2219550-2220081-MER-0-A
Total (2nd) Issuance - Vintage 2010 (b)			2550	

-	2013	ZeroMission AB	74	PV-PVC-MW-100000000000781-01012013-31122013-2851332-2851405-MER-0-A
-	2013	ZeroMission AB	450	PV-PVC-MW-100000000000781-01012013-31122013-2851406-2851855-MER-0-A
-	2013	ZeroMission AB	1287	PV-PVC-MW-100000000000781-01012013-31122013-2851856-2853142-MER-0-A
	2013	William J. Clinton Foundation	18189	PV-PVC-MW-100000000000781-01012013-31122013-2856548-2869831-MER-0-A
Total (3rd Issuance) - Vintage 2013			20000	

Total PVCs Issued			42550
--------------------------	--	--	--------------

12.3 Appendix III: Risk Buffer Summary Table

Technical Specification	Ha corresponding to farmers with PES contracts	Potential (tC/ha)	Potential (tCO ₂ /ha)*	Saleable tCO ₂ /ha (80%)	Total tCO ₂ Sequestered	Saleable tCO ₂ (80%)	Buffer Allocation (20%)
Woodlots	79.10	49.57	181.76	145.41	14376.95	11501.56	2875.39
Boundary Planting		57.63	211.31				
Dispersed Systematic Inter-planting (DSI)	86.62	24.63	90.31	72.25	7822.65	6258.12	1564.53
Mango Orchards	4.33	28.63	104.98	83.98	454.55	363.64	90.91
Citrus Orchards	11.99	18.63	68.31	54.65	819.04	655.23	163.81
Total Ha	182.04						
Technical Specification	100m segments corresponding to farmers with PES contracts	Potential (tC/100m)**	Potential (tCO ₂ /100m)*	Saleable tCO ₂ /ha (80%)	Total tCO ₂ Sequestered	Saleable tCO ₂ (80%)	Buffer Allocation (20%)
Boundary Planting	3460.41	2.98	10.93	8.74	37810.75	30248.60	7562.15
Total					61,284	49,027	12,257

* Conversion factor of 44/12 = approx. 3.67

12.4 Appendix IV: Farmer Monitoring Results and Payments

Project site	First name	Second name	Woodlot				Boundary planting				DSI				Mango				Citrus orchard				Total tCO2 sold	100% of Payment over 10 years
			A (ha)	MT	MR	Saleable	Dist (m)	MT	M R	Saleable	A (ha)	M T	M R	Saleable	A (ha)	M T	M R	Saleable	A (ha)	M T	M R	Saleable		
Lower Neno	Amos	Elias	0.2	250	500	30		0		0	0	0	0				0				0	30	108.6	
Lower Neno	Arosi	Master	0.4	500	1,000	60		0		0	0	0	0				0				0	60	217.2	
Lower Neno	Chimkwita	Village Forest	0.5	625	1,250	75		0		0	0	0	0				0				0	75	271.5	
Lower Neno	Elias	Chimphwitika	0.4	500	1,000	60		0		0	0	0	0				0				0	60	217.2	
Lower Neno	Esta	Mikiseni	0.2	250	500	30		0		0	0	0	0				0				0	30	108.6	
Lower Neno	Etaye	Kasamba	0.2	250	500	30		0		0	0	0	0				0				0	30	108.6	
Lower Neno	Fanny	Kanengo	0.2	250	500	30		0		0	0	0	0				0				0	30	108.6	
Lower Neno	Fernando	Sagula		0		0	9	153	300	72	0	0	0	0				0				72	260.64	
Lower Neno	Kachepatsonga	Village Forest	1	1250	2,500	150		0		0	0	0	0				0				0	150	543	
Lower Neno	Kayinga	Mikana		0		0		0		0	0	0	0				0	0.1		62	5.6	5.6	20.272	
Lower Neno	Konelia	Aizeki	0.5	625	1250	75		0		0	0	0	0				0				0	75	271.5	
Lower Neno	Laiton	Chole	0.4	500	1,000	60		0		0	0	0	0				0				0	60	217.2	
Lower Neno	Legio	ya Maria Forest	0.3	375	750	45		0		0	0	0	0				0				0	45	162.9	
Lower Neno	Lembani	Village Forest	4	5000	10,000	600		0		0	0	0	0				0				0	600	2172	
Lower Neno	Lewis	Malunga	0.3	375	750	45		0		0	0	0	0				0				0	45	162.9	
Lower Neno	Lisungwi	Primary	1	1250	2,500	150		0		0	0	0	0				0				0	150	543	
Lower Neno	Loyd	Vella		0		0	6.93	117.81	231	55.44	0	0	0	0				0				55.44	200.6928	
Lower Neno	Luciano	Thumba	0.3	375	750	45		0		0	0	0	0				0				0	45	162.9	
Lower Neno	MacNight	Kankhono		0		0	9	153	300	72	0	0	0	0				0				72	260.64	
Lower Neno	Madison	Malirana	0.5	625	1,250	75		0		0	0	0	0				0				0	75	271.5	
Lower Neno	Magdalena	Maulidi		0		0	3.48	59.16	116	27.84	0	0	0	0				0				27.84	100.7808	
Lower Neno	Nkhombe	Primary School	1	1250	2,500	150		0		0	0	0	0				0				0	150	543	
Lower Neno	Philip	Chimphonda	4	5000	10,000	600		0		0	0	0	0				0				0	600	2172	
Lower Neno	Rhoda	Khamula James	0.4	500	1,000	60		0		0	0	0	0				0				0	60	217.2	
Lower Neno	Stellia	Chimwayi	0.5	625	1,250	75		0		0	0	0	0				0				0	75	271.5	
Lower Neno	Thoza	Dimba	0.5	625	1,250	75		0		0	0	0	0				0				0	75	271.5	

Lower Neno	Vesto	Jonas	0.2	250	500	30			0		0	0	0	0				0	30	108.6			
Lower Neno	Wilson	Chimpesa	0.5	625	1250	75			0		0	0	0	0				0	75	271.5			
Lower Neno	Zindikirani	Chakwamba	0.2	250	500	30			0		0	0	0	0				0	30	108.6			
Upper Neno	Agnes	Namagona	0.13	162.5	300	19.5	0	0	0	0	0	0	0	0			0	0.16	8.96	28.46	103.0252		
Upper Neno	Agness	Frank	0.2	250	500	30	0	0	0	0	0	0	0	0				0	30	108.6			
Upper Neno	Alfred	Fred Phili		0		0	0	0	0	0	0	0	0	0	0.2	81	17		0	17	61.54		
Upper Neno	Alice	Mletseni		0		0	0	0	0	0	0	0	0	0			0	0.2	13.5	11.2	11.2	40.544	
Upper Neno	Benito	Kamoto		0		0	0	0	0	0	0	0	0	0	0.48	19.2	40.8	0.49	30.6	27.44	68.24	247.0288	
Upper Neno	Billiat	Taulo	0.24	300	600	36	0	0	0	0	0	0	0	0				0		36	130.32		
Upper Neno	Brighton	Gowelo		0		0	0	0	0	0	0	0	0	0			0	0.17	10.6	9.52	9.52	34.4624	
Upper Neno	Byson	Kanyenga	0.3	375	750	45	0	0	0	0	0	0	0	0				0		45	162.9		
Upper Neno	Charles	Katema		0		0	0	0	0	0	0	0	0	0				0	0.2	80	11.2	11.2	40.544
Upper Neno	Christopher	Sadwala		0		0	0	0	0	0	0	0	0	0				0	0.25	16.0	14	14	50.68
Upper Neno	Dave	Chikhosi	0.2	250	500	30	0	0	0	0	0	0	0	0				0		30	108.6		
Upper Neno	Denis	Suluma	0.14	175	370	21	0	0	0	0	0	0	0	0	0.13	50	11.05		0	32.05	116.021		
Upper Neno	Dorothy	Soko	0.5	625	1250	75	0	0	0	0	0	0	0	0				0		75	271.5		
Upper Neno	Edness	Kafumbi		0		0	0	0	0	0	0	0	0	0	0.25	10.0	21.25	0.16	10.0	8.96	30.21	109.3602	
Upper Neno	Egile	Joseph	0.1	125	250	15	0	0	0	0	0	0	0	0				0		15	54.3		
Upper Neno	Elias	Kaliwo		0		0	0	0	0	0	0	0	0	0	0.25	10.0	21.25		0	21.25	76.925		
Upper Neno	Elina	Gomani		0		0	0	0	0	0	0	0	0	0				0	0.2	12.5	11.2	11.2	40.544
Upper Neno	Elson	Kalupsya		0		0	0	0	0	0	0	0	0	0				0	0.16	10.0	8.96	8.96	32.4352
Upper Neno	Enifa	Makioni		0		0	0	0	0	0	0	0	0	0				0	0.2	12.5	11.2	11.2	40.544
Upper Neno	Esnat	Malinga		0		0	0	0	0	0	0	0	0	0				0	0.26	16.2	14.56	14.56	52.7072
Upper Neno	Esther	Tsegula		0		0	0	0	0	0	0	0	0	0				0	0.5	31.2	28	28	101.36
Upper Neno	Felix	Mkachuluka		0		0	0	0	0	0	0	0	0	0				0	0.16	10.0	8.96	8.96	32.4352
Upper Neno	Fred	Chiyendero		0		0	0	0	0	0	0	0	0	0				0	0.16	10.0	8.96	8.96	32.4352
Upper Neno	Fyson	Dulamanja		0		0	0	0	0	0	0	0	0	0				0	0.16	10.0	8.96	8.96	32.4352
Upper Neno	Gaton	Kondani	0.2	250	500	30	0	0	0	0	0	0	0	0				0		30	108.6		
Upper Neno	Gaton	Kingisi		0		0	0	0	0	0	0	0	0	0				0	0.16	10.0	8.96	8.96	32.4352
Upper Neno	George	Bonongwe		0		0	0	0	0	0	0	0	0	0	0.25	10.0	21.25		0	21.25	76.925		
Upper Neno	George	Dube	0.18	225	460	27	0	0	0	0	0	0	0	0				0		27	97.74		
Upper Neno	Gloria	Sodzapanja		0		0	0	0	0	0	0	0	0	0				0	0.14	86	7.84	7.84	28.3808

Upper Neno	Gosten	Davide	0.2	250	500	30	0	0	0	0	0	0	0	0	0	0	0	0	0	30	108.6	
Upper Neno	Hunter	Kanyenga	0.8	1000	2000	120	0	0	0	0	0	0	0	0	0	0	0	0.8	506	44.8	164.8	596.576
Upper Neno	Isaac	Kazembe		0		0	0	0	0	0	0	0	0	0	0	0	0	0.19	120	10.64	10.64	38.5168
Upper Neno	Jailos	Kungade	0.3	375	750	45	0	0	0	0	0	0	0	0	0	0	0			0	45	162.9
Upper Neno	John	Kapinda	0.26	325	650	39	0	0	0	0	0	0	0	0	0	0	0			0	39	141.18
Upper Neno	Jonas	Ezala		0		0	0	0	0	0	0	0	0	0	0	0	0	0.1	58	5.6	5.6	20.272
Upper Neno	Joseph	Mgogodo	0.2	250	500	30	0	0	0	0	0	0	0	0	0	0	0			0	30	108.6
Upper Neno	Juliano	Nenula		0		0	0	0	0	0	0	0	0	0	0	0	0	0.32	200	17.92	17.92	64.8704
Upper Neno	Julio	Malundu		0		0	0	0	0	0	0	0	0	0	0	0	0	0.16	100	8.96	8.96	32.4352
Upper Neno	Justine	Magombo		0		0	0	0	0	0	0	0	0	0	0	0	0	0.2	125	11.2	11.2	40.544
Upper Neno	Kalinde	Village Forest	0.2	250	500	30	0	0	0	0	0	0	0	0	0	0	0			0	30	108.6
Upper Neno	Kesten	Brightone		0		0	0	0	0	0	0	0	0	0	0	0	0	0.16	100	8.96	8.96	32.4352
Upper Neno	Kingsley	Letulo		0		0	0	0	0	0	0	0	0	0	0.2	80	17			0	17	61.54
Upper Neno	Lackson	Kamoto		0		0	0	0	0	0	0	0	0	0	0.25	100	21.25	0.19	120	10.64	31.89	115.4418
Upper Neno	Lawrence	Chimphamba	0.2	250	500	30	0	0	0	0	0	0	0	0	0.2	100	17			0	47	170.14
Upper Neno	Lekeleni	Kamoto		0		0	0	0	0	0	0	0	0	0			0	0.25	150	14	14	50.68
Upper Neno	Lenard	Minjale		0		0	0	0	0	0	0	0	0	0			0	0.28	180	15.68	15.68	56.7616
Upper Neno	Linley	Wyson		0		0	0	0	0	0	0	0	0	0			0	0.23	144	12.88	12.88	46.6256
Upper Neno	Luciano	Mpombera	0.1	125	250	15	0	0	0	0	0	0	0	0			0			0	15	54.3
Upper Neno	Lucius	Chifuka		0		0	0	0	0	0	0	0	0	0	0.2	80	17			0	17	61.54
Upper Neno	Lucius	Seleman		0		0	0	0	0	0	0	0	0	0			0	0.16	100	8.96	8.96	32.4352
Upper Neno	Lucy	Kampezeni		0		0	0	0	0	0	0	0	0	0			0	0.5	312	28	28	101.36
Upper Neno	M'nchokadala	F.School	0.2	250	500	30	0	0	0	0	0	0	0	0			0			0	30	108.6
Upper Neno	Magret	Mkandawile	0.1	125	250	15	0	0	0	0	0	0	0	0			0			0	15	54.3
Upper Neno	Makali	F.P. School		0		0	0	0	0	0	0	0	0	0			0	0.2	125	11.2	11.2	40.544
Upper Neno	Marsen	Nyambi		0		0	0	0	0	0	0	0	0	0	0.25	100	21.25	0.16	100	8.96	30.21	109.3602
Upper Neno	Martha	Nguenda		0		0	0	0	0	0	0	0	0	0	0.2	80	17			0	17	61.54
Upper Neno	Master	George	0.2	250	500	30	0	0	0	0	0	0	0	0			0			0	30	108.6
Upper Neno	Mataliya	Chigona		0		0	0	0	0	0	0	0	0	0			0	0.2	125	11.2	11.2	40.544
Upper Neno	Mataliya	Chigona		0		0	0	0	0	0	0	0	0	0			0	0.2	125	11.2	11.2	40.544
Upper Neno	Mcnight	Luka	0.15	187.5	350	22.5	0	0	0	0	0	0	0	0	0.2	80	17			0	39.5	142.99
Upper Neno	Napolo	Hiwa		0		0	0	0	0	0	0	0	0	0			0	0.16	100	8.96	8.96	32.4352

Upper Neno	Nedson	Kuyenda	0.1	125	250	15	0	0	0	0	0	0	0	0	0	0	0	0	0	0	15	54.3	
Upper Neno	Pastor Titus	Ntata		0		0	0	0	0	0	0	0	0	0	0	0	0	0.5	319	28	28	101.36	
Upper Neno	Paul	Maseko		0		0	0	0	0	0	0	0	0	0	0	0	0	0.2	125	11.2	11.2	40.544	
Upper Neno	Peter	Masauko		0		0	0	0	0	0	0	0	0	0	0	0	0	0.13	81	7.28	7.28	26.3536	
Upper Neno	Peter	Mabedi		0		0	0	0	0	0	0	0	0	0	0.13	50	11.05			0	11.05	40.001	
Upper Neno	Petro	Simon		0		0	0	0	0	0	0	0	0	0	0	0	0	0.15	81	8.4	8.4	30.408	
Upper Neno	Polina	Galauza	0.2	250	500	30	0	0	0	0	0	0	0	0	0	0	0	0.32	200	17.92	47.92	173.4704	
Upper Neno	Radson	Daudi		0		0	0	0	0	0	0	0	0	0	0	0	0	0.3	188	16.8	16.8	60.816	
Upper Neno	Rose	Chinkwita		0		0	0	0	0	0	0	0	0	0	0.25	100	21.25	0.23	144	12.88	34.13	123.5506	
Upper Neno	Rose	June	0.2	250	500	30	0	0	0	0	0	0	0	0	0	0	0			0	30	108.6	
Upper Neno	Samson	Ezala		0		0	0	0	0	0	0	0	0	0	0	0	0	0.14	87	7.84	7.84	28.3808	
Upper Neno	Shadrack	Chikungu		0		0	0	0	0	0	0	0	0	0	0.15	60	12.75			0	12.75	46.155	
Upper Neno	Simon	Chikapa		0		0	0	0	0	0	0	0	0	0	0.2	80	17			0	17	61.54	
Upper Neno	Soveliano	Kadzuwa	0.2	250	500	30	0	0	0	0	0	0	0	0	0	0	0	0.2	80	11.2	41.2	149.144	
Upper Neno	Stanley	Thondoya		0		0	0	0	0	0	0	0	0	0	0	0	0	0.9	562	50.4	50.4	182.448	
Upper Neno	Stephen	Makwinja		0		0	0	0	0	0	0	0	0	0	0	0	0	0.16	100	8.96	8.96	32.4352	
Upper Neno	Thomas	Bandford		0		0	0	0	0	0	0	0	0	0	0	0	0	0.2	125	11.2	11.2	40.544	
Upper Neno	Wakison	Kadaonanyi	0.1	125	250	15	0	0	0	0	0	0	0	0	0	0	0			0	15	54.3	
Upper Neno	Wilson	Kadzanja	0.2	250	500	30	0	0	0	0	0	0	0	0	0.16	60	13.6	0.16	100	8.96	52.56	190.2672	
Upper Neno	Wingford	Chiyendero		0		0	0	0	0	0	0	0	0	0	0.13	50	11.05			0	11.05	40.001	
Upper Neno	Yonas	William		0		0	0	0	0	0	0	0	0	0	0.25	100	21.25			0	21.25	76.925	
Upper Neno	Zakaliya	Goliat	0.1	125	250	15	0	0	0	0	0	0	0	0	0	0	0	0.11	46	6.16	21.16	76.5992	
Dowa	Afete	Nyirenda	0.4	500	1000	60	0.00	0		0		0		0		0				0	60	217.2	
Dowa	Agness	Yotamu		0		0	10.20	173.4		81.6	0.4	40	80	28.8			0				0	110.4	399.648
Dowa	Alan	Banda		0		0	6.12	104.04	0	48.96		0		0			0				0	48.96	177.2352
Dowa	Alan	Chapondapo	0.2	250	501	30	0.00	0		0		0		0			0				0	30	108.6
Dowa	Alikanjelo	Lungu		0		0	4.08	69.36		32.64	1	100	200	72			0				0	104.64	378.7968
Dowa	Aliyele	Chavala		0		0	5.10	86.7		40.8		0		0			0				0	40.8	147.696
Dowa	Amon	Josephy		0		0	8.16	138.72		65.28		0		0			0				0	65.28	236.3136
Dowa	Amon	Levison		0		0	5.10	86.7		40.8	0.5	50	100	36			0				0	76.8	278.016
Dowa	Anderson	Binalison		0		0	19.38	329.46	0	155.04		0		0			0				0	155.04	561.2448
Dowa	Antanazio	Berenado		0		0	6.39	108.63	0	51.12	1	100	200	72			0				0	123.12	445.6944

Dowa	Anthony	Rabison		0		0	13.26	225.42		106.08		0		0				0	106.08	384.0096
Dowa	Benadeta	Hara	0.4	500	1000	60	0.00	0		0		0		0				0	60	217.2
Dowa	Bezita	Mayaniakac hepa		0		0	8.16	138.72		65.28		0		0				0	65.28	236.3136
Dowa	Binalison	Gerdinala	0.5	625	1250	75	0.00	0		0		0		0				0	75	271.5
Dowa	Bizalieli	Tambala	0.5	625	1250	75	0.00	0		0		0		0				0	75	271.5
Dowa	Blackson	Matsita		0		0	9.18	156.06		73.44	1.5	150	300	108				0	181.44	656.8128
Dowa	Brainet	Banda		0		0	7.14	121.38	0	57.12		0		0				0	57.12	206.7744
Dowa	Breckson	Nambamba		0		0	8.16	138.72		65.28	1.2	120	240	86.4				0	151.68	549.0816
Dowa	Bulainati	Nyirenda	0.4	500	1000	60	0.00	0		0		0		0				0	60	217.2
Dowa	Buleya	Chunga		0		0	7.14	121.38		57.12		0		0				0	57.12	206.7744
Dowa	Butulosi	Rabison		0		0	16.32	277.44		130.56		0		0				0	130.56	472.6272
Dowa	Chaguza	Daniel		0		0	8.16	138.72		65.28		0		0				0	65.28	236.3136
Dowa	Chanika	Club	1.3	1625	3250	195	0.00	0		0		0		0				0	195	705.9
Dowa	Charles	Chakuuma		0		0	9.18	156.06		73.44		0		0				0	73.44	265.8528
Dowa	Chatanga	club	1.6	2000	4000	240	0.00	0		0		0		0				0	240	868.8
Dowa	Chateka	Palawo		0		0	12.24	208.08		97.92		0		0				0	97.92	354.4704
Dowa	Chidandale	Tsambe		0		0	15.30	260.1		122.4		0		0				0	122.4	443.088
Dowa	Chikaiko	Phelekena		0		0	18.36	312.12		146.88		0		0				0	146.88	531.7056
Dowa	Chikweza	Weluzani		0		0	7.14	121.38		57.12		0		0				0	57.12	206.7744
Dowa	Chinkhota	club	0.6	750	1500	90	0.00	0		0		0		0				0	90	325.8
Dowa	Chinthu	Club	1.3	1625	3250	195	0.00	0		0		0		0				0	195	705.9
Dowa	Chisisi	Gama		0		0	15.30	260.1		122.4		0		0				0	122.4	443.088
Dowa	Christina	Josephy		0		0	8.16	138.72		65.28		0		0				0	65.28	236.3136
Dowa	Christing	Kamzati		0		0	11.25	191.25		90		0		0				0	90	325.8
Dowa	Chrisy	Kachigwada	0.5	625	1250	75	0.00	0		0		0		0				0	75	271.5
Dowa	Cosmas	Banda		0		0	22.44	381.48	0	179.52		0		0				0	179.52	649.8624
Dowa	Cosmas	Kadza		0		0	8.16	138.72		65.28		0		0				0	65.28	236.3136
Dowa	Daniel	Esau		0		0	9.18	156.06		73.44		0		0				0	73.44	265.8528
Dowa	Daniel	Kamzati		0		0	8.16	138.72		65.28		0		0				0	65.28	236.3136
Dowa	Daniel	Sekanakoni		0		0	24.48	416.16		195.84		0		0				0	195.84	708.9408
Dowa	Delifa	Sainani		0		0	5.10	86.7		40.8		0		0				0	40.8	147.696
Dowa	Deness	Kagona		0		0	12.24	208.08		97.92	1.1	110	222	79.2				0	177.12	641.1744
Dowa	Doliya	Yolamu	0.4	500	1000	60	0.00	0		0		0		0				0	60	217.2

Dowa	Edinas	Jeke		0		0	7.14	121.38		57.12		0		0				0	57.12	206.7744
Dowa	Edward	Chatanga		0		0	5.10	86.7		40.8		0		0				0	40.8	147.696
Dowa	Edward	Jeputala		0		0	7.14	121.38		57.12		0		0				0	57.12	206.7744
Dowa	Emelida	Wiziton		0		0	14.28	242.76		114.24		0		0				0	114.24	413.5488
Dowa	Esau	Banda		0		0	7.14	121.38	0	57.12		0		0				0	57.12	206.7744
Dowa	Esau	Kaputa		0		0	6.12	104.04		48.96		0		0				0	48.96	177.2352
Dowa	Evance	Kadzakwawo		0		0	10.20	173.4		81.6		0		0				0	81.6	295.392
Dowa	Ezeneti	Baison		0		0	6.00	102	0	48		0		0				0	48	173.76
Dowa	Faison	Sayendani		0		0	23.46	398.82		187.68		0		0				0	187.68	679.4016
Dowa	Felex	Chikombole		0		0	12.24	208.08		97.92		0		0				0	97.92	354.4704
Dowa	Firimon	Banda		0		0	7.14	121.38	0	57.12		0		0				0	57.12	206.7744
Dowa	Flaswell	Malaitcha	0.5	625	1250	75	0.00	0		0		0		0				0	75	271.5
Dowa	Flywel	Kosamu		0		0	7.14	121.38		57.12		0		0				0	57.12	206.7744
Dowa	Fodala	Laisi	1	1250	2500	150	0.00	0		0		0		0				0	150	543
Dowa	Frank	Solomon		0		0	8.16	138.72		65.28	1	100	200	72				0	137.28	496.9536
Dowa	Fred	Chakuuma		0		0	7.14	121.38		57.12		0		0				0	57.12	206.7744
Dowa	Fredrick	Kathumba	0.4	500	1000	60	0.00	0		0		0		0				0	60	217.2
Dowa	Fyson	Mphanda		0		0	6.12	104.04		48.96	2	200	400	144				0	192.96	698.5152
Dowa	Gabiano	Kazembe	0.52	650	1300	78	0.00	0		0		0		0				0	78	282.36
Dowa	Gelevazio	Banda		0		0	8.16	138.72	0	65.28		0		0				0	65.28	236.3136
Dowa	Gereshani	Chimbowa		0		0	5.10	86.7		40.8	0.4	40	80	28.8				0	69.6	251.952
Dowa	Gladys	Katutula	1	1250	2500	150	13.26	225.42		106.08		0		0				0	256.08	927.0096
Dowa	Godfrey	Mayaniakac hepa		0		0	8.16	138.72		65.28		0		0				0	65.28	236.3136
Dowa	Gradwell	Forster		0		0	7.14	121.38		57.12		0		0				0	57.12	206.7744
Dowa	Grecian	Mkuzi		0		0	7.14	121.38		57.12		0		0				0	57.12	206.7744
Dowa	Jailosi	Esau		0		0	5.10	86.7		40.8		0		0				0	40.8	147.696
Dowa	Jason	Kalulu	0.3	375	750	45	0.00	0		0		0		0				0	45	162.9
Dowa	Jason	Mkwezalamba		0		0	6.00	102		48		0		0				0	48	173.76
Dowa	Jaziel	Chisinga		0		0	10.20	173.4		81.6	1.3	130	260	93.6				0	175.2	634.224
Dowa	Jaziel	Lungu		0		0	8.16	138.72		65.28		0		0				0	65.28	236.3136
Dowa	Jeffly	Daniel		0		0	6.12	104.04		48.96	0.8	80	160	57.6				0	106.56	385.7472
Dowa	Jeke	Kolosi		0		0	8.16	138.72		65.28		0		0				0	65.28	236.3136
Dowa	Jekemu	Billy		0		0	6.12	104.04	0	48.96		0		0				0	48.96	177.2352

Dowa	John	Chabwera	0.6	750	1506	90	0.00	0	0	0	0	0	0	0	0	0	0	0	0	90	325.8
Dowa	Jonasi	Kasomeka		0		0	8.16	138.72	65.28	0	0				0				0	65.28	236.3136
Dowa	Josamu	Chimkoka		0		0	6.12	104.04	48.96	0	0				0				0	48.96	177.2352
Dowa	Josophat	Katsukunya		0		0	9.18	156.06	73.44	0	0				0				0	73.44	265.8528
Dowa	Julia	James		0		0	21.42	364.14	171.36	0	0				0				0	171.36	620.3232
Dowa	Kachinga	Nkhoma		0		0	8.16	138.72	65.28	2	20	40	144		0				0	209.28	757.5936
Dowa	Kachingong'o	Ablam		0		0	25.50	433.5	204	0	0				0				0	204	738.48
Dowa	Kachingwe	Dama		0		0	9.18	156.06	73.44	0	0				0				0	73.44	265.8528
Dowa	Kachola	Josephy		0		0	7.14	121.38	57.12	0	0				0				0	57.12	206.7744
Dowa	Kafalilani	Dzuwa		0		0	19.38	329.46	155.04	0	0				0				0	155.04	561.2448
Dowa	Kamuyeseni	Chatanga		0		0	9.18	156.06	73.44	0	0				0				0	73.44	265.8528
Dowa	Kanjado	Kaliyopa	0.5	625	1250	75	0.00	0	0	0	0	0	0		0				0	75	271.5
Dowa	Kaponya	club	1	1250	2500	150	0.00	0	0	0	0	0	0		0				0	150	543
Dowa	Kashangula	Betha		0		0	12.24	208.08	97.92	0	0				0				0	97.92	354.4704
Dowa	Kingston	Chatanga		0		0	23.46	398.82	187.68	2	20	40	144		0				0	331.68	1200.6816
Dowa	Kingston	Kangulu		0		0	23.46	398.82	187.68	0	0				0				0	187.68	679.4016
Dowa	Kondwelani	Henery		0		0	9.18	156.06	73.44	0	0				0				0	73.44	265.8528
Dowa	Kondwerani	Chakuuma		0		0	4.08	69.36	32.64	0	0				0				0	32.64	118.1568
Dowa	Kondwerani	Chimwaza		0		0	6.12	104.04	48.96	0	0				0				0	48.96	177.2352
Dowa	Lambulani	Lyson		0		0	16.32	277.44	130.56	0	0				0				0	130.56	472.6272
Dowa	Lameck	Kaponya		0		0	9.18	156.06	73.44	0	0				0				0	73.44	265.8528
Dowa	Lamiton	Chipewa		0		0	5.10	86.7	40.8	0.4	40	80	28.8		0				0	69.6	251.952
Dowa	Lemison	Limunga	0.4	500	1000	60	0.00	0	0	0	0	0	0		0				0	60	217.2
Dowa	Leneli	Mariko		0		0	9.18	156.06	73.44	0	0				0				0	73.44	265.8528
Dowa	Levison	Ablam		0		0	16.32	277.44	130.56	2.5	25	50	180		0				0	310.56	1124.2272
Dowa	Levison	Kanthenga		0		0	12.24	208.08	97.92	2	20	40	144		0				0	241.92	875.7504
Dowa	Limbikani	Kanthenga		0		0	6.12	104.04	48.96	0	0				0				0	48.96	177.2352
Dowa	Lita	Dzanjalimodzi		0		0	9.18	156.06	73.44	0.5	50	100	36		0				0	109.44	396.1728
Dowa	Litchad	Josamu		0		0	6.12	104.04	48.96	0	0				0				0	48.96	177.2352
Dowa	Liviness	Madelesi		0		0	15.30	260.1	122.4	0	0				0				0	122.4	443.088
Dowa	Liviness	Mkusa	0.5	625	1250	75	0.00	0	0	0	0	0	0		0				0	75	271.5
Dowa	Lonjasi	M'manja		0		0	5.16	87.72	41.28	0	0				0				0	41.28	149.4336

Dowa	Lontia	Lungu		0		0	0.00	0		0	0.9	90	180	64.8				0			0	64.8	234.576
Dowa	Loveness	Friday		0		0	7.14	121.38		57.12		0		0				0			0	57.12	206.7744
Dowa	Loveness	Maseko		0		0	15.30	260.1		122.4		0		0				0			0	122.4	443.088
Dowa	Loveness	Positani		0		0	5.10	86.7		40.8	0.8	80	160	57.6				0			0	98.4	356.208
Dowa	Loyd	John	0.2	250	500	30	9.36	159.12		74.88	0.5	50	100	36				0			0	140.88	509.9856
Dowa	Lozalia	Chikweza		0		0	8.16	138.72		65.28		0		0				0			0	65.28	236.3136
Dowa	Mabvuto	Kamwanya		0		0	6.12	104.04		48.96	2	200	400	144				0			0	192.96	698.5152
Dowa	Mabvuto	Sweet	0.26	325	672	39	0.00	0		0		0		0				0			0	39	141.18
Dowa	Makezi	Dzikande		0		0	7.14	121.38		57.12		0		0				0			0	57.12	206.7744
Dowa	Mano	Club	1	1250	2500	150	0.00	0		0		0		0				0			0	150	543
Dowa	Martha	Braimu		0		0	6.12	104.04		48.96		0		0				0			0	48.96	177.2352
Dowa	Mary	Bornwell	0.2	250	500	30	0.00	0		0		0		0				0			0	30	108.6
Dowa	Mary	Chipala	0.5	625	1250	75	0.00	0		0		0		0				0			0	75	271.5
Dowa	Master	Benat	2	2500	5000	300	20.40	346.8	0	163.2		0		0				0			0	463.2	1676.784
Dowa	Matias	Sendani		0		0	13.26	225.42		106.08		0		0				0			0	106.08	384.0096
Dowa	Maupo	Bitiel		0		0	13.26	225.42		106.08		0		0				0			0	106.08	384.0096
Dowa	Maxwell	Dete		0		0	12.24	208.08		97.92		0		0				0			0	97.92	354.4704
Dowa	Medson	Mdyankha	1	1250	2500	150	0.00	0		0		0		0				0			0	150	543
Dowa	Medson	Salonga		0		0	9.18	156.06		73.44		0		0				0			0	73.44	265.8528
Dowa	Medson	Scort	0.1	125	250	15	6.12	104.04		48.96		0		0				0			0	63.96	231.5352
Dowa	Million	Daison		0		0	19.38	329.46		155.04		0		0				0			0	155.04	561.2448
Dowa	Million	Tsamba		0		0	9.18	156.06		73.44	1.5	150	300	108				0			0	181.44	656.8128
Dowa	Mkokamwendu	club	1	1250	2500	150	0.00	0		0		0		0				0			0	150	543
Dowa	Moses	Doctor	1	1250	2500	150	7.14	121.38		57.12	1.5	150	300	108				0			0	315.12	1140.7344
Dowa	Moses	Dzanjalimodzi	1	1250	2500	150	7.14	121.38		57.12	1.5	150	300	108				0			0	315.12	1140.7344
Dowa	Moses	Esau		0		0	5.10	86.7		40.8		0		0				0			0	40.8	147.696
Dowa	Moses	Mwale	0.5	625	1250	75	12.24	208.08		97.92	4	400	800	288				0			0	460.92	1668.5304
Dowa	Moses	Thomo		0		0	20.34	345.78		162.72		0		0				0			0	162.72	589.0464
Dowa	Mphangula	Sanjeni		0		0	6.00	102		48	1	100	200	72				0			0	120	434.4
Dowa	Mtambouyenda	club	1.5	1875	3750	225	0.00	0		0		0		0				0			0	225	814.5
Dowa	Nekha	Chiponje		0		0	6.12	104.04		48.96	1	100	200	72				0			0	120.96	437.8752
Dowa	Nelson	Majuweta	0.8	1000	2000	120	15.30	260.1		122.4	1.01	101	203	72.72				0			0	315.12	1140.7344

Dowa	Neston	Chidandale		0		0	5.10	86.7		40.8		0		0				0	40.8	147.696
Dowa	Notice	Fureza		0		0	4.08	69.36		32.64		0		0				0	32.64	118.1568
Dowa	Nowa	Chepetsani		0		0	7.14	121.38		57.12		0		0				0	57.12	206.7744
Dowa	Osward	Kadam'manja	1	1250	2500	150	0.00	0		0		0		0				0	150	543
Dowa	Paul	Chilembwe	0.2	250	500	30	0.00	0		0		0		0				0	30	108.6
Dowa	Petrol	Khinda		0		0	13.26	225.42		106.08		0		0				0	106.08	384.0096
Dowa	Pickson	Zokwe	0.4	500	1000	60	0.00	0		0		0		0				0	60	217.2
Dowa	Pitasoni	Jaziel		0		0	5.10	86.7		40.8		0		0				0	40.8	147.696
Dowa	Postani	Banda		0		0	6.12	104.04	0	48.96	0.8	80	160	57.6				0	106.56	385.7472
Dowa	Rodrick	Chatsalira		0		0	15.30	260.1		122.4		0		0				0	122.4	443.088
Dowa	Sabina	Mtoso		0		0	6.12	104.04		48.96		0		0				0	48.96	177.2352
Dowa	Sadalake	Kaponya		0		0	5.10	86.7		40.8		0		0				0	40.8	147.696
Dowa	Saizi	Lifande		0		0	9.18	156.06		73.44		0		0				0	73.44	265.8528
Dowa	Samison	Chinjoka	0.1	125	250	15	0.00	0		0	0.8	80	160	57.6				0	72.6	262.812
Dowa	Samison	Kaziotche		0		0	9.18	156.06		73.44		0		0				0	73.44	265.8528
Dowa	Samison	Nkhoma	0.4	500	1000	60	0.00	0		0		0		0				0	60	217.2
Dowa	Samson	Loti		0		0	27.54	468.18		220.32		0		0				0	220.32	797.5584
Dowa	Samuel	Chilenga	0.8	1000	2000	120	0.00	0		0		0		0				0	120	434.4
Dowa	Saulosi	Manganjira	1.1	1375	2750	165	0.00	0		0		0		0				0	165	597.3
Dowa	Sekanakoni	Sikaliyoti	4	5000	10000	600	22.44	381.48		179.52		0		0				0	779.52	2821.8624
Dowa	Simbani	Madyela		0		0	6.12	104.04		48.96		0		0				0	48.96	177.2352
Dowa	Simion	Dete		0		0	11.22	190.74		89.76		0		0				0	89.76	324.9312
Dowa	Simkanako	Beneti		0		0	0.00	0	0	0	2.6	260	520	187.2				0	187.2	677.664
Dowa	Sinoliyamu	Banda		0		0	26.52	450.84	0	212.16	3.5	350	700	252				0	464.16	1680.2592
Dowa	Smitent	Chigoba	1	1250	2500	150	0.00	0		0		0		0				0	150	543
Dowa	Solomi	Senzani		0		0	6.12	104.04		48.96		0		0				0	48.96	177.2352
Dowa	Solomoni	Saloni		0		0	8.16	138.72		65.28	2	200	400	144				0	209.28	757.5936
Dowa	Steven	Bilimankhwe	0.9	1125	2250	135	0.00	0	0	0		0		0				0	135	488.7
Dowa	Stonard	Lungu		0		0	6.12	104.04		48.96		0		0				0	48.96	177.2352
Dowa	Thengo	Bwanali		0		0	23.46	398.82		187.68		0		0				0	187.68	679.4016
Dowa	Tifike	Jolijo		0		0	11.22	190.74		89.76		0		0				0	89.76	324.9312
Dowa	Tsogolani	Mpinda		0		0	7.14	121.38		57.12	2	200	400	144				0	201.12	728.0544

Dowa	Tsogolani	Sikenala		0		0	16.32	277.44		130.56		0		0				0	130.56	472.6272
Dowa	Uridi	Makola	0.53	662.5	1325	79.5	0.00	0		0		0		0				0	79.5	287.79
Dowa	Vekelani	Nthala		0		0	18.36	312.12		146.88		0		0				0	146.88	531.7056
Dowa	Voice	Dancer	1	1250	2500	150	0.00	0		0		0		0				0	150	543
Dowa	Widoston	Banda		0		0	8.16	138.72	0	65.28		0		0				0	65.28	236.3136
Dowa	Willard	Tafatatha	0.3	375	750	45	0.00	0		0		0		0				0	45	162.9
Dowa	Willisoni	Bornface	0.6	750	1500	90	0.00	0		0		0		0				0	90	325.8
Dowa	Wise	Mzigwa		0		0	5.16	87.72		41.28		0		0				0	41.28	149.4336
Dowa	Yelemia	Chinkango	0.5	625	1250	75	0.00	0		0		0		0				0	75	271.5
Dowa	Yona	Kamkwamba		0		0	8.16	138.72		65.28		0		0				0	65.28	236.3136
Dowa	Adam	Kamwendo		0		0	7.14	121.38	238	57.12		0		0				0	57.12	206.7744
Dowa	Aida	Josiya		0		0	6	1020	200	48		0		0				0	48	173.76
Dowa	Alifosina	Chikaiko		0		0	14.61	248.37	487	116.88		0		0				0	116.88	423.1056
Dowa	Alinafe	Jiston		0		0	14.88	252.96	496	119.04		0		0				0	119.04	430.9248
Dowa	Anne	Kachiwale		0		0	21.42	364.14	714	171.36		0		0				0	171.36	620.3232
Dowa	Benedictor	Pelekamoyo		0		0	5.58	94.86	186	44.64		0		0				0	44.64	161.5968
Dowa	Bether	Jackson		0		0	4.5	76.5	150	36	0.3	30	60	21.6				0	57.6	208.512
Dowa	Blackson	Makina		0		0	17.49	297.33	583	139.92		0		0				0	139.92	506.5104
Dowa	Blessings	Banda		0		0	7.5	127.5	250	60		0		0				0	60	217.2
Dowa	Chapezeka	Chikupila	0.4	500	1000	60	0	0		0		0		0				0	60	217.2
Dowa	Charles	Mphanda		0		0	5.22	88.74	174	41.76	1.13	113	226	81.36				0	123.12	445.6944
Dowa	Charles	Ackimu		0		0	6.12	104.04	204	48.96		0		0				0	48.96	177.2352
Dowa	Charles Yelesani	Banda	0.2	250	500	30	0	0		0		0		0				0	30	108.6
Dowa	Chidandale	Thang'anyika	0.5	625	1250	75	0	0		0		0		0				0	75	271.5
Dowa	Chikhobwe	Mgwedeza		0		0	9	153	301	72		0		0				0	72	260.64
Dowa	Chikumbutso	Kachigong'o	0.2	250	500	30	0	0		0		0		0				0	30	108.6
Dowa	Chisomo	Andaman		0		0	9	153	300	72		0		0				0	72	260.64
Dowa	Christopher	Machangula		0		0	11.1	188.7	370	88.8	0.9	90	185	64.8				0	153.6	556.032
Dowa	Christopher	Mgwedeza		0		0	5.63	95.71	184	45.04		0		0				0	45.04	163.0448
Dowa	Chuzu	Club	0.41	512.5	1031	61.5	0	0		0		0		0				0	61.5	222.63
Dowa	Clement	Chigwedeza		0		0	6	1020	200	48		0		0				0	48	173.76
Dowa	Daniel	Mdzumila		0		0	6.48	110.16	216	51.84	1	100	200	72				0	123.84	448.3008

Dowa	David	Kavumbula		0		0	8.22	139.74	27.4	65.76		0		0				0	65.76	238.0512
Dowa	Denis	Kamchele	0.4	500	1000	60	6	102	20.0	48	2	20.0	40.0	144				0	252	912.24
Dowa	Dzifuse	Kasambatula		0		0	132.6	2254.2	44.2	1060.8		0		0				0	1060.8	3840.096
Dowa	Edward	Chabwela		0		0	5.1	86.7	17.0	40.8		0		0				0	40.8	147.696
Dowa	Efrida	Macdonard		0		0	13.5	229.5	45.0	108		0		0				0	108	390.96
Dowa	Efrida	Chakuuma		0		0	7.5	127.5	25.0	60		0		0				0	60	217.2
Dowa	Elemia	James	0.5	625	1250	75	8.01	136.17	26.7	64.08		0		0				0	139.08	503.4696
Dowa	Elias	Ndolo		0		0	18.42	313.14	61.4	147.36		0		0				0	147.36	533.4432
Dowa	Elizabeth	Chakuuma		0		0	6	102	20.0	48		0		0				0	48	173.76
Dowa	Elube	Kaputa		0		0	18.72	318.24	62.4	149.76		0		0				0	149.76	542.1312
Dowa	Emmanuel	Chimphiri	1.5	187.5	3750	225	0	0		0		0		0				0	225	814.5
Dowa	Emmanuel	Joseph		0		0	4.5	76.5	15.0	36		0		0				0	36	130.32
Dowa	Fandison	Betiuala		0		0	10.5	178.5	35.0	84	0.7	70	14.0	50.4				0	134.4	486.528
Dowa	Fasani	Bitiel		0		0	16.32	277.44	54.4	130.56		0		0				0	130.56	472.6272
Dowa	Felester	Chimoto		0		0	4.03	68.51	14.6	32.24		0		0				0	32.24	116.7088
Dowa	Felex	Zakeyo		0		0	6	102	20.0	48		0		0				0	48	173.76
Dowa	Felex	Chibweza		0		0	8.16	138.72	27.2	65.28		0		0				0	65.28	236.3136
Dowa	Fostala	Piyasi		0		0	15.3	260.1	51.0	122.4		0		0				0	122.4	443.088
Dowa	Fransico	Jiston		0		0	13.5	229.5	45.0	108		0		0				0	108	390.96
Dowa	Fred	Mwale		0		0	12	204	40.0	96		0		0				0	96	347.52
Dowa	Frendison	Daniel		0		0	11.22	190.74	37.4	89.76		0		0				0	89.76	324.9312
Dowa	Gilbert	Daison		0		0	4.2	71.4	14.0	33.6	0.2	20	40	14.4				0	48	173.76
Dowa	Godfrey	Sandikonda		0		0	23.52	399.84	78.4	188.16		0		0				0	188.16	681.1392
Dowa	Goodwell	Tchova		0		0	5.88	99.96	19.6	47.04		0		0				0	47.04	170.2848
Dowa	Goodwell	Siment		0		0	7.5	127.5	25.0	60		0		0				0	60	217.2
Dowa	Gradwell	Chambalo		0		0	9.48	161.16	31.6	75.84		0		0				0	75.84	274.5408
Dowa	Grevazio	Nkhoma		0		0	6	102	20.0	48		0		0				0	48	173.76
Dowa	Halod	Baziliyo		0		0	15.36	261.12	51.2	122.88		0		0				0	122.88	444.8256
Dowa	Henele	Thengeza		0		0	7.56	128.52	25.2	60.48		0		0				0	60.48	218.9376
Dowa	Henery	Apuleni		0		0	9	153	30.0	72		0		0				0	72	260.64
Dowa	Henly	Watch		0		0	11.58	196.86	38.6	92.64		0		0				0	92.64	335.3568
Dowa	Hodges	Chawola		0		0	4.5	76.5	15.0	36		0		0				0	36	130.32

Dowa	Hollys	Mazinga		0		0	15	255	50	120		0		0			0			0	120	434.4
Dowa	Hopson	Keme	0.2	250	500	30	0	0		0		0		0			0			0	30	108.6
Dowa	Ida	Patel		0		0	4.2	71.4	14	33.6		0		0			0			0	33.6	121.632
Dowa	Isaac	Mphanda		0		0	3	51	10	24		0		0			0			0	24	86.88
Dowa	Jabes	Chafukila		0		0	11.25	191.25	37	90		0		0			0			0	90	325.8
Dowa	Jackson	Kamwaza		0		0	18	306	60	144	1	10	20	72			0			0	216	781.92
Dowa	Jacob	Chatanga		0		0	19.38	329.46	64	155.04		0		0			0			0	155.04	561.2448
Dowa	Jamikele	Kalimbika		0		0	10.5	178.5	35	84		0		0			0			0	84	304.08
Dowa	Janey	Witiman	0.4	500	1000	60	0	0		0		0		0			0			0	60	217.2
Dowa	Jemitala	Chikakheni		0		0	22.5	382.5	75	180		0		0			0			0	180	651.6
Dowa	Jiston	Banda		0		0	6.63	112.71	22	53.04		0		0			0			0	53.04	192.0048
Dowa	John	Kefa	0.2	250	500	30	0	0		0		0		0			0			0	30	108.6
Dowa	Josephy	Mpinganjila	0.2	250	500	30	2	34	19	16		0		0			0			0	46	166.52
Dowa	Jossam	Shawa		0		0	13.5	229.5	45	108		0		0			0			0	108	390.96
Dowa	Juliana	Kamunga		0		0	6	102	20	48	0.5	50	10	36			0			0	84	304.08
Dowa	Juliana	Msukwala		0		0	3.93	66.81	13	31.44		0		0			0			0	31.44	113.8128
Dowa	Kadyam'kena	Jaleke		0		0	6.18	105.06	20	49.44		0		0			0			0	49.44	178.9728
Dowa	Kantengo	Nala		0		0	4.26	72.42	14	34.08		0		0			0			0	34.08	123.3696
Dowa	Katambo	Club	0.5	625	1250	75	0	0		0		0		0			0			0	75	271.5
Dowa	Kavamg'omo	Banda		0		0	0	0		0	2.9	29	58	208.8			0			0	208.8	755.856
Dowa	Kondwani	Chikumbutso		0		0	5.1	86.7	17	40.8		0		0			0			0	40.8	147.696
Dowa	Lameck	Chilaka		0		0	7.77	132.09	25	62.16		0		0			0			0	62.16	225.0192
Dowa	Lanwell Josamu	Chisinga		0		0	26.07	443.19	86	208.56		0		0			0			0	208.56	754.9872
Dowa	Layinodi	Simbi		0		0	3	51	10	24	1.03	10	20	74.16			0			0	98.16	355.3392
Dowa	Lemani	Chikuse		0		0	14.34	243.78	47	114.72		0		0			0			0	114.72	415.2864
Dowa	Lemekezani	Suwetala		0		0	7.5	127.5	25	60		0		0			0			0	60	217.2
Dowa	Lenard	Chikando		0		0	6	102	20	48		0		0			0			0	48	173.76
Dowa	Leonard	Mpinganjira		0		0	15	255	50	120		0		0			0			0	120	434.4
Dowa	Levison	Phiri		0		0	5.4	91.8	18	43.2		0		0			0			0	43.2	156.384
Dowa	Levison	Boti	0.2	250	500	30	0	0		0		0		0			0			0	30	108.6
Dowa	Loid	Ching'oma		0		0	12	204	40	96		0		0			0			0	96	347.52
Dowa	Louis	Chagalamuka		0		0	12	204	40	96		0		0			0			0	96	347.52

Dowa	Loveness	Beseni	0.2	250	500	30	0	0	0	0	0	0	0	0	0	0	0	0	0	30	108.6
Dowa	Lucy	Julias		0		0	6.6	112.2	220	52.8	0	0	0	0	0	0	0	0	0	52.8	191.136
Dowa	Luka	Kamtopola		0		0	9	153	300	72	0	0	0	0	0	0	0	0	0	72	260.64
Dowa	Machisawo	Kaigomba		0		0	22.44	381.48	748	179.52	0	0	0	0	0	0	0	0	0	179.52	649.8624
Dowa	Mackdonard	Chabwela		0		0	22.59	384.03	753	180.72	0	0	0	0	0	0	0	0	0	180.72	654.2064
Dowa	Magadalena	Paul		0		0	5.1	86.7	170	40.8	0	0	0	0	0	0	0	0	0	40.8	147.696
Dowa	Makuta	Chitseka		0		0	22.44	381.48	748	179.52	0	0	0	0	0	0	0	0	0	179.52	649.8624
Dowa	Malita	Levisoni		0		0	9	153	300	72	0	0	0	0	0	0	0	0	0	72	260.64
Dowa	Malitina	Chilombo		0		0	4.77	81.09	159	38.16	0	0	0	0	0	0	0	0	0	38.16	138.1392
Dowa	Mandaliza	Potifala		0		0	7.14	121.38	238	57.12	0	0	0	0	0	0	0	0	0	57.12	206.7744
Dowa	Mark	Gawanani	0.49	612.5	1225	73.5	17.34	294.78	578	138.72	0	0	0	0	0	0	0	0	0	212.22	768.2364
Dowa	Mary	Kapalamula		0		0	9	153	300	72	0	0	0	0	0	0	0	0	0	72	260.64
Dowa	Masoambeta	Labson		0		0	6.12	104.04	204	48.96	0	0	0	0	0	0	0	0	0	48.96	177.2352
Dowa	Masulani	Tengeni		0		0	20.4	346.8	646	163.2	0	0	0	0	0	0	0	0	0	163.2	590.784
Dowa	Matambila	Phiri		0		0	14.88	252.96	496	119.04	0	0	0	0	0	0	0	0	0	119.04	430.9248
Dowa	Matias	Mtondela		0		0	11.61	197.37	387	92.88	0	0	0	0	0	0	0	0	0	92.88	336.2256
Dowa	Matias	Mafika		0		0	4.08	69.36	136	32.64	0	0	0	0	0	0	0	0	0	32.64	118.1568
Dowa	Matsita	Phiri		0		0	8.21	139.57	307	65.68	2.06	206	412	148.32	0	0	0	0	0	214	774.68
Dowa	Mekilina	Kadzanja		0		0	10.2	173.4	340	81.6	0.3	30	60	21.6	0	0	0	0	0	103.2	373.584
Dowa	Mercy	Phiri		0		0	10.1	171.7	340	80.8	0	0	0	0	0	0	0	0	0	80.8	292.496
Dowa	Mercy	Brazwell		0		0	15	255	500	120	0	0	0	0	0	0	0	0	0	120	434.4
Dowa	Mofati	Zefelino		0		0	9.18	156.06	306	73.44	0	0	0	0	0	0	0	0	0	73.44	265.8528
Dowa	Molice	Manda		0		0	21.63	367.71	721	173.04	0	0	0	0	0	0	0	0	0	173.04	626.4048
Dowa	Mwatiitha	Kadango		0		0	10.23	173.91	492	81.84	0	0	0	0	0	0	0	0	0	81.84	296.2608
Dowa	Nekha	Sadya		0		0	11.22	190.74	374	89.76	1.5	150	300	108	0	0	0	0	0	197.76	715.8912
Dowa	Nelson	Chatanga		0		0	21.45	364.65	715	171.6	0	0	0	0	0	0	0	0	0	171.6	621.192
Dowa	Nyamulani	Jekitala	0.4	500	1000	60	0	0	0	0	0	0	0	0	0	0	0	0	0	60	217.2
Dowa	Osten	Jede		0		0	8.1	137.7	270	64.8	0	0	0	0	0	0	0	0	0	64.8	234.576
Dowa	Pasikale	Manyenje		0		0	12	204	400	96	0.6	60	120	43.2	0	0	0	0	0	139.2	503.904
Dowa	Petro	Maupo	0.44	550	1104	66	0	0	0	0	0	0	0	0	0	0	0	0	0	66	238.92
Dowa	Petro	Bwanali		0		0	18.48	314.16	616	147.84	0	0	0	0	0	0	0	0	0	147.84	535.1808
Dowa	Pondelani	Bayineta		0		0	9.3	158.1	310	74.4	0	0	0	0	0	0	0	0	0	74.4	269.328

Dowa	Precious	Kachigong'o		0		0	19.32	328.44	64.4	154.56		0		0				0	154.56	559.5072
Dowa	Richard	Doctor		0		0	15	255	50.0	120		0		0				0	120	434.4
Dowa	Robert	Chisamba		0		0	15	255	50.0	120		0		0				0	120	434.4
Dowa	Robert	Kamchiliko		0		0	6	102	20.0	48		0		0				0	48	173.76
Dowa	Rosemary	Kamndaya		0		0	15	255	50.0	120		0		0				0	120	434.4
Dowa	Rubeni	Saloni		0		0	6.3	107.1	21.0	50.4	1	10.0	20.0	72				0	122.4	443.088
Dowa	Sadalaki	Sungaunyolo	0.4	500	1000	60	0	0		0		0		0				0	60	217.2
Dowa	Sadrack	Shawa		0		0	8.07	137.19	26.9	64.56		0		0				0	64.56	233.7072
Dowa	Sainan	Jaleke		0		0	5.1	86.7	17.0	40.8		0		0				0	40.8	147.696
Dowa	Scariot	Andrew	0.2	250	500	30	3	51	10.0	24	1.02	10.2	20.4	73.44				0	127.44	461.3328
Dowa	Seba	Chizonda		0		0	6.12	104.04	20.4	48.96	1	10.0	20.0	72				0	120.96	437.8752
Dowa	Shadreck	Banda		0		0	7.77	132.09	25.9	62.16		0		0				0	62.16	225.0192
Dowa	Soft	Kuphele	0.2	250	500	30	9.18	156.06	30.6	73.44		0		0				0	103.44	374.4528
Dowa	Solomon	Katonda		0		0	6	102	20.0	48		0		0				0	48	173.76
Dowa	Sunganani	Esawi		0		0	4.5	76.5	15.0	36		0		0				0	36	130.32
Dowa	Tchesaman	Njewa		0		0	8.31	141.27	27.7	66.48		0		0				0	66.48	240.6576
Dowa	Teleza	Magombo		0		0	5.4	91.8	18.0	43.2	0.35	35	70	25.2				0	68.4	247.608
Dowa	Tiyamike	Kaponya		0		0	9	153	30.0	72		0		0				0	72	260.64
Dowa	Tomas	Kalikwembe		0		0	9	153	30.0	72		0		0				0	72	260.64
Dowa	Tumale	Gasipa		0		0	22.29	378.93	74.3	178.32		0		0				0	178.32	645.5184
Dowa	Velonica	Happy	0.22	275	550	33	0	0		0		0		0				0	33	119.46
Dowa	Victoria	Dailo		0		0	4.2	71.4	14.0	33.6	0.35	35	70	25.2				0	58.8	212.856
Dowa	Violet	Mthuzi		0		0	9	153	30.0	72		0		0				0	72	260.64
Dowa	Wayson	Bwanausi		0		0	6.3	107.1	21.0	50.4	0.75	75	15.0	54				0	104.4	377.928
Dowa	Widson	Sakhulan		0		0	9	153	30.0	72		0		0				0	72	260.64
Dowa	Wyson	Ndalama		0		0	15	255	50.0	120		0		0				0	120	434.4
Dowa	Yondo	Sajeni		0		0	7.5	127.5	25.0	60		0		0				0	60	217.2
Dowa	Yosefe	Saizi		0		0	6	102	20.0	48		0		0				0	48	173.76
Dowa	Yotamu	Kuyenda		0		0	8.4	142.8	28.0	67.2	0.7	70	14.0	50.4				0	117.6	425.712
Dowa	Zekeliya	Khandoni		0		0	11.22	190.74	37.4	89.76		0		0				0	89.76	324.9312
Dowa	Ziwake	Mgwedeza		0		0	9.06	154.02	30.2	72.48		0		0				0	72.48	262.3776
Dowa	Mzingwa Club		6	750	1500	900	0	0		0	0	0		0				0	900	3258

Dowa	Gift	Kadagwa	0.17	208.5	417	25.02	0	0	0	0	0	0	0	0	0	0	0	0	0	0	25.02	90.5724
Dowa	Moffati	Kaipa	0.16	200	400	24	0	0	0	0	0	0	0	0	0	0	0	0	0	0	24	86.88
Dowa	Kambeketa	Kefasi	0.17	208	416	24.96	0	0	0	0	0	0	0	0	0	0	0	0	0	0	24.96	90.3552
Dowa	Emilida	Malenga	0	0	0	0	5.97	101.49	199	47.76	0	0	0	0	0	0	0	0	0	0	47.76	172.8912
Dowa	Kefasi	Mwale	0	0	0	0	4.08	69.36	136	32.64	0	0	0	0	0	0	0	0	0	0	32.64	118.1568
Dowa	Velentina	Kosolo	0	0	0	0	4.08	69.36	136	32.64	0	0	0	0	0	0	0	0	0	0	32.64	118.1568
Dowa	Majamanda	Banda	0	0	0	0	3.06	52.02	102	24.48	0	0	0	0	0	0	0	0	0	0	24.48	88.6176
Dowa	Marko	Chinkango	0	0	0	0	4.02	68.34	134	32.16	0	0	0	0	0	0	0	0	0	0	32.16	116.4192
Dowa	Jalivesi	Manyusa	0.16	201.5	403	24.18	0	0	0	0	0	0	0	0	0	0	0	0	0	0	24.18	87.5316
Dowa	Heleson	Josephy	0	0	0	0	7.5	127.5	250	60	0	0	0	0	0	0	0	0	0	0	60	217.2
Dowa	Msutumali Gribat	Msutumali Gribat	0	0	0	0	6.12	104.04	204	48.96	0	0	0	0	0	0	0	0	0	0	48.96	177.2352
Dowa	Evanche Chiponda	Evanche Chiponda	0	0	0	0	12	204	400	96	0	0	0	0	0	0	0	0	0	0	96	347.52
Dowa	Jamisoni Lipenga	Jamisoni Lipenga	0	0	0	0	12	204	400	96	0	0	0	0	0	0	0	0	0	0	96	347.52
Dowa	Malita Phiri	Malita Phiri	0	0	0	0	9	153	300	72	0.5	50	100	36	0	0	0	0	0	0	108	390.96
Dowa	Yona Mwale	Yona Mwale	0	0	0	0	6.12	104.04	204	48.96	0	0	0	0	0	0	0	0	0	0	48.96	177.2352
Dowa	Elvis Chikhawo	Elvis Chikhawo	0.4	500	1000	60	0	0	0	0	0	0	0	0	0	0	0	0	0	0	60	217.2
Dowa	Yamison Medson	Yamison Medson	0	0	0	0	9	153	300	72	0	0	0	0	0	0	0	0	0	0	72	260.64
Dowa	Madzo	Club	0.4	500	1000	60	0	0	0	0	0	0	0	0	0	0	0	0	0	0	60	217.2
Dowa	Chikumbutso	Kachingong'o	0	0	0	0	15	255	500	120	0	0	0	0	0	0	0	0	0	0	120	434.4
Dowa	Kalament	Kafalilan	0	0	0	0	15.3	260.1	510	122.4	0	0	0	0	0	0	0	0	0	0	122.4	443.088
Dowa	Dalitso	Alick	0	0	0	0	13.26	225.42	442	106.08	0	0	0	0	0	0	0	0	0	0	106.08	384.0096
Dowa	Gafwali	Amon	0.68	848	1696	101.76	0	0	0	0	0	0	0	0	0	0	0	0	0	0	101.76	368.3712
Dowa	Petrol	Chikoya	0	0	0	0	12.51	212.67	417	100.08	0	0	0	0	0	0	0	0	0	0	100.08	362.2896
Dowa	Nekhantani	Chikuse	0	0	0	0	10.2	173.4	340	81.6	0	0	0	0	0	0	0	0	0	0	81.6	295.392
Dowa	Kondwani	Chilindeni	0	0	0	0	20.46	347.82	682	163.68	0	0	0	0	0	0	0	0	0	0	163.68	592.5216
Dowa	Alfred	Chungu	0	0	0	0	15.57	264.69	519	124.56	0	0	0	0	0	0	0	0	0	0	124.56	450.9072
Dowa	Chifunilo	Sendela	0	0	0	0	17.88	303.96	596	143.04	0	0	0	0	0	0	0	0	0	0	143.04	517.8048
Dowa	Gilson	Layson	0	0	0	0	16.41	278.97	547	131.28	0	0	0	0	0	0	0	0	0	0	131.28	475.2336
Dowa	Esnat	Nyambo	0	0	0	0	0	0	0	0	1.91	191	381	137.16	0	0	0	0	0	0	137.16	496.5192
Dowa	Jenifa	Stivin	0	0	0	0	0	0	0	0	1.95	195	389	140.04	0	0	0	0	0	0	140.04	506.9448
Dowa	Mazuzo	Matindi	0	0	0	0	13.77	234.09	459	110.16	0	0	0	0	0	0	0	0	0	0	110.16	398.7792
Dowa	Moliyat	Kapandasalu	0	0	0	0	15.66	266.22	522	125.28	0	0	0	0	0	0	0	0	0	0	125.28	453.5136

Dowa	Naliwota	Mtsekwe	0	0	0	16.38	278.46	54.6	131.04	0	0	0	0	0	0	0	0	0	0	131.04	474.3648
Dowa	Gift	Kachigwada	0	0	0	13.38	227.46	44.6	107.04	0	0	0	0	0	0	0	0	0	0	107.04	387.4848
Dowa	Gilibat	Kaliyekha	0	0	0	13.32	226.44	44.4	106.56	0	0	0	0	0	0	0	0	0	0	106.56	385.7472
Dowa	Jojina	Master	0	0	0	0	0	0	0	2.11	21.1	42.1	151.56	0	0	0	0	0	0	151.56	548.6472
Dowa	Stediya	Kazombo	0	0	0	0	0	0	0	1.94	19.4	38.8	139.68	0	0	0	0	0	0	139.68	505.6416
Dowa	Kadaya	Jaziel	0	0	0	17.58	298.86	58.6	140.64	1.59	15.9	31.8	114.48	0	0	0	0	0	0	255.12	923.5344
Dowa	Nasiyani	Mail	0	0	0	12.84	218.28	42.8	102.72	0	0	0	0	0	0	0	0	0	0	102.72	371.8464
Dowa	Loveness	Kadaya	0	0	0	13.47	228.99	44.9	107.76	0	0	0	0	0	0	0	0	0	0	107.76	390.0912
Dowa	Boston	Samalan	0	0	0	19.95	339.15	66.5	159.6	0	0	0	0	0	0	0	0	0	0	159.6	577.752
Dowa	Samalani	Kalioni	0	0	0	19.14	325.38	63.8	153.12	0	0	0	0	0	0	0	0	0	0	153.12	554.2944
Dowa	Neston	Mwasala	0	0	0	15.66	266.22	52.2	125.28	0	0	0	0	0	0	0	0	0	0	125.28	453.5136
Dowa	Mwasala	Tsamba	0	0	0	18.15	308.55	60.5	145.2	0	0	0	0	0	0	0	0	0	0	145.2	525.624
Dowa	Obuley	Tamitawo	0	0	0	0	0	0	0	2	20.0	40.0	144	0	0	0	0	0	0	144	521.28
Dowa	Hadwell	Bowa	0	0	0	18.84	320.28	62.8	150.72	0	0	0	0	0	0	0	0	0	0	150.72	545.6064
Dowa	Nasikweya	Mbakuwa	0	0	0	16.29	276.93	54.3	130.32	0	0	0	0	0	0	0	0	0	0	130.32	471.7584
Dowa	Fainess	Chimpondo	0	0	0	20.01	340.17	66.7	160.08	0	0	0	0	0	0	0	0	0	0	160.08	579.4896
Dowa	Faless	Kabwela	0	0	0	17.97	305.49	59.9	143.76	0	0	0	0	0	0	0	0	0	0	143.76	520.4112
Dowa	Bonifesi	Phiri	0	0	0	13.44	228.48	44.8	107.52	0	0	0	0	0	0	0	0	0	0	107.52	389.2224
Dowa	Gladwel	Phiri	0	0	0	0	0	0	0	1.41	14.1	28.1	101.16	0	0	0	0	0	0	101.16	366.1992
Dowa	Mafiyo	Phezi	0	0	0	16.32	277.44	54.4	130.56	0	0	0	0	0	0	0	0	0	0	130.56	472.6272
Dowa	Makison	Kandilika	0	0	0	15.96	271.32	53.2	127.68	0	0	0	0	0	0	0	0	0	0	127.68	462.2016
Dowa	Bulayimu	Kalonga	0	0	0	0	0	0	0	2.93	29.3	58.6	210.96	0	0	0	0	0	0	210.96	763.6752
Dowa	Jefule	Fulakison	0	0	0	13.32	226.44	44.4	106.56	0	0	0	0	0	0	0	0	0	0	106.56	385.7472
																				46824.83	169505.8846