

M621 Motorway Junctions 1 to 7 Improvements

Confirmed Order

**The Highways England (M621 Motorway Junctions 1 to 7
Improvements) (Side Roads) Order 2019**

(as modified by the Secretary of State for Transport)

Contents of the Confirmed Order booklet

THE HIGHWAYS ENGLAND (M621 MOTORWAY JUNCTIONS 1 TO 7 IMPROVEMENTS) (SIDE ROADS) ORDER 2019

Order

Schedule

(as modified)

Confirmation Statement

The Plan Folio

Folio Cover

Key Plan

Site Plan 1A

Site Plan 1B

Site Plan 2

The Secretary of State for Transport confirmed this Order with modifications, as shown in red ink alterations, on 27 November 2020.

HIGHWAYS ACT 1980

THE HIGHWAYS ENGLAND (M621 MOTORWAY JUNCTIONS 1 TO 7 IMPROVEMENTS) (SIDE ROADS) ORDER 2019

Highways England make this Order in exercise of its powers under Sections 18 and 125 of the Highways Act 1980 –

1. Highways England are authorised in relation to the Motorway at M621 Junction 2A in the Parish of Beeston & Holbeck and Junction 7 in the Parish of Hunslet & Riverside, both in the City of Leeds to:
 - (a) improve the lengths of highway named in the Schedule and shown on the Site Plan by cross hatching;
 - (b) stop up each length of highway described in the Schedule and shown on the Site Plan by zebra hatching;
 - (c) stop up each private means of access to premises described in the said Schedule and shown on the Site Plan by a solid black band; and
 - (d) provide new means of access to premises along each route or at each location shown on the Site Plan by thin diagonal hatching.
2. Where a new highway is to be constructed or a new access is to be provided in connection with the stopping up of a length of highway or private means of access described in the said Schedule, its reference letter or number (as the case may be) is placed in the said Schedule opposite the description of that length.
3. The Site Plan shows the works indicated in the Schedule and the route of the motorway in relation to those works.
4. Where immediately before a length of highway is stopped up in pursuance of this Order there is under, in, on, over, along or across that highway any apparatus of statutory undertakers or any telecommunications code system operator then, subject to Section 21 of the Highways Act 1980, those undertakers, or that operator, as the case may be, shall have the same rights as respects that apparatus as they had immediately before the stopping up took place.

5. In this Order –

(a) Distances are measured along the route of the relevant highway or private means of access to premises, as the case may be;

(b) "Highways England" means Highways England Company Limited, which is a strategic highways company (Company No. 9346363), which is a company registered in England and Wales and whose Registered Office is Bridge House, Walnut Tree Close, Guildford, Surrey, GU1 4LZ;

"the motorway" means the M621 Motorway which Highways England propose to improve from its junction with the M62 Motorway Junction 27 to approximately 1.1Km south of the centre of the M621 Motorway Junction 7 roundabout;

"new access" means a means of access to premises authorised by this Order to be provided;

"improvement" In relation to a highway includes raising, lowering or otherwise altering that highway, and "improved" shall be construed accordingly;

"the Site Plan" means the plan folio cover numbered HE/18/MP/002, a Key Plan and three Site Plans numbered 1A, 1B and 2 marked "The Highways England (M621 Motorway Junctions 1 to 7 Improvements) (Side Roads) Order 2019" signed on behalf of, and carrying the common seal of, Highways England and deposited at the offices of Highways England, Lateral, 8 City Walk, Leeds LS11 9AT; a duplicate copy has been deposited at the offices of the Secretary of State for Transport.

THE SCHEDULE

Locality 1 – M621 Junction 2A, situated in the Parish of Beeston & Holbeck,
in the City of Leeds.

Site Plan – 1A and 1B

Highways to be improved

Cemetery Road with its junction with the M621 Junction 2A westbound off slip road.
(See Site Plan 1B)

Highways to be stopped up

Reference letters of new highways

A length of M621 Junction 2A westbound off-slip road,
from a point 20 metres east of its junction with
Cemetery Road, generally north ~~westwards~~ ^{eastwards} for distance
of 163 metres. (See Site Plan 1A)

-

Private means of access to be stopped up

Reference number of new access

--

1

(See Site Plan 1B)

Locality 2 – M621 Junction 7, situated in the Parish of Hunslet & Riverside,
in the City of Leeds.

Site Plan – 2

Highways to be improved

A61 (Wakefield Road)

Private means of access to be stopped up

Reference number of new access

Access to pasture land from the western boundary of
the A61 (Wakefield Road), at a point 30 metres south of ^{east}
the M621 Junction 7 eastbound on-slip diverge from the
A61 (Wakefield Road), southward for a distance of 69
metres. (marked 'a' on Site Plan 2)

2

Signed on behalf of
Highways England Company Limited



Name: SANDIE FORTE-GILL
Divisional Director
Highways England Company Limited



Date: 3 October 2019

No. 1426 / 2019

THE HIGHWAYS ENGLAND (M621 MOTORWAY JUNCTIONS 1 TO 7 IMPROVEMENTS) (SIDE ROADS) ORDER 2019

The Secretary of State for Transport hereby confirms the foregoing Order with modifications shown by red ink alterations. The Secretary of State is satisfied -

- (a) as respects each highway the stopping up of which is authorised by the Order, that another reasonably convenient route is available or will be provided before that highway is stopped up, and
- (b) as respects each private means of access the stopping up of which is authorised by the Order, that other reasonably convenient means of access to the relevant premises are available or will be provided in pursuance of the Order before that private means of access is stopped up or that no access to the relevant premises is reasonably required.

This document has been signed by way of an electronic signature on 27th November at 09:00 at my home premises.

Signed by authority
of the Secretary of State
27th November 2020

A stylized, handwritten signature in black ink, consisting of a large, loopy 'S' followed by a horizontal line and a final flourish.

SIMON CONNICK
A Senior Civil Servant in the
Department for Transport

Folio Cover referred to in
THE HIGHWAYS ENGLAND
(M621 MOTORWAY JUNCTIONS 1 TO 7 IMPROVEMENTS)
(SIDE ROADS) ORDER 2019

THESE SITE PLANS SHOW THE SITES OF
IMPROVEMENTS, STOPPING UP AND NEW ACCESSSES
BUT NOT THE WIDTHS OR CONSTRUCTIONAL DETAILS.

KEY:

HIGHWAYS TO BE STOPPED UP



PRIVATE MEANS OF ACCESS TO BE STOPPED UP



ROUTES OF NEW PRIVATE MEANS OF ACCESS



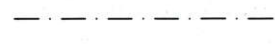
HIGHWAYS TO BE IMPROVED



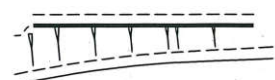
LOCAL AUTHORITY BOUNDARY



PUBLIC RIGHT OF WAY



PROPOSED SCHEME ALIGNMENT



Key Plan Scale 1:25,000
Site Plan Scale 1:1,250 and 1:2,500

HE PLAN FOLIO NO.

HE / 18 / MP / 002

28th August 2019

SIGNED BY AUTHORITY OF
HIGHWAYS ENGLAND COMPANY LIMITED

NAME: SANDIE FORTE-GILL

A DIVISIONAL DIRECTOR IN
HIGHWAYS ENGLAND COMPANY LIMITED

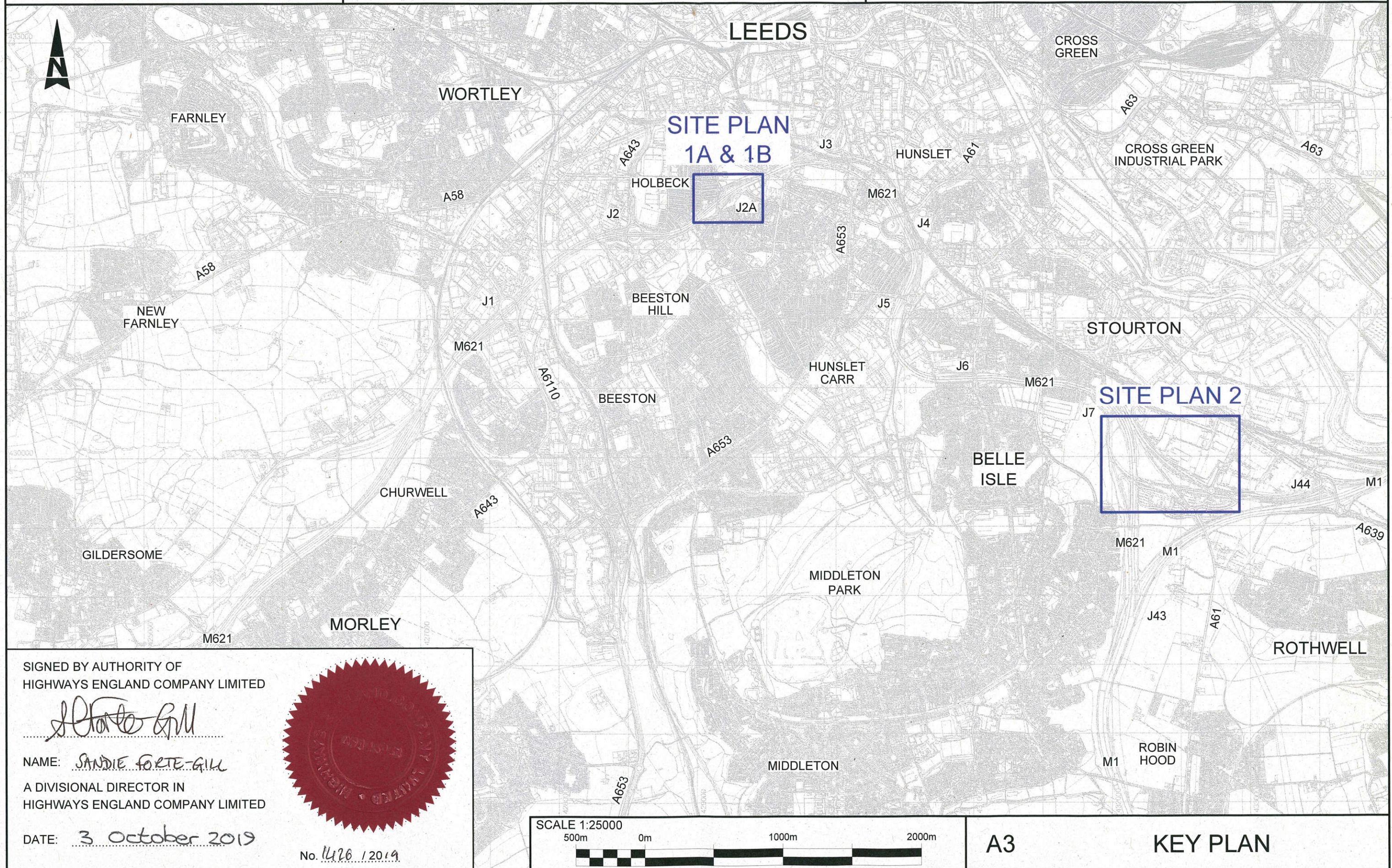
DATE: 3 October 2019



No. 1426 / 2019

THIS MAP IS BASED ON ORDNANCE SURVEY MATERIAL WITH THE PERMISSION OF ORDNANCE SURVEY ON BEHALF OF THE CONTROLLER OF HER MAJESTY'S STATIONERY OFFICE. © CROWN COPYRIGHT. UNAUTHORISED REPRODUCTION INFRINGES CROWN COPYRIGHT AND MAY LEAD TO PROSECUTION OR CIVIL PROCEEDINGS. HIGHWAYS ENGLAND 100030649, 2019.

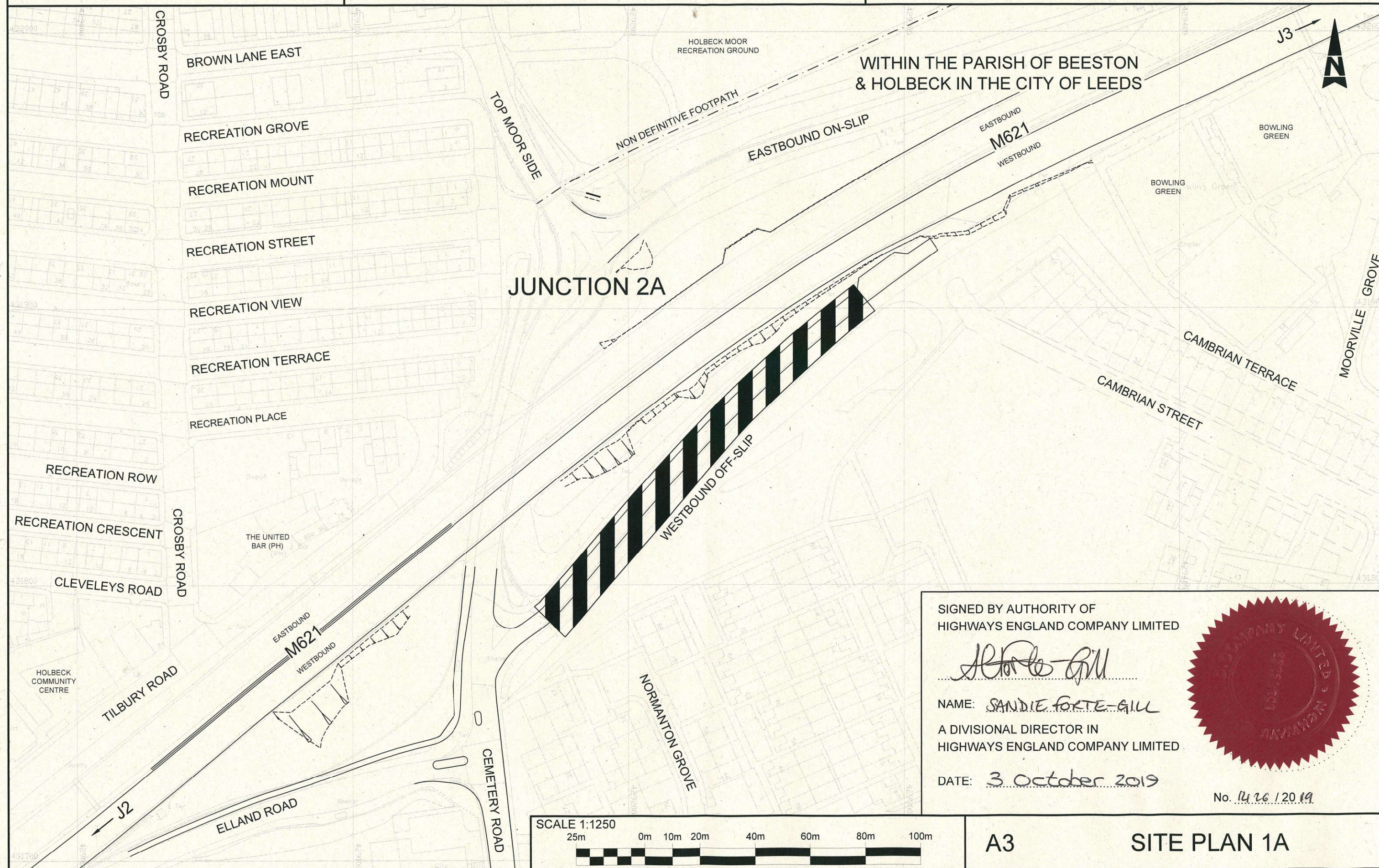
Site Plan referred to in
THE HIGHWAYS ENGLAND
(M621 MOTORWAY JUNCTIONS 1 TO 7 IMPROVEMENTS)
(SIDE ROADS) ORDER 2019



THIS MAP IS BASED ON ORDNANCE SURVEY MATERIAL WITH THE PERMISSION OF ORDNANCE SURVEY ON BEHALF OF THE CONTROLLER OF HER MAJESTY'S STATIONERY OFFICE. © CROWN COPYRIGHT. UNAUTHORISED REPRODUCTION INFRINGES CROWN COPYRIGHT AND MAY LEAD TO PROSECUTION OR CIVIL PROCEEDINGS. HIGHWAYS ENGLAND 100030649, 2019.

M621 JUNCTION 2A STOPPING UP

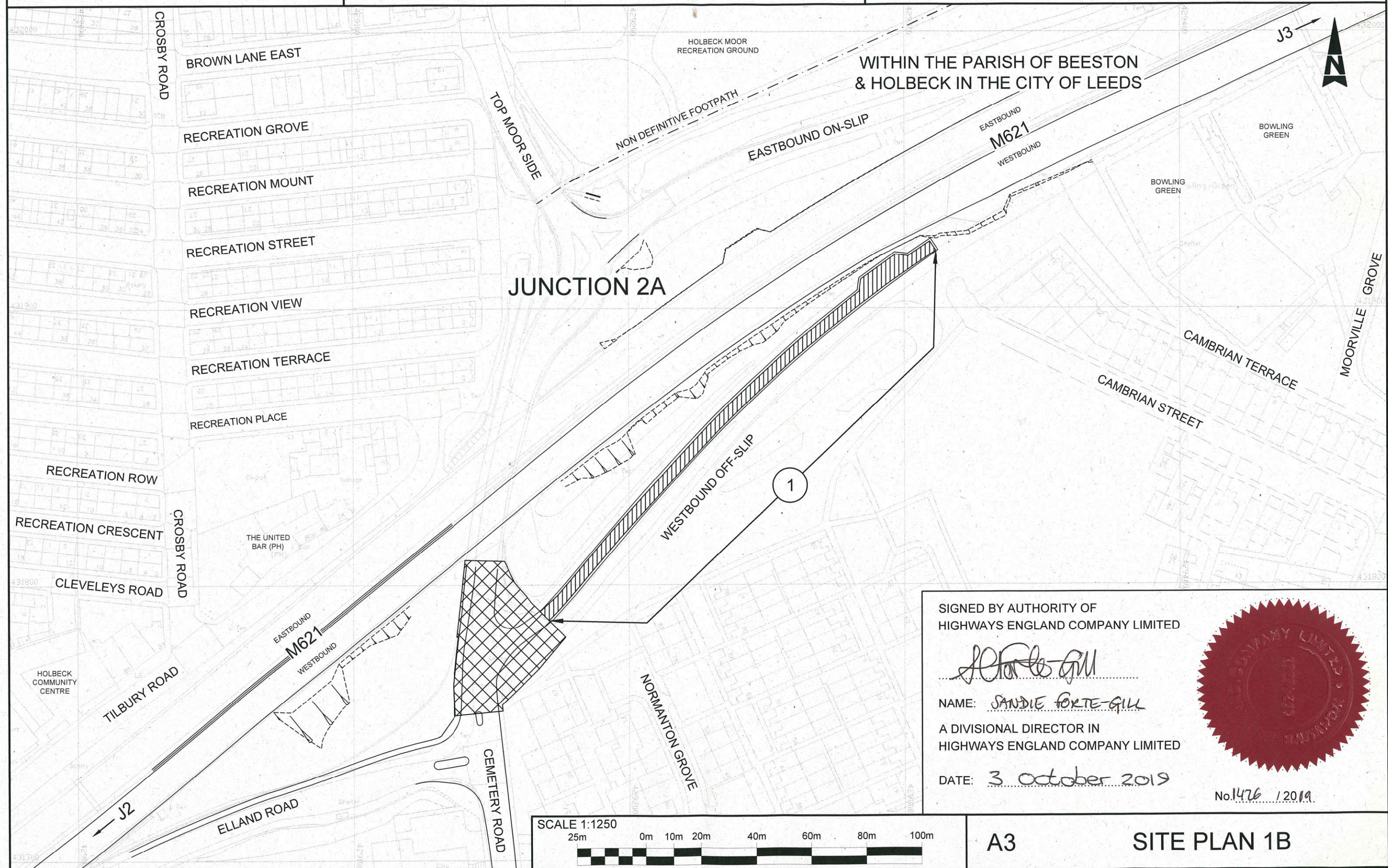
Site Plan referred to in
THE HIGHWAYS ENGLAND
(M621 MOTORWAY JUNCTIONS 1 TO 7 IMPROVEMENTS)
(SIDE ROADS) ORDER 2019



THIS MAP IS BASED ON ORDNANCE SURVEY MATERIAL WITH THE PERMISSION OF ORDNANCE SURVEY ON BEHALF OF THE CONTROLLER OF HER MAJESTY'S STATIONERY OFFICE. © CROWN COPYRIGHT. UNAUTHORISED REPRODUCTION INFRINGES CROWN COPYRIGHT AND MAY LEAD TO PROSECUTION OR CIVIL PROCEEDINGS. HIGHWAYS ENGLAND 100030649, 2019.

M621 JUNCTION 2A OTHER IMPROVEMENTS

Site Plan referred to in
THE HIGHWAYS ENGLAND
(M621 MOTORWAY JUNCTIONS 1 TO 7 IMPROVEMENTS)
(SIDE ROADS) ORDER 2019



THIS MAP IS BASED ON ORDNANCE SURVEY MATERIAL WITH THE PERMISSION OF ORDNANCE SURVEY ON BEHALF OF THE CONTROLLER OF HER MAJESTY'S STATIONERY OFFICE. © CROWN COPYRIGHT. UNAUTHORISED REPRODUCTION INFRINGES CROWN COPYRIGHT AND MAY LEAD TO PROSECUTION OR CIVIL PROCEEDINGS. HIGHWAYS ENGLAND 100030649, 2019.

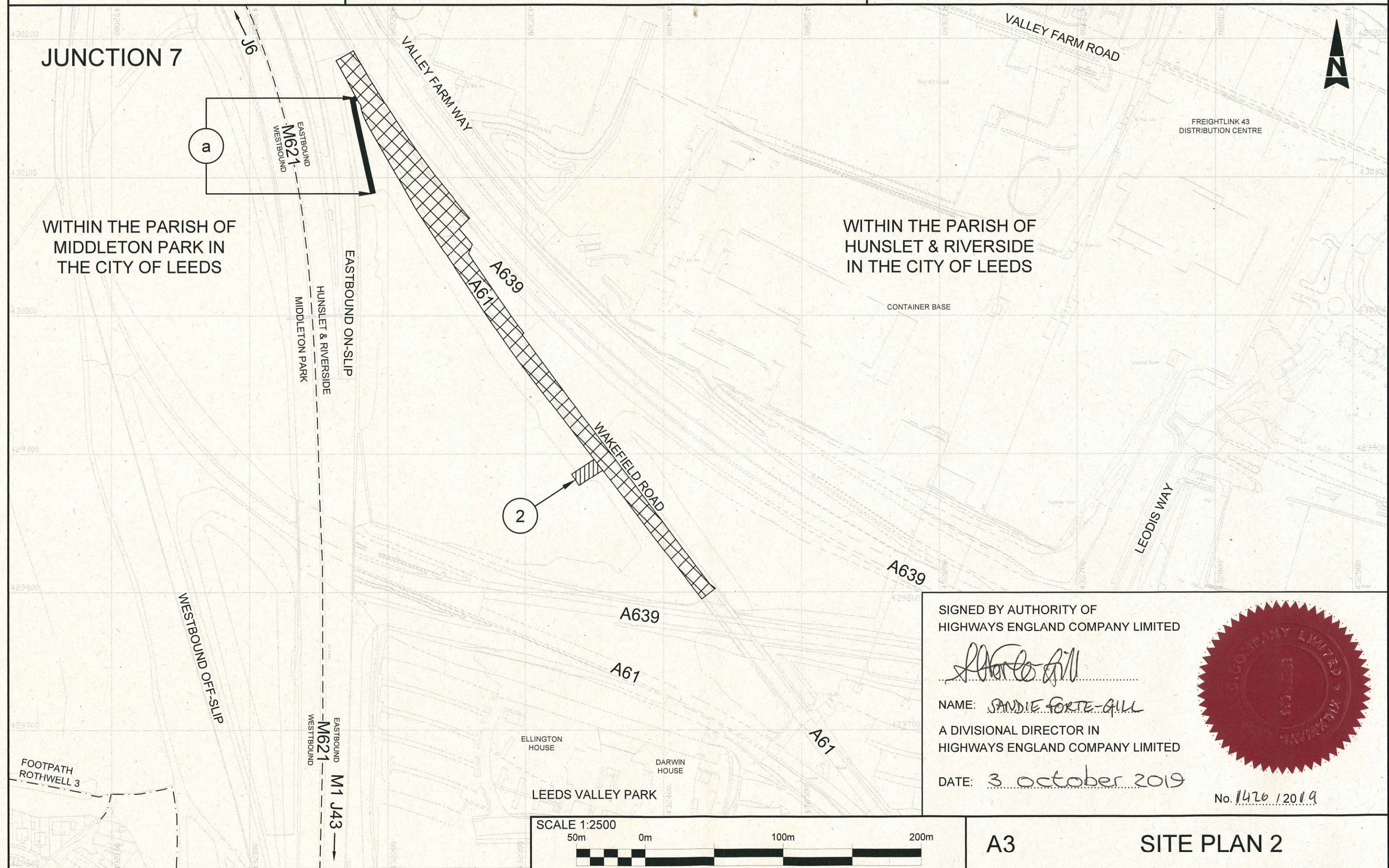
M621 JUNCTION 7 STOPPING UP AND OTHER IMPROVEMENTS

Site Plan referred to in
THE HIGHWAYS ENGLAND
(M621 MOTORWAY JUNCTIONS 1 TO 7 IMPROVEMENTS)
(SIDE ROADS) ORDER 2019

JUNCTION 7

WITHIN THE PARISH OF
MIDDLETON PARK IN
THE CITY OF LEEDS

WITHIN THE PARISH OF
HUNSLET & RIVERSIDE
IN THE CITY OF LEEDS



SIGNED BY AUTHORITY OF
HIGHWAYS ENGLAND COMPANY LIMITED

Sandie Forte-Gill

NAME: SANDIE FORTE-GILL
A DIVISIONAL DIRECTOR IN
HIGHWAYS ENGLAND COMPANY LIMITED

DATE: 3 october 2019



No. 1426/2019

SCALE 1:2500



A3

SITE PLAN 2

If you need help accessing this or any other Highways England information, please call **0300 123 5000** and we will help you.

© Crown copyright 2020.

You may re-use this information (not including logos) free of charge in any format or medium, under the terms of the Open Government Licence. To view this licence:

visit www.nationalarchives.gov.uk/doc/open-government-licence/

write to the **Information Policy Team, The National Archives, Kew, London TW9 4DU**, or email psi@nationalarchives.gsi.gov.uk.

Mapping (where present): © Crown copyright and database rights 2019 OS 100030649. You are permitted to use this data solely to enable you to respond to, or interact with, the organisation that provided you with the data. You are not permitted to copy, sub-licence, distribute or sell any of this data to third parties in any form.

This document is also available on our website at www.highwaysengland.co.uk

For an accessible version of this publication please call **0300 123 5000** and we will help you.

If you have any enquiries about this publication email info@highwaysengland.co.uk or call **0300 123 5000***. Please quote the Highways England publications code **PR147/20**.

Highways England creative job number MCR19_0179

*Calls to 03 numbers cost no more than a national rate call to an 01 or 02 number and must count towards any inclusive minutes in the same way as 01 and 02 calls.

These rules apply to calls from any type of line including mobile, BT, other fixed line or payphone. Calls may be recorded or monitored.

Printed on paper from well-managed forests and other controlled sources when issued directly by Highways England.

Registered office Bridge House, 1 Walnut Tree Close, Guildford GU1 4LZ

Highways England Company Limited registered in England and Wales number 09346363