

A585

Windy Harbour to Skippool

June 2023



Welcome to the latest edition of the A585 Windy Harbour to Skippool project newsletter, keeping you up to date with the latest progress and information on the scheme.

As many of you know, the bypass was due to be completed in summer 2023. Due to delays caused by challenging and complex ground conditions on Garstang Road East, we are now planning to open the bypass in winter 2023.

We appreciate that this news will be unwelcome and would like to apologise for any inconvenience the new opening date may cause everyone. We're working hard to complete our work on this essential improvement project, safely and as quickly as possible, so motorists can benefit from smoother and more reliable journeys.

Many of you have questions about the new bypass, we would like to take this opportunity to address your queries in this newsletter.

Your questions answered

Why could you not keep Skippool as a roundabout junction?

Modelling predicted that a roundabout would not be able to cope with the future demand of traffic. A traffic light system will be much more efficient and the permanent solution will complement the lights located at surrounding areas including Windy Harbour, the new Poulton junction, the new Skippool Bridge junction, Norcross roundabout, Shard junction and Singleton junction.

The temporary lights at Skippool created a backlog of traffic, what happened?

Unfortunately, on the day of installation, the set up experienced a radar failure, which created a major delay. In addition, the light sequencing took time to adjust to the flow of traffic and you experienced delays and disruption to your journey. We'd like to apologise sincerely to everyone for the inconvenience this has caused.

Skippool roundabout



Will the layout at Amounderness Way create a bottleneck of traffic when the road merges from two lanes into one?

Amounderness Way is different to the A585 between Little Singleton junction and Skippool junction. This has side roads and access to residential properties, which all contribute to delaying traffic.

The capacity on Amounderness Way is decided by the systems controlling the junctions at either end rather than the road itself. The improvements made at Norcross roundabout will complement the A585 bypass project when it's completed by removing these bottlenecks.

Why has the bypass opening date changed from summer 2023 to winter 2023?

Due to delays caused by challenging and complex ground conditions on Garstang Road East, we are now planning to open the bypass in winter 2023.

The challenging ground conditions have led to problems in protecting and diverting a major water main. These works could not be rushed due to the risk of bursting the main, potentially leaving residents

in Poulton and surrounding areas without water.

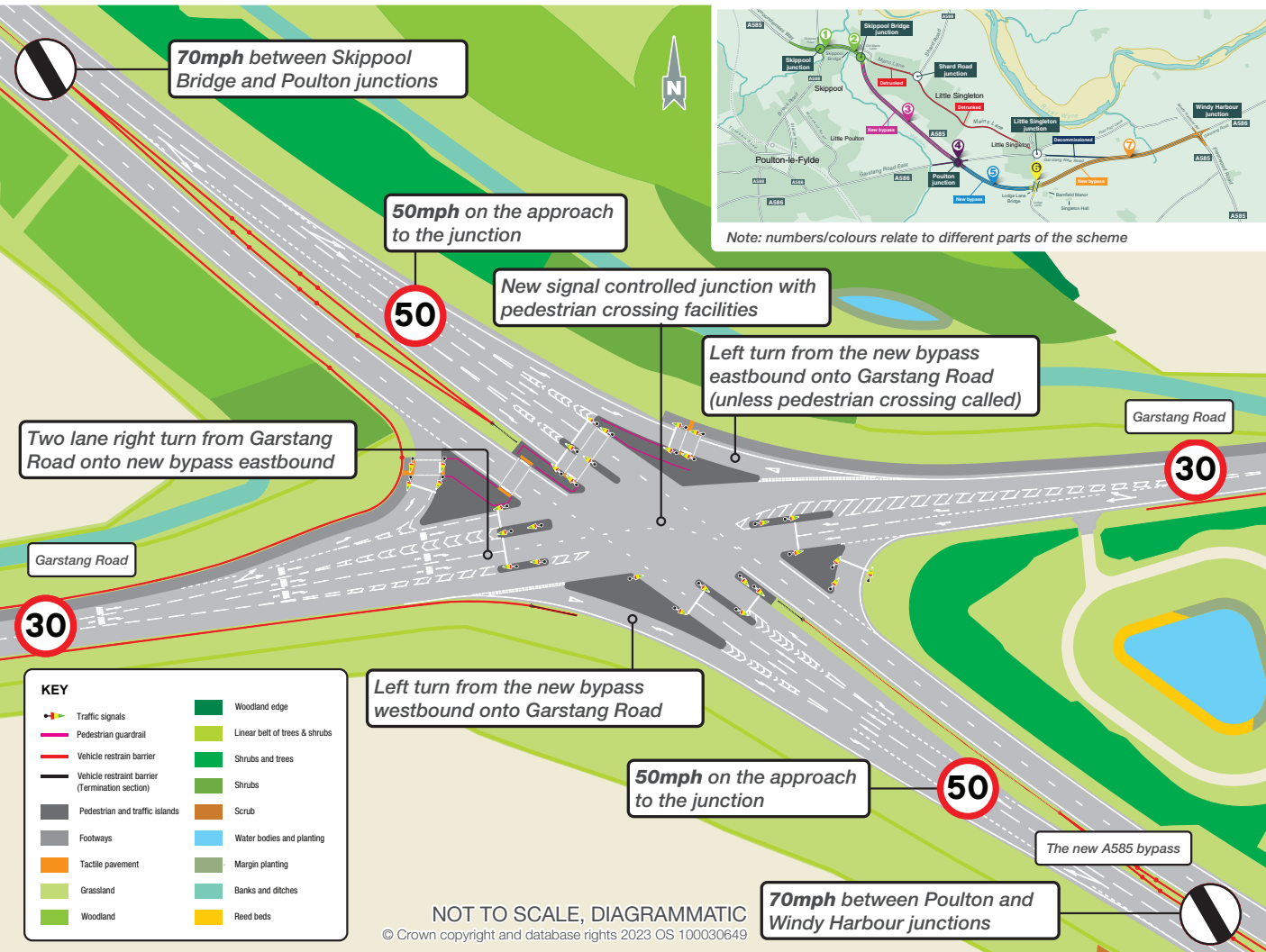
As a result, we had to design and adopt a unique engineering solution to divert the main. This unexpected work delayed the construction of the new Poulton junction at Garstang Road East, which is a critical section to the whole route.

Large tidal flat deposits including layers of clay, silt and sand in the ground, meant the original design had to be revised. To do this we ensured the water pipe was supported by a concrete block, piles and a reinforced base. Piles are used to build stable foundations for construction work to take place and consists of installing large amounts of wood, steel, or concrete deep into the ground. We also installed a system to reduce water levels to make the ground more stable.

This process took several weeks as the new design needed to go through a series of tests, making sure it solved the problem and met quality and safety requirements.

What will the new Poulton junction look like?

The new Poulton junction



The new Poulton junction will run across Garstang New Road and take the form of a signalised junction as indicated in the diagram below.

Why have you built a bridge over the new bypass next to Garstang New Road?

The new bridge is called Grange footbridge and will provide pedestrian and cycling access over the new bypass to the village of Singleton. There has always been a footpath at this location, the footbridge ensures the public right of way is not severed and kept open to the public. The bridge is also designed to ensure there is a safe crossing for wheelchair users.

What are you doing to ease congestion?

Over the summer period, we will be opening two extra lanes to increase capacity at Skippool, heading westbound and eastbound, that will form part of the permanent solution at the junction. This will improve the flow of traffic along Mains Lane.

Towards the end of June, we will be opening Lodge Lane and you will be able to drive across the new bridge deck.

Why couldn't you provide pedestrian access across Lodge Lane during the closure?

Due to the vast amount of work and excavations taking place within the closure, it would not have been safe to allow pedestrians to pass for the following reasons:

- The footway to north of the bridge being excavated for connection of new service diversions
- Temporary surfacing removed and excavated for the new highway alignment under the bridge structure
- Excavation of the southern footway for diversion works
- Heavy plant movements transporting excavated material around site
- Wagons entering and exiting site all day transporting aggregates

We understand this made it difficult for some people in Singleton and we sincerely apologise for this.

What will happen to Mains Lane once the bypass has been built?

We will be de-trunking Mains Lane. De-trunking means that Mains Lane will be handed back to Lancashire County Council from National Highways. The local authority will then take responsibility for this road.

When we de-trunk Mains Lane, we will be constructing new cycle paths and walkways to make it much safer for pedestrians, cyclists and horse riders.

Mains Lane



What will happen to Garstang New Road once the bypass has been built?

We will block off Garstang New Road at Singleton junction, so it is only accessible to local landowners. This is called de-commissioning and only allows access for equipment to be taken onto farmland by the landowner. Pool Foot Lane, Mains Lane, Lodge Lane and Garstang Road East will still be accessible.

Why are there so many cones at Skippool?

Because the work area at Skippool is continuously changing, we had to use cones to allow us to adapt to new working areas effectively.

The alternative would have been to use steel barriers, bolted into the ground. They're much more difficult to move than cones and in many cases lane closures would have been required to move the barriers, creating more congestion.

Why don't I see people working

Our operatives work at various locations throughout the project. Some of these locations are out of view and our site teams can't always be seen, for example at the new underpass on Lodge Lane or in the field between Garstang Road East and Mains Lane. We also have to take into account employee welfare and it would not be possible for operatives to work longer than the contracted 10.5 hours that they already work. Ideally, we would work more at night to complete work quicker, but we are restricted by the hours we can work due to the project being located in a built-up area.

What have we completed so far?

Since starting construction in 2020 we've completed a vast amount of work, with a strong focus on reducing our environmental impact. This includes:

- Moving and installing a network of complex utility services
- Constructing a new drainage system to prevent flooding when the bypass is operational
- Removing Skippool Bridge and constructing a new bridge structure over Main Dyke
- Building a new underpass at Lodge Lane
- Installing Grange footbridge, providing safe pedestrian access to the village of Singleton
- On-site recycling of approximately 500,000 tonnes

of site material, creating a net saving of 5,447 tonnes of carbon dioxide


- Mammal crossings to assist wildlife under the bypass
- Bird mitigation areas for special species like pink-footed geese, lapwing and curlew



Come and visit us



If you'd like to find out more about the A585 project or tell us your views, we'll be visiting Over Wyre in our engagement vehicle on the following dates:

Wednesday 21 June 2023	12pm - 6pm
Thursday 22 June 2023	9.30am - 3.30pm
<div><div>Location – Shovels Inn, Green Meadow Lane, Hambleton, FY6 9AL</div></div>	

Please come and meet us in person, where you'll have the opportunity to ask any questions you may have. We look forward to seeing you there.

For those of you unable to make the Over Wyre events, we'll be visiting various locations in Poulton in August. We will provide exact dates and locations when we have more information.



Image courtesy NorthWest Air Ambulance

Our work in the community

North-West Air Ambulance Service

We've been clearing out our wardrobes recently to donate items for air ambulance charities to sell in their shops.

Alongside staff across the north-west, we have been donating clothing, accessories, toys, books and other household goods for The North-West Air Ambulance Service. In total, 120 bags were collected and donated in the north-west, the money raised from the sale of the donations will help fund the charities' life-saving work.

A member of the National Highways Regional Customer Service Programme team said:

"We see the outstanding work the air ambulances do at close hand. Many of our staff and supply chain members have a real affinity with them, either from being on scene at incidents they are responding to, or through volunteering for their charities. For many colleagues just knowing they are there is a comfort."

"As independent charities that rely on the generosity of public donations, we're delighted to be able to raise funds to support their life-saving work in this way."

The organisations that contributed to the north-west donation were:

- Kier Highways
- National Highways
- AmeySRM
- Jacobs
- WJ Group
- Costain



Know the zones

Large vehicles, such as heavy goods vehicles (HGVs) have zones of limited visibility and are considerably longer, heavier, and more powerful than standard vehicles. They also need more stopping distance.

Other drivers often underestimate the size and position of these zones of limited visibility. Please be aware of the zones so you can stay safe.

There are three simple ways you can improve your safety when driving around HGVs and other large vehicles:



1. Stay visible
2. Overtake with care
3. Don't tailgate

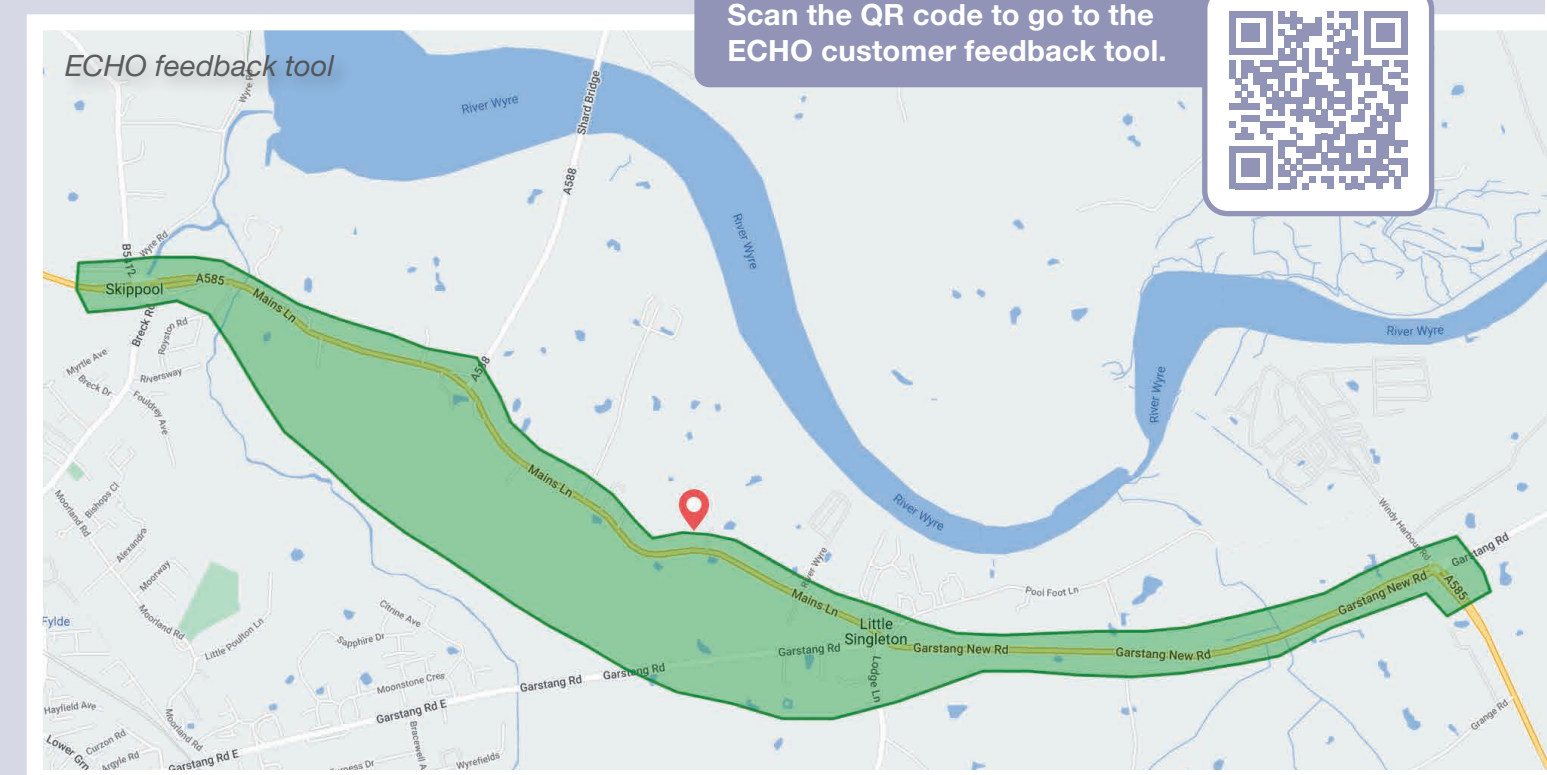
For more information please visit www.nationalhighways.co.uk/KnowTheZones

Scan the QR code to take you directly to our the website.



Have your say - ECHO feedback tool

Do you want to share your thoughts and feedback with the team? Visit our A585 Windy Harbour to Skippool feedback tool to have your say. The feedback tool includes an interactive map, where you can click on a specific location to make a comment or provide us with your general feedback. Scan the QR with your smartphone to have your say.



If you need help accessing this or any other National Highways information, please call **0300 123 5000** and we will help you.

How to find out more

To sign up for updates or to find out more information on the project, please visit our dedicated scheme webpage: nationalhighways.co.uk/our-roads/north-west/a585-windy-harbour-to-skipool

Alternatively, you can follow us on

Facebook: [National Highways: North-West](#) or on

Twitter: [@HighwaysNWEST](#)

If you have any questions regarding the project, please email our dedicated project inbox at: A585windyharbourtoskipool@nationalhighways.co.uk or call us on 0300 123 5000 (24-hour Customer Contact Centre).

Scan the QR code to take you directly to our project website



© Crown copyright 2023.

You may re-use this information (not including logos) free of charge in any format or medium, under the terms of the Open Government Licence. To view this licence: visit www.nationalarchives.gov.uk/doc/open-government-licence/ write to the **Information Policy Team, The National Archives, Kew, London TW9 4DU**, or email psi@nationalarchives.gsi.gov.uk.

Mapping (where present): © Crown copyright and database rights 2023 OS 100030649. You are permitted to use this data solely to enable you to respond to, or interact with, the organisation that provided you with the data. You are not permitted to copy, sub-licence, distribute or sell any of this data to third parties in any form.

This document is also available on our website at

www.nationalhighways.co.uk

For an accessible version of this publication please call **0300 123 5000** and we will help you.

If you have any enquiries about this publication email info@nationalhighways.co.uk or call **0300 123 5000***. Please quote the National Highways publications code **PR53/23**.

National Highways creative job number CRE23_0267

*Calls to 03 numbers cost no more than a national rate call to an 01 or 02 number and must count towards any inclusive minutes in the same way as 01 and 02 calls. These rules apply to calls from any type of line including mobile, BT, other fixed line or payphone. Calls may be recorded or monitored.

Printed on paper from well-managed forests and other controlled sources when issued directly by National Highways.

Registered office Bridge House, 1 Walnut Tree Close, Guildford GU1 4LZ

National Highways Limited registered in England and Wales number 09346363