

A30 Chiverton to Carland Cross scheme

A30 new alignment

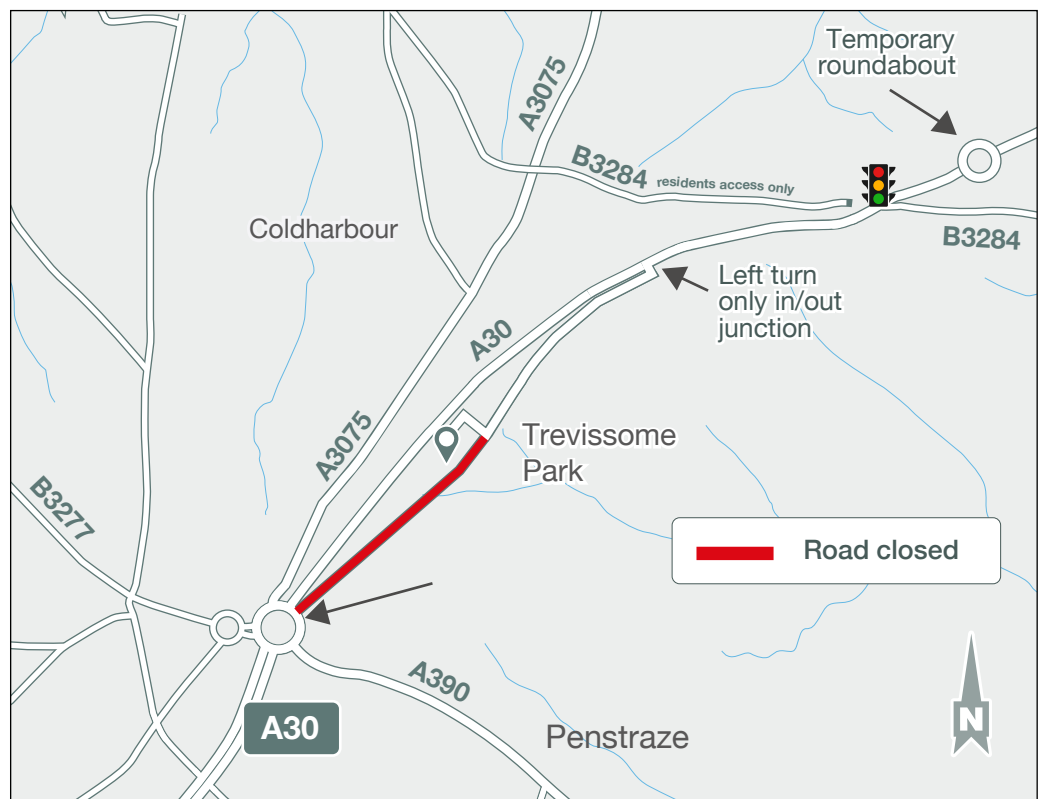
New entry and exit for Trevisson Park - from 13 March 2023



Construction of the new section of road between Chybucca and Marazanvose



Installation of Tolgroggan bridge during February 2023



We will be closing the A30 overnight from Chiverton to Carland Cross for four nights between 6 and 10 March to carry out earthworks at Tolgroggan that will allow us to build the new road realignment for the A30, BT utility works and surfacing works at Chiverton Roundabout. These closures will then be followed by a weekend road closure from Chiverton to Boxheater between 10 and 13 March.

During the weekend road closure we will be removing Chybucca roundabout and replacing it with a new traffic light controlled junction. This junction will allow us to safely build this section of road before linking it up to the section opened late last year between Chybucca and Chiverton. A new interim roundabout will be in use for traffic to access Trevisson Park. Further information and directions can be seen on the following pages.

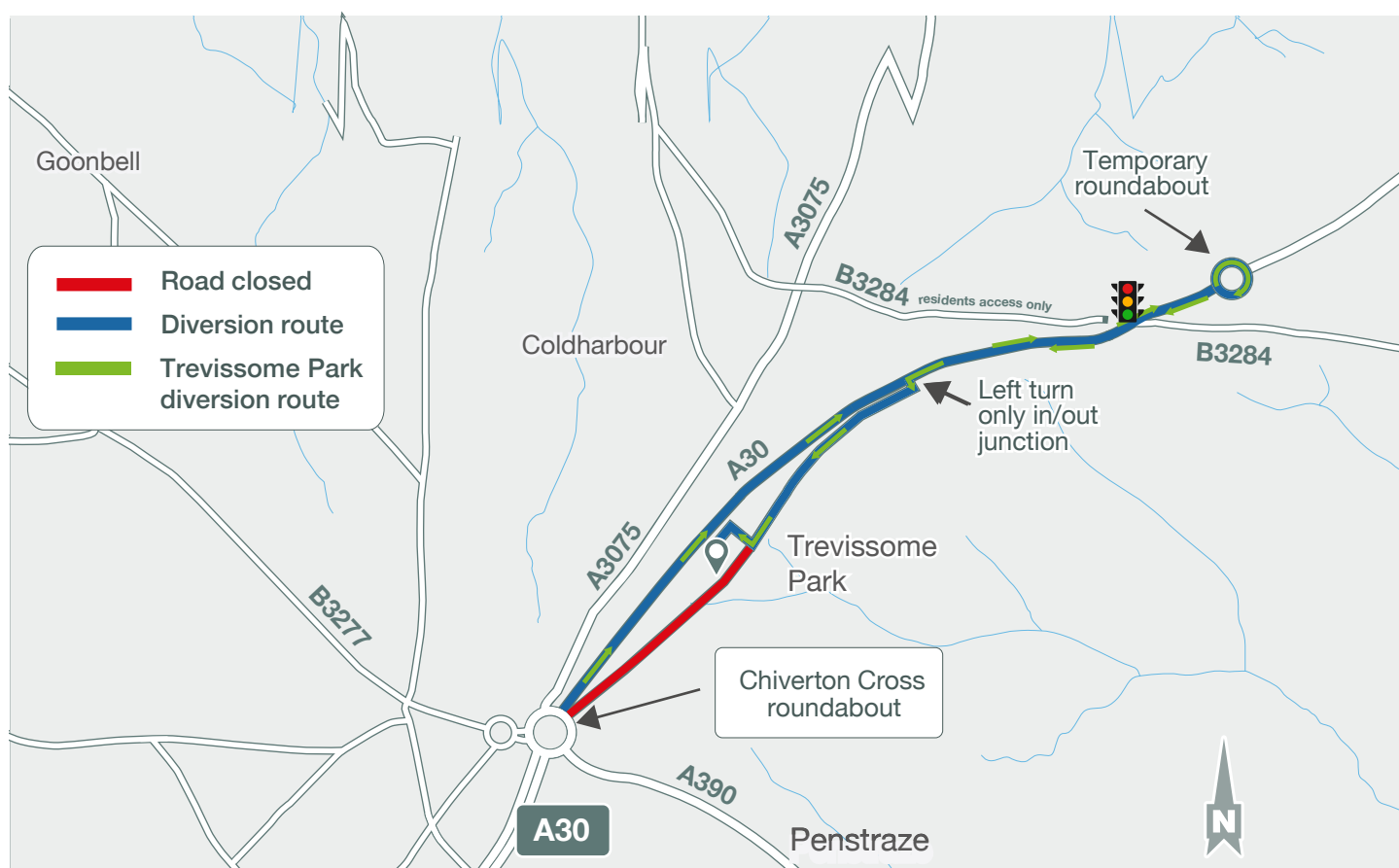
Visit our website: <https://nationalhighways.co.uk/a30chiverton>

Join our mailing list for email updates: www.a30c2cc.info/emailsSignup

A30 Chiverton to Carland Cross scheme

A30 new alignment

How to enter Trevissonne Park - from the west



© Crown copyright and database rights 2022 OS 100030649. Diagrammatic and not to scale

To allow us to continue with the construction of the new section of road between Chybucca and Marazanvose, there will be changes to the way you can enter Trevissonne Park from the west.

You will not be able to turn right across the carriageway to access Trevissonne Park from the west (Chiverton Cross roundabout).

To get to Trevissonne Park, travel on the A30 eastbound until you reach the new traffic light

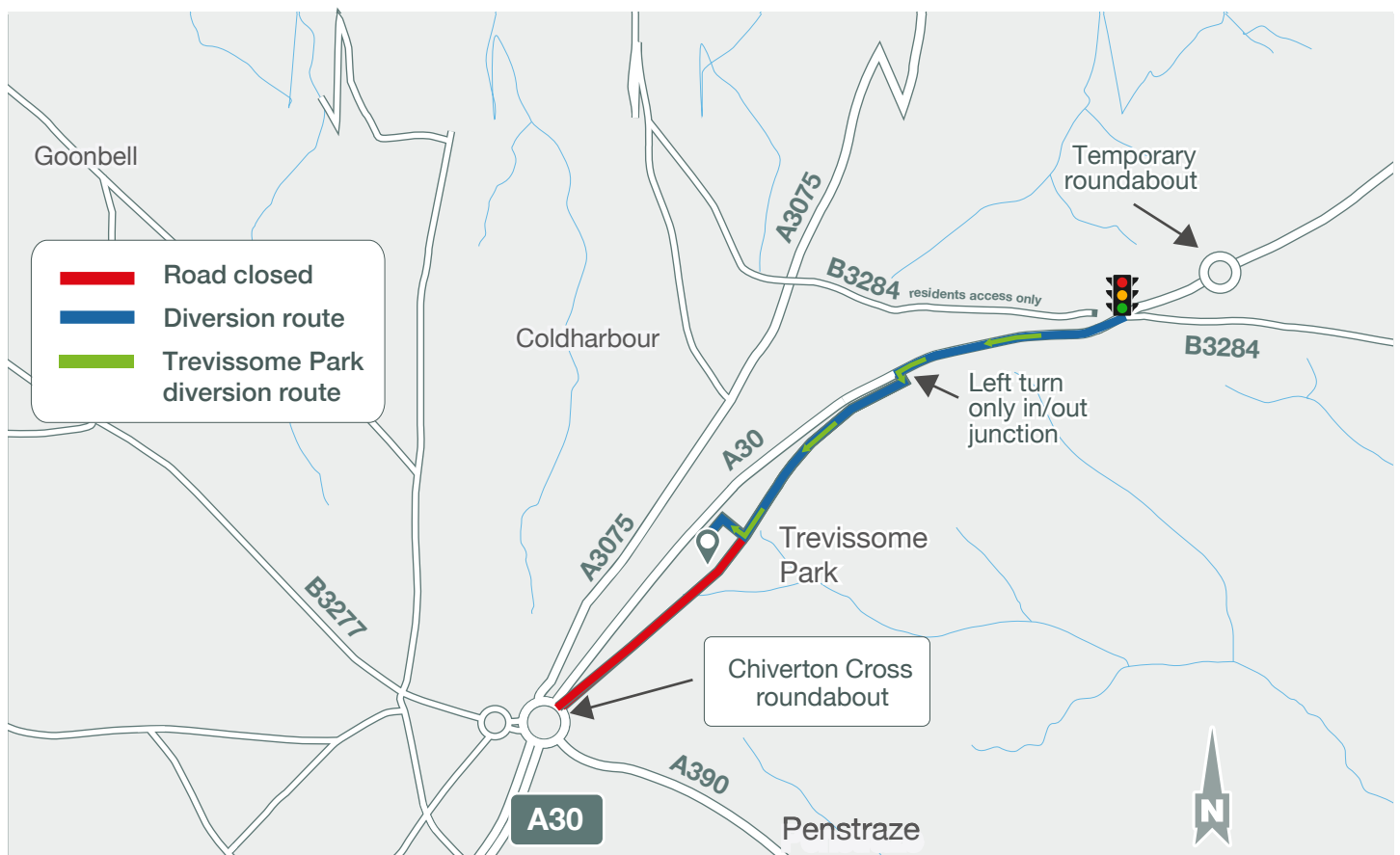
controlled junction at Chybucca, continue ahead until you reach the new interim roundabout. Go fully round the roundabout and travel back on the A30 westbound. After half a mile use the new left turn junction, signposted Trevissonne Park. Travel along this road for 1 mile until you reach Trevissonne Park on your right hand side as shown on the map above.

This will increase your journey so please allow yourself adequate time and take care when using this new route.

A30 Chiverton to Carland Cross scheme

A30 new alignment

How to enter Trevisson Park - from the east



© Crown copyright and database rights 2022 OS 100030649. Diagrammatic and not to scale

To allow us to continue with the construction of the new section of road between Chybucca and Marazanvose, there will be changes to the way you can enter Trevisson Park from the east.

When you reach the new interim roundabout. Go across the roundabout and travel westbound to the

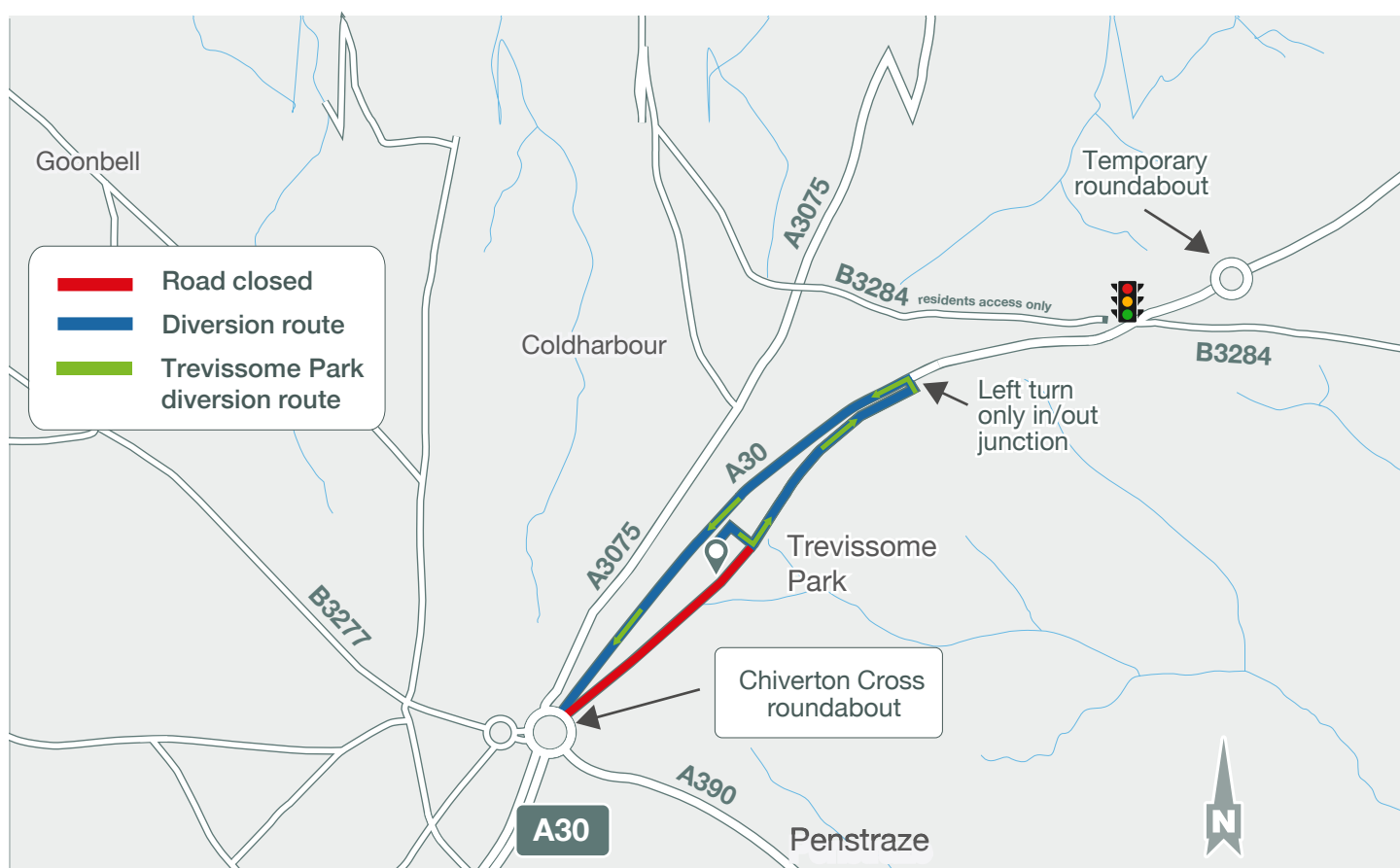
new traffic light controlled junction and continue on the road. After half a mile use the new left turn junction, signposted Trevisson Park. Travel along this road for 1 mile until you reach Trevisson Park on your right hand side as shown on the map above.

Please take care when using this new route.

A30 Chiverton to Carland Cross scheme

A30 new alignment

How to exit Trevisson Park



© Crown copyright and database rights 2022 OS 100030649. Diagrammatic and not to scale

To allow us to continue with the construction of the new section of road between Chybuca and Marazanvose, there will be changes to the way you can exit Trevisson Park.

You will only be able to exit Trevisson Park by following the old A30 to join the new A30 at the purpose built junction. At this point, you will need to turn left out of this junction to the Chiverton Cross roundabout as shown on the map above.

Your journey will increase if you are going east towards Chybuca, so please allow yourself adequate time and take care when using this new route.