

Welcome to the November and December edition of the A14 junction 47a to junction 49 concrete road newsletter.

What we've done so far

Now that the A14 eastbound carriageway has been fully reconstructed, we've started our reconstruction of the A14 westbound, beginning with the rebuilding of lane 2.

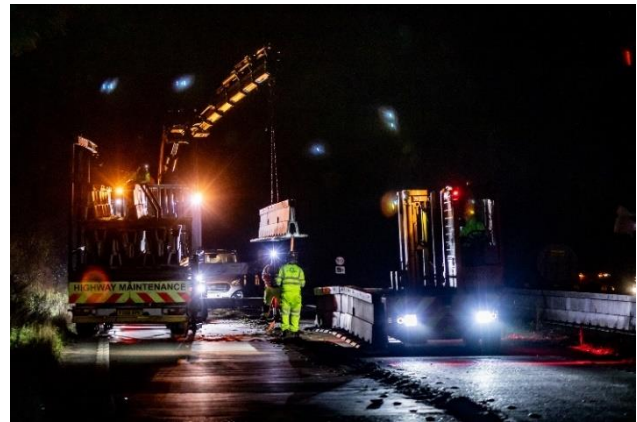
After we completed the eastbound carriageway's temporary surface, it was noticed that there were some issues with the surfacing that had been laid.

Our findings show that the stone separated from the surfacing material, which can sometimes happen between transportation and laying the surface material, and it led to the surface cracking.

Once the westbound carriageway reconstruction is completed, we'll return in summer 2024 to apply the eastbound finished surface layer.



Since the last edition, we've also completed site establishment so that the staff have welfare facilities and carried out a number of trial holes, to ensure we know where all of the services located underneath the carriageway are, so that we can work around them.



We've also begun excavating lane 2 of the westbound carriageway, in preparation for the full reconstruction of the road.

The carriageway is still reduced to one lane in both directions as we work, and the speed limit remains at 50mph to ensure the safety of our workers and other road users.

What's next

Over the next month, we're expecting to complete most of the removal of the existing carriageway of lane 2 of the westbound carriageway.

We'll also be removing the barrier located in the verge of the westbound carriageway, which will be replaced at a later date. The public right of way that crosses the central reserve will also begin to be reconstructed.

Over the Christmas period, our site will shutdown from Wednesday 20 December. We'll be back on Wednesday 3 January. We will still have staff around to provide recovery to stranded vehicles, to check the traffic management, and to carry out any emergency maintenance work.

Traffic layout changes

Following the traffic management switch, we expected congestion to be heavier than usual whilst road users got used to the new layout, and this has proved to be the case.

We know it's a lot to ask, but to help ease congestion we'd like to encourage drivers to think about the way they travel during peak periods such as:

- 🚗 Car sharing
- 🏠 Working from home if possible
- 🕒 Re-timing your journey

Drivers shouldn't park their vehicles alongside each other or straddle both lanes to prevent other drivers from using the next-door lane on the approach to the roadworks.

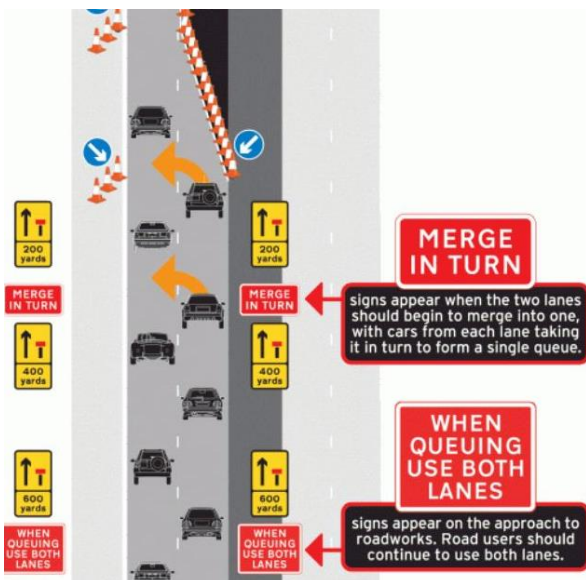
We have deployed our camera van and found that some HGVs are straddling both lanes or stopping side by side and then moving slowly along, which creates large gaps and adds to the congestion in the area.



As seen above, we are seeing this type of manoeuvre happening on a frequent basis, which is adding to congestion in the area.

We are reviewing the CCTV footage of these incidents and writing to the haulage companies who own the vehicles to ask their drivers not to do these manoeuvres.

The diagram below shows how drivers should correctly 'merge in turn'.



This can help reduce the overall length of the queue significantly, and the risk of disruption and tailbacks at junctions.

We apologise for the congestion caused, and thank you for your patience while we complete our essential work.

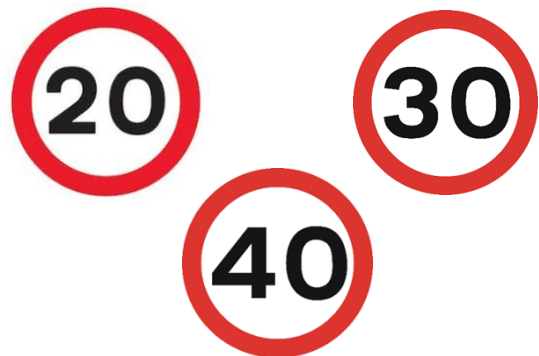
Traffic control

We've worked with Suffolk County Council to consider further actions that can be introduced to prevent the rat running through local villages.

Although we've installed additional signs along various routes, it's clear that some road users are not paying attention to these. We've temporarily reduced the speed limit on a number of local roads already, and these have been in place since 16 October 2023.

The temporary speed reductions are subject to temporary traffic regulation orders (TTRO's). These temporary speed limits will be enforceable once the new speed limit signs have been installed.

We're in the process of applying for a further TTRO to cover Church Road, New Road, Leys Road and Hollow Lane in Tostock. The temporary speed reductions are currently going through an approval process before they're implemented, which should be in the new year.



Please note these temporary speed limit reductions will be removed once the A14 junction 47a to junction 49 reconstruction project is completed in summer 2024.

The two safety speed camera vans will continue to monitor local routes people typically use as rat runs.

If a pothole is forming or the verge has become eroded, please report it directly to Suffolk County Council on 0345 606 6171 or using their online [Highways reporting tool](#).

If you have any other queries relating to the A14, please contact us by calling the 24/7 National Highways Customer Contact Centre on 0300 123 5000, email info@nationalhighways.co.uk.

Woolpit Tennis and Cricket Club car park repairs

We donated over 8 tonnes of material to help repair and level the car park shared by the Woolpit Tennis Club and Woolpit Cricket Club.



Four members of staff helped deliver the material and carry out the repairs, which meant the car park is now free of potholes and is nice and level.



Tostock Animal Park

Tostock Animal Park reached out to us to request help to provide some materials so that they could create some new paths and stabilise some of their existing tracks.



Four members of our staff volunteered to help drop off and level 50 tonnes of donated recycled road material. We also provided the plant and machinery to help put this in place and level.

If you're a member of a local community group needing support for the work you do in the local community, please contact Jon via email at A14J47J49CCC@sisk.co.uk.

A14 welcomes Jo Churchill MP

We recently welcomed the local MP for Bury St Edmunds to our site. Jo Churchill was given a tour of the site, an update on what work has taken place, and what work we have coming up.



Jo Churchill MP said, "I was delighted to visit the A14 roadworks by Woolpit. I received an update and a comprehensive look at what's going on and the switchover and chat to Sisk and National Highways about the project.

I was particularly pleased to learn about the company's keenness to offer work experience for those interested in the civil construction world."

"Good progress has been made and I look forward with many constituents to seeing its completion and a smooth new road in early summer 2024."



Width restrictions

During the contraflow, vehicles with an overall width exceeding 3.5m will be unable to travel through the roadworks.

Any loads wider than 3m must give advance notification to Suffolk County Council and receive consent. See www.suffolk.gov.uk/roads-and-transport/lorry-management/apply-to-move-abnormal-loads

Are you ready for winter driving conditions?

With changing seasons come differing weather conditions and temperatures. Are you ready?

Topping up anti-freeze in your car and checking your tyres are inflated to the correct air pressure are just two important things you can do to prepare for driving this autumn/winter.

There are lots of travel tips and advice for negotiating [severe weather](#) on the National Highways' website to help improve driver confidence when travelling as temperatures get colder, the nights draw in, low-lying sun hampers vision and the potential for fog, rain and high winds increase.

Short Messaging Service (SMS)

We've set up a free SMS alerts service to warn road users, via text message, of any incidents that occur within our roadworks on the A14.

You can sign up for this service by sending your mobile number to:

ConcreteRoadsEastA14@nationalhighways.co.uk

Please reference the 'A14 junction 47a Haughley to junction 49 Tothill SMS service' in the subject of your email.

You can opt out at any time by contacting us at the same email address.

Tell us what you think

We'd like to hear what you think about the information we send to you. Please spend a few minutes completing our online questionnaire by visiting:

<https://forms.office.com/e/TC4RYq9bJk>

Alternatively, you can also which you can access by scanning this QR code:



Get in contact with us

You can visit our webpage and sign up for updates about the scheme at www.nationalhighways.co.uk/A14Haughley

If you'd like more information about this work, then please call the 24/7 National Highways Customer Contact Centre on 0300 123 5000, or email info@nationalhighways.co.uk